

---

**WPX ENERGY ROCKY MOUNTAIN LLC-EBUS**

---

**PA 413-29  
PARACHUTE  
Garfield County , Colorado**

**Cement Surface Casing**  
**08-Apr-2012**

**Post Job Report**

## The Road to Excellence Starts with Safety

Sold To #: 300721	Ship To #: 2918359	Quote #:	Sales Order #: 9396771
Customer: WPX ENERGY ROCKY MOUNTAIN LLC-EBUS		Customer Rep: WILSON, W.C	
Well Name: PA		Well #: 413-29	API/UWI #: 05-045-19505
Field: PARACHUTE	City (SAP): PARACHUTE	County/Parish: Garfield	State: Colorado
Lat: N 39.49 deg. OR N 39 deg. 29 min. 23.77 secs.		Long: W 108.023 deg. OR W -109 deg. 58 min. 36.39 secs.	
Contractor: NABORS 577		Rig/Platform Name/Num: NABORS 577	
Job Purpose: Cement Surface Casing			
Well Type: Development Well		Job Type: Cement Surface Casing	
Sales Person: MAYO, MARK		Srvc Supervisor: NICKLE, RYON	MBU ID Emp #: 454759

## Job Personnel

HES Emp Name	Exp Hrs	Emp #	HES Emp Name	Exp Hrs	Emp #	HES Emp Name	Exp Hrs	Emp #
BORSZICH, STEPHEN A	9	412388	JENSEN, SHANE Lynn	9	441759	KEANE, JOHN Donovan	9	486519
NICKLE, RYON	9	454759						

## Equipment

HES Unit #	Distance-1 way	HES Unit #	Distance-1 way	HES Unit #	Distance-1 way	HES Unit #	Distance-1 way
	60 mile	10001431	60 mile	10744549	60 mile	10897797	60 mile
10897797	60 mile	10951249	60 mile	11071463	60 mile		

## Job Hours

Date	On Location Hours	Operating Hours	Date	On Location Hours	Operating Hours	Date	On Location Hours	Operating Hours
4/8/12	9	2						

TOTAL Total is the sum of each column separately

## Job

Formation Name	Formation Depth (MD)	Top	Bottom	2475	Called Out	Date	Time	Time Zone
Form Type			BHST		On Location	08 - Apr - 2012	12:00	MST
Job depth MD	2457.7 ft		Job Depth TVD	2457.7 ft	Job Started	08 - Apr - 2012	18:14	MST
Water Depth			Wk Ht Above Floor	3. ft	Job Completed	08 - Apr - 2012	19:46	MST
Perforation Depth (MD)	From		To		Departed Loc	08 - Apr - 2012	21:00	MST

## Well Data

Description	New / Used	Max pressure psig	Size in	ID in	Weight lbm/ft	Thread	Grade	Top MD ft	Bottom MD ft	Top TVD ft	Bottom TVD ft
-------------	------------	-------------------	---------	-------	---------------	--------	-------	-----------	--------------	------------	---------------

Sales/Rental/3<sup>rd</sup> Party (HES)

Description	Qty	Qty uom	Depth	Supplier
PLUG,CMTG,TOP,9 5/8,HWE,8.16 MIN/9.06 MA	1	EA		

## Tools and Accessories

Type	Size	Qty	Make	Depth	Type	Size	Qty	Make	Depth	Type	Size	Qty	Make
Guide Shoe					Packer					Top Plug	9.625	1	HES
Float Shoe					Bridge Plug					Bottom Plug			
Float Collar					Retainer					SSR plug set			
Insert Float										Plug Container	9.625	1	HES
Stage Tool										Centralizers			

## Miscellaneous Materials

Gelling Agt	Conc	Surfactant	Conc	Acid Type	Qty	Conc	%
Treatment Fld	Conc	Inhibitor	Conc	Sand Type	Size	Qty	

## Fluid Data

Fluid Data									
Stage/Plug #: 1									
Fluid #	Stage Type	Fluid Name	Qty	Qty uom	Mixing Density lbm/gal	Yield ft3/sk	Mix Fluid Gal/sk	Rate bbl/min	Total Mix Fluid Gal/sk

Stage/Plug #: 1											
Fluid #	Stage Type	Fluid Name	Qty	Qty uom	Mixing Density lbm/gal	Yield ft <sup>3</sup> /sk	Mix Fluid Gal/sk	Rate bbl/min	Total Mix Fluid Gal/sk		
1	Fresh Water		20.00	bbl	8.33	.0	.0	4			
2	VersaCem Lead	VERSACEM (TM) SYSTEM (452010)	440.0	sacks	12.3	2.38	13.75	8	13.75		
		13.75 Gal	FRESH WATER								
3	VersaCem Tail	VERSACEM (TM) SYSTEM (452010)	160.0	sacks	12.8	2.11	11.75	8	11.75		
		11.75 Gal	FRESH WATER								
4	Displacement Fluid		189.00	bbl	8.34	.0	.0	10			
Calculated Values		Pressures		Volumes							
Displacement	189.9	Shut In: Instant		Lost Returns		Cement Slurry	146.6	Pad			
Top Of Cement		5 Min		Cement Returns	38	Actual Displacement	189.9	Treatment			
Frac Gradient		15 Min		Spacers	20	Load and Breakdown		Total Job	356.5		
Rates											
Circulating	RIG	Mixing	8	Displacement	10	Avg. Job	9				
Cement Left In Pipe	Amount	44.25 ft	Reason	Shoe Joint							
Frac Ring # 1 @	ID	Frac ring # 2 @	ID	Frac Ring # 3 @	ID	Frac Ring # 4 @	ID				
The Information Stated Herein Is Correct				Customer Representative Signature							

*The Road to Excellence Starts with Safety*

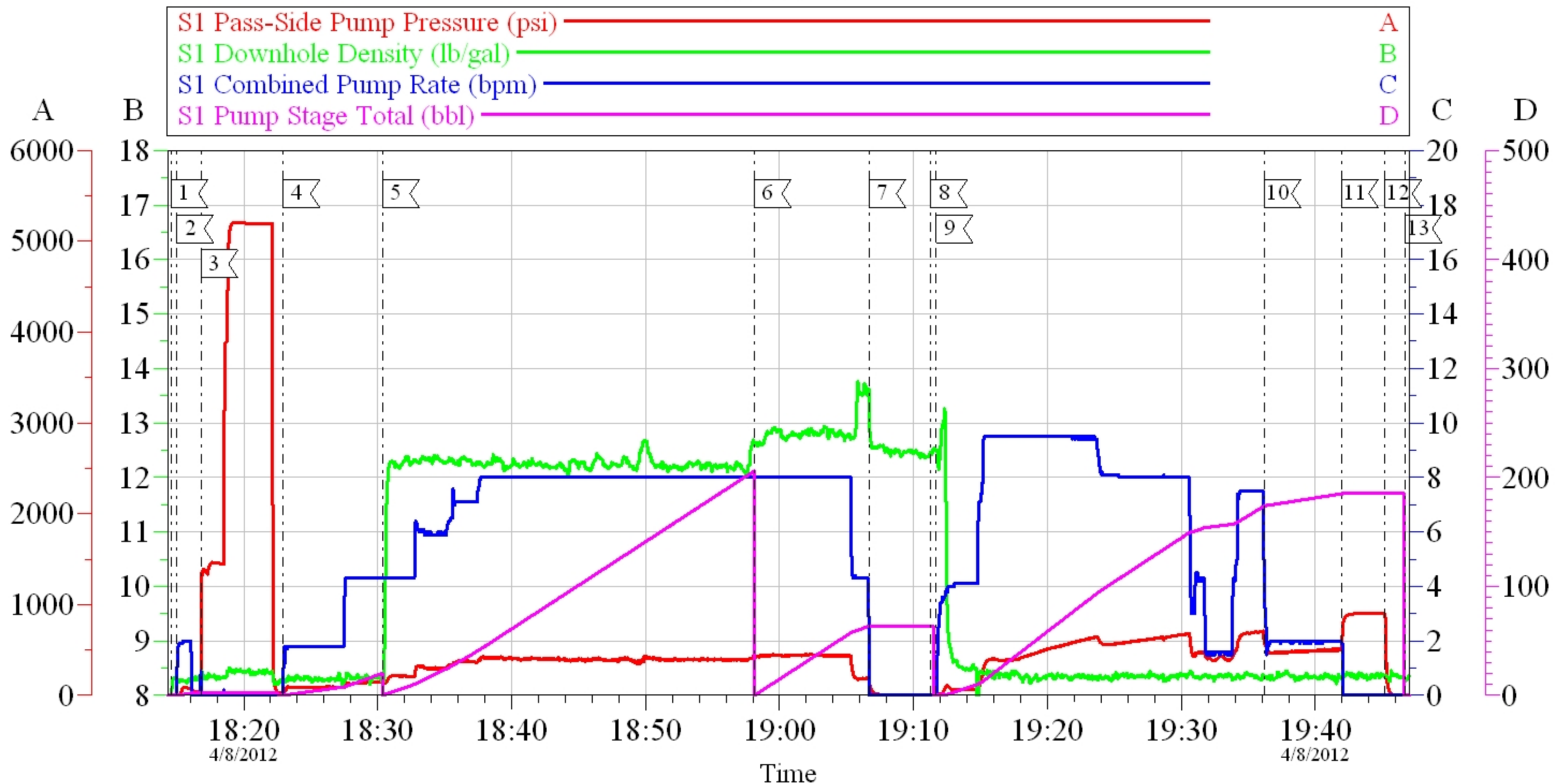
<b>Sold To #:</b> 300721		<b>Ship To #:</b> 2918359		<b>Quote #:</b>		<b>Sales Order #:</b> 9396771	
<b>Customer:</b> WPX ENERGY ROCKY MOUNTAIN LLC-EBUS				<b>Customer Rep:</b> WILSON, W.C			
<b>Well Name:</b> PA			<b>Well #:</b> 413-29			<b>API/UWI #:</b> 05-045-19505	
<b>Field:</b> PARACHUTE		<b>City (SAP):</b> PARACHUTE		<b>County/Parish:</b> Garfield		<b>State:</b> Colorado	
<b>Legal Description:</b>							
<b>Lat:</b> N 39.49 deg. OR N 39 deg. 29 min. 23.77 secs.				<b>Long:</b> W 108.023 deg. OR W -109 deg. 58 min. 36.39 secs.			
<b>Contractor:</b> NABORS 577			<b>Rig/Platform Name/Num:</b> NABORS 577				
<b>Job Purpose:</b> Cement Surface Casing						<b>Ticket Amount:</b>	
<b>Well Type:</b> Development Well			<b>Job Type:</b> Cement Surface Casing				
<b>Sales Person:</b> MAYO, MARK			<b>Srvc Supervisor:</b> NICKLE, RYON			<b>MBU ID Emp #:</b> 454759	

Activity Description	Date/Time	Cht #	Rate bbl/min	Volume bbl		Pressure psig		Comments
				Stage	Total	Tubing	Casing	
Call Out	04/08/2012 08:30							HES CEMENT CREW
Pre-Convoy Safety Meeting	04/08/2012 10:20							ALL HES CEMENT CREW
Crew Leave Yard	04/08/2012 10:30							
Arrive At Loc	04/08/2012 12:00							RIG PULLING DRILL PIPE
Assessment Of Location Safety Meeting	04/08/2012 12:05							ALL HES CEMENT CREW
Other	04/08/2012 12:30							SPOT EQUIPMENT; 1 CEMENTERS F 450, 1 ELITE PUMPING UNIT, 1 660 BULK TRANSPORT ** LEAD CEMENT BLOWN INTO SILO, SECOND BULK TRUCK PARKED ON LOWER PAD TO KEEP LOCATION CLEAR
Pre-Rig Up Safety Meeting	04/08/2012 12:45							ALL HES CEMENT CREW
Pre-Job Safety Meeting	04/08/2012 17:50							ALL HES CEMENT CREW, RIG CREW, COMPANY REP, AVAILABLE 3RD PARTY EE'S
Start Job	04/08/2012 18:14							TD- 2475' TP- 2457.67' SHOE- 44.25' OH- 13.5" SURFACE CASING- 9.625" 32.3#/FT H-40 MUD- 9.9 PPG YP- 18 PV- 18
Other	04/08/2012 18:15		2	2			91.0	FILL LINES, FRESH WATER

Activity Description	Date/Time	Cht #	Rate bbl/min	Volume bbl		Pressure psig		Comments
				Stage	Total	Tubing	Casing	
Pressure Test	04/08/2012 18:16							STALL OUT @ 1430 PSI, HELD FOR 30 SEC. PRESSURE UP TO 5210 PSI HELD FOR 3 MIN, PRESSURE DROP TO 5193 PSI
Pump Spacer 1	04/08/2012 18:22		4	20			150.0	FRESH WATER
Pump Lead Cement	04/08/2012 18:30		8	186.5			432.0	440 SKS; 12.3 PPG, 2.38 FT3/SK, 13.75 GAL/SK
Pump Tail Cement	04/08/2012 18:58		8	60.1			442.0	160 SKS; 12.8 PPG, 2.11 FT3/SK, 11.75 GAL/SK
Shutdown	04/08/2012 19:06							WASH UP ON TOP OF PLUG PER CO REP
Drop Top Plug	04/08/2012 19:11							CO REP VERIFIED PLUG LAUNCHED
Pump Displacement	04/08/2012 19:11		10	179.9			665.0	FRESH WATER, SLOWED RATE MULTIPLE TIMES TO ACCOUNT FOR SLOW PUMP IN CELLAR, 200# SUGAR USED
Slow Rate	04/08/2012 19:36		2	10			501.0	
Bump Plug	04/08/2012 19:41						962.0	
Check Floats	04/08/2012 19:45							FLOATS HELD, RETURNED 1 BBLS H2O
End Job	04/08/2012 19:46							PIPE WAS MOVED, GOOD RETURNS THROUGHOUT, 38 BBLS CEMENT TO SURFACE
Post-Job Safety Meeting (Pre Rig-Down)	04/08/2012 19:55							ALL HES CEMENT CREW
Pre-Convoy Safety Meeting	04/08/2012 20:45							ALL HES CEMENT CREW
Crew Leave Location	04/08/2012 21:00							THANK YOU FOR USING HALLIBURTON CEMENTING, RYON NICKLE AND CREW

# WPX - PA 413-29

SURFACE



## Local Event Log

1 START JOB	18:14:34	2 FILL LINES	18:15:00	3 PRESSURE TEST	18:16:48
4 PUMP H2O SPACER	18:22:55	5 PUMP LEAD CEMENT	18:30:21	6 PUMP TAIL CEMENT	18:58:07
7 SHUTDOWN	19:06:40	8 DROP TOP PLUG	19:11:16	9 PUMP DISPLACEMENT	19:11:41
10 SLOW RATE	19:36:09	11 BUMP PLUG	19:41:56	12 CHECK FLOATS	19:45:10
13 END JOB	19:46:40				

Customer: WPX ENERGY ROCKY MOUNTAIN LLC-EBUS  
 Well Description: PA 413-29  
 Company Rep: W.C. WILSON

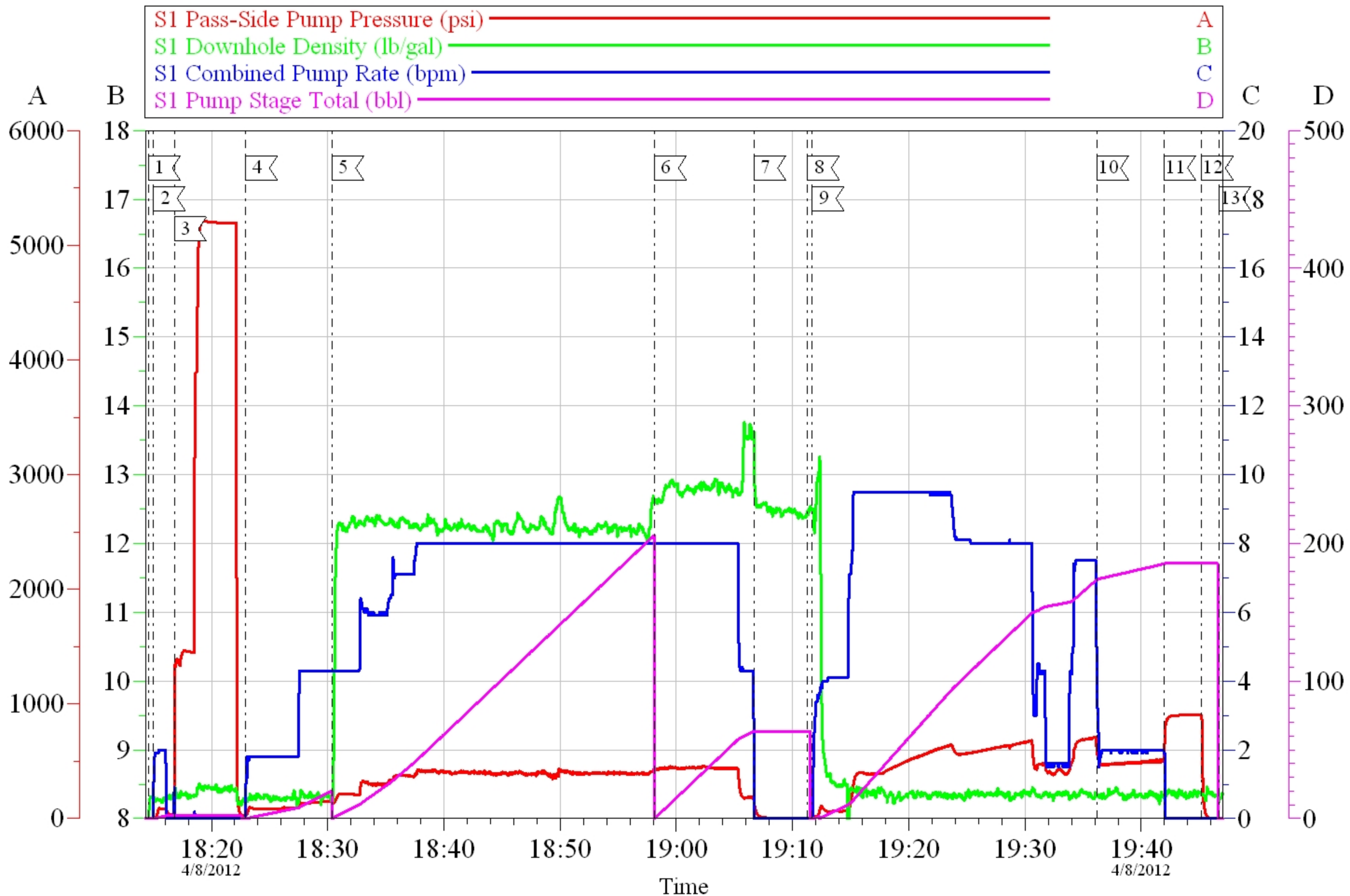
Job Date: 08-Apr-2012  
 Job Type: SURFACE  
 Cement Supervisor: RYON NICKLE

Sales Order #: 9396771  
 ADC Used: YES  
 Elite # / Operator: E9 / STEVE BORSZICH

OptiCem v6.4.10  
 08-Apr-12 19:47

# WPX - PA 413-29

SURFACE



Customer: WPX ENERGY ROCKY MOUNTAIN LLC-EBUS  
 Well Description: PA 413-29  
 Company Rep: W.C. WILSON

Job Date: 08-Apr-2012  
 Job Type: SURFACE  
 Cement Supervisor: RYON NICKLE

Sales Order #: 9396771  
 ADC Used: YES  
 Elite # / Operator: E9 / STEVE BORSZICH

OptiCem v6.4.10  
 08-Apr-12 19:48

# HALLIBURTON

## Water Analysis Report

Company: WPX

Submitted by: RYON NICKLE

Attention: LAB

Lease NABORS 577

Well # PA 413-29

Date: 4/8/2012

Date Rec.: 4/8/2012

S.O.# 9396771

Job Type: SURFACE

Specific Gravity	<i>MAX</i>	<b>1</b>
pH	<i>8</i>	<b>8</b>
Potassium (K)	<i>5000</i>	<b>150</b> Mg / L
Hrdness	<i>500</i>	<b>290</b> Mg / L
Iron (FE2)	<i>300</i>	<b>30</b> Mg / L
Chlorides (Cl)	<i>3000</i>	<b>0</b> Mg / L
Sulfates (SO <sub>4</sub> )	<i>1500</i>	<b>&lt;200</b> Mg / L
Temp	<i>40-80</i>	<b>49</b> Deg
Total Dissolved Solids		<b>460</b> Mg / L

Respectfully: RYON NICKLE

Title: CEMENTING SUPERVISOR

Location: Grand Junction, CO

NOTICE: This report is limited to the described sample tested. Any person using or relying on this report agrees that Halliburton shall not be liable for any loss or damage whether due to act or omission resulting from such report or it

<b>Sales Order #:</b> 9396771	<b>Line Item:</b> 10	<b>Survey Conducted Date:</b> 4/8/2012
<b>Customer:</b> WPX ENERGY ROCKY MOUNTAIN LLC-EBUS		<b>Job Type (BOM):</b> CMT SURFACE CASING BOM
<b>Customer Representative:</b> W.C. WILSON		<b>API / UWI: (leave blank if unknown)</b> 05-045-19505
<b>Well Name:</b> PA		<b>Well Number:</b> 413-29
<b>Well Type:</b> Development Well	<b>Well Country:</b> United States of America	
<b>H2S Present:</b> No	<b>Well State:</b> Colorado	<b>Well County:</b> Garfield

Dear Customer,

We hope that you were satisfied with the service quality of this job performed by Halliburton. It is the aim of our management and service personnel to deliver equipment and service of a standard unmatched in the service sector of the energy industry.

Please take the time to let us know if our performance met with your satisfaction. Please be as critical as possible to ensure we constantly improve our service. Your comments are of great value to us and are intended for the exclusive use of Halliburton.

### CUSTOMER SATISFACTION SURVEY

CATEGORY	CUSTOMER SATISFACTION RESPONSE	
Survey Conducted Date	The date the survey was conducted	4/8/2012
Survey Interviewer	The survey interviewer is the person who initiated the survey.	RYON NICKLE (HB22175)
Customer Participation	Did the customer participate in this survey? (Y/N)	Yes
Customer Representative	Enter the Customer representative name	W.C. WILSON
HSE	Was our HSE performance satisfactory? Circle Y or N	Yes
Equipment	Were you satisfied with our Equipment? Circle Y or N	Yes
Personnel	Were you satisfied with our people? Circle Y or N	Yes
Customer Comment	Customer's Comment	

<b>CUSTOMER SIGNATURE</b>
---------------------------

<b>Sales Order #:</b> 9396771	<b>Line Item:</b> 10	<b>Survey Conducted Date:</b> 4/8/2012
<b>Customer:</b> WPX ENERGY ROCKY MOUNTAIN LLC-EBUS		<b>Job Type (BOM):</b> CMT SURFACE CASING BOM
<b>Customer Representative:</b> W.C. WILSON		<b>API / UWI: (leave blank if unknown)</b> 05-045-19505
<b>Well Name:</b> PA		<b>Well Number:</b> 413-29
<b>Well Type:</b> Development Well	<b>Well Country:</b> United States of America	
<b>H2S Present:</b> No	<b>Well State:</b> Colorado	<b>Well County:</b> Garfield

*KEY PERFORMANCE INDICATORS*

General	
<b>Survey Conducted Date</b> The date the survey was conducted	4/8/2012

Cementing KPI Survey	
<b>Type of Job</b> Select the type of job. (Cementing or Non-Cementing)	0
<b>Select the Maximum Deviation range for this Job</b> What is the highest deviation for the job you just completed? This may not be the maximum well deviation.	Vertical
<b>Total Operating Time (hours)</b> Total Operating Hours Including Rig-up, Pumping, Rig-down. Enter in decimal format.	2
<b>HSE Incident, Accident, Injury</b> HSE Incident, Accident, Injury. This should be recordable incidents only.	No
<b>Was the job purpose achieved?</b> Was the job delivered correctly as per customer agreed design?	Yes
<b>Operating Hours (Pumping Hours)</b> Total number of hours pumping fluid on this job. Enter in decimal format.	1
<b>Customer Non-Productive Rig Time (hrs)</b> Lost time due to Halliburton in the start, execution, or completion of an ordered service or product, or delays in a follow-on service. Enter in decimal format. 0 if none.	0
<b>Type of Rig Classification Job Was Performed</b> Type Of Rig (classification) Job Was Performed On	Drilling Rig (Portable)
<b>Number Of JSAs Performed</b> Number Of Jsas Performed	5
<b>Number of Unplanned Shutdowns</b> Unplanned shutdown is when injection stops for any period of time.	0
<b>Was this a Primary Cement Job (Yes / No)</b>	Yes

<b>Sales Order #:</b> 9396771	<b>Line Item:</b> 10	<b>Survey Conducted Date:</b> 4/8/2012
<b>Customer:</b> WPX ENERGY ROCKY MOUNTAIN LLC-EBUS		<b>Job Type (BOM):</b> CMT SURFACE CASING BOM
<b>Customer Representative:</b> W.C. WILSON		<b>API / UWI: (leave blank if unknown)</b> 05-045-19505
<b>Well Name:</b> PA		<b>Well Number:</b> 413-29
<b>Well Type:</b> Development Well	<b>Well Country:</b> United States of America	
<b>H2S Present:</b> No	<b>Well State:</b> Colorado	<b>Well County:</b> Garfield

Primary Cement Job= Casing job, Liner job, or Tie-back job.	
<b>Did We Run Wiper Plugs?</b> Did We Run Top And Bottom Casing Wiper Plugs?	Top
<b>Mixing Density of Job Stayed in Designed Density Range (0-100%)</b> Density Range defined as +/- .20 ppg. Calculation: Total BBLs cement mixed at designed density divided by total BBLs of cement multiplied by 100	96.5
<b>Was Automated Density Control Used?</b> Was Automated Density Control (ADC) Used ?	Yes
<b>Pump Rate (percent) of Job Stayed At Designed Pump Rate</b> Pump Rate range defined as +/- 1bbl/min. Calculation: Total BBLs of fluid pumped at the designed rate divided by Total BBLs of fluid pumped, multiplied by 100	96.5
<b>Nbr of Remedial Sqz Jobs Rqd - Competition</b> Number Of Remedial Squeeze Jobs Required After Primary Job Performed By Competition	0
<b>Nbr of Remedial Plug Jobs Rqd - HES</b> Number Of Remedial Plug Jobs Needed After Primary Plug Pumped By HES	0
<b>Nbr of Remedial Sqz Jobs Rqd - HES</b> Number Of Remedial Squeeze Jobs Required After Primary Job Performed By HES	0