
WPX ENERGY ROCKY MOUNTAIN LLC-EBUS

**PA 523-29
Parachute
Garfield County , Colorado**

Cement Surface Casing **26-Jan-2012**

Post Job Report

The Road to Excellence Starts with Safety

Sold To #: 300721	Ship To #: 2900680	Quote #:	Sales Order #: 9185956
Customer: WPX ENERGY ROCKY MOUNTAIN LLC-EBUS		Customer Rep: David, Buddy	
Well Name: PA		Well #: 523-29	API/UWI #: 05-045-19512
Field: Parachute	City (SAP): PARACHUTE	County/Parish: Garfield	State: Colorado
Contractor: H&P 280		Rig/Platform Name/Num: H&P 280	
Job Purpose: Cement Surface Casing			
Well Type: Development Well		Job Type: Cement Surface Casing	
Sales Person: SCOTT, KYLE	Srvs Supervisor: JAMISON, PRICE		MBU ID Emp #: 229155

Job Personnel

HES Emp Name	Exp Hrs	Emp #	HES Emp Name	Exp Hrs	Emp #	HES Emp Name	Exp Hrs	Emp #
DEUSSEN, EDWARD Eric	9.0	485182	JAMISON, PRICE W	9.0	229155	LINN, PAUL Andrew	9.0	479143
VANALSTYNE, TROY L	9.0	420256						

Equipment

HES Unit #	Distance-1 way	HES Unit #	Distance-1 way	HES Unit #	Distance-1 way	HES Unit #	Distance-1 way
10722398	60 mile	10744648C	60 mile	11139330	60 mile	11583934	60 mile
11749220	60 mile	11808845	60 mile				

Job Hours

Date	On Location Hours	Operating Hours	Date	On Location Hours	Operating Hours	Date	On Location Hours	Operating Hours
1/26/12	1.5	9						

TOTAL	Total is the sum of each column separately							
--------------	--	--	--	--	--	--	--	--

Job

Formation Name	Top	Bottom	Called Out	Date	Time	Time Zone
Formation Depth (MD)			On Location	26 - Jan - 2012	00:30	MST
Form Type	BHST		Job Started	26 - Jan - 2012	04:30	MST
Job depth MD	2318. ft	Job Depth TVD	Job Started	26 - Jan - 2012	12:00	MST
Water Depth		Wk Ht Above Floor	Job Completed	26 - Jan - 2012	13:14	MST
Perforation Depth (MD)	From	To	Departed Loc	26 - Jan - 2012	14:30	MST

Well Data

Description	New / Used	Max pressure psig	Size in	ID in	Weight lbm/ft	Thread	Grade	Top MD ft	Bottom MD ft	Top TVD ft	Bottom TVD ft
OPEN HOLE				13.5				.	2338.	.	2338.
SURFACE CASING	Unknown		9.625	9.001	32.3	8 RD	H-40	.	2318.	.	2318.

Sales/Rental/3rd Party (HES)

Description	Qty	Qty uom	Depth	Supplier
PLUG,CMTG,TOP,9 5/8,HWE,8.16 MIN/9.06 MA	1	EA		

Tools and Accessories

Type	Size	Qty	Make	Depth	Type	Size	Qty	Make	Depth	Type	Size	Qty	Make
Guide Shoe					Packer					Top Plug			
Float Shoe					Bridge Plug					Bottom Plug			
Float Collar					Retainer					SSR plug set			
Insert Float										Plug Container			
Stage Tool										Centralizers			

Miscellaneous Materials

Gelling Agt	Conc	Surfactant	Conc	Acid Type	Qty	Conc	%
Treatment Fld	Conc	Inhibitor	Conc	Sand Type	Size	Qty	

Fluid Data

Stage/Plug #: 1

Fluid #	Stage Type	Fluid Name	Qty	Qty uom	Mixing Density lbm/gal	Yield ft ³ /sk	Mix Fluid Gal/sk	Rate bbl/min	Total Mix Fluid Gal/sk
1	Fresh Water		20.00	bbl	8.4	.0	.0	6.0	
2	Lead Cement	VERSACEM (TM) SYSTEM (452010)	380.0	sacks	12.3	2.38	13.75	8.0	13.75
	13.75 Gal	FRESH WATER							
3	Tail Cement	VERSACEM (TM) SYSTEM (452010)	160.0	sacks	12.8	2.11	11.75	8.0	11.75
	11.75 Gal	FRESH WATER							
4	Displacement Fluid		179.00	bbl	8.4	.0	.0	10.0	
Calculated Values		Pressures		Volumes					
Displacement	178.9	Shut In: Instant		Lost Returns	NO	Cement Slurry	221.2	Pad	
Top Of Cement	SURFACE	5 Min		Cement Returns	29	Actual Displacement	178	Treatment	
Frac Gradient		15 Min		Spacers	20	Load and Breakdown		Total Job	420
Rates									
Circulating	13.5	Mixing	8	Displacement	10	Avg. Job	8		
Cement Left In Pipe	Amount	44.13 ft	Reason	Shoe Joint					
Frac Ring # 1 @	ID		Frac ring # 2 @	ID		Frac Ring # 3 @	ID	Frac Ring # 4 @	ID
The Information Stated Herein Is Correct				Customer Representative Signature					

The Road to Excellence Starts with Safety

Sold To #: 300721		Ship To #: 2900680		Quote #:		Sales Order #: 9185956	
Customer: WPX ENERGY ROCKY MOUNTAIN LLC-EBUS				Customer Rep: David, Buddy			
Well Name: PA			Well #: 523-29			API/UWI #: 05-045-19512	
Field: Parachute		City (SAP): PARACHUTE		County/Parish: Garfield		State: Colorado	
Legal Description:							
Lat: N 0 deg. OR N 0 deg. 0 min. 0 secs.				Long: E 0 deg. OR E 0 deg. 0 min. 0 secs.			
Contractor: H&P 280			Rig/Platform Name/Num: H&P 280				
Job Purpose: Cement Surface Casing						Ticket Amount:	
Well Type: Development Well			Job Type: Cement Surface Casing				
Sales Person: SCOTT, KYLE			Srvc Supervisor: JAMISON, PRICE			MBU ID Emp #: 229155	

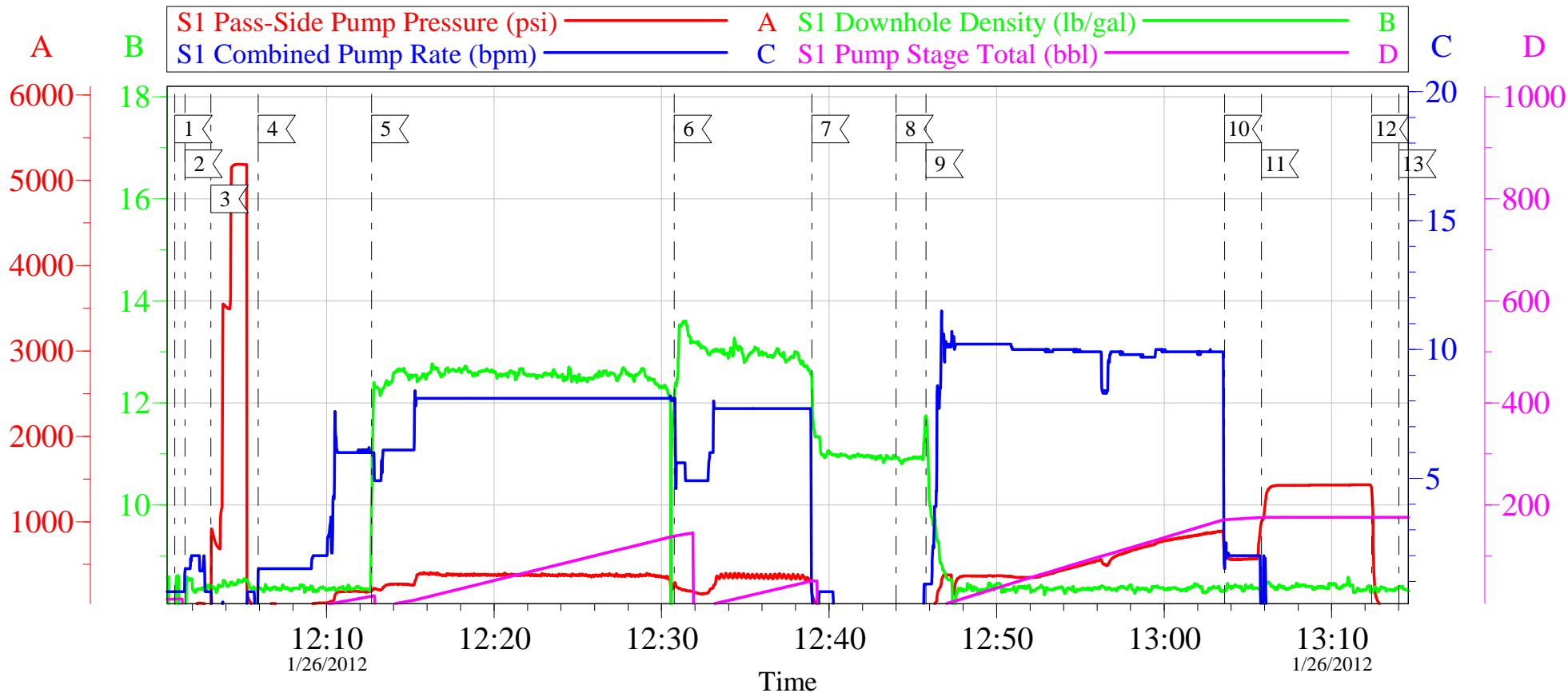
Activity Description	Date/Time	Cht #	Rate bbl/min	Volume bbl		Pressure psig		Comments
				Stage	Total	Tubing	Casing	
Call Out	01/26/2012 00:30							TD 2338 HOLE SIZE 13.5 TP 2318 CASING 9.625 32.3 # H-40 SHOE JOINT 44.13 FT MUD 9.7 PPG
Depart Yard Safety Meeting	01/26/2012 02:20							
Crew Leave Yard	01/26/2012 02:30							
Arrive At Loc	01/26/2012 04:30							
Assessment Of Location Safety Meeting	01/26/2012 04:45							
Pre-Rig Up Safety Meeting	01/26/2012 10:30							
Pre-Job Safety Meeting	01/26/2012 11:30							
Start Job	01/26/2012 12:00							
Prime Pumps	01/26/2012 12:01		2	2			44.0	FRESH WATER
Test Lines	01/26/2012 12:03						5000.0	
Pump Spacer 1	01/26/2012 12:05		6	20			188.0	FRESH WATER
Pump Lead Cement	01/26/2012 12:12		8	161			395.0	MIXED @ 12.3 PPG YIELD 2.38 WAT/REQ 13.75 380 SKS
Pump Tail Cement	01/26/2012 12:30		8	60.1			395.0	MIXED @ 12.8 PPG YIELD 2.11 WAT/REQ 11.75 160 SKS
Shutdown	01/26/2012 12:38							
Drop Plug	01/26/2012 12:44							

Cementing Job Log

Activity Description	Date/Time	Cht #	Rate bbl/ min	Volume bbl		Pressure psig		Comments
				Stage	Total	Tubing	Casing	
Pump Displacement	01/26/2012 12:45		10					FRESH WATER
Slow Rate	01/26/2012 13:03		2	169			898.0	
Bump Plug	01/26/2012 13:05		2	178.9			600.0	PRESSURE UP TO 1426 PSI
Check Floats	01/26/2012 13:12							FLOATS HELD
End Job	01/26/2012 13:14							CEMENT BACK TO SURFACE 29 BBLS
Post-Job Safety Meeting (Pre Rig-Down)	01/26/2012 13:20							GOOD RETURNS THROUGHOUT JOB
Depart Location Safety Meeting	01/26/2012 14:20							CASING WAS NOT MOVED THROUGHOUT JOB
Crew Leave Location	01/26/2012 14:30							THANKS FOR USING HALLIBURTON BILL JAMISON & CREW

WPX ENERGY PA 523-29

9.625 SURFACE CASING



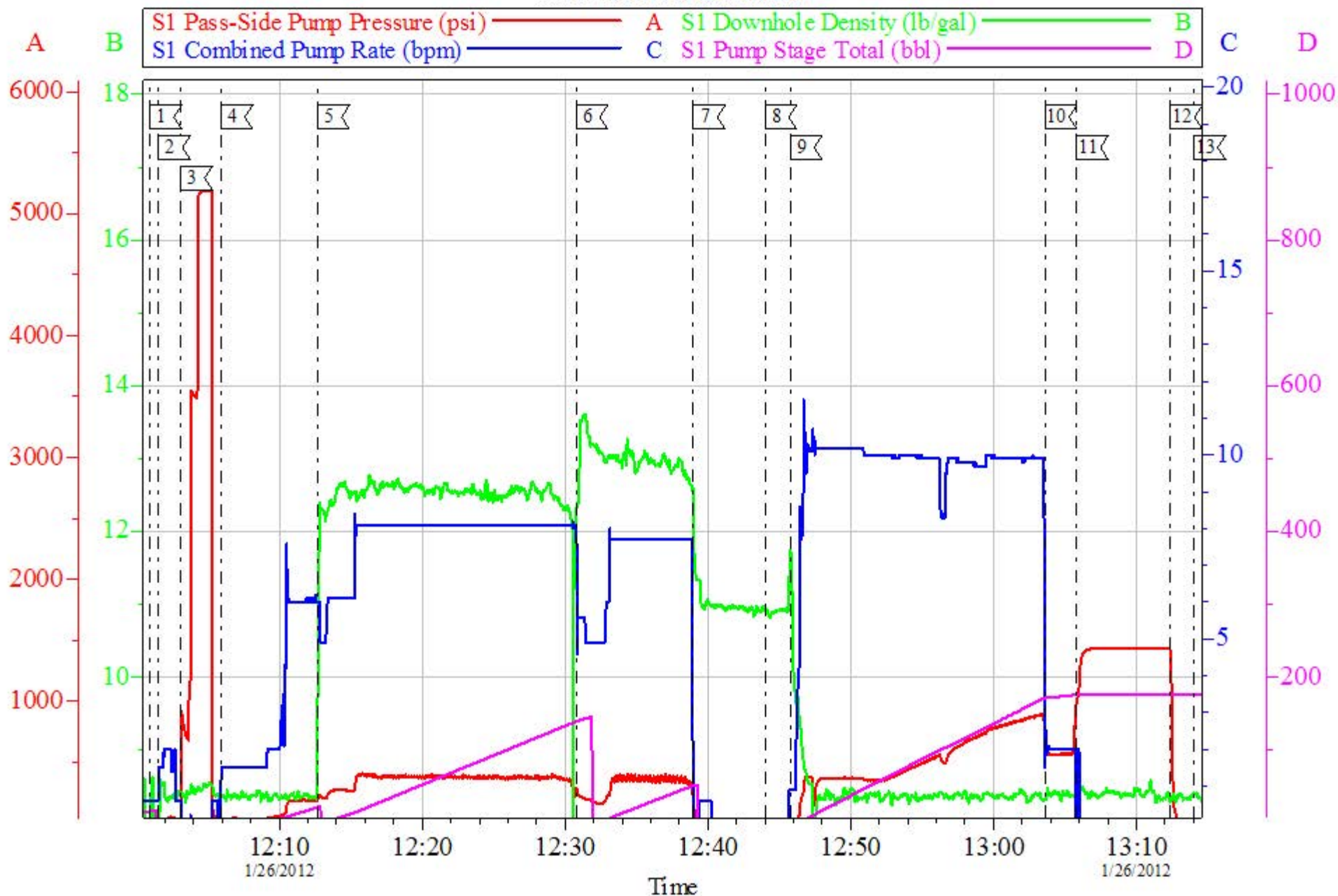
Local Event Log					
1	START JOB	12:00:57	2	PRIME LINES	12:01:33
3	TEST LINES	12:03:06	4	START FRESH WATER SPACER	12:05:55
5	START LEAD CEMENT	12:12:41	6	START TAIL CEMENT	12:30:46
7	SHUT DOWN	12:38:59	8	DROP PLUG	12:44:00
9	START DISPLACEMENT	12:45:47	10	SLOW RATE	13:03:37
11	BUMP PLUG	13:05:48	12	CHECK FLOATS	13:12:23
13	END JOB	13:14:01			

Customer:	WPX ENERGY	Job Date:	26-Jan-2012	Sales Order #:	9185956
Well Description:	PA 523-29	Job Type:	CEMENT	ADC Used:	YES
Company Rep:	BUDDY DAVID	Cement Supervisor:	BILL JAMISON	Elite # 6	ED DEUSSEN

OptiCem v6.4.10
26-Jan-12 14:04

WPX ENERGY PA 523-29

9.625 SURFACE CASING



Customer: WPXENERGY

Well Description: PA 523-29

Company Rep: BUDDY DAVID

Job Date: 26-Jan-2012

Job Type: CEMENT

Cement Supervisor: BILL JAMISON

Sales Order #: 9185956

ADC Used: YES

Elite # 6 ED DEUSSEN

OptiCem v6.4.10

26-Jan-12 14:03

HALLIBURTON

Water Analysis Report

Company: WILLIAMS

Submitted by: BILL JAMISON

Attention: J.Trout

Lease PA

Well # 523-29

Date: 1/26/2012

Date Rec.: 1/26/2012

S.O.# 9185956

Job Type: SURFACE

Specific Gravity	<i>MAX</i>	<i>1</i>
pH	<i>8</i>	<i>6.8</i>
Potassium (K)	<i>5000</i>	<i>450</i> Mg / L
Calcium (Ca)	<i>500</i>	<i>120</i> Mg / L
Iron (FE2)	<i>300</i>	<i>0</i> Mg / L
Chlorides (Cl)	<i>3000</i>	<i>0</i> Mg / L
Sulfates (SO ₄)	<i>1500</i>	<i>-200</i> Mg / L
Chlorine (Cl ₂)		<i>0</i> Mg / L
Temp	<i>40-80</i>	<i>35</i> Deg
Total Dissolved Solids		<i>420</i> Mg / L

Respectfully: BILL JAMISON

Title: CEMENTING SUPERVISOR

Location: Grand Junction, CO

NOTICE:

This report is limited to the described sample tested. Any person using or relying on this report agrees that Halliburton shall not be liable for any loss or damage whether due to act or omission resulting from such report or

Sales Order #: 9185956	Line Item: 10	Survey Conducted Date: 1/26/2012
Customer: WPX ENERGY ROCKY MOUNTAIN LLC-EBUS		Job Type (BOM): CMT SURFACE CASING BOM
Customer Representative: BUDDY DAVID		API / UWI: (leave blank if unknown) 05-045-19512
Well Name: PA		Well Number: 523-29
Well Type: Development Well	Well Country: United States of America	
H2S Present:	Well State: Colorado	Well County: Garfield

Dear Customer,

We hope that you were satisfied with the service quality of this job performed by Halliburton. It is the aim of our management and service personnel to deliver equipment and service of a standard unmatched in the service sector of the energy industry.

Please take the time to let us know if our performance met with your satisfaction. Please be as critical as possible to ensure we constantly improve our service. Your comments are of great value to us and are intended for the exclusive use of Halliburton.

CUSTOMER SATISFACTION SURVEY

CATEGORY	CUSTOMER SATISFACTION RESPONSE	
Survey Conducted Date	The date the survey was conducted	1/26/2012
Survey Interviewer	The survey interviewer is the person who initiated the survey.	PRICE JAMISON (HAL9235)
Customer Participation	Did the customer participate in this survey? (Y/N)	Yes
Customer Representative	Enter the Customer representative name	BUDDY DAVID
HSE	Was our HSE performance satisfactory? Circle Y or N	Yes
Equipment	Were you satisfied with our Equipment? Circle Y or N	Yes
Personnel	Were you satisfied with our people? Circle Y or N	Yes
Customer Comment	Customer's Comment	NONE

CUSTOMER SIGNATURE

Sales Order #: 9185956	Line Item: 10	Survey Conducted Date: 1/26/2012
Customer: WPX ENERGY ROCKY MOUNTAIN LLC-EBUS		Job Type (BOM): CMT SURFACE CASING BOM
Customer Representative: BUDDY DAVID		API / UWI: (leave blank if unknown) 05-045-19512
Well Name: PA		Well Number: 523-29
Well Type: Development Well	Well Country: United States of America	
H2S Present:	Well State: Colorado	Well County: Garfield

KEY PERFORMANCE INDICATORS

General	
Survey Conducted Date The date the survey was conducted	1/26/2012

Cementing KPI Survey	
Type of Job Select the type of job. (Cementing or Non-Cementing)	0
Select the Maximum Deviation range for this Job What is the highest deviation for the job you just completed? This may not be the maximum well deviation.	Deviated
Total Operating Time (hours) Total Operating Hours Including Rig-up, Pumping, Rig-down. Enter in decimal format.	3
HSE Incident, Accident, Injury HSE Incident, Accident, Injury. This should be recordable incidents only.	No
Was the job purpose achieved? Was the job delivered correctly as per customer agreed design?	Yes
Operating Hours (Pumping Hours) Total number of hours pumping fluid on this job. Enter in decimal format.	1.5
Customer Non-Productive Rig Time (hrs) Lost time due to Halliburton in the start, execution, or completion of an ordered service or product, or delays in a follow-on service. Enter in decimal format. 0 if none.	0
Type of Rig Classification Job Was Performed Type Of Rig (classification) Job Was Performed On	Drilling Rig (Portable)
Number Of JSAs Performed Number Of Jsas Performed	5
Number of Unplanned Shutdowns Unplanned shutdown is when injection stops for any period of time.	0
Was this a Primary Cement Job (Yes / No)	Yes

Sales Order #: 9185956	Line Item: 10	Survey Conducted Date: 1/26/2012
Customer: WPX ENERGY ROCKY MOUNTAIN LLC-EBUS		Job Type (BOM): CMT SURFACE CASING BOM
Customer Representative: BUDDY DAVID		API / UWI: (leave blank if unknown) 05-045-19512
Well Name: PA		Well Number: 523-29
Well Type: Development Well	Well Country: United States of America	
H2S Present:	Well State: Colorado	Well County: Garfield

Primary Cement Job= Casing job, Liner job, or Tie-back job.	
Did We Run Wiper Plugs? Did We Run Top And Bottom Casing Wiper Plugs?	Top
Mixing Density of Job Stayed in Designed Density Range (0-100%) Density Range defined as +/- .20 ppg. Calculation: Total BBLs cement mixed at designed density divided by total BBLs of cement multiplied by 100	98
Was Automated Density Control Used? Was Automated Density Control (ADC) Used ?	Yes
Pump Rate (percent) of Job Stayed At Designed Pump Rate Pump Rate range defined as +/- 1bbl/min. Calculation: Total BBLs of fluid pumped at the designed rate divided by Total BBLs of fluid pumped, multiplied by 100	98
Nbr of Remedial Sqz Jobs Rqd - Competition Number Of Remedial Squeeze Jobs Required After Primary Job Performed By Competition	0
Nbr of Remedial Plug Jobs Rqd - HES Number Of Remedial Plug Jobs Needed After Primary Plug Pumped By HES	0
Nbr of Remedial Sqz Jobs Rqd - HES Number Of Remedial Squeeze Jobs Required After Primary Job Performed By HES	0