



XTO - Wellbore Diagram

Well Name: Apache Canyon 30-12

API/UWI	E/W Dist (ft)	E/W Ref	N/S Dist (ft)	N/S Ref	Location	Field Name	County	State
05071098790000	164.0	FWL	1,746.0	FSL	T34S-R67W-S30	Purgatoire River	Las Animas	Colorado
Well Configuration Type	XTO ID B	Orig KB Elev (ft)	Gr Elev (ft)	KB-Grd (ft)	Spud Date	PBTD (All) (ftKB)	Total Depth (ftKB)	Method Of Production
Vertical	97182		8,256.00		7/20/2011	Original Hole - 2492.0	2,566.0	

Well Config: Vertical - Original Hole, 8/3/2012 10:47:00 AM

Schematic - Actual		Incl	ftKB (TVD)	ftKB (MD)	Zones						
					Zone		Top (ftKB)		Btm (ftKB)		
				-10	Raton		533.5		1,846.0		
				0	Vermejo		2,046.0		2,308.0		
				3	Casing Strings						
				5	Casing Description	OD (in)	Wt (lbs/ft)	String Grade	Top Connection	Set Depth (ftKB)	
				7	Conductor	13 3/8	54.50	J-55	ST&C	45.7	
				15	Casing Description	OD (in)	Wt (lbs/ft)	String Grade	Top Connection	Set Depth (ftKB)	
				23	Surface	8 5/8	24.00	J-55	ST&C	467.9	
				45	Casing Description	OD (in)	Wt (lbs/ft)	String Grade	Top Connection	Set Depth (ftKB)	
				46	Production	5 1/2	15.50	J-55	LT&C	2,538.2	
				46	Item Description	OD (in)	Wt (lbs/ft)	Grade	Top (ftKB)	Bottom (ftKB)	
				106	Stage Tool	5 1/2			1,850.5	1,852.9	
				467	Item Description	OD (in)	Wt (lbs/ft)	Grade	Top (ftKB)	Bottom (ftKB)	
				468	External Casing Packer	5 1/2			1,852.9	1,859.5	
				475	Cement						
				533	Description	Type			String		
				535	Conductor Casing Cement	casing			Conductor, 45.7ftKB		
				677	Comment						
				679	Pump 12 bbl water, circ to surf, check fall back, ok, mix & pump 75 sx Trinidad surf blend, 14.0 ppg, 1.66 yield, disp2.5 bbl water, final pump press @ 57 psi, circ 11 bbl cement to surf, no fall back, PD @ 14:30 hrs, 7/20/2011.						
				696							
				697							
				850							
				853	Description	Type			String		
				889	Surface Casing Cement	casing			Surface, 467.9ftKB		
				891	Comment						
				1,003	RU Halliburton, pump 44 bbl water, obtain circ to surf, check fall back, ok, mix & pump 225 sx Trinidad surf blend, 14.0 ppg, 1.65 yield, circ 31 bbl cement to surf, held ok, disp w/ 23.5 bbl water, final pump press @ 96 psi, circ 31 bbl cement to surf, PD @ 05:00 hrs, 7/21/2011.						
				1,005							
				1,138							
				1,139							
				1,181							
				1,182	Description	Type			String		
				1,213	Production Casing Cement	casing			Production, 2,538.2ftKB		
				1,216	Comment						
				1,275	RU Halliburton, 1st stage: pump 20 bbl water, 40 bbl gel water w/ poly-flakes, mix # pump 120 sx Tuned light system, 10.0 ppg, 2.3 yield, drop plug, disp w/ 59.3 bbl water, final pump press @ 60 psi, circ 20 bbl cement to surf f/ first stage, bump plug @ 750 psi, drop bomb, set packer, open DV tool @ 2150 psi, 2nd stage: pump 30 bbl gel water w/ 50# poly-flakes, mix & pump 250 sx Tuned light system, 10.0 ppg, 2.3 yield, drop plug, disp w/ 44 bbl water, final pump press @ 260 psi, circ19 bbl good cement to surf, bump plug @ 1850 psi, float held ok PD @ 16:30 hrs, 7/22/2011.						
				1,278							
				1,307							
				1,308							
				1,721							
				1,722							
				1,766							
				1,767							
				1,820							
				1,823							
				1,845							
				1,846							
				1,846							
				1,850							
				1,853							
				1,860							
				2,046							
				2,047							
				2,087							
				2,089							
				2,231							
				2,232							
				2,290							
				2,293							
				2,306							
				2,308							
				2,371							
				2,373							
				2,375							
				2,386							
				2,387							
				2,389							
				2,389							
				2,491							
				2,492							
				2,492							
				2,537							
				2,538							
				2,566							

Top (MD):534,
Des:Raton

Top (MD):2,046,
Des:Vermejo

PBTD,
2,492

TD, 2,566

Perforations							
Date	Top (ftKB)	Btm (ftKB)	Shot Dens (shots/ft)	Hole Diameter (in)	Phasing (°)	Curr... Status	Zone
7/9/2012	533.5	535.5	4.0	0.420	120		Raton
7/9/2012	677.0	679.0	3.0	0.420	120		Raton
7/9/2012	696.0	697.0	3.0	0.420	120		Raton
7/9/2012	850.0	853.0	3.0	0.420	120		Raton
7/9/2012	889.0	891.0	4.0	0.420	120		Raton
7/9/2012	1,002.5	1,004.5	4.0	0.420	120		Raton
7/9/2012	1,138.5	1,139.5	3.0	0.420	120		Raton
7/9/2012	1,181.5	1,182.5	3.0	0.420	120		Raton
7/9/2012	1,213.0	1,216.0	4.0	0.420	120		Raton
7/9/2012	1,275.0	1,278.0	3.0	0.420	120		Raton
7/9/2012	1,307.5	1,308.5	4.0	0.420	120		Raton
7/9/2012	1,721.0	1,722.0	3.0	0.420	120		Raton
7/9/2012	1,766.0	1,767.0	4.0	0.420	120		Raton
7/9/2012	1,820.0	1,822.5	4.0	0.420	120		Raton
7/9/2012	1,845.0	1,846.0	3.0	0.420	120		Raton
7/9/2012	2,046.0	2,047.0	3.0	0.420	120		Vermejo
7/9/2012	2,086.5	2,088.5	3.0	0.420	120		Vermejo
7/9/2012	2,231.0	2,232.0	3.0	0.420	120		Vermejo
7/9/2012	2,290.5	2,292.5	3.0	0.420	120		Vermejo
7/9/2012	2,306.0	2,308.0	4.0	0.420	120		Vermejo

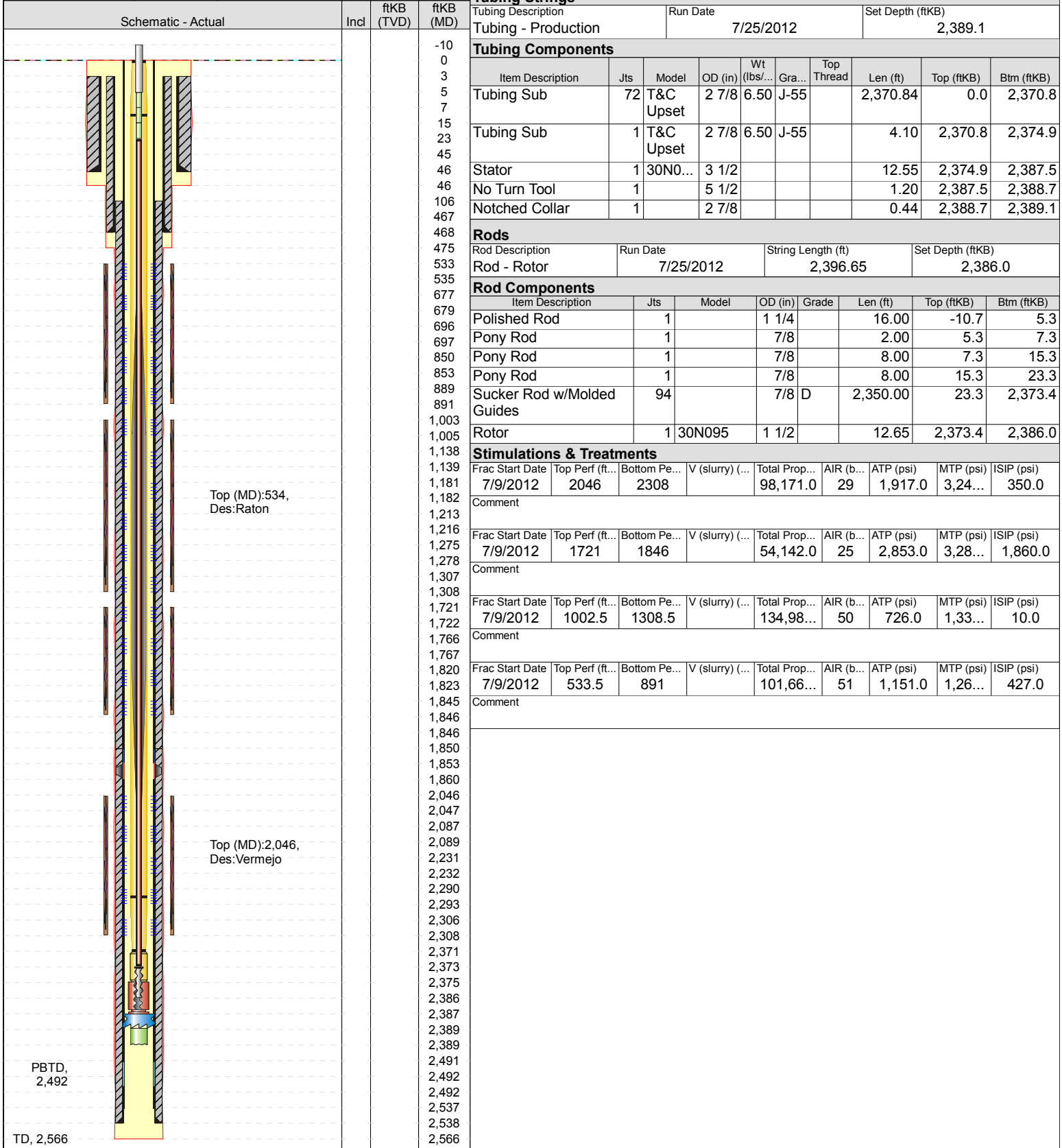


XTO - Wellbore Diagram

Well Name: Apache Canyon 30-12

API/UWI	E/W Dist (ft)	E/W Ref	N/S Dist (ft)	N/S Ref	Location	Field Name	County	State
05071098790000	164.0	FWL	1,746.0	FSL	T34S-R67W-S30	Purgatoire River	Las Animas	Colorado
Well Configuration Type	XTO ID B	Orig KB Elev (ft)	Gr Elev (ft)	KB-Grd (ft)	Spud Date	PBTD (All) (ftKB)	Total Depth (ftKB)	Method Of Production
Vertical	97182		8,256.00		7/20/2011	Original Hole - 2492.0	2,566.0	

Well Config: Vertical - Original Hole, 8/3/2012 10:47:00 AM



Tubing Strings

Tubing Description	Run Date	Set Depth (ftKB)
Tubing - Production	7/25/2012	2,389.1

Tubing Components

Item Description	Jts	Model	OD (in)	Wt (lbs/...)	Gra...	Top Thread	Len (ft)	Top (ftKB)	Btm (ftKB)
Tubing Sub	72	T&C Upset	2 7/8	6.50	J-55		2,370.84	0.0	2,370.8
Tubing Sub	1	T&C Upset	2 7/8	6.50	J-55		4.10	2,370.8	2,374.9
Stator	1	30N0...	3 1/2				12.55	2,374.9	2,387.5
No Turn Tool	1		5 1/2				1.20	2,387.5	2,388.7
Notched Collar	1		2 7/8				0.44	2,388.7	2,389.1

Rods

Rod Description	Run Date	String Length (ft)	Set Depth (ftKB)
Rod - Rotor	7/25/2012	2,396.65	2,386.0

Rod Components

Item Description	Jts	Model	OD (in)	Grade	Len (ft)	Top (ftKB)	Btm (ftKB)
Polished Rod	1		1 1/4		16.00	-10.7	5.3
Pony Rod	1		7/8		2.00	5.3	7.3
Pony Rod	1		7/8		8.00	7.3	15.3
Pony Rod	1		7/8		8.00	15.3	23.3
Sucker Rod w/Molded Guides	94		7/8 D		2,350.00	23.3	2,373.4
Rotor	1	30N095	1 1/2		12.65	2,373.4	2,386.0

Stimulations & Treatments

Frac Start Date	Top Perf (ft...)	Bottom Pe...	V (slurry) (...)	Total Prop...	AIR (b...	ATP (psi)	MTP (psi)	ISIP (psi)
7/9/2012	2046	2308		98,171.0	29	1,917.0	3,24...	350.0
Comment								
Frac Start Date	Top Perf (ft...)	Bottom Pe...	V (slurry) (...)	Total Prop...	AIR (b...	ATP (psi)	MTP (psi)	ISIP (psi)
7/9/2012	1721	1846		54,142.0	25	2,853.0	3,28...	1,860.0
Comment								
Frac Start Date	Top Perf (ft...)	Bottom Pe...	V (slurry) (...)	Total Prop...	AIR (b...	ATP (psi)	MTP (psi)	ISIP (psi)
7/9/2012	1002.5	1308.5		134,98...	50	726.0	1,33...	10.0
Comment								
Frac Start Date	Top Perf (ft...)	Bottom Pe...	V (slurry) (...)	Total Prop...	AIR (b...	ATP (psi)	MTP (psi)	ISIP (psi)
7/9/2012	533.5	891		101,66...	51	1,151.0	1,26...	427.0
Comment								