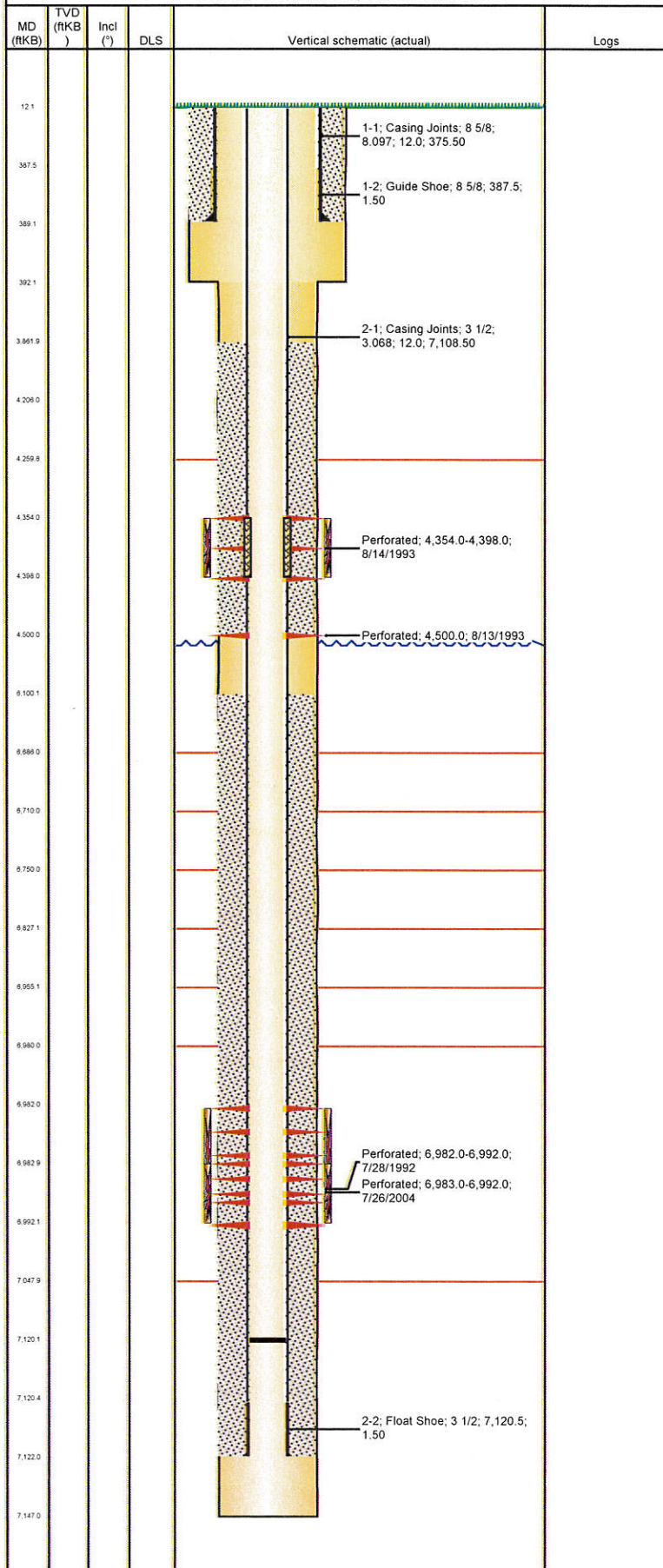


Well Name: SPIKE STATE D16-12

VERTICAL - ORIGINAL HOLE, 8/16/2012 5:50:57 PM



Well Header

API 05-123-15914	Business Unit WATTENBERG	District 15	Well Config VERTICAL
Original KB Elevation (ft) 4,782.00	KB - GL / MSL (ftKB) 12.00	Spud Date 7/14/1992	P & A Date

Comment

100 sx sqz 8/93 - sqz hole @ 4500', test to 3000#

Directions To Well

WCR 3 & WCR 53, East 100' south 0.2 miles to "Y" south east 0.2 into

Surface Location (Congressional)

Quarter 1	Quarter 2	Quarter 3 NW	Quarter 4 SW	Section 16	Township 3	Twnshp... N	Range 64	Rng E/W... W
-----------	-----------	-----------------	-----------------	---------------	---------------	----------------	-------------	-----------------

Bottom Hole Location

North-South Distance (ft)	From N or S Line	East-West Distance (ft)	From E or W Line
---------------------------	------------------	-------------------------	------------------

Plug Back Total Depths

Date	Depth (ftKB)	Method	Com
7/28/1992	7,146.0	CASED HOLE LOG	DEPTH LOGGER ON CBL
8/13/1993	6,800.0	TAG	SAND PLUG
8/23/1996	7,120.0	TAG	CLEAN OUT SAND

Wellbore Sections

Section Des	Size (in)	Act Top (ftKB)	Act Btm (ftKB)
SURFACE	12 1/4	12.0	392.0
PRODUCTION	7 7/8	392.0	7,147.0

Zone Statuses

Zone Name	Status Date	Status	Job
SUSSEX	9/13/1993	PR	RECOMPLETION, 8/13/1993 00:00
SUSSEX	8/26/1996	PR	COMMINGLE ZONES, 8/19/1996 00:00
SUSSEX	7/19/2004	AB	RE-FRAC, 7/15/2004 00:00
CODELL	10/5/1992	PR	DRILLING/COMPLETION - ORIGINAL, 7/14/1992 00:00
CODELL	8/13/1993	SI	RECOMPLETION, 8/13/1993 00:00
CODELL	8/26/1996	PR	COMMINGLE ZONES, 8/19/1996 00:00
CODELL	7/30/2004	PR	RE-FRAC, 7/15/2004 00:00

Casing Strings

Surface, 389.0ftKB

Casing Description	Run Date	OD (in)	Wt/Len (lb/ft)	Grade	Top (ftKB)	Set Depth...
Surface	7/14/1992	8 5/8	24.00	?	12.0	389.0

Production, 7,122.0ftKB

Casing Description	Run Date	OD (in)	Wt/Len (lb/ft)	Grade	Top (ftKB)	Set Depth...
Production	7/18/1992	3 1/2	9.30	J-55	12.0	7,122.0

Cement

Description	Top Depth (ftKB)	Bottom Depth (ftKB)
SURFACE CASING CEMENT	12.0	389.0
PRODUCTION CASING CEMENT	3,862.0	4,206.0
PRODUCTION CASING CEMENT	6,100.0	7,122.0
Remedial Cement Squeeze	3,862.0	4,500.0
Cement Squeeze	4,354.0	4,398.0
Cement Squeeze	4,354.0	4,398.0

Tubing Components

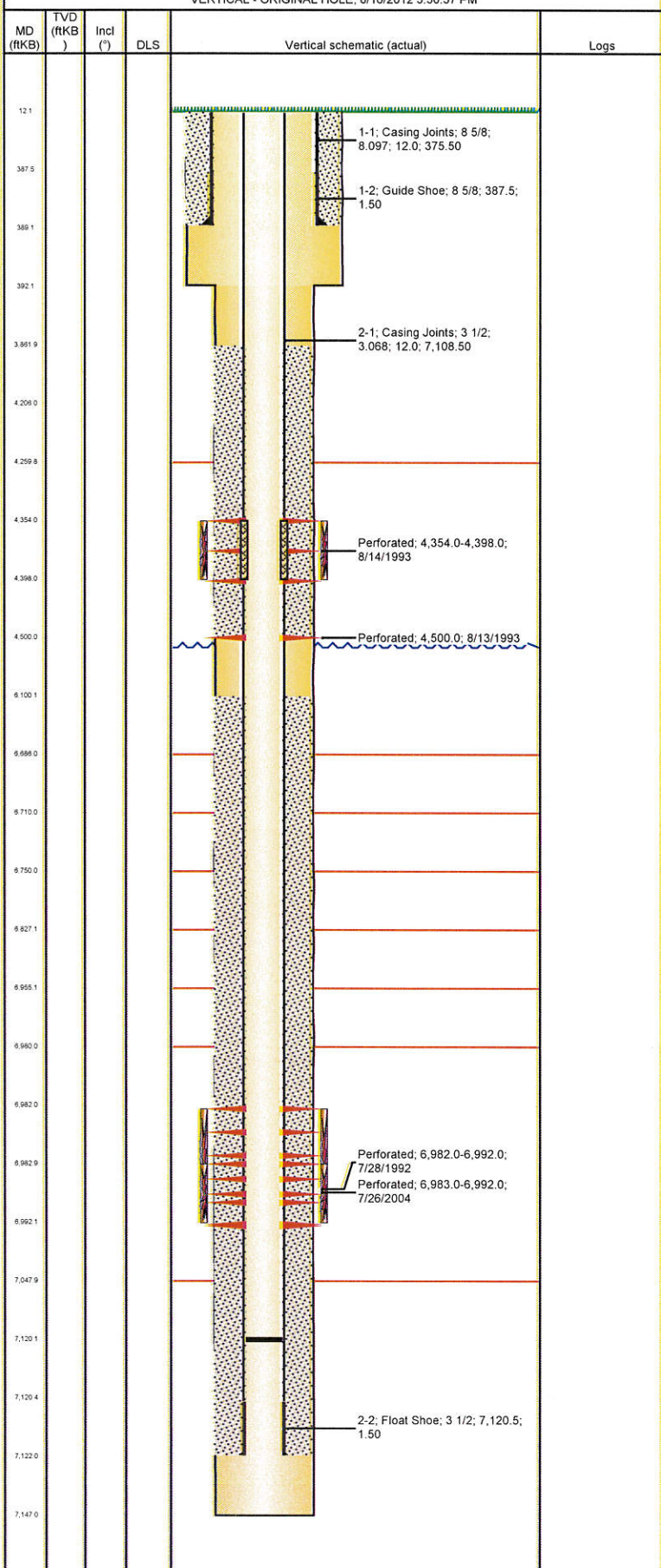
Item Des	OD (in)	Wt (lb/ft)	Grade	Jts	Len (ft)	Btm (ftKB)	Btm (TVD) (ftKB)
----------	---------	------------	-------	-----	----------	------------	------------------

Perforation Data

Zone	Bnch/St g	Entered Shot Total	Top (ftKB)	Btm (ftKB)	Date
SUSSEX, ORIGINAL HOLE		15	4,354.0	4,398.0	8/14/1993
		1	4,500.0	4,500.0	8/13/1993
CODELL, ORIGINAL HOLE		40	6,982.0	6,992.0	7/28/1992
CODELL, ORIGINAL HOLE		36	6,983.0	6,992.0	7/26/2004

Well Name: SPIKE STATE D16-12

VERTICAL - ORIGINAL HOLE, 8/16/2012 5:50:57 PM



Stimulations & Treatments				
Date	Zone	Primary Job Type		
7/29/1992	CODELL, ORIGINAL HOLE	DRILLING/COMPLETION - ORIGINAL		
Technical Result		Tech Result Details		Tech Result Note
Comment				
Date	Zone	Primary Job Type		
8/18/1993	SUSSEX, ORIGINAL HOLE	RECOMPLETION		
Technical Result		Tech Result Details		Tech Result Note
Comment				
Date	Zone	Primary Job Type		
7/29/2004	CODELL, ORIGINAL HOLE	RE-FRAC		
Technical Result		Tech Result Details		Tech Result Note
Comment				
Other In Hole				
Run Date	Des	OD (in)	Top (ftKB)	Btm (ftKB)
Logs				
Date	Type	Top (ftKB)	Btm (ftKB)	
7/17/1992	COMPENSATED DENSITY	4,200.0	7,125.0	
7/17/1992	INDUCTION	4,200.0	4,550.0	
7/28/1992	CEMENT BOND	3,700.0	7,088.0	
8/13/1993	PERFORATION	4,400.0	7,147.0	
12/15/2010	GYRO	12.0	6,900.0	