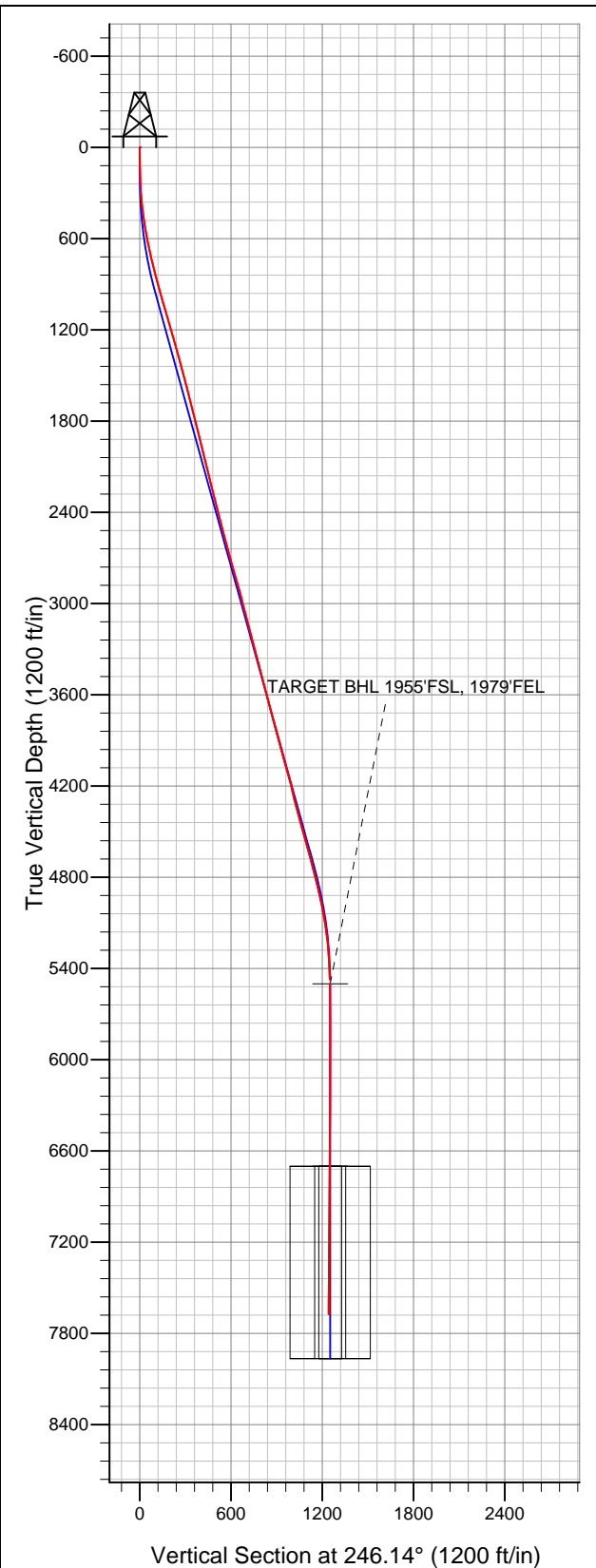


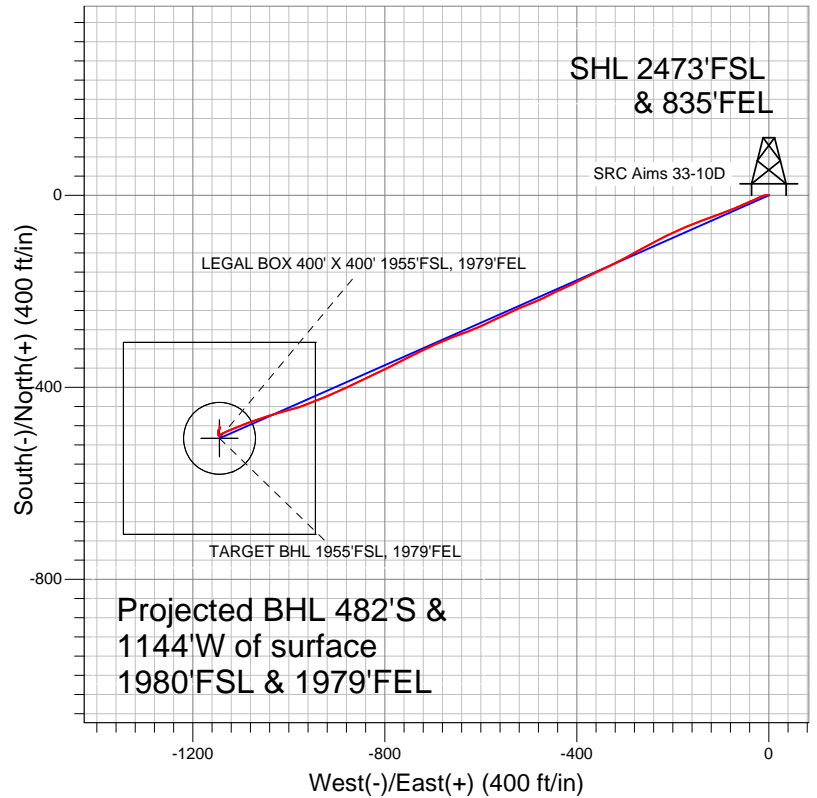
Well Name: SRC Aims 33-10D

Surface Location: SRC Aims/GCC Pad Sec.10-T5N-R66W
North American Datum 1983 US State Plane 1983Colorado Northern Zone
Ground Elevation: 4859.0

+N/-S 0.0	+E/-W 0.0	Northing 1394405.40	Easting 3206251.51	Latitude 40.413680	Longitude -104.759290	Slot
		Original Well Elev	WELL @ 4872.0ft (Original Well Elev)			



Synergy Resources



LEGEND

- Survey #1
- ✚ SRC Aims 33-10D, Wellbore #1, Plan #3 (2-15-12) V0
- Wellbore #1

Final Survey Plot

Projected Final Survey -
7830'MD & 7674'TVD @ 1241'VS
0.80 deg Inc 343.90 deg AZ

Project: SEC.10-T5N-R66W
Site: SRC Aims/GCC Pad Sec.10-T5N-R66W
Well: SRC Aims 33-10D
Plan: Wellbore #1



Synergy Resources

SEC.10-T5N-R66W

SRC Aims/GCC Pad Sec.10-T5N-R66W

SRC Aims 33-10D

Wellbore #1

Survey: Survey #1

Standard Survey Report

08 March, 2012

Company:	Synergy Resources	Local Co-ordinate Reference:	Well SRC Aims 33-10D
Project:	SEC.10-T5N-R66W	TVD Reference:	WELL @ 4872.0ft (Original Well Elev)
Site:	SRC Aims/GCC Pad Sec.10-T5N-R66W	MD Reference:	WELL @ 4872.0ft (Original Well Elev)
Well:	SRC Aims 33-10D	North Reference:	True
Wellbore:	Wellbore #1	Survey Calculation Method:	Minimum Curvature
Design:	Wellbore #1	Database:	Landmark

Project	SEC.10-T5N-R66W, Weld County, Colorado		
Map System:	US State Plane 1983	System Datum:	Mean Sea Level
Geo Datum:	North American Datum 1983		Using Well Reference Point
Map Zone:	Colorado Northern Zone		Using geodetic scale factor

Site	SRC Aims/GCC Pad Sec.10-T5N-R66W				
Site Position:		Northing:	1,394,413.34 ft	Latitude:	40.413700
From:	Lat/Long	Easting:	3,206,329.28 ft	Longitude:	-104.759010
Position Uncertainty:	0.0 ft	Slot Radius:	"	Grid Convergence:	0.48 °

Well	SRC Aims 33-10D					
Well Position	+N/-S	0.0 ft	Northing:	1,394,405.40 ft	Latitude:	40.413680
	+E/-W	0.0 ft	Easting:	3,206,251.51 ft	Longitude:	-104.759290
Position Uncertainty		0.0 ft	Wellhead Elevation:	ft	Ground Level:	4,859.0 ft

Wellbore	Wellbore #1				
Magnetics	Model Name	Sample Date	Declination (°)	Dip Angle (°)	Field Strength (nT)
	IGRF2010	2/15/2012	8.78	67.04	53,108

Design	Wellbore #1			
Audit Notes:				
Version:	1.0	Phase:	ACTUAL	Tie On Depth: 0.0
Vertical Section:	Depth From (TVD) (ft)	+N/-S (ft)	+E/-W (ft)	Direction (°)
	0.0	0.0	0.0	246.14
	5,500.0	0.0	0.0	246.14

Survey Program		Date	3/8/2012	
From (ft)	To (ft)	Survey (Wellbore)	Tool Name	Description
113.0	7,830.0	Survey #1 (Wellbore #1)	MWD	MWD - Standard

Survey										
	Measured Depth (ft)	Inclination (°)	Azimuth (°)	Vertical Depth (ft)	+N/-S (ft)	+E/-W (ft)	Vertical Section (ft)	Dogleg Rate (°/100ft)	Build Rate (°/100ft)	Turn Rate (°/100ft)
Main Survey	0.0	0.00	0.00	0.0	0.0	0.0	0.0	0.00	0.00	0.00
	113.0	0.90	294.70	113.0	0.4	-0.8	0.6	0.80	0.80	0.00
	204.0	1.70	277.60	204.0	0.8	-2.8	2.2	0.97	0.88	-18.79
	296.0	3.90	256.50	295.9	0.3	-7.2	6.5	2.60	2.39	-22.93
	388.0	6.60	246.50	387.5	-2.5	-15.1	14.8	3.09	2.93	-10.87
	481.0	8.50	247.40	479.7	-7.3	-26.3	27.0	2.05	2.04	0.97
	571.0	10.60	245.30	568.4	-13.3	-40.0	42.0	2.36	2.33	-2.33
	662.0	12.10	245.10	657.6	-20.8	-56.2	59.9	1.65	1.65	-0.22
	756.0	13.20	247.90	749.3	-29.0	-75.1	80.5	1.34	1.17	2.98
	848.0	14.70	249.90	838.6	-37.0	-95.8	102.6	1.71	1.63	2.17
	941.0	16.10	250.20	928.3	-45.4	-119.0	127.2	1.51	1.51	0.32
1,035.0	15.70	249.70	1,018.7	-54.2	-143.2	152.9	0.45	-0.43	-0.53	

Company:	Synergy Resources	Local Co-ordinate Reference:	Well SRC Aims 33-10D
Project:	SEC.10-T5N-R66W	TVD Reference:	WELL @ 4872.0ft (Original Well Elev)
Site:	SRC Aims/GCC Pad Sec.10-T5N-R66W	MD Reference:	WELL @ 4872.0ft (Original Well Elev)
Well:	SRC Aims 33-10D	North Reference:	True
Wellbore:	Wellbore #1	Survey Calculation Method:	Minimum Curvature
Design:	Wellbore #1	Database:	Landmark

Survey										
Measured Depth (ft)	Inclination (°)	Azimuth (°)	Vertical Depth (ft)	+N/-S (ft)	+E/-W (ft)	Vertical Section (ft)	Dogleg Rate (°/100ft)	Build Rate (°/100ft)	Turn Rate (°/100ft)	
1,129.0	16.20	247.60	1,109.1	-63.7	-167.3	178.7	0.81	0.53	-2.23	
1,222.0	16.10	245.30	1,198.4	-74.0	-191.0	204.6	0.70	-0.11	-2.47	
1,316.0	15.40	243.50	1,288.9	-85.0	-214.0	230.1	0.91	-0.74	-1.91	
1,410.0	15.70	242.30	1,379.4	-96.5	-236.4	255.3	0.47	0.32	-1.28	
1,503.0	15.00	242.10	1,469.1	-108.0	-258.2	279.8	0.75	-0.75	-0.22	
1,597.0	14.60	241.80	1,560.0	-119.3	-279.4	303.8	0.43	-0.43	-0.32	
1,691.0	14.00	240.20	1,651.1	-130.5	-299.7	326.9	0.76	-0.64	-1.70	
1,784.0	14.80	244.40	1,741.2	-141.2	-320.2	349.9	1.41	0.86	4.52	
1,878.0	13.60	243.70	1,832.3	-151.3	-340.9	373.0	1.29	-1.28	-0.74	
1,972.0	14.20	244.80	1,923.5	-161.1	-361.3	395.6	0.70	0.64	1.17	
2,065.0	13.90	243.20	2,013.7	-171.0	-381.6	418.1	0.53	-0.32	-1.72	
2,159.0	13.80	242.00	2,105.0	-181.4	-401.5	440.6	0.32	-0.11	-1.28	
2,253.0	13.50	247.80	2,196.4	-190.8	-421.6	462.7	1.49	-0.32	6.17	
2,346.0	14.60	244.10	2,286.6	-200.0	-442.2	485.3	1.53	1.18	-3.98	
2,440.0	14.60	242.10	2,377.5	-210.7	-463.3	509.0	0.54	0.00	-2.13	
2,534.0	14.80	247.20	2,468.5	-220.9	-484.9	532.8	1.39	0.21	5.43	
2,628.0	15.10	248.60	2,559.3	-230.0	-507.3	557.0	0.50	0.32	1.49	
2,721.0	14.40	244.60	2,649.2	-239.4	-529.0	580.7	1.33	-0.75	-4.30	
2,815.0	15.80	245.30	2,740.0	-249.8	-551.2	605.2	1.50	1.49	0.74	
2,909.0	15.90	244.80	2,830.4	-260.6	-574.5	630.8	0.18	0.11	-0.53	
3,002.0	15.20	244.60	2,920.0	-271.3	-597.0	655.7	0.75	-0.75	-0.22	
3,096.0	13.80	248.50	3,011.0	-280.7	-618.6	679.3	1.82	-1.49	4.15	
3,190.0	15.80	250.40	3,101.9	-289.1	-641.1	703.2	2.19	2.13	2.02	
3,284.0	14.40	248.10	3,192.6	-297.7	-664.0	727.7	1.62	-1.49	-2.45	
3,377.0	13.90	246.40	3,282.8	-306.5	-685.0	750.4	0.70	-0.54	-1.83	
3,471.0	15.50	246.20	3,373.7	-316.1	-706.8	774.3	1.70	1.70	-0.21	
3,564.0	15.20	242.50	3,463.4	-326.7	-729.0	798.9	1.10	-0.32	-3.98	
3,658.0	14.20	244.80	3,554.3	-337.3	-750.4	822.7	1.23	-1.06	2.45	
3,752.0	14.20	242.10	3,645.5	-347.6	-771.0	845.7	0.70	0.00	-2.87	
3,845.0	14.20	243.20	3,735.6	-358.1	-791.2	868.5	0.29	0.00	1.18	
3,939.0	15.80	243.40	3,826.4	-369.0	-813.0	892.8	1.70	1.70	0.21	
4,032.0	15.80	246.40	3,915.9	-379.8	-835.9	918.1	0.88	0.00	3.23	
4,126.0	15.70	243.50	4,006.4	-390.6	-859.0	943.6	0.84	-0.11	-3.09	
4,220.0	15.30	245.50	4,097.0	-401.4	-881.7	968.7	0.71	-0.43	2.13	
4,313.0	13.30	245.30	4,187.1	-411.0	-902.6	991.7	2.15	-2.15	-0.22	
4,407.0	14.00	248.10	4,278.4	-419.7	-922.9	1,013.8	1.02	0.74	2.98	
4,501.0	15.70	248.50	4,369.3	-428.6	-945.3	1,037.9	1.81	1.81	0.43	
4,594.0	15.90	249.00	4,458.8	-437.8	-968.9	1,063.2	0.26	0.22	0.54	
4,688.0	15.20	255.70	4,549.3	-445.5	-992.9	1,088.2	2.05	-0.74	7.13	
4,782.0	15.20	254.30	4,640.1	-451.8	-1,016.7	1,112.6	0.39	0.00	-1.49	
4,875.0	13.60	251.60	4,730.1	-458.6	-1,038.8	1,135.5	1.87	-1.72	-2.90	
4,969.0	14.20	252.00	4,821.4	-465.6	-1,060.3	1,158.0	0.65	0.64	0.43	
5,063.0	12.90	250.60	4,912.8	-472.7	-1,081.1	1,179.9	1.43	-1.38	-1.49	
5,156.0	11.40	247.40	5,003.7	-479.7	-1,099.4	1,199.5	1.77	-1.61	-3.44	
5,250.0	10.60	247.90	5,095.9	-486.5	-1,116.0	1,217.4	0.86	-0.85	0.53	
5,344.0	6.30	246.50	5,188.9	-491.8	-1,128.7	1,231.2	4.58	-4.57	-1.49	
5,438.0	4.30	244.20	5,282.5	-495.4	-1,136.6	1,239.9	2.14	-2.13	-2.45	
5,531.0	2.60	244.40	5,375.3	-497.8	-1,141.7	1,245.5	1.83	-1.83	0.22	
5,625.0	2.00	246.20	5,469.2	-499.4	-1,145.1	1,249.2	0.64	-0.64	1.91	
5,655.8	1.30	240.83	5,500.0	-499.8	-1,145.9	1,250.1	2.32	-2.27	-17.44	
TARGET BHL 1955'FSL, 1979'FEL										
5,719.0	0.40	134.60	5,563.2	-500.3	-1,146.4	1,250.8	2.32	-1.43	-168.10	
5,812.0	0.60	84.80	5,656.2	-500.5	-1,145.7	1,250.2	0.49	0.22	-53.55	
5,906.0	0.30	133.70	5,750.2	-500.6	-1,145.0	1,249.6	0.49	-0.32	52.02	

Company:	Synergy Resources	Local Co-ordinate Reference:	Well SRC Aims 33-10D
Project:	SEC.10-T5N-R66W	TVD Reference:	WELL @ 4872.0ft (Original Well Elev)
Site:	SRC Aims/GCC Pad Sec.10-T5N-R66W	MD Reference:	WELL @ 4872.0ft (Original Well Elev)
Well:	SRC Aims 33-10D	North Reference:	True
Wellbore:	Wellbore #1	Survey Calculation Method:	Minimum Curvature
Design:	Wellbore #1	Database:	Landmark

Survey										
Measured Depth (ft)	Inclination (°)	Azimuth (°)	Vertical Depth (ft)	+N/-S (ft)	+E/-W (ft)	Vertical Section (ft)	Dogleg Rate (°/100ft)	Build Rate (°/100ft)	Turn Rate (°/100ft)	
6,000.0	0.30	256.70	5,844.2	-500.8	-1,145.0	1,249.8	0.56	0.00	130.85	
6,094.0	0.50	278.90	5,938.2	-500.8	-1,145.7	1,250.4	0.27	0.21	23.62	
6,188.0	0.40	313.00	6,032.2	-500.5	-1,146.3	1,250.8	0.30	-0.11	36.28	
6,281.0	0.40	332.50	6,125.2	-500.0	-1,146.7	1,251.0	0.15	0.00	20.97	
6,375.0	0.60	345.50	6,219.2	-499.3	-1,147.0	1,250.9	0.24	0.21	13.83	
6,469.0	0.60	342.90	6,313.2	-498.3	-1,147.3	1,250.8	0.03	0.00	-2.77	
6,562.0	0.80	343.20	6,406.2	-497.2	-1,147.6	1,250.6	0.22	0.22	0.32	
6,656.0	0.80	1.50	6,500.2	-495.9	-1,147.8	1,250.3	0.27	0.00	19.47	
6,750.0	0.70	1.10	6,594.2	-494.7	-1,147.7	1,249.8	0.11	-0.11	-0.43	
6,844.0	0.80	10.30	6,688.2	-493.5	-1,147.6	1,249.1	0.17	0.11	9.79	
6,855.7	0.80	10.04	6,699.8	-493.3	-1,147.6	1,249.1	0.03	0.00	-2.26	
LEGAL BOX 400' X 400' 1955'FSL, 1979'FEL - TARGET CIRCLE 1955'FSL & 1979'FEL										
6,937.0	0.80	8.20	6,781.2	-492.2	-1,147.4	1,248.4	0.03	0.00	-2.26	
7,031.0	0.90	11.00	6,875.2	-490.8	-1,147.2	1,247.7	0.12	0.11	2.98	
7,125.0	0.80	8.00	6,969.1	-489.5	-1,146.9	1,246.9	0.12	-0.11	-3.19	
7,219.0	0.90	40.00	7,063.1	-488.2	-1,146.4	1,245.9	0.51	0.11	34.04	
7,312.0	1.00	73.00	7,156.1	-487.4	-1,145.1	1,244.4	0.59	0.11	35.48	
7,406.0	0.60	48.40	7,250.1	-486.9	-1,144.0	1,243.1	0.55	-0.43	-26.17	
7,500.0	0.60	358.90	7,344.1	-486.1	-1,143.6	1,242.5	0.53	0.00	-52.66	
7,594.0	0.90	346.40	7,438.1	-484.9	-1,143.8	1,242.2	0.36	0.32	-13.30	
7,687.0	0.80	354.10	7,531.1	-483.5	-1,144.0	1,241.8	0.16	-0.11	8.28	
7,782.0	0.80	343.90	7,626.1	-482.2	-1,144.3	1,241.5	0.15	0.00	-10.74	
7,830.0	0.80	343.90	7,674.1	-481.6	-1,144.5	1,241.5	0.00	0.00	0.00	

Checked By: _____	Approved By: _____	Date: _____
-------------------	--------------------	-------------