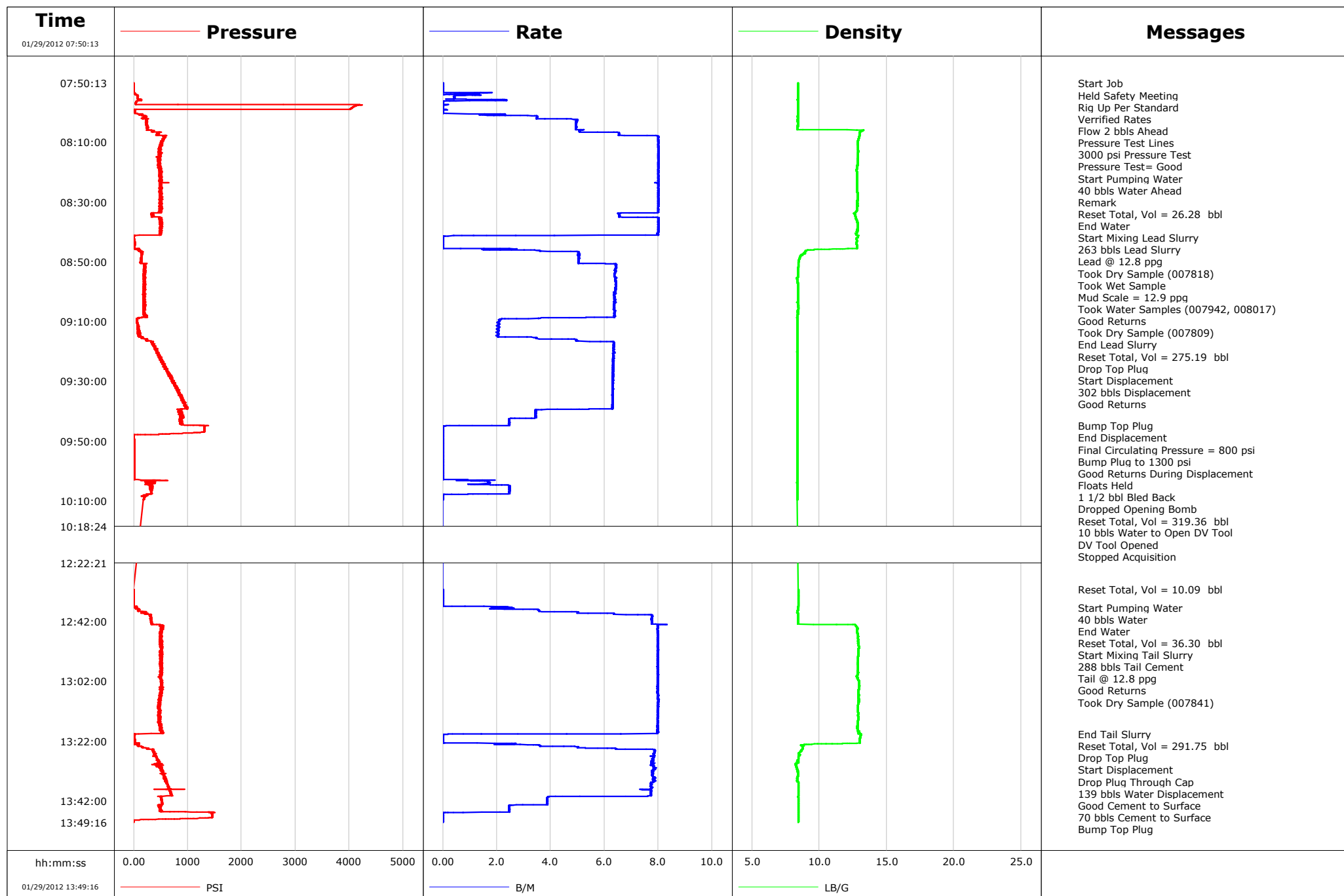


Well RGU 442-25-198
Field Ryan Gulch Unit
Engineer Ryan Bowditch
Country United States

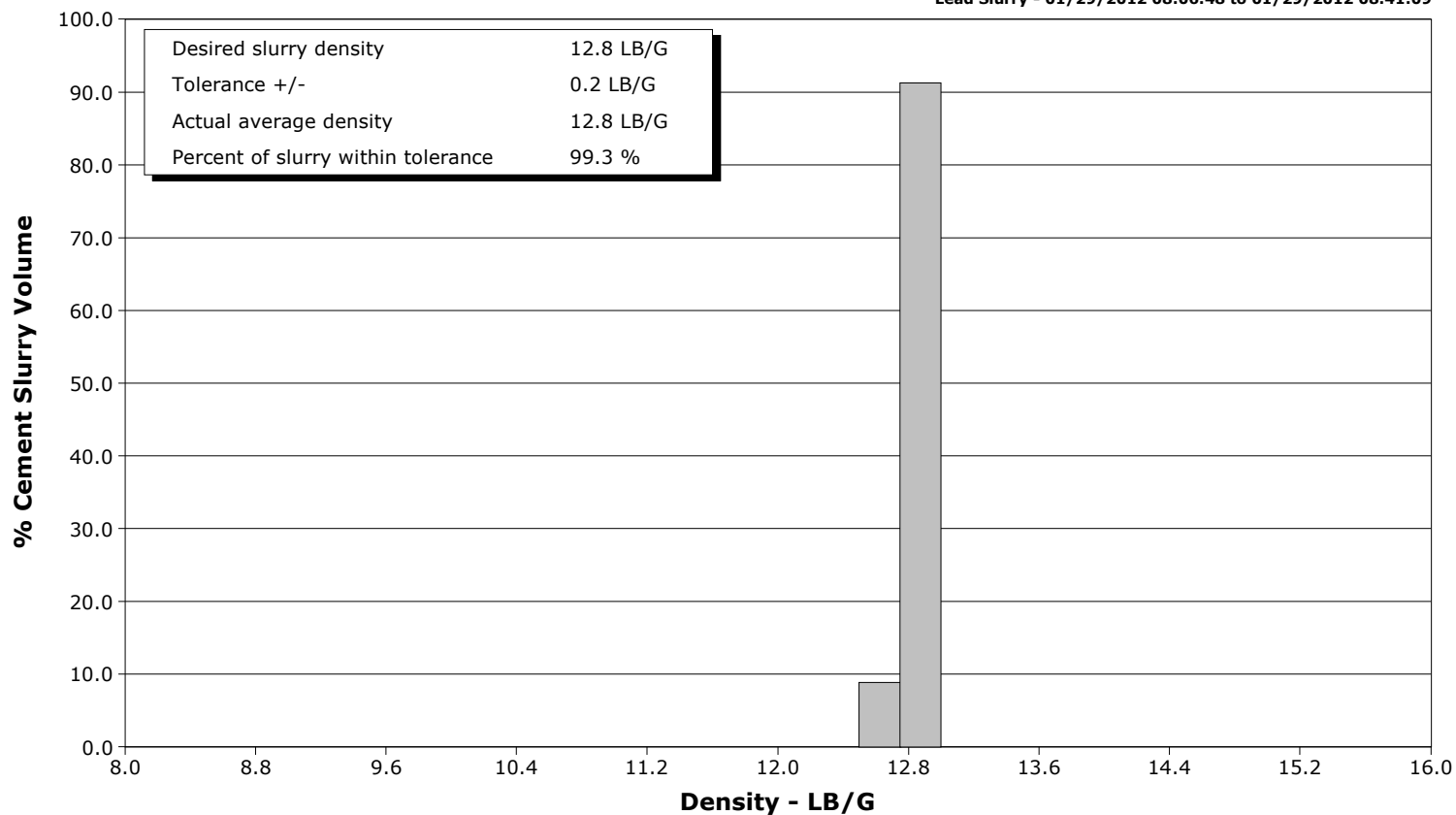
Client WPX Energy
SIR No. BTX1-00066
Job Type 9 5/8" 2-Stage Surface
Job Date 01-29-2012



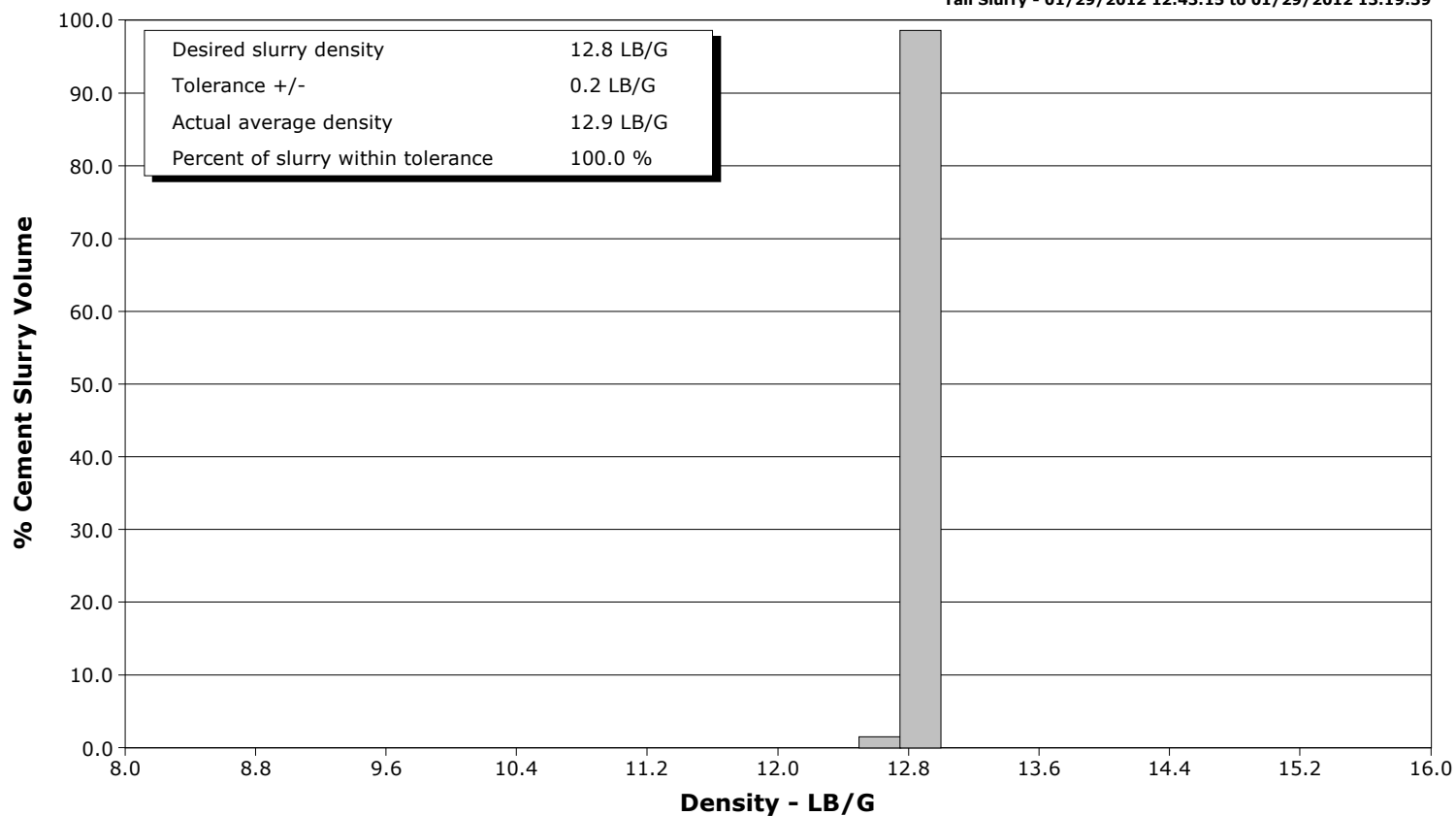
Well RGU 442-25-198
Field Ryan Gulch Unit
Engineer Ryan Bowditch
Country United States

Client WPX Energy
SIR No. BTX1-00066
Job Type 9 5/8" 2-Stage Surface
Job Date 01-29-2012

Lead Slurry - 01/29/2012 08:06:48 to 01/29/2012 08:41:09



Tail Slurry - 01/29/2012 12:43:15 to 01/29/2012 13:19:39



Cementing Service Report

					Customer WPX Energy			Job Number BTX1-00066	
Well RGU 442-25-198			Location (legal)			Schlumberger Location Grand Junction, CO		Job Start Jan/29/2012	
Field Ryan Gulch Unit		Formation Name/Type Shale		Deviation 10 deg		Bit Size 13.5 in		Well MD 3949.0 ft	
County Rio Blanco		State/Province Colorado		BHP psi		BHST degF		BHCT degF	
Well Master		API/UWI						Pore Press. Gradient lb/gal	
Rig Name Cyclone 29		Drilled For Gas		Service Via Land		Casing/Liner			
						Depth, ft		Size, in	
						Weight, lb/ft		Grade	
Offshore Zone		Well Class New		Well Type Development		80.0		18.0	
						3949.0		9.6	
						94.0		36.0	
						K55		8RD	
Drilling Fluid Type		Max. Density lb/gal		Plastic Viscosity cP		Tubing/Drill Pipe			
						T/D		Depth, ft	
						Size, in		Weight, lb/ft	
						Grade		Thread	
Service Line Cementing		Job Type 9 5/8" 2-Stage Surface							
Max. Allowed Tub. Press 3000 psi		Max. Allowed Ann. Press 1500 psi		WH Connection Single Cement head		Perforations/Open Hole			
						Top, ft		Bottom, ft	
						shot/ft		No. of Shots	
								Total Interval ft	
						ft		ft	
						ft		ft	
						Treat Down Casing		Displacement 302.0 bbl	
						Packer Type		Packer Depth ft	
						Tubing Vol. 0.0 bbl		Casing Vol. 305.2 bbl	
						Annular Vol. 187.0 bbl		Openhole Vol. 538.0 bbl	
Casing/Tubing Secured <input checked="" type="checkbox"/>		1 Hole Vol. Circulated prior to Cement <input checked="" type="checkbox"/>				Casing Tools		Squeeze Job	
Lift Pressure 800 psi						Shoe Type Float		Squeeze Type	
Pipe Rotated <input type="checkbox"/>		Pipe Reciprocated <input type="checkbox"/>				Shoe Depth 3949.0 ft		Tool Type	
No. Centralizers		Top Plugs 1		Bottom Plugs		Stage Tool Type		Tool Depth ft	
Cement Head Type Single						Stage Tool Depth ft		Tail Pipe Size in	
Job Scheduled For Jan/29/2012		Arrived on Location Jan/29/2012		Leave Location Jan/29/2012		Collar Type Float		Tail Pipe Depth ft	
						Collar Depth 3906.0 ft		Sqz. Total Vol. bbl	
Date	Time 24-hr clock	Treating Pressure PSI	Flow Rate B/M	Density LB/G	Volume BBL	Solid Fraction NULL	Message		
01/29/2012	07:50:13	-2	0.0	8.41	28.8	0	Started Acquisition		
01/29/2012	07:50:14	-2	0.0	8.41	28.8	0	Held Safety Meeting		
01/29/2012	07:50:15	-2	0.0	8.41	28.8	0	Flow 2 bbls Ahead		
01/29/2012	07:51:53	-2	0.0	8.41	28.8	0			
01/29/2012	07:53:33	7	1.5	8.42	0.2	0			
01/29/2012	07:55:13	72	0.4	8.39	1.2	0			
01/29/2012	07:56:53	35	0.0	8.39	2.5	0			
01/29/2012	07:58:33	4046	0.0	8.39	2.5	0			
01/29/2012	07:59:00	4012	0.0	8.39	2.5	0	Pressure Test Lines		
01/29/2012	08:00:13	19	0.0	8.39	2.5	0			
01/29/2012	08:00:40	163	2.3	8.39	2.8	0	Start Pumping Water		
01/29/2012	08:00:41	152	2.3	8.39	2.9	0	40 bbls Water Ahead		
01/29/2012	08:01:53	165	3.5	8.39	6.4	0			
01/29/2012	08:03:33	227	5.0	8.39	14.1	0			
01/29/2012	08:05:13	258	4.9	8.39	22.3	0			
01/29/2012	08:06:00	246	5.1	13.28	26.2	47	Reset Total, Vol = 26.28 bbl		
01/29/2012	08:06:48	458	6.5	12.97	30.4	43	Start Mixing Lead Slurry		
01/29/2012	08:06:49	471	6.5	12.97	30.5	43	263 bbls Lead Slurry		
01/29/2012	08:06:53	448	6.5	12.97	31.0	43			
01/29/2012	08:08:33	554	8.0	12.93	42.9	40			
01/29/2012	08:10:13	496	8.0	12.84	56.2	38			

Well RGU 442-25-198			Field Ryan Gulch Unit		Job Start Jan/29/2012		Customer WPX Energy	Job Number BTX1-00066
Date	Time 24-hr clock	Treating Pressure PSI	Flow Rate B/M	Density LB/G	Volume BBL	Solid Fraction NULL	Message	
01/29/2012	08:13:33	455	8.0	12.88	82.8	37		
01/29/2012	08:14:11	460	8.0	12.85	87.9	36	Took Dry Sample (007818)	
01/29/2012	08:15:13	464	8.0	12.85	96.2	36		
01/29/2012	08:15:53	465	8.0	12.84	101.5	36	Took Wet Sample	
01/29/2012	08:15:54	485	8.0	12.84	101.6	36	Mud Scale = 12.9 ppg	
01/29/2012	08:16:53	468	8.0	12.84	109.5	36		
01/29/2012	08:18:33	498	8.0	12.79	122.8	36		
01/29/2012	08:20:13	466	8.0	12.79	136.1	36		
01/29/2012	08:21:53	495	8.0	12.80	149.4	36		
01/29/2012	08:23:33	500	8.0	12.79	162.7	36		
01/29/2012	08:25:13	473	8.0	12.79	176.1	36		
01/29/2012	08:26:53	503	8.0	12.81	189.4	36		
01/29/2012	08:28:33	493	8.0	12.82	202.7	36		
01/29/2012	08:29:57	479	8.0	12.81	213.9	36	Took Water Samples (007942, 008017)	
01/29/2012	08:30:13	507	8.0	12.81	216.0	36		
01/29/2012	08:31:53	507	8.0	12.81	229.3	36		
01/29/2012	08:32:41	505	8.0	12.81	235.7	36	Good Returns	
01/29/2012	08:33:33	486	8.0	12.68	242.6	35		
01/29/2012	08:35:07	488	7.2	12.70	253.1	32	Took Dry Sample (007809)	
01/29/2012	08:35:13	461	7.9	12.71	253.8	33		
01/29/2012	08:36:53	488	8.0	12.81	267.1	35		
01/29/2012	08:38:33	498	8.0	12.83	280.4	35		
01/29/2012	08:40:13	502	8.0	12.78	293.8	0		
01/29/2012	08:41:09	474	8.0	12.76	301.2	0	End Lead Slurry	
01/29/2012	08:41:10	183	7.5	12.76	301.3	0	Reset Total, Vol = 275.19 bbl	
01/29/2012	08:41:16	15	2.7	12.88	301.9	0	Drop Top Plug	
01/29/2012	08:41:17	15	1.6	12.89	302.0	3	Start Displacement	
01/29/2012	08:41:53	-1	0.0	12.85	302.1	0		
01/29/2012	08:43:33	12	0.0	12.77	302.1	0		
01/29/2012	08:45:13	2	0.0	12.78	302.1	0		
01/29/2012	08:46:06	108	3.0	9.19	303.2	6	302 bbls Displacement	
01/29/2012	08:46:53	136	5.0	8.91	306.4	6		
01/29/2012	08:48:33	138	5.0	8.55	314.8	3		
01/29/2012	08:50:13	125	5.0	8.46	323.2	6		
01/29/2012	08:51:53	188	6.4	8.43	333.3	6		
01/29/2012	08:53:33	195	6.4	8.41	344.0	4		
01/29/2012	08:55:13	197	6.4	8.41	354.6	4		
01/29/2012	08:56:53	193	6.4	8.39	365.3	5		
01/29/2012	08:58:33	203	6.4	8.41	376.0	5		
01/29/2012	09:00:13	185	6.3	8.42	386.7	7		
01/29/2012	09:01:53	207	6.4	8.42	397.3	5		
01/29/2012	09:03:33	190	6.4	8.42	407.9	0		
01/29/2012	09:05:13	185	6.4	8.43	418.5	0		
01/29/2012	09:06:53	187	6.4	8.39	429.1	0		
01/29/2012	09:08:33	211	6.4	8.38	439.7	0		
01/29/2012	09:10:13	60	2.1	8.38	444.5	0		
01/29/2012	09:11:53	73	2.1	8.37	447.9	0		
01/29/2012	09:13:33	85	2.0	8.38	451.4	0		
01/29/2012	09:15:13	131	2.0	8.37	454.7	0		
01/29/2012	09:16:53	354	6.3	8.37	462.2	0		
01/29/2012	09:17:34	380	6.3	8.37	466.5	0	Good Returns	
01/29/2012	09:18:33	375	6.3	8.37	472.8	0		
01/29/2012	09:20:13	426	6.4	8.37	483.3	0		
01/29/2012	09:21:53	493	6.3	8.37	493.9	0		

Well RGU 442-25-198			Field Ryan Gulch Unit		Job Start Jan/29/2012		Customer WPX Energy	Job Number BTX1-00066
Date	Time 24-hr clock	Treating Pressure PSI	Flow Rate B/M	Density LB/G	Volume BBL	Solid Fraction NULL	Message	
01/29/2012	09:25:13	586	6.3	8.37	514.9	0		
01/29/2012	09:26:53	624	6.3	8.37	525.5	0		
01/29/2012	09:28:33	692	6.3	8.37	536.0	0		
01/29/2012	09:30:13	720	6.3	8.37	546.5	0		
01/29/2012	09:31:53	788	6.3	8.37	557.0	0		
01/29/2012	09:33:33	831	6.3	8.37	567.5	0		
01/29/2012	09:35:13	872	6.3	8.37	578.0	0		
01/29/2012	09:36:53	912	6.3	8.37	588.5	0		
01/29/2012	09:38:33	952	6.3	8.37	599.0	0		
01/29/2012	09:40:13	869	3.4	8.37	607.2	0		
01/29/2012	09:41:53	923	3.4	8.37	612.9	0		
01/29/2012	09:43:33	856	2.5	8.37	617.5	0		
01/29/2012	09:44:55	1306	0.6	8.37	620.8	0	Bump Top Plug	
01/29/2012	09:44:56	1306	0.3	8.37	620.8	0	End Displacement	
01/29/2012	09:45:13	1307	0.0	8.37	620.8	0		
01/29/2012	09:45:22	1310	0.0	8.37	620.8	0	Final Circulating Pressure = 800 psi	
01/29/2012	09:46:53	1309	0.0	8.37	620.8	0		
01/29/2012	09:48:06	-8	0.0	8.38	620.8	0	Floats Held	
01/29/2012	09:48:33	-8	0.0	8.38	620.8	0		
01/29/2012	09:50:13	2	0.0	8.38	620.8	0		
01/29/2012	09:50:48	2	0.0	8.38	620.8	0	Dropped Opening Bomb	
01/29/2012	09:51:53	2	0.0	8.38	620.8	0		
01/29/2012	09:53:33	3	0.0	8.38	620.8	0		
01/29/2012	09:55:13	3	0.0	8.38	620.8	0		
01/29/2012	09:56:53	4	0.0	8.38	620.8	0		
01/29/2012	09:58:33	4	0.0	8.38	620.8	0		
01/29/2012	10:00:13	4	0.0	8.38	620.8	0		
01/29/2012	10:01:53	4	0.0	8.38	620.8	0		
01/29/2012	10:02:12	5	0.0	8.39	620.8	0	Reset Total, Vol = 319.36 bbl	
01/29/2012	10:02:37	5	0.0	8.38	620.8	0	10 bbls Water to Open DV Tool	
01/29/2012	10:03:33	230	1.7	8.37	621.6	0		
01/29/2012	10:05:00	340	2.5	8.38	624.1	0	DV Tool Opened	
01/29/2012	10:05:13	347	2.5	8.37	624.6	0		
01/29/2012	10:06:53	330	2.5	8.37	628.7	0		
01/29/2012	10:08:33	201	0.0	8.38	630.9	0		
01/29/2012	12:31:53	-7	0.0	8.43	0.0	0		
01/29/2012	12:33:33	-7	0.0	8.43	0.0	0		
01/29/2012	12:35:13	-7	0.0	8.43	0.0	0		
01/29/2012	12:36:53	-5	0.0	8.43	0.0	0		
01/29/2012	12:37:18	49	2.6	8.43	0.5	0	Start Pumping Water	
01/29/2012	12:37:19	49	2.6	8.43	0.6	0	40 bbls Water	
01/29/2012	12:38:33	86	3.6	8.38	4.1	0		
01/29/2012	12:40:13	308	7.8	8.41	13.9	0		
01/29/2012	12:41:53	326	7.8	8.40	26.8	0		
01/29/2012	12:43:03	325	8.3	9.59	35.9	37	End Water	
01/29/2012	12:43:05	347	8.3	11.27	36.2	37	Reset Total, Vol = 36.30 bbl	
01/29/2012	12:43:15	518	8.0	12.67	37.5	37	Start Mixing Tail Slurry	
01/29/2012	12:43:17	519	8.0	12.67	37.8	37	288 bbls Tail Cement	
01/29/2012	12:43:33	471	8.0	12.72	39.9	38		
01/29/2012	12:44:49	523	8.0	12.80	50.0	38	Good Returns	
01/29/2012	12:45:13	529	8.0	12.80	53.2	38		
01/29/2012	12:46:53	495	8.0	12.87	66.5	37		
01/29/2012	12:48:33	499	8.0	12.87	79.8	37		
01/29/2012	12:50:13	504	8.0	12.91	93.1	36		

Well			Field		Job Start	Customer		Job Number
RGU 442-25-198			Ryan Gulch Unit		Jan/29/2012	WPX Energy		BTX1-00066
Date	Time 24-hr clock	Treating Pressure PSI	Flow Rate B/M	Density LB/G	Volume BBL	Solid Fraction NULL	Message	
01/29/2012	12:53:33	498	8.0	12.88	119.7	37		
01/29/2012	12:55:13	495	8.0	12.86	132.9	36		
01/29/2012	12:56:53	496	8.0	12.86	146.2	36		
01/29/2012	12:58:33	515	8.0	12.84	159.5	36		
01/29/2012	13:00:13	480	8.0	12.79	172.8	35		
01/29/2012	13:00:47	505	8.0	12.82	177.3	35	Took Dry Sample (007841)	
01/29/2012	13:01:53	503	8.0	12.92	186.1	36		
01/29/2012	13:03:33	500	8.0	12.96	199.4	37		
01/29/2012	13:05:13	506	8.0	12.91	212.7	36		
01/29/2012	13:06:53	489	8.0	12.93	226.0	37		
01/29/2012	13:08:33	468	8.0	12.92	239.3	37		
01/29/2012	13:10:13	487	8.0	12.87	252.6	36		
01/29/2012	13:11:53	464	8.0	12.87	265.9	36		
01/29/2012	13:13:33	472	8.0	12.86	279.2	37		
01/29/2012	13:15:13	480	8.0	12.87	292.5	36		
01/29/2012	13:16:53	505	8.0	12.85	305.7	36		
01/29/2012	13:18:33	530	8.0	12.82	319.0	37		
01/29/2012	13:19:39	18	6.6	12.92	327.8	63	End Tail Slurry	
01/29/2012	13:19:41	10	4.6	13.08	328.0	64	Reset Total, Vol = 291.75 bbl	
01/29/2012	13:19:42	10	2.8	13.08	328.0	64	Drop Top Plug	
01/29/2012	13:19:43	14	1.4	13.09	328.1	0	Start Displacement	
01/29/2012	13:20:13	8	0.0	13.07	328.2	0		
01/29/2012	13:21:53	12	0.0	13.01	328.2	0		
01/29/2012	13:22:58	85	2.7	11.35	328.7	13	Drop Plug Through Cap	
01/29/2012	13:22:59	86	2.7	10.94	328.7	13	139 bbls Water Displacement	
01/29/2012	13:23:33	88	3.6	8.62	330.4	13		
01/29/2012	13:25:13	348	7.9	8.63	339.8	6		
01/29/2012	13:26:53	395	7.8	8.53	352.9	4		
01/29/2012	13:28:33	444	7.8	8.43	365.9	3		
01/29/2012	13:30:13	412	7.8	8.25	378.9	7		
01/29/2012	13:31:53	506	7.8	8.40	391.9	7		
01/29/2012	13:33:33	558	7.8	8.42	404.9	6		
01/29/2012	13:33:34	558	7.8	8.42	405.0	6	Good Cement to Surface	
01/29/2012	13:33:45	548	7.8	8.39	406.4	6	70 bbls Cement to Surface	
01/29/2012	13:35:13	601	7.9	8.33	417.9	5		
01/29/2012	13:36:53	624	7.7	8.44	430.8	15		
01/29/2012	13:38:33	663	7.7	8.44	443.7	0		
01/29/2012	13:40:13	702	7.7	8.44	456.5	0		
01/29/2012	13:41:53	517	3.9	8.44	464.3	0		
01/29/2012	13:43:33	482	2.5	8.44	470.6	0		
01/29/2012	13:45:13	487	2.5	8.44	474.7	0		
01/29/2012	13:46:53	1449	0.0	8.44	476.6	0		
01/29/2012	13:47:46	1408	0.0	8.44	476.6	0	Bump Top Plug	
01/29/2012	13:47:47	1389	0.0	8.44	476.6	0	End Displacement	
01/29/2012	13:47:49	1370	0.0	8.44	476.6	0	Final Circulating Pressure = 500 psi	
01/29/2012	13:48:33	-2	0.0	8.44	476.6	0		

Well RGU 442-25-198	Field Ryan Gulch Unit	Job Start Jan/29/2012	Customer WPX Energy	Job Number BTX1-00066
-------------------------------	---------------------------------	---------------------------------	-------------------------------	---------------------------------

Post Job Summary

Average Pump Rates, bbl/min					Volume of Fluid Injected, bbl						
Slurry 6.3	N2		Mud	Maximum Rate 8.3	Total Slurry 551.0	Mud 0.0		Spacer 80.0	N2		
Treating Pressure Summary, psi					Breakdown Fluid						
Maximum 4233	Final -2	Average 435	Bump Plug to 1300	Breakdown	Type		Volume bbl		Density lb/gal		
Avg. N2 Percent %		Designed Slurry Volume 551.0 bbl		Displacement 441.0 bbl		Mix Water Temp 75 degF		Cement Circulated to Surface?	<input type="checkbox"/>	Volume bbl	
								Washed Thru Perfs		<input type="checkbox"/>	To ft
Customer or Authorized Representative Joe Honeycutt				Schlumberger Supervisor Ryan Bowditch				Circulation Lost	<input type="checkbox"/>	Job Completed	<input type="checkbox"/>
								-		-	