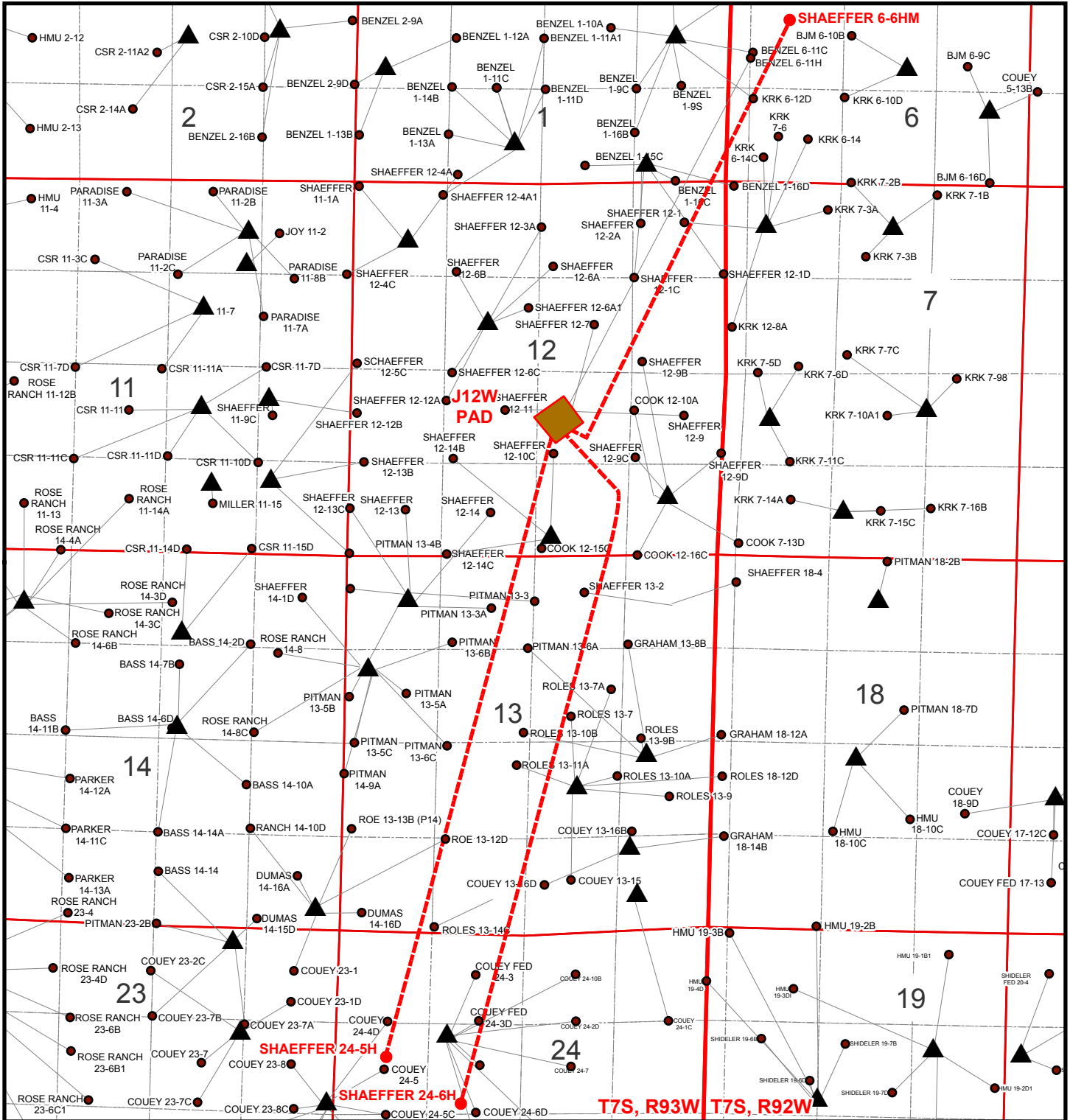


Multi-Well Plan
Encana Oil & Gas (USA) Inc.
J12W Well Pad
Section 12, T7S, R93W, 6th P.M.



NOTE: WELL INFORMATION BASED ON THE COGCC GIS DEPARTMENT DATA.



906 Main Street
Evanston, Wyoming 82930
Phone No. (307) 789-4545

<i>Multi-Well Plan</i>		<i>Scale: 1 in = 2,000 ft</i>	<i>SHEET 1 OF 10</i>
Project No. <i>11-04-66</i>	Date Surveyed:		
Date Drawn: <i>3/14/12</i>	Latest Revision Date: <i>8/15/12</i>		

EnCana Oil & Gas (USA) Inc.
J12W Well Pad
Section 12, T7S, R93W, 6th P.M.
WELL PAD INTERFERENCE PLAT



SHAEFFER 6-6HM

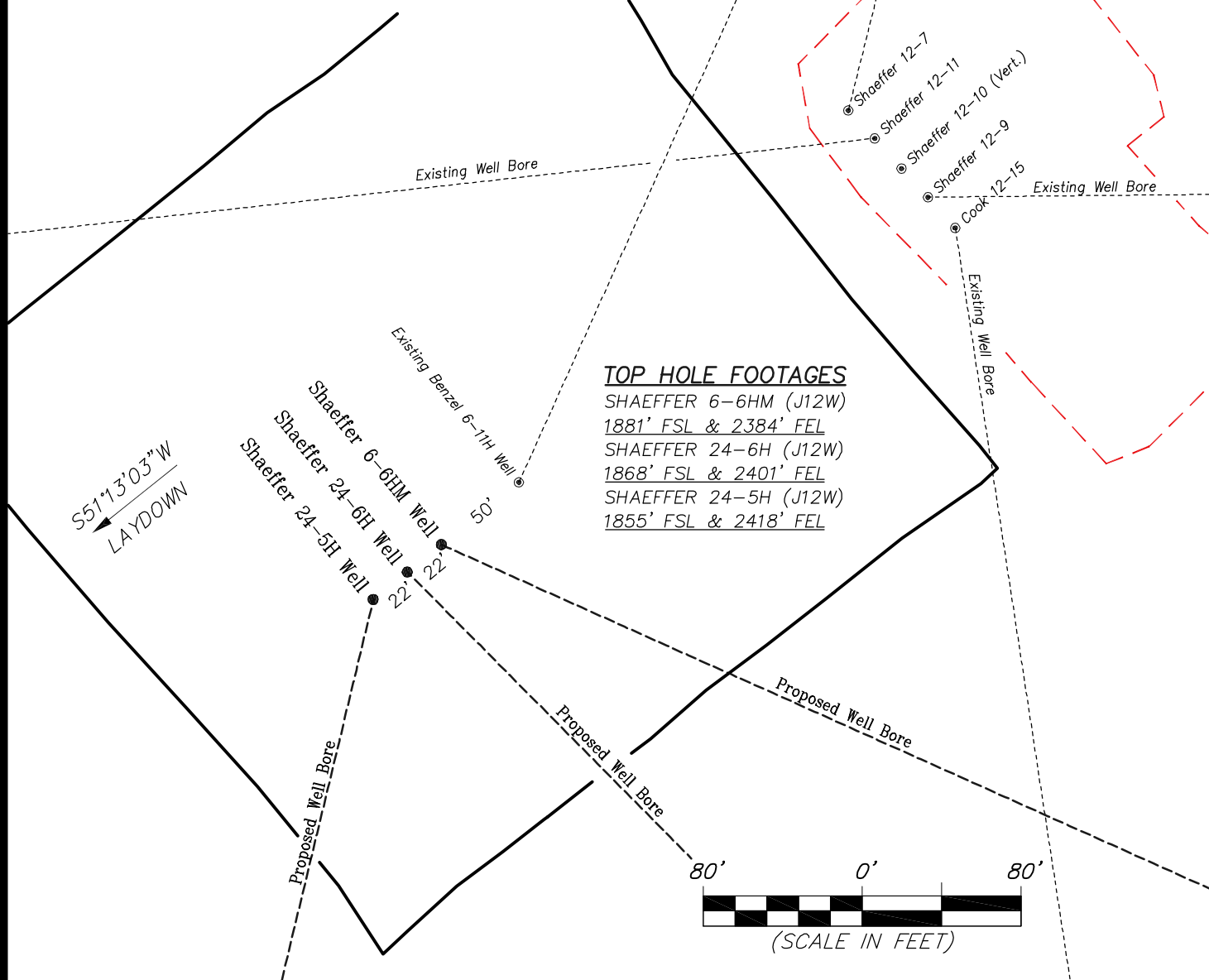
NAD 83 (SURFACE LOCATION)	NAD 83 (BOTTOM HOLE)
LATITUDE = 39.458349°	LATITUDE = 39.474187°
LONGITUDE = 107.722735°	LONGITUDE = 107.711738°

SHAEFFER 24-6H

NAD 83 (SURFACE LOCATION)	NAD 83 (BOTTOM HOLE)
LATITUDE = 39.458312°	LATITUDE = 39.431824°
LONGITUDE = 107.722796°	LONGITUDE = 107.726551°

SHAEFFER 24-5H

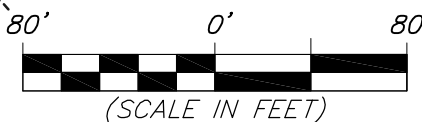
NAD 83 (SURFACE LOCATION)	NAD 83 (BOTTOM HOLE)
LATITUDE = 39.458274°	LATITUDE = 39.433604°
LONGITUDE = 107.722856°	LONGITUDE = 107.730365°



TOP HOLE FOOTAGES

SHAEFFER 6-6HM (J12W)
 1881' FSL & 2384' FEL
 SHAEFFER 24-6H (J12W)
 1868' FSL & 2401' FEL
 SHAEFFER 24-5H (J12W)
 1855' FSL & 2418' FEL

S51°13'03"W
 LAYDOWN



906 Main Street
 Evanston, Wyoming 82930
 Phone No. (307) 789-4545

Interference Plat		Scale: 1" = 80'	SHEET 2 OF 10
Project No.	10-04-66	Date Surveyed: 3/12/12	
Date Drawn:	3/12/12	Latest Revision Date: 8/15/12	