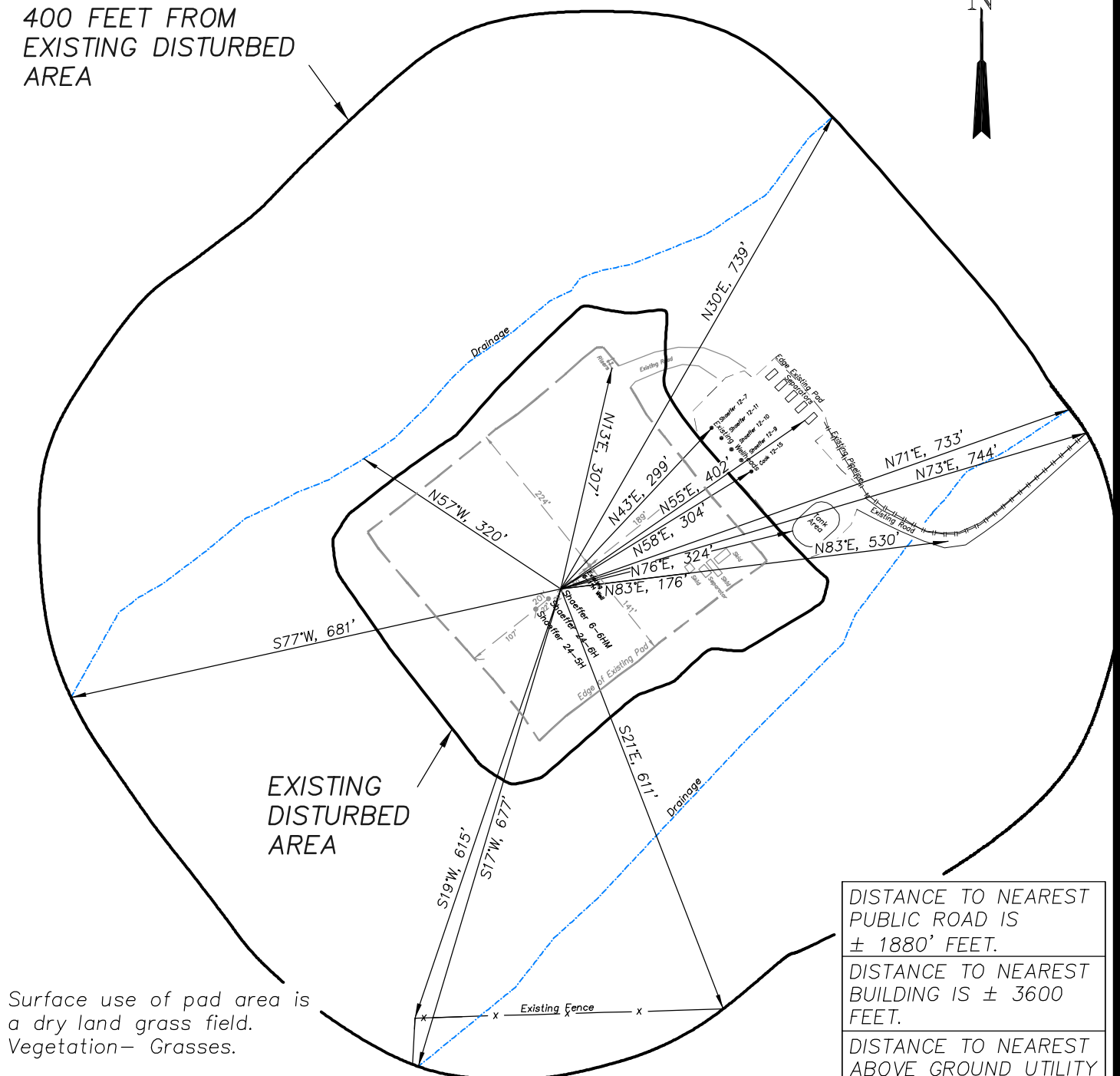


EnCana Oil & Gas (USA) Inc.
ADDENDUM TO LEGAL PLATS FOR
J12W Well Pad
SECTION 12, T7S, R93W, 6th P.M.

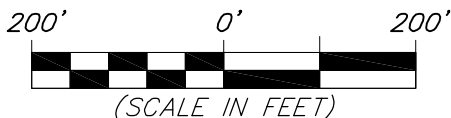


400 FEET FROM
EXISTING DISTURBED
AREA



EXISTING
DISTURBED
AREA

Surface use of pad area is
a dry land grass field.
Vegetation— Grasses.



DISTANCE TO NEAREST
PUBLIC ROAD IS
± 1880' FEET.
DISTANCE TO NEAREST
BUILDING IS ± 3600
FEET.
DISTANCE TO NEAREST
ABOVE GROUND UTILITY
IS ± 3330' FEET.
DISTANCE TO NEAREST
RAILROAD IS ± 26,000'.



906 Main Street
Evanston, Wyoming 82930
Phone No. (307) 789-4545

Survey Addendum		Scale: 1" = 200'	SHEET 1d OF 10
Project No.	10-04-66	Date Surveyed: 3/12/12	
Date	3/12/12	Latest Revision Date: 8/15/12	
Drawn:	3/12/12		