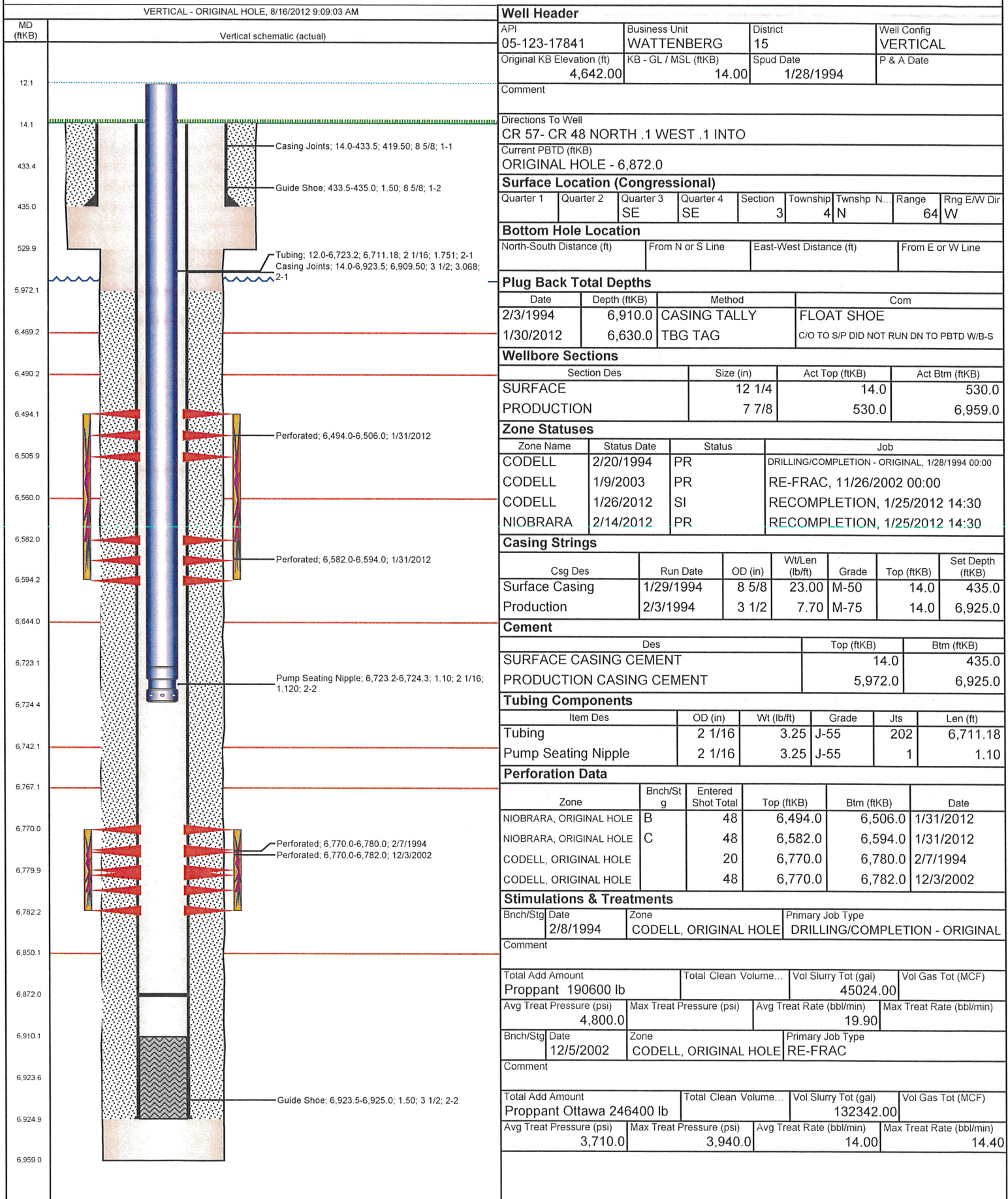
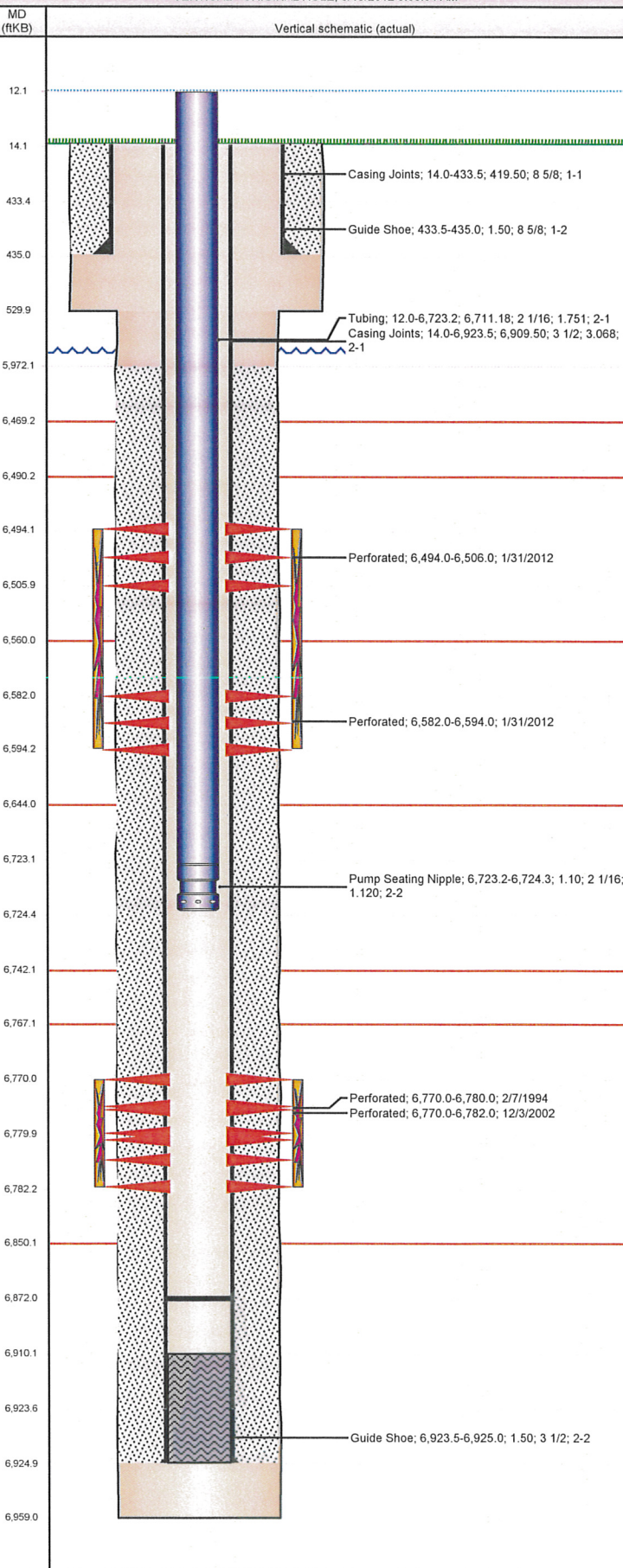


Well Name: OSTER 03-1614



Well Name: OSTER 03-1614

VERTICAL - ORIGINAL HOLE, 8/16/2012 9:09:04 AM



Stimulations & Treatments

Bnch/Stg	Date	Zone	Primary Job Type
	2/11/2012	NIOBRARA, ORIGINAL HOLE	RECOMPLETION
Comment (NIOBRARA)OPEN 0 PSI, 44 BL TO LOAD, BREAK 3513 @ 4.1, ISIP 3075, 5 MIN 2820, WAIT FOR FR PUMP TO BE REPAIRED AFTER 5 MIN.ISIP 3502, 5 MIN 3284, TREATMENT WENT WELL			
Total Add Amount Proppant Ottawa 251052.297 lb	Total Clean Volume...	Vol Slurry Tot (gal)	Vol Gas Tot (MCF)
	155072.40	166478.77	
Avg Treat Pressure (psi)	Max Treat Pressure (psi)	Avg Treat Rate (bbl/min)	Max Treat Rate (bbl/min)
5,305.0	5,827.0	39.65	43.34

Other In Hole

Run Date	Des	OD (in)	Top (ftKB)	Btm (ftKB)

Logs

Date	Type	Top (ftKB)	Btm (ftKB)
2/3/1994	DUAL INDUCTION	3,500.0	6,957.0
2/7/1994	PFC	6,300.0	6,843.0
3/22/2011	GYRO	10.0	6,700.0
1/31/2012	CBL/CCL/GR	6,100.0	6,629.0