

**HALLIBURTON**

---

# **WPX ENERGY ROCKY MOUNTAIN LLC-EBUS**

---

**KP 323-8  
KOKOPELLI  
Garfield County , Colorado**

## **Cement Surface Casing**

**04-Mar-2012**

### **Post Job Summary**

## The Road to Excellence Starts with Safety

Sold To #: 300721	Ship To #: 2910580	Quote #:	Sales Order #: 9303605
Customer: WPX ENERGY ROCKY MOUNTAIN LLC-EBUS	Customer Rep: Valad, Gary		
Well Name: KP	Well #: 323-8	API/UWI #: 05-045-20991	
Field: KOKOPELLI	City (SAP): SILT	County/Parish: Garfield	State: Colorado
Lat: N 39.536 deg. OR N 39 deg. 32 min. 7.93 secs.	Long: W 107.58 deg. OR W -108 deg. 25 min. 12.749 secs.		
Contractor: NABORS	Rig/Platform Name/Num: NABORS 574		
Job Purpose: Cement Surface Casing			
Well Type: Development Well	Job Type: Cement Surface Casing		
Sales Person: MAYO, MARK	Srv Supervisor: PONDER, THOMAS	MBU ID Emp #: 427112	

### Job Personnel

HES Emp Name	Exp Hrs	Emp #	HES Emp Name	Exp Hrs	Emp #	HES Emp Name	Exp Hrs	Emp #
BORSZICH, STEPHEN A	6	412388	HARDRICK, RAYMOND Frank	6	391324	PONDER, THOMAS Lynn	6	427112
WADE, LOGAN D	6	488896						

### Equipment

HES Unit #	Distance-1 way	HES Unit #	Distance-1 way	HES Unit #	Distance-1 way	HES Unit #	Distance-1 way
10001431	60 mile	10744648C	60 mile	10784080	60 mile	10804579	60 mile
10969711	60 mile	11259882	60 mile	11808845	60 mile		

### Job Hours

Date	On Location Hours	Operating Hours	Date	On Location Hours	Operating Hours	Date	On Location Hours	Operating Hours
03/03/2012	1	0	03/04/2012	5.5	2			

**TOTAL** Total is the sum of each column separately

### Job

Formation Name	Formation Depth (MD)	Top	Bottom	Form Type	Job depth MD	Job Depth TVD	Water Depth	Perforation Depth (MD)	From	To
				BHST	1444. ft	1444. ft				
							Wk Ht Above Floor			6. ft

### Job Times

Date	Time	Time Zone
03 - Mar - 2012	18:30	MST
03 - Mar - 2012	23:00	MST
04 - Mar - 2012	02:24	MST
04 - Mar - 2012	03:36	MST
04 - Mar - 2012	05:30	MST

### Well Data

Description	New / Used	Max pressure psig	Size in	ID in	Weight lbm/ft	Thread	Grade	Top MD ft	Bottom MD ft	Top TVD ft	Bottom TVD ft
OPEN HOLE				13.5				.	1460.		
SURFACE CASING	Unknown		9.625	9.001	32.3		H-40	.	1444.		

### Sales/Rental/3<sup>rd</sup> Party (HES)

Description	Qty	Qty uom	Depth	Supplier
PLUG,CMTG,TOP,9 5/8,HWE,8.16 MIN/9.06 MA	1	EA		

### Tools and Accessories

Type	Size	Qty	Make	Depth	Type	Size	Qty	Make	Depth	Type	Size	Qty	Make
Guide Shoe					Packer					Top Plug	9 5/8	1	HES
Float Shoe					Bridge Plug					Bottom Plug			
Float Collar					Retainer					SSR plug set			
Insert Float										Plug Container	9 5/8	1	HES
Stage Tool										Centralizers			

### Miscellaneous Materials

Gelling Agt	Conc	Surfactant	Conc	Acid Type	Qty	Conc	%
Treatment Fld	Conc	Inhibitor	Conc	Sand Type	Size	Qty	

### Fluid Data

Stage/Plug #: 1

Fluid #	Stage Type	Fluid Name	Qty	Qty uom	Mixing Density lbm/gal	Yield ft <sup>3</sup> /sk	Mix Fluid Gal/sk	Rate bbl/min	Total Mix Fluid Gal/sk
1	Fresh Water		20.00	bbl	8.33	.0	.0	6.0	
2	VersaCem Lead	VERSACEM (TM) SYSTEM (452010)	230.0	sacks	12.3	2.38	13.75	8.0	13.75
	13.75 Gal	FRESH WATER							
3	VersaCem Tail	VERSACEM (TM) SYSTEM (452010)	160.0	sacks	12.8	2.11	11.75	8.0	11.75
	11.75 Gal	FRESH WATER							
4	Displacement Fluid		110.00	bbl	8.34	.0	.0	10.0	
<b>Calculated Values</b>		<b>Pressures</b>		<b>Volumes</b>					
Displacement	110.2	Shut In: Instant		Lost Returns		Cement Slurry	157.6	Pad	
Top Of Cement	SURFACE	5 Min		Cement Returns	28	Actual Displacement	110.2	Treatment	
Frac Gradient		15 Min		Spacers	20	Load and Breakdown		Total Job	287.8
<b>Rates</b>									
Circulating	RIG	Mixing	7	Displacement	8	Avg. Job	7		
Cement Left In Pipe	Amount	44.1 ft	Reason	Shoe Joint					
Frac Ring # 1 @	ID	Frac ring # 2 @	ID	Frac Ring # 3 @	ID	Frac Ring # 4 @	ID		
The Information Stated Herein Is Correct				Customer Representative Signature					



*The Road to Excellence Starts with Safety*

Sold To #: 300721	Ship To #: 2910580	Quote #:	Sales Order #: 9303605
Customer: WPX ENERGY ROCKY MOUNTAIN LLC-EBUS	Customer Rep: Valad, Gary		
Well Name: KP	Well #: 323-8	API/UWI #: 05-045-20991	
Field: KOKOPELLI	City (SAP): SILT	County/Parish: Garfield	State: Colorado
Legal Description:			
Lat: N 39.536 deg. OR N 39 deg. 32 min. 7.93 secs.		Long: W 107.58 deg. OR W -108 deg. 25 min. 12.749 secs.	
Contractor: NABORS	Rig/Platform Name/Num: NABORS 574		
Job Purpose: Cement Surface Casing	Ticket Amount:		
Well Type: Development Well	Job Type: Cement Surface Casing		
Sales Person: MAYO, MARK	Srv Supervisor: PONDER, THOMAS	MBU ID Emp #: 427112	

Activity Description	Date/Time	Cht #	Rate bbl/ min	Volume bbl		Pressure psig		Comments
				Stage	Total	Tubing	Casing	
Call Out	03/03/2012 18:30							
Crew Leave Yard	03/03/2012 21:00							ALL HES PRESENT FOR PRE-CONVOY SAFETY HUDDLE
Arrive At Loc	03/03/2012 23:00							RIG WAS STILL RUNNING CASING WHEN CREW ARRIVED ON LOCATION
Assessment Of Location Safety Meeting	03/04/2012 00:45							TD- 1460', TP- 1444', SJ- 44.08', MUD- 9.5 PPG, HOLE- 13 1/2", SURFACE CASING- 9 5/8" 32.3# H-40
Rig-Up Equipment	03/04/2012 01:00							RIG STARTED CIRCULATION ON BOTTOM @ 0100
Safety Meeting	03/04/2012 02:15							ALL HES PRESENT, RIG CREW PRESENT
Start Job	03/04/2012 02:24							
Other	03/04/2012 02:25		2	2			120.0	FILL LINES
Test Lines	03/04/2012 02:28		0.1	0.1			5169. 0	PRESSURE TEST OK
Pump Spacer 1	03/04/2012 02:33		6	20			105.0	FRESH WATER
Activity Description	Date/Time	Cht #	Rate bbl/ min	Volume bbl		Pressure psig		Comments
				Stage	Total	Tubing	Casing	

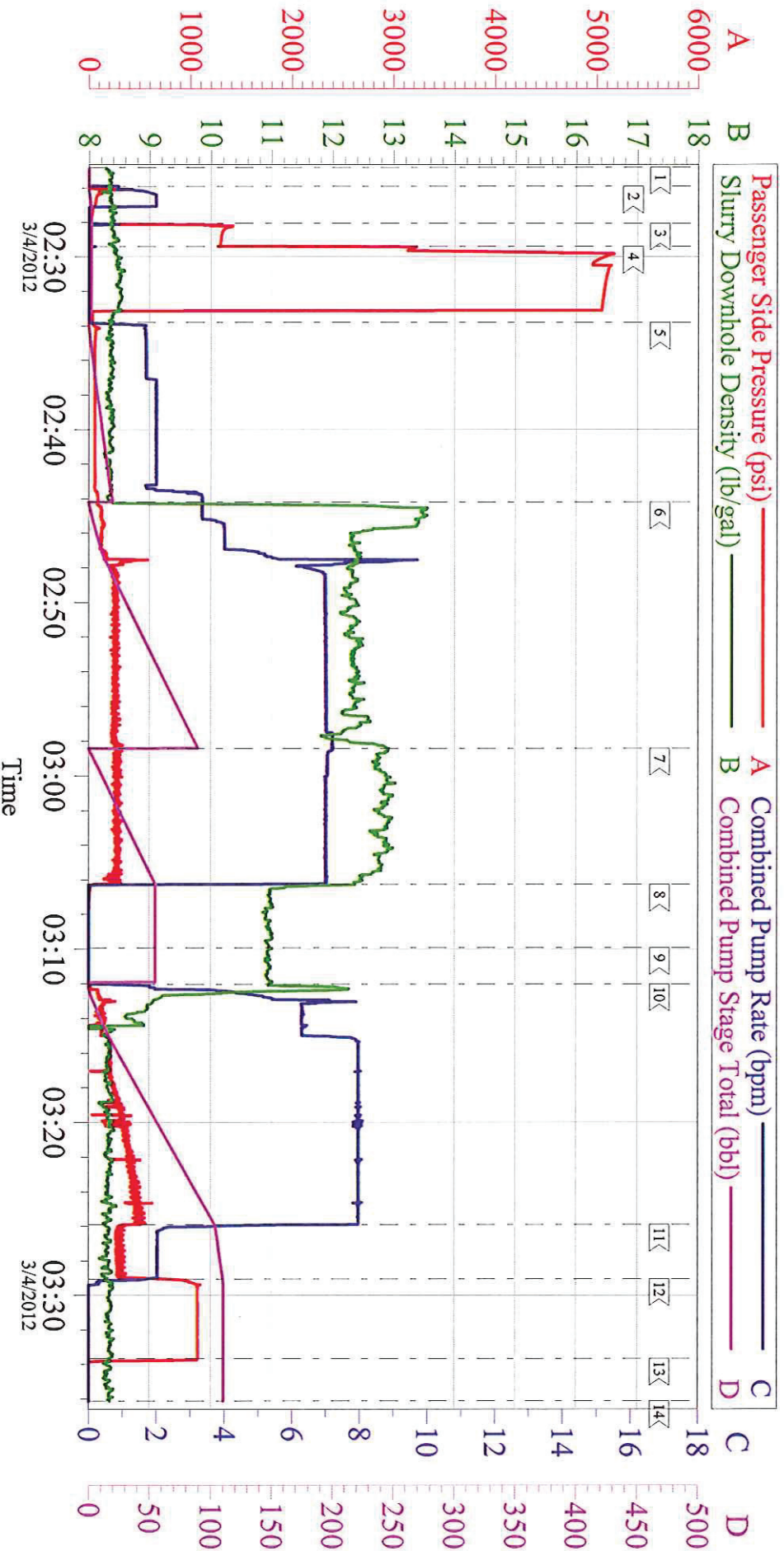
## Cementing Job Log

Pump Lead Cement	03/04/2012 02:44		8	97.5			290.0	230 SKS 12.3 PPG 2.38 FT3/SK 13.75 GAL/SK, WHEN MIXING FIRST TUB OPERATOR DIDN'T REALIZE THAT HE HAD HIS CEMENT VALVE OPEN WHILE WEIGHING THE CEMENT, CAUSED THE DENSITY TO GO UP TP 13.7 PPG WITH NO ROOM IN TUB TO ADD WATER
Pump Tail Cement	03/04/2012 02:58		8	60.1			290.0	160 SKS 12.8 PPG 2.11 FT3/SK 11.75 GAL/SK
Shutdown	03/04/2012 03:06							WASHED UP CEMENT TUB AND VALVE
Drop Plug	03/04/2012 03:09							PLUG DROP VERIFIED VIA TATTLE TELL BY CUSTOMER REP
Pump Displacement	03/04/2012 03:12		10	110.2			629.0	FRESH WATER
Slow Rate	03/04/2012 03:25		2	100.2			300.0	GOOD RETURNS THROUGH OUT THE JOB, CIRCULATED 28 BBL OF CEMENT TO SURFACE
Bump Plug	03/04/2012 03:29		2	110.2			307.0	PLUG BUMPED
Check Floats	03/04/2012 03:33						1074. 0	FLOATS HELD, .5 BBL BACK TO THE DISPLACEMENT TANKS
End Job	03/04/2012 03:36							THANK YOU FOR CHOOSING HALLIBURTON, THOMAS PONDER AND CREW



# WPX KP 323-8

## 9.625 IN SURFACE



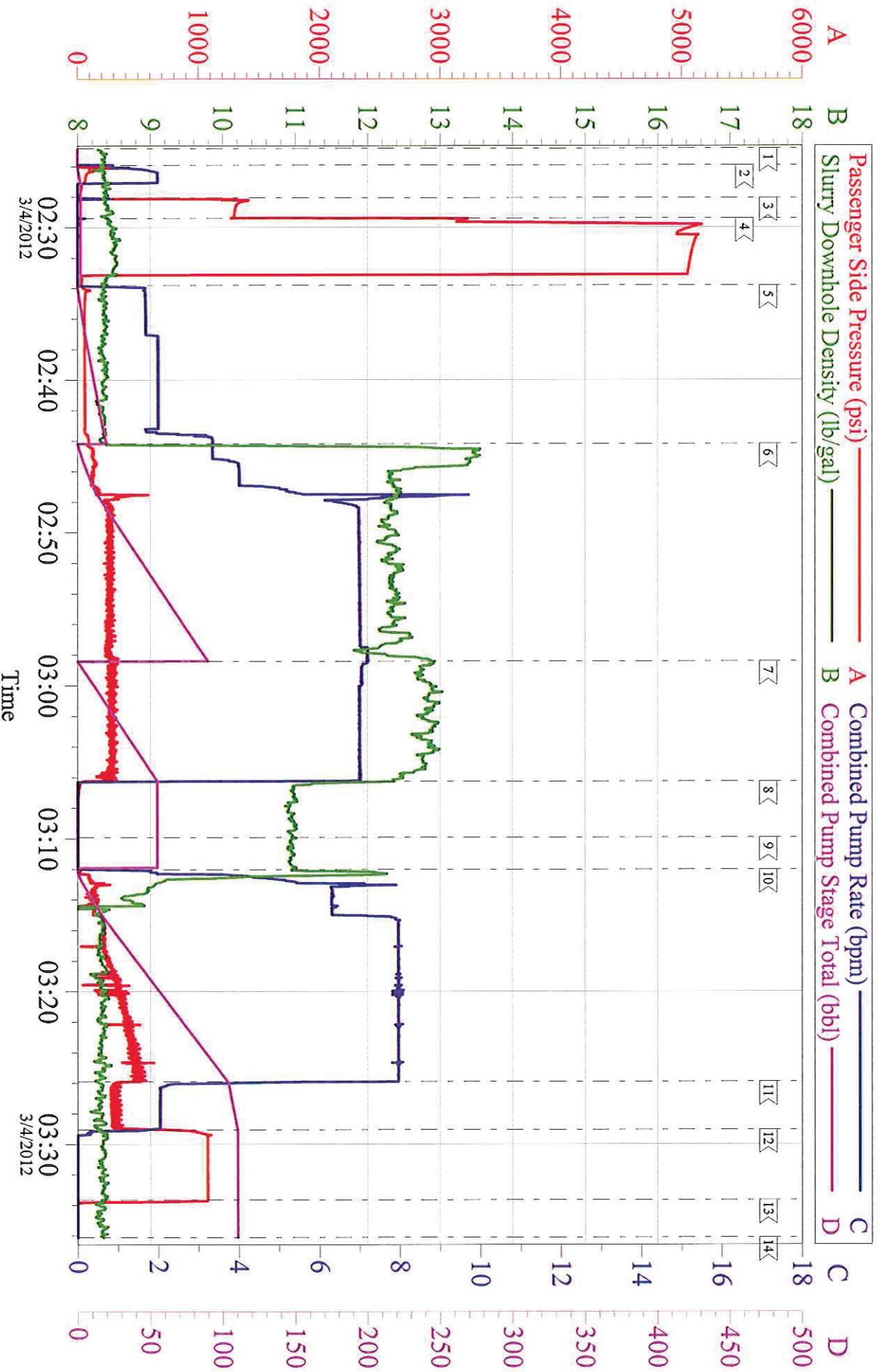
Customer: WPX  
Well Description: KP 323-8  
Company Rep: GARY VLAD

Job Date: 04-Mar-2012  
Job Type: SURFACE  
Cement Supervisor: THOMAS PONDER

Sales Order #: 9303605  
ADC Used: YES  
Elite #/Operator: ELITE #6 / STEPHEN BORSZICH

# WPX KP 323-8

## 9.625 IN SURFACE



Customer:	WPX	Job Date:	04-Mar-2012	Sales Order #:	9303605
Well Description:	KP 323-8	Job Type:	SURFACE	ADC Used:	YES
Company Rep:	GARY VLAD	Cement Supervisor:	THOMAS PONDER	Elite #/Operator:	ELITE #6 / STEPHEN BORSZICH