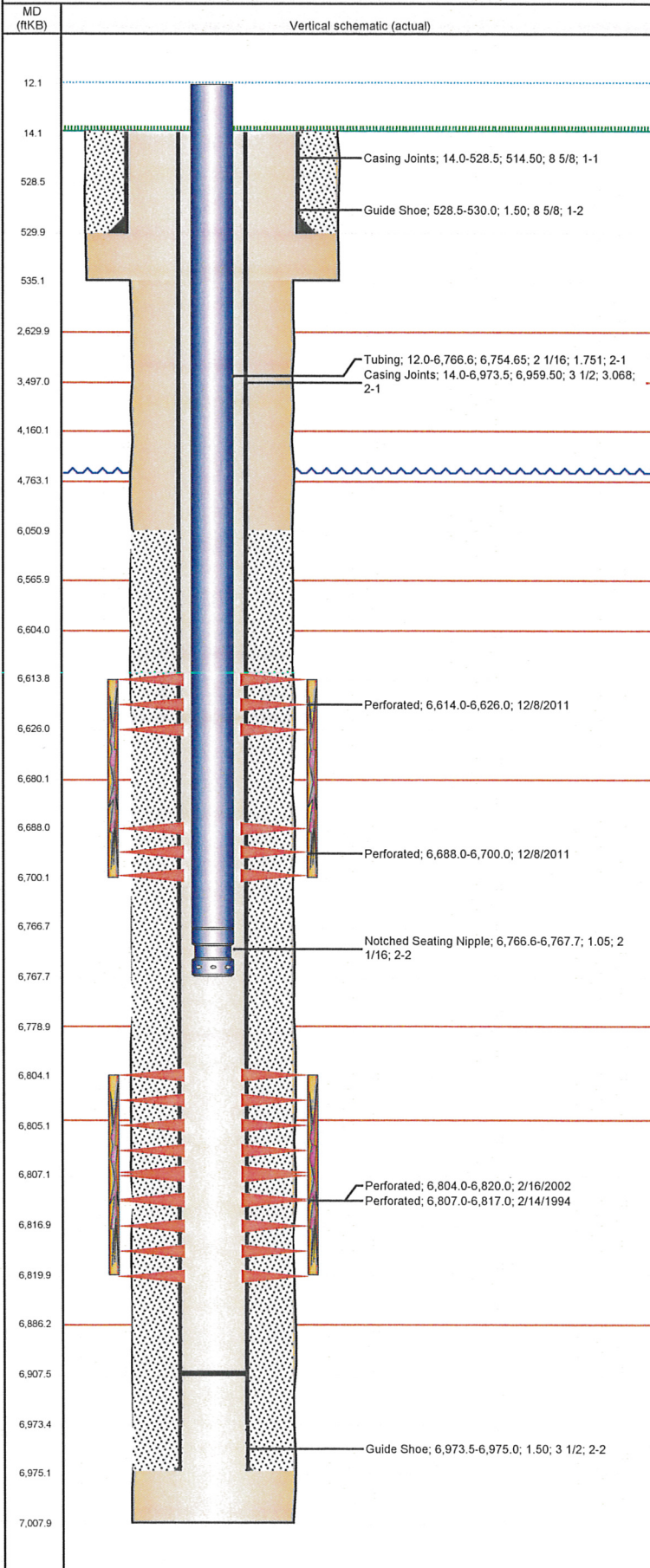


Well Name: OSTER 03-1014

VERTICAL - ORIGINAL HOLE, 8/15/2012 11:55:53 AM



Well Header

API	Business Unit	District	Well Config
05-123-17789	WATTENBERG	15	VERTICAL
Original KB Elevation (ft)	KB - GL / MSL (ftKB)	Spud Date	P & A Date
4,665.00	14.00	1/31/1994	
Comment			

Directions To Well
CR 57 & CR 48 NORTH 5/10 WEST 4/10 MILE SW INTO

Current PBTD (ftKB)
ORIGINAL HOLE - 6,907.4

Surface Location (Congressional)

Quarter 1	Quarter 2	Quarter 3	Quarter 4	Section	Township	Twnshp N...	Range	Rng E/W Dir
		NW	SE	3	4	N	64	W

Bottom Hole Location

North-South Distance (ft)	From N or S Line	East-West Distance (ft)	From E or W Line

Plug Back Total Depths

Date	Depth (ftKB)	Method	Com
9/16/2002	6,920.0	TAG	C/O LAND TBG
12/1/2011	6,927.4	TAG	COULD NOT ACHIEVE ANY MORE HOLE

Wellbore Sections

Section Des	Size (in)	Act Top (ftKB)	Act Btm (ftKB)
SURFACE	12 1/4	14.0	535.0
PRODUCTION	7 7/8	535.0	7,008.0

Zone Statuses

Zone Name	Status Date	Status	Job
CODELL	2/26/1994	PR	DRILLING/COMPLETION - ORIGINAL, 1/31/1994 00:00
CODELL	2/28/2002	PR	RE-FRAC, 2/4/2002 00:00
CODELL	12/17/2011	PR	RECOMPLETION, 11/29/2011 14:00
NIOBRARA	12/17/2011	PR	RECOMPLETION, 11/29/2011 14:00

Casing Strings

Csg Des	Run Date	OD (in)	Wt/Len (lb/ft)	Grade	Top (ftKB)	Set Depth (ftKB)
Surface Casing	2/1/1994	8 5/8	23.00	?	14.0	530.0
Production	2/8/1994	3 1/2	7.70	M-75	14.0	6,975.0

Cement

Des	Top (ftKB)	Btm (ftKB)
SURFACE CASING CEMENT	14.0	530.0
PRODUCTION CASING CEMENT	6,051.0	6,975.0

Tubing Components

Item Des	OD (in)	Wt (lb/ft)	Grade	Jts	Len (ft)
Tubing	2 1/16	3.25	J-55	208	6,754.65
Notched Seating Nipple	2 1/16			1	1.05

Perforation Data

Zone	Bnch/St g	Entered Shot Total	Top (ftKB)	Btm (ftKB)	Date
NIOBRARA, ORIGINAL HOLE		48	6,614.0	6,626.0	12/8/2011
NIOBRARA, ORIGINAL HOLE		48	6,688.0	6,700.0	12/8/2011
CODELL, ORIGINAL HOLE		64	6,804.0	6,820.0	2/16/2002
CODELL, ORIGINAL HOLE		20	6,807.0	6,817.0	2/14/1994

Stimulations & Treatments

Bnch/Stg	Date	Zone	Primary Job Type
	2/16/1994	CODELL, ORIGINAL HOLE	DRILLING/COMPLETION - ORIGINAL
Comment			

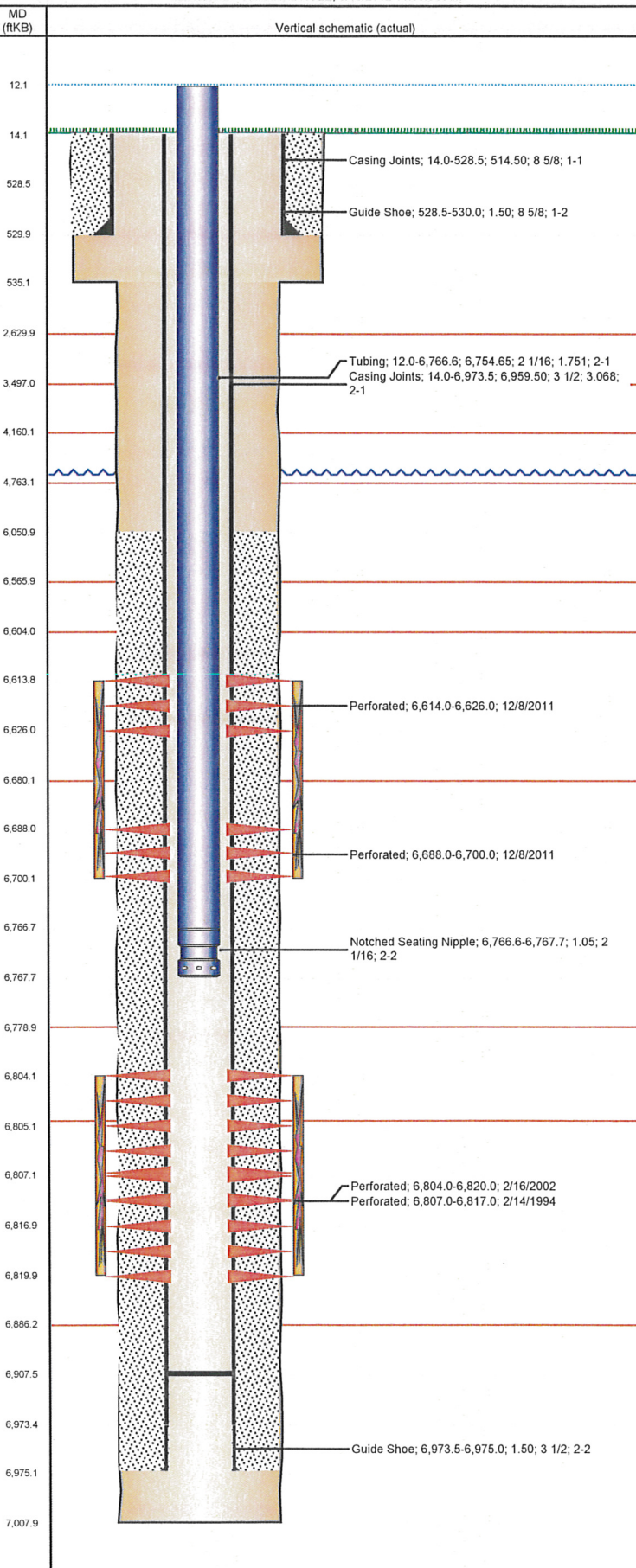
Total Add Amount	Total Clean Volume...	Vol Slurry Tot (gal)	Vol Gas Tot (MCF)
Proppant 187000 lb		45066.00	
Avg Treat Pressure (psi)	Max Treat Pressure (psi)	Avg Treat Rate (bbl/min)	Max Treat Rate (bbl/min)
21.0	21.7	4,800.00	5,200.00

Bnch/Stg	Date	Zone	Primary Job Type
	2/26/2002	CODELL, ORIGINAL HOLE	RE-FRAC
Comment			

Total Add Amount	Total Clean Volume...	Vol Slurry Tot (gal)	Vol Gas Tot (MCF)
Proppant Ottawa 245700 lb		132846.00	
Avg Treat Pressure (psi)	Max Treat Pressure (psi)	Avg Treat Rate (bbl/min)	Max Treat Rate (bbl/min)
11.5	12.2	6,380.00	7,058.00

Well Name: OSTER 03-1014

VERTICAL - ORIGINAL HOLE, 8/15/2012 11:55:54 AM



Stimulations & Treatments

Bnch/Stg	Date	Zone	Primary Job Type
	12/8/2011	CODELL, ORIGINAL HOLE	RECOMPLETION
Comment (CODELL TF): CUT SCREW DURING 4LB STG, TUB WAS TRYING TO SAND OFF, ONCE TUB WAS CLEANED OUT BROUGHT SCREW BACK TO 4LB. HAD TO SHUT DOWN WHILE GOING TO ACID, LOST AIR ON BLENDER AND VALVE WOULD NOT OPEN. AVG VISC=27.4, PH=10.24, TEMP=70.8, PRESSURE=4370, RATE=18.6.			
Total Add Amount	Total Clean Volume...		Vol Slurry Tot (gal)
Proppant Ottawa 245045 lb	132434.40		143522.40
Avg Treat Pressure (psi)	Max Treat Pressure (psi)	Avg Treat Rate (bbl/min)	Max Treat Rate (bbl/min)
4,370.0	4,673.0	18.60	19.30
Bnch/Stg	Date	Zone	Primary Job Type
	12/8/2011	NIOBRARA, ORIGINAL HOLE	RECOMPLETION
Comment (NIOBRARA RC): EXTENDED X-LINK PAD DUE TO LOW VISC. HAD TO FLUSH WELL DURING 2LB, POP-OFF WASHED OUT. RAN A WELLBORE OF X-LINK FLUID AND WALKED DENSITY BACK TO 2LB. PUMPED 2LB OFF OF SAND TOTAL. AVG VISC=18.4, PH=10.1, TEMP=74.9, PRESSURE=5554, RATE=35.7.			
Total Add Amount	Total Clean Volume...		Vol Slurry Tot (gal)
Proppant Ottawa 253398 lb	159075.00		170541.00
Avg Treat Pressure (psi)	Max Treat Pressure (psi)	Avg Treat Rate (bbl/min)	Max Treat Rate (bbl/min)
5,554.0	6,305.0	35.70	43.20

Other In Hole

Run Date	Des	OD (in)	Top (ftKB)	Btm (ftKB)

Logs

Date	Type	Top (ftKB)	Btm (ftKB)
2/9/1994	INDUCTION	545.0	7,006.0
2/14/1994	PFC LOG	6,300.0	6,894.0
12/2/2011	CBL/CCL/GR	5,884.0	6,926.0