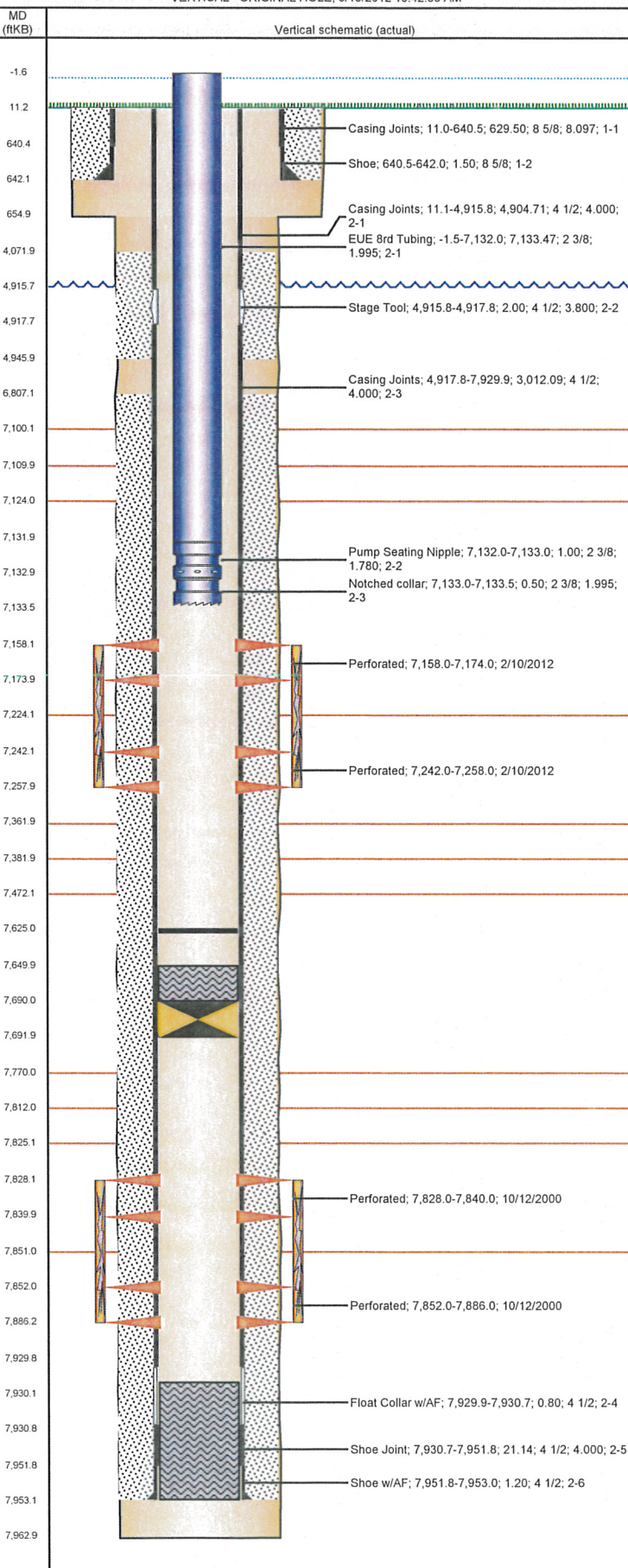


Well Name: HERMAN L32-03JI

VERTICAL - ORIGINAL HOLE, 8/15/2012 10:42:33 AM



Well Header

API 05-123-19945	Business Unit WATTENBERG	District 15	Well Config VERTICAL
Original KB Elevation (ft) 4,913.00	KB - GL / MSL (ftKB) 11.00	Spud Date 9/25/2000	P & A Date

Comment
DV TOOL @ +/- 4916'; LCTN WAS RE-PLATTED AFTER DRILLING, LCTN MVD & NOT REFLECTED ON ORIGINAL LOGS - KB 11'

Directions To Well
WCR 28 & WCR 31, WEST 1.60 MILES, SOUTH AND SOUTHEAST INTO LOCATION (ALONG EASTSIDE OF HOUSE).

Current PBTD (ftKB)
ORIGINAL HOLE - 7,625.0

Surface Location (Congressional)							
Quarter 1	Quarter 2	Quarter 3	Quarter 4	Section	Township	Twnshp N...	Range
		NE	NW	32	3	N	66
							W

Bottom Hole Location			
North-South Distance (ft)	From N or S Line	East-West Distance (ft)	From E or W Line

Plug Back Total Depths			
Date	Depth (ftKB)	Method	Com
10/1/2000	7,930.0	CASING TALLY	FLOAT COLLAR
10/12/2000	7,928.0	CASED HOLE LOG	DEPTH LOGGER ON CBL

Wellbore Sections			
Section Des	Size (in)	Act Top (ftKB)	Act Btm (ftKB)
SURFACE	12 1/4	11.0	655.0
PRODUCTION	7 7/8	655.0	7,963.0

Zone Statuses			
Zone Name	Status Date	Status	Job
J SAND	10/29/2000	PR	DRILLING/COMPLETION - ORIGINAL, 9/25/2000 06:00
J SAND	2/10/2012	SI	RECOMPLETION, 2/7/2012 06:00
NIOBRARA	2/23/2012	PR	RECOMPLETION, 2/7/2012 06:00

Casing Strings						
Csg Des	Run Date	OD (in)	Wt/Len (lb/ft)	Grade	Top (ftKB)	Set Depth (ftKB)
Surface Casing	9/26/2000	8 5/8	24.00	J-55	11.0	642.0
Production	10/1/2000	4 1/2	11.60	I-80	11.1	7,953.0

Cement			
Des	Top (ftKB)	Btm (ftKB)	
Surface Cement	11.0	642.0	
Production Cement	4,072.0	4,946.0	
Production Cement	6,807.0	7,953.0	
DUMP BAIL	7,650.0	7,690.0	

Tubing Components					
Item Des	OD (in)	Wt (lb/ft)	Grade	Jts	Len (ft)
EUE 8rd Tubing	2 3/8	4.70	J-55	231	7,133.47
Pump Seating Nipple	2 3/8	4.70	J-55	1	1.00
Notched collar	2 3/8	4.70	J-55	1	0.50

Perforation Data					
Zone	Bnch/St g	Entered Shot Total	Top (ftKB)	Btm (ftKB)	Date
NIOBRARA, ORIGINAL HOLE		32	7,158.0	7,174.0	2/10/2012
NIOBRARA, ORIGINAL HOLE		32	7,242.0	7,258.0	2/10/2012
J SAND, ORIGINAL HOLE		24	7,828.0	7,840.0	10/12/2000
J SAND, ORIGINAL HOLE		8	7,852.0	7,886.0	10/12/2000

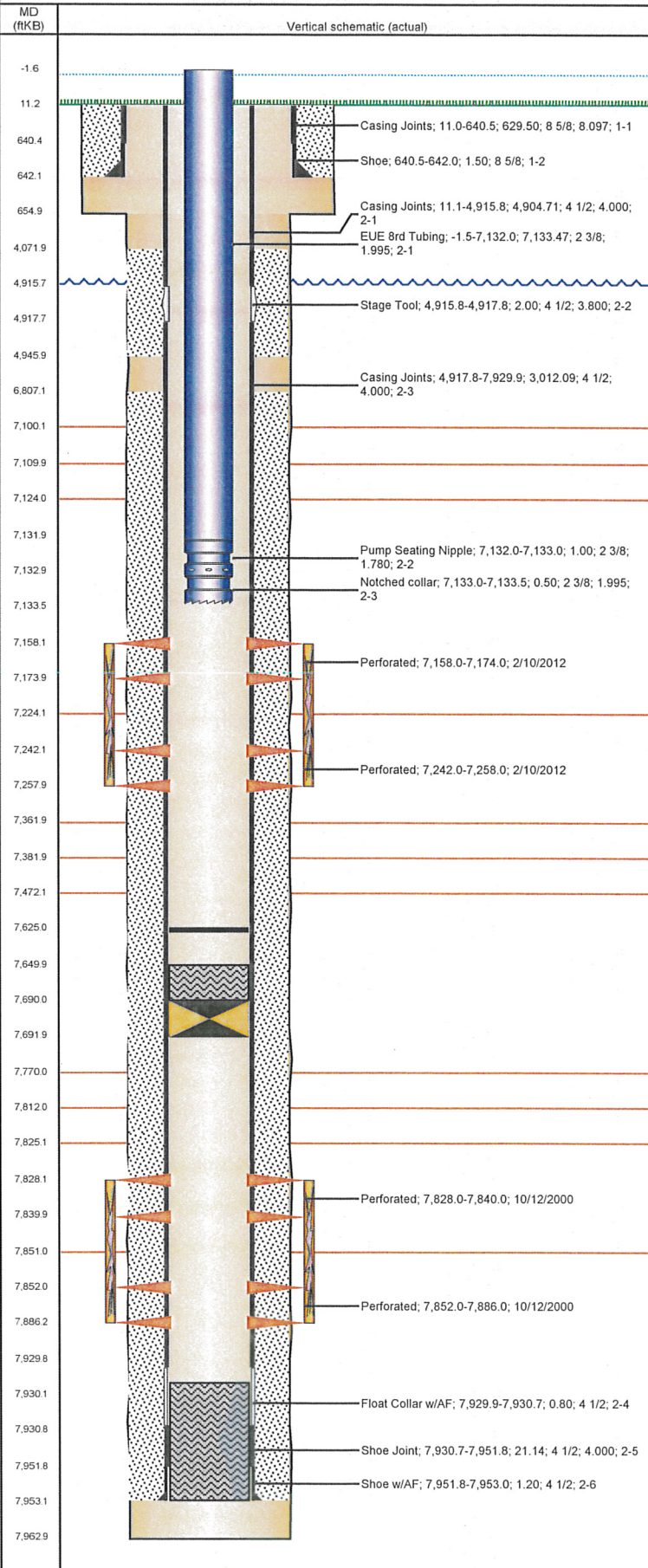
Stimulations & Treatments			
Bnch/Stg	Date	Zone	Primary Job Type
	10/23/2000	J SAND, ORIGINAL HOLE	DRILLING/COMPLETION - ORIGINAL

Comment
MIRU BJ Services to 2 3/8" Tubing and 4 1/2" Casing. The J-Sand was Frac'd via TRIPLE ENTRY from 7,828' - 7,886'. Performed reverse step rate tests. Calculated 11 perms open out of 92. Near Wellbore Friction = 505 psi, Perf Friction = 950 psi, leakoff

Total Add Amount	Total Clean Volume...	Vol Slurry Tot (gal)	Vol Gas Tot (MCF)
Proppant Ottawa 300000 lb		132006.00	
Avg Treat Pressure (psi)	Max Treat Pressure (psi)	Avg Treat Rate (bbl/min)	Max Treat Rate (bbl/min)
3,291.0	5,086.0	22.50	25.00

Well Name: HERMAN L32-03JI

VERTICAL - ORIGINAL HOLE, 8/15/2012 10:42:34 AM



Stimulations & Treatments

Bnch/Stg	Date	Zone	Primary Job Type
	2/14/2012	NIOBRARA, ORIGINAL HOLE	RECOMPLETION
Comment (NIOBRARA)- BREAK 4227 @ 1.9, ISIP 3269, AVER TEMP 59.85, AVER PH 10.33, AVER VISC 17.9. LOADED AND BROKE FORMATION STARTED AND SPOTTED ACID. WITH THE FOLLOWING ISSUES FOUND. CORSSOVER SWITCH ON BLENDER INSTALLED BACKWARD, NOT ALLOWING SAND SCREWS TO OPERATE. LOST A PRESSURE TRANSDUCER. NO COMMUNICATION TO CHEM ADD AND BLENDER. ACID SOAKED FOR APPROX 50 MIN WHILE ISSUES WERE WORKED ON. RESUMED JOB ISSUES NOT RESOLVED WITH COMMUNICATION CONTINUED JOB.			
Total Add Amount		Total Clean Volume...	Vol Slurry Tot (gal)
Proppant Ottawa		157185.84	168374.23
245919.197 lb			
Avg Treat Pressure (psi)		Max Treat Pressure (psi)	Avg Treat Rate (bbl/min)
4,196.0		4,833.0	39.39
			Max Treat Rate (bbl/min)
			46.22

Other In Hole

Run Date	Des	OD (in)	Top (ftKB)	Btm (ftKB)
2/10/2012	Cast Iron Bridge Plug	3.99	7,690.0	7,692.0

Logs

Date	Type	Top (ftKB)	Btm (ftKB)
10/1/2000	COMPENSATED NEUTRON	4,200.0	7,942.0
10/1/2000	FORMATION TESTER	7,700.0	7,841.0
10/1/2000	INDUCTION	646.0	7,942.0
10/1/2000	Microlog	4,200.0	7,942.0
10/12/2000	CBL/CCL/GR	4,000.0	7,922.0