
CHEVRON - MID-CONTINENT EBIZ

**SW McLaughlin 7X
RANGELY
Rio Blanco County , Colorado**

Cement Production Casing
03-Aug-2012

Job Site Documents

The Road to Excellence Starts with Safety

Sold To #: 338668	Ship To #: 2938132	Quote #:	Sales Order #: 9710678
Customer: CHEVRON - MID-CONTINENT EBIZ		Customer Rep: Hejl, Kieth	
Well Name: SW McLaughlin	Well #: 7X	API/UWI #: 05-103-07461	
Field: RANGELY	City (SAP): RANGELY	County/Parish: Rio Blanco	State: Colorado
Legal Description: Section 33 Township 02N Range 102W			
Lat: N 40.099 deg. OR N 40 deg. 5 min. 57.178 secs.		Long: W 108.853 deg. OR W -109 deg. 8 min. 48.354 secs.	
Contractor: WORK OVER		Rig/Platform Name/Num: WORK OVER	
Job Purpose: Cement Production Casing			
Well Type: Producing Well		Job Type: Cement Production Casing	
Sales Person: SPENCER, WESTON	Srv Supervisor: CHASTAIN, DERICK	MBU ID Emp #: 455848	

Job Personnel

HES Emp Name	Exp Hrs	Emp #	HES Emp Name	Exp Hrs	Emp #	HES Emp Name	Exp Hrs	Emp #
CHASTAIN, DERICK Allan	5.5	455848	FUCHS, ALEXANDER Arndt	5.5	479705	GILES, JAMES W	5.5	522124
GRIDER, JAMES Francis	5.5	524217	LINN, PAUL Andrew	5.5	479143			

Equipment

HES Unit #	Distance-1 way	HES Unit #	Distance-1 way	HES Unit #	Distance-1 way	HES Unit #	Distance-1 way
10872429	45 mile	10951249	45 mile	11019277	45 mile	11410664	45 mile
11808847	45 mile	HBL-2000-2	45 mile				

Job Hours

Date	On Location Hours	Operating Hours	Date	On Location Hours	Operating Hours	Date	On Location Hours	Operating Hours
8/3/2012	5.5	2						
TOTAL			Total is the sum of each column separately					

Job

Formation Name	Formation Depth (MD)	Top	Bottom	Form Type	Job depth MD	Job Depth TVD	Water Depth	Perforation Depth (MD)	From	To
				BHST	6064. ft	6064. ft				
							Wk Ht Above Floor			2. ft

Job Times

Date	Time	Time Zone
03 - Aug - 2012	03:30	MST
03 - Aug - 2012	07:30	MST
03 - Aug - 2012	09:37	MST
03 - Aug - 2012	11:29	GMT
03 - Aug - 2012	13:00	MST

Well Data

Description	New / Used	Max pressure psig	Size in	ID in	Weight lbm/ft	Thread	Grade	Top MD ft	Bottom MD ft	Top TVD ft	Bottom TVD ft
5 1/2 Production Scab Liner	Unknown		5.5	4.892	17.	8 RD	L-80	.	6115.		
7 in Production Casing	Unknown		7.	6.366	23.	8 RD	N-80	.	6327.		6327.

Sales/Rental/3rd Party (HES)

Description	Qty	Qty uom	Depth	Supplier
PLUG,CMTG,TOP,5 1/2,HWE,4.38 MIN/5.09 MA	0	EA		

Tools and Accessories

Type	Size	Qty	Make	Depth	Type	Size	Qty	Make	Depth	Type	Size	Qty	Make
Guide Shoe					Packer					Top Plug			
Float Shoe					Bridge Plug					Bottom Plug			
Float Collar					Retainer					SSR plug set			
Insert Float										Plug Container	5.5	1	HES
Stage Tool										Centralizers			

Miscellaneous Materials

Gelling Agt	Conc	Surfactant	Conc	Acid Type	Qty	Conc	%
Treatment Fld	Conc	Inhibitor	Conc	Sand Type	Size		

Fluid Data									
Stage/Plug #: 1									
Fluid #	Stage Type	Fluid Name	Qty	Qty uom	Mixing Density lbm/gal	Yield ft ³ /sk	Mix Fluid Gal/sk	Rate bbl/min	Total Mix Fluid Gal/sk
1	10% CaCl		10.00	bbl	9.04	.0	.0	2	
38.92 lbm/bbl		CALCIUM CHLORIDE, PELLET, 50 LB (101509387)							
2	Fresh Water		5.00	bbl	8.34	.0	.0	2	
3	Double Strength Super Flush		20.00	bbl	10.	.0	.0	2	
21 gal/bbl		INJECTROL A, TOTE TANK (101268122)							
21 gal/bbl		FRESH WATER							
4	Fresh Water		5.00	bbl	8.34	.0	.0	2	
5	BondCem	BONDCEM (TM) SYSTEM (452977)	300.0	sacks	13.5	1.41	6.68	4	6.68
1 lbm		GRANULITE TR 1/4, 50 LB SK (100064073)							
0.125 lbm		POLY-E-FLAKE (101216940)							
0.3 %		HALAD(R)-413, 50 LB (100003738)							
6.68 Gal		FRESH WATER							
6	Displacement		141.00	bbl	8.34			4	
Calculated Values		Pressures		Volumes					
Displacement	140.7	Shut In: Instant		Lost Returns		Cement Slurry	75.3	Pad	
Top Of Cement	SURFACE	5 Min		Cement Returns	2	Actual Displacement	140.7	Treatment	
Frac Gradient		15 Min		Spacers	40	Load and Breakdown		Total Job	258
Rates									
Circulating	2	Mixing	4	Displacement	4	Avg. Job	3		
Cement Left In Pipe	Amount	42.7 ft	Reason	Shoe Joint					
Frac Ring # 1 @	ID	Frac ring # 2 @	ID	Frac Ring # 3 @	ID	Frac Ring # 4 @	ID		
The Information Stated Herein Is Correct				Customer Representative Signature					

The Road to Excellence Starts with Safety

Sold To #: 338668	Ship To #: 2938132	Quote #:	Sales Order #: 9710678
Customer: CHEVRON - MID-CONTINENT EBIZ		Customer Rep: Hejl, Kieth	
Well Name: SW McLaughlin	Well #: 7X	API/UWI #: 05-103-07461	
Field: RANGELY	City (SAP): RANGELY	County/Parish: Rio Blanco	State: Colorado
Legal Description: Section 33 Township 02N Range 102W			
Lat: N 40.099 deg. OR N 40 deg. 5 min. 57.178 secs.		Long: W 108.853 deg. OR W -109 deg. 8 min. 48.354 secs.	
Contractor: WORK OVER		Rig/Platform Name/Num: WORK OVER	
Job Purpose: Cement Production Casing		Ticket Amount:	
Well Type: Producing Well		Job Type: Cement Production Casing	
Sales Person: SPENCER, WESTON	Srvc Supervisor: CHASTAIN, DERICK	MBU ID Emp #: 455848	

Activity Description	Date/Time	Cht #	Rate bbl/min	Volume bbl		Pressure psig		Comments
				Stage	Total	Tubing	Casing	
Call Out	08/03/2012 03:30							DIPATCH CALLS OUT CREW.
Arrive At Loc	08/03/2012 07:30							RIG CIRCULATING OUT BRINE WATER.
Other	08/03/2012 08:00							SPOT EQUIPMENT
Pre-Rig Up Safety Meeting	08/03/2012 08:20							ALL HES EE'S ATTEND
Rig-Up Equipment	08/03/2012 08:30							1 HT 400 PUMP, 1 660 BULK TRAILER, 1 SUPERFLUSH TRANSPORT, 1 F-450 PICK-UP, 1 PLUG CONTAINER
Pre-Job Safety Meeting	08/03/2012 09:00							ALL HES AND RIG CREW ATTENDS
Start Job	08/03/2012 09:37							TP- 6102.2', SJ- 42.7', CASING 5 1/2" 17# L-80, EXISTING CASING 7" 23# J-55, WF - 8.4 PPG H2O. USED RIGS LATCH-DOWN PLUG.
Other	08/03/2012 09:37		6	2			270.0	FILL LINES
Test Lines	08/03/2012 09:38							TESTED TO 3140 PSI, HELD PRESSURE FOR 2 MIN NO LEAKS
Pump Spacer 1	08/03/2012 09:44		2	10			160.0	CALSIUM CHLORIDE SPACER.
Pump Spacer 1	08/03/2012 09:49		2	5			130.0	FRESH WATER
Pump Spacer 2	08/03/2012 09:52		2	20			115.0	SUPER FLUSH
Activity Description	Date/Time	Cht #	Rate bbl/min	Volume bbl		Pressure psig		Comments
				Stage	Total	Tubing	Casing	

Sold To #: 338668

Ship To #: 2938132

Quote #:

Sales Order #:

9710678

SUMMIT Version: 7.3.0039

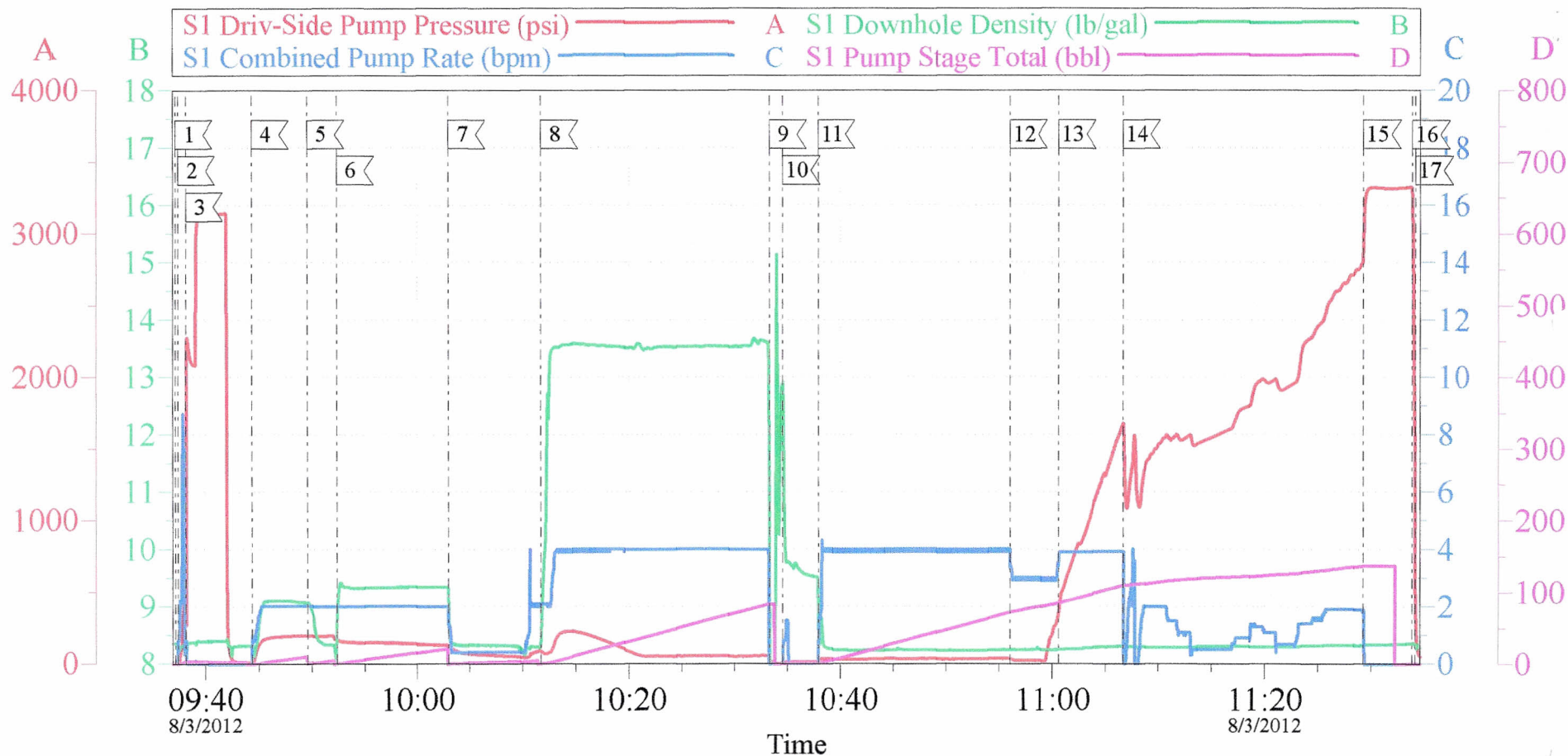
Friday, August 03, 2012 12:57:00

Cementing Job Log

Pump Spacer 1	08/03/2012 10:02		2	5			58.0	PUMPED AT 0.5 BPM UNTIL TUB WEIGHED UP, THEN BROUGHT RATE UP TO 2 BPM
Pump Cement	08/03/2012 10:11		4	75.3			170.0	300 SKS, 13.5 PPG, 1.41 FT3/SK, 6.68 GAL/SK
Shutdown	08/03/2012 10:33							
Drop Top Plug	08/03/2012 10:34							VERIFY PLUG LEFT CONTAINER. HAD TO KNOCK PLUG DOWN INTO CASING.
Pump Displacement	08/03/2012 10:37		4	140.7			2680.0	FRESH H2O DISPLACEMENT
Slow Rate	08/03/2012 10:56		3	71			27.0	SLOWED RATE PER CO REPS REQUEST.
Other	08/03/2012 11:00		4	85			2680.0	INCREASE PUMP RATE
Other	08/03/2012 11:06							HIT KICK OUTS.
Bump Plug	08/03/2012 11:29		2	140.7			3322.0	PLUG BUMPED AT 2680 PSI THEN PRESSURED UP TO 3322 PSI
Check Floats	08/03/2012 11:33							FLOATS HELD, 1.5 BBLs BACK TO PUMP TRUCK
End Job	08/03/2012 11:34							GOOD RETURNS THROUGHOUT JOB. RIG USED 50# OF SUGAR.
Pre-Rig Down Safety Meeting	08/03/2012 11:45							ALL HES EE'S ATTEND
Rig-Down Equipment	08/03/2012 12:00							
Pre-Convoy Safety Meeting	08/03/2012 12:50							ALL HES EE'S ATTEND
Crew Leave Location	08/03/2012 13:00							THANKS FOR CHOOSING HALLIBURTON, DERICK CHASTAIN AND CREW

CHEVRON - SW MCLAUGHLIN 7X

5 1/2" LINER



Local Event Log

1 START JOB	09:37:13	2 FILL LINES	09:37:27	3 TEST LINES	09:38:11
4 PUMP CC SPACER	09:44:23	5 PUMP H2O SPACER	09:49:36	6 PUMP SUPERFLUSH	09:52:23
7 PUMP H2O SPACER	10:02:57	8 PUMP CEMENT	10:11:42	9 SHUTDOWN	10:33:17
10 DROP PLUG	10:34:34	11 PUMP DISPLACEMENT	10:37:53	12 SLOW RATE	10:56:02
13 INCREASE RATE	11:00:37	14 HIT K/O	11:06:42	15 BUMP PLUG	11:29:17
16 CHECK FLOATS	11:33:52	17 END JOB	11:34:10		

Customer: Chevron
Well Description: SW McLaughlin 7X
Company Rep: Kieth Hejl

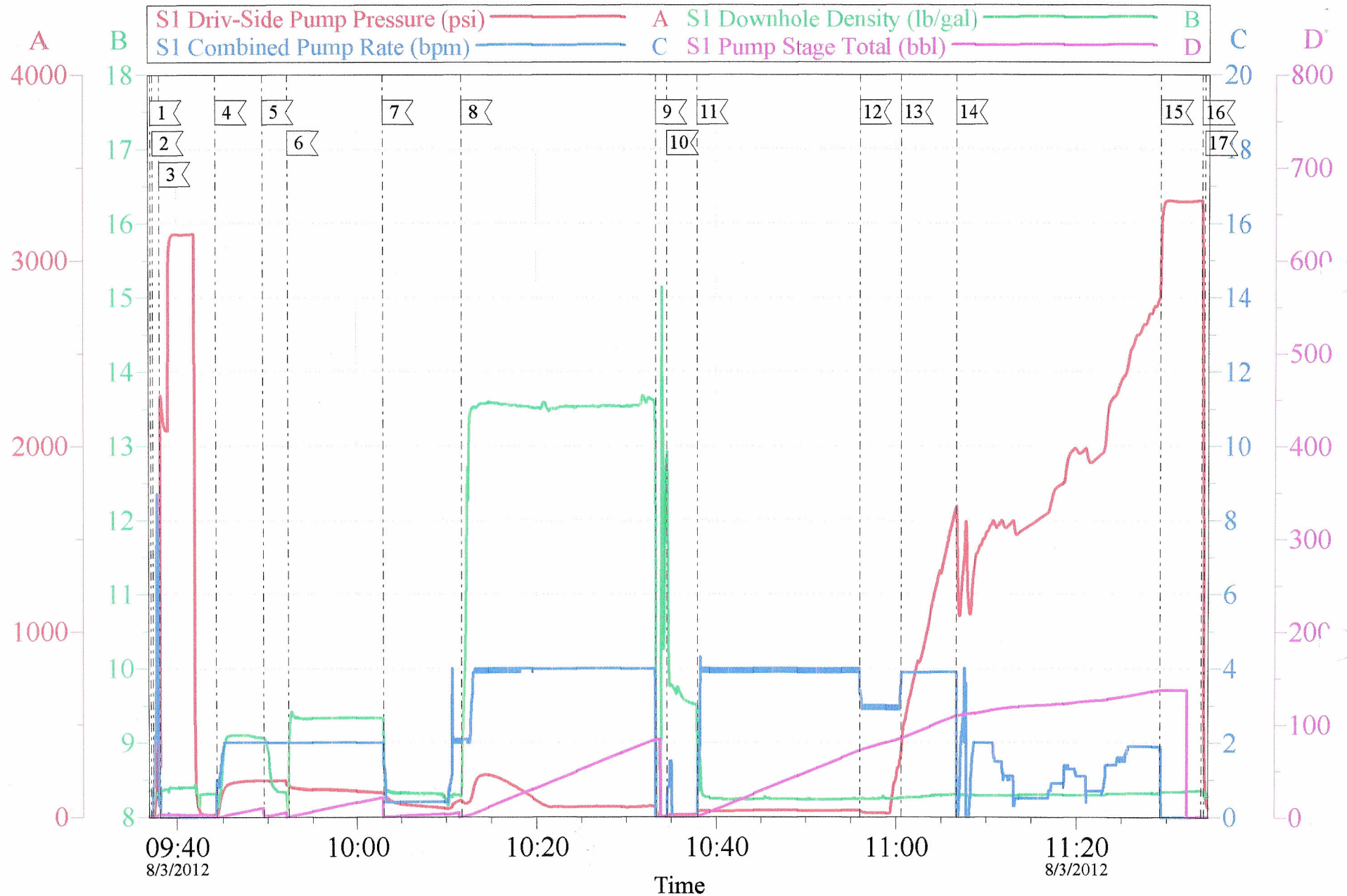
Job Date: 03-Aug-2012
Job Type: Liner
Cement Supervisor: Derick Chastain

Sales Order #: 9710678
ADC Used: Yes
Elite #: Andrew Linn

OptiCem v6.4.10
03-Aug-12 11:59

CHEVRON - SW MCLAUGHLIN 7X

5 1/2" LINER



Customer: Chevron
Well Description: SW McLaughlin 7X
Company Rep: Kieth Hejl

Job Date: 03-Aug-2012
Job Type: Liner
Cement Supervisor: Derick Chastain

Sales Order #: 9710678
ADC Used: Yes
Elite #7: Andrew Linn

OptiCem v6.4.10
03-Aug-12 12:00