

The Road to Excellence Starts with Safety

| | | | |
|---|----------------------------|--|-------------------------------|
| Sold To #: 338668 | Ship To #: 338668 | Quote #: | Sales Order #: 9654510 |
| Customer: CHEVRON - MID-CONTINENT EBIZ | | Customer Rep: | |
| Well Name: SW McLaughlin 7 | | Well #: 7 | API/UWI #: |
| Field: | City (SAP): HOUSTON | County/Parish: Rio Blanco | State: Colorado |
| Legal Description: | | | |
| Lat: N 0 deg. OR N 0 deg. 0 min. 0 secs. | | Long: E 0 deg. OR E 0 deg. 0 min. 0 secs. | |
| Contractor: WORKOVER | | Rig/Platform Name/Num: workover | |
| Job Purpose: Plug Back | | Ticket Amount: | |
| Well Type: Producing Well | | Job Type: Plug Back | |
| Sales Person: SPENCER, WESTON | | Srvc Supervisor: WILLIAMS, CAMERON | MBU ID Emp #: 438405 |

| Activity Description | Date/Time | Cht # | Rate bbl/min | Volume bbl | | Pressure psig | | Comments |
|----------------------------|------------------|-------|--------------|------------|-------|---------------|--------|---|
| | | | | Stage | Total | Tubing | Casing | |
| Call Out | 07/09/2012 03:00 | | | | | | | |
| Depart Yard Safety Meeting | 07/09/2012 04:45 | | | | | | | |
| Crew Leave Yard | 07/09/2012 05:00 | | | | | | | |
| Arrive At Loc | 07/09/2012 06:15 | | | | | | | No one else on location |
| Pre-Rig Up Safety Meeting | 07/09/2012 08:45 | | | | | | | Also conducted pre job meeting Covered rig up, PPE, safety procedure and job. |
| Rig-Up Equipment | 07/09/2012 09:00 | | | | | | | Rig crew assisted rig up |
| Rig-Up Completed | 07/09/2012 10:00 | | | | | | | |
| Pressure Test | 07/09/2012 10:10 | | 0.5 | 0.5 | | 5300.0 | .0 | |
| Pump Water | 07/09/2012 10:13 | | 2 | 20 | | 120.0 | .0 | Got returns back at 13 bbls away |
| Pump Cement | 07/09/2012 10:24 | | 2 | 21 | | 100.0 | .0 | 100 sks 15.8 lb/gal 1.15 ft ³ /sk 4.99 gal/sk |
| Pump Displacement | 07/09/2012 10:32 | | 4 | 11.4 | | 140.0 | .0 | Suck 1 bbls after shutdown then we shut our valves |
| Shutdown | 07/09/2012 10:35 | | | | | | | |
| Clean Lines | 07/09/2012 10:40 | | | | | | | |
| Other | 07/09/2012 10:40 | | | | | | | Pull 15 Stands |
| Reverse Circ Well | 07/09/2012 10:48 | | 5 | 20 | | | 350.0 | No visible cement back |
| Pressure Up Tubing | 07/09/2012 11:16 | | 1 | 1 | | 1000.0 | | Lost 200 psi in 4 minutes |

Sold To # : 338668

Ship To # : 338668

Quote # :

Sales Order # : 9654510

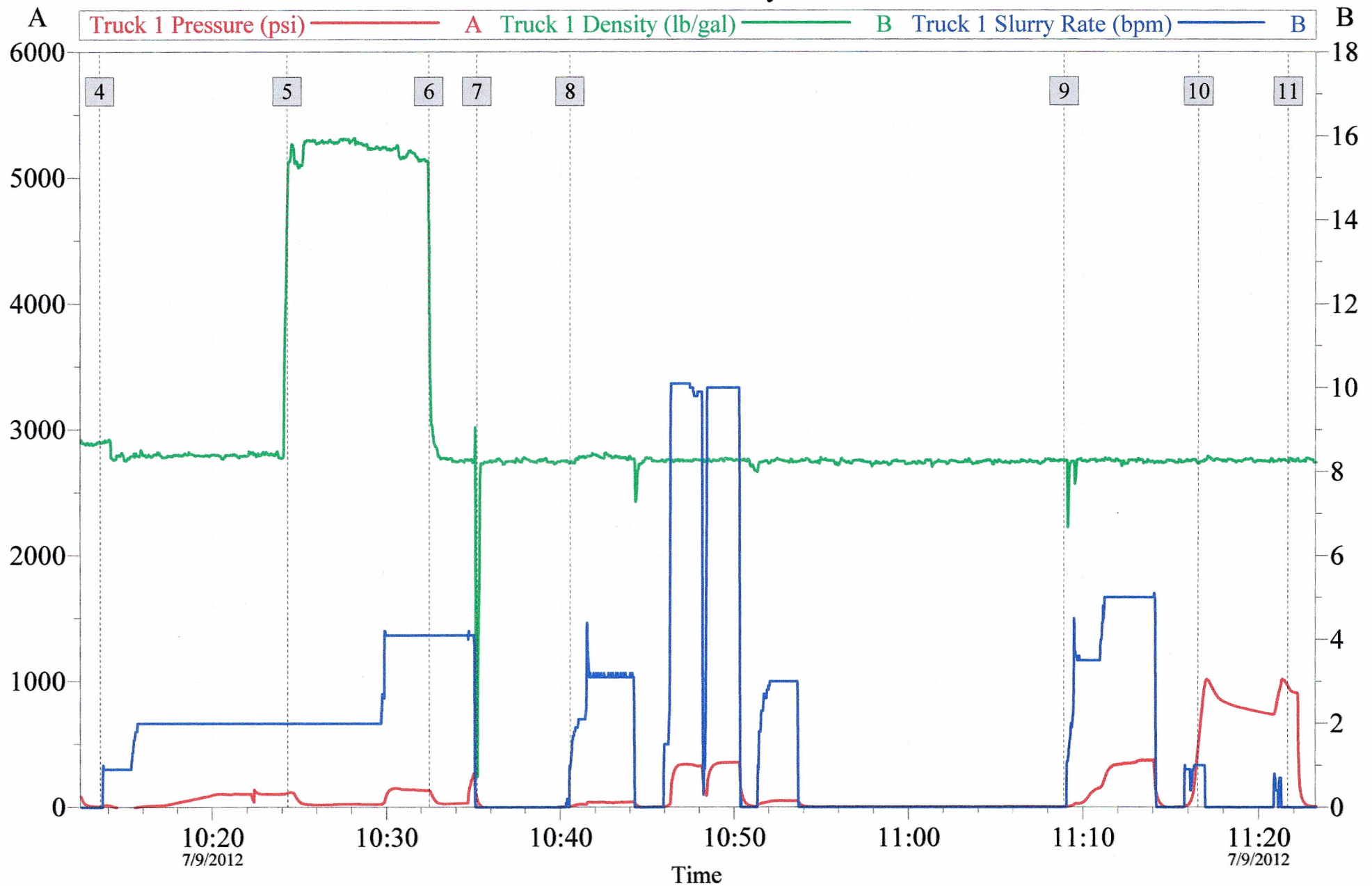
SUMMIT Version: 7.3.0030

Monday, July 09, 2012 11:54:00

| Activity Description | Date/Time | Cht # | Rate bbl/ min | Volume bbl | | Pressure psig | | Comments |
|---|---------------------|----------|---------------------|---------------|-------|------------------|--------|--|
| | | | | Stage | Total | Tubing | Casing | |
| Pressure Up Tubing | 07/09/2012 11:21 | | 1 | 0.25 | | 1000. 0 | | |
| Shut In Well | 07/09/2012 11:21 | | | | | | | Leave 1 in valve and 27/8 swage on tubing |
| Post-Job Safety Meeting (Pre Rig-Down) | 07/09/2012 11:25 | | | | | | | |
| Rig-Down Equipment | 07/09/2012 11:30 | | | | | | | |
| Rig-Down Completed | 07/09/2012 12:15 | | | | | | | |
| Depart Location Safety Meeting | 07/09/2012 12:20 | | | | | | | |
| Crew Leave Location | 07/09/2012 12:30 | | | | | | | |

Chevron Sw McLaughlin 7 Plug

Job Summary



Customer: Chevron
 Job Description: Plug
 Service Supervisor: C. Williams

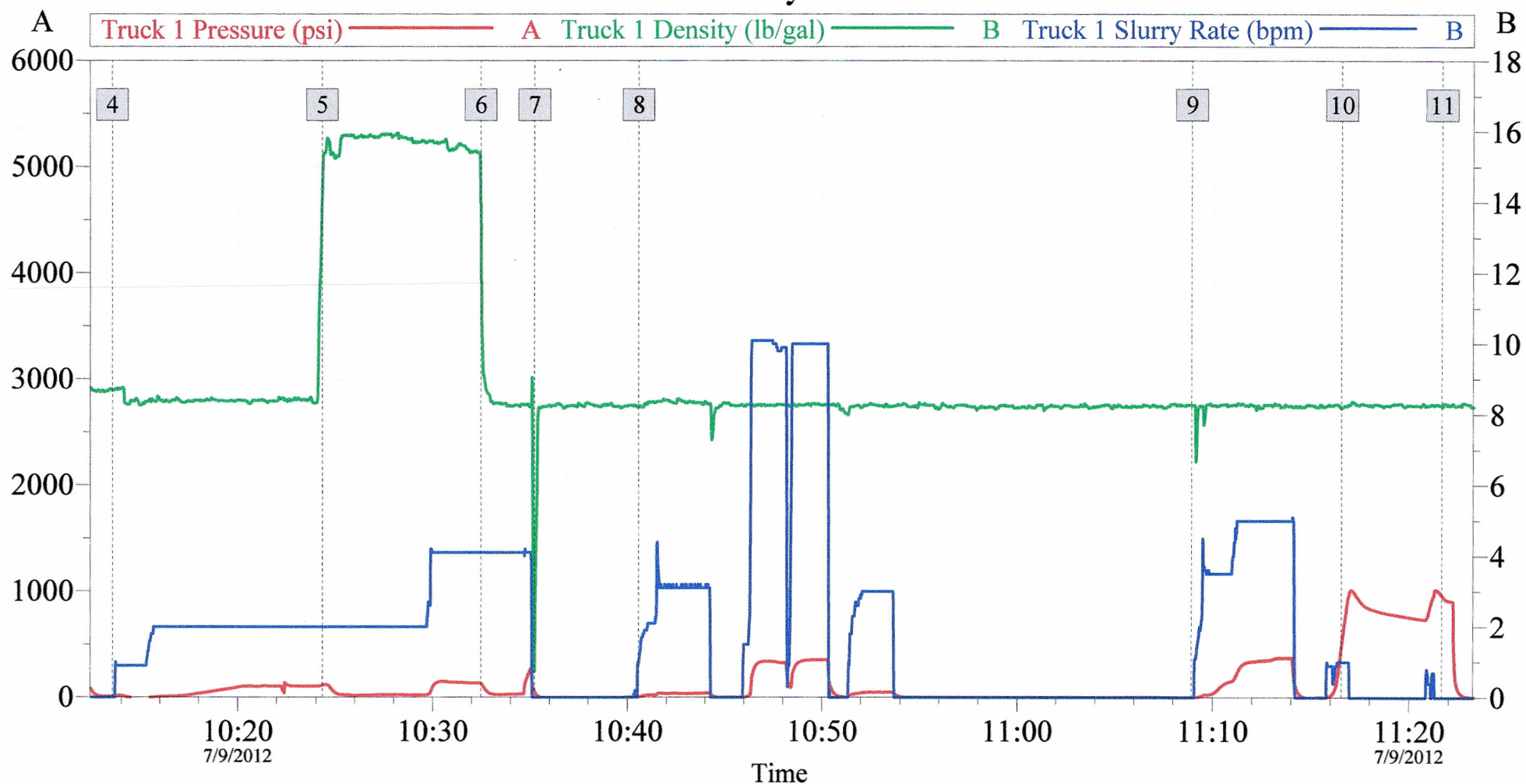
Job Date: 09-Jul-2012
 UWI:
 Service Operator: J. Bone

Sales Order #: 9654510
 Elite #: 11512092
 Service Leader: NA

OptiCem v6.4.10
 09-Jul-12 11:35

Chevron Sw McLaughlin 7 Plug

Job Summary w/ Events



Global Event Log

| | | | | | |
|-----------------------|----------|-----------------|----------|---------------------|----------|
| 4 Pump Water | 10:13:32 | 5 Pump Cement | 10:24:20 | 6 Pump Displacement | 10:32:28 |
| 7 Shutdown | 10:35:14 | 8 Clean Lines | 10:40:34 | 9 Reverse Circ Well | 11:08:55 |
| 10 Pressure Up Tubing | 11:16:34 | 11 Shut In Well | 11:21:39 | | |

Customer: Chevron
Job Description: Plug
Service Supervisor: C. Williams

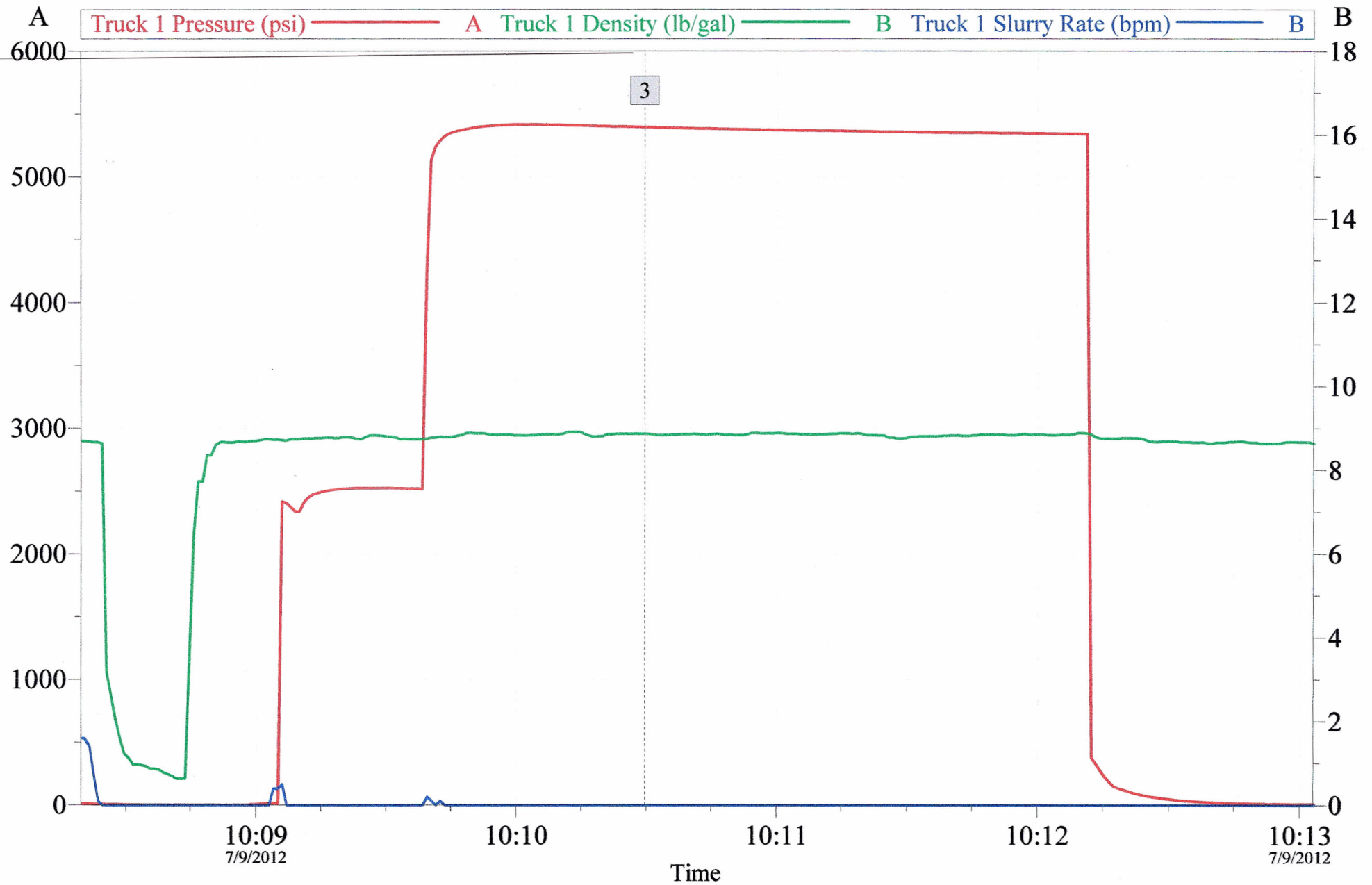
Job Date: 09-Jul-2012
UWI:
Service Operator: J. Bone

Sales Order #: 9654510
Elite #: 11512092
Service Leader: NA

OptiCem v6.4.10
09-Jul-12 11:35

Chevron Sw McLaughlin 7 Plug

Pressure Test



Customer: Chevron
Job Description: Plug
Service Supervisor: C. Williams

Job Date: 09-Jul-2012
UWI:
Service Operator: J. Bone

Sales Order #: 9654510
Elite #: 11512092
Service Leader: NA

OptiCem v6.4.10
09-Jul-12 10:47