

The Road to Excellence Starts with Safety

Sold To #: 300721	Ship To #: 2876346	Quote #:	Sales Order #: 8445482
Customer: WILLIAMS PRODUCTION RMT INC - EBUS	Customer Rep: OLSEN, MIKE		
Well Name: NR	Well #: 523-3	API/UWI #: 05-045-20523	
Field: Rulison	City (SAP): RIFLE	County/Parish: Garfield	State: Colorado
Lat: N 39.553 deg. OR N 39 deg. 33 min. 9.598 secs.	Long: W 107.877 deg. OR W -108 deg. 7 min. 21.414 secs.		
Contractor: H&P Drilling	Rig/Platform Name/Num: H&P 280		
Job Purpose: Cement Surface Casing			
Well Type: Development Well	Job Type: Cement Surface Casing		
Sales Person: KOHL, KYLE	Srv Supervisor: SMITH, DUSTIN	MBU ID Emp #: 418015	

Job Personnel

HES Emp Name	Exp Hrs	Emp #	HES Emp Name	Exp Hrs	Emp #	HES Emp Name	Exp Hrs	Emp #
HAYES, JESSE Doug	8.5	403601	KUKUS, CRAIG A	8.5	369124	SMITH, DUSTIN Michael	8.5	418015
WYCKOFF, RYAN Scott	8.5	476117						

Equipment

HES Unit #	Distance-1 way	HES Unit #	Distance-1 way	HES Unit #	Distance-1 way	HES Unit #	Distance-1 way
10867304	60 mile	10872429	60 mile	10998054	60 mile	11259883	60 mile
11360883	60 mile						

Job Hours

Date	On Location Hours	Operating Hours	Date	On Location Hours	Operating Hours	Date	On Location Hours	Operating Hours
09/21/11	8.5	2.5						

TOTAL Total is the sum of each column separately

Job

Formation Name	Top	Bottom	Called Out	Date	Time	Time Zone
Formation Depth (MD)			On Location	21 - Sep - 2011	11:15	MST
Form Type	BHST		Job Started	21 - Sep - 2011	14:30	MST
Job depth MD	1160. ft	Job Depth TVD	Job Started	21 - Sep - 2011	20:31	MST
Water Depth		Wk Ht Above Floor	Job Completed	21 - Sep - 2011	21:28	MST
Perforation Depth (MD)	From	To	Departed Loc	21 - Sep - 2011	23:00	MST

Well Data

Description	New / Used	Max pressure psig	Size in	ID in	Weight lbm/ft	Thread	Grade	Top MD ft	Bottom MD ft	Top TVD ft	Bottom TVD ft
13 1/2" Open Hole				13.5				.	1100.		
9 5/8" Surface Casing	New		9.625	9.001	32.3		H-40	.	1142.		

Sales/Rental/3rd Party (HES)

Description	Qty	Qty uom	Depth	Supplier
PLUG,CMTG,TOP,9 5/8,HWE,8.16 MIN/9.06 MA	1	EA		

Tools and Accessories

Type	Size	Qty	Make	Depth	Type	Size	Qty	Make	Depth	Type	Size	Qty	Make
Guide Shoe					Packer					Top Plug	9 5/8	1	
Float Shoe					Bridge Plug					Bottom Plug			
Float Collar					Retainer					SSR plug set			
Insert Float										Plug Container	9 5/8	1	
Stage Tool										Centralizers			

Miscellaneous Materials

Gelling Agt	Conc	Surfactant	Conc	Acid Type	Qty	Conc	%
Treatment Fld	Conc	Inhibitor	Conc	Sand Type	Size		Qty

Fluid Data

Stage/Plug #: 1

Fluid #	Stage Type	Fluid Name	Qty	Qty uom	Mixing Density lbm/gal	Yield ft ³ /sk	Mix Fluid Gal/sk	Rate bbl/min	Total Mix Fluid Gal/sk
1	Water Spacer		20.00	bbl	8.34	.0	.0	4.0	
2	VersaCem Lead Cement	VERSACEM (TM) SYSTEM (452010)	160.0	sacks	12.3	2.38	13.75	8.0	13.75
	13.75 Gal	FRESH WATER							
3	VersaCem Tail Cement	VERSACEM (TM) SYSTEM (452010)	160.0	sacks	12.8	2.11	11.75	8.0	11.75
	11.75 Gal	FRESH WATER							
4	Displacement Fluid		86.4	bbl	8.34	.0	.0	8.0	
Calculated Values		Pressures		Volumes					
Displacement	86.4	Shut In: Instant		Lost Returns	0	Cement Slurry	127.9	Pad	
Top Of Cement	SURFACE	5 Min		Cement Returns	26	Actual Displacement	86.4	Treatment	
Frac Gradient		15 Min		Spacers	20	Load and Breakdown		Total Job	234.3
Rates									
Circulating		Mixing	8	Displacement	8	Avg. Job			8
Cement Left In Pipe	Amount	43.66 ft	Reason	Shoe Joint					
Frac Ring # 1 @	ID	Frac ring # 2 @	ID	Frac Ring # 3 @	ID	Frac Ring # 4 @	ID		
The Information Stated Herein Is Correct				Customer Representative Signature					

The Road to Excellence Starts with Safety

Sold To #: 300721	Ship To #: 2876346	Quote #:	Sales Order #: 8445482
Customer: WILLIAMS PRODUCTION RMT INC - EBUS	Customer Rep: OLSEN, MIKE		
Well Name: NR	Well #: 523-3	API/UWI #: 05-045-20523	
Field: Rulison	City (SAP): RIFLE	County/Parish: Garfield	State: Colorado
Legal Description:			
Lat: N 39.553 deg. OR N 39 deg. 33 min. 9.598 secs.		Long: W 107.877 deg. OR W -108 deg. 7 min. 21.414 secs.	
Contractor: H&P Drilling	Rig/Platform Name/Num: H&P 280		
Job Purpose: Cement Surface Casing	Ticket Amount:		
Well Type: Development Well	Job Type: Cement Surface Casing		
Sales Person: KOHL, KYLE	Srv Supervisor: SMITH, DUSTIN	MBU ID Emp #: 418015	

Activity Description	Date/Time	Cht #	Rate bbl/min	Volume bbl		Pressure psig		Comments
				Stage	Total	Tubing	Casing	
Call Out	09/21/2011 11:15							ELITE # 7
Depart Yard Safety Meeting	09/21/2011 13:00							ALL HES EMPLOYEES
Arrive At Loc	09/21/2011 14:30							ARRIVED ON LOCATION 1 HOUR EARLY DIDNT START CHARGING TIME UNTIL REQUESTED ON LOCATION TIME RIG RUNNING WIPER TRIP
Assessment Of Location Safety Meeting	09/21/2011 15:00							ALL HES EMPLOYEES
Pre-Rig Up Safety Meeting	09/21/2011 15:20							ALL HES EMPLOYEES
Rig-Up Equipment	09/21/2011 15:30							1 F-550 PICKUP 1 HT-400 PUMP TRUCK 1 660 BULK TRUCK
Pre-Job Safety Meeting	09/21/2011 20:10							ALL HES EMPLOYEES AND RIG CREW
Rig-Up Completed	09/21/2011 20:30							RIG CIRCULATED FOR 30 MINUTES PRIOR TO JOB
Start Job	09/21/2011 20:31							TD: 1160 TP: 1142 SJ: 43.66 MUD WT: 9.6 PPG 9 5/8 32.3# CSG 13 1/2 OH
Test Lines	09/21/2011 20:32					3100.0		PRESSURE TEST OK
Pump Spacer	09/21/2011 20:37		4	20	20		101.0	FRESH WATER
Activity Description	Date/Time	Cht #	Rate bbl/min	Volume bbl		Pressure psig		Comments
				Stage	Total	Tubing	Casing	

Sold To # : 300721

Ship To # :2876346

Quote # :

Sales Order # : 8445482

SUMMIT Version: 7.2.27

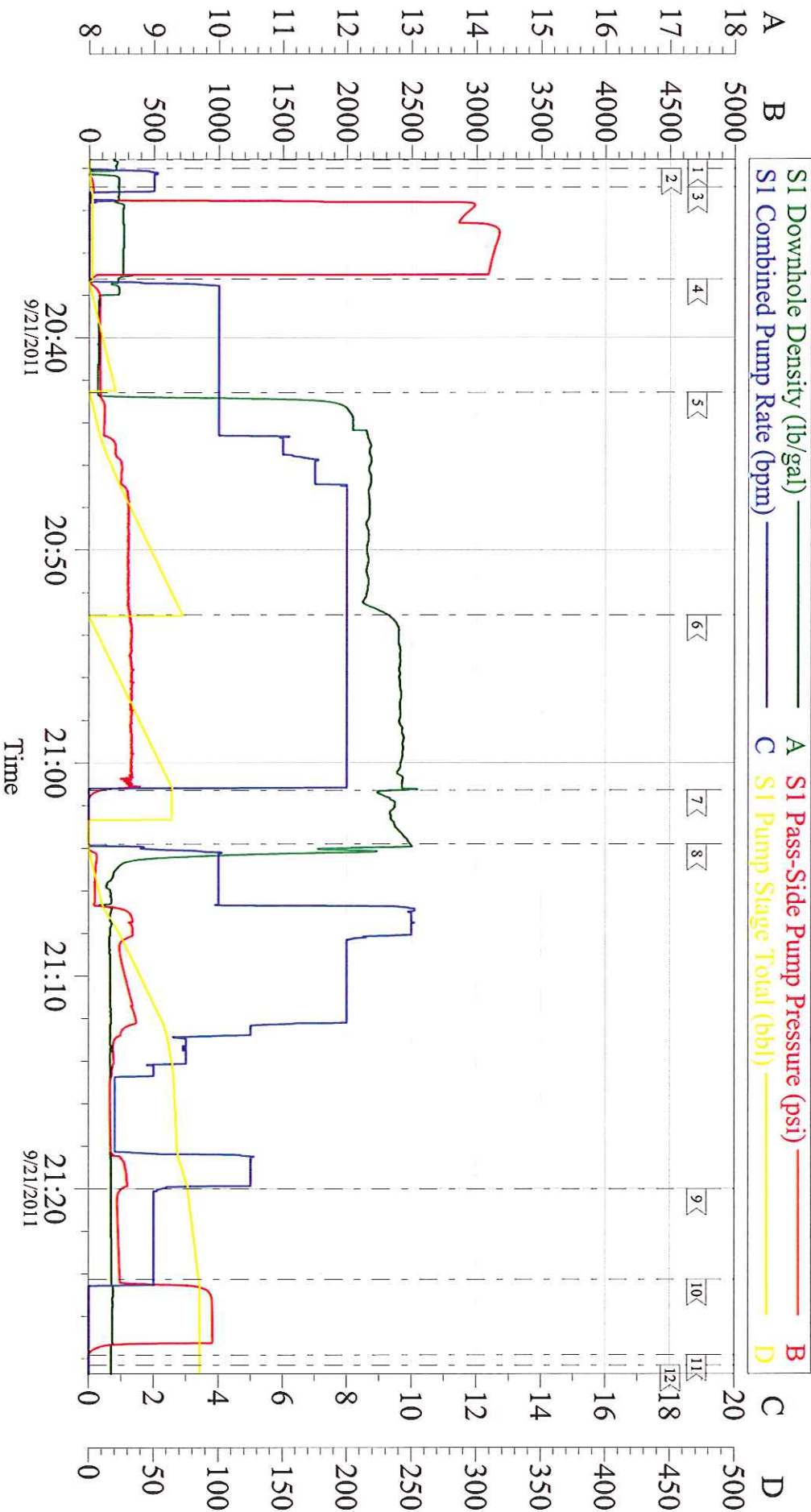
Wednesday, September 21, 2011 09:48:00

Cementing Job Log

Pump Lead Cement	09/21/2011 20:42		8	67.8	67.8		316.0	160 SKS 12.3 PPG 2.38 YIELD 13.75 GAL/SK CEMENT WEIGHED UP VIA MUD SCALES THROUGHOUT LEAD CEMENT
Pump Tail Cement	09/21/2011 20:53		8	60.1	60.1		355.0	160 SKS 12.8 2.11 YIELD 11.75 GAL/SK CEMENT WEIGHED UP VIA MUD SCALES THROUGHOUT TAIL CEMENT
Shutdown	09/21/2011 21:01							
Drop Plug	09/21/2011 21:01							PLUG AWAY NO PROBLEMS
Pump Displacement	09/21/2011 21:03		10	86.4	86.4		350.0	FRESH WATER WASHED UP ON TOP OF PLUG HAD TO SLOW RATE ON DISPLACEMENT DUE TO DREDGE PUMP IN CELLAR NOT WORKING PROPERLY PICKED RATE BACK UP ONCE PUMP WAS WORKING AGAIN
Slow Rate	09/21/2011 21:20		2	76	76		290.0	SLOW RATE TO BUMP PLUG
Bump Plug	09/21/2011 21:24		2	86.4	86.4		960.0	PSI BEFORE BUMPING PLUG WAS 290 PSI BUMPED PLUG UP TO 960 PSI
Check Floats	09/21/2011 21:27							FLOATS HELD 3/4 BBL BACK INTO DISPLACEMENT TANK
End Job	09/21/2011 21:28							GOOD CIRCULATION THROUGHOUT JOB NO PIPE MOVEMENT DURING JOB 26 BBLS CEMENT TO SURFACE
Pre-Rig Down Safety Meeting	09/21/2011 21:30							ALL HES EMPLOYEES
Rig-Down Equipment	09/21/2011 22:00							
Pre-Convoy Safety Meeting	09/21/2011 22:50							ALL HES EMPLOYEES
Crew Leave Location	09/21/2011 23:00							THANK YOU FOR USING HALLIBURTON CEMENT DUSTIN SMITH AND CREW

WILLIAMS PRODUCTION

NR 523-3 9 5/8 SURFACE



Customer: WILLIAMS PRODUCTION
Well Description: NR 523-3
Company Rep: MIKE OLSEN

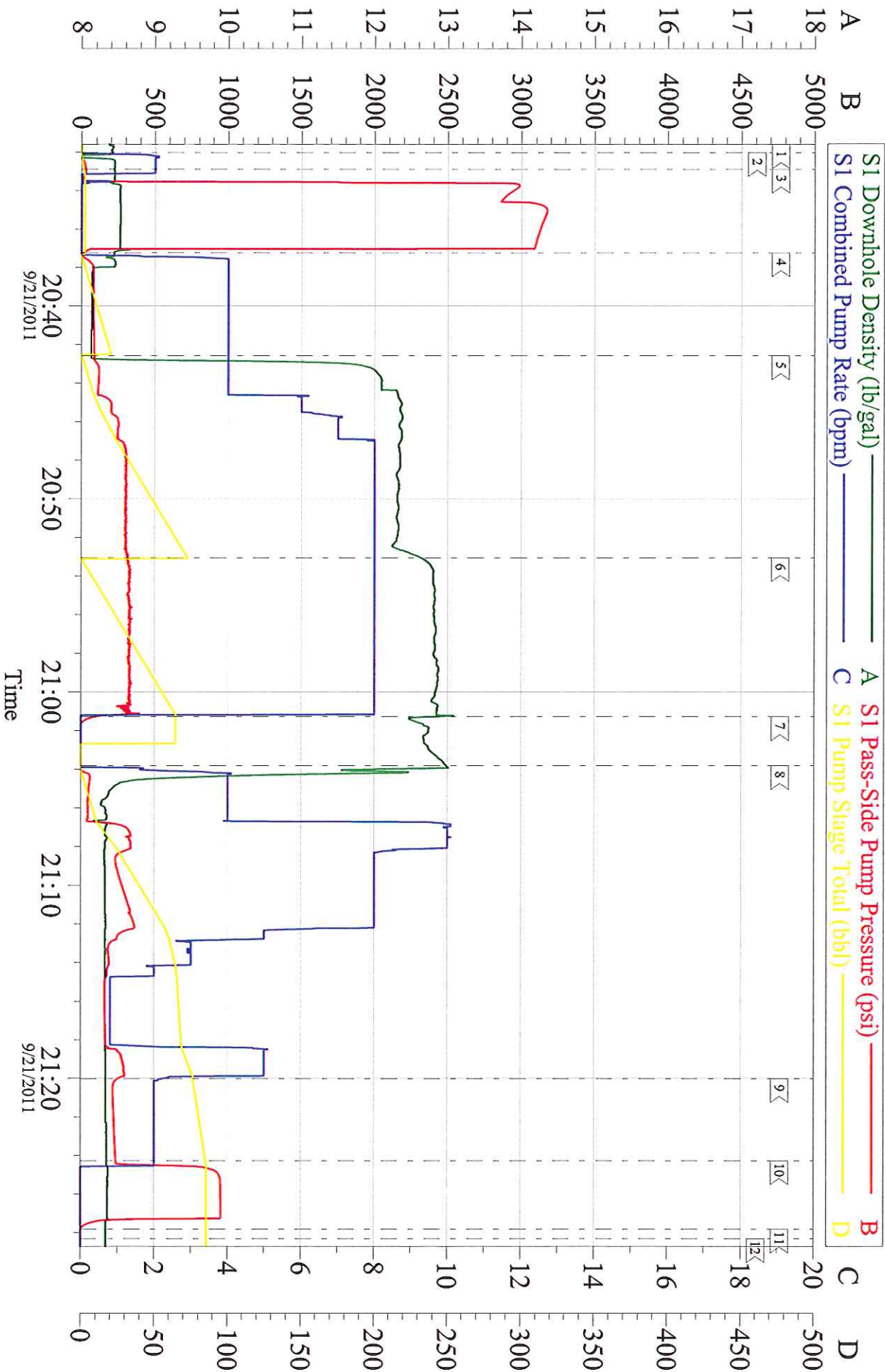
Job Date: 21-Sep-2011
Job Type: 9 5/8 SURFACE
Cement Supervisor: DUSTIN SMITH

Sales Order #: 8445482
ADC Used: YES
Elite #: 7 RYAN WYCKOFF

OptiCem v6.4.10
21-Sep-11 21:36

WILLIAMS PRODUCTION

NR 523-3 9 5/8 SURFACE



Customer: WILLIAMS PRODUCTION
 Well Description: NR 523-3
 Company Rep: MIKE OLSEN

Job Date: 21-Sep-2011
 Job Type: 9 5/8 SURFACE
 Cement Supervisor: DUSTIN SMITH

Sales Order #: 8445482
 ADC Used: YES
 Elite #: 7 RYAN WYCKOFF

OptiCem v6.4.10
 21-Sep-11 21:36