

*The Road to Excellence Starts with Safety*

Sold To #: 300721	Ship To #: 288076	Quote #:	Sales Order #: 8490162
Customer: WILLIAMS PRODUCTION RMT INC - EBUS	Customer Rep: Wilson, W.C.		
Well Name: NR	Well #: 422-3	API/UWI #: 05-045-20525	
Field: Rulison	City (SAP): Rifle	County/Parish: Garfield	State: Colorado
Lat: N 39.553 deg. OR N 39 deg. 33 min. 10.069 secs.	Long: W 107.877 deg. OR W -108 deg. 7 min. 21.695 secs.		
Contractor: H&P Drilling	Rig/Platform Name/Num: H&P 280		
Job Purpose: Cement Surface Casing			
Well Type: Development Well	Job Type: Cement Surface Casing		
Sales Person: KOHL, KYLE	Srv Supervisor: SMITH, CHRISTOPHER	MBU ID Emp #: 452619	

**Job Personnel**

HES Emp Name	Exp Hrs	Emp #	HES Emp Name	Exp Hrs	Emp #	HES Emp Name	Exp Hrs	Emp #
EICKHOFF, ROBERT Edward	7	495311	GREGORY, JON D	7	439067	KEANE, JOHN Donovan	7	486519
LEIST, JAMES R	7	362787	SMITH, CHRISTOPHER Scott	7	452619			

**Equipment**

HES Unit #	Distance-1 way	HES Unit #	Distance-1 way	HES Unit #	Distance-1 way	HES Unit #	Distance-1 way
11021972	60 mile	11027039	60 mile	11259882	60 mile	11360871	60 mile
11542767	60 mile	11583915	60 mile				

**Job Hours**

Date	On Location Hours	Operating Hours	Date	On Location Hours	Operating Hours	Date	On Location Hours	Operating Hours
10.16.2011	7	2						

**TOTAL** Total is the sum of each column separately

**Job**

Formation Name	Top	Bottom	2445	Date	Time	Time Zone
Formation Depth (MD)	0	Bottom	2445	Called Out	16 - Oct - 2011	07:00 MST
Form Type	BHST			On Location	16 - Oct - 2011	10:00 MST
Job depth MD	2445. ft	Job Depth TVD	2445. ft	Job Started	16 - Oct - 2011	14:19 MST
Water Depth		Wk Ht Above Floor	3. ft	Job Completed	16 - Oct - 2011	15:51 MST
Perforation Depth (MD)	From	To		Departed Loc	16 - Oct - 2011	17:00 MST

**Well Data**

Description	New / Used	Max pressure psig	Size in	ID in	Weight lbm/ft	Thread	Grade	Top MD ft	Bottom MD ft	Top TVD ft	Bottom TVD ft
13 1/2" Open Hole				13.5				.	2450.		
9 5/8" Surface Casing	New		9.625	9.001	32.3		H-40	.	2450.		

**Sales/Rental/3<sup>rd</sup> Party (HES)**

Description	Qty	Qty uom	Depth	Supplier
PLUG,CMTG,TOP,9 5/8,HWE,8.16 MIN/9.06 MA	1	EA		

**Tools and Accessories**

Type	Size	Qty	Make	Depth	Type	Size	Qty	Make	Depth	Type	Size	Qty	Make
Guide Shoe					Packer					Top Plug	9.625	1	HES
Float Shoe					Bridge Plug					Bottom Plug			
Float Collar					Retainer					SSR plug set			
Insert Float										Plug Container	9.625	1	HES
Stage Tool										Centralizers			

**Miscellaneous Materials**

Gelling Agt	Conc	Surfactant	Conc	Acid Type	Qty	Conc	%
Treatment Fld	Conc	Inhibitor	Conc	Sand Type	Size	Qty	

**Fluid Data**

Stage/Plug #: 1									
Fluid #	Stage Type	Fluid Name	Qty	Qty uom	Mixing Density lbm/gal	Yield ft <sup>3</sup> /sk	Mix Fluid Gal/sk	Rate bbl/min	Total Mix Fluid Gal/sk
1	Water Spacer		20.00	bbl	8.34	.0	.0	4	
2	VersaCem Lead Cement	VERSACEM (TM) SYSTEM (452010)	490.0	sacks	12.3	2.38	13.75	6	13.75
		13.75 Gal FRESH WATER							
3	VariCemTail Cement	VERSACEM (TM) SYSTEM (452010)	160.0	sacks	12.8	2.11	11.75	6	11.75
		11.75 Gal FRESH WATER							
4	Displacement Fluid		188.00	bbl	8.34	.0	.0	10	
Calculated Values		Pressures		Volumes					
Displacement	187	Shut In: Instant		Lost Returns	0	Cement Slurry	268	Pad	
Top Of Cement		5 Min		Cement Returns	27	Actual Displacement	187	Treatment	
Frac Gradient		15 Min		Spacers	20	Load and Breakdown		Total Job	476
Rates									
Circulating	RIG	Mixing	6	Displacement	10	Avg. Job	8		
Cement Left In Pipe	Amount	43.6 ft	Reason	Shoe Joint					
Frac Ring # 1 @	ID	Frac ring # 2 @	ID	Frac Ring # 3 @	ID	Frac Ring # 4 @	ID		
The Information Stated Herein Is Correct				Customer Representative Signature					



*The Road to Excellence Starts with Safety*

Sold To #: 300721		Ship To #: 288076		Quote #:		Sales Order #: 8490162	
Customer: WILLIAMS PRODUCTION RMT INC - EBUS				Customer Rep: Wilson, W.C.			
Well Name: NR			Well #: 422-3			API/UWI #: 05-045-20525	
Field: Rulison		City (SAP): Rifle		County/Parish: Garfield			State: Colorado
Legal Description:							
Lat: N 39.553 deg. OR N 39 deg. 33 min. 10.069 secs.				Long: W 107.877 deg. OR W -108 deg. 7 min. 21.695 secs.			
Contractor: H&P Drilling			Rig/Platform Name/Num: H&P 280				
Job Purpose: Cement Surface Casing					Ticket Amount:		
Well Type: Development Well			Job Type: Cement Surface Casing				
Sales Person: KOHL, KYLE			Srv Supervisor: SMITH, CHRISTOPHER			MBU ID Emp #: 452619	

Activity Description	Date/Time	Cht #	Rate bbl/min	Volume bbl		Pressure psig		Comments
				Stage	Total	Tubing	Casing	
Pre-Convoy Safety Meeting	10/16/2011 07:00							ALL HES PERSONEL
Crew Leave Yard	10/16/2011 08:30							
Arrive At Loc	10/16/2011 10:00							RIG RUNNING CASEING.
Assessment Of Location Safety Meeting	10/16/2011 10:15							ALL HES PERSONEL
Rig-Up Equipment	10/16/2011 10:30							
Pre-Job Safety Meeting	10/16/2011 14:10							ALL HES PERSONEL AND RIG CREW
Start Job	10/16/2011 14:19							TD 2445', TP 2431.6', SJ 43.6', OH 13.5", CSG 9.625" 32.3# H-40 , MUD 10.1 PPG.
Other	10/16/2011 14:20		2	2			30.0	FILL LINES
Pressure Test	10/16/2011 14:22		0.5	0.5				ALL LINES HELD PRESSURE @ 315 PSI
Pressure Test	10/16/2011 14:23		0.5	0.5				ALL LINES HELD PRESSURE @ 3730 PSI
Pump Spacer 1	10/16/2011 14:25		4	20			130.0	FRESH WATER
Pump Lead Cement	10/16/2011 14:32		6	207.7			300.0	490 SKS, 12.3 PPG, 2.38 FT3/SK, 13.75 GAL/SK, SET UP TIME 4:11 @ 70 BC.
Pump Tail Cement	10/16/2011 14:36		6	60.1			285.0	160 SKS, 12.8 PPG, 2.11 FT3/ SK, 11.75 GAL/SK, SET UP TIME 02:20 @ 70 BC
Shutdown	10/16/2011 15:07							

Sold To # : 300721

Ship To # :288076

Quote # :

Sales Order # :

8490162

SUMMIT Version: 7.2.27

Sunday, October 16, 2011 04:37:00

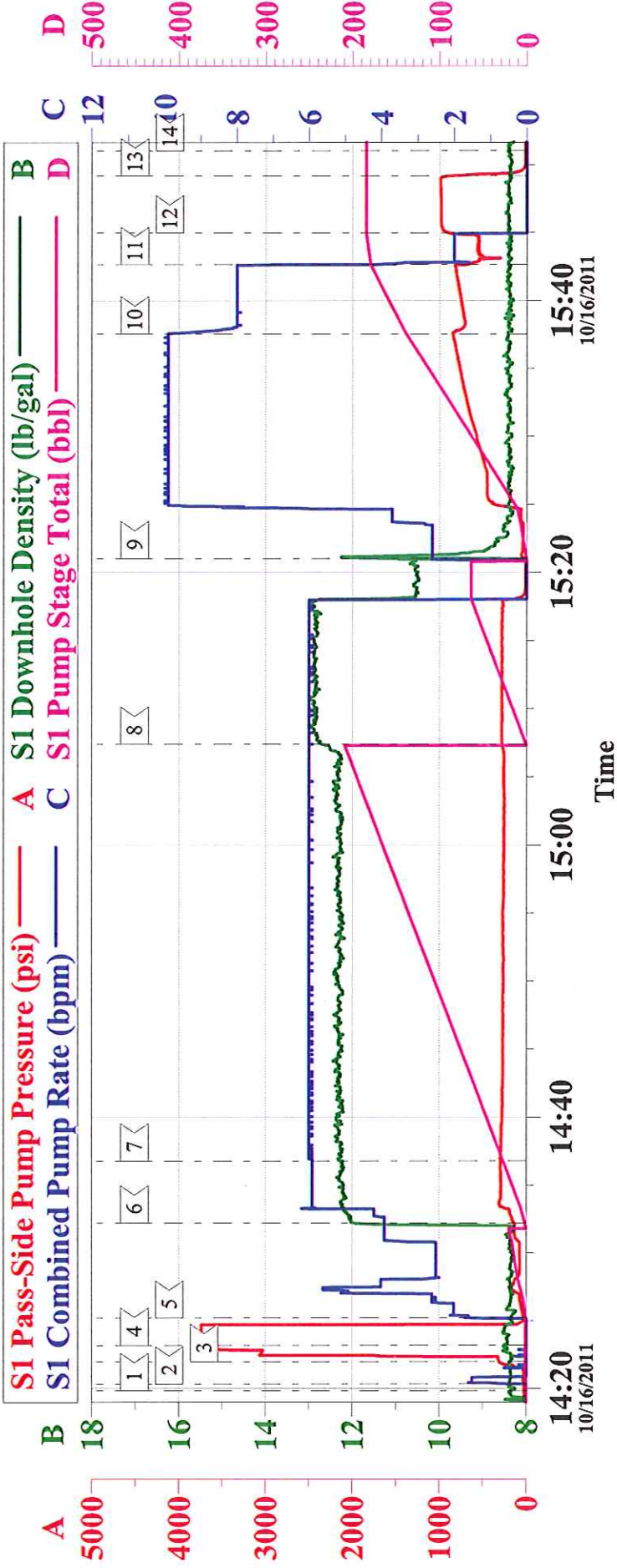
## Cementing Job Log

Activity Description	Date/Time	Cht #	Rate bbl/min	Volume bbl		Pressure psig		Comments
				Stage	Total	Tubing	Casing	
Drop Top Plug	10/16/2011 15:07							PLUG WENT
Pump Displacement	10/16/2011 15:21		8	177.7			915.0	FRESH WATER, SLOWED RATE TO KEEP HYDROSTATIC PRESSURES DOWN.
Slow Rate	10/16/2011 15:42		2	10			550.0	
Bump Plug	10/16/2011 15:45						1000.0	PLUG BUMPED
Check Floats	10/16/2011 15:49							FLOATS HELD
End Job	10/16/2011 15:51							GOOD CIRCULATION THROUGHOUT JOB, 27 BBLs OF CEMENT TO SURFACE, PIPE WAS NOT MOVED DURING THE JOB.
Post-Job Safety Meeting (Pre Rig-Down)	10/16/2011 16:00							ALL HES PERSONEL
Rig-Down Completed	10/16/2011 16:40							
Depart Location Safety Meeting	10/16/2011 16:45							ALL HES PERSONEL
Crew Leave Location	10/16/2011 17:00							
Other	10/16/2011 17:01							THANK YOU FOR CHOOSING HALLIBURTON, CHRIS SMITH AND CREW



# WILLIAMS

## 9.625" SURFACE/NR 422-3



Local Event Log			
Maximum	SPPP	Maximum	SPPP
1< START JOB	14:19:52	2< FILL LINES	14:20:21
3< TEST LINES (LOW)	14:22:00	4< TEST LINES (HIGH)	14:23:12
5< H2O SPACER	14:25:12	6< LEAD CEMENT	14:32:12
7< TAIL CEMENT	14:36:47	8< SHUTDOWN/DROP PLUG	15:07:23
9< H2O DISPLACEMENT	15:21:01	10< SLOW RATE	15:37:33
11< SLOW RATE	15:42:39	12< BUMP PLUG	15:45:00
13< CHECK FLOATS	15:49:12	14< END JOB	15:51:02

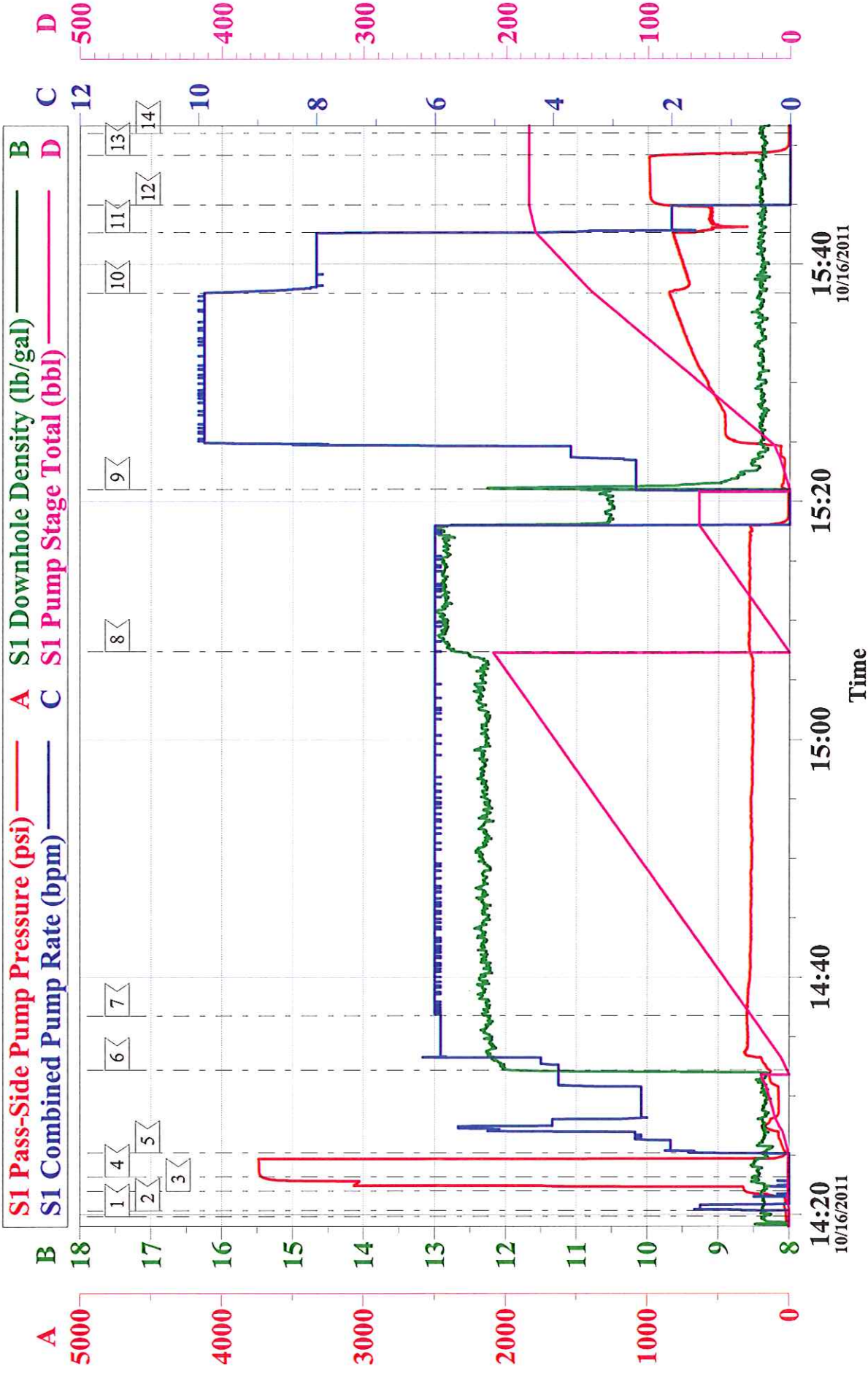
Customer: WILLIAMS PRODUCTION RMT INC - EBUS  
Well Description: NR 422-3  
Customer Rep: W.C. WILSON

Job Date: 16-Oct-2011  
Job type: SURFACE  
Service Supervisor: C. SMITH

Sales Order #: 8490162  
ADC Used: YES  
Operator/ Pump: J. LEIST/EI

# WILLIAMS

## 9.625" SURFACE/NR 422-3



Customer: WILLIAMS PRODUCTION RMT INC - EBUS	Job Date: 16-Oct-2011	Sales Order #: 8490162
Well Description: NR 422-3	Job type: SURFACE	ADC Used: YES
Customer Rep: W.C. WILSON	Service Supervisor: C. SMITH	Operator/ Pump: J. LEIST/EI