

**HALLIBURTON**

---

# **WILLIAMS PRODUCTION RMT INC - EBUS**

---

**KP 31-17  
KOKOPELLI  
Garfield County , Colorado**

**Cement Surface Casing**  
**31-Dec-2011**

**Post Job Report**

*The Road to Excellence Starts with Safety*

Sold To #: 300721	Ship To #: 2896805	Quote #:	Sales Order #: 9133480
Customer: WILLIAMS PRODUCTION RMT INC - EBUS	Customer Rep: Mulherin, Seth		
Well Name: KP	Well #: 31-17	API/UWI #: 05-045-21135	
Field: KOKOPELLI	City (SAP): SILT	County/Parish: Garfield	State: Colorado
Lat: N 39.536 deg. OR N 39 deg. 32 min. 7.865 secs.	Long: W 107.579 deg. OR W -108 deg. 25 min. 14.351 secs.		
Contractor: NABORS 574	Rig/Platform Name/Num: NABORS 574		
Job Purpose: Cement Surface Casing			
Well Type: Development Well	Job Type: Cement Surface Casing		
Sales Person: MAYO, MARK	Srv Supervisor: SLAUGHTER, JESSE	MBU ID Emp #: 454315	

## Job Personnel

HES Emp Name	Exp Hrs	Emp #	HES Emp Name	Exp Hrs	Emp #	HES Emp Name	Exp Hrs	Emp #
DOUT, JACOB J	6.5	430298	KUKUS, CHRISTOPHER A	6.5	413952	PRUETT, BRADLEY A	6.5	475748
ROMKEE, DALE Alan	6.5	488215	SLAUGHTER, JESSE Dean	6.5	454315			

## Equipment

HES Unit #	Distance-1 way	HES Unit #	Distance-1 way	HES Unit #	Distance-1 way	HES Unit #	Distance-1 way
10297346	60 mile	10567589C	60 mile	10784080	60 mile	10804579	60 mile
10995027	60 mile	11027039	60 mile	11583931	60 mile		

## Job Hours

Date	On Location Hours	Operating Hours	Date	On Location Hours	Operating Hours	Date	On Location Hours	Operating Hours
12-30-2011	3	0	12-31-2011	3.5	3			

TOTAL Total is the sum of each column separately

## Job

Formation Name	Top	Bottom	Called Out	Date	Time	Time Zone
Formation Depth (MD)			On Location	30 - Dec - 2011	16:00	MST
Form Type	BHST		Job Started	31 - Dec - 2011	01:07	MST
Job depth MD	1290. ft	Job Depth TVD	Job Completed	31 - Dec - 2011	20:00	MST
Water Depth		Wk Ht Above Floor	Departed Loc	31 - Dec - 2011	03:30	MST
Perforation Depth (MD)	From	To				

## Well Data

Description	New / Used	Max pressure psig	Size in	ID in	Weight lbm/ft	Thread	Grade	Top MD ft	Bottom MD ft	Top TVD ft	Bottom TVD ft
OPEN HOLE				13.5				.	1305.		
SURFACE CASING	Unknown		9.625	9.001	32.3			.	1290.		

## Sales/Rental/3<sup>rd</sup> Party (HES)

Description	Qty	Qty uom	Depth	Supplier
PLUG,CMTG,TOP,9 5/8,HWE,8.16 MIN/9.06 MA	1	EA		

## Tools and Accessories

Type	Size	Qty	Make	Depth	Type	Size	Qty	Make	Depth	Type	Size	Qty	Make
Guide Shoe					Packer					Top Plug	9.625	1	HES
Float Shoe					Bridge Plug					Bottom Plug			
Float Collar					Retainer					SSR plug set			
Insert Float										Plug Container	9.625	1	HES
Stage Tool										Centralizers			

## Miscellaneous Materials

Gelling Agt	Conc	Surfactant	Conc	Acid Type	Qty	Conc	%
Treatment Fld	Conc	Inhibitor	Conc	Sand Type	Size	Qty	

## Fluid Data

Stage/Plug #: 1

Fluid #	Stage Type	Fluid Name	Qty	Qty uom	Mixing Density lbm/gal	Yield ft <sup>3</sup> /sk	Mix Fluid Gal/sk	Rate bbl/min	Total Mix Fluid Gal/sk
1	Water Spacer	FRESH WATER	20.00	bbl	8.33	.0	.0	4	
2	Lead Cement	VERSACEM (TM) SYSTEM (452010)	190.0	sacks	12.3	2.38	13.75	8	13.75
	13.75 Gal	FRESH WATER							
3	Tail Cement	VERSACEM (TM) SYSTEM (452010)	160.0	sacks	12.8	2.11	11.75	8	11.75
	11.75 Gal	FRESH WATER							
4	Displacement Fluid	FRESH WATER	98.3	bbl	8.33	.0	.0	10	
<b>Calculated Values</b>		<b>Pressures</b>		<b>Volumes</b>					
Displacement	98.3	Shut In: Instant		Lost Returns	NO	Cement Slurry	140.7	Pad	
Top Of Cement	SURFACE	5 Min		Cement Returns	28	Actual Displacement	98.3	Treatment	
Frac Gradient		15 Min		Spacers	20	Load and Breakdown		Total Job	259
<b>Rates</b>									
Circulating		Mixing	8	Displacement	10	Avg. Job	9.5		
Cement Left In Pipe	Amount	41.1 ft	Reason	Shoe Joint					
Frac Ring # 1 @	ID	Frac ring # 2 @	ID	Frac Ring # 3 @	ID	Frac Ring # 4 @	ID		
The Information Stated Herein Is Correct				Customer Representative Signature					



*The Road to Excellence Starts with Safety*

Sold To #: 300721	Ship To #: 2896805	Quote #:	Sales Order #: 9133480
Customer: WILLIAMS PRODUCTION RMT INC - EBUS	Customer Rep: Mulherin, Seth		
Well Name: KP	Well #: 31-17	API/UWI #: 05-045-21135	
Field: KOKOPELLI	City (SAP): SILT	County/Parish: Garfield	State: Colorado
Legal Description:			
Lat: N 39.536 deg. OR N 39 deg. 32 min. 7.865 secs.		Long: W 107.579 deg. OR W -108 deg. 25 min. 14.351 secs.	
Contractor: NABORS 574	Rig/Platform Name/Num: NABORS 574		
Job Purpose: Cement Surface Casing	Ticket Amount:		
Well Type: Development Well	Job Type: Cement Surface Casing		
Sales Person: MAYO, MARK	Srv Supervisor: SLAUGHTER, JESSE	MBU ID Emp #: 454315	

Activity Description	Date/Time	Cht #	Rate bbl/ min	Volume bbl		Pressure psig		Comments
				Stage	Total	Tubing	Casing	
Call Out	12/30/2011 16:00							TD 1305 FT, TP 1290 FT, SHOE 41.15 FT, CSG 9 5/8 IN 32.3 LB/FT, HOLE 13 1/2 IN, MUD WT 9.8 PPG
Pre-Convoy Safety Meeting	12/30/2011 18:20							WITH ALL HES PERSONNEL
Crew Leave Yard	12/30/2011 18:30							
Arrive At Loc	12/30/2011 21:00							RIG WAS RUNNING CASING UPON HES ARRIVAL
Assessment Of Location Safety Meeting	12/30/2011 23:00							WITH ALL HES PERSONNEL
Other	12/30/2011 23:10							SPOT EQUIPMENT
Pre-Rig Up Safety Meeting	12/30/2011 23:20							WITH ALL HES PERSONNEL
Rig-Up Equipment	12/30/2011 23:30							
Pre-Job Safety Meeting	12/31/2011 01:00							WITH ALL PERSONNEL ON LOCATION
Start Job	12/31/2011 01:07							
Other	12/31/2011 01:08		2	2			42.0	FILL LINES WITH FRESH WATER
Test Lines	12/31/2011 01:09							TESTED LINES TO 3100 PSI PRESSURE HOLDING
Pump Spacer 1	12/31/2011 01:14		4	20			120.0	FRESH WATER
Pump Lead Cement	12/31/2011 01:23		8	80.5			375.0	190 SKS AT 12.8 PPG, 2.38 FT3/SK, 13.75 GAL/SK
Activity Description	Date/Time	Cht	Rate bbl/ min	Volume bbl		Pressure psig		Comments

Sold To #: 300721

Ship To #: 2896805

Quote #:

Sales Order #:

9133480

SUMMIT Version: 7.2.27

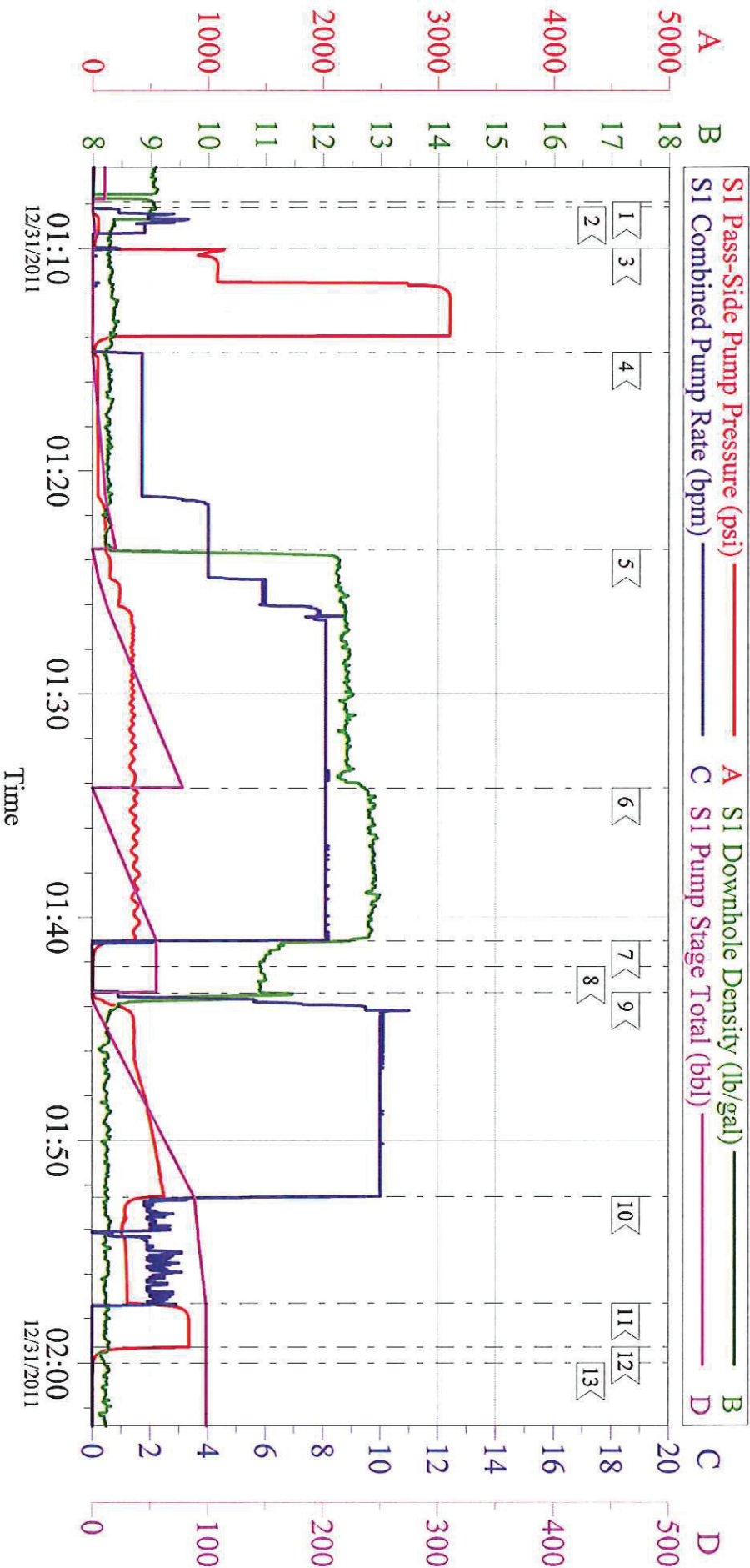
Monday, January 02, 2012 08:36:00

## Cementing Job Log

		#		Stage	Total	Tubing	Casing	
Pump Tail Cement	12/31/2011 01:34		8	60.1			350.0	160 SKS AT 12.8 PPG, 2.11 FT3/SK, 11.75 GAL/SK
Shutdown	12/31/2011 01:41							
Drop Top Plug	12/31/2011 01:42							PLUG LAUNCHED
Pump Displacement	12/31/2011 01:43		10	88.3			640.0	FRESH WATER
Slow Rate	12/31/2011 01:52		2	10			320.0	SLOW RATE 10 BBLS PRIOR TO CALCULATED DISPLACEMENT
Bump Plug	12/31/2011 01:57		2		98.3		841.0	PLUG BUMPED
Check Floats	12/31/2011 01:59							FLOATS HOLDING. HES RETURNED 1 BBL H2O TO PUMP
End Job	12/31/2011 02:00							PIPE WAS STATIC DURING JOB, GOOD CIRCULATION THROUGHOUT JOB, HES RETURNED 28 BBLS CEMENT TO SURFACE
Pre-Rig Down Safety Meeting	12/31/2011 02:05							WITH ALL HES PERSONNEL
Rig-Down Equipment	12/31/2011 02:10							
Pre-Convoy Safety Meeting	12/31/2011 03:20							WITH ALL HES PERSONNEL
Crew Leave Location	12/31/2011 03:30							
Comment	12/31/2011 03:31							THANK YOU FOR USING HALLIBURTON CEMENT DEPARTMENT. JESSE SLAUGHTER AND CREW.



# WILLIAMS KP 31-17 9 5/8 SURFACE



## Local Event Log

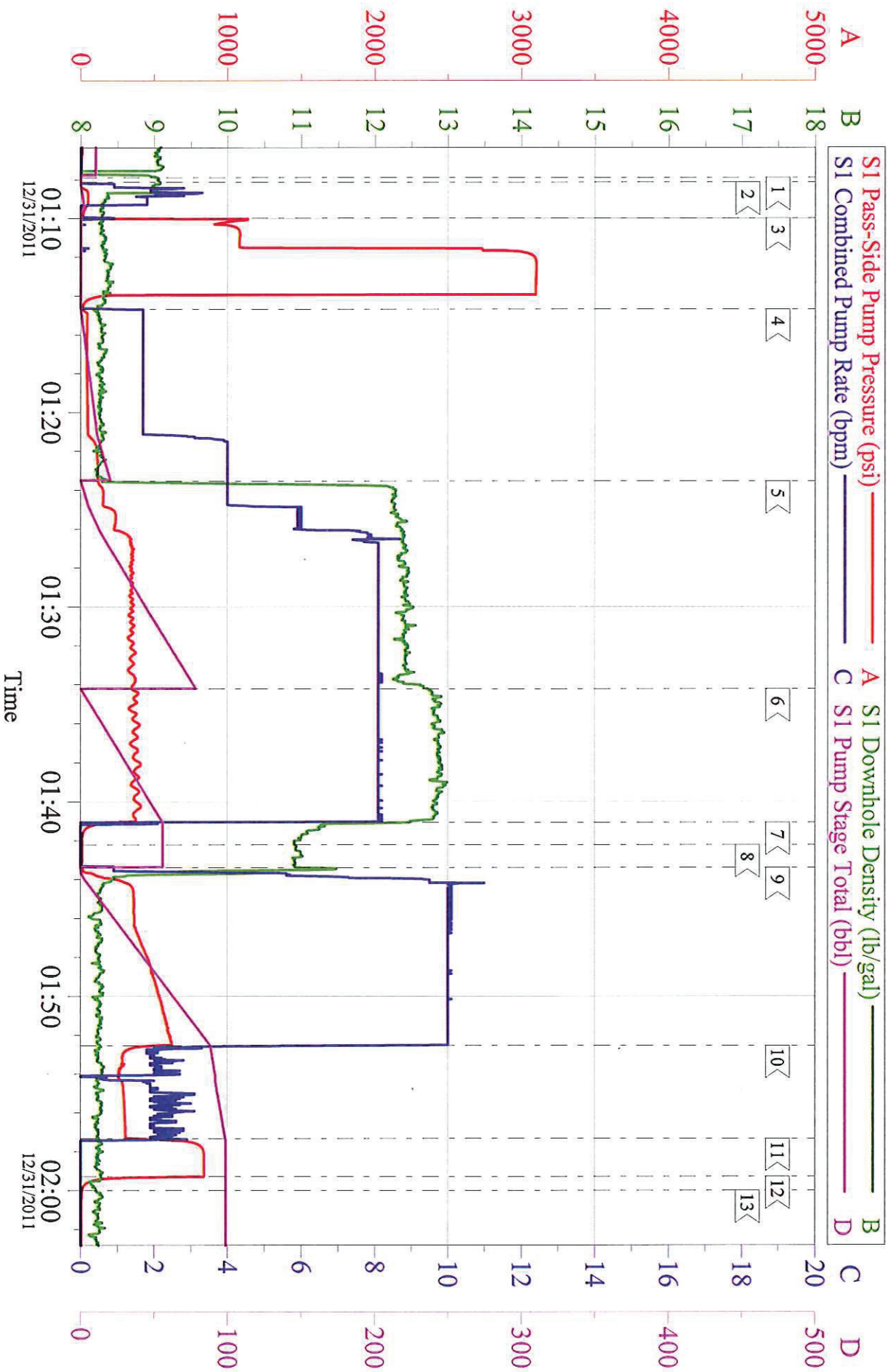
1 <	START JOB	01:07:54	2 <	FILL LINES	01:08:09	3 <	TEST LINES	01:09:59
4 <	PUMP H2O SPACER	01:14:42	5 <	PUMP LEAD CMT	01:23:32	6 <	PUMP TAIL CMT	01:34:13
7 <	SHUTDOWN	01:41:04	8 <	DROP PLUG	01:42:13	9 <	PUMP DISPLACEMENT	01:43:23
10 <	SLOW RATE	01:52:32	11 <	BUMP PLUG	01:57:19	12 <	CHECK FLOATS	01:59:17
13 <	END JOB	02:00:00						

Customer: WILLIAMS	Job Date: 30-Dec-2011	Sales Order #: 9133480
Well Description: KP 31-17	Job Type: SURFACE	ADC Used: YES
Customer Rep: SETH MULHERIN	Cement Supervisor: JESSE SLAUGHTER	Elite #3: JACOB DOUT

OptiCem v6.4.10  
31-Dec-11 02:15

# WILLIAMS KP 31-17

## 9 5/8 SURFACE



Customer: WILLIAMS  
 Well Description: KP 31-17  
 Customer Rep: SETH MULHERIN

Job Date: 30-Dec-2011  
 Job Type: SURFACE  
 Cement Supervisor: JESSE SLAUGHTER

Sales Order #: 9133480  
 ADC Used: YES  
 Elite #: JACOB DOUT

OptiCem v6.4.10  
 31-Dec-11 02:15