
WPX ENERGY ROCKY MOUNTAIN LLC-EBUS

**KP 21-17
KOKOPELLI
Garfield County , Colorado**

Cement Surface Casing **17-Feb-2012**

Post Job Summary

The Road to Excellence Starts with Safety

Sold To #: 300721	Ship To #: 2907782	Quote #:	Sales Order #: 9220735
Customer: WPX ENERGY ROCKY MOUNTAIN LLC-EBUS	Customer Rep: Hutson, Matt		
Well Name: KP	Well #: 21-17	API/UWI #: 05-045-20983	
Field: KOKOPELLI	City (SAP): SILT	County/Parish: Garfield	State: Colorado
Lat: N 39.536 deg. OR N 39 deg. 32 min. 7.984 secs.	Long: W 107.58 deg. OR W -108 deg. 25 min. 12.846 secs.		
Contractor: NABORS	Rig/Platform Name/Num: NABORS 574		
Job Purpose: Cement Surface Casing			
Well Type: Development Well	Job Type: Cement Surface Casing		
Sales Person: SCOTT, KYLE	Srv Supervisor: SMITH, DUSTIN	MBU ID Emp #: 418015	

Job Personnel

HES Emp Name	Exp Hrs	Emp #	HES Emp Name	Exp Hrs	Emp #	HES Emp Name	Exp Hrs	Emp #
HYDE, DUSTIN	4	453940	KUKUS, CHRISTOPHER A	4	413952	LINN, ANDREW	4	479143
SMITH, DUSTIN Michael	4	418015						

Equipment

HES Unit #	Distance-1 way	HES Unit #	Distance-1 way	HES Unit #	Distance-1 way	HES Unit #	Distance-1 way
10297346	60 mile	10867423	60 mile	10871245	60 mile	10897887	60 mile
11071559	60 mile	11259883	60 mile	11808831	60 mile		

Job Hours

Date	On Location Hours	Operating Hours	Date	On Location Hours	Operating Hours	Date	On Location Hours	Operating Hours
2/16/12	1.5	1	2/17/12	2.5	1.5			
TOTAL	4	2.5	Total is the sum of each column separately					

Job

Formation Name	Top	Bottom	Called Out	Date	Time	Time Zone
Formation Depth (MD)			On Location	16 - Feb - 2012	18:30	MST
Form Type		BHST	Job Started	16 - Feb - 2012	22:30	MST
Job depth MD	1265. ft	Job Depth TVD	Job Completed	16 - Feb - 2012	23:43	MST
Water Depth		Wk Ht Above Floor	Departed Loc	17 - Feb - 2012	00:35	MST
Perforation Depth (MD)	From	To		17 - Feb - 2012	02:30	MST

Well Data

Description	New / Used	Max pressure psig	Size in	ID in	Weight lbm/ft	Thread	Grade	Top MD ft	Bottom MD ft	Top TVD ft	Bottom TVD ft
-------------	------------	-------------------	---------	-------	---------------	--------	-------	-----------	--------------	------------	---------------

Sales/Rental/3rd Party (HES)

Description	Qty	Qty uom	Depth	Supplier
PLUG,CMTG,TOP,9 5/8,HWE,8.16 MIN/9.06 MA	1	EA		

Tools and Accessories

Type	Size	Qty	Make	Depth	Type	Size	Qty	Make	Depth	Type	Size	Qty	Make
Guide Shoe					Packer					Top Plug	9 5/8	1	HES
Float Shoe					Bridge Plug					Bottom Plug			
Float Collar					Retainer					SSR plug set			
Insert Float										Plug Container	9 5/8	1	HES
Stage Tool										Centralizers			

Miscellaneous Materials

Gelling Agt	Conc	Surfactant	Conc	Acid Type	Qty	Conc	%
Treatment Fld	Conc	Inhibitor	Conc	Sand Type	Size		Qty

Fluid Data

Stage/Plug #: 1	Fluid #	Stage Type	Fluid Name	Qty	Qty uom	Mixing Density lbm/gal	Yield ft3/sk	Mix Fluid Gal/sk	Rate bbl/min	Total Mix Fluid Gal/sk
-----------------	---------	------------	------------	-----	---------	------------------------	--------------	------------------	--------------	------------------------

Stage/Plug #: 1									
Fluid #	Stage Type	Fluid Name	Qty	Qty uom	Mixing Density lbm/gal	Yield ft ³ /sk	Mix Fluid Gal/sk	Rate bbl/min	Total Mix Fluid Gal/sk
1	Fresh Water		20.00	bbl	8.33	.0	.0	4.0	
2	Lead Cement	VERSACEM (TM) SYSTEM (452010)	180.0	sacks	12.3	2.38	13.75	7.0	13.75
3	Tail Cement	VERSACEM (TM) SYSTEM (452010)	160.0	sacks	12.8	2.11	11.75	7.0	11.75
11.75 Gal		FRESH WATER							
4	Displacement Fluid		92.9	bbl	8.34	.0	.0	10.0	
Calculated Values		Pressures		Volumes					
Displacement	92.9	Shut In: Instant		Lost Returns	0	Cement Slurry	136.4	Pad	
Top Of Cement	SURFACE	5 Min		Cement Returns	15	Actual Displacement	92.9	Treatment	
Frac Gradient		15 Min		Spacers	20	Load and Breakdown		Total Job	249.3
Rates									
Circulating		Mixing	7	Displacement	10	Avg. Job	8.5		
Cement Left In Pipe	Amount	44.25 ft	Reason	Shoe Joint					
Frac Ring # 1 @	ID	Frac ring # 2 @	ID	Frac Ring # 3 @	ID	Frac Ring # 4 @	ID		
The Information Stated Herein Is Correct				Customer Representative Signature					

The Road to Excellence Starts with Safety

Sold To #: 300721		Ship To #: 2907782		Quote #:		Sales Order #: 9220735	
Customer: WPX ENERGY ROCKY MOUNTAIN LLC-EBUS				Customer Rep: Hutson, Matt			
Well Name: KP			Well #: 21-17			API/UWI #: 05-045-20983	
Field: KOKOPELLI		City (SAP): SILT		County/Parish: Garfield			State: Colorado
Legal Description:							
Lat: N 39.536 deg. OR N 39 deg. 32 min. 7.984 secs.				Long: W 107.58 deg. OR W -108 deg. 25 min. 12.846 secs.			
Contractor: NABORS			Rig/Platform Name/Num: NABORS 574				
Job Purpose: Cement Surface Casing						Ticket Amount:	
Well Type: Development Well			Job Type: Cement Surface Casing				
Sales Person: SCOTT, KYLE			Srvc Supervisor: SMITH, DUSTIN			MBU ID Emp #: 418015	

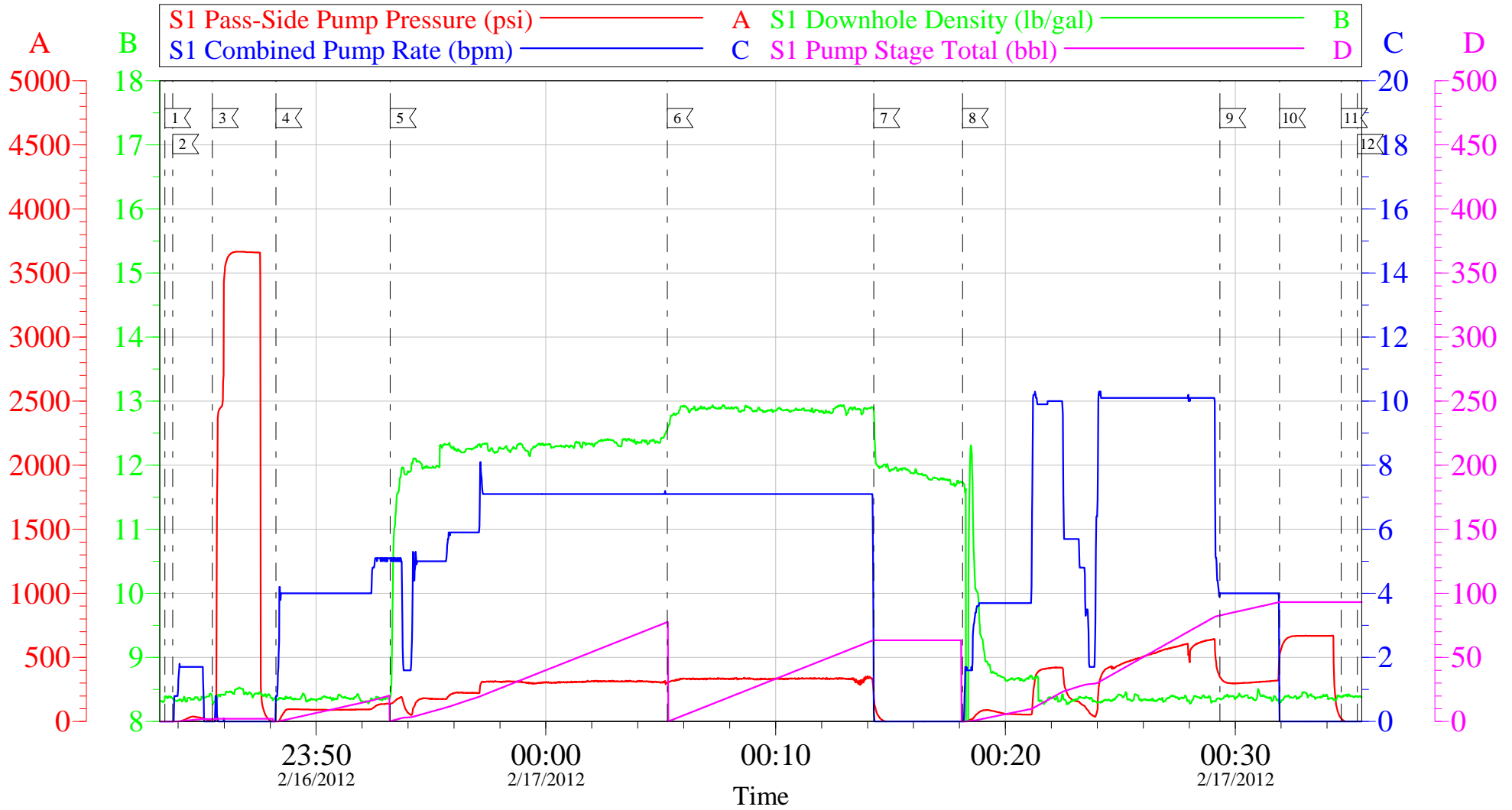
Activity Description	Date/Time	Cht #	Rate bbl/min	Volume bbl		Pressure psig		Comments
				Stage	Total	Tubing	Casing	
Call Out	02/16/2012 18:30							ELITE # 8
Depart Yard Safety Meeting	02/16/2012 20:30							ALL HES EMPLOYEES
Arrive At Loc	02/16/2012 22:30							REQUESTED ON LOCATION TIME WAS 2030 ARRIVED ON LOCATION @ 2230 STARTED CHARGING TIME THEN RIG ON BOTTOM CIRCULATING
Assessment Of Location Safety Meeting	02/16/2012 22:35							ALL HES EMPLOYEES
Pre-Rig Up Safety Meeting	02/16/2012 22:35							ALL HES EMPLOYEES
Rig-Up Equipment	02/16/2012 22:45							1 F-550 PICKUP 1 HT-400 PUMP TRUCK 2 660 BULK TRUCKS
Pre-Job Safety Meeting	02/16/2012 23:30							ALL HES EMPLOYEES AND RIG CREW
Rig-Up Completed	02/16/2012 23:43							RIG CIRCULATED FOR 2 HOURS PRIOR TO JOB
Start Job	02/16/2012 23:43							TD:1265 TP: 1225 SJ: 44.25 9 5/8 32.3# CSG 13 1/2 OH MUD WT: 9.7 PPG
Test Lines	02/16/2012 23:45					3680.0		PRESSURE TEST OK
Pump Spacer	02/16/2012 23:48		4	20	20		155.0	FRESH WATER
Activity Description	Date/Time	Cht #	Rate bbl/min	Volume bbl		Pressure psig		Comments
				Stage	Total	Tubing	Casing	

Pump Lead Cement	02/16/2012 23:53		7	76.3	76.3		330.0	180 SKS 12.3 PPG 2.38 YIELD 13.75 GAL/SK LEAD CEMENT WEIGHT VERIFIED VIA MUD SCALES THROUGHOUT LEAD CEMENT
Pump Tail Cement	02/17/2012 00:05		7	60.1	60.1		350.0	160 SKS 12.8 2.11 YIELD 11.75 GAL/SK TAIL CEMENT WEIGHT VERIFIED VIA MUD SCALES THROUGHOUT TAIL CEMENT
Shutdown	02/17/2012 00:14							
Drop Plug	02/17/2012 00:14							PLUG AWAY NO PROBLEMS WASHED UP ON TOP OF PLUG AS PER COMPANY REP
Pump Displacement	02/17/2012 00:18		10	92.9	92.9		656.0	FRESH WATER HAD TO SLOW RATE AT BEGINNING OF DISPLACEMENT DUE TO NOT BEING ABLE TO PULL WATER FROM TRANSPORT RESOLVED ISSUE AND BROUGHT RATE BACK UP
Slow Rate	02/17/2012 00:29		4	82	82		340.0	SLOW RATE TO BUMP PLUG
Bump Plug	02/17/2012 00:31		4	92.9	92.2		680.0	PSI BEFORE BUMPING PLUG @ 340 BUMPED PLUG UP TO 680
Check Floats	02/17/2012 00:34							FLOATS HELD 1/2 BBL BACK TO DISPLACEMENT TANKS
End Job	02/17/2012 00:35							GOOD CIRCULATION THROUGHOUT JOB NO PIPE MOVEMENT DURING JOB 15 BBLS CEMENT TO SURFACE
Pre-Rig Down Safety Meeting	02/17/2012 00:45							ALL HES EMPLOYEES
Rig-Down Equipment	02/17/2012 01:00							
Pre-Convoy Safety Meeting	02/17/2012 02:20							ALL HES EMPLOYEES
Activity Description	Date/Time	Cht	Rate bbl/ min	Volume bbl	Pressure psig			Comments

		#		Stage	Total	Tubing	Casing	
Crew Leave Location	02/17/2012 02:30							THANK YOU FOR USING HALLIBURTON CEMENT DUSTIN SMITH AND CREW

WPX KP 21-17

9 5/8 SURFACE



Local Event Log

1 START JOB	2/16/2012 23:43:25	2 FILL LINES	2/16/2012 23:43:45	3 TEST LINES	2/16/2012 23:45:29
4 PUMP H2O SPACER	2/16/2012 23:48:15	5 PUMP LEAD CEMENT	2/16/2012 23:53:13	6 PUMP TAIL CEMENT	2/17/2012 00:05:17
7 SHUTDOWN/ DROP PLUG	2/17/2012 00:14:16	8 PUMP DISPLACEMENT	2/17/2012 00:18:08	9 SLOW RATE	2/17/2012 00:29:20
10 BUMP PLUG	2/17/2012 00:31:56	11 CHECK FLOATS	2/17/2012 00:34:37	12 END JOB	2/17/2012 00:35:19

Customer: WPX
Well Description: KP 21-17
Company Rep: MATT HUTSON

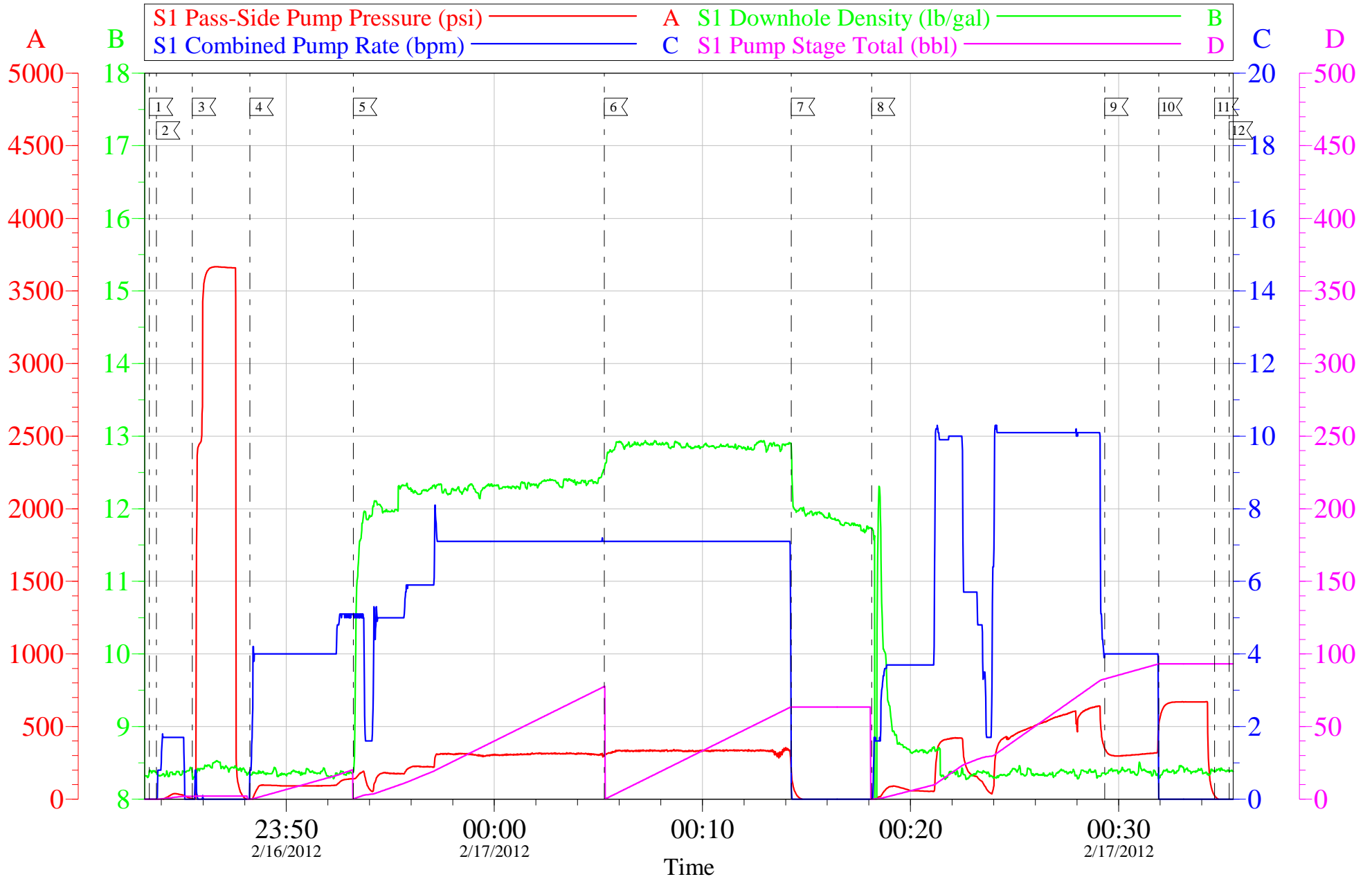
Job Date: 16-Feb-2012
Job Type: 9 5/8 SURFACE
Cement Supervisor: DUSTIN SMITH

Sales Order #: 9220735
ADC Used: YES
Elite #: 8 CHRIS KUKUS

OptiCem v6.4.10
17-Feb-12 00:45

WPX KP 21-17

9 5/8 SURFACE



Customer: WPX
Well Description: KP 21-17
Company Rep: MATT HUTSON

Job Date: 16-Feb-2012
Job Type: 9 5/8 SURFACE
Cement Supervisor: DUSTIN SMITH

Sales Order #: 9220735
ADC Used: YES
Elite #: 8 CHRIS KUKUS

OptiCem v6.4.10
17-Feb-12 00:45

HALLIBURTON

Water Analysis Report

Company: WPX
Submitted by: DUSTIN SMITH
Attention: J. TROUT/C.MARTINEZ
Lease: KP
Well #: 21-17

Date: 2/16/2012
Date Rec.: 2/16/2012
S.O.#: 9220735
Job Type: SURFACE

Specific Gravity	<i>MAX</i>	<i>1</i>
pH	<i>8</i>	<i>6.8</i>
Potassium (K)	<i>5000</i>	<i>0</i> Mg / L
Calcium (Ca)	<i>500</i>	<i>120</i> Mg / L
Iron (FE2)	<i>300</i>	<i>0</i> Mg / L
Chlorides (Cl)	<i>3000</i>	<i>0</i> Mg / L
Sulfates (SO ₄)	<i>1500</i>	<i>UNDER 200</i> Mg / L
Chlorine (Cl ₂)		<i>0</i> Mg / L
Temp	<i>40-80</i>	<i>50</i> Deg
Total Dissolved Solids		<i>560</i> Mg / L

Respectfully: DUSTIN SMITH

Title: CEMENTING SUPERVISOR

Location: Grand Junction, CO

NOTICE:

This report is limited to the described sample tested. Any person using or relying on this report agrees that Halliburton shall not be liable for any loss or damage whether due to act or omission resulting from such report c

Sales Order #: 9220735	Line Item: 10	Survey Conducted Date: 2/17/2012
Customer: WPX ENERGY ROCKY MOUNTAIN LLC-EBUS		Job Type (BOM): CMT SURFACE CASING BOM
Customer Representative: MATT HUTSON		API / UWI: (leave blank if unknown) 05-045-20983
Well Name: KP		Well Number: 21-17
Well Type: Development Well	Well Country: United States of America	
H2S Present:	Well State: Colorado	Well County: Garfield

Dear Customer,

We hope that you were satisfied with the service quality of this job performed by Halliburton. It is the aim of our management and service personnel to deliver equipment and service of a standard unmatched in the service sector of the energy industry.

Please take the time to let us know if our performance met with your satisfaction. Please be as critical as possible to ensure we constantly improve our service. Your comments are of great value to us and are intended for the exclusive use of Halliburton.

CUSTOMER SATISFACTION SURVEY

CATEGORY	CUSTOMER SATISFACTION RESPONSE	
Survey Conducted Date	The date the survey was conducted	2/17/2012
Survey Interviewer	The survey interviewer is the person who initiated the survey.	DUSTIN SMITH (HX37079)
Customer Participation	Did the customer participate in this survey? (Y/N)	Yes
Customer Representative	Enter the Customer representative name	MATT HUTSON
HSE	Was our HSE performance satisfactory? Circle Y or N	Yes
Equipment	Were you satisfied with our Equipment? Circle Y or N	Yes
Personnel	Were you satisfied with our people? Circle Y or N	Yes
Customer Comment	Customer's Comment	

CUSTOMER SIGNATURE

Sales Order #: 9220735	Line Item: 10	Survey Conducted Date: 2/17/2012
Customer: WPX ENERGY ROCKY MOUNTAIN LLC-EBUS		Job Type (BOM): CMT SURFACE CASING BOM
Customer Representative: MATT HUTSON		API / UWI: (leave blank if unknown) 05-045-20983
Well Name: KP		Well Number: 21-17
Well Type: Development Well	Well Country: United States of America	
H2S Present:	Well State: Colorado	Well County: Garfield

KEY PERFORMANCE INDICATORS

General	
Survey Conducted Date The date the survey was conducted	2/17/2012

Cementing KPI Survey	
Type of Job Select the type of job. (Cementing or Non-Cementing)	0
Select the Maximum Deviation range for this Job What is the highest deviation for the job you just completed? This may not be the maximum well deviation.	Vertical
Total Operating Time (hours) Total Operating Hours Including Rig-up, Pumping, Rig-down. Enter in decimal format.	2.5
HSE Incident, Accident, Injury HSE Incident, Accident, Injury. This should be recordable incidents only.	No
Was the job purpose achieved? Was the job delivered correctly as per customer agreed design?	Yes
Operating Hours (Pumping Hours) Total number of hours pumping fluid on this job. Enter in decimal format.	1
Customer Non-Productive Rig Time (hrs) Lost time due to Halliburton in the start, execution, or completion of an ordered service or product, or delays in a follow-on service. Enter in decimal format. 0 if none.	0
Type of Rig Classification Job Was Performed Type Of Rig (classification) Job Was Performed On	Drilling Rig (Portable)
Number Of JSAs Performed Number Of Jsas Performed	6
Number of Unplanned Shutdowns Unplanned shutdown is when injection stops for any period of time.	0
Was this a Primary Cement Job (Yes / No)	Yes

Sales Order #: 9220735	Line Item: 10	Survey Conducted Date: 2/17/2012
Customer: WPX ENERGY ROCKY MOUNTAIN LLC-EBUS		Job Type (BOM): CMT SURFACE CASING BOM
Customer Representative: MATT HUTSON		API / UWI: (leave blank if unknown) 05-045-20983
Well Name: KP		Well Number: 21-17
Well Type: Development Well	Well Country: United States of America	
H2S Present:	Well State: Colorado	Well County: Garfield

Primary Cement Job= Casing job, Liner job, or Tie-back job.	
Did We Run Wiper Plugs? Did We Run Top And Bottom Casing Wiper Plugs?	Top
Mixing Density of Job Stayed in Designed Density Range (0-100%) Density Range defined as +/- .20 ppg. Calculation: Total BBLs cement mixed at designed density divided by total BBLs of cement multiplied by 100	90
Was Automated Density Control Used? Was Automated Density Control (ADC) Used ?	Yes
Pump Rate (percent) of Job Stayed At Designed Pump Rate Pump Rate range defined as +/- 1bbl/min. Calculation: Total BBLs of fluid pumped at the designed rate divided by Total BBLs of fluid pumped, multiplied by 100	90
Nbr of Remedial Sqz Jobs Rqd - Competition Number Of Remedial Squeeze Jobs Required After Primary Job Performed By Competition	0
Nbr of Remedial Plug Jobs Rqd - HES Number Of Remedial Plug Jobs Needed After Primary Plug Pumped By HES	0
Nbr of Remedial Sqz Jobs Rqd - HES Number Of Remedial Squeeze Jobs Required After Primary Job Performed By HES	0