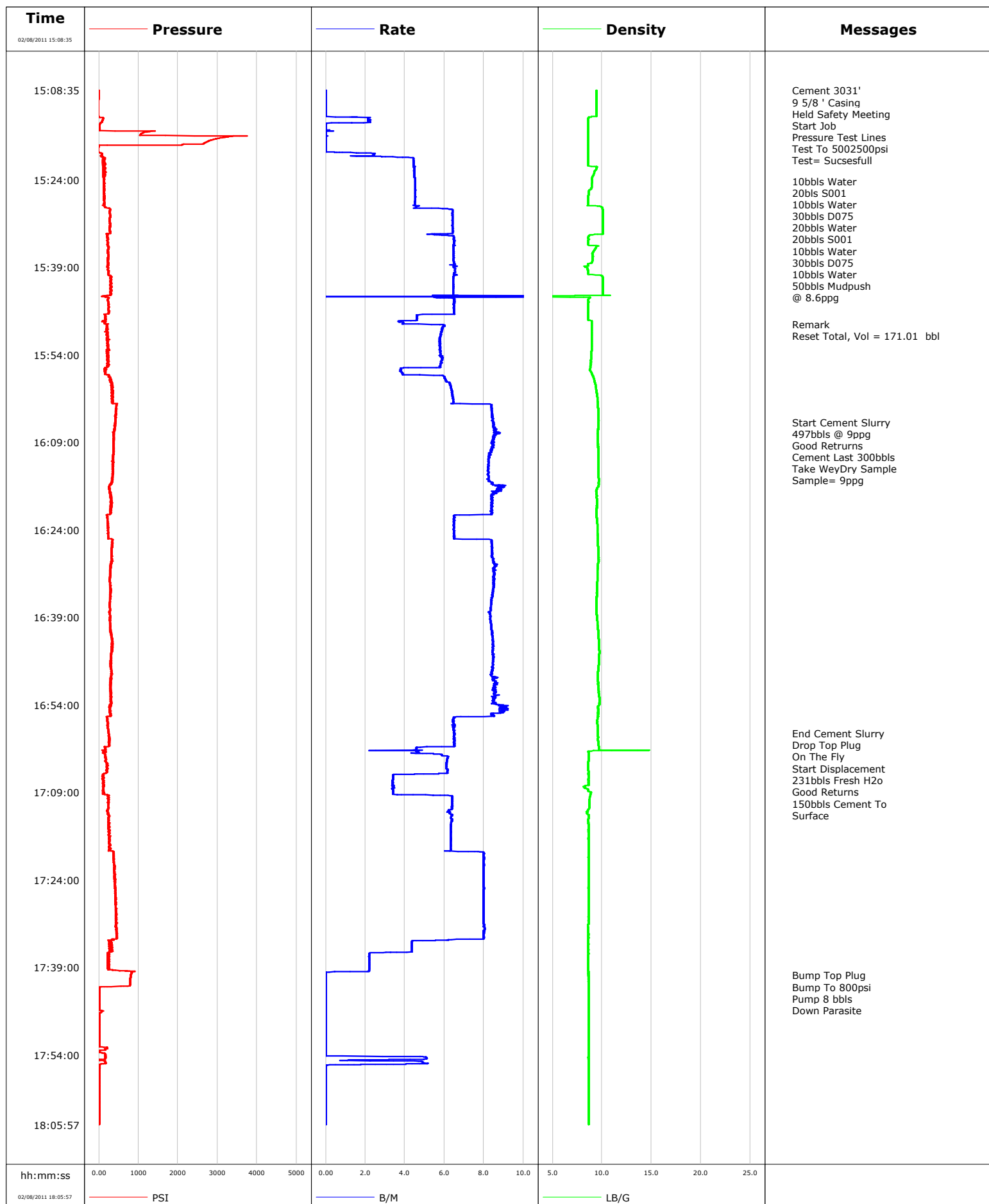


Well	SGU 8515D-24	Client	ENCANA
Field	N PARACHUTE	SIR No.	BJ90-00149
Engineer		Job Type	SURFACE
Country	United States	Job Date	02-08-2011





Cementing Service Report

				Customer ENCANA		Job Number BJ90-00149		
Well SGU 8515D-24			Location (legal) N PARACHUTE		Schlumberger Location GJCO		Job Start Feb/08/2011	
Field N PARACHUTE		Formation Name/Type		Deviation	Bit Size 14.8 in	Well MD		Well TVD
County GARFEILD		State/Province Colorado		BHP	BHST	BHCT	Pore Press. Gradient	
Well Master 0631238404		API/UWI						
Rig Name PATTERSON 306	Drilled For Gas	Service Via Land	Casing/Liner					
			Depth,	Size,	Weight,	Grade	Thread	
Offshore Zone	Well Class New	Well Type Development						
Drilling Fluid Type		Max. Density	Plastic Viscosity	Tubing/Drill Pipe				
				Depth,	Size,	Weight,	Grade	Thread
Service Line Cementing	Job Type SURFACE							
Max. Allowed Tubing Press	Max. Allowed Ann. Press	WellHead Connection Single Cement head	Perforations/Open Hole					
			Top,	Bottom,		No. of Shots	Total Interval	
Service Instructions 2 ZONELOCK PILLS 50bbls Mudpush 987sks 9 ppg litecrete 30% excess 231bbls Fresh H2O cemnet last 300 bbls								
			Treat Down Casing	Displacement 231.0 bbl	Packer Type	Packer Depth		
			Tubing Vol.	Casing Vol. 234.0 bbl	Annular Vol. 368.0 bbl	Openhole Vol. 602.0 bbl		
Casing/Tubing Secured <input type="checkbox"/>	1 Hole Volume Circulated prior to Cement <input type="checkbox"/>		Casing Tools			Squeeze Job		
Lift Pressure			Shoe Type			Squeeze Type		
Pipe Rotated <input type="checkbox"/>		Pipe Reciprocated <input type="checkbox"/>	Shoe Depth			Tool Type		
No. Centralizers		Top Plugs	Bottom Plugs	Stage Tool Type			Tool Depth	
Cement Head Type			Stage Tool Depth			Tail Pipe Size		
Job Scheduled For Feb/08/2011		Arrived on Location Feb/08/2011	Leave Location Feb/08/2011	Collar Type			Tail Pipe Depth	
			Collar Depth			Sqz. Total Vol.		
Date	Time 24-hr clock	Treating Pressure PSI	Flow Rate B/M	Density LB/G	Volume BBL	Message		
02/08/2011	14:23:17					Started Acquisition		
02/08/2011	15:08:35					Cement 3031'		
02/08/2011	15:08:35					9 5/8 ' Casing		
02/08/2011	15:08:35					Held Safety Meeting		
02/08/2011	15:08:35	-3	0.0	9.43	0.0			
02/08/2011	15:08:37					Start Job		
02/08/2011	15:08:37	-3	0.0	9.43	0.0			
02/08/2011	15:08:38					Pressure Test Lines		
02/08/2011	15:08:38	-3	0.0	9.43	0.0			
02/08/2011	15:08:39					Test To 500&2500psi		
02/08/2011	15:08:39					Test= Sucsesfull		
02/08/2011	15:08:39	-3	0.0	9.43	0.0			
02/08/2011	15:09:17	-3	0.0	9.43	0.0			
02/08/2011	15:11:17	-17	0.0	9.43	0.0			
02/08/2011	15:13:17	90	2.2	8.64	0.2			
02/08/2011	15:15:17	14	0.0	8.60	2.2			
02/08/2011	15:17:17	2787	0.0	8.60	2.2			
02/08/2011	15:19:17	1	0.8	8.60	2.3			
02/08/2011	15:21:17	92	4.4	8.60	9.4			
02/08/2011	15:23:17	120	4.5	9.08	18.4			
02/08/2011	15:24:12					10bbls Water		
02/08/2011	15:24:12					20bls S001		

Well			Field		Job Start	Customer	Job Number
SGU 8515D-24			N PARACHUTE		Feb/08/2011	ENCANA	BJ90-00149
Date	Time 24-hr clock	Treating Pressure PSI	Flow Rate B/M	Density LB/G	Volume BBL	Message	
02/08/2011	15:24:12	128	4.5	8.98	22.5		
02/08/2011	15:24:13					10bbls Water	
02/08/2011	15:24:13					30bbls D075	
02/08/2011	15:24:13					20bbls Water	
02/08/2011	15:24:13					20bbls S001	
02/08/2011	15:24:13					10bbls Water	
02/08/2011	15:24:13	136	4.5	8.98	22.6		
02/08/2011	15:24:14					30bbls D075	
02/08/2011	15:24:14					10bbls Water	
02/08/2011	15:24:14					50bbls Mudpush	
02/08/2011	15:24:14					@ 8.6ppg	
02/08/2011	15:24:14	113	4.5	8.98	22.6		
02/08/2011	15:25:17	114	4.5	8.93	27.4		
02/08/2011	15:27:17	116	4.5	8.60	36.5		
02/08/2011	15:29:17	269	6.4	10.08	46.3		
02/08/2011	15:31:17	276	6.4	10.10	59.1		
02/08/2011	15:33:17	206	5.2	10.09	71.9		
02/08/2011	15:35:17	225	6.5	9.59	84.6		
02/08/2011	15:37:17	224	6.5	9.06	97.6		
02/08/2011	15:39:17	232	6.5	8.50	110.5		
02/08/2011	15:41:17	300	6.4	10.09	123.5		
02/08/2011	15:43:17	306	6.4	10.10	136.4		
02/08/2011	15:45:17	254	6.5	8.60	151.6		
02/08/2011	15:47:17	167	4.6	8.60	164.1		
02/08/2011	15:48:42					Remark	
02/08/2011	15:48:42	228	3.9	8.94	170.2		
02/08/2011	15:48:51					Reset Total, Vol = 171.01 bbl	
02/08/2011	15:48:51	199	6.0	8.94	171.0		
02/08/2011	15:49:17	200	5.9	8.95	173.6		
02/08/2011	15:51:17	210	5.8	8.96	185.3		
02/08/2011	15:53:17	240	5.8	8.92	196.8		
02/08/2011	15:55:17	228	5.9	8.87	208.5		
02/08/2011	15:57:17	157	3.9	8.98	217.9		
02/08/2011	15:59:17	362	6.3	9.34	229.7		
02/08/2011	16:01:17	353	6.4	9.52	242.5		
02/08/2011	16:03:17	440	8.4	9.61	257.1		
02/08/2011	16:05:17	427	8.5	9.65	274.0		
02/08/2011	16:05:27					Start Cement Slurry	
02/08/2011	16:05:27	426	8.4	9.66	275.4		
02/08/2011	16:05:28					497bbls @ 9ppg	
02/08/2011	16:05:28					Good Retruns	
02/08/2011	16:05:28					Cement Last 300bbls	
02/08/2011	16:05:28					Take Wey&Dry Sample	
02/08/2011	16:05:28	426	8.4	9.66	275.5		
02/08/2011	16:06:21					Sample= 9ppg	
02/08/2011	16:06:21	401	8.5	9.63	283.0		
02/08/2011	16:07:17	361	8.5	9.58	291.0		
02/08/2011	16:09:17	371	8.5	9.60	308.0		
02/08/2011	16:11:17	358	8.3	9.62	324.7		
02/08/2011	16:13:17	355	8.2	9.63	341.2		
02/08/2011	16:15:17	347	8.2	9.67	357.6		
02/08/2011	16:17:17	258	8.7	9.42	374.8		
02/08/2011	16:19:17	309	8.4	9.48	391.7		
02/08/2011	16:21:17	291	8.4	9.44	408.5		
02/08/2011	16:23:17	228	6.5	9.53	421.6		

Well			Field		Job Start	Customer	Job Number
SGU 8515D-24			N PARACHUTE		Feb/08/2011	ENCANA	BJ90-00149
Date	Time 24-hr clock	Treating Pressure PSI	Flow Rate B/M	Density LB/G	Volume BBL	Message	
02/08/2011	16:25:17	235	6.5	9.57	434.6		
02/08/2011	16:27:17	320	8.4	9.62	450.9		
02/08/2011	16:29:17	335	8.4	9.66	467.7		
02/08/2011	16:31:17	294	8.5	9.54	484.7		
02/08/2011	16:33:17	286	8.5	9.49	501.7		
02/08/2011	16:35:17	281	8.4	9.47	518.7		
02/08/2011	16:37:17	271	8.3	9.45	535.4		
02/08/2011	16:39:17	287	8.3	9.49	552.0		
02/08/2011	16:41:17	287	8.4	9.61	568.7		
02/08/2011	16:43:17	339	8.5	9.67	585.6		
02/08/2011	16:45:17	295	8.5	9.70	602.5		
02/08/2011	16:47:17	306	8.4	9.66	619.4		
02/08/2011	16:49:17	326	8.7	9.59	636.2		
02/08/2011	16:51:17	296	8.5	9.66	653.3		
02/08/2011	16:53:17	300	8.4	9.73	670.4		
02/08/2011	16:55:17	283	9.0	9.64	688.0		
02/08/2011	16:57:17	232	6.5	9.52	702.4		
02/08/2011	16:58:49					End Cement Slurry	
02/08/2011	16:58:49	239	6.5	9.59	712.3		
02/08/2011	16:58:52					Drop Top Plug	
02/08/2011	16:58:52	245	6.5	9.59	712.7		
02/08/2011	16:58:53					On The Fly	
02/08/2011	16:58:53	244	6.5	9.59	712.8		
02/08/2011	16:59:17	249	6.5	9.60	715.4		
02/08/2011	17:01:17	167	4.6	9.68	728.2		
02/08/2011	17:03:17	169	6.1	8.65	738.6		
02/08/2011	17:04:54					Start Displacement	
02/08/2011	17:04:54	200	6.1	8.63	748.5		
02/08/2011	17:04:55					231bbls Fresh H2o	
02/08/2011	17:04:55					Good Returns	
02/08/2011	17:04:55	234	6.1	8.62	748.6		
02/08/2011	17:04:56					150bbls Cement To	
02/08/2011	17:04:56					Surface	
02/08/2011	17:04:56	219	6.1	8.62	748.7		
02/08/2011	17:05:17	191	6.2	8.63	750.8		
02/08/2011	17:07:17	122	3.4	8.63	759.1		
02/08/2011	17:09:17	120	3.4	8.82	765.9		
02/08/2011	17:11:17	230	6.4	8.71	778.3		
02/08/2011	17:13:17	235	6.3	8.65	790.9		
02/08/2011	17:15:17	251	6.3	8.63	803.6		
02/08/2011	17:17:17	276	6.3	8.63	816.3		
02/08/2011	17:19:17	358	8.0	8.63	829.2		
02/08/2011	17:21:17	379	8.0	8.63	845.2		
02/08/2011	17:23:17	393	8.0	8.63	861.1		
02/08/2011	17:25:17	411	8.0	8.63	877.1		
02/08/2011	17:27:17	411	8.0	8.63	893.1		
02/08/2011	17:29:17	425	8.0	8.63	909.0		
02/08/2011	17:31:17	439	8.0	8.63	925.0		
02/08/2011	17:33:17	459	8.0	8.63	941.0		
02/08/2011	17:35:17	340	4.4	8.63	953.3		
02/08/2011	17:37:17	227	2.2	8.63	960.2		
02/08/2011	17:39:17	247	2.2	8.63	964.5		
02/08/2011	17:40:18					Bump Top Plug	
02/08/2011	17:40:18	809	0.0	8.63	965.5		
02/08/2011	17:40:19					Bump To 800psi	

Well			Field		Job Start	Customer		Job Number
SGU 8515D-24			N PARACHUTE		Feb/08/2011	ENCANA		BJ90-00149
Date	Time 24-hr clock	Treating Pressure PSI	Flow Rate B/M	Density LB/G	Volume BBL	Message		
02/08/2011	17:40:19	809	0.0	8.63	965.5			
02/08/2011	17:41:17	789	0.0	8.63	965.5			
02/08/2011	17:43:17	8	0.0	8.63	965.5			
02/08/2011	17:45:17	8	0.0	8.63	965.5			
02/08/2011	17:47:17	4	0.0	8.63	965.5			
02/08/2011	17:49:17	4	0.0	8.63	965.5			
02/08/2011	17:51:17	4	0.0	8.63	965.5			
02/08/2011	17:53:17	24	0.0	8.63	965.6			
02/08/2011	17:55:17	165	4.9	8.64	970.0			
02/08/2011	17:57:17	3	0.0	8.64	971.7			
02/08/2011	17:59:17	3	0.0	8.64	971.7			
02/08/2011	18:01:17	3	0.0	8.63	971.7			
02/08/2011	18:03:17	4	0.0	8.63	971.7			
02/08/2011	18:05:17	3	0.0	8.63	971.7			
02/08/2011	18:06:01					Pump 8 bbls		
02/08/2011	18:06:01					Down Parasite		

Post Job Summary

Average Pump Rates, bbl/min					Volume of Fluid Injected, bbl			
Slurry 6.8	N2	Mud 0.0	Maximum Rate 25.0		Total Slurry 971.7	Mud 0.0	Spacer 275.3	N2
Treating Pressure Summary, psi					Breakdown Fluid			
Maximum 3752	Final 1	Average 275	Bump Plug to 800	Breakdown	Type		Volume	Density
Avg. N2 Percent		Designed Slurry Volume 497.0 bbl		Displacement 252.9 bbl	Mix Water Temp 55 degF	Cement Circulated to Surface? <input checked="" type="checkbox"/>		Volume 150.0 bbl
						Washed Thru Perfs <input type="checkbox"/>		To
Customer or Authorized Representative ROBERT ESCOJEDA				Schlumberger Supervisor JASON CRICK		Circulation Lost <input type="checkbox"/>		Job Completed <input checked="" type="checkbox"/>
						-		-