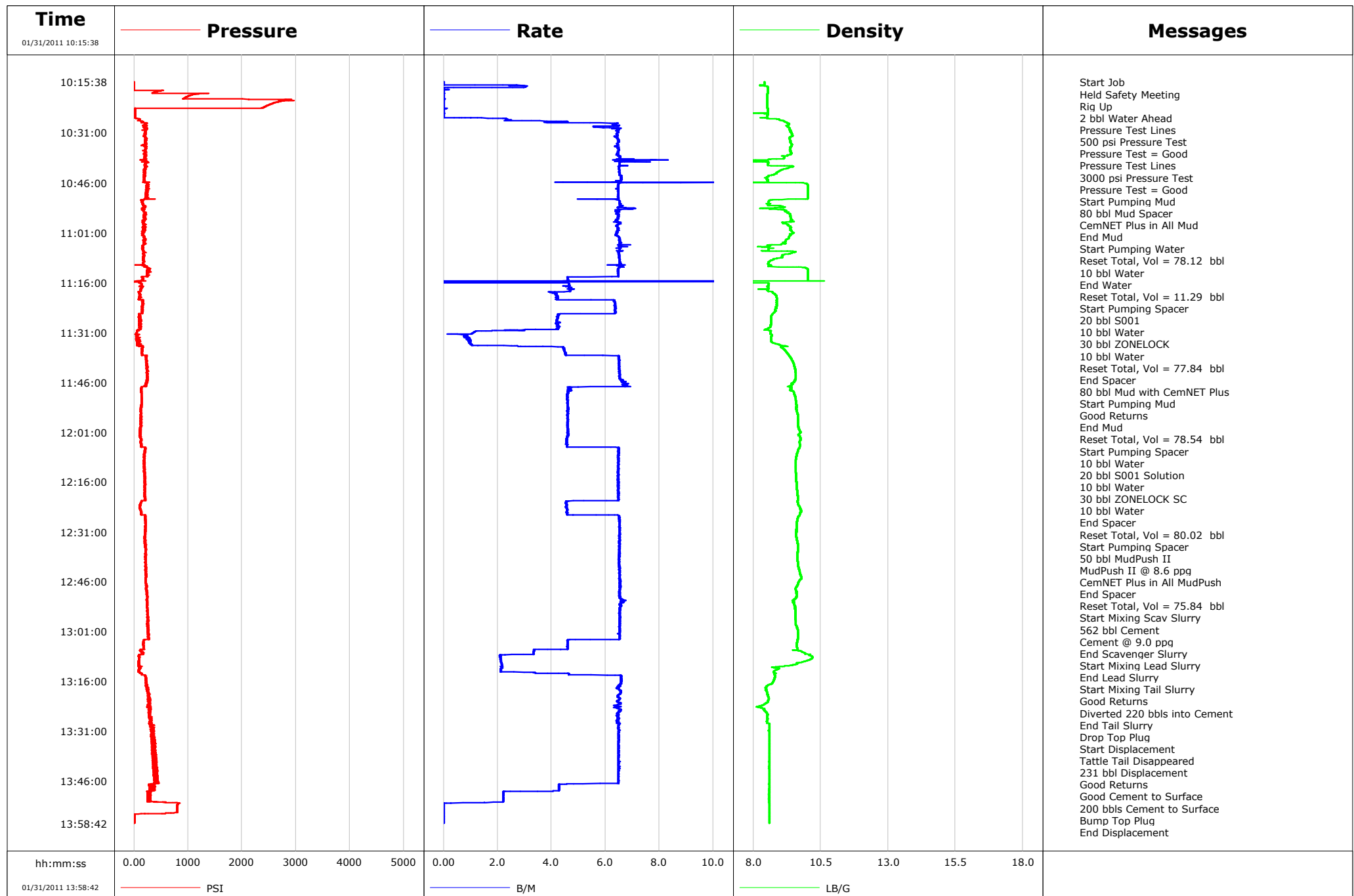


**Well** SGU 8502F-25  
**Field** Story Gulch Unit  
**Engineer** Ryan Bowditch  
**Country** United States

**Client** EnCana  
**SIR No.** BJ90-00147  
**Job Type** 9 5/8" Surface Casing  
**Job Date** 01-31-2011



# Cementing Service Report

				Customer EnCana			Job Number BJ90-00147	
Well SGU 8502F-25			Location (legal) F25		Schlumberger Location Grand Junction, CO		Job Start Jan/31/2011	
Field Story Gulch Unit		Formation Name/Type Shale		Deviation 0 deg	Bit Size 14.8 in	Well MD 3036.0 ft		Well TVD 3036.0 ft
County Garfield		State/Province Colorado		BHP psi	BHST 115 degF	BHCT 95 degF		Pore Press. Gradient lb/gal
Well Master 0631238402		API/UWI						
Rig Name Patterson 306	Drilled For Gas		Service Via Land	Casing/Liner				
	Depth, ft	Size, in	Weight, lb/ft	Grade		Thread		
Offshore Zone	Well Class New		Well Type Development	120.0	20.0	94.0		
	3036.0	9.6	36.0	J55		8RD		
Drilling Fluid Type Bentonite		Max. Density 8.50 lb/gal	Plastic Viscosity cP	Tubing/Drill Pipe				
	T/D	Depth, ft	Size, in	Weight, lb/ft	Grade		Thread	
Service Line Cementing	Job Type 9 5/8" Surface Casing				0.0	0.0		
		0.0	0.0					
Max. Allowed Tub. Press psi	Max. Allowed Ann. Press psi		WH Connection Single Cement head	Perforations/Open Hole				
	Top, ft	Bottom, ft	shot/ft	No. of Shots		Total Interval ft		
	ft	ft				Diameter in		
	ft	ft						
Service Instructions Cement 9 5/8" Surface Casing with: 80 bbl Mud with CemNET+ ZONELOCK SC PIII 80 bbl Mud with CemNET+ ZONELOCK SC PIII 50 bbl 8.6 ppq MudPush II 562 bbl 9.0 ppq LiteCRETE (1127 sks) Displace 231 bbls		Treat Down Casing	Displacement 231.1 bbl		Packer Type		Packer Depth ft	
		Tubing Vol. bbl	Casing Vol. 234.7 bbl		Annular Vol. 386.0 bbl		Openhole Vol. 680.0 bbl	
Casing/Tubing Secured <input checked="" type="checkbox"/>		1 Hole Vol. Circulated prior to Cement <input checked="" type="checkbox"/>		Casing Tools		Squeeze Job		
Lift Pressure 275 psi		Shoe Type Guide		Squeeze Type				
Pipe Rotated <input type="checkbox"/>		Pipe Reciprocated <input type="checkbox"/>		Shoe Depth 3036.0 ft		Tool Type		
No. Centralizers		Top Plugs 1	Bottom Plugs	Stage Tool Type		Tool Depth ft		
Cement Head Type Single		Stage Tool Depth ft		Tail Pipe Size in				
Job Scheduled For Jan/31/2011		Arrived on Location Jan/31/2011		Leave Location Jan/31/2011		Collar Type Float		Tail Pipe Depth ft
				Collar Depth 2989.0 ft		Sqz. Total Vol. bbl		
Date	Time 24-hr clock	Treating Pressure PSI	Flow Rate B/M	Density LB/G	Volume BBL	Message		
01/31/2011	10:15:38	-9	0.0	8.42	0.0	Started Acquisition		
01/31/2011	10:15:39	-9	0.0	8.41	0.0	Held Safety Meeting		
01/31/2011	10:15:40	-9	0.0	8.41	0.0	Rig Up		
01/31/2011	10:17:18	-6	3.0	8.54	2.0			
01/31/2011	10:18:58	347	0.0	8.54	2.2			
01/31/2011	10:19:30	1088	0.0	8.53	2.2	Pressure Test Lines		
01/31/2011	10:19:31	1082	0.0	8.53	2.2	Pressure Test = Good		
01/31/2011	10:20:38	925	0.0	8.53	2.2			
01/31/2011	10:22:00	2589	0.0	8.53	2.2	Pressure Test Lines		
01/31/2011	10:22:01	2585	0.0	8.53	2.2	3000 psi Pressure Test		
01/31/2011	10:22:02	2585	0.0	8.53	2.2	Pressure Test = Good		
01/31/2011	10:22:18	2539	0.0	8.53	2.2			
01/31/2011	10:23:58	15	0.0	8.54	2.2			
01/31/2011	10:25:38	11	0.0	8.53	2.2			
01/31/2011	10:26:34	35	2.0	8.54	2.4	Start Pumping Mud		
01/31/2011	10:26:35	33	2.2	8.53	2.4	80 bbl Mud Spacer		
01/31/2011	10:27:18	77	2.3	9.06	4.1			
01/31/2011	10:28:58	207	6.1	9.28	13.2			
01/31/2011	10:30:38	210	6.5	9.37	23.6			
01/31/2011	10:32:18	206	6.4	9.38	34.3			
01/31/2011	10:33:58	199	6.5	9.39	45.1			

Well			Field		Job Start		Customer		Job Number	
SGU 8502F-25			Story Gulch Unit		Jan/31/2011		EnCana		BJ90-00147	
Date	Time 24-hr clock	Treating Pressure PSI	Flow Rate B/M	Density LB/G	Volume BBL	Message				
01/31/2011	10:37:18	205	6.4	9.39	66.6					
01/31/2011	10:38:57	187	6.5	8.61	77.4	End Mud				
01/31/2011	10:38:58	189	6.5	8.59	77.5					
01/31/2011	10:39:00	191	6.6	8.58	77.7	Start Pumping Water				
01/31/2011	10:39:04	183	6.3	8.56	78.1	Reset Total, Vol = 78.12 bbl				
01/31/2011	10:39:07	120	7.7	7.24	78.5	10 bbl Water				
01/31/2011	10:40:38	197	6.5	8.55	88.5					
01/31/2011	10:40:45	217	6.5	8.55	89.3	End Water				
01/31/2011	10:40:46	212	6.5	8.55	89.4	Reset Total, Vol = 11.29 bbl				
01/31/2011	10:40:50	201	6.8	8.57	89.8	Start Pumping Spacer				
01/31/2011	10:40:54	185	6.6	9.16	90.3	20 bbl S001				
01/31/2011	10:42:18	203	6.5	9.01	99.4					
01/31/2011	10:43:58	179	6.6	8.55	110.2					
01/31/2011	10:45:38	201	6.5	8.55	121.2					
01/31/2011	10:47:18	238	6.5	10.02	132.3					
01/31/2011	10:48:58	250	6.5	10.02	143.1					
01/31/2011	10:50:38	208	6.5	10.02	153.9					
01/31/2011	10:52:18	154	6.5	8.63	164.6					
01/31/2011	10:52:36	181	6.5	8.54	166.6	10 bbl Water				
01/31/2011	10:52:39	183	6.5	8.55	166.9	10 bbl Water				
01/31/2011	10:52:42	164	6.5	8.55	167.2	Reset Total, Vol = 77.84 bbl				
01/31/2011	10:52:46	176	6.5	8.55	167.7	End Spacer				
01/31/2011	10:53:26	189	6.5	9.05	172.0	80 bbl Mud with CemNET Plus				
01/31/2011	10:53:32	165	6.7	8.83	172.7	Start Pumping Mud				
01/31/2011	10:53:58	170	6.7	8.84	175.7					
01/31/2011	10:55:38	172	6.5	9.35	186.5					
01/31/2011	10:57:18	156	6.4	9.44	197.2					
01/31/2011	10:58:48	179	6.4	9.29	206.9	Good Returns				
01/31/2011	10:58:58	173	6.4	9.34	208.0					
01/31/2011	11:00:38	140	6.4	9.43	218.8					
01/31/2011	11:02:18	189	6.5	9.32	229.5					
01/31/2011	11:03:58	186	6.6	9.09	240.3					
01/31/2011	11:04:46	169	6.6	8.53	245.6	End Mud				
01/31/2011	11:04:48	166	6.6	8.52	245.8	Reset Total, Vol = 78.54 bbl				
01/31/2011	11:05:04	152	6.5	8.60	247.5	Start Pumping Spacer				
01/31/2011	11:05:17	147	6.5	8.27	249.0	10 bbl Water				
01/31/2011	11:05:29	159	6.5	8.56	250.3	10 bbl Water				
01/31/2011	11:05:38	177	6.4	8.56	251.2					
01/31/2011	11:05:45	169	6.5	8.59	252.0	10 bbl Water				
01/31/2011	11:07:18	171	6.5	9.37	262.1					
01/31/2011	11:08:58	176	6.5	8.75	272.9					
01/31/2011	11:10:38	178	6.5	8.56	283.8					
01/31/2011	11:12:18	292	6.5	10.02	294.6					
01/31/2011	11:13:58	237	6.5	10.02	305.4					
01/31/2011	11:15:38	-20	0.0	2.91	313.5					
01/31/2011	11:17:18	146	4.7	8.53	320.0					
01/31/2011	11:18:29	124	4.7	8.55	325.6	End Spacer				
01/31/2011	11:18:32	120	4.7	8.55	325.8	Reset Total, Vol = 80.02 bbl				
01/31/2011	11:18:43	102	4.7	8.65	326.7	Start Pumping Spacer				
01/31/2011	11:18:45	96	4.5	8.69	326.8	50 bbl MudPush II				
01/31/2011	11:18:58	92	4.0	8.71	327.7					
01/31/2011	11:19:15	110	4.2	8.75	328.8	CemNET Plus in All MudPush				
01/31/2011	11:20:38	96	4.2	8.88	334.6					
01/31/2011	11:22:18	164	6.3	8.87	344.0					

Well			Field		Job Start		Customer		Job Number	
SGU 8502F-25			Story Gulch Unit		Jan/31/2011		EnCana		BJ90-00147	
Date	Time 24-hr clock	Treating Pressure PSI	Flow Rate B/M	Density LB/G	Volume BBL	Message				
01/31/2011	11:25:38	101	4.3	8.70	364.7					
01/31/2011	11:27:18	106	4.2	8.66	371.8					
01/31/2011	11:28:58	91	4.2	8.64	378.8					
01/31/2011	11:30:38	53	1.2	8.65	385.0					
01/31/2011	11:32:18	58	0.9	8.67	386.6					
01/31/2011	11:33:58	54	1.0	8.69	388.1					
01/31/2011	11:35:38	151	4.4	9.06	391.5					
01/31/2011	11:37:18	140	4.5	9.26	399.0					
01/31/2011	11:37:51	147	4.5	9.32	401.5	End Spacer				
01/31/2011	11:37:53	139	4.5	9.32	401.6	Reset Total, Vol = 75.84 bbl				
01/31/2011	11:37:56	140	4.5	9.32	401.9	Start Mixing Scav Slurry				
01/31/2011	11:38:03	211	6.5	9.34	402.6	562 bbl Cement				
01/31/2011	11:38:04	214	6.5	9.34	402.7	Cement @ 9.0 ppg				
01/31/2011	11:38:58	228	6.5	9.41	408.5					
01/31/2011	11:40:38	241	6.5	9.50	419.3					
01/31/2011	11:42:18	239	6.5	9.56	430.2					
01/31/2011	11:43:58	234	6.5	9.57	441.0					
01/31/2011	11:45:35	249	6.6	9.54	451.6	End Scavenger Slurry				
01/31/2011	11:45:36	249	6.6	9.54	451.7	Start Mixing Lead Slurry				
01/31/2011	11:45:37	252	6.7	9.53	451.8	Start Mixing Tail Slurry				
01/31/2011	11:45:38	247	6.6	9.52	451.9					
01/31/2011	11:47:18	226	6.8	9.36	463.1					
01/31/2011	11:48:58	134	4.6	9.50	471.0					
01/31/2011	11:50:38	133	4.6	9.56	478.7					
01/31/2011	11:52:18	140	4.6	9.60	486.3					
01/31/2011	11:52:53	134	4.6	9.61	489.0	Good Returns				
01/31/2011	11:53:58	120	4.6	9.60	494.0					
01/31/2011	11:55:38	129	4.6	9.64	501.7					
01/31/2011	11:57:18	126	4.6	9.66	509.3					
01/31/2011	11:58:58	126	4.6	9.67	517.0					
01/31/2011	12:00:38	112	4.6	9.72	524.6					
01/31/2011	12:02:18	116	4.6	9.74	532.3					
01/31/2011	12:03:58	120	4.5	9.72	539.9					
01/31/2011	12:05:38	204	6.5	9.71	547.7					
01/31/2011	12:07:18	201	6.5	9.63	558.5					
01/31/2011	12:08:58	189	6.5	9.59	569.3					
01/31/2011	12:10:38	187	6.5	9.58	580.1					
01/31/2011	12:12:18	199	6.5	9.57	590.9					
01/31/2011	12:13:58	186	6.5	9.59	601.7					
01/31/2011	12:15:38	198	6.5	9.60	612.5					
01/31/2011	12:17:18	195	6.5	9.61	623.2					
01/31/2011	12:18:55	197	6.5	9.63	633.7	Diverted 220 bbls into Cement				
01/31/2011	12:18:58	199	6.5	9.63	634.0					
01/31/2011	12:20:38	204	6.5	9.64	644.8					
01/31/2011	12:22:18	124	4.6	9.65	654.4					
01/31/2011	12:23:58	112	4.6	9.74	662.0					
01/31/2011	12:25:38	129	4.6	9.74	669.6					
01/31/2011	12:27:18	208	6.5	9.63	679.8					
01/31/2011	12:28:58	209	6.5	9.61	690.7					
01/31/2011	12:30:38	209	6.5	9.60	701.5					
01/31/2011	12:32:18	196	6.5	9.60	712.4					
01/31/2011	12:33:58	209	6.5	9.63	723.2					
01/31/2011	12:35:38	216	6.5	9.66	734.1					
01/31/2011	12:37:18	204	6.5	9.64	744.9					

Well			Field		Job Start	Customer		Job Number
SGU 8502F-25			Story Gulch Unit		Jan/31/2011	EnCana		BJ90-00147
Date	Time 24-hr clock	Treating Pressure PSI	Flow Rate B/M	Density LB/G	Volume BBL	Message		
01/31/2011	12:40:38	218	6.5	9.66	766.6			
01/31/2011	12:42:18	216	6.5	9.70	777.5			
01/31/2011	12:43:58	211	6.5	9.75	788.3			
01/31/2011	12:45:38	209	6.5	9.72	799.2			
01/31/2011	12:47:18	227	6.5	9.63	810.1			
01/31/2011	12:48:58	230	6.5	9.61	821.0			
01/31/2011	12:50:38	249	6.5	9.60	831.8			
01/31/2011	12:52:18	241	6.7	9.47	842.8			
01/31/2011	12:53:58	241	6.5	9.55	853.7			
01/31/2011	12:55:38	254	6.5	9.56	864.6			
01/31/2011	12:57:18	243	6.5	9.57	875.5			
01/31/2011	12:58:58	262	6.5	9.58	886.3			
01/31/2011	13:00:38	255	6.5	9.65	897.2			
01/31/2011	13:02:18	262	6.5	9.66	908.1			
01/31/2011	13:03:58	168	4.6	9.63	917.9			
01/31/2011	13:05:00	167	4.6	9.61	922.6	End Tail Slurry		
01/31/2011	13:05:38	168	4.6	9.62	925.6			
01/31/2011	13:07:18	171	3.3	9.84	932.1			
01/31/2011	13:08:58	87	2.1	10.19	936.4			
01/31/2011	13:10:38	93	2.2	9.64	939.9			
01/31/2011	13:12:18	118	2.1	8.93	943.5			
01/31/2011	13:13:58	145	4.6	8.78	948.6			
01/31/2011	13:15:00	221	6.6	8.79	955.2	Drop Top Plug		
01/31/2011	13:15:01	214	6.6	8.79	955.3	Start Displacement		
01/31/2011	13:15:03	217	6.6	8.78	955.5	231 bbl Displacement		
01/31/2011	13:15:05	217	6.6	8.78	955.7	Good Returns		
01/31/2011	13:15:38	227	6.6	8.76	959.3			
01/31/2011	13:17:18	240	6.5	8.53	970.3			
01/31/2011	13:18:58	250	6.5	8.49	981.1			
01/31/2011	13:20:38	263	6.5	8.56	992.0			
01/31/2011	13:22:06	273	6.5	8.54	1001.5	Good Cement to Surface		
01/31/2011	13:22:18	281	6.5	8.52	1002.8			
01/31/2011	13:23:58	298	6.5	8.35	1013.5			
01/31/2011	13:25:38	288	6.5	8.50	1024.4			
01/31/2011	13:27:18	302	6.5	8.54	1035.1			
01/31/2011	13:28:58	302	6.5	8.60	1045.9			
01/31/2011	13:30:38	370	6.5	8.59	1056.7			
01/31/2011	13:32:18	340	6.5	8.60	1067.5			
01/31/2011	13:33:58	377	6.5	8.59	1078.3			
01/31/2011	13:35:38	352	6.5	8.59	1089.1			
01/31/2011	13:37:18	338	6.5	8.59	1099.9			
01/31/2011	13:38:58	348	6.5	8.59	1110.7			
01/31/2011	13:40:38	357	6.5	8.59	1121.5			
01/31/2011	13:42:18	360	6.5	8.59	1132.3			
01/31/2011	13:43:58	403	6.5	8.59	1143.1			
01/31/2011	13:45:38	432	6.5	8.59	1153.9			
01/31/2011	13:47:18	278	4.3	8.59	1163.6			
01/31/2011	13:48:58	289	4.3	8.59	1170.7			
01/31/2011	13:50:38	294	2.2	8.59	1174.6			
01/31/2011	13:52:18	419	2.2	8.59	1178.3			
01/31/2011	13:52:51	814	0.0	8.59	1178.7	Bump Top Plug		
01/31/2011	13:52:52	811	0.0	8.59	1178.7	End Displacement		
01/31/2011	13:52:53	808	0.0	8.59	1178.7	FCP = 275 psi		
01/31/2011	13:53:58	797	0.0	8.59	1178.7			

Well			Field		Job Start	Customer		Job Number
SGU 8502F-25			Story Gulch Unit		Jan/31/2011	EnCana		BJ90-00147
Date	Time 24-hr clock	Treating Pressure PSI	Flow Rate B/M	Density LB/G	Volume BBL	Message		
01/31/2011	13:56:02	2	0.0	8.59	1178.7	Bled Off Pressure		
01/31/2011	13:56:14	3	0.0	8.59	1178.7	Floats Held		
01/31/2011	13:57:14	3	0.0	8.59	1178.7	200 bbl Cement to Surface		

### Post Job Summary

Average Pump Rates, bbl/min					Volume of Fluid Injected, bbl						
Slurry 5.6	N2	Mud 6.3	Maximum Rate 25.0		Total Slurry 562.0	Mud 160.0	Spacer 160.0	N2			
Treating Pressure Summary, psi					Breakdown Fluid						
Maximum 2967	Final 4	Average 246	Bump Plug to 900	Breakdown	Type	Volume bbl		Density lb/gal			
Avg. N2 Percent %	Designed Slurry Volume 562.0 bbl		Displacement 231.0 bbl	Mix Water Temp 60 degF	Cement Circulated to Surface? <input checked="" type="checkbox"/>		Volume 200.0 bbl				
					Washed Thru Perfs <input type="checkbox"/>		To ft				
Customer or Authorized Representative Mike Quintana			Schlumberger Supervisor Ryan Bowditch			Circulation Lost <input type="checkbox"/>	Job Completed <input type="checkbox"/>				
						-	-				