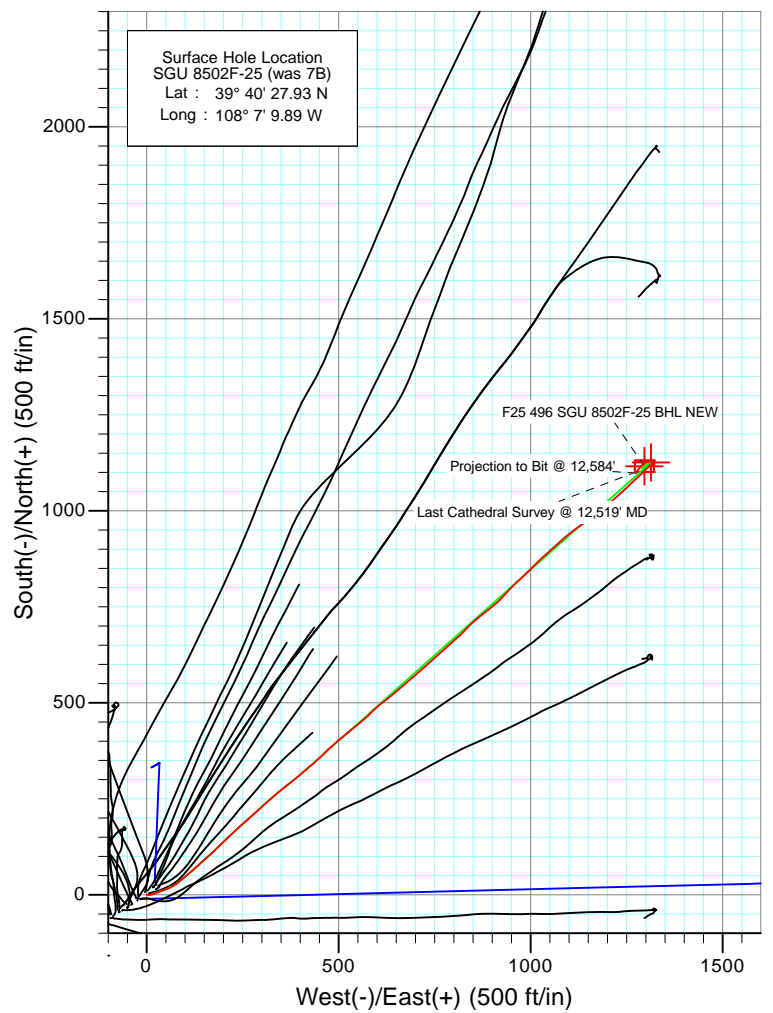
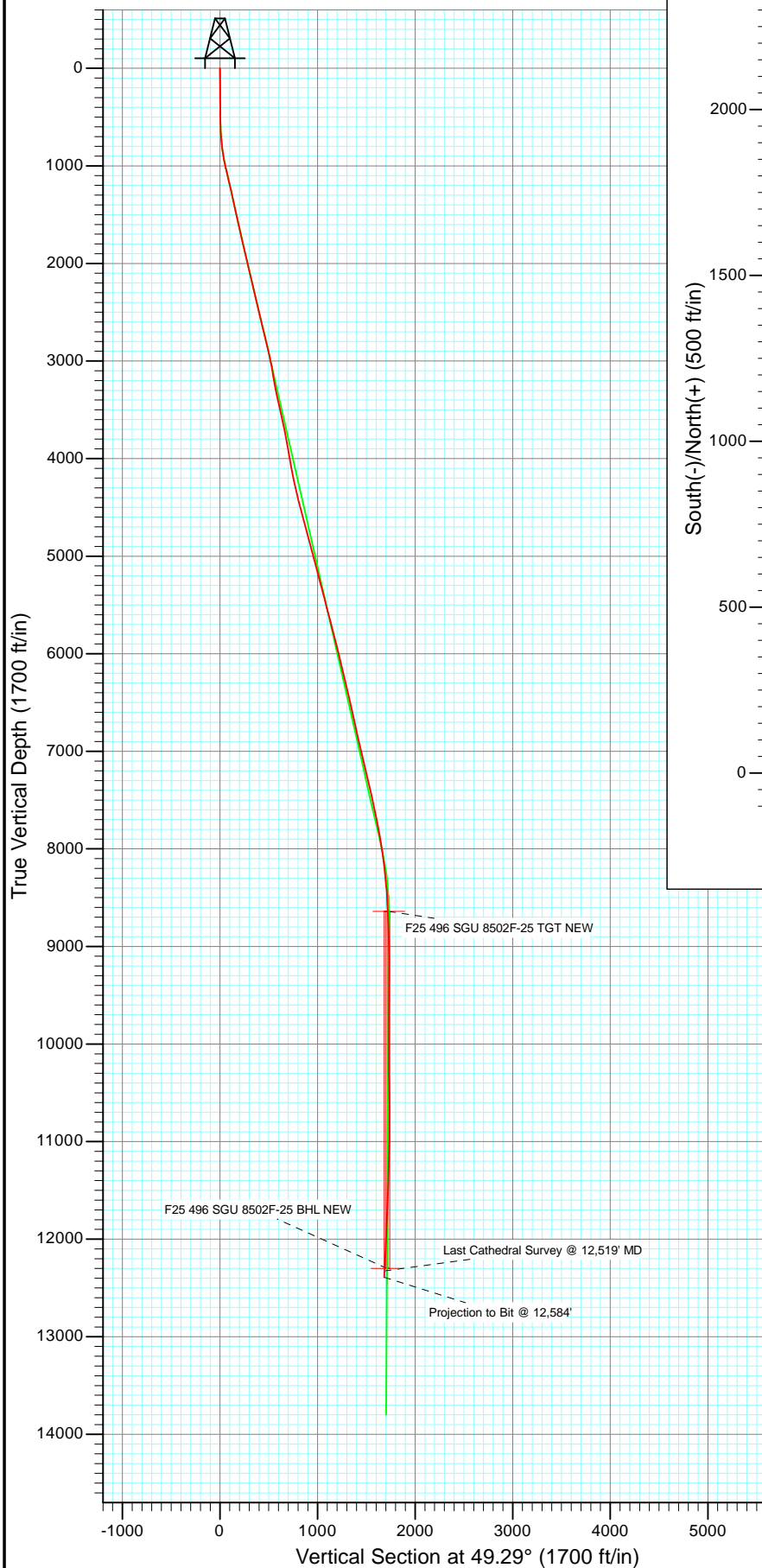




Project: Story Gulch
 Site: F25 496
 Well: SGU 8502F-25 (was 7B)
 Wellbore: DD
 Design: FINAL



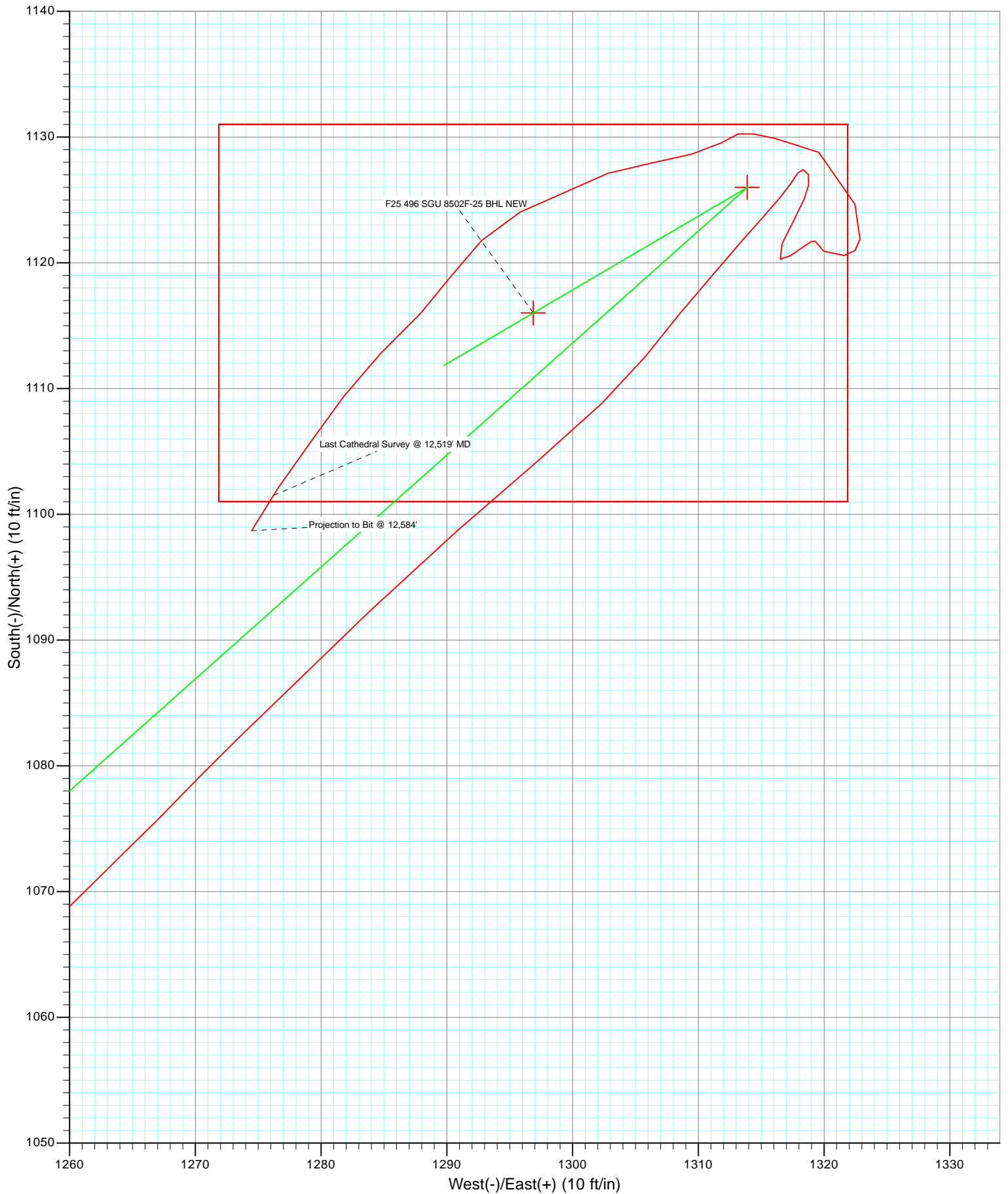
Azimuths to True North
 Magnetic North: 10.43°

Magnetic Field
 Strength: 52309.8snT
 Dip Angle: 65.86°
 Date: 6/24/2011
 Model: IGRF2010

Type		Target		Azimuth	Origin	N/S	E/W	From TVD
Target		F25 496 SGU 8502F-25 BHL NEW		49.29	Slot	0.0	0.0	0.0
Name		F25 496 SGU 8502F-25 TGT NEW		TV				
		F25 496 SGU 8502F-25 BHL NEW		12300.0				
				+N/-S	+E/-W	Latitude	Longitude	
				1126.0	1313.9	39° 40' 39.06 N	108° 6' 53.09 W	
				1116.0	1296.9	39° 40' 38.96 N	108° 6' 53.31 W	



Project: Story Gulch
Site: F25 496
Well: SGU 8502F-25 (was 7B)
Wellbore: DD
Design: FINAL



Survey Report

Company:	EnCana Oil & Gas (USA) Inc	Local Co-ordinate Reference:	Well SGU 8502F-25 (was 7B)
Project:	Story Gulch	TVD Reference:	KBE @ 8320.0ft (Patterson 306)
Site:	F25 496	MD Reference:	KBE @ 8320.0ft (Patterson 306)
Well:	SGU 8502F-25 (was 7B)	North Reference:	True
Wellbore:	DD	Survey Calculation Method:	Minimum Curvature
Design:	DD	Database:	USA EDM 5000 Multi Users DB

Project	Story Gulch		
Map System:	US State Plane 1983	System Datum:	Mean Sea Level
Geo Datum:	North American Datum 1983		
Map Zone:	Colorado Central Zone		

Site	F25 496			
Site Position:		Northing:	1,681,091.06 ft	Latitude: 39° 40' 27.10 N
From:	Lat/Long	Easting:	2,262,632.54 ft	Longitude: 108° 7' 11.76 W
Position Uncertainty:	0.0 ft	Slot Radius:	13.200 in	Grid Convergence: -1.65 °

Well	SGU 8502F-25 (was 7B)			
Well Position	+N/-S	0.0 ft	Northing:	1,681,170.89 ft
	+E/-W	0.0 ft	Easting:	2,262,780.63 ft
Position Uncertainty	0.0 ft		Wellhead Elevation:	ft
			Ground Level:	8,298.0 ft

Wellbore	DD				
Magnetics	Model Name	Sample Date	Declination (°)	Dip Angle (°)	Field Strength (nT)
	IGRF2010	6/24/2011	10.43	65.86	52,310

Design	DD			
Audit Notes:				
Version:	1.0	Phase:	ACTUAL	Tie On Depth: 0.0
Vertical Section:	Depth From (TVD)	+N/-S	+E/-W	Direction
	(ft)	(ft)	(ft)	(°)
	0.0	0.0	0.0	49.29

Survey Program	Date	7/6/2011		
From (ft)	To (ft)	Survey (Wellbore)	Tool Name	Description
221.0	2,985.0	Survey #1 (DD)	MWD	Geolink MWD
3,082.0	12,584.0	Survey #2 (DD)	MWD	Geolink MWD

Survey									
Measured Depth (ft)	Inclination (°)	Azimuth (°)	Vertical Depth (ft)	+N/-S (ft)	+E/-W (ft)	Vertical Section (ft)	Dogleg Rate (°/100ft)	Build Rate (°/100ft)	Formations / Comments
0.0	0.00	0.00	0.0	0.0	0.0	0.0	0.00	0.00	
221.0	0.40	58.40	221.0	0.4	0.7	0.8	0.18	0.18	
252.0	0.80	89.90	252.0	0.5	1.0	1.0	1.63	1.29	
313.0	0.90	97.10	313.0	0.4	1.9	1.7	0.24	0.16	
405.0	1.00	113.30	405.0	0.0	3.3	2.5	0.31	0.11	
497.0	0.80	122.10	497.0	-0.7	4.6	3.1	0.26	-0.22	
589.0	1.90	79.00	588.9	-0.7	6.6	4.6	1.55	1.20	
682.0	4.20	73.50	681.8	0.5	11.4	9.0	2.49	2.47	
777.0	6.70	72.50	776.4	3.2	20.0	17.3	2.63	2.63	
872.0	9.70	68.60	870.4	7.8	32.8	29.9	3.21	3.16	
967.0	12.30	70.50	963.6	14.1	49.8	46.9	2.76	2.74	
1,062.0	12.90	59.30	1,056.4	22.9	68.4	66.8	2.64	0.63	

Survey Report

Company:	EnCana Oil & Gas (USA) Inc	Local Co-ordinate Reference:	Well SGU 8502F-25 (was 7B)
Project:	Story Gulch	TVD Reference:	KBE @ 8320.0ft (Patterson 306)
Site:	F25 496	MD Reference:	KBE @ 8320.0ft (Patterson 306)
Well:	SGU 8502F-25 (was 7B)	North Reference:	True
Wellbore:	DD	Survey Calculation Method:	Minimum Curvature
Design:	DD	Database:	USA EDM 5000 Multi Users DB

Survey

Measured Depth (ft)	Inclination (°)	Azimuth (°)	Vertical Depth (ft)	+N/-S (ft)	+E/-W (ft)	Vertical Section (ft)	Dogleg Rate (°/100ft)	Build Rate (°/100ft)	Formations / Comments
1,158.0	13.60	50.60	1,149.8	35.5	86.4	88.6	2.20	0.73	
1,254.0	13.00	49.60	1,243.2	49.7	103.3	110.7	0.67	-0.62	
1,345.0	12.50	48.80	1,332.0	62.8	118.5	130.8	0.58	-0.55	
1,440.0	11.50	47.70	1,424.9	75.9	133.3	150.6	1.08	-1.05	
1,536.0	12.80	48.70	1,518.8	89.4	148.3	170.8	1.37	1.35	
1,630.0	13.80	47.10	1,610.2	103.9	164.4	192.4	1.13	1.06	
1,724.0	12.80	46.30	1,701.7	118.7	180.1	214.0	1.08	-1.06	
1,820.0	12.80	46.00	1,795.3	133.5	195.4	235.2	0.07	0.00	
1,915.0	12.60	46.10	1,888.0	148.0	210.5	256.1	0.21	-0.21	
2,010.0	13.10	47.80	1,980.6	162.4	225.9	277.2	0.66	0.53	
2,105.0	13.90	48.40	2,073.0	177.2	242.4	299.3	0.85	0.84	
2,201.0	13.30	47.60	2,166.3	192.3	259.2	321.9	0.65	-0.62	
2,296.0	13.10	48.40	2,258.8	206.8	275.3	343.6	0.29	-0.21	
2,391.0	13.00	48.00	2,351.3	221.1	291.3	365.0	0.14	-0.11	
2,486.0	13.20	47.70	2,443.9	235.6	307.3	386.6	0.22	0.21	
2,581.0	13.50	48.10	2,536.3	250.3	323.6	408.5	0.33	0.32	
2,676.0	13.20	49.40	2,628.7	264.7	340.1	430.4	0.45	-0.32	
2,771.0	13.60	52.60	2,721.2	278.6	357.2	452.4	0.89	0.42	
2,867.0	13.90	52.10	2,814.4	292.5	375.2	475.2	0.34	0.31	
2,985.0	13.10	49.70	2,929.1	309.9	396.6	502.7	0.83	-0.68	Last Cathedral svy @ 2985' MD
3,082.0	11.10	48.90	3,024.0	323.1	412.0	523.1	2.07	-2.06	
3,173.0	9.10	48.00	3,113.6	333.7	424.0	539.0	2.20	-2.20	
3,265.0	9.50	50.20	3,204.4	343.4	435.2	553.9	0.58	0.43	
3,356.0	11.40	50.00	3,293.8	354.0	447.9	570.4	2.09	2.09	
3,447.0	12.50	44.50	3,382.9	366.8	461.7	589.2	1.74	1.21	
3,539.0	13.10	47.10	3,472.6	381.0	476.3	609.5	0.90	0.65	
3,630.0	12.70	48.10	3,561.3	394.7	491.3	629.8	0.50	-0.44	
3,722.0	12.00	48.50	3,651.2	407.8	506.0	649.5	0.77	-0.76	
3,814.0	10.50	50.70	3,741.4	419.4	519.6	667.5	1.70	-1.63	
3,905.0	10.40	52.20	3,830.9	429.7	532.5	684.0	0.32	-0.11	
3,997.0	10.60	52.40	3,921.3	440.0	545.8	700.7	0.22	0.22	
4,088.0	8.70	49.70	4,011.0	449.5	557.7	715.9	2.15	-2.09	
4,180.0	10.20	48.90	4,101.8	459.4	569.1	731.0	1.64	1.63	
4,272.0	12.20	43.90	4,192.0	471.8	582.0	748.9	2.41	2.17	
4,363.0	13.10	47.60	4,280.8	485.6	596.3	768.8	1.33	0.99	
4,455.0	13.70	51.90	4,370.3	499.4	612.6	790.1	1.26	0.65	
4,546.0	15.00	50.50	4,458.5	513.5	630.1	812.6	1.48	1.43	
4,638.0	14.40	50.30	4,547.5	528.4	648.1	835.9	0.65	-0.65	
4,730.0	14.70	51.40	4,636.5	543.0	666.0	859.0	0.44	0.33	
4,821.0	14.90	48.80	4,724.5	557.9	683.9	882.3	0.76	0.22	
4,913.0	14.30	48.30	4,813.5	573.3	701.3	905.5	0.67	-0.65	
5,004.0	14.80	48.90	4,901.6	588.4	718.4	928.3	0.57	0.55	
5,096.0	15.60	47.50	4,990.4	604.5	736.4	952.4	0.96	0.87	
5,187.0	15.30	47.60	5,078.1	620.8	754.3	976.7	0.33	-0.33	
5,279.0	13.90	48.30	5,167.1	636.4	771.5	999.9	1.53	-1.52	
5,371.0	14.70	49.50	5,256.3	651.3	788.6	1,022.6	0.93	0.87	
5,462.0	15.50	47.00	5,344.1	667.1	806.3	1,046.3	1.13	0.88	
5,554.0	14.50	45.90	5,433.0	683.5	823.5	1,070.1	1.13	-1.09	
5,646.0	14.70	43.10	5,522.0	700.0	839.8	1,093.2	0.80	0.22	
5,737.0	15.20	49.50	5,610.0	716.2	856.8	1,116.6	1.89	0.55	
5,829.0	14.90	52.30	5,698.8	731.3	875.3	1,140.4	0.85	-0.33	
5,920.0	13.50	52.30	5,787.0	744.9	892.9	1,162.7	1.54	-1.54	
6,012.0	13.80	48.90	5,876.4	758.7	909.7	1,184.4	0.93	0.33	

Survey Report

Company:	EnCana Oil & Gas (USA) Inc	Local Co-ordinate Reference:	Well SGU 8502F-25 (was 7B)
Project:	Story Gulch	TVD Reference:	KBE @ 8320.0ft (Patterson 306)
Site:	F25 496	MD Reference:	KBE @ 8320.0ft (Patterson 306)
Well:	SGU 8502F-25 (was 7B)	North Reference:	True
Wellbore:	DD	Survey Calculation Method:	Minimum Curvature
Design:	DD	Database:	USA EDM 5000 Multi Users DB

Survey

Measured Depth (ft)	Inclination (°)	Azimuth (°)	Vertical Depth (ft)	+N/-S (ft)	+E/-W (ft)	Vertical Section (ft)	Dogleg Rate (°/100ft)	Build Rate (°/100ft)	Formations / Comments
6,103.0	14.90	42.60	5,964.6	774.5	925.8	1,206.9	2.10	1.21	
6,195.0	13.90	42.30	6,053.7	791.3	941.3	1,229.6	1.09	-1.09	
6,286.0	12.70	45.30	6,142.3	806.5	955.7	1,250.4	1.52	-1.32	
6,378.0	12.90	48.20	6,232.0	820.4	970.6	1,270.8	0.73	0.22	
6,469.0	13.60	47.10	6,320.6	834.5	986.0	1,291.7	0.82	0.77	
6,561.0	13.60	44.80	6,410.0	849.5	1,001.5	1,313.2	0.59	0.00	
6,652.0	12.90	44.60	6,498.5	864.3	1,016.2	1,334.0	0.77	-0.77	
6,743.0	12.40	48.60	6,587.3	878.0	1,030.7	1,353.9	1.11	-0.55	
6,835.0	12.20	46.70	6,677.2	891.2	1,045.1	1,373.5	0.49	-0.22	
6,926.0	12.40	49.60	6,766.1	904.1	1,059.6	1,392.9	0.71	0.22	
7,018.0	12.70	47.50	6,855.9	917.4	1,074.6	1,412.9	0.59	0.33	
7,109.0	13.60	48.80	6,944.6	931.2	1,090.0	1,433.6	1.04	0.99	
7,201.0	14.00	53.10	7,033.9	945.0	1,107.0	1,455.5	1.20	0.43	
7,292.0	13.50	53.60	7,122.3	957.9	1,124.4	1,477.1	0.56	-0.55	
7,383.0	13.00	53.50	7,210.9	970.3	1,141.1	1,497.9	0.55	-0.55	
7,475.0	13.00	52.80	7,300.5	982.7	1,157.7	1,518.5	0.17	0.00	
7,567.0	12.70	52.00	7,390.2	995.2	1,173.9	1,538.9	0.38	-0.33	
7,658.0	11.90	51.90	7,479.1	1,007.1	1,189.2	1,558.3	0.88	-0.88	
7,749.0	12.00	49.40	7,568.1	1,019.1	1,203.8	1,577.1	0.58	0.11	
7,841.0	11.70	49.90	7,658.2	1,031.3	1,218.1	1,596.0	0.34	-0.33	
7,932.0	11.00	47.90	7,747.4	1,043.1	1,231.6	1,613.9	0.88	-0.77	
8,024.0	10.20	48.90	7,837.8	1,054.3	1,244.3	1,630.9	0.89	-0.87	
8,115.0	10.00	46.80	7,927.4	1,065.0	1,256.1	1,646.8	0.46	-0.22	
8,206.0	9.50	44.10	8,017.1	1,075.8	1,267.1	1,662.2	0.74	-0.55	
8,298.0	6.90	46.50	8,108.2	1,085.1	1,276.4	1,675.3	2.85	-2.83	
8,389.0	6.20	45.40	8,198.6	1,092.3	1,283.9	1,685.6	0.78	-0.77	
8,480.0	5.60	49.70	8,289.1	1,098.6	1,290.8	1,695.0	0.82	-0.66	
8,571.0	5.20	48.30	8,379.7	1,104.2	1,297.2	1,703.5	0.46	-0.44	
8,662.0	3.50	47.70	8,470.4	1,108.9	1,302.4	1,710.4	1.87	-1.87	
8,753.0	2.90	37.00	8,561.3	1,112.6	1,305.8	1,715.5	0.93	-0.66	
8,844.0	2.70	40.70	8,652.2	1,116.0	1,308.6	1,719.8	0.30	-0.22	
8,937.0	2.30	40.10	8,745.1	1,119.1	1,311.2	1,723.8	0.43	-0.43	
9,029.0	1.90	41.00	8,837.0	1,121.7	1,313.4	1,727.2	0.44	-0.43	
9,120.0	1.40	42.80	8,928.0	1,123.6	1,315.1	1,729.8	0.55	-0.55	
9,212.0	1.10	38.00	9,020.0	1,125.1	1,316.5	1,731.8	0.35	-0.33	
9,303.0	0.80	38.70	9,110.9	1,126.3	1,317.4	1,733.2	0.33	-0.33	
9,394.0	0.40	20.40	9,201.9	1,127.1	1,317.9	1,734.1	0.48	-0.44	
9,486.0	0.40	91.60	9,293.9	1,127.4	1,318.3	1,734.7	0.51	0.00	
9,577.0	0.50	164.20	9,384.9	1,127.0	1,318.8	1,734.7	0.59	0.11	
9,668.0	0.60	191.40	9,475.9	1,126.2	1,318.8	1,734.2	0.30	0.11	
9,759.0	0.90	201.90	9,566.9	1,125.0	1,318.4	1,733.2	0.36	0.33	
9,851.0	1.30	208.50	9,658.9	1,123.5	1,317.6	1,731.6	0.46	0.43	
9,942.0	1.40	205.20	9,749.9	1,121.5	1,316.7	1,729.6	0.14	0.11	
10,034.0	0.50	127.10	9,841.9	1,120.3	1,316.5	1,728.6	1.51	-0.98	
10,126.0	0.90	44.00	9,933.9	1,120.6	1,317.3	1,729.4	1.06	0.43	
10,217.0	0.60	72.30	10,024.9	1,121.2	1,318.3	1,730.6	0.51	-0.33	
10,309.0	0.50	35.40	10,116.8	1,121.7	1,319.0	1,731.4	0.39	-0.11	
10,400.0	0.40	162.10	10,207.8	1,121.7	1,319.3	1,731.7	0.89	-0.11	
10,492.0	0.90	131.10	10,299.8	1,120.9	1,320.0	1,731.7	0.65	0.54	
10,583.0	1.40	83.90	10,390.8	1,120.6	1,321.6	1,732.7	1.13	0.55	
10,675.0	1.50	7.00	10,482.8	1,121.9	1,322.9	1,734.5	1.96	0.11	
10,766.0	2.10	340.60	10,573.8	1,124.7	1,322.5	1,736.0	1.11	0.66	
10,953.0	1.20	297.50	10,760.7	1,128.8	1,319.6	1,736.5	0.79	-0.48	

Survey Report

Company:	EnCana Oil & Gas (USA) Inc	Local Co-ordinate Reference:	Well SGU 8502F-25 (was 7B)
Project:	Story Gulch	TVD Reference:	KBE @ 8320.0ft (Patterson 306)
Site:	F25 496	MD Reference:	KBE @ 8320.0ft (Patterson 306)
Well:	SGU 8502F-25 (was 7B)	North Reference:	True
Wellbore:	DD	Survey Calculation Method:	Minimum Curvature
Design:	DD	Database:	USA EDM 5000 Multi Users DB

Survey									
Measured Depth (ft)	Inclination (°)	Azimuth (°)	Vertical Depth (ft)	+N/-S (ft)	+E/-W (ft)	Vertical Section (ft)	Dogleg Rate (°/100ft)	Build Rate (°/100ft)	Formations / Comments
11,136.0	1.10	276.80	10,943.6	1,129.9	1,316.1	1,734.6	0.23	-0.05	
11,227.0	1.10	287.00	11,034.6	1,130.2	1,314.4	1,733.5	0.21	0.00	
11,319.0	0.60	239.30	11,126.6	1,130.3	1,313.2	1,732.6	0.90	-0.54	
11,410.0	1.30	243.30	11,217.6	1,129.5	1,311.8	1,731.1	0.77	0.77	
11,501.0	1.90	252.90	11,308.6	1,128.6	1,309.5	1,728.7	0.72	0.66	
11,593.0	2.20	261.40	11,400.5	1,127.9	1,306.3	1,725.9	0.46	0.33	
11,684.0	2.30	252.50	11,491.4	1,127.1	1,302.8	1,722.7	0.40	0.11	
11,867.0	2.50	240.20	11,674.3	1,124.0	1,295.8	1,715.4	0.30	0.11	
11,959.0	2.30	226.60	11,766.2	1,121.8	1,292.8	1,711.6	0.65	-0.22	
12,050.0	2.30	214.50	11,857.1	1,119.0	1,290.4	1,708.0	0.53	0.00	
12,141.0	2.60	223.50	11,948.0	1,116.0	1,287.9	1,704.2	0.54	0.33	
12,233.0	3.10	226.00	12,039.9	1,112.8	1,284.7	1,699.6	0.56	0.54	
12,324.0	2.60	214.00	12,130.8	1,109.3	1,281.8	1,695.2	0.85	-0.55	
12,416.0	2.90	217.70	12,222.7	1,105.8	1,279.2	1,690.9	0.38	0.33	
12,507.0	2.90	213.00	12,313.6	1,102.0	1,276.5	1,686.4	0.26	0.00	
12,519.0	2.90	211.60	12,325.6	1,101.5	1,276.2	1,685.8	0.59	0.00	Last Cathedral Survey @ 12,519' MD
12,584.0	2.90	211.60	12,390.5	1,098.7	1,274.5	1,682.7	0.00	0.00	Projection to Bit @ 12,584'

Targets									
Target Name	Dip Angle (°)	Dip Dir. (°)	TVD (ft)	+N/-S (ft)	+E/-W (ft)	Northing (ft)	Easting (ft)	Latitude	Longitude
- hit/miss target									
- Shape									
F25 496 SGU 8502F-25	0.00	0.00	12,300.0	1,116.0	1,296.9	1,682,249.05	2,264,109.14	39° 40' 38.96 N	108° 6' 53.31 W
- actual wellpath misses target center by 24.0ft at 12492.2ft MD (12298.9 TVD, 1102.6 N, 1276.9 E)									
- Rectangle (sides W30.0 H50.0 D0.0)									
F25 496 SGU 8502F-25	0.00	0.00	8,640.0	1,126.0	1,313.9	1,682,258.54	2,264,126.44	39° 40' 39.06 N	108° 6' 53.09 W
- actual wellpath misses target center by 11.9ft at 8832.4ft MD (8640.6 TVD, 1115.6 N, 1308.2 E)									
- Point									

Design Annotations				
Measured Depth (ft)	Vertical Depth (ft)	Local Coordinates		Comment
		+N/-S (ft)	+E/-W (ft)	
2,985.0	2,929.1	309.9	396.6	Last Cathedral svy @ 2985' MD
12,519.0	12,325.6	1,101.5	1,276.2	Last Cathedral Survey @ 12,519' MD
12,584.0	12,390.5	1,098.7	1,274.5	Projection to Bit @ 12,584'

Checked By: _____	Approved By: _____	Date: _____
-------------------	--------------------	-------------