

---

**WPX ENERGY ROCKY MOUNTAIN LLC-EBUS**

---

**KP 321-17  
KOKOPELLI  
Garfield County , Colorado**

**Cement Surface Casing**  
**09-Feb-2012**

**Post Job Report**

## The Road to Excellence Starts with Safety

Sold To #: 300721	Ship To #: 2903343	Quote #:	Sales Order #: 9217401
Customer: WPX ENERGY ROCKY MOUNTAIN LLC-EBUS	Customer Rep: Hudson, Matt		
Well Name: KP	Well #: 321-17	API/UWI #: 05-045-20986	
Field: KOKOPELLI	City (SAP): SILT	County/Parish: Garfield	State: Colorado
Lat: N 39.536 deg. OR N 39 deg. 32 min. 7.843 secs.	Long: W 107.58 deg. OR W -108 deg. 25 min. 12.929 secs.		
Contractor: NABORS 574	Rig/Platform Name/Num: 574		
Job Purpose: Cement Surface Casing			
Well Type: Development Well	Job Type: Cement Surface Casing		
Sales Person: SCOTT, KYLE	Srvc Supervisor: JAMISON, PRICE	MBU ID Emp #: 229155	

### Job Personnel

HES Emp Name	Exp Hrs	Emp #	HES Emp Name	Exp Hrs	Emp #	HES Emp Name	Exp Hrs	Emp #
DEUSSEN, EDWARD Eric	5.5	485182	HUGENTOBLE, LOGAN Mark	5.5	447333	JAMISON, PRICE W	5.5	229155
JENSEN, SHANE Lynn	5.5	441759	VANALSTYNE, TROY L	5.5	420256			

### Equipment

HES Unit #	Distance-1 way	HES Unit #	Distance-1 way	HES Unit #	Distance-1 way	HES Unit #	Distance-1 way
10011429	60 mile	10744549	60 mile	10995027	60 mile	11560046	60 mile
11562538	60 mile	11583934	60 mile				

### Job Hours

Date	On Location Hours	Operating Hours	Date	On Location Hours	Operating Hours	Date	On Location Hours	Operating Hours
2/9/12	5.5	3						

TOTAL	Total is the sum of each column separately							
-------	--	--	--	--	--	--	--	--

### Job

Formation Name	Top	Bottom	Called Out	Date	Time	Time Zone
Formation Depth (MD)			On Location	09 - Feb - 2012	02:00	MST
Form Type	BHST		Job Started	09 - Feb - 2012	05:06	MST
Job depth MD	1288. ft	Job Depth TVD	1308. ft	Job Completed	09 - Feb - 2012	06:03
Water Depth		Wk Ht Above Floor	3. ft	Departed Loc	09 - Feb - 2012	07:30
Perforation Depth (MD)	From	To				

### Well Data

Description	New / Used	Max pressure psig	Size in	ID in	Weight lbm/ft	Thread	Grade	Top MD ft	Bottom MD ft	Top TVD ft	Bottom TVD ft
OPEN HOLE				13.5				.	1308.	.	1308.
SURFACE CASING	Unknown		9.625	9.001	32.3		H-40	.	1288.	.	1288.

### Sales/Rental/3<sup>rd</sup> Party (HES)

Description	Qty	Qty uom	Depth	Supplier
PLUG,CMTG,TOP,9 5/8,HWE,8.16 MIN/9.06 MA	1	EA		

### Tools and Accessories

Type	Size	Qty	Make	Depth	Type	Size	Qty	Make	Depth	Type	Size	Qty	Make
Guide Shoe					Packer					Top Plug			
Float Shoe					Bridge Plug					Bottom Plug			
Float Collar					Retainer					SSR plug set			
Insert Float										Plug Container			
Stage Tool										Centralizers			

### Miscellaneous Materials

Gelling Agt	Conc	Surfactant	Conc	Acid Type	Qty	Conc	%
Treatment Fld	Conc	Inhibitor	Conc	Sand Type	Size	Qty	

### Fluid Data

Stage/Plug #: 1

Fluid #	Stage Type	Fluid Name	Qty	Qty uom	Mixing Density lbm/gal	Yield ft <sup>3</sup> /sk	Mix Fluid Gal/sk	Rate bbl/min	Total Mix Fluid Gal/sk
1	Fresh Water		20.00	bbl	8.4	.0	.0	6.0	
2	VersaCem Lead	VERSACEM (TM) SYSTEM (452010)	185.0	sacks	12.3	2.38	13.75	8.0	13.75
3	VersaCem Tail	VERSACEM (TM) SYSTEM (452010)	160.0	sacks	12.8	2.11	11.75	8.0	11.75
4	Displacement Fluid		97.9	bbl	8.4	.0	.0	10.0	
<b>Calculated Values</b>		<b>Pressures</b>		<b>Volumes</b>					
Displacement	97.9	Shut In: Instant		Lost Returns	NO	Cement Slurry	138.5	Pad	
Top Of Cement	SURFACE	5 Min		Cement Returns	25	Actual Displacement	97.9	Treatment	
Frac Gradient		15 Min		Spacers	20	Load and Breakdown		Total Job	256
<b>Rates</b>									
Circulating	10	Mixing	8	Displacement	10	Avg. Job	8		
Cement Left In Pipe	Amount	44.5 ft	Reason	Shoe Joint					
Frac Ring # 1 @	ID		Frac ring # 2 @	ID		Frac Ring # 3 @	ID	Frac Ring # 4 @	ID
The Information Stated Herein Is Correct				Customer Representative Signature					

*The Road to Excellence Starts with Safety*

<b>Sold To #:</b> 300721		<b>Ship To #:</b> 2903343		<b>Quote #:</b>		<b>Sales Order #:</b> 9217401	
<b>Customer:</b> WPX ENERGY ROCKY MOUNTAIN LLC-EBUS				<b>Customer Rep:</b> Hudson, Matt			
<b>Well Name:</b> KP			<b>Well #:</b> 321-17			<b>API/UWI #:</b> 05-045-20986	
<b>Field:</b> KOKOPELLI		<b>City (SAP):</b> SILT		<b>County/Parish:</b> Garfield		<b>State:</b> Colorado	
<b>Legal Description:</b>							
<b>Lat:</b> N 39.536 deg. OR N 39 deg. 32 min. 7.843 secs.				<b>Long:</b> W 107.58 deg. OR W -108 deg. 25 min. 12.929 secs.			
<b>Contractor:</b> NABORS 574			<b>Rig/Platform Name/Num:</b> 574				
<b>Job Purpose:</b> Cement Surface Casing						<b>Ticket Amount:</b>	
<b>Well Type:</b> Development Well			<b>Job Type:</b> Cement Surface Casing				
<b>Sales Person:</b> SCOTT, KYLE			<b>Srv Supervisor:</b> JAMISON, PRICE			<b>MBU ID Emp #:</b> 229155	

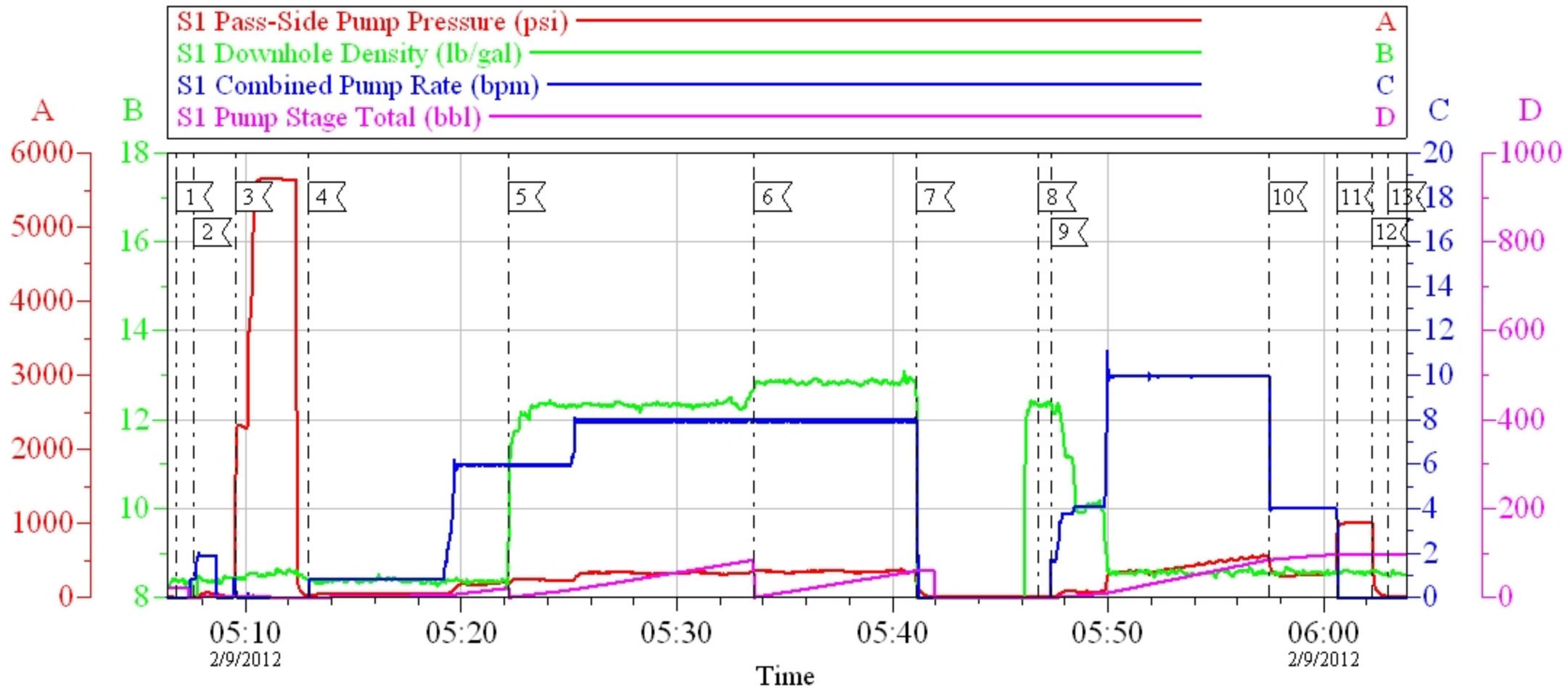
Activity Description	Date/Time	Cht #	Rate bbl/min	Volume bbl		Pressure psig		Comments
				Stage	Total	Tubing	Casing	
Call Out	02/08/2012 21:30							TD 1308 HOLE SIZE 13.5 TP 1288 CASING 9.625 32.3 # H-40 SHOE JOINT 44.48 FT MUD 9.9 PPG
Depart Yard Safety Meeting	02/08/2012 23:20							
Crew Leave Yard	02/08/2012 23:30							
Arrive At Loc	02/09/2012 02:00							
Assessment Of Location Safety Meeting	02/09/2012 02:15							
Pre-Rig Up Safety Meeting	02/09/2012 03:30							
Pre-Job Safety Meeting	02/09/2012 04:30							
Start Job	02/09/2012 05:06							
Prime Pumps	02/09/2012 05:07		2	2			63.0	FRESH WATER
Test Lines	02/09/2012 05:09						5000.0	
Pump Spacer 1	02/09/2012 05:12		6	20			201.0	FRESH WATER
Pump Lead Cement	02/09/2012 05:22		8	78.4			347.0	MIXED @ 12.3 PPG YIELD 2.38 WAT/REQ 13.75 185 SKS
Pump Tail Cement	02/09/2012 05:33		8	60.1			367.0	MIXED @ 12.8 PPG YIELD 2.11 WAT/REQ 11.75 160 SKS
Shutdown	02/09/2012 05:41							
Drop Plug	02/09/2012 05:46							

## Cementing Job Log

Activity Description	Date/Time	Cht #	Rate bbl/min	Volume bbl		Pressure psig		Comments
				Stage	Total	Tubing	Casing	
Pump Displacement	02/09/2012 05:47		10					FRESH WATER
Slow Rate	02/09/2012 05:57		4	87			521.0	
Bump Plug	02/09/2012 06:00		4	97.9			321.0	PRESSURE UP TO 1017 PSI
Check Floats	02/09/2012 06:02							FLOATS HELD
End Job	02/09/2012 06:03							CEMENT BACK TO SURFACE 25 BBLS
Post-Job Safety Meeting (Pre Rig-Down)	02/09/2012 06:15							GOOD RETURNS THROUGHOUT JOB
Depart Location Safety Meeting	02/09/2012 07:20							CASING WAS NOT MOVED THROUGHOUT JOB
Crew Leave Location	02/09/2012 07:30							THANKS FOR USING HALLIBURTON BILL JAMISON & CREW

# WPX KP 321-17

## 9.625 SURFACE CASING



Local Event Log					
1	START JOB	05:06:46	2	PRIME LINES	05:07:37
3	TEST LINES	05:09:31	4	START FRESH WATER SPACER	05:12:55
5	START LEAD CEMENT	05:22:10	6	START TAIL CEMENT	05:33:36
7	SHUT DOWN	05:41:08	8	DROP PLUG	05:46:47
9	START DISPLACEMENT	05:47:20	10	SLOW RATE	05:57:29
11	BUMP PLUG	06:00:37	12	CHECK FLOATS	06:02:16
13	END JOB	06:03:00			

Customer: WPX  
Well Description: KP 321-17  
Company Rep: MATT HUDSON

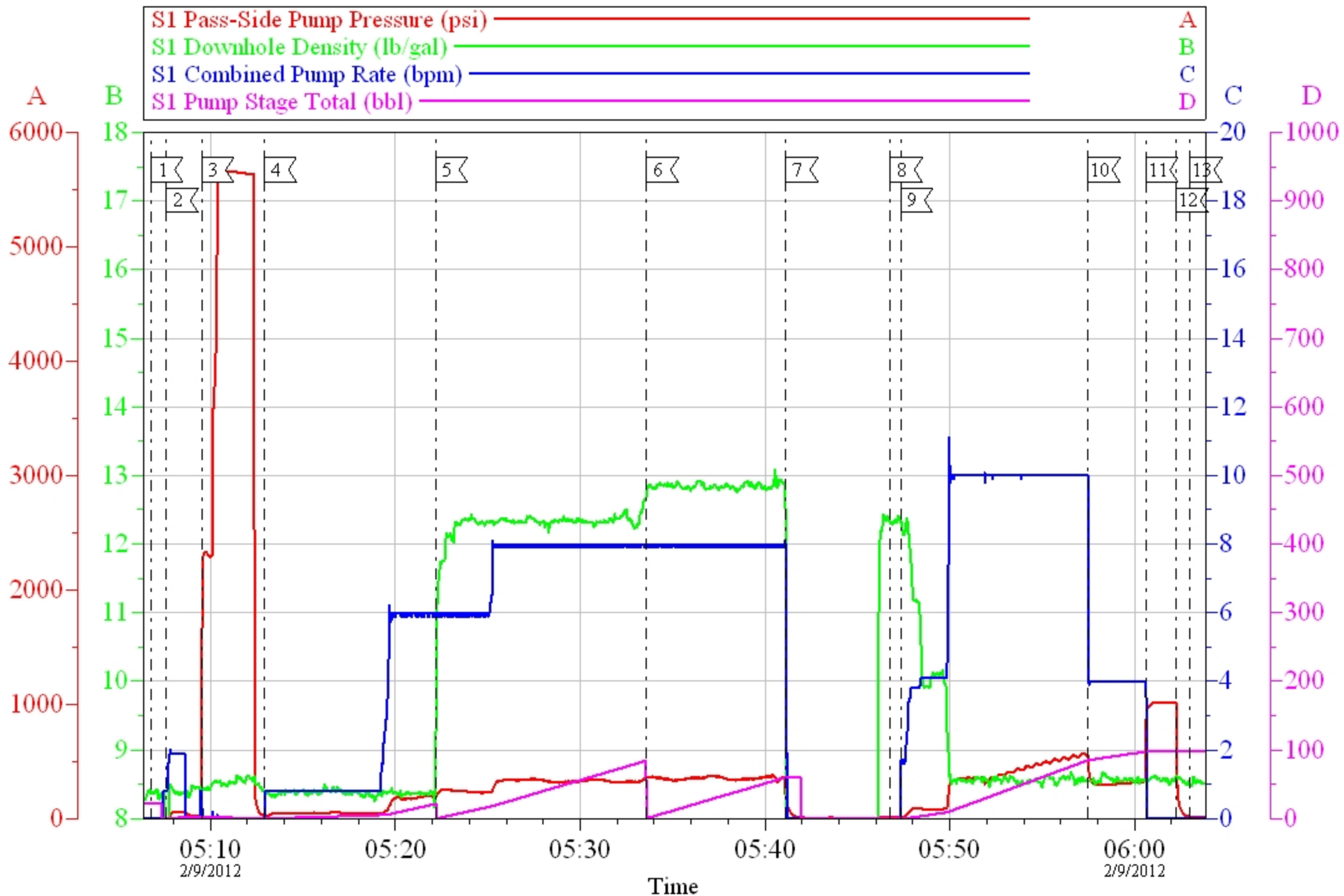
Job Date: 09-Feb-2012  
Job Type: CEMENT  
Cement Supervisor: BILL JAMISON

Sales Order #: 9217401  
ADC Used: YES  
Elite # 5 ED DEUSSEN

OptiCem v6.4.10  
09-Feb-12 06:07

# WPX KP 321-17

## 9.625 SURFACE CASING



Customer: WPX  
Well Description: KP 321-17  
Company Rep: MATT HUDSON

Job Date: 09-Feb-2012  
Job Type: CEMENT  
Cement Supervisor: BILL JAMISON

Sales Order #: 9217401  
ADC Used: YES  
Elite # 5 ED DEUSSEN

OptiCem v6.4.10  
09-Feb-12 06:07

# HALLIBURTON

## Water Analysis Report

Company: **WILLIAMS PRODUCTION**

Submitted by: **BILL JAMISON**

Attention: **JOHN TROUT**

Lease **KP**

Well # **321-17**

Date: **2/9/2012**

Date Rec.: **2/9/2012**

S.O.# **9217401**

Job Type: **9 5/8" SURFACE**

Specific Gravity	<b>MAX</b>	<b>1</b>
pH	<b>8</b>	<b>6.5</b>
Potassium (K)	<b>5000</b>	<b>200 Mg / L</b>
Calcium (Ca)	<b>500</b>	<b>120 Mg / L</b>
Iron (FE2)	<b>300</b>	<b>0 Mg / L</b>
Chlorides (Cl)	<b>3000</b>	<b>0 Mg / L</b>
Sulfates (SO <sub>4</sub> )	<b>1500</b>	<b>-200 Mg / L</b>
Chlorine (Cl <sub>2</sub> )		<b>0 Mg / L</b>
Temp	<b>40-80</b>	<b>54 Deg</b>
Total Dissolved Solids		<b>210 Mg / L</b>

Respectfully: **BILL JAMISON**

Title: **CEMENTING SUPERVISOR**

Location: **Grand Junction, CO**

### NOTICE:

This report is limited to the described sample tested. Any person using or relying on this report agrees that Halliburton shall not be liable for any loss or damage whether due to act or omission resulting from such report or its use.



<b>Sales Order #:</b> 9217401	<b>Line Item:</b> 10	<b>Survey Conducted Date:</b> 2/9/2012
<b>Customer:</b> WPX ENERGY ROCKY MOUNTAIN LLC-EBUS		<b>Job Type (BOM):</b> CMT SURFACE CASING BOM
<b>Customer Representative:</b> MATT HUTSON		<b>API / UWI: (leave blank if unknown)</b> 05-045-20986
<b>Well Name:</b> KP		<b>Well Number:</b> 321-17
<b>Well Type:</b> Development Well	<b>Well Country:</b> United States of America	
<b>H2S Present:</b>	<b>Well State:</b> Colorado	<b>Well County:</b> Garfield

Dear Customer,

We hope that you were satisfied with the service quality of this job performed by Halliburton. It is the aim of our management and service personnel to deliver equipment and service of a standard unmatched in the service sector of the energy industry.

Please take the time to let us know if our performance met with your satisfaction. Please be as critical as possible to ensure we constantly improve our service. Your comments are of great value to us and are intended for the exclusive use of Halliburton.

### CUSTOMER SATISFACTION SURVEY

CATEGORY	CUSTOMER SATISFACTION RESPONSE	
Survey Conducted Date	The date the survey was conducted	2/9/2012
Survey Interviewer	The survey interviewer is the person who initiated the survey.	PRICE JAMISON (HAL9235)
Customer Participation	Did the customer participate in this survey? (Y/N)	Yes
Customer Representative	Enter the Customer representative name	MATT HUTSON
HSE	Was our HSE performance satisfactory? Circle Y or N	Yes
Equipment	Were you satisfied with our Equipment? Circle Y or N	Yes
Personnel	Were you satisfied with our people? Circle Y or N	Yes
Customer Comment	Customer's Comment	NONE

<b>CUSTOMER SIGNATURE</b>
---------------------------

<b>Sales Order #:</b> 9217401	<b>Line Item:</b> 10	<b>Survey Conducted Date:</b> 2/9/2012
<b>Customer:</b> WPX ENERGY ROCKY MOUNTAIN LLC-EBUS		<b>Job Type (BOM):</b> CMT SURFACE CASING BOM
<b>Customer Representative:</b> MATT HUTSON		<b>API / UWI: (leave blank if unknown)</b> 05-045-20986
<b>Well Name:</b> KP		<b>Well Number:</b> 321-17
<b>Well Type:</b> Development Well	<b>Well Country:</b> United States of America	
<b>H2S Present:</b>	<b>Well State:</b> Colorado	<b>Well County:</b> Garfield

*KEY PERFORMANCE INDICATORS*

General	
<b>Survey Conducted Date</b> The date the survey was conducted	2/9/2012

Cementing KPI Survey	
<b>Type of Job</b> Select the type of job. (Cementing or Non-Cementing)	0
<b>Select the Maximum Deviation range for this Job</b> What is the highest deviation for the job you just completed? This may not be the maximum well deviation.	Deviated
<b>Total Operating Time (hours)</b> Total Operating Hours Including Rig-up, Pumping, Rig-down. Enter in decimal format.	3
<b>HSE Incident, Accident, Injury</b> HSE Incident, Accident, Injury. This should be recordable incidents only.	No
<b>Was the job purpose achieved?</b> Was the job delivered correctly as per customer agreed design?	Yes
<b>Operating Hours (Pumping Hours)</b> Total number of hours pumping fluid on this job. Enter in decimal format.	1
<b>Customer Non-Productive Rig Time (hrs)</b> Lost time due to Halliburton in the start, execution, or completion of an ordered service or product, or delays in a follow-on service. Enter in decimal format. 0 if none.	0
<b>Type of Rig Classification Job Was Performed</b> Type Of Rig (classification) Job Was Performed On	Drilling Rig (Portable)
<b>Number Of JSAs Performed</b> Number Of Jsas Performed	5
<b>Number of Unplanned Shutdowns</b> Unplanned shutdown is when injection stops for any period of time.	0
<b>Was this a Primary Cement Job (Yes / No)</b>	Yes

<b>Sales Order #:</b> 9217401	<b>Line Item:</b> 10	<b>Survey Conducted Date:</b> 2/9/2012
<b>Customer:</b> WPX ENERGY ROCKY MOUNTAIN LLC-EBUS		<b>Job Type (BOM):</b> CMT SURFACE CASING BOM
<b>Customer Representative:</b> MATT HUTSON		<b>API / UWI: (leave blank if unknown)</b> 05-045-20986
<b>Well Name:</b> KP		<b>Well Number:</b> 321-17
<b>Well Type:</b> Development Well	<b>Well Country:</b> United States of America	
<b>H2S Present:</b>	<b>Well State:</b> Colorado	<b>Well County:</b> Garfield

Primary Cement Job= Casing job, Liner job, or Tie-back job.	
<b>Did We Run Wiper Plugs?</b> Did We Run Top And Bottom Casing Wiper Plugs?	Top
<b>Mixing Density of Job Stayed in Designed Density Range (0-100%)</b> Density Range defined as +/- .20 ppg. Calculation: Total BBLs cement mixed at designed density divided by total BBLs of cement multiplied by 100	98
<b>Was Automated Density Control Used?</b> Was Automated Density Control (ADC) Used ?	Yes
<b>Pump Rate (percent) of Job Stayed At Designed Pump Rate</b> Pump Rate range defined as +/- 1bbl/min. Calculation: Total BBLs of fluid pumped at the designed rate divided by Total BBLs of fluid pumped, multiplied by 100	98
<b>Nbr of Remedial Sqz Jobs Rqd - Competition</b> Number Of Remedial Squeeze Jobs Required After Primary Job Performed By Competition	0
<b>Nbr of Remedial Plug Jobs Rqd - HES</b> Number Of Remedial Plug Jobs Needed After Primary Plug Pumped By HES	0
<b>Nbr of Remedial Sqz Jobs Rqd - HES</b> Number Of Remedial Squeeze Jobs Required After Primary Job Performed By HES	0