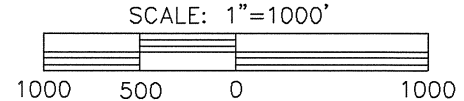


LOCATED IN THE NE1/4SW1/4 OF
SECTION 16, T6N, R91W OF THE
6TH P.M., MOFFAT COUNTY, COLORADO

WELL –
GULFPORT ENERGY CORP.
RIDGEVIEW #32-16-1



LEGEND

- FOUND MONUMENT
- ⊙ WELL LOCATION
- └ 90° SYMBOL
- ⊕ CALCULATED CORNER
- APPROX. BOTTOM HOLE



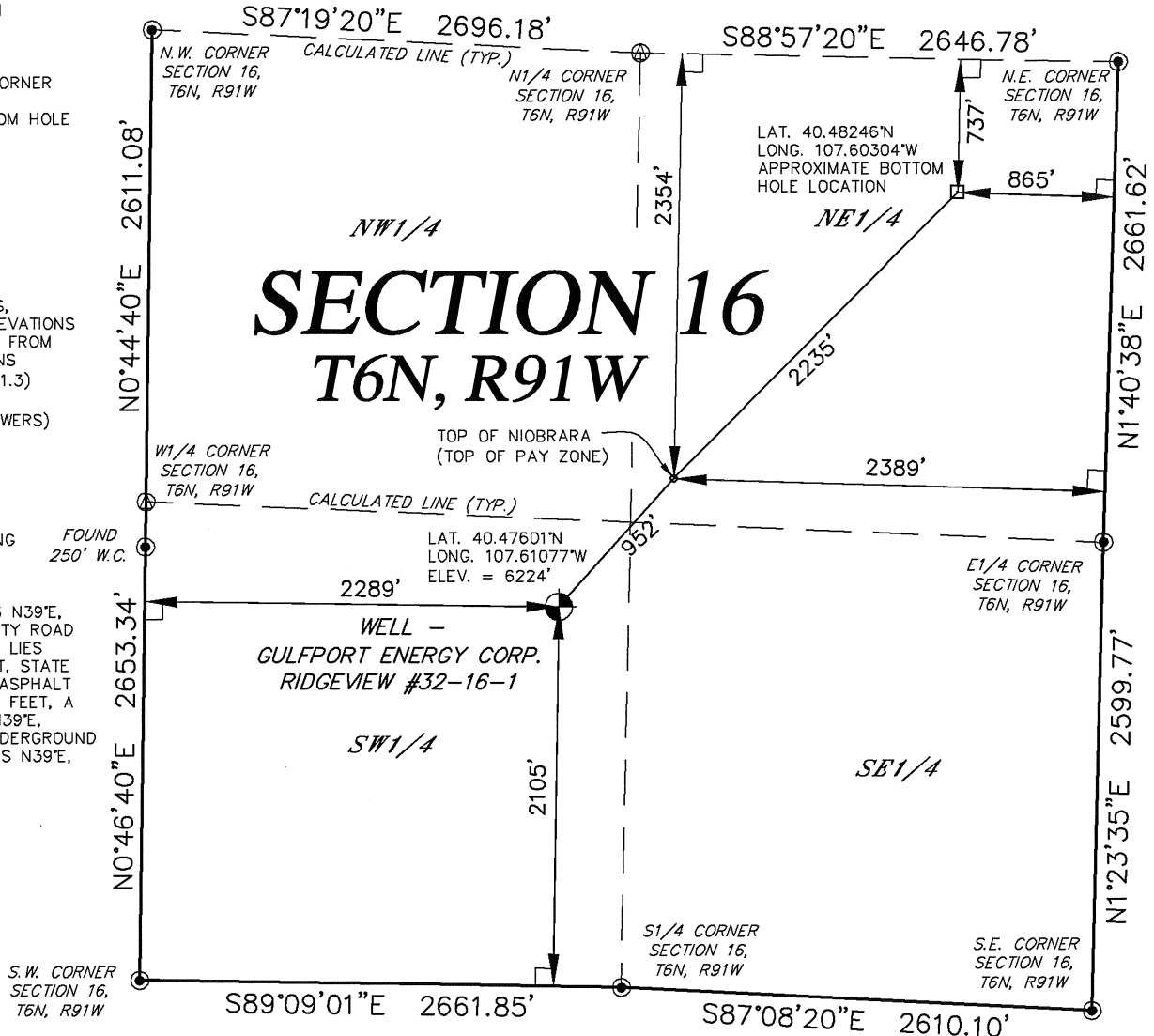
BASIS OF BEARINGS,
DISTANCES AND ELEVATIONS
SHOWN ARE TAKEN FROM
G.P.S. OBSERVATIONS
(NAD 83)(PDOP – 1.3)
(JULY 31, 2012)
(OPERATOR– L. POWERS)

SURFACE USE

AGRICULTURAL
LIVESTOCK GRAZING

IMPROVEMENTS

A WATERLINE LIES N39°E,
137± FEET, COUNTY ROAD
NO. 107 ASPHALT LIES
S02°W, 200± FEET, STATE
HIGHWAY NO. 13 ASPHALT
LIES S74°W, 255± FEET, A
WATERLINE LIES N39°E,
143± FEET, A UNDERGROUND
ELECTRIC LINE LIES N39°E,
192± FEET



LAND SURVEYOR'S CERTIFICATE

I, Lloyd W. Powers being a duly registered Professional Land Surveyor do hereby certify that this survey was made by me or under my direct supervision and is based upon my professional knowledge, information and belief and conforms with the applicable standards of practice in the State of Colorado. This certificate does not constitute a guaranty or warranty, either expressed or implied.



Lloyd W. Powers, PLS
Colorado Reg. No. 13901