

The Road to Excellence Starts with Safety

Sold To #: 300721	Ship To #: 2890318	Quote #:	Sales Order #: 9055813
Customer: WILLIAMS PRODUCTION RMT INC - EBUS	Customer Rep: HARTL, AL		
Well Name: RWF	Well #: 42-36	API/UWI #: 05-045-20742	
Field: Rulison	City (SAP): RIFLE	County/Parish: Garfield	State: Colorado
Lat: N 39.485 deg. OR N 39 deg. 29 min. 7.739 secs.	Long: W 107.836 deg. OR W -108 deg. 9 min. 52.153 secs.		
Contractor: NABORS	Rig/Platform Name/Num: NABORS 576		
Job Purpose: Cement Surface Casing			
Well Type: Development Well	Job Type: Cement Surface Casing		
Sales Person: MAYO, MARK	Srv Supervisor: SMITH, DUSTIN	MBU ID Emp #: 418015	

Job Personnel

HES Emp Name	Exp Hrs	Emp #	HES Emp Name	Exp Hrs	Emp #	HES Emp Name	Exp Hrs	Emp #
BURKE, BRENDAN Patrick	12.5	487782	SMITH, DUSTIN Michael	12.5	418015	WOLFE, JON P	12.5	485217
WYCKOFF, RYAN Scott	12.5	476117						

Equipment

HES Unit #	Distance-1 way	HES Unit #	Distance-1 way	HES Unit #	Distance-1 way	HES Unit #	Distance-1 way
10001431	60 mile	10724643	60 mile	11259883	60 mile	11560046	60 mile
11562538	60 mile						

Job Hours

Date	On Location Hours	Operating Hours	Date	On Location Hours	Operating Hours	Date	On Location Hours	Operating Hours
12/6/11	12.5	3						

TOTAL Total is the sum of each column separately

Job

Formation Name	Top	Bottom	Called Out	Date	Time	Time Zone
Formation Depth (MD)			On Location	05 - Dec - 2011	20:00	MST
Form Type		BHST	Job Started	06 - Dec - 2011	00:00	MST
Job depth MD	1160. ft	Job Depth TVD	Job Completed	06 - Dec - 2011	10:15	MST
Water Depth		Wk Ht Above Floor	Departed Loc	06 - Dec - 2011	11:14	MST
Perforation Depth (MD)	From	To		06 - Dec - 2011	12:30	MST

Well Data

Description	New / Used	Max pressure psig	Size in	ID in	Weight lbm/ft	Thread	Grade	Top MD ft	Bottom MD ft	Top TVD ft	Bottom TVD ft
OPEN HOLE				13.5				.	1160.		
SURFACE CASING	New		9.625	9.001	32.3			.	1122.		

Sales/Rental/3rd Party (HES)

Description	Qty	Qty uom	Depth	Supplier
PLUG,CMTG,TOP,9 5/8,HWE,8.16 MIN/9.06 MA	1	EA		

Tools and Accessories

Type	Size	Qty	Make	Depth	Type	Size	Qty	Make	Depth	Type	Size	Qty	Make
Guide Shoe					Packer					Top Plug	9 5/8	1	HES
Float Shoe					Bridge Plug					Bottom Plug			
Float Collar					Retainer					SSR plug set			
Insert Float										Plug Container	9 5/8	1	HES
Stage Tool										Centralizers			

Miscellaneous Materials

Gelling Agt	Conc	Surfactant	Conc	Acid Type	Qty	Conc	%
Treatment Fld	Conc	Inhibitor	Conc	Sand Type	Size	Qty	

Fluid Data

Stage/Plug #: 1

Fluid #	Stage Type	Fluid Name	Qty	Qty uom	Mixing Density lbm/gal	Yield ft ³ /sk	Mix Fluid Gal/sk	Rate bbl/min	Total Mix Fluid Gal/sk
1	Water Spacer		20.00	bbl	8.34	.0	.0	4.0	
2	Lead Cement	VERSACEM (TM) SYSTEM (452010)	160.0	sacks	12.3	2.38	13.75	8.0	13.75
	13.75 Gal	FRESH WATER							
3	Tail Cement	VERSACEM (TM) SYSTEM (452010)	160.0	sacks	12.8	2.11	11.75	8.0	11.75
	11.75 Gal	FRESH WATER							
4	Displacement Fluid		84.90	bbl	8.34	.0	.0	10.0	
Calculated Values		Pressures		Volumes					
Displacement	84.9	Shut In: Instant		Lost Returns	0	Cement Slurry	127.9	Pad	
Top Of Cement	SURFACE	5 Min		Cement Returns	24	Actual Displacement	84.9	Treatment	
Frac Gradient		15 Min		Spacers	10	Load and Breakdown		Total Job	232.8
Rates									
Circulating		Mixing	8	Displacement	10	Avg. Job			9
Cement Left In Pipe	Amount	43 ft	Reason	Shoe Joint					
Frac Ring # 1 @	ID	Frac ring # 2 @	ID	Frac Ring # 3 @	ID	Frac Ring # 4 @	ID		
The Information Stated Herein Is Correct				Customer Representative Signature					

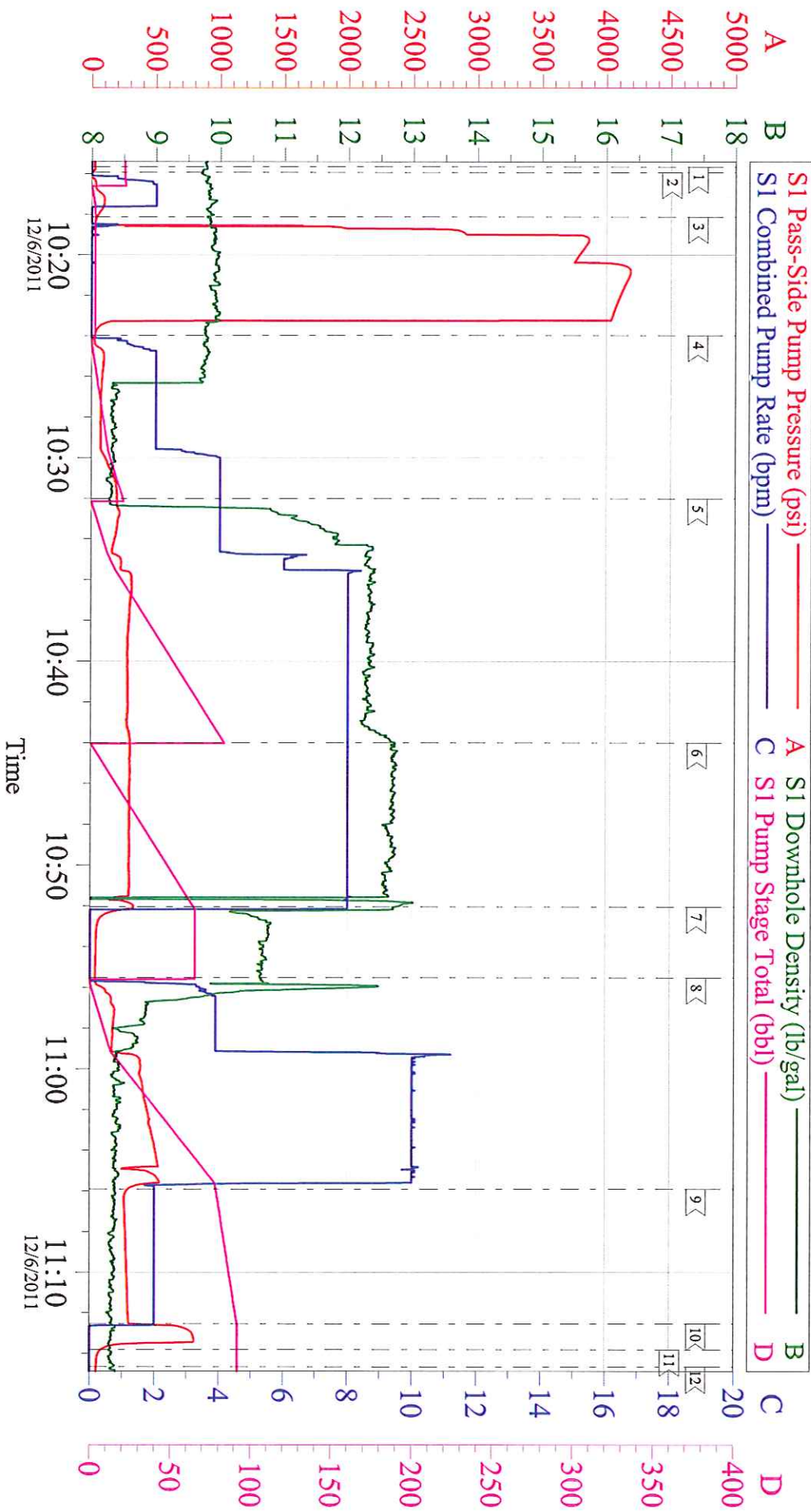
The Road to Excellence Starts with Safety

Sold To #: 300721	Ship To #: 2890318	Quote #:	Sales Order #: 9055813
Customer: WILLIAMS PRODUCTION RMT INC - EBUS	Customer Rep: HARTL, AL		
Well Name: RWF	Well #: 42-36	API/UWI #: 05-045-20742	
Field: Rulison	City (SAP): RIFLE	County/Parish: Garfield	State: Colorado
Legal Description:			
Lat: N 39.485 deg. OR N 39 deg. 29 min. 7.739 secs.		Long: W 107.836 deg. OR W -108 deg. 9 min. 52.153 secs.	
Contractor: NABORS	Rig/Platform Name/Num: NABORS 576		
Job Purpose: Cement Surface Casing	Ticket Amount:		
Well Type: Development Well	Job Type: Cement Surface Casing		
Sales Person: MAYO, MARK	Srv Supervisor: SMITH, DUSTIN	MBU ID Emp #: 418015	

Activity Description	Date/Time	Cht #	Rate bbl/min	Volume bbl		Pressure psig		Comments
				Stage	Total	Tubing	Casing	
Call Out	12/05/2011 20:00							ELITE # 5
Depart Yard Safety Meeting	12/05/2011 22:00							ALL HES EMPLOYEES
Arrive At Loc	12/06/2011 00:00							ARRIVED ON LOCATION 2 HOURS EARLY DIDNT START CHARGING TIME UNTIL REQUESTED ON LOCATION TIME RIG STILL DRILLING
Assessment Of Location Safety Meeting	12/06/2011 03:00							ALL HES EMPLOYEES
Pre-Rig Up Safety Meeting	12/06/2011 03:30							ALL HES EMPLOYEES
Rig-Up Equipment	12/06/2011 03:40							1 F-550 PICKUP 1 HT-400 PUMP TRUCK 1 660 BULK TRUCK
Pre-Job Safety Meeting	12/06/2011 10:00							ALL HES EMPLOYEES AND RIG CREW
Rig-Up Completed	12/06/2011 10:15							RIG CIRCULATED FOR 1 HOUR PRIOR TO JOB
Start Job	12/06/2011 10:15							TD: 1160 TP: 1122 SJ: 43 9 5/8 32.3 CSG 13 1/2 OH MUD WT: 9.8 PPG
Test Lines	12/06/2011 10:18					4091.0		PRESSURE TEST OK
Pump Spacer	12/06/2011 10:23		4	20	20		201.0	FRESH WATER
Activity Description	Date/Time	Cht #	Rate bbl/min	Volume bbl		Pressure psig		Comments
				Stage	Total	Tubing	Casing	

Pump Lead Cement	12/06/2011 10:32		8	67.8	67.8		330.0	160 SKS 12.3 PPG 2.38 YIELD 13.75 GAL/SK LEAD CEMENT WEIGHT VERIFIED VIA MUD SCALES THROUGHOUT LEAD CEMENT
Pump Tail Cement	12/06/2011 10:43		8	60.1	60.1		321.0	160 SKS 12.8 PPG 2.11 YIELD 11.75 GAL/SK TAIL CEMENT WEIGHT VERIFIED VIA MUD SCALES THROUGHOUT TAIL CEMENT
Shutdown	12/06/2011 10:52							
Drop Plug	12/06/2011 10:52							PLUG AWAY NO PROBLEMS WASHED UP ON TOP OF PLUG
Pump Displacement	12/06/2011 10:55		10	84.9	84.9		546.0	FRESH WATER
Slow Rate	12/06/2011 11:05		2	70	70		302.0	SLOW RATE TO BUMP PLUG
Bump Plug	12/06/2011 11:12		2	84.9	84.9		823.0	PSI BEFORE BUMPING PLUG 330 PSI BUMPED PLUG UP TO 823 PSI
Check Floats	12/06/2011 11:13							FLOATS HELD 1/2 BBL BACK TO DISPLACEMENT TANKS
End Job	12/06/2011 11:14							GOOD CIRCULATION THROUGHOUT JOB NO PIPE MOVEMENT DURING JOB 24 BBLs CEMENT TO SURFACE
Pre-Rig Down Safety Meeting	12/06/2011 11:20							ALL HES EMPLOYEES
Rig-Down Equipment	12/06/2011 11:30							
Pre-Convoy Safety Meeting	12/06/2011 12:20							ALL HES EMPLOYEES
Crew Leave Location	12/06/2011 12:30							THANK YOU FOR USING HALLIBURTON CEMENT DUSTIN SMITH AND CREW

WILLIAMS PRODUCTION RWF 42-36 9 5/8 SURFACE



Local Event Log

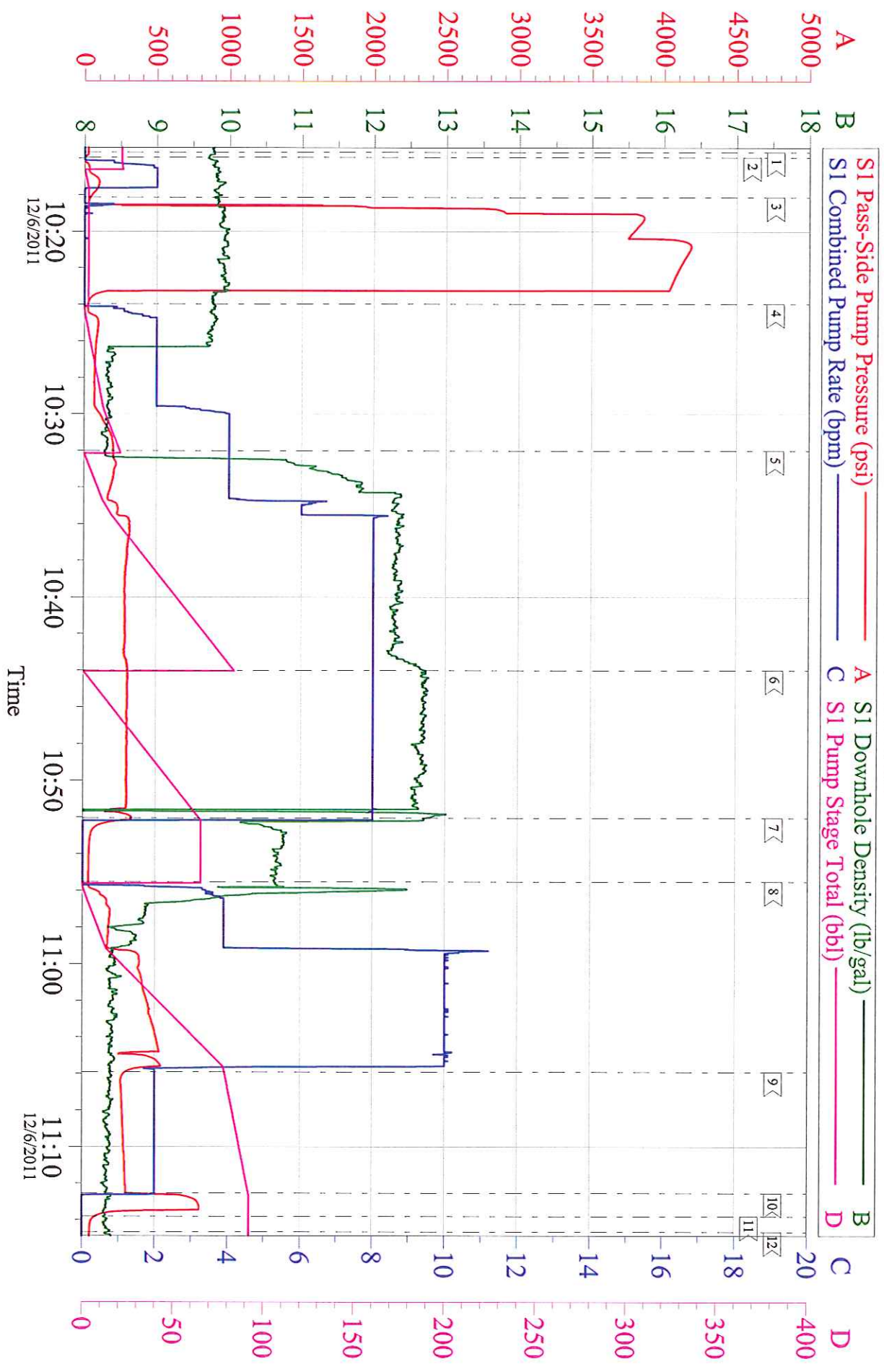
1 START JOB	2 FILL LINES	3 TEST LINES
4 PUMP SPACER	5 PUMP LEAD CEMENT	6 PUMP TAIL CEMENT
7 SHUTDOWN/ DROP PLUG	8 PUMP DISPLACEMENT	9 SLOW RATE
10 BUMP PLUG	11 CHECK FLOATS	12 END JOB
10:15:40	10:32:01	10:18:08
10:23:58	10:55:31	10:43:59
10:52:03	11:13:49	11:05:55
11:12:33		11:14:39

Customer: WILLIAMS PRODUCTION
Well Description: RWF 42-36
Company Rep: AL HARTL

Job Date: 06-Dec-2011
Job Type: 9 5/8 SURFACE
Cement Supervisor: DUSTIN SMITH

Sales Order #: 9055813
ADC Used: YES
Elite #: 5
BRENDAN BURKE

WILLIAMS PRODUCTION RWF 42-36 9 5/8 SURFACE



Customer: WILLIAMS PRODUCTION
Well Description: RWF 42-36
Company Rep: AL HARTL

Job Date: 06-Dec-2011
Job Type: 9 5/8 SURFACE
Cement Supervisor: DUSTIN SMITH

Sales Order #: 9055813
ADC Used: YES
Elite #: 5 BRENDAN BURKE