

The Road to Excellence Starts with Safety

Sold To #: 300721		Ship To #: 2894191		Quote #:		Sales Order #: 9133489	
Customer: WILLIAMS PRODUCTION RMT INC - EBUS				Customer Rep: Mulherin, Seth			
Well Name: RWF		Well #: 531-36		API/UWI #: 05-045-20743			
Field: Rulison		City (SAP): TUPMAN		County/Parish: Garfield		State: Colorado	
Lat: N 39.486 deg. OR N 39 deg. 29 min. 8.027 secs.				Long: W 107.835 deg. OR W -108 deg. 9 min. 52.243 secs.			
Contractor: NABORS 576		Rig/Platform Name/Num: NABORS 576					
Job Purpose: Cement Surface Casing							
Well Type: Development Well				Job Type: Cement Surface Casing			
Sales Person: SCOTT, KYLE		Srv Supervisor: FEUERBORN, JOHN		MBU ID Emp #: 381677			
Job Personnel							
HES Emp Name	Exp Hrs	Emp #	HES Emp Name	Exp Hrs	Emp #	HES Emp Name	Exp Hrs
COURTNEY, TREVOR	4	509351	FEUERBORN, JOHN William	4	381677	JENSEN, JESSE Robert	4
KEANE, JOHN Donovan	4	486519					
Equipment							
HES Unit #	Distance-1 way	HES Unit #	Distance-1 way	HES Unit #	Distance-1 way	HES Unit #	Distance-1 way
10297346	60 mile	10551730C	60 mile	10951248	60 mile	10973571	60 mile
11071559	60 mile						
Job Hours							
Date	On Location Hours	Operating Hours	Date	On Location Hours	Operating Hours	Date	On Location Hours
1/6/12	4	1					
TOTAL		Total is the sum of each column separately					
Job				Job Times			
Formation Name				Date	Time	Time Zone	
Formation Depth (MD)	Top	Bottom		Called Out	05 - Jan - 2012	00:00	MST
Form Type	BHST			On Location	05 - Jan - 2012	23:00	MST
Job depth MD	1170. ft		Job Depth TVD	1170. ft	Job Started	06 - Jan - 2012	02:35
Water Depth			Wk Ht Above Floor	4. ft	Job Completed	06 - Jan - 2012	03:19
Perforation Depth (MD)	From	To		Departed Loc	06 - Jan - 2012	05:00	MST
Well Data							
Description	New / Used	Max pressure psig	Size in	ID in	Weight lbm/ft	Thread	Grade
							Top MD ft
							Bottom MD ft
							Top TVD ft
							Bottom TVD ft
Sales/Rental/3 rd Party (HES)							
Description	Qty	Qty uom	Depth	Supplier			
PLUG,CMTG,TOP,9 5/8,HWE,8.16 MIN/9.06 MA	1	EA					
Tools and Accessories							
Type	Size	Qty	Make	Depth	Type	Size	Qty
Guide Shoe					Packer		
Float Shoe					Bridge Plug		
Float Collar					Retainer		
Insert Float							
Stage Tool							
Miscellaneous Materials							
Gelling Agt	Conc	Surfactant	Conc	Acid Type	Qty	Conc	%
Treatment Fld	Conc	Inhibitor	Conc	Sand Type	Size	Qty	

Fluid Data									
Stage/Plug #: 1									
Fluid #	Stage Type	Fluid Name	Qty	Qty uom	Mixing Density lbm/gal	Yield ft ³ /sk	Mix Fluid Gal/sk	Rate bbl/min	Total Mix Fluid Gal/sk
1	Fresh Water		10.00	bbl	8.33	.0	.0	.0	
2	Lead Cement	VERSACEM (TM) SYSTEM (452010)	160.0	sacks	12.3	2.38	13.75		13.75
		13.75 Gal	FRESH WATER						
3	Tail Cement	VERSACEM (TM) SYSTEM (452010)	160.0	sacks	12.8	2.11	11.75		11.75
		11.75 Gal	FRESH WATER						
4	Displacement Fluid		88.00	bbl	8.34	.0	.0	.0	
Calculated Values		Pressures		Volumes					
Displacement	88	Shut In: Instant		Lost Returns		Cement Slurry	126	Pad	
Top Of Cement	0	5 Min		Cement Returns	15	Actual Displacement		Treatment	
Frac Gradient		15 Min		Spacers	10	Load and Breakdown		Total Job	
Rates									
Circulating		Mixing	8	Displacement	10	Avg. Job			
Cement Left In Pipe	Amount	44 ft	Reason	Shoe Joint					
Frac Ring # 1 @	ID	Frac ring # 2 @	ID	Frac Ring # 3 @	ID	Frac Ring # 4 @	ID		
The Information Stated Herein Is Correct				Customer Representative Signature					

The Road to Excellence Starts with Safety

Sold To #: 300721	Ship To #: 2894191	Quote #:	Sales Order #: 9133489
Customer: WILLIAMS PRODUCTION RMT INC - EBUS	Customer Rep: Mulherin, Seth		
Well Name: RWF	Well #: 531-36	API/UWI #: 05-045-20743	
Field: Rulison	City (SAP): TUPMAN	County/Parish: Garfield	State: Colorado
Legal Description:			
Lat: N 39.486 deg. OR N 39 deg. 29 min. 8.027 secs.		Long: W 107.835 deg. OR W -108 deg. 9 min. 52.243 secs.	
Contractor: NABORS 576	Rig/Platform Name/Num: NABORS 576		
Job Purpose: Cement Surface Casing	Ticket Amount:		
Well Type: Development Well	Job Type: Cement Surface Casing		
Sales Person: SCOTT, KYLE	Srv Supervisor: FEUERBORN, JOHN	MBU ID Emp #: 381677	

Activity Description	Date/Time	Cht #	Rate bbl/min	Volume bbl		Pressure psig		Comments
				Stage	Total	Tubing	Casing	
Pre-Convoy Safety Meeting	01/05/2012 21:00							
Crew Leave Yard	01/05/2012 21:15							
Arrive At Loc	01/05/2012 23:00							
Other	01/06/2012 01:30							SPOT EQUIPMENT
Pre-Rig Up Safety Meeting	01/06/2012 01:40							
Other	01/06/2012 02:00							RIG CIRCULATING WELL
Pre-Job Safety Meeting	01/06/2012 02:10							
Start Job	01/06/2012 02:35							
Test Lines	01/06/2012 02:37							2500psi ON TRUCK AND LINES
Pump Spacer 1	01/06/2012 02:41		4	10			130.0	H2O
Pump Lead Cement	01/06/2012 02:45		8	65.5			290.0	160 sks PUMPED AT 12.3ppg 2.38y 13.75wr TOP OF LEAD 0' bbls TO SURFACE
Pump Tail Cement	01/06/2012 02:55		8	60.1			325.0	160 sks PUMPED AT 12.8ppg 2.11y 11.75wr TOP OF TAIL 510'
Drop Plug	01/06/2012 03:03							PLUG AWAY
Pump Displacement	01/06/2012 03:05		10				600.0	H2O
Other	01/06/2012 03:13		2	78			315.0	SLOW RATE
Bump Plug	01/06/2012 03:19		2	87.8			970.0	

Sold To # : 300721

Ship To # :2894191

Quote # :

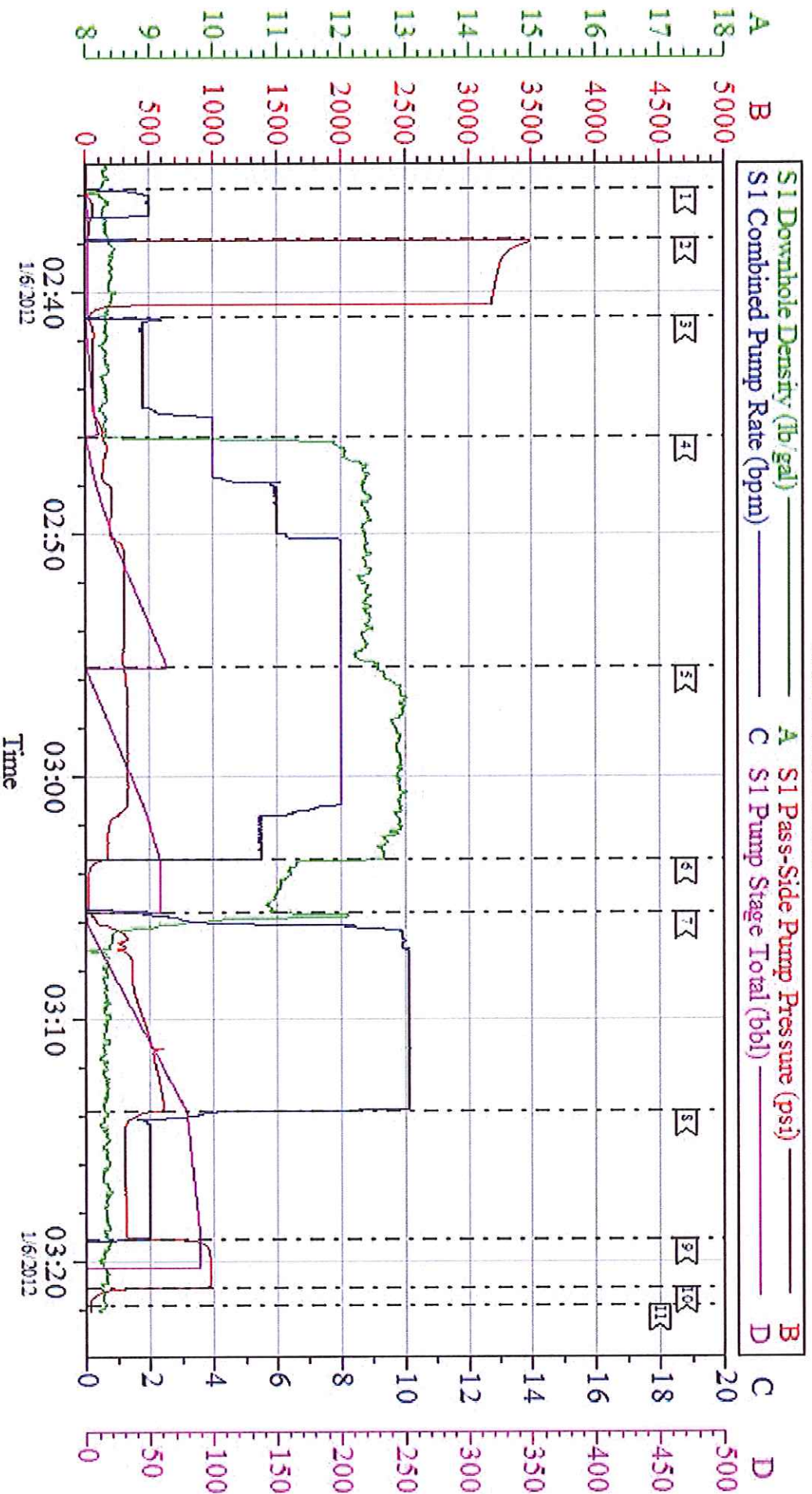
Sales Order # : 9133489

SUMMIT Version: 7.2.27

Monday, January 09, 2012 10:02:00

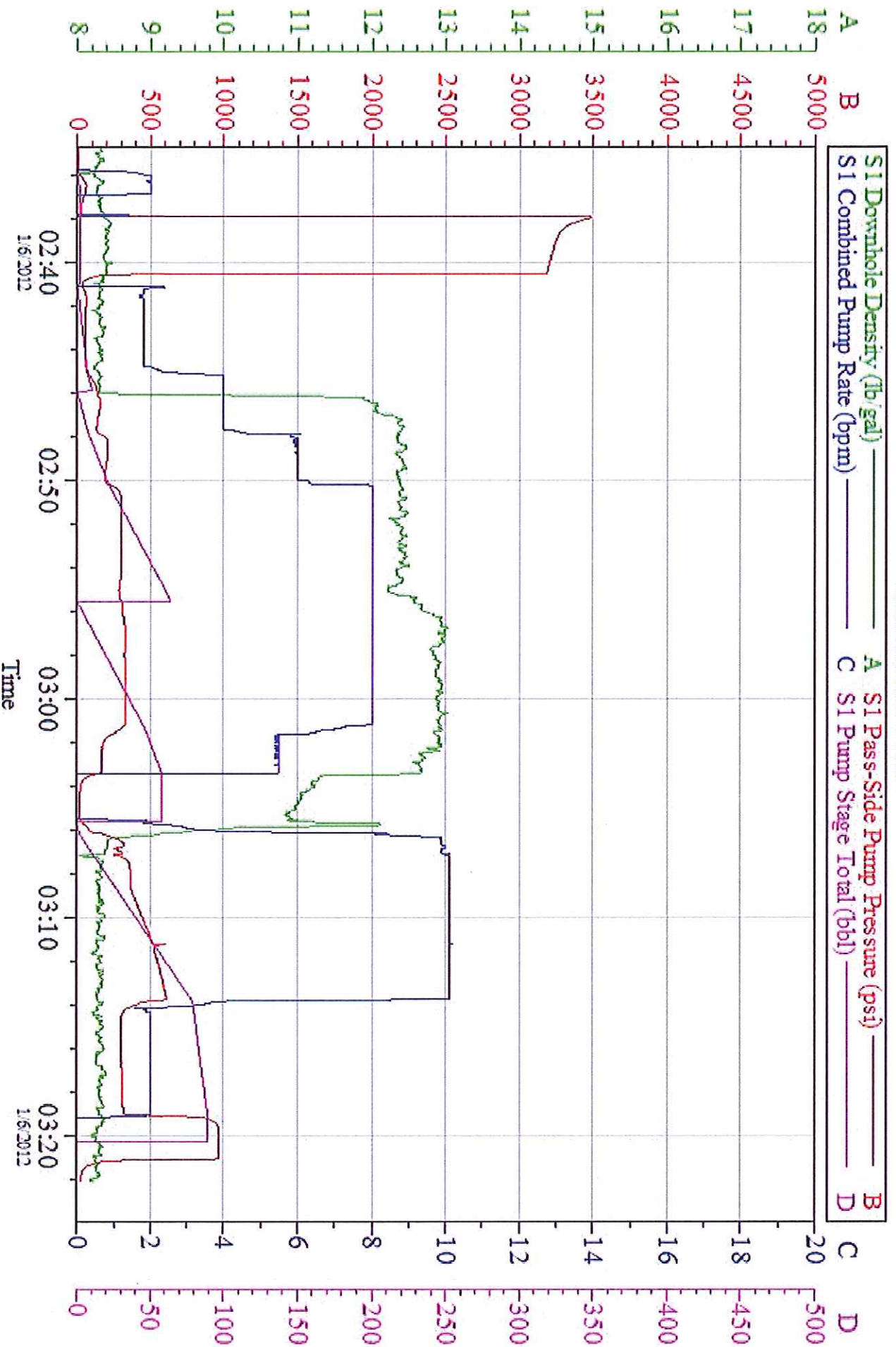
Activity Description	Date/Time	Cht #	Rate bbl/ min	Volume bbl		Pressure psig		Comments
				Stage	Total	Tubing	Casing	
Check Floats	01/06/2012 03:21							HOLDING
End Job	01/06/2012 03:22							GOOD RETURNS PIPE LEFT STATIC 15bbls TO SURFACE
Post-Job Safety Meeting (Pre Rig-Down)	01/06/2012 03:25							
Safety Meeting	01/06/2012 04:45							
Crew Leave Location	01/06/2012 05:00							

WILLIAMS SURFACE 9 5/8



Customer	WILLIAMS	Job Date:	06-Jan-2012	Sales Order #:	9133489
Well Description:	RWF 531-36	Job Type:	SURFACE	ADC Used:	YES
Company Rep:	AL HARTLE	Cement Supervisor:	JOHN FEUERBORN	Elite #:	2
				JESSE JENSEN	

WILLIAMS SURFACE 9 5/8



Customer: WILLIAMS
Well Description: RWF 531-36
Company Rep: AL HARTLE

Job Date: 06-Jan-2012
Job Type: SURFACE
Cement Supervisor: JOHNFUEERBORN

Sales Order #: 9133489
ADC Used: YES
Date: 2 ESSE JENSEN