

*The Road to Excellence Starts with Safety*

Sold To #: 300721	Ship To #: 2770179	Quote #:	Sales Order #: 8562026
Customer: WILLIAMS PRODUCTION RMT INC - EBUS	Customer Rep: Hartl, Al		
Well Name: RWF	Well #: 32-36	API/UWI #: 05-045-20746	
Field: Rulison	City (SAP): MIAMI	County/Parish: Garfield	State: Colorado
Legal Description:			
Lat: N 39.485 deg. OR N 39 deg. 29 min. 7.379 secs.		Long: W 107.836 deg. OR W -108 deg. 9 min. 52.042 secs.	
Contractor: NABORS	Rig/Platform Name/Num: NABORS 576		
Job Purpose: Cement Surface Casing	Ticket Amount:		
Well Type: Development Well	Job Type: Cement Surface Casing		
Sales Person: MAYO, MARK	Srv Supervisor: ROSS, CHARLES	MBU ID Emp #: 453128	

Activity Description	Date/Time	Cht #	Rate bbl/min	Volume bbl		Pressure psig		Comments
				Stage	Total	Tubing	Casing	
Call Out	11/07/2011 20:30							
Pre-Convoy Safety Meeting	11/08/2011 00:20							WITH ALL HES EE'S
Depart from Service Center or Other Site	11/08/2011 00:30							
Arrive at Location from Service Center	11/08/2011 02:30							
Assessment Of Location Safety Meeting	11/08/2011 03:00							WITH ALL HES EE'S
Pre-Rig Up Safety Meeting	11/08/2011 03:15							WITH ALL HES EE'S
Rig-Up Equipment	11/08/2011 03:20							1-F550 PICKUP, 1-ELITE PUMP TRUCK, 1-660 CEMENT BULK TRUCK, 1-CEMENT BODYLOAD (COMPRESSOR BACKUP), 1-HARD LINE TO RIG AND WASH UP OUT TO THE PIT FROM MANIFOLD, 1- 9 5/8" PLUG CONTAINER.
Pre-Job Safety Meeting	11/08/2011 05:44							WITH ALL HES EE'S AND RIG CREW
Start Job	11/08/2011 06:09							TD 1120, 9 5/8 32.3# CASING SET @ 1074.1, SJ 43.7, FC 1060 MW# 8.9, RIG CIRCULATED 30 MIN PRIOR TO CEMENT JOB, HEAD AND CASING CHAINED DOWN BECAUSE OF PSI TO LIFT
Activity Description	Date/Time	Cht	Rate bbl/min	Volume bbl		Pressure psig		Comments

Sold To #: 300721

Ship To #: 2770179

Quote #:

Sales Order #:

8562026

SUMMIT Version: 7.2.27

Saturday, November 12, 2011 10:17:00

		#		Stage	Total	Tubing	Casing	
Pump Water	11/08/2011 06:09		2	2			64.0	FILL LINES, FRESH WATER
Test Lines	11/08/2011 06:11							TEST TO 3000 PSI
Pump Spacer 1	11/08/2011 06:16		4	20			76.0	FRESH WATER
Pump Lead Cement	11/08/2011 06:29		6	67.8			196.0	160 SKS OF VERSACEM PUMPED @ 12.3 PPG, YIELD 2.38, WATER 13.75
Pump Tail Cement	11/08/2011 06:43		8	60.1			390.0	160 SKS OF VERSACEM PUMPED @ 12.8 PPG, YIELD 2.11, WATER 11.75
Shutdown	11/08/2011 06:52							
Drop Plug	11/08/2011 06:58							TOP PLUG, PLUG WENT
Pump Displacement	11/08/2011 06:58		10	73			540.0	FRESH WATER
Slow Rate	11/08/2011 07:01		2	10			220.0	RATE SLOWED 10 BBL PRIOR TO CALCULATED DISPLACEMENT
Bump Plug	11/08/2011 07:14		2		83.5		230.0	PLUG LANDED. PRESSURED UP TO 786 PSI.
Check Floats	11/08/2011 07:16							FLOATS HELD
End Job	11/08/2011 07:17							GOOD RETURNS THROUGHOUT JOB, NO MOVEMENT OF PIPE THROUGHOUT JOB, 26 BBLs OF CEMENT CIRCULATED TO THE PIT=61.3 SKS
Post-Job Safety Meeting (Pre Rig-Down)	11/08/2011 07:20							WITH ALL HES EE'S
Rig-Down Equipment	11/08/2011 07:25							
Pre-Convoy Safety Meeting	11/08/2011 08:20							WITH ALL HES EE'S
Depart Location for Service Center or Other Site	11/08/2011 08:25							THANKS FOR USING GRAND JUNCTION HALLIBURTON CEMENT DEPARTMENT, CHUCK ROSS AND CREW



*The Road to Excellence Starts with Safety*

Sold To #: 300721	Ship To #: 2770179	Quote #:	Sales Order #: 8562026
Customer: WILLIAMS PRODUCTION RMT INC - EBUS	Customer Rep: Hartl, Al		
Well Name: RWF	Well #: 32-36	API/UWI #: 05-045-20746	
Field: Rulison	City (SAP): MIAMI	County/Parish: Garfield	State: Colorado
Lat: N 39.485 deg. OR N 39 deg. 29 min. 7.379 secs.	Long: W 107.836 deg. OR W -108 deg. 9 min. 52.042 secs.		
Contractor: NABORS	Rig/Platform Name/Num: NABORS 576		
Job Purpose: Cement Surface Casing			
Well Type: Development Well	Job Type: Cement Surface Casing		
Sales Person: MAYO, MARK	Srv Supervisor: ROSS, CHARLES	MBU ID Emp #: 453128	

**Job Personnel**

HES Emp Name	Exp Hrs	Emp #	HES Emp Name	Exp Hrs	Emp #	HES Emp Name	Exp Hrs	Emp #
BECK, MICHAEL George	6	489151	DOUT, JACOB J	6	430298	ROSS, CHARLES Raymond	6	453128
SPARKS, CLIFFORD Paul	6	502476						

**Equipment**

HES Unit #	Distance-1 way	HES Unit #	Distance-1 way	HES Unit #	Distance-1 way	HES Unit #	Distance-1 way

**Job Hours**

Date	On Location Hours	Operating Hours	Date	On Location Hours	Operating Hours	Date	On Location Hours	Operating Hours
NOV8, 2011	5	2						

TOTAL Total is the sum of each column separately

**Job**

**Job Times**

Formation Name	Formation Depth (MD)	Top	Bottom	Form Type	Job depth MD	Job Depth TVD	Water Depth	Perforation Depth (MD)	From	To	Called Out	Date	Time	Time Zone
				BHST	1120. ft	1120. ft	6. ft				On Location	08 - Nov - 2011	02:30	MST
											Job Started	08 - Nov - 2011	06:09	MST
											Job Completed	08 - Nov - 2011	07:14	MST
											Departed Loc	08 - Nov - 2011	08:25	MST

**Well Data**

Description	New / Used	Max pressure psig	Size in	ID in	Weight lbm/ft	Thread	Grade	Top MD ft	Bottom MD ft	Top TVD ft	Bottom TVD ft
13 1/2" OPEN HOLE				13.5				.	1120.		
9 5/8" SURFACE CASING	Unknown		9.625	9.001	32.3		H-40	.	1074.1		

**Sales/Rental/3<sup>rd</sup> Party (HES)**

Description	Qty	Qty uom	Depth	Supplier
PLUG,CMTG,TOP,9 5/8,HWE,8.16 MIN/9.06 MA	1	EA		

**Tools and Accessories**

Type	Size	Qty	Make	Depth	Type	Size	Qty	Make	Depth	Type	Size	Qty	Make
Guide Shoe					Packer					Top Plug			
Float Shoe					Bridge Plug					Bottom Plug			
Float Collar					Retainer					SSR plug set			
Insert Float										Plug Container	9 5/8"	1	
Stage Tool										Centralizers			

**Miscellaneous Materials**

Gelling Agt	Conc	Surfactant	Conc	Acid Type	Qty	Conc	%
Treatment Fld	Conc	Inhibitor	Conc	Sand Type	Size	Qty	

**Fluid Data**

Stage/Plug #: 1

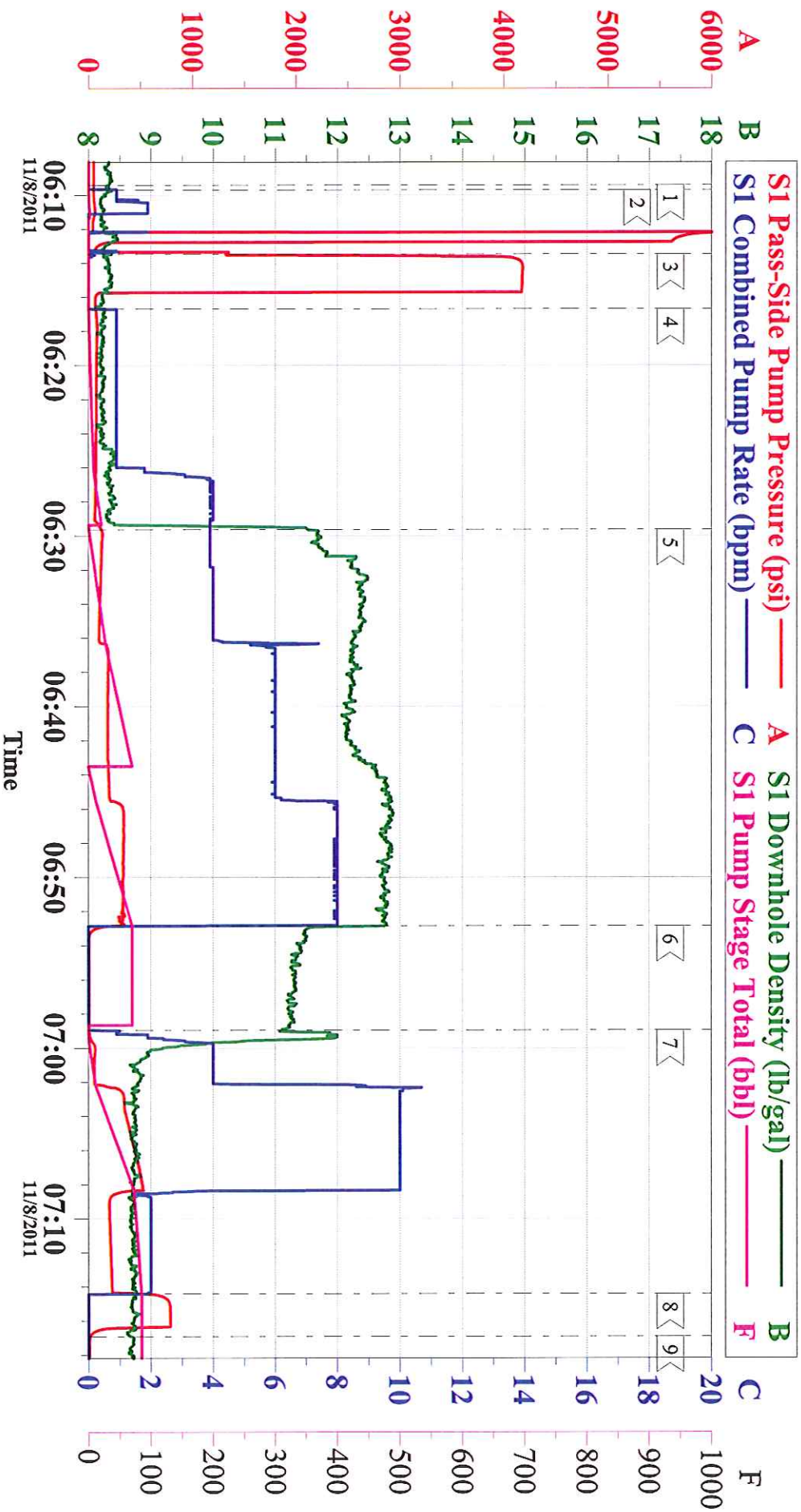
**HALLIBURTON*****Cementing Job Summary***

Fluid #	Stage Type	Fluid Name	Qty	Qty uom	Mixing Density lbm/gal	Yield ft <sup>3</sup> /sk	Mix Fluid Gal/sk	Rate bbl/min	Total Mix Fluid Gal/sk
1	Water Spacer		20.00	bbl	8.34	.0	.0	.0	
2	VersaCem Lead Cement	VERSACEM (TM) SYSTEM (452010)	160.0	sacks	12.3	2.38	13.75		13.75
	13.75 Gal	FRESH WATER							
3	VersaCem Tail Cement	VERSACEM (TM) SYSTEM (452010)	160.0	sacks	12.8	2.11	11.75		11.75
	11.75 Gal	FRESH WATER							
4	Displacement Fluid		83.00	bbl	8.34	.0	.0	.0	
<b>Calculated Values</b>		<b>Pressures</b>		<b>Volumes</b>					
Displacement	3.4	Shut In: Instant		Lost Returns	NONE	Cement Slurry	128	Pad	
Top Of Cement	SURFACE	5 Min		Cement Returns	26	Actual Displacement	83.4	Treatment	
Frac Gradient		15 Min		Spacers	20	Load and Breakdown		Total Job	232
<b>Rates</b>									
Circulating	10	Mixing	7	Displacement	10	Avg. Job			3.6
Cement Left In Pipe	Amount	43.7 ft	Reason	Shoe Joint					
Frac Ring # 1 @	ID	Frac ring # 2 @	ID	Frac Ring # 3 @	ID	Frac Ring # 4 @	ID		
<b>The Information Stated Herein Is Correct</b>				Customer Representative Signature					



# WILLIAMS - RWF 32-36

Surface



## Local Event Log

1 < START JOB	2 < FILL LINES	3 < PRESSURE TEST	06:13:28
4 < PUMP SPACER	5 < PUMP CEMENT	6 < SHUT DOWN	06:52:50
7 < PUMP DISPLACEMENT	8 < BUMP PLUG / SHUT DOWN	9 < END JOB	07:16:55

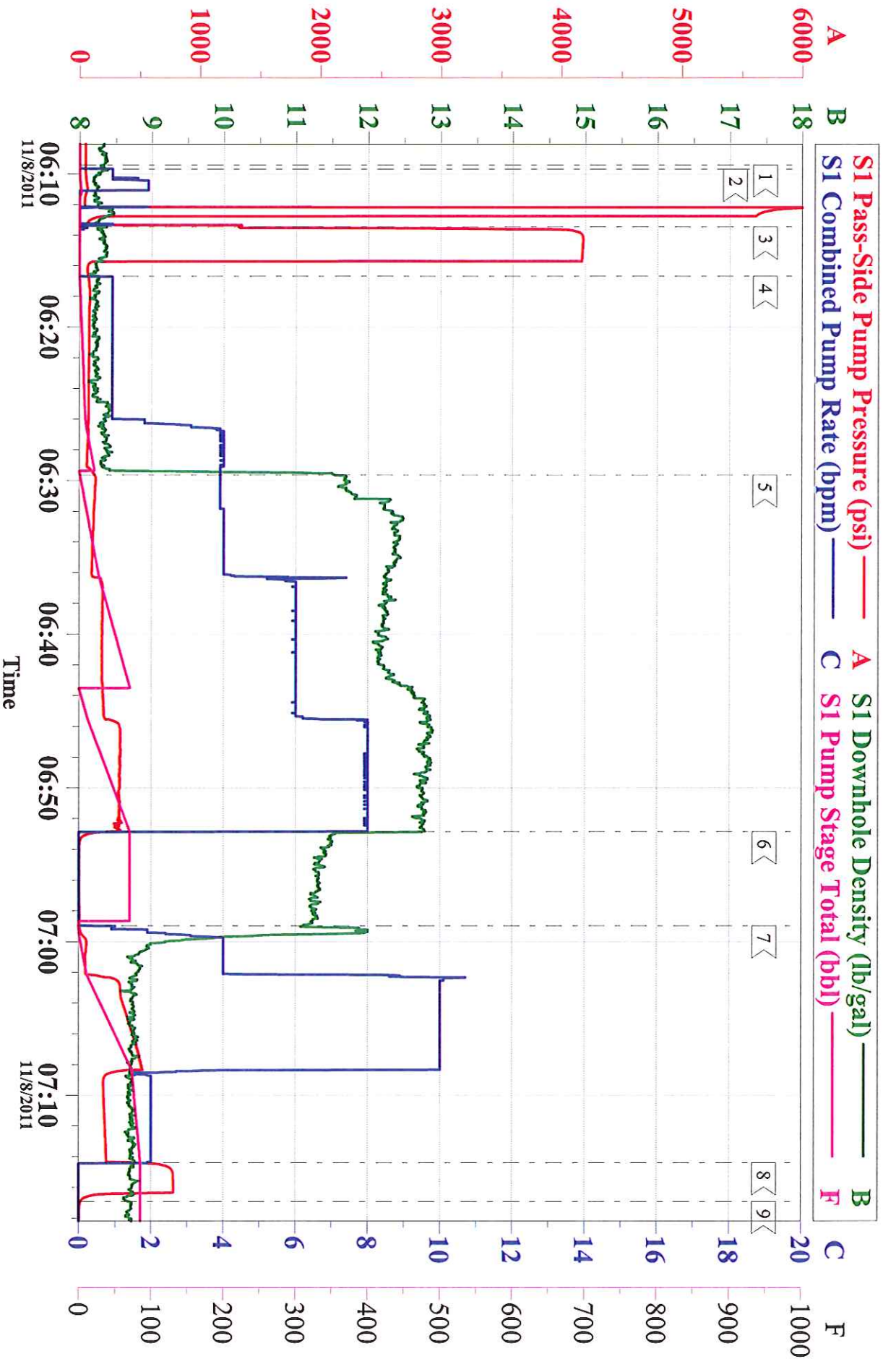
Customer: WILLIAMS  
Well Description: RWF 32-36  
Customer Rep: AL HARTL

Job Date: 08-Nov-2011  
Job type: SURFACE  
Service Supervisor: CHUCK ROSS

Sales Order #: 8562026  
ADC Used: YES  
Operator/ Pump: MIKE BECK

# WILLIAMS - RWF 32-36

Surface



Customer: WILLIAMS  
Well Description: RWF 32-36  
Customer Rep: AL HARTL

Job Date: 08-Nov-2011  
Job type: SURFACE  
Service Supervisor: CHUCK ROSS

Sales Order #: 8562026  
ADC Used: YES  
Operator/ Pump: MIKE BECK