

# Noble Energy

Weld County, CO (NAD 83)

Sec. 19-T3N-R64W (Butterball 19 PAD)

Butterball H24-69HN

Design: MWD Survey

## Sperry Drilling Services Final Survey Report

13 March, 2012

Well Coordinates: 1,323,296.04 N, 3,253,617.61 E (40° 13' 02.21" N, 104° 35' 30.52" W)

Ground Level: 4,774.00 ft

Local Coordinate Origin:

Centered on Well Butterball H24-69HN

Viewing Datum:

KB @ 4798.00ft (Rig KB)

TVDs to System:

N

North Reference:

Grid

Unit System:

API - US Survey Feet - Custom

Geodetic Scale Factor Applied

Version: 2003.16 Build: 43I

**HALLIBURTON**

## Design Report for Butterball H24-69HN - MWD Survey

Measured Depth (ft)	Inclination (°)	Azimuth (°)	Vertical Depth (ft)	+N/-S (ft)	+E/-W (ft)	Vertical Section (ft)	Dogleg Rate (°/100ft)
0.00	0.00	0.00	0.00	0.00	0.00	0.00	0.00
745.00	0.28	297.97	745.00	0.85	-1.61	1.65	0.04
First MWD Survey							
786.00	0.37	3.06	786.00	1.03	-1.69	1.74	0.87
876.00	3.74	15.91	875.93	4.15	-0.87	1.08	3.76
967.00	6.09	10.12	966.59	11.75	0.79	-0.19	2.64
1,061.00	7.69	20.72	1,059.91	22.55	3.89	-2.74	2.17
1,156.00	9.97	29.15	1,153.78	35.68	10.15	-8.32	2.75
1,249.00	11.95	33.51	1,245.08	50.74	19.39	-16.77	2.31
1,343.00	12.79	32.04	1,336.90	67.67	30.28	-26.79	0.95
1,438.00	12.72	33.05	1,429.55	85.35	41.56	-37.15	0.25
1,532.00	13.22	26.50	1,521.16	103.65	52.00	-46.65	1.65
1,626.00	12.08	24.52	1,612.88	122.21	60.88	-54.57	1.30
1,721.00	12.02	28.36	1,705.78	139.96	69.71	-62.47	0.85
1,815.00	12.45	31.67	1,797.65	157.20	79.68	-71.55	0.88
1,909.00	10.85	30.36	1,889.71	173.46	89.47	-80.50	1.73
2,004.00	11.25	29.96	1,982.95	189.20	98.62	-88.83	0.43
2,099.00	10.99	25.99	2,076.17	205.37	107.21	-96.59	0.85
2,193.00	12.56	34.60	2,168.19	221.84	116.94	-105.47	2.50
2,288.00	10.89	34.02	2,261.21	237.78	127.83	-115.53	1.76
2,383.00	12.04	30.77	2,354.31	253.74	137.92	-124.79	1.39
2,478.00	13.43	30.67	2,446.97	271.74	148.62	-134.55	1.46
2,573.00	11.77	26.89	2,539.68	289.87	158.63	-143.63	1.95
2,668.00	10.59	26.17	2,632.88	306.35	166.86	-151.01	1.25
2,763.00	9.80	25.32	2,726.38	321.49	174.17	-157.53	0.85
2,859.00	8.73	25.75	2,821.12	335.44	180.83	-163.47	1.12
2,953.00	6.58	20.89	2,914.28	346.90	185.85	-167.90	2.39
3,048.00	2.42	20.06	3,008.97	353.87	188.48	-170.17	4.38
3,143.00	0.85	62.59	3,103.93	356.08	189.79	-171.37	1.98
3,237.00	0.66	63.30	3,197.92	356.64	190.89	-172.44	0.20
3,332.00	1.18	40.51	3,292.91	357.63	192.02	-173.51	0.66
3,428.00	1.29	22.20	3,388.89	359.38	193.07	-174.47	0.42
3,522.00	0.52	44.15	3,482.87	360.67	193.77	-175.10	0.88
3,617.00	1.11	29.01	3,577.87	361.78	194.51	-175.79	0.66
3,711.00	0.74	13.66	3,671.85	363.17	195.10	-176.31	0.47
3,806.00	1.20	12.00	3,766.84	364.74	195.45	-176.58	0.49
3,901.00	0.68	15.92	3,861.83	366.25	195.81	-176.86	0.55
3,996.00	0.53	355.54	3,956.82	367.23	195.93	-176.93	0.27
4,091.00	0.18	17.16	4,051.82	367.81	195.94	-176.91	0.39
4,186.00	0.50	325.27	4,146.82	368.30	195.75	-176.69	0.44
4,281.00	0.48	311.55	4,241.81	368.90	195.21	-176.13	0.12
4,379.00	0.58	313.50	4,339.81	369.52	194.55	-175.43	0.10
4,474.00	0.53	309.43	4,434.80	370.13	193.86	-174.71	0.07
4,569.00	0.44	277.96	4,529.80	370.46	193.16	-174.00	0.29
4,664.00	1.12	317.86	4,624.79	371.19	192.17	-172.98	0.88
4,759.00	0.26	223.39	4,719.79	371.73	191.40	-172.18	1.23
4,855.00	1.10	159.71	4,815.78	370.70	191.57	-172.40	1.05
4,949.00	1.85	152.40	4,909.75	368.51	192.59	-173.53	0.82
5,044.00	2.05	161.01	5,004.69	365.55	193.85	-174.94	0.37
5,139.00	1.66	160.23	5,099.64	362.65	194.87	-176.11	0.41

## Design Report for Butterball H24-69HN - MWD Survey

Measured Depth (ft)	Inclination (°)	Azimuth (°)	Vertical Depth (ft)	+N/-S (ft)	+E/-W (ft)	Vertical Section (ft)	Dogleg Rate (°/100ft)
5,235.00	1.80	130.00	5,195.60	360.37	196.50	-177.85	0.95
5,330.00	1.48	133.31	5,290.56	358.57	198.53	-179.97	0.35
5,425.00	1.50	153.63	5,385.53	356.61	199.98	-181.51	0.55
5,519.00	1.40	156.21	5,479.50	354.46	200.99	-182.63	0.13
5,614.00	1.35	176.00	5,574.47	352.28	201.53	-183.29	0.50
5,709.00	1.26	151.04	5,669.45	350.25	202.12	-183.98	0.60
5,804.00	1.44	140.20	5,764.42	348.42	203.39	-185.34	0.33
5,899.00	1.34	140.80	5,859.40	346.64	204.85	-186.89	0.11
5,994.00	0.59	101.69	5,954.38	345.68	206.03	-188.12	1.01
6,106.00	0.60	106.71	6,066.38	345.40	207.16	-189.26	0.05
6,184.00	0.80	112.11	6,144.37	345.07	208.06	-190.17	0.27
6,279.00	4.78	274.80	6,239.28	345.16	204.72	-186.84	5.84
6,326.00	8.68	273.74	6,285.94	345.55	199.23	-181.33	8.30
6,375.00	12.86	267.10	6,334.07	345.52	190.09	-172.21	8.88
6,422.00	17.23	269.99	6,379.45	345.25	177.90	-160.05	9.43
6,469.00	20.77	270.10	6,423.88	345.26	162.60	-144.77	7.53
6,516.00	25.60	273.15	6,467.07	345.84	144.12	-126.28	10.59
6,564.00	30.78	274.24	6,509.37	347.31	121.50	-103.61	10.84
6,611.00	34.63	274.30	6,548.91	349.21	96.18	-78.23	8.19
6,659.00	38.53	274.61	6,587.45	351.43	67.67	-49.64	8.13
6,706.00	42.60	274.38	6,623.14	353.82	37.20	-19.09	8.67
6,754.00	46.31	273.23	6,657.40	356.04	3.67	14.51	7.91
6,801.00	48.93	269.41	6,689.08	356.82	-31.03	49.20	8.19
6,849.00	52.31	266.93	6,719.54	355.61	-68.10	86.16	8.09
6,896.00	56.73	268.01	6,746.81	353.93	-106.33	124.25	9.59
6,944.00	60.38	267.40	6,771.85	352.29	-147.24	165.03	7.68
6,991.00	63.41	268.13	6,793.98	350.68	-188.66	206.31	6.59
7,039.00	64.37	268.71	6,815.11	349.49	-231.74	249.28	2.28
7,086.00	65.92	268.09	6,834.86	348.30	-274.37	291.79	3.51
7,133.00	69.82	268.80	6,852.57	347.12	-317.88	335.19	8.41
7,180.00	72.19	268.42	6,867.86	346.04	-362.31	379.50	5.10
7,254.00	79.94	267.79	6,885.67	343.66	-434.04	451.01	10.51
7,308.00	84.57	268.97	6,892.95	342.15	-487.51	504.33	8.84
7,343.00	86.51	267.97	6,895.67	341.22	-522.39	539.12	6.23
7,438.00	88.09	267.20	6,900.14	337.22	-617.19	633.60	1.85
7,533.00	88.98	266.92	6,902.57	332.35	-712.03	728.07	0.98
7,628.00	89.01	267.13	6,904.24	327.42	-806.89	822.55	0.22
7,723.00	87.91	268.81	6,906.79	324.06	-901.79	917.16	2.11
7,818.00	89.20	270.04	6,909.19	323.10	-996.75	1,011.95	1.88
7,913.00	90.71	271.17	6,909.26	324.11	-1,091.74	1,106.87	1.99
8,008.00	89.01	273.12	6,909.49	327.66	-1,186.67	1,201.85	2.72
8,103.00	90.00	273.21	6,910.31	332.91	-1,281.52	1,296.84	1.05
8,198.00	89.11	271.47	6,911.05	336.79	-1,376.43	1,391.83	2.06
8,293.00	91.51	271.98	6,910.54	339.65	-1,471.38	1,486.80	2.58
8,387.00	90.52	270.69	6,908.87	341.84	-1,565.34	1,580.75	1.73
8,482.00	88.64	267.97	6,909.57	340.72	-1,660.32	1,675.54	3.48
8,577.00	89.01	267.73	6,911.52	337.16	-1,755.23	1,770.15	0.46
8,672.00	91.57	267.48	6,911.04	333.19	-1,850.14	1,864.73	2.71
8,767.00	92.22	267.07	6,907.89	328.68	-1,944.98	1,959.22	0.81
8,862.00	90.06	265.13	6,906.00	322.22	-2,039.73	2,053.52	3.06
8,957.00	90.96	269.67	6,905.16	317.91	-2,134.60	2,148.05	4.87



## Design Report for Butterball H24-69HN - MWD Survey

Measured Depth (ft)	Inclination (°)	Azimuth (°)	Vertical Depth (ft)	+N/-S (ft)	+E/-W (ft)	Vertical Section (ft)	Dogleg Rate (°/100ft)
9,052.00	86.14	267.39	6,907.56	315.48	-2,229.50	2,242.70	5.61
9,147.00	91.42	267.41	6,909.58	311.17	-2,324.35	2,337.21	5.56
9,242.00	93.89	270.24	6,905.18	309.22	-2,419.21	2,431.84	3.95
9,337.00	92.46	269.46	6,899.92	308.97	-2,514.06	2,526.56	1.71
9,432.00	87.20	268.75	6,900.20	307.49	-2,609.02	2,621.31	5.59
9,527.00	88.89	269.12	6,903.44	305.72	-2,703.94	2,716.02	1.82
9,623.00	89.35	268.79	6,904.92	303.97	-2,799.91	2,811.78	0.59
9,718.00	88.33	269.29	6,906.84	302.38	-2,894.88	2,906.54	1.20
9,812.00	90.40	269.26	6,907.88	301.19	-2,988.86	3,000.34	2.20
9,907.00	91.69	268.87	6,906.15	299.64	-3,083.83	3,095.11	1.42
10,002.00	90.12	268.34	6,904.65	297.33	-3,178.79	3,189.82	1.74
10,097.00	91.23	268.46	6,903.53	294.68	-3,273.74	3,284.52	1.18
10,192.00	86.70	268.53	6,905.25	292.18	-3,368.67	3,379.19	4.77
10,287.00	88.09	268.19	6,909.56	289.47	-3,463.53	3,473.79	1.51
10,382.00	90.22	268.01	6,910.97	286.32	-3,558.46	3,568.44	2.25
10,477.00	91.39	268.39	6,909.63	283.34	-3,653.40	3,663.10	1.29
10,572.00	90.59	267.33	6,907.99	279.79	-3,748.32	3,757.72	1.40
10,667.00	90.22	268.68	6,907.32	276.48	-3,843.26	3,852.36	1.47
10,762.00	89.48	271.05	6,907.57	276.26	-3,938.25	3,947.22	2.61
10,856.00	90.59	271.34	6,907.51	278.22	-4,032.23	4,041.17	1.22
10,951.00	89.29	270.43	6,907.61	279.69	-4,127.21	4,136.11	1.67
11,046.00	90.12	270.26	6,908.10	280.26	-4,222.21	4,231.01	0.89
11,141.00	89.38	270.36	6,908.51	280.77	-4,317.21	4,325.91	0.79
11,236.00	90.65	270.14	6,908.49	281.19	-4,412.21	4,420.81	1.36
11,331.00	89.60	268.99	6,908.28	280.46	-4,507.20	4,515.64	1.64
11,427.00	88.52	269.12	6,909.86	278.88	-4,603.17	4,611.41	1.13
11,522.00	89.20	268.88	6,911.75	277.22	-4,698.14	4,706.16	0.76
11,616.00	90.28	268.14	6,912.17	274.78	-4,792.10	4,799.88	1.39
11,712.00	89.97	269.20	6,911.96	272.55	-4,888.08	4,895.62	1.15
11,806.00	91.08	268.67	6,911.10	270.80	-4,982.05	4,989.38	1.31
11,931.00	94.04	268.32	6,905.52	267.53	-5,106.87	5,113.87	2.38
Final MWD Survey							
11,992.00	94.04	268.32	6,901.22	265.74	-5,167.69	5,174.52	0.00
Survey Projection to TD - Estimated BHL: 76' FSL, 2133' FEL							

Design Annotations

Measured Depth (ft)	Vertical Depth (ft)	Local Coordinates		Comment
		+N/-S (ft)	+E/-W (ft)	
745.00	745.00	0.85	-1.61	First MWD Survey
11,931.00	6,905.52	267.53	-5,106.87	Final MWD Survey
11,992.00	6,901.22	265.74	-5,167.69	Survey Projection to TD
11,992.00	6,901.22	265.74	-5,167.69	Estimated BHL: 76' FSL, 2133' FEL

Vertical Section Information

Angle Type	Target	Azimuth (°)	Origin Type	Origin		Start TVD (ft)
				+N/-S (ft)	+E/-W (ft)	
Target	Butterball H24-69HN_PlanA - Rev2_BHL Tgt	272.93	Slot	0.00	0.00	0.00

## Design Report for Butterball H24-69HN - MWD Survey

### Survey tool program

From (ft)	To (ft)	Survey/Plan	Survey Tool
745.00	11,992.00	MWD Surveys	MWD

### Targets

Target Name - hit/miss target - Shape	Dip Angle (°)	Dip Dir. (°)	TVD (ft)	+N/-S (ft)	+E/-W (ft)	Northing (ft)	Easting (ft)	Latitude	Longitude
Butterball	0.00	0.00	2.00	0.46	44.68	1,323,296.50	3,253,662.29	40° 13' 2.208 N	104° 35' 29.940 W
- actual wellpath misses target center by 44.68ft at 1.90ft MD (1.90 TVD, 0.00 N, 0.00 E)									
- Polygon									
Point 1				2,057.68	305.46	1,323,601.49	3,255,675.21		
Point 2				-3,035.32	213.46	1,323,509.49	3,250,582.42		
Point 3				-3,066.32	5,510.46	1,328,806.27	3,250,551.43		
Point 4				2,017.68	5,605.46	1,328,901.26	3,255,635.21		
Point 5				2,057.68	305.46	1,323,601.49	3,255,675.21		
Butterball	0.00	0.00	2.00	0.46	44.68	1,323,296.50	3,253,662.29	40° 13' 2.208 N	104° 35' 29.940 W
- actual wellpath misses target center by 44.68ft at 1.90ft MD (1.90 TVD, 0.00 N, 0.00 E)									
- Polygon									
Point 1				2,057.68	305.46	1,323,601.49	3,255,675.21		
Point 2				2,084.68	-5,002.54	1,318,293.72	3,255,702.20		
Point 3				-3,001.32	-5,090.54	1,318,205.72	3,250,616.42		
Point 4				-3,035.32	213.46	1,323,509.49	3,250,582.42		
Point 5				2,057.68	305.46	1,323,601.49	3,255,675.21		
Butterball	0.00	0.00	2.00	0.46	44.68	1,323,296.50	3,253,662.29	40° 13' 2.208 N	104° 35' 29.940 W
- actual wellpath misses target center by 44.68ft at 1.90ft MD (1.90 TVD, 0.00 N, 0.00 E)									
- Polygon									
Point 1				1,597.68	-154.54	1,323,141.51	3,255,215.23		
Point 2				1,624.68	-4,542.54	1,318,753.70	3,255,242.22		
Point 3				-2,541.32	-4,630.54	1,318,665.70	3,251,076.40		
Point 4				-2,575.32	-246.54	1,323,049.51	3,251,042.40		
Point 5				1,597.68	-154.54	1,323,141.51	3,255,215.23		
Butterball	0.00	0.00	0.00	0.00	0.00	1,323,296.04	3,253,617.61	40° 13' 2.208 N	104° 35' 30.516 W
- actual wellpath hits target center									
- Polygon									
Point 1				-3,494.94	673.30	1,323,969.32	3,250,122.82		
Point 2				-7,699.95	626.67	1,323,922.69	3,245,918.00		
Point 3				-7,712.57	4,977.67	1,328,273.50	3,245,905.38		
Point 4				-3,525.56	5,050.31	1,328,346.13	3,250,092.21		
Point 5				-3,494.94	673.30	1,323,969.32	3,250,122.82		
Butterball	0.00	0.00	0.00	0.00	0.00	1,323,296.04	3,253,617.61	40° 13' 2.208 N	104° 35' 30.516 W
- actual wellpath hits target center									
- Polygon									
Point 1				-3,034.98	213.26	1,323,509.30	3,250,582.76		
Point 2				-8,159.99	166.71	1,323,462.75	3,245,457.98		
Point 3				-8,172.53	5,437.71	1,328,733.52	3,245,445.44		
Point 4				-3,065.52	5,510.27	1,328,806.07	3,250,552.23		
Point 5				-3,034.98	213.26	1,323,509.30	3,250,582.76		
Butterball	0.00	0.00	2.00	0.46	44.68	1,323,296.50	3,253,662.29	40° 13' 2.208 N	104° 35' 29.940 W
- actual wellpath misses target center by 44.68ft at 1.90ft MD (1.90 TVD, 0.00 N, 0.00 E)									
- Polygon									
Point 1				1,597.68	765.46	1,324,061.47	3,255,215.23		
Point 2				-2,575.32	673.46	1,323,969.47	3,251,042.40		
Point 3				-2,606.32	5,050.46	1,328,346.28	3,251,011.41		
Point 4				1,557.68	5,145.46	1,328,441.28	3,255,175.23		
Point 5				1,597.68	765.46	1,324,061.47	3,255,215.23		
Butterball	0.00	0.00	6,909.00	264.49	-5,175.05	1,323,560.53	3,248,442.79	40° 13' 5.340 N	104° 36' 37.188 W
- actual wellpath misses target center by 10.78ft at 11992.00ft MD (6901.22 TVD, 265.74 N, -5167.69 E)									
- Point									

**North Reference Sheet for Sec. 19-T3N-R64W (Butterball 19 PAD) - Butterball H24-69HN**

All data is in US Feet unless otherwise stated. Directions and Coordinates are relative to Grid North Reference.

Vertical Depths are relative to KB @ 4798.00ft (Rig KB). Northing and Easting are relative to Butterball H24-69HN

Coordinate System is US State Plane 1983, Colorado Northern Zone using datum North American Datum 1983, ellipsoid GRS 1980

Projection method is Lambert Conformal Conic (2 parallel)

Central Meridian is 105° 30' 0.000 W°, Longitude Origin: 0° 0' 0.000 E°, Latitude Origin: 40° 47' 0.000 N°

False Easting: 3,000,000.00ft, False Northing: 1,000,000.00ft, Scale Reduction: 0.99995702

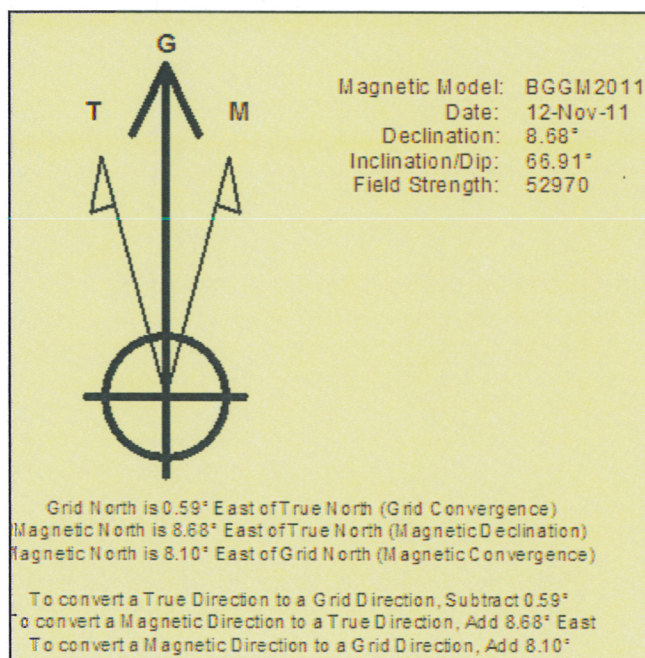
Grid Coordinates of Well: 1,323,296.04 ft N, 3,253,617.61 ft E

Geographical Coordinates of Well: 40° 13' 02.21" N, 104° 35' 30.52" W

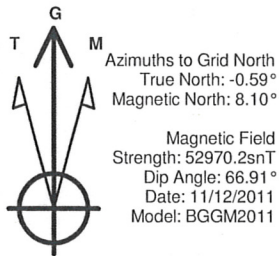
Grid Convergence at Surface is: 0.59°

Based upon Minimum Curvature type calculations, at a Measured Depth of 11,992.00ft  
the Bottom Hole Displacement is 5,174.52ft in the Direction of 272.94° (Grid).

Magnetic Convergence at surface is: -8.10° (12 November 2011, , BGGM2011)



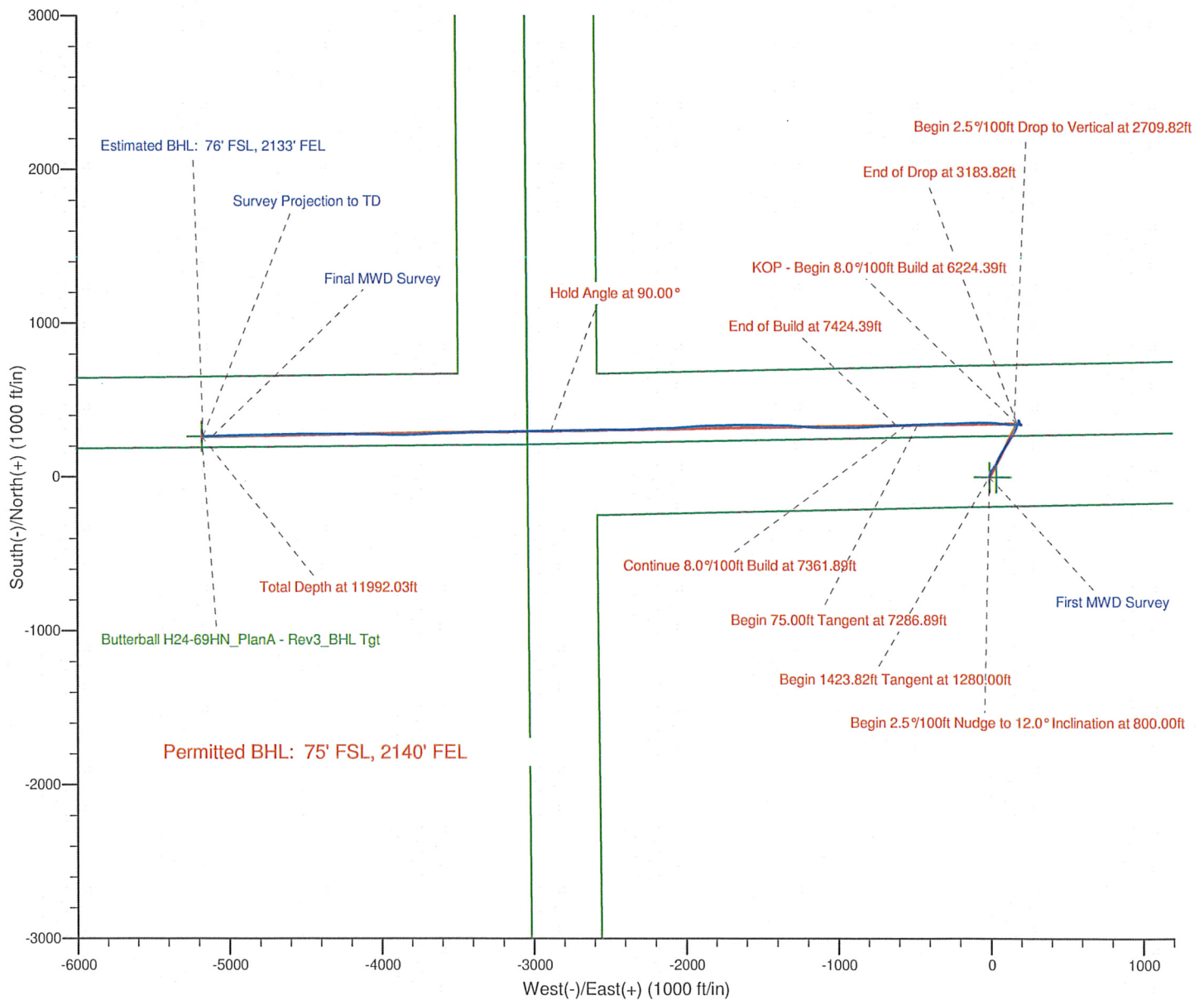




### LEGEND

- Butterball H24-69HN, Plan A, Plan A - Rev 3 Proposal V0
- MWD Survey

Halliburton Energy Services, Inc. ("Halliburton") recently completed directional drilling and MWD operations at the Butterball H24-69HN well located at Weld County, CO. At the conclusion of the job Halliburton performed a final survey on the well. Noble Energy has requested that Halliburton provide them the distances from BHL to section lines from that final survey to allow Noble Energy to meet its requirements under Colorado law. These distances are generated by a mathematical algorithm based on rough data collected after the well is drilled. Halliburton considers it to be a rough estimate only and it is not to be relied upon in any application where accurate data is required. In consideration for Halliburton releasing this data to Noble Energy, Noble Energy agrees to release Halliburton from any consequences of it or anyone else relying on such data.



Project: Weld County, CO (NAD 83)  
Site: Sec. 19-T3N-R64W (Butterball 19 PAD)  
Well: Butterball H24-69HN

## Noble Energy

**HALLIBURTON**  
Sperry Drilling



Azimuths to Grid North  
True North:  $-0.59^\circ$   
Magnetic North:  $8.10^\circ$

Magnetic Field  
Strength: 52970.2nT  
Dip Angle:  $66.91^\circ$   
Date: 11/12/2011  
Model: BGGM2011

### LEGEND

- Butterball H24-69HN, Plan A, Plan A - Rev 3 Proposal V0
- MWD Survey

Halliburton Energy Services, Inc. ("Halliburton") recently completed directional drilling and MWD operations at the Butterball H24-69HN well located at Weld County, CO. At the conclusion of the job Halliburton performed a final survey on the well. Noble Energy has requested that Halliburton provide them the distances from BHL to section lines from that final survey to allow Noble Energy to meet its requirements under Colorado law. These distances are generated by a mathematical algorithm based on rough data collected after the well is drilled. Halliburton considers it to be a rough estimate only and it is not to be relied upon in any application where accurate data is required. In consideration for Halliburton releasing this data to Noble Energy, Noble Energy agrees to release Halliburton from any consequences of it or anyone else relying on such data.

