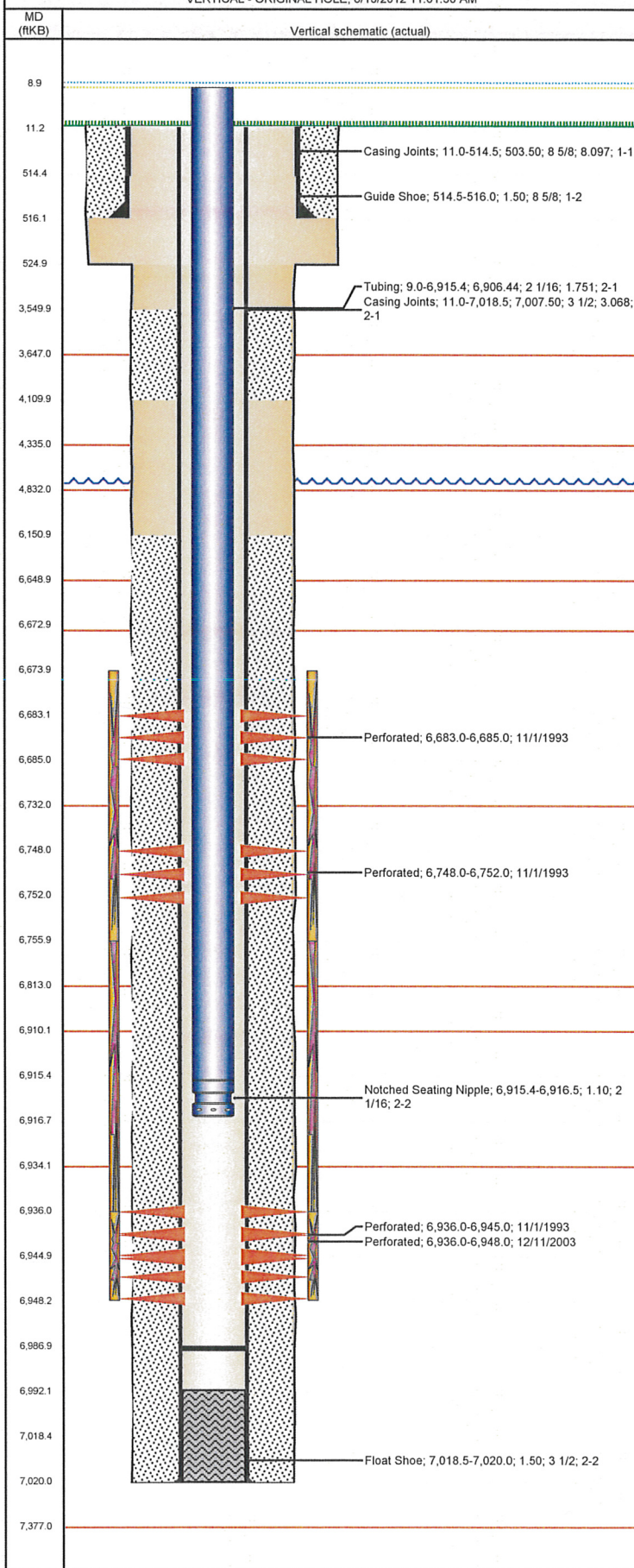


Well Name: HANSCOME 28-06

VERTICAL - ORIGINAL HOLE, 8/13/2012 11:01:50 AM



## Well Header

API 05-123-17496	Business Unit WATTENBERG	District 15	Well Config VERTICAL
Original KB Elevation (ft) 4,761.00	KB - GL / MSL (ftKB) 11.00	Spud Date 10/13/1993	P & A Date

Comment  
NO CEMENT BOND LOG IN FILE; NO CASING TEST INFORMATION

Directions To Well  
WCR 42 & WCR 53, W 1/2, S 4/10, W- INTO

Current PBTD (ftKB)  
ORIGINAL HOLE - 6,987.0

## Surface Location (Congressional)

Quarter 1	Quarter 2	Quarter 3	Quarter 4	Section	Township	Twnshp N...	Range	Rng E/W Dir
		SE	NW	28	4	N	64	W

## Bottom Hole Location

North-South Distance (ft)	From N or S Line	East-West Distance (ft)	From E or W Line
---------------------------	------------------	-------------------------	------------------

## Plug Back Total Depths

Date	Depth (ftKB)	Method	Com
10/20/1993	6,992.0	CASING TALLY	GUIDE SHOE
11/1/1993	6,979.0	CASED HOLE LOG	DEPTH LOGGER

## Wellbore Sections

Section Des	Size (in)	Act Top (ftKB)	Act Btm (ftKB)
SURFACE	12 1/4	11.0	525.0
PRODUCTION	7 7/8	525.0	7,020.0

## Zone Statuses

Zone Name	Status Date	Status	Job
NIOBRARA	11/14/1993	PR	DRILLING/COMPLETION - ORIGINAL, 10/13/1993 00:00
NIOBRARA	3/6/2012	PR	TRI-FRAC, 2/22/2012 11:00
CODELL	11/14/1993	PR	DRILLING/COMPLETION - ORIGINAL, 10/13/1993 00:00
CODELL	12/19/2003	PR	RE-FRAC, 12/10/2003 00:00
CODELL	3/6/2012	PR	TRI-FRAC, 2/22/2012 11:00

## Casing Strings

Csg Des	Run Date	OD (in)	Wt/Len (lb/ft)	Grade	Top (ftKB)	Set Depth (ftKB)
Surface	10/14/1993	8 5/8	24.00	M-50	11.0	516.0
Production	10/20/1993	3 1/2	7.70	M-75	11.0	7,020.0

## Cement

Des	Top (ftKB)	Btm (ftKB)
SURFACE CASING CEMENT	11.0	516.0
PRODUCTION CASING CEMENT	3,550.0	4,110.0
PRODUCTION CASING CEMENT	6,151.0	7,020.0

## Tubing Components

Item Des	OD (in)	Wt (lb/ft)	Grade	Jts	Len (ft)
Tubing	2 1/16	3.25	J-55	213	6,906.44
Notched Seating Nipple	2 1/16		J-55	1	1.10

## Perforation Data

Zone	Bnch/St g	Entered Shot Total	Top (ftKB)	Btm (ftKB)	Date
NIOBRARA-CODELL, ORIGINAL...	A	2	6,683.0	6,685.0	11/1/1993
NIOBRARA-CODELL, ORIGINAL...	B	4	6,748.0	6,752.0	11/1/1993
CODELL, ORIGINAL HOLE		48	6,936.0	6,948.0	12/11/2003
CODELL, ORIGINAL HOLE		9	6,936.0	6,945.0	11/1/1993

## Stimulations & Treatments

Bnch/Stg	Date	Zone	Primary Job Type
	11/8/1993	NIOBRARA-CODELL, ORIGINAL HOLE	DRILLING/COMPLETION - ORIGINAL

Comment

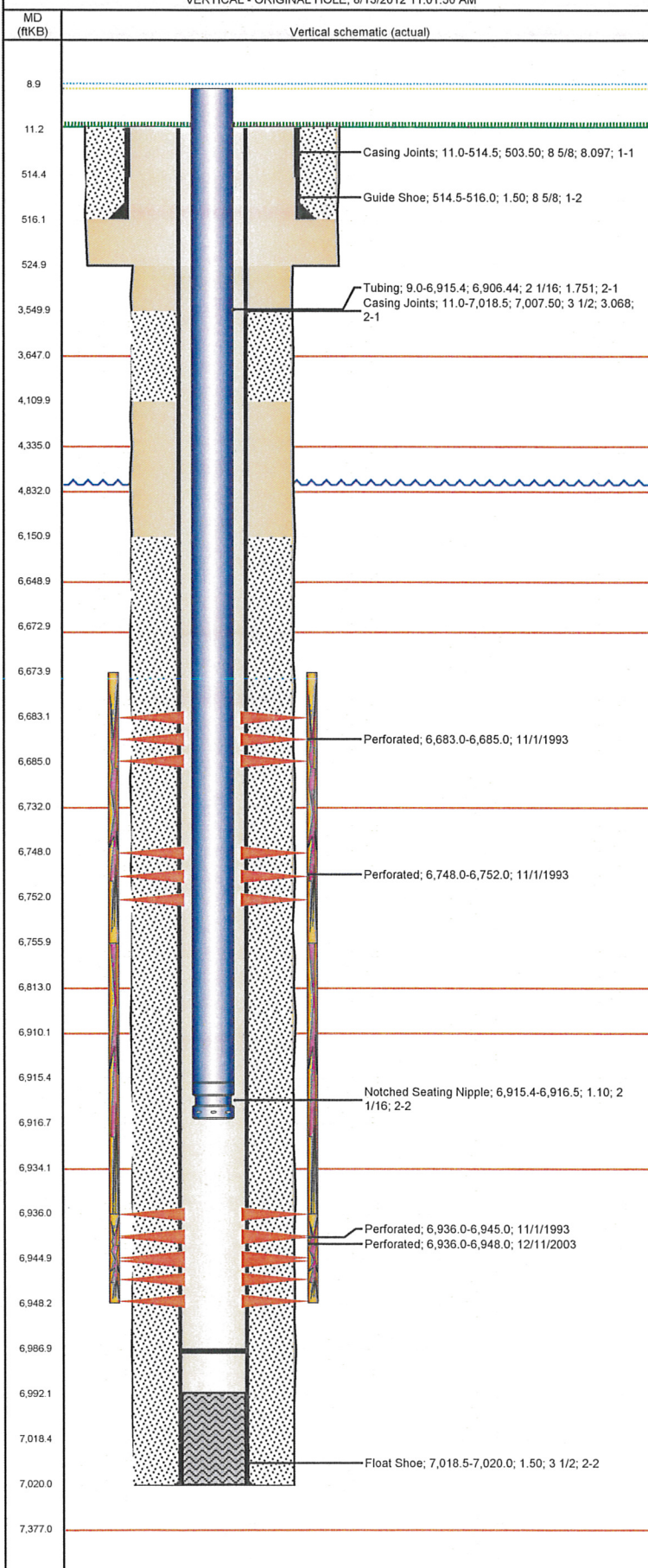
Total Add Amount	Total Clean Volume...	Vol Slurry Tot (gal)	Vol Gas Tot (MCF)
Proppant Bulk Sand 416000 lb		110922.00	

Avg Treat Pressure (psi)	Max Treat Pressure (psi)	Avg Treat Rate (bbl/min)	Max Treat Rate (bbl/min)
5,000.0	5,400.0	24.80	25.00



Well Name: HANSCOME 28-06

VERTICAL - ORIGINAL HOLE, 8/13/2012 11:01:50 AM



## Stimulations & Treatments

Bnch/Stg	Date	Zone	Primary Job Type		
	12/18/2003	CODELL, ORIGINAL HOLE	RE-FRAC		
Comment					
Total Add Amount		Total Clean Volume...	Vol Slurry Tot (gal)	Vol Gas Tot (MCF)	
Proppant Ottawa 245500 lb			128940.00		
Avg Treat Pressure (psi)		Max Treat Pressure (psi)	Avg Treat Rate (bbl/min)	Max Treat Rate (bbl/min)	
7,430.0		7,870.0	14.20	14.50	
Bnch/Stg	Date	Zone	Primary Job Type		
	3/3/2012	CODELL, ORIGINAL HOLE	TRI-FRAC		
Comment					
(CODELL TF)- BREAK 4933@ 14.8, ISIP 3654, 5 MIN 3179, OPEN PERF 44, PERF FRIC 155, NWB 422,PIPE FRIC 750. POST ISIP 3590 POST , 5 MIN 3521, AVER TEMP 62.66 , AVER VISC 29.9, AVER PH 10.24. TREATMENT WENT WELL, NO ISSUE TO REPORT.					
Total Add Amount		Total Clean Volume...	Vol Slurry Tot (gal)	Vol Gas Tot (MCF)	
Proppant Ottawa 245482.896 lb		130310.88	141441.30		
Avg Treat Pressure (psi)		Max Treat Pressure (psi)	Avg Treat Rate (bbl/min)	Max Treat Rate (bbl/min)	
4,242.0		4,983.0	18.50	19.20	
Bnch/Stg	Date	Zone	Primary Job Type		
	3/3/2012	NIOBRARA, ORIGINAL HOLE	TRI-FRAC		
Comment					
(NIOBRARA) - NO BREAK OBSERVED, ISIP 3832. POST ISIP 3976, POST 5 MIN 3737. AVER TEMP 66.9, AVER VISC 21.1, AVER PH 10.29. PLUG STICK IN HOLE WITH GUNS ON TOP. GUNS WERE NOT FIRED. PUSHED ACID THROUGH EXISTING PERFS WITH ENOUGH RATE TO CONTINUE WITH JOB. TREATMENT WENT WELL NO OTHER ISSUES TO REPORT.					
Total Add Amount		Total Clean Volume...	Vol Slurry Tot (gal)	Vol Gas Tot (MCF)	
Proppant Ottawa 249019.5 lb		147825.72	159102.30		
Avg Treat Pressure (psi)		Max Treat Pressure (psi)	Avg Treat Rate (bbl/min)	Max Treat Rate (bbl/min)	
5,995.0		6,267.0	32.20	35.50	
Other In Hole					
Run Date	Des		OD (in)	Top (ftKB)	Btm (ftKB)
Logs					
Date	Type		Top (ftKB)	Btm (ftKB)	
10/20/1993	COMPENSATED NEUTRON		11.0	6,988.0	
11/1/1993	GAMMA RAY/CCL		6,500.0	6,970.0	