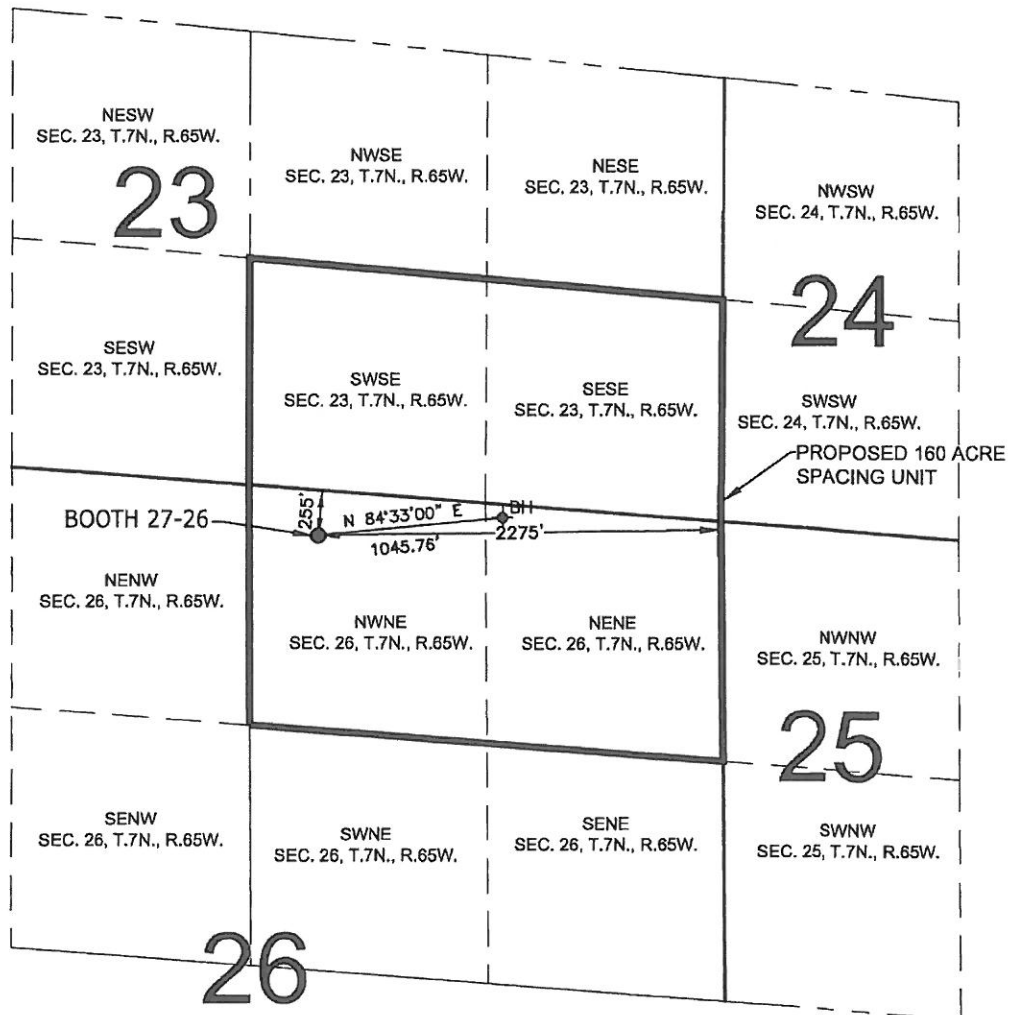


PROPOSED 318 Ae SPACING UNIT

SECTION 26, TOWNSHIP 7 NORTH, RANGE 65 WEST, 6TH P.M.



WELL BOOTH 27-26 TO BE LOCATED 255' FNL AND 2275' FEL, T7N, R65W, SEC. 26

SURFACE LOCATION

LATITUDE= 40.552205°

LONGITUDE= 104.628755°

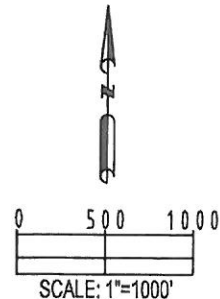
BOTTOM HOLE LOCATION

LATITUDE= 40.552450°

LONGITUDE= 104.625005°

LEGEND

- = EXISTING MONUMENT
 = BOTTOM HOLE
 BH = BOTTOM HOLE
 = PROPOSED WELL
 = EXISTING WELL



PREPARED BY



FIELD DATE:

03-20-12

DRAWING DATE

07-26-12

BY:

CLM

CHECKED:

RDW

SURFACE LOCATION:

NW 1/4 NE 1/4,

SEC. 26, T7N, R65W

WELD COUNTY, COLORADO