

ENSIGN

Directional

Well Name: Booth 27-26

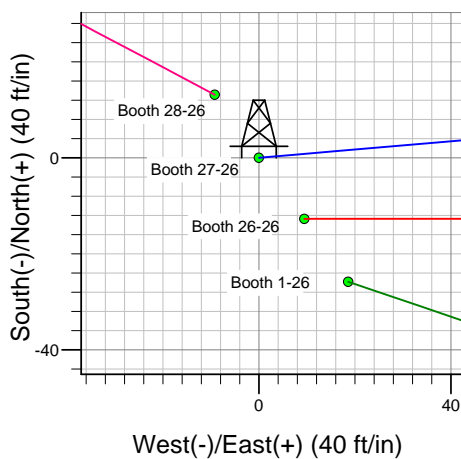
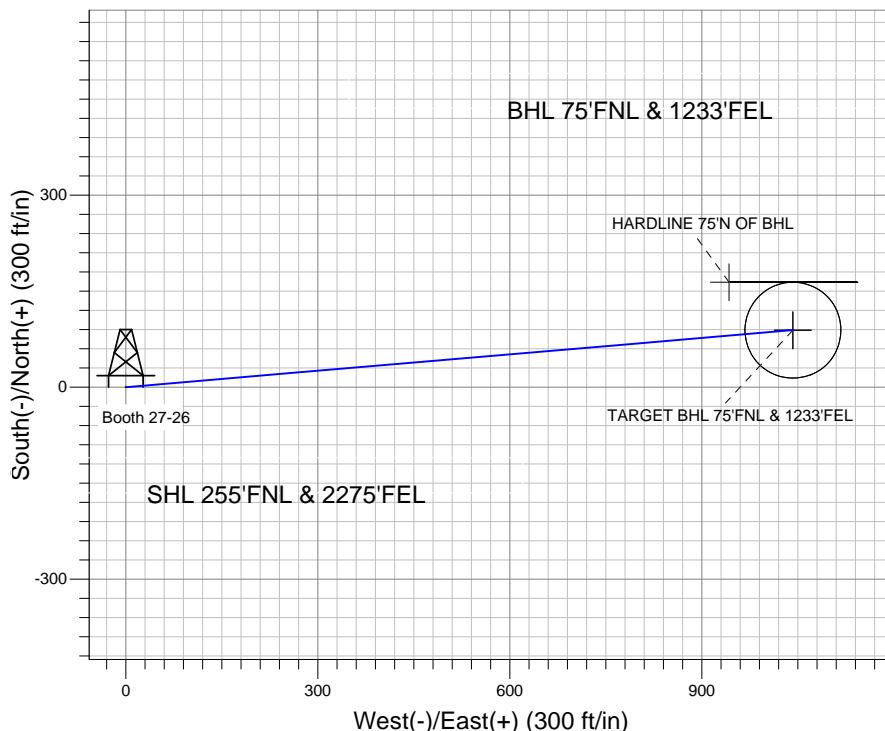
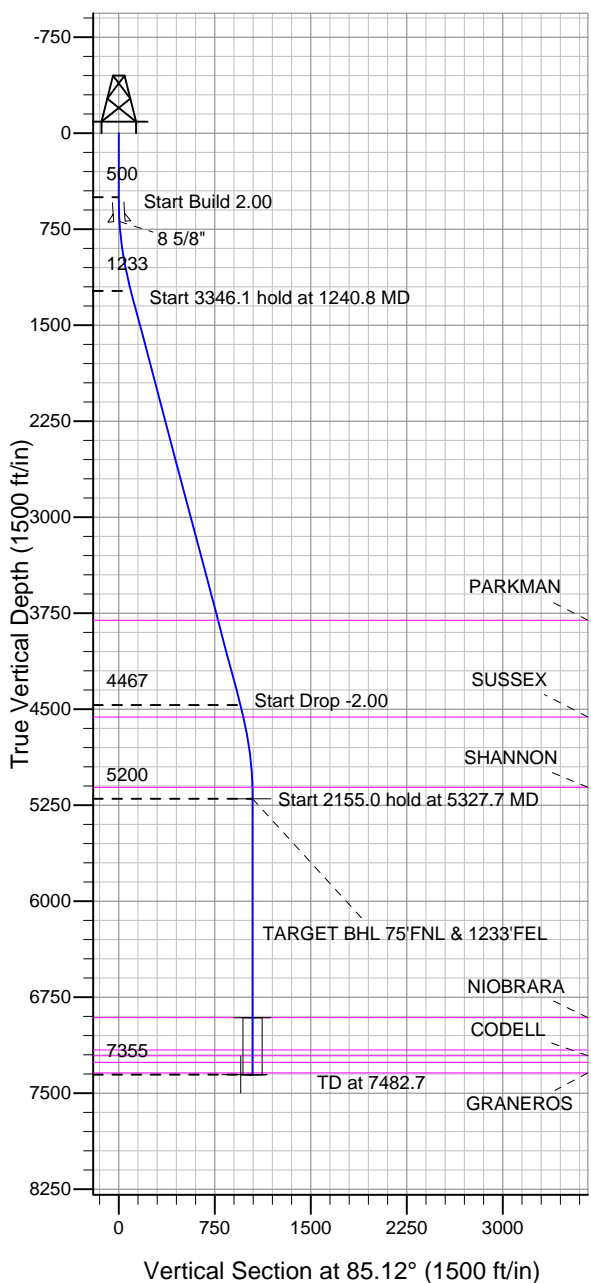
Surface Location: Booth 4 Pad Sec.26-T7N-R65W
 North American Datum 1983 US State Plane 1983 Colorado Northern Zone

Ground Elevation: 4891.0

+N/-S	+E/-W	Northing	Easting	Latitude	Longitude	Slot
0.0	0.0	1445198.53	3242102.07	40.552205	-104.628755	

Original Well Elev WELL @ 4907.0ft (Original Well Elev)

BAYSWATER EXPLORATION & PRODUCTION



Booth 4 Pad Sec.26-T7N-R65W
 Booth 27-26
 Plan #1 (5-17-12)
 13:30, May 31 2012



Azimuths to True North
 Magnetic North: 8.67°

Magnetic Field
 Strength: 53123.6nT
 Dip Angle: 67.16°
 Date: 5/31/2012
 Model: IGRF2010

WELLBORE TARGET DETAILS (LAT/LONG)

Name	TVD	+N/-S	+E/-W	Latitude	Longitude	Shape
TARGET BHL 75'FNL & 1233'FEL	5200.0	88.9	1042.4	40.552449	-104.625004	Point
TARGET CIRCLE 75'FNL & 1233'FEL	6911.0	88.9	1042.4	40.552449	-104.625004	Circle (Radius: 75.0)
HARDLINE 75'N OF BHL	7355.0	163.9	942.4	40.552655	-104.625364	Polygon

SECTION DETAILS

Sec	MD	Inc	Azi	TVD	+N/-S	+E/-W	DLeg	TFace	VSec	Target
1	0.0	0.00	0.00	0.0	0.0	0.0	0.00	0.00	0.0	
2	500.0	0.00	0.00	500.0	0.0	0.0	0.00	0.00	0.0	
3	1240.8	14.82	85.12	1232.6	8.1	94.9	2.00	85.12	95.3	
4	4586.9	14.82	85.12	4467.4	80.8	947.5	0.00	0.00	950.9	
5	5327.7	0.00	0.00	5200.0	88.9	1042.4	2.00	180.00	1046.2	TARGET BHL 75'FNL & 1233'FEL
6	7482.7	0.00	0.00	7355.0	88.9	1042.4	0.00	0.00	1046.2	



Directional

BAYSWATER EXPLORATION & PRODUCTION

SEC.26-T7N-R65W

Booth 4 Pad Sec.26-T7N-R65W

Booth 27-26

Wellbore #1

Plan: Plan #1 (5-17-12)

Standard Planning Report

31 May, 2012

Database:	Landmark	Local Co-ordinate Reference:	Well Booth 27-26
Company:	BAYSWATER EXPLORATION & PRODUCTION	TVD Reference:	WELL @ 4907.0ft (Original Well Elev)
Project:	SEC.26-T7N-R65W	MD Reference:	WELL @ 4907.0ft (Original Well Elev)
Site:	Booth 4 Pad Sec.26-T7N-R65W	North Reference:	True
Well:	Booth 27-26	Survey Calculation Method:	Minimum Curvature
Wellbore:	Wellbore #1		
Design:	Plan #1 (5-17-12)		

Project	SEC.26-T7N-R65W, Weld County, CO		
Map System:	US State Plane 1983	System Datum:	Mean Sea Level
Geo Datum:	North American Datum 1983		Using Well Reference Point
Map Zone:	Colorado Northern Zone		Using geodetic scale factor

Site	Booth 4 Pad Sec.26-T7N-R65W		
Site Position:		Northing:	1,445,211.57 ft
From:	Lat/Long	Easting:	3,242,092.77 ft
Position Uncertainty:	0.0 ft	Slot Radius:	"
		Latitude:	40.552241
		Longitude:	-104.628788
		Grid Convergence:	0.56 °

Well	Booth 27-26		
Well Position	+N/-S	-13.1 ft	Northing:
	+E/-W	9.2 ft	Easting:
Position Uncertainty		0.0 ft	Wellhead Elevation:
			ft
			Latitude:
			40.552205
			Longitude:
			-104.628755
			Ground Level:
			4,891.0 ft

Wellbore	Wellbore #1				
Magnetics	Model Name	Sample Date	Declination (°)	Dip Angle (°)	Field Strength (nT)
	IGRF2010	5/17/2012	8.68	67.16	53,128

Design	Plan #1 (5-17-12)			
Audit Notes:				
Version:	Phase:	PROTOTYPE	Tie On Depth:	0.0
Vertical Section:	Depth From (TVD) (ft)	+N/-S (ft)	+E/-W (ft)	Direction (°)
	0.0	0.0	0.0	85.12

Plan Sections										
Measured Depth (ft)	Inclination (°)	Azimuth (°)	Vertical Depth (ft)	+N/-S (ft)	+E/-W (ft)	Dogleg Rate (°/100ft)	Build Rate (°/100ft)	Turn Rate (°/100ft)	TFO (°)	Target
0.0	0.00	0.00	0.0	0.0	0.0	0.00	0.00	0.00	0.00	
500.0	0.00	0.00	500.0	0.0	0.0	0.00	0.00	0.00	0.00	
1,240.8	14.82	85.12	1,232.6	8.1	94.9	2.00	2.00	0.00	85.12	
4,586.9	14.82	85.12	4,467.4	80.8	947.5	0.00	0.00	0.00	0.00	
5,327.7	0.00	0.00	5,200.0	88.9	1,042.4	2.00	-2.00	0.00	180.00	TARGET BHL 75'FI
7,482.7	0.00	0.00	7,355.0	88.9	1,042.4	0.00	0.00	0.00	0.00	

Database:	Landmark	Local Co-ordinate Reference:	Well Booth 27-26
Company:	BAYSWATER EXPLORATION & PRODUCTION	TVD Reference:	WELL @ 4907.0ft (Original Well Elev)
Project:	SEC.26-T7N-R65W	MD Reference:	WELL @ 4907.0ft (Original Well Elev)
Site:	Booth 4 Pad Sec.26-T7N-R65W	North Reference:	True
Well:	Booth 27-26	Survey Calculation Method:	Minimum Curvature
Wellbore:	Wellbore #1		
Design:	Plan #1 (5-17-12)		

Planned Survey									
Measured Depth (ft)	Inclination (°)	Azimuth (°)	Vertical Depth (ft)	+N/-S (ft)	+E/-W (ft)	Vertical Section (ft)	Dogleg Rate (°/100ft)	Build Rate (°/100ft)	Turn Rate (°/100ft)
0.0	0.00	0.00	0.0	0.0	0.0	0.0	0.00	0.00	0.00
40.0	0.00	0.00	40.0	0.0	0.0	0.0	0.00	0.00	0.00
80.0	0.00	0.00	80.0	0.0	0.0	0.0	0.00	0.00	0.00
120.0	0.00	0.00	120.0	0.0	0.0	0.0	0.00	0.00	0.00
160.0	0.00	0.00	160.0	0.0	0.0	0.0	0.00	0.00	0.00
200.0	0.00	0.00	200.0	0.0	0.0	0.0	0.00	0.00	0.00
240.0	0.00	0.00	240.0	0.0	0.0	0.0	0.00	0.00	0.00
280.0	0.00	0.00	280.0	0.0	0.0	0.0	0.00	0.00	0.00
320.0	0.00	0.00	320.0	0.0	0.0	0.0	0.00	0.00	0.00
360.0	0.00	0.00	360.0	0.0	0.0	0.0	0.00	0.00	0.00
400.0	0.00	0.00	400.0	0.0	0.0	0.0	0.00	0.00	0.00
440.0	0.00	0.00	440.0	0.0	0.0	0.0	0.00	0.00	0.00
480.0	0.00	0.00	480.0	0.0	0.0	0.0	0.00	0.00	0.00
500.0	0.00	0.00	500.0	0.0	0.0	0.0	0.00	0.00	0.00
520.0	0.40	85.12	520.0	0.0	0.1	0.1	2.00	2.00	0.00
560.0	1.20	85.12	560.0	0.1	0.6	0.6	2.00	2.00	0.00
600.0	2.00	85.12	600.0	0.1	1.7	1.7	2.00	2.00	0.00
640.0	2.80	85.12	639.9	0.3	3.4	3.4	2.00	2.00	0.00
680.0	3.60	85.12	679.9	0.5	5.6	5.7	2.00	2.00	0.00
690.1	3.80	85.12	690.0	0.5	6.3	6.3	2.00	2.00	0.00
8 5/8"									
720.0	4.40	85.12	719.8	0.7	8.4	8.4	2.00	2.00	0.00
760.0	5.20	85.12	759.6	1.0	11.7	11.8	2.00	2.00	0.00
800.0	6.00	85.12	799.5	1.3	15.6	15.7	2.00	2.00	0.00
840.0	6.80	85.12	839.2	1.7	20.1	20.2	2.00	2.00	0.00
880.0	7.60	85.12	878.9	2.1	25.1	25.2	2.00	2.00	0.00
920.0	8.40	85.12	918.5	2.6	30.6	30.7	2.00	2.00	0.00
960.0	9.20	85.12	958.0	3.1	36.7	36.9	2.00	2.00	0.00
1,000.0	10.00	85.12	997.5	3.7	43.4	43.5	2.00	2.00	0.00
1,040.0	10.80	85.12	1,036.8	4.3	50.6	50.7	2.00	2.00	0.00
1,080.0	11.60	85.12	1,076.0	5.0	58.3	58.5	2.00	2.00	0.00
1,120.0	12.40	85.12	1,115.2	5.7	66.6	66.8	2.00	2.00	0.00
1,160.0	13.20	85.12	1,154.2	6.4	75.4	75.7	2.00	2.00	0.00
1,200.0	14.00	85.12	1,193.1	7.2	84.8	85.1	2.00	2.00	0.00
1,240.0	14.80	85.12	1,231.8	8.1	94.7	95.0	2.00	2.00	0.00
1,240.8	14.82	85.12	1,232.6	8.1	94.9	95.3	2.00	2.00	0.00
1,280.0	14.82	85.12	1,270.5	8.9	104.9	105.3	0.00	0.00	0.00
1,320.0	14.82	85.12	1,309.1	9.8	115.1	115.5	0.00	0.00	0.00
1,360.0	14.82	85.12	1,347.8	10.7	125.3	125.7	0.00	0.00	0.00
1,400.0	14.82	85.12	1,386.5	11.6	135.5	136.0	0.00	0.00	0.00
1,440.0	14.82	85.12	1,425.1	12.4	145.7	146.2	0.00	0.00	0.00
1,480.0	14.82	85.12	1,463.8	13.3	155.9	156.4	0.00	0.00	0.00
1,520.0	14.82	85.12	1,502.5	14.2	166.0	166.6	0.00	0.00	0.00
1,560.0	14.82	85.12	1,541.2	15.0	176.2	176.9	0.00	0.00	0.00
1,600.0	14.82	85.12	1,579.8	15.9	186.4	187.1	0.00	0.00	0.00
1,640.0	14.82	85.12	1,618.5	16.8	196.6	197.3	0.00	0.00	0.00
1,680.0	14.82	85.12	1,657.2	17.6	206.8	207.6	0.00	0.00	0.00
1,720.0	14.82	85.12	1,695.8	18.5	217.0	217.8	0.00	0.00	0.00
1,760.0	14.82	85.12	1,734.5	19.4	227.2	228.0	0.00	0.00	0.00
1,800.0	14.82	85.12	1,773.2	20.3	237.4	238.2	0.00	0.00	0.00
1,840.0	14.82	85.12	1,811.8	21.1	247.6	248.5	0.00	0.00	0.00
1,880.0	14.82	85.12	1,850.5	22.0	257.8	258.7	0.00	0.00	0.00
1,920.0	14.82	85.12	1,889.2	22.9	268.0	268.9	0.00	0.00	0.00

Database:	Landmark	Local Co-ordinate Reference:	Well Booth 27-26
Company:	BAYSWATER EXPLORATION & PRODUCTION	TVD Reference:	WELL @ 4907.0ft (Original Well Elev)
Project:	SEC.26-T7N-R65W	MD Reference:	WELL @ 4907.0ft (Original Well Elev)
Site:	Booth 4 Pad Sec.26-T7N-R65W	North Reference:	True
Well:	Booth 27-26	Survey Calculation Method:	Minimum Curvature
Wellbore:	Wellbore #1		
Design:	Plan #1 (5-17-12)		

Planned Survey									
Measured Depth (ft)	Inclination (°)	Azimuth (°)	Vertical Depth (ft)	+N/-S (ft)	+E/-W (ft)	Vertical Section (ft)	Dogleg Rate (°/100ft)	Build Rate (°/100ft)	Turn Rate (°/100ft)
1,960.0	14.82	85.12	1,927.9	23.7	278.2	279.2	0.00	0.00	0.00
2,000.0	14.82	85.12	1,966.5	24.6	288.3	289.4	0.00	0.00	0.00
2,040.0	14.82	85.12	2,005.2	25.5	298.5	299.6	0.00	0.00	0.00
2,080.0	14.82	85.12	2,043.9	26.3	308.7	309.8	0.00	0.00	0.00
2,120.0	14.82	85.12	2,082.5	27.2	318.9	320.1	0.00	0.00	0.00
2,160.0	14.82	85.12	2,121.2	28.1	329.1	330.3	0.00	0.00	0.00
2,200.0	14.82	85.12	2,159.9	28.9	339.3	340.5	0.00	0.00	0.00
2,240.0	14.82	85.12	2,198.5	29.8	349.5	350.8	0.00	0.00	0.00
2,280.0	14.82	85.12	2,237.2	30.7	359.7	361.0	0.00	0.00	0.00
2,320.0	14.82	85.12	2,275.9	31.6	369.9	371.2	0.00	0.00	0.00
2,360.0	14.82	85.12	2,314.6	32.4	380.1	381.4	0.00	0.00	0.00
2,400.0	14.82	85.12	2,353.2	33.3	390.3	391.7	0.00	0.00	0.00
2,440.0	14.82	85.12	2,391.9	34.2	400.5	401.9	0.00	0.00	0.00
2,480.0	14.82	85.12	2,430.6	35.0	410.6	412.1	0.00	0.00	0.00
2,520.0	14.82	85.12	2,469.2	35.9	420.8	422.4	0.00	0.00	0.00
2,560.0	14.82	85.12	2,507.9	36.8	431.0	432.6	0.00	0.00	0.00
2,600.0	14.82	85.12	2,546.6	37.6	441.2	442.8	0.00	0.00	0.00
2,640.0	14.82	85.12	2,585.2	38.5	451.4	453.1	0.00	0.00	0.00
2,680.0	14.82	85.12	2,623.9	39.4	461.6	463.3	0.00	0.00	0.00
2,720.0	14.82	85.12	2,662.6	40.3	471.8	473.5	0.00	0.00	0.00
2,760.0	14.82	85.12	2,701.3	41.1	482.0	483.7	0.00	0.00	0.00
2,800.0	14.82	85.12	2,739.9	42.0	492.2	494.0	0.00	0.00	0.00
2,840.0	14.82	85.12	2,778.6	42.9	502.4	504.2	0.00	0.00	0.00
2,880.0	14.82	85.12	2,817.3	43.7	512.6	514.4	0.00	0.00	0.00
2,920.0	14.82	85.12	2,855.9	44.6	522.8	524.7	0.00	0.00	0.00
2,960.0	14.82	85.12	2,894.6	45.5	532.9	534.9	0.00	0.00	0.00
3,000.0	14.82	85.12	2,933.3	46.3	543.1	545.1	0.00	0.00	0.00
3,040.0	14.82	85.12	2,972.0	47.2	553.3	555.3	0.00	0.00	0.00
3,080.0	14.82	85.12	3,010.6	48.1	563.5	565.6	0.00	0.00	0.00
3,120.0	14.82	85.12	3,049.3	48.9	573.7	575.8	0.00	0.00	0.00
3,160.0	14.82	85.12	3,088.0	49.8	583.9	586.0	0.00	0.00	0.00
3,200.0	14.82	85.12	3,126.6	50.7	594.1	596.3	0.00	0.00	0.00
3,240.0	14.82	85.12	3,165.3	51.6	604.3	606.5	0.00	0.00	0.00
3,280.0	14.82	85.12	3,204.0	52.4	614.5	616.7	0.00	0.00	0.00
3,320.0	14.82	85.12	3,242.6	53.3	624.7	626.9	0.00	0.00	0.00
3,360.0	14.82	85.12	3,281.3	54.2	634.9	637.2	0.00	0.00	0.00
3,400.0	14.82	85.12	3,320.0	55.0	645.1	647.4	0.00	0.00	0.00
3,440.0	14.82	85.12	3,358.7	55.9	655.2	657.6	0.00	0.00	0.00
3,480.0	14.82	85.12	3,397.3	56.8	665.4	667.9	0.00	0.00	0.00
3,520.0	14.82	85.12	3,436.0	57.6	675.6	678.1	0.00	0.00	0.00
3,560.0	14.82	85.12	3,474.7	58.5	685.8	688.3	0.00	0.00	0.00
3,600.0	14.82	85.12	3,513.3	59.4	696.0	698.5	0.00	0.00	0.00
3,640.0	14.82	85.12	3,552.0	60.2	706.2	708.8	0.00	0.00	0.00
3,680.0	14.82	85.12	3,590.7	61.1	716.4	719.0	0.00	0.00	0.00
3,720.0	14.82	85.12	3,629.3	62.0	726.6	729.2	0.00	0.00	0.00
3,760.0	14.82	85.12	3,668.0	62.9	736.8	739.5	0.00	0.00	0.00
3,800.0	14.82	85.12	3,706.7	63.7	747.0	749.7	0.00	0.00	0.00
3,840.0	14.82	85.12	3,745.4	64.6	757.2	759.9	0.00	0.00	0.00
3,880.0	14.82	85.12	3,784.0	65.5	767.4	770.1	0.00	0.00	0.00
3,902.7	14.82	85.12	3,806.0	66.0	773.1	776.0	0.00	0.00	0.00
PARKMAN									
3,920.0	14.82	85.12	3,822.7	66.3	777.5	780.4	0.00	0.00	0.00
3,960.0	14.82	85.12	3,861.4	67.2	787.7	790.6	0.00	0.00	0.00

Database:	Landmark	Local Co-ordinate Reference:	Well Booth 27-26
Company:	BAYSWATER EXPLORATION & PRODUCTION	TVD Reference:	WELL @ 4907.0ft (Original Well Elev)
Project:	SEC.26-T7N-R65W	MD Reference:	WELL @ 4907.0ft (Original Well Elev)
Site:	Booth 4 Pad Sec.26-T7N-R65W	North Reference:	True
Well:	Booth 27-26	Survey Calculation Method:	Minimum Curvature
Wellbore:	Wellbore #1		
Design:	Plan #1 (5-17-12)		

Planned Survey									
Measured Depth (ft)	Inclination (°)	Azimuth (°)	Vertical Depth (ft)	+N/-S (ft)	+E/-W (ft)	Vertical Section (ft)	Dogleg Rate (°/100ft)	Build Rate (°/100ft)	Turn Rate (°/100ft)
4,000.0	14.82	85.12	3,900.0	68.1	797.9	800.8	0.00	0.00	0.00
4,040.0	14.82	85.12	3,938.7	68.9	808.1	811.1	0.00	0.00	0.00
4,080.0	14.82	85.12	3,977.4	69.8	818.3	821.3	0.00	0.00	0.00
4,120.0	14.82	85.12	4,016.0	70.7	828.5	831.5	0.00	0.00	0.00
4,160.0	14.82	85.12	4,054.7	71.6	838.7	841.7	0.00	0.00	0.00
4,200.0	14.82	85.12	4,093.4	72.4	848.9	852.0	0.00	0.00	0.00
4,240.0	14.82	85.12	4,132.1	73.3	859.1	862.2	0.00	0.00	0.00
4,280.0	14.82	85.12	4,170.7	74.2	869.3	872.4	0.00	0.00	0.00
4,320.0	14.82	85.12	4,209.4	75.0	879.5	882.7	0.00	0.00	0.00
4,360.0	14.82	85.12	4,248.1	75.9	889.7	892.9	0.00	0.00	0.00
4,400.0	14.82	85.12	4,286.7	76.8	899.8	903.1	0.00	0.00	0.00
4,440.0	14.82	85.12	4,325.4	77.6	910.0	913.3	0.00	0.00	0.00
4,480.0	14.82	85.12	4,364.1	78.5	920.2	923.6	0.00	0.00	0.00
4,520.0	14.82	85.12	4,402.7	79.4	930.4	933.8	0.00	0.00	0.00
4,560.0	14.82	85.12	4,441.4	80.2	940.6	944.0	0.00	0.00	0.00
4,586.9	14.82	85.12	4,467.4	80.8	947.5	950.9	0.00	0.00	0.00
4,600.0	14.55	85.12	4,480.1	81.1	950.8	954.2	2.00	-2.00	0.00
4,640.0	13.75	85.12	4,518.9	81.9	960.5	964.0	2.00	-2.00	0.00
4,680.0	12.95	85.12	4,557.8	82.7	969.7	973.3	2.00	-2.00	0.00
4,683.3	12.89	85.12	4,561.0	82.8	970.5	974.0	2.00	-2.00	0.00
SUSSEX									
4,720.0	12.15	85.12	4,596.8	83.5	978.4	981.9	2.00	-2.00	0.00
4,760.0	11.35	85.12	4,636.0	84.2	986.5	990.1	2.00	-2.00	0.00
4,800.0	10.55	85.12	4,675.3	84.8	994.1	997.7	2.00	-2.00	0.00
4,840.0	9.75	85.12	4,714.6	85.4	1,001.1	1,004.7	2.00	-2.00	0.00
4,880.0	8.95	85.12	4,754.1	86.0	1,007.6	1,011.2	2.00	-2.00	0.00
4,920.0	8.15	85.12	4,793.7	86.5	1,013.5	1,017.2	2.00	-2.00	0.00
4,960.0	7.35	85.12	4,833.3	86.9	1,018.9	1,022.6	2.00	-2.00	0.00
5,000.0	6.55	85.12	4,873.0	87.3	1,023.7	1,027.4	2.00	-2.00	0.00
5,040.0	5.75	85.12	4,912.8	87.7	1,028.0	1,031.7	2.00	-2.00	0.00
5,080.0	4.95	85.12	4,952.6	88.0	1,031.7	1,035.5	2.00	-2.00	0.00
5,120.0	4.15	85.12	4,992.5	88.3	1,034.9	1,038.6	2.00	-2.00	0.00
5,160.0	3.35	85.12	5,032.4	88.5	1,037.5	1,041.3	2.00	-2.00	0.00
5,200.0	2.55	85.12	5,072.3	88.7	1,039.5	1,043.3	2.00	-2.00	0.00
5,238.7	1.78	85.12	5,111.0	88.8	1,041.0	1,044.8	2.00	-2.00	0.00
SHANNON									
5,240.0	1.75	85.12	5,112.3	88.8	1,041.0	1,044.8	2.00	-2.00	0.00
5,280.0	0.95	85.12	5,152.3	88.9	1,042.0	1,045.8	2.00	-2.00	0.00
5,320.0	0.15	85.12	5,192.3	88.9	1,042.4	1,046.2	2.00	-2.00	0.00
5,327.7	0.00	0.00	5,200.0	88.9	1,042.4	1,046.2	2.00	-2.00	0.00
TARGET BHL 75'FNL & 1233'FEL									
5,360.0	0.00	0.00	5,232.3	88.9	1,042.4	1,046.2	0.00	0.00	0.00
5,400.0	0.00	0.00	5,272.3	88.9	1,042.4	1,046.2	0.00	0.00	0.00
5,440.0	0.00	0.00	5,312.3	88.9	1,042.4	1,046.2	0.00	0.00	0.00
5,480.0	0.00	0.00	5,352.3	88.9	1,042.4	1,046.2	0.00	0.00	0.00
5,520.0	0.00	0.00	5,392.3	88.9	1,042.4	1,046.2	0.00	0.00	0.00
5,560.0	0.00	0.00	5,432.3	88.9	1,042.4	1,046.2	0.00	0.00	0.00
5,600.0	0.00	0.00	5,472.3	88.9	1,042.4	1,046.2	0.00	0.00	0.00
5,640.0	0.00	0.00	5,512.3	88.9	1,042.4	1,046.2	0.00	0.00	0.00
5,680.0	0.00	0.00	5,552.3	88.9	1,042.4	1,046.2	0.00	0.00	0.00
5,720.0	0.00	0.00	5,592.3	88.9	1,042.4	1,046.2	0.00	0.00	0.00
5,760.0	0.00	0.00	5,632.3	88.9	1,042.4	1,046.2	0.00	0.00	0.00
5,800.0	0.00	0.00	5,672.3	88.9	1,042.4	1,046.2	0.00	0.00	0.00

Database:	Landmark	Local Co-ordinate Reference:	Well Booth 27-26
Company:	BAYSWATER EXPLORATION & PRODUCTION	TVD Reference:	WELL @ 4907.0ft (Original Well Elev)
Project:	SEC.26-T7N-R65W	MD Reference:	WELL @ 4907.0ft (Original Well Elev)
Site:	Booth 4 Pad Sec.26-T7N-R65W	North Reference:	True
Well:	Booth 27-26	Survey Calculation Method:	Minimum Curvature
Wellbore:	Wellbore #1		
Design:	Plan #1 (5-17-12)		

Planned Survey									
Measured Depth (ft)	Inclination (°)	Azimuth (°)	Vertical Depth (ft)	+N/-S (ft)	+E/-W (ft)	Vertical Section (ft)	Dogleg Rate (°/100ft)	Build Rate (°/100ft)	Turn Rate (°/100ft)
5,840.0	0.00	0.00	5,712.3	88.9	1,042.4	1,046.2	0.00	0.00	0.00
5,880.0	0.00	0.00	5,752.3	88.9	1,042.4	1,046.2	0.00	0.00	0.00
5,920.0	0.00	0.00	5,792.3	88.9	1,042.4	1,046.2	0.00	0.00	0.00
5,960.0	0.00	0.00	5,832.3	88.9	1,042.4	1,046.2	0.00	0.00	0.00
6,000.0	0.00	0.00	5,872.3	88.9	1,042.4	1,046.2	0.00	0.00	0.00
6,040.0	0.00	0.00	5,912.3	88.9	1,042.4	1,046.2	0.00	0.00	0.00
6,080.0	0.00	0.00	5,952.3	88.9	1,042.4	1,046.2	0.00	0.00	0.00
6,120.0	0.00	0.00	5,992.3	88.9	1,042.4	1,046.2	0.00	0.00	0.00
6,160.0	0.00	0.00	6,032.3	88.9	1,042.4	1,046.2	0.00	0.00	0.00
6,200.0	0.00	0.00	6,072.3	88.9	1,042.4	1,046.2	0.00	0.00	0.00
6,240.0	0.00	0.00	6,112.3	88.9	1,042.4	1,046.2	0.00	0.00	0.00
6,280.0	0.00	0.00	6,152.3	88.9	1,042.4	1,046.2	0.00	0.00	0.00
6,320.0	0.00	0.00	6,192.3	88.9	1,042.4	1,046.2	0.00	0.00	0.00
6,360.0	0.00	0.00	6,232.3	88.9	1,042.4	1,046.2	0.00	0.00	0.00
6,400.0	0.00	0.00	6,272.3	88.9	1,042.4	1,046.2	0.00	0.00	0.00
6,440.0	0.00	0.00	6,312.3	88.9	1,042.4	1,046.2	0.00	0.00	0.00
6,480.0	0.00	0.00	6,352.3	88.9	1,042.4	1,046.2	0.00	0.00	0.00
6,520.0	0.00	0.00	6,392.3	88.9	1,042.4	1,046.2	0.00	0.00	0.00
6,560.0	0.00	0.00	6,432.3	88.9	1,042.4	1,046.2	0.00	0.00	0.00
6,600.0	0.00	0.00	6,472.3	88.9	1,042.4	1,046.2	0.00	0.00	0.00
6,640.0	0.00	0.00	6,512.3	88.9	1,042.4	1,046.2	0.00	0.00	0.00
6,680.0	0.00	0.00	6,552.3	88.9	1,042.4	1,046.2	0.00	0.00	0.00
6,720.0	0.00	0.00	6,592.3	88.9	1,042.4	1,046.2	0.00	0.00	0.00
6,760.0	0.00	0.00	6,632.3	88.9	1,042.4	1,046.2	0.00	0.00	0.00
6,800.0	0.00	0.00	6,672.3	88.9	1,042.4	1,046.2	0.00	0.00	0.00
6,840.0	0.00	0.00	6,712.3	88.9	1,042.4	1,046.2	0.00	0.00	0.00
6,880.0	0.00	0.00	6,752.3	88.9	1,042.4	1,046.2	0.00	0.00	0.00
6,920.0	0.00	0.00	6,792.3	88.9	1,042.4	1,046.2	0.00	0.00	0.00
6,960.0	0.00	0.00	6,832.3	88.9	1,042.4	1,046.2	0.00	0.00	0.00
7,000.0	0.00	0.00	6,872.3	88.9	1,042.4	1,046.2	0.00	0.00	0.00
7,038.7	0.00	0.00	6,911.0	88.9	1,042.4	1,046.2	0.00	0.00	0.00
NIORARA - TARGET CIRCLE 75'FNL & 1233'FEL									
7,040.0	0.00	0.00	6,912.3	88.9	1,042.4	1,046.2	0.00	0.00	0.00
7,080.0	0.00	0.00	6,952.3	88.9	1,042.4	1,046.2	0.00	0.00	0.00
7,120.0	0.00	0.00	6,992.3	88.9	1,042.4	1,046.2	0.00	0.00	0.00
7,160.0	0.00	0.00	7,032.3	88.9	1,042.4	1,046.2	0.00	0.00	0.00
7,200.0	0.00	0.00	7,072.3	88.9	1,042.4	1,046.2	0.00	0.00	0.00
7,240.0	0.00	0.00	7,112.3	88.9	1,042.4	1,046.2	0.00	0.00	0.00
7,280.0	0.00	0.00	7,152.3	88.9	1,042.4	1,046.2	0.00	0.00	0.00
7,290.7	0.00	0.00	7,163.0	88.9	1,042.4	1,046.2	0.00	0.00	0.00
FORT HAYS									
7,320.0	0.00	0.00	7,192.3	88.9	1,042.4	1,046.2	0.00	0.00	0.00
7,334.7	0.00	0.00	7,207.0	88.9	1,042.4	1,046.2	0.00	0.00	0.00
CODELL									
7,360.0	0.00	0.00	7,232.3	88.9	1,042.4	1,046.2	0.00	0.00	0.00
7,386.7	0.00	0.00	7,259.0	88.9	1,042.4	1,046.2	0.00	0.00	0.00
GREENHORN									
7,400.0	0.00	0.00	7,272.3	88.9	1,042.4	1,046.2	0.00	0.00	0.00
7,440.0	0.00	0.00	7,312.3	88.9	1,042.4	1,046.2	0.00	0.00	0.00
7,468.7	0.00	0.00	7,341.0	88.9	1,042.4	1,046.2	0.00	0.00	0.00
GRANEROS									
7,480.0	0.00	0.00	7,352.3	88.9	1,042.4	1,046.2	0.00	0.00	0.00

Database:	Landmark	Local Co-ordinate Reference:	Well Booth 27-26
Company:	BAYSWATER EXPLORATION & PRODUCTION	TVD Reference:	WELL @ 4907.0ft (Original Well Elev)
Project:	SEC.26-T7N-R65W	MD Reference:	WELL @ 4907.0ft (Original Well Elev)
Site:	Booth 4 Pad Sec.26-T7N-R65W	North Reference:	True
Well:	Booth 27-26	Survey Calculation Method:	Minimum Curvature
Wellbore:	Wellbore #1		
Design:	Plan #1 (5-17-12)		

Planned Survey									
Measured Depth (ft)	Inclination (°)	Azimuth (°)	Vertical Depth (ft)	+N/-S (ft)	+E/-W (ft)	Vertical Section (ft)	Dogleg Rate (°/100ft)	Build Rate (°/100ft)	Turn Rate (°/100ft)
7,482.7	0.00	0.00	7,355.0	88.9	1,042.4	1,046.2	0.00	0.00	0.00
HARDLINE 75°N OF BHL									

Casing Points				
Measured Depth (ft)	Vertical Depth (ft)	Name	Casing Diameter (")	Hole Diameter (")
690.1	690.0	8 5/8"	8-5/8	12-1/4

Formations					
Measured Depth (ft)	Vertical Depth (ft)	Name	Lithology	Dip (°)	Dip Direction (°)
3,902.7	3,806.0	PARKMAN		0.00	
4,683.3	4,561.0	SUSSEX		0.00	
5,238.7	5,111.0	SHANNON		0.00	
7,038.7	6,911.0	NIOBRARA		0.00	
7,290.7	7,163.0	FORT HAYS		0.00	
7,334.7	7,207.0	CODELL		0.00	
7,386.7	7,259.0	GREENHORN		0.00	
7,468.7	7,341.0	GRANEROS		0.00	



Directional

BAYSWATER EXPLORATION & PRODUCTION

SEC.26-T7N-R65W

Booth 4 Pad Sec.26-T7N-R65W

Booth 27-26

Wellbore #1

Plan #1 (5-17-12)

Anticollision Report

31 May, 2012

Company:	BAYSWATER EXPLORATION & PRODUCTION	Local Co-ordinate Reference:	Well Booth 27-26
Project:	SEC.26-T7N-R65W	TVD Reference:	WELL @ 4907.0ft (Original Well Elev)
Reference Site:	Booth 4 Pad Sec.26-T7N-R65W	MD Reference:	WELL @ 4907.0ft (Original Well Elev)
Site Error:	0.0ft	North Reference:	True
Reference Well:	Booth 27-26	Survey Calculation Method:	Minimum Curvature
Well Error:	0.0ft	Output errors are at	2.00 sigma
Reference Wellbore	Wellbore #1	Database:	Landmark
Reference Design:	Plan #1 (5-17-12)	Offset TVD Reference:	Offset Datum

Reference	Plan #1 (5-17-12)		
Filter type:	NO GLOBAL FILTER: Using user defined selection & filtering criteria		
Interpolation Method:	Stations	Error Model:	ISCWSA
Depth Range:	Unlimited	Scan Method:	Closest Approach 3D
Results Limited by:	Maximum center-center distance of 10,000.0ft	Error Surface:	Elliptical Conic
Warning Levels Evaluated at:	2.00 Sigma		

Survey Tool Program	Date 5/31/2012			
From (ft)	To (ft)	Survey (Wellbore)	Tool Name	Description
0.0	7,482.7	Plan #1 (5-17-12) (Wellbore #1)	MWD	MWD - Standard

Summary						
Site Name	Reference Measured Depth (ft)	Offset Measured Depth (ft)	Distance Between Centres (ft)	Between Ellipses (ft)	Separation Factor	Warning
Offset Well - Wellbore - Design						
Booth 4 Pad Sec.26-T7N-R65W						
Booth 26-26 - Wellbore #1 - Plan #1 (5-17-12)	400.0	400.0	15.9	14.3	10.089	CC, ES
Booth 26-26 - Wellbore #1 - Plan #1 (5-17-12)	1,300.0	1,292.2	45.0	38.9	7.406	SF
Booth 28-26 - Wellbore #1 - Plan #1 (5-17-12)	500.0	500.0	16.0	14.0	7.908	CC, ES
Booth 28-26 - Wellbore #1 - Plan #1 (5-17-12)	600.0	600.0	16.9	14.5	6.882	SF

Offset Design Booth 4 Pad Sec.26-T7N-R65W - Booth 26-26 - Wellbore #1 - Plan #1 (5-17-12)												
Survey Program: 0-MWD												
Reference	Offset	Semi Major Axis		Distance		Offset Wellbore Centre		Between Centres (ft)	Between Ellipses (ft)	Minimum Separation (ft)	Separation Factor	Warning
Measured Depth (ft)	Vertical Depth (ft)	Measured Depth (ft)	Vertical Depth (ft)	Reference (ft)	Offset (ft)	Highside Toolface (°)	+N/-S (ft)	+E/-W (ft)				
0.0	0.0	0.0	0.0	0.0	0.0	143.47	-12.8	9.4	15.9	15.9	0.00	N/A
100.0	100.0	100.0	100.0	0.1	0.1	143.47	-12.8	9.4	15.9	15.6	0.22	70.623
200.0	200.0	200.0	200.0	0.3	0.3	143.47	-12.8	9.4	15.9	15.2	0.67	23.541
300.0	300.0	300.0	300.0	0.6	0.6	143.47	-12.8	9.4	15.9	14.7	1.12	14.125
400.0	400.0	400.0	400.0	0.8	0.8	143.47	-12.8	9.4	15.9	14.3	1.57	10.089 CC, ES
500.0	500.0	499.6	499.6	1.0	1.0	138.76	-12.8	11.2	17.0	15.0	2.01	8.438
600.0	600.0	599.1	599.0	1.2	1.2	46.23	-12.8	16.4	19.5	17.1	2.43	8.030
700.0	699.8	698.5	698.0	1.4	1.4	41.23	-12.8	25.0	22.5	19.7	2.86	7.873
800.0	799.5	797.7	796.5	1.7	1.7	37.97	-12.7	37.0	25.8	22.5	3.31	7.797
900.0	898.7	896.9	894.4	1.9	2.0	35.96	-12.7	52.4	29.2	25.5	3.78	7.743
1,000.0	997.5	995.9	991.6	2.2	2.4	34.82	-12.7	71.2	32.9	28.6	4.28	7.681
1,100.0	1,095.6	1,094.8	1,088.0	2.6	2.8	34.32	-12.7	93.3	36.6	31.8	4.82	7.595
1,200.0	1,193.1	1,193.5	1,183.4	3.0	3.3	34.27	-12.7	118.7	40.5	35.1	5.41	7.475
1,240.8	1,232.6	1,233.8	1,222.1	3.2	3.5	34.35	-12.7	129.9	42.1	36.4	5.68	7.413
1,300.0	1,289.8	1,292.2	1,277.8	3.5	3.8	34.15	-12.7	147.2	45.0	38.9	6.07	7.406 SF
1,400.0	1,386.5	1,390.4	1,370.8	4.0	4.4	32.42	-12.7	179.0	52.2	45.5	6.72	7.770
1,500.0	1,483.2	1,488.1	1,462.1	4.5	5.1	29.75	-12.7	213.6	62.6	55.2	7.34	8.531
1,600.0	1,579.8	1,585.0	1,551.5	5.0	5.9	26.85	-12.7	251.0	76.1	68.2	7.92	9.609
1,700.0	1,676.5	1,680.8	1,638.6	5.5	6.7	24.15	-12.7	291.0	93.0	84.5	8.50	10.936
1,800.0	1,773.2	1,778.1	1,726.0	6.0	7.5	21.87	-12.7	333.7	112.2	103.1	9.09	12.352
1,900.0	1,869.9	1,876.1	1,814.0	6.6	8.4	20.23	-12.7	376.9	131.7	122.0	9.69	13.593
2,000.0	1,966.5	1,974.1	1,902.0	7.1	9.4	19.01	-12.7	420.0	151.3	141.0	10.31	14.677

CC - Min centre to center distance or convergent point, SF - min separation factor, ES - min ellipse separation

Company:	BAYSWATER EXPLORATION & PRODUCTION	Local Co-ordinate Reference:	Well Booth 27-26
Project:	SEC.26-T7N-R65W	TVD Reference:	WELL @ 4907.0ft (Original Well Elev)
Reference Site:	Booth 4 Pad Sec.26-T7N-R65W	MD Reference:	WELL @ 4907.0ft (Original Well Elev)
Site Error:	0.0ft	North Reference:	True
Reference Well:	Booth 27-26	Survey Calculation Method:	Minimum Curvature
Well Error:	0.0ft	Output errors are at	2.00 sigma
Reference Wellbore	Wellbore #1	Database:	Landmark
Reference Design:	Plan #1 (5-17-12)	Offset TVD Reference:	Offset Datum

Offset Design Booth 4 Pad Sec.26-T7N-R65W - Booth 26-26 - Wellbore #1 - Plan #1 (5-17-12)													Offset Site Error:	0.0 ft
Survey Program: 0-MWD													Offset Well Error:	0.0 ft
Reference	Offset	Semi Major Axis		Distance		Warning								
Measured Depth (ft)	Vertical Depth (ft)	Measured Depth (ft)	Vertical Depth (ft)	Reference (ft)	Offset (ft)	Highside Toolface (°)	Offset Wellbore Centre +N/-S (ft)	+E/-W (ft)	Between Centres (ft)	Between Ellipses (ft)	Minimum Separation (ft)	Separation Factor		
2,100.0	2,063.2	2,072.2	1,990.1	7.6	10.3	18.07	-12.7	463.1	170.9	159.9	10.93	15.629		
2,200.0	2,159.9	2,170.2	2,078.1	8.2	11.2	17.33	-12.6	506.3	190.5	178.9	11.57	16.470		
2,300.0	2,256.6	2,268.2	2,166.1	8.7	12.1	16.72	-12.6	549.4	210.2	198.0	12.21	17.218		
2,400.0	2,353.2	2,366.3	2,254.1	9.2	13.0	16.22	-12.6	592.5	229.8	217.0	12.85	17.885		
2,500.0	2,449.9	2,464.3	2,342.2	9.8	14.0	15.80	-12.6	635.6	249.5	236.0	13.50	18.485		
2,600.0	2,546.6	2,562.3	2,430.2	10.3	14.9	15.44	-12.6	678.8	269.3	255.1	14.15	19.026		
2,700.0	2,643.3	2,660.3	2,518.2	10.9	15.8	15.13	-12.6	721.9	289.0	274.2	14.81	19.516		
2,800.0	2,739.9	2,758.4	2,606.3	11.4	16.8	14.85	-12.6	765.0	308.7	293.2	15.46	19.962		
2,900.0	2,836.6	2,856.4	2,694.3	11.9	17.7	14.61	-12.6	808.1	328.4	312.3	16.12	20.370		
3,000.0	2,933.3	2,954.4	2,782.3	12.5	18.6	14.40	-12.6	851.3	348.2	331.4	16.78	20.744		
3,100.0	3,030.0	3,052.4	2,870.3	13.0	19.6	14.21	-12.6	894.4	367.9	350.4	17.45	21.088		
3,200.0	3,126.6	3,150.5	2,958.4	13.6	20.5	14.04	-12.6	937.5	387.6	369.5	18.11	21.405		
3,300.0	3,223.3	3,248.5	3,046.4	14.1	21.5	13.89	-12.5	980.7	407.4	388.6	18.77	21.699		
3,400.0	3,320.0	3,346.5	3,134.4	14.7	22.4	13.75	-12.5	1,023.8	427.1	407.7	19.44	21.971		
3,500.0	3,416.7	3,444.5	3,222.5	15.2	23.3	13.62	-12.5	1,066.9	446.9	426.8	20.11	22.225		
3,600.0	3,513.3	3,542.6	3,310.5	15.8	24.3	13.51	-12.5	1,110.0	466.6	445.8	20.77	22.462		
3,700.0	3,610.0	3,640.6	3,398.5	16.3	25.2	13.40	-12.5	1,153.2	486.4	464.9	21.44	22.683		
3,800.0	3,706.7	3,738.6	3,486.5	16.9	26.2	13.30	-12.5	1,196.3	506.1	484.0	22.11	22.890		
3,900.0	3,803.4	3,836.6	3,574.6	17.4	27.1	13.21	-12.5	1,239.4	525.9	503.1	22.78	23.084		
4,000.0	3,900.0	3,934.7	3,662.6	18.0	28.1	13.12	-12.5	1,282.6	545.6	522.2	23.45	23.267		
4,100.0	3,996.7	4,032.7	3,750.6	18.5	29.0	13.05	-12.5	1,325.7	565.4	541.3	24.12	23.439		
4,200.0	4,093.4	4,130.7	3,838.7	19.1	29.9	12.97	-12.5	1,368.8	585.2	560.4	24.79	23.602		
4,300.0	4,190.1	4,228.7	3,926.7	19.6	30.9	12.90	-12.4	1,411.9	604.9	579.5	25.46	23.755		
4,400.0	4,286.7	4,326.8	4,014.7	20.2	31.8	12.84	-12.4	1,455.1	624.7	598.5	26.14	23.901		
4,500.0	4,383.4	4,424.8	4,102.7	20.7	32.8	12.78	-12.4	1,498.2	644.4	617.6	26.81	24.038		
4,586.9	4,467.4	4,510.0	4,179.2	21.2	33.6	12.73	-12.4	1,535.7	661.6	634.2	27.39	24.152		
4,600.0	4,480.1	4,522.8	4,190.8	21.2	33.7	12.73	-12.4	1,541.3	664.2	636.8	27.47	24.177		
4,700.0	4,577.3	4,620.4	4,278.4	21.6	34.7	12.74	-12.4	1,584.3	686.1	658.1	28.04	24.473		
4,800.0	4,675.3	4,717.1	4,365.3	22.0	35.6	12.70	-12.4	1,626.8	711.3	682.7	28.54	24.925		
4,900.0	4,773.9	4,813.0	4,451.3	22.3	36.5	12.63	-12.4	1,669.0	739.7	710.8	28.98	25.528		
5,000.0	4,873.0	4,907.8	4,536.4	22.5	37.4	12.53	-12.4	1,710.7	771.4	742.1	29.36	26.279		
5,100.0	4,972.5	5,001.4	4,620.5	22.7	38.3	12.41	-12.4	1,751.9	806.4	776.7	29.67	27.175		
5,200.0	5,072.3	5,093.7	4,703.4	22.9	39.2	12.27	-12.4	1,792.5	844.5	814.6	29.93	28.215		
5,300.0	5,172.3	5,184.7	4,785.1	23.0	40.1	12.12	-12.4	1,832.5	885.8	855.7	30.13	29.401		
5,327.7	5,200.0	5,209.6	4,807.5	23.1	40.3	97.21	-12.4	1,843.5	897.8	867.6	30.17	29.754		
5,400.0	5,272.3	5,274.5	4,865.8	23.1	40.9	96.96	-12.3	1,872.1	929.4	899.0	30.46	30.509		
5,500.0	5,372.3	5,368.2	4,950.0	23.2	41.8	96.63	-12.3	1,913.3	973.2	942.3	30.89	31.507		
5,600.0	5,472.3	5,507.2	5,076.4	23.3	42.9	96.22	-12.3	1,970.8	1,014.4	983.0	31.41	32.295		
5,700.0	5,572.3	5,652.2	5,211.2	23.5	43.8	95.89	-12.3	2,024.3	1,051.1	1,019.2	31.94	32.907		
5,800.0	5,672.3	5,802.7	5,353.8	23.6	44.7	95.61	-12.3	2,072.5	1,083.0	1,050.5	32.48	33.344		
5,900.0	5,772.3	5,958.4	5,503.6	23.7	45.4	95.39	-12.3	2,114.4	1,109.8	1,076.8	33.01	33.622		
6,000.0	5,872.3	6,118.3	5,659.8	23.8	46.0	95.23	-12.3	2,149.0	1,131.3	1,097.8	33.52	33.749		
6,100.0	5,972.3	6,281.8	5,821.2	23.9	46.5	95.11	-12.3	2,175.2	1,147.3	1,113.3	34.01	33.736		
6,200.0	6,072.3	6,447.8	5,986.2	24.0	46.8	95.03	-12.3	2,192.4	1,157.6	1,123.2	34.46	33.593		
6,300.0	6,172.3	6,615.3	6,153.5	24.2	47.0	95.00	-12.3	2,200.0	1,162.2	1,127.3	34.88	33.322		
6,400.0	6,272.3	6,734.1	6,272.3	24.3	47.1	94.99	-12.3	2,200.4	1,162.4	1,127.2	35.21	33.014		
6,500.0	6,372.3	6,834.1	6,372.3	24.4	47.1	94.99	-12.3	2,200.4	1,162.4	1,126.9	35.52	32.723		
6,600.0	6,472.3	6,934.1	6,472.3	24.5	47.2	94.99	-12.3	2,200.4	1,162.4	1,126.6	35.84	32.436		
6,700.0	6,572.3	7,034.1	6,572.3	24.7	47.3	94.99	-12.3	2,200.4	1,162.4	1,126.2	36.16	32.150		
6,800.0	6,672.3	7,134.1	6,672.3	24.8	47.3	94.99	-12.3	2,200.4	1,162.4	1,125.9	36.48	31.868		
6,900.0	6,772.3	7,234.1	6,772.3	24.9	47.4	94.99	-12.3	2,200.4	1,162.4	1,125.6	36.80	31.588		

CC - Min centre to center distance or convergent point, SF - min separation factor, ES - min ellipse separation

Company:	BAYSWATER EXPLORATION & PRODUCTION	Local Co-ordinate Reference:	Well Booth 27-26
Project:	SEC.26-T7N-R65W	TVD Reference:	WELL @ 4907.0ft (Original Well Elev)
Reference Site:	Booth 4 Pad Sec.26-T7N-R65W	MD Reference:	WELL @ 4907.0ft (Original Well Elev)
Site Error:	0.0ft	North Reference:	True
Reference Well:	Booth 27-26	Survey Calculation Method:	Minimum Curvature
Well Error:	0.0ft	Output errors are at	2.00 sigma
Reference Wellbore	Wellbore #1	Database:	Landmark
Reference Design:	Plan #1 (5-17-12)	Offset TVD Reference:	Offset Datum

Offset Design Booth 4 Pad Sec.26-T7N-R65W - Booth 26-26 - Wellbore #1 - Plan #1 (5-17-12)												Offset Site Error:	0.0 ft
Survey Program: 0-MWD												Offset Well Error:	0.0 ft
Reference		Offset		Semi Major Axis		Highside Toolface (°)	Distance		Between Centres (ft)	Between Ellipses (ft)	Minimum Separation (ft)	Separation Factor	Warning
Measured Depth (ft)	Vertical Depth (ft)	Measured Depth (ft)	Vertical Depth (ft)	Reference (ft)	Offset (ft)		Offset Wellbore Centre +N/-S (ft)	Offset Wellbore Centre +E/-W (ft)					
7,000.0	6,872.3	7,334.1	6,872.3	25.0	47.5	94.99	-12.3	2,200.4	1,162.4	1,125.3	37.12	31.311	
7,100.0	6,972.3	7,434.1	6,972.3	25.2	47.5	94.99	-12.3	2,200.4	1,162.4	1,124.9	37.45	31.037	
7,200.0	7,072.3	7,534.1	7,072.3	25.3	47.6	94.99	-12.3	2,200.4	1,162.4	1,124.6	37.78	30.765	
7,300.0	7,172.3	7,634.1	7,172.3	25.4	47.7	94.99	-12.3	2,200.4	1,162.4	1,124.3	38.12	30.497	
7,400.0	7,272.3	7,734.1	7,272.3	25.6	47.7	94.99	-12.3	2,200.4	1,162.4	1,124.0	38.45	30.231	
7,449.0	7,321.3	7,783.1	7,321.3	25.6	47.8	94.99	-12.3	2,200.4	1,162.4	1,123.8	38.62	30.102	
7,482.7	7,355.0	7,801.8	7,340.0	25.7	47.8	94.99	-12.3	2,200.4	1,162.5	1,123.8	38.71	30.033	

Company:	BAYSWATER EXPLORATION & PRODUCTION	Local Co-ordinate Reference:	Well Booth 27-26
Project:	SEC.26-T7N-R65W	TVD Reference:	WELL @ 4907.0ft (Original Well Elev)
Reference Site:	Booth 4 Pad Sec.26-T7N-R65W	MD Reference:	WELL @ 4907.0ft (Original Well Elev)
Site Error:	0.0ft	North Reference:	True
Reference Well:	Booth 27-26	Survey Calculation Method:	Minimum Curvature
Well Error:	0.0ft	Output errors are at	2.00 sigma
Reference Wellbore	Wellbore #1	Database:	Landmark
Reference Design:	Plan #1 (5-17-12)	Offset TVD Reference:	Offset Datum

Offset Design Booth 4 Pad Sec.26-T7N-R65W - Booth 28-26 - Wellbore #1 - Plan #1 (5-17-12)													Offset Site Error:	0.0 ft
Survey Program: 0-MWD													Offset Well Error:	0.0 ft
Measured Depth (ft)	Vertical Depth (ft)	Measured Depth (ft)	Vertical Depth (ft)	Reference	Offset	Highside Toolface (°)	Offset Wellbore Centre +N/-S (ft)	+E/-W (ft)	Between Centres (ft)	Between Ellipses (ft)	Minimum Separation (ft)	Separation Factor	Warning	
0.0	0.0	0.0	0.0	0.0	0.0	-34.98	13.1	-9.2	16.0	16.0	0.00	N/A		
100.0	100.0	100.0	100.0	0.1	0.1	-34.98	13.1	-9.2	16.0	15.8	0.22	71.172		
200.0	200.0	200.0	200.0	0.3	0.3	-34.98	13.1	-9.2	16.0	15.3	0.67	23.724		
300.0	300.0	300.0	300.0	0.6	0.6	-34.98	13.1	-9.2	16.0	14.9	1.12	14.234		
400.0	400.0	400.0	400.0	0.8	0.8	-34.98	13.1	-9.2	16.0	14.4	1.57	10.167		
500.0	500.0	500.0	500.0	1.0	1.0	-34.98	13.1	-9.2	16.0	14.0	2.02	7.908 CC, ES		
600.0	600.0	600.0	600.0	1.2	1.2	-125.20	13.1	-9.2	16.9	14.5	2.46	6.882 SF		
700.0	699.8	699.8	699.8	1.4	1.5	-137.24	13.1	-9.2	20.4	17.5	2.90	7.046		
800.0	799.5	799.5	799.5	1.7	1.7	-149.60	13.1	-9.2	27.5	24.1	3.34	8.228		
900.0	898.7	898.7	898.7	1.9	1.9	-158.73	13.1	-9.2	38.5	34.7	3.78	10.183		
1,000.0	997.5	997.5	997.5	2.2	2.1	-164.75	13.1	-9.2	53.4	49.2	4.22	12.648		
1,100.0	1,095.6	1,095.6	1,095.6	2.6	2.4	-168.67	13.1	-9.2	72.0	67.3	4.66	15.443		
1,200.0	1,193.1	1,193.1	1,193.1	3.0	2.6	-171.29	13.1	-9.2	94.1	89.0	5.10	18.455		
1,240.8	1,232.6	1,232.6	1,232.6	3.2	2.7	-172.11	13.1	-9.2	104.2	98.9	5.28	19.730		
1,300.0	1,289.8	1,289.8	1,289.8	3.5	2.8	-173.11	13.1	-9.2	119.2	113.7	5.55	21.464		
1,400.0	1,386.5	1,386.5	1,386.5	4.0	3.0	-174.32	13.1	-9.2	144.6	138.6	6.02	24.023		
1,500.0	1,483.2	1,483.2	1,483.2	4.5	3.2	-175.17	13.1	-9.2	170.1	163.6	6.49	26.199		
1,600.0	1,579.8	1,575.3	1,575.3	5.0	3.4	-175.63	13.6	-10.0	196.5	189.6	6.96	28.248		
1,700.0	1,676.5	1,665.2	1,665.1	5.5	3.6	-175.62	15.3	-13.4	225.6	218.2	7.42	30.395		
1,800.0	1,773.2	1,753.5	1,753.1	6.0	3.8	-175.30	18.3	-19.1	257.2	249.4	7.89	32.620		
1,900.0	1,869.9	1,840.1	1,839.3	6.6	4.0	-174.79	22.5	-27.0	291.5	283.1	8.35	34.899		
2,000.0	1,966.5	1,924.9	1,923.3	7.1	4.2	-174.17	27.8	-37.0	328.2	319.4	8.82	37.215		
2,100.0	2,063.2	2,010.4	2,007.7	7.6	4.4	-173.47	34.3	-49.2	367.3	358.0	9.30	39.508		
2,200.0	2,159.9	2,102.0	2,098.1	8.2	4.7	-172.82	41.5	-62.8	407.0	397.3	9.78	41.627		
2,300.0	2,256.6	2,193.7	2,188.4	8.7	5.0	-172.28	48.7	-76.5	446.8	436.6	10.27	43.527		
2,400.0	2,353.2	2,285.4	2,278.8	9.2	5.3	-171.83	56.0	-90.2	486.7	475.9	10.76	45.235		
2,500.0	2,449.9	2,377.0	2,369.1	9.8	5.6	-171.45	63.2	-103.8	526.5	515.3	11.26	46.780		
2,600.0	2,546.6	2,468.7	2,459.4	10.3	5.9	-171.12	70.4	-117.5	566.4	554.7	11.76	48.184		
2,700.0	2,643.3	2,560.4	2,549.8	10.9	6.2	-170.84	77.6	-131.2	606.3	594.0	12.26	49.461		
2,800.0	2,739.9	2,652.0	2,640.1	11.4	6.5	-170.59	84.9	-144.8	646.2	633.4	12.76	50.628		
2,900.0	2,836.6	2,743.7	2,730.5	11.9	6.8	-170.37	92.1	-158.5	686.1	672.8	13.27	51.698		
3,000.0	2,933.3	2,835.3	2,820.8	12.5	7.1	-170.17	99.3	-172.2	726.0	712.2	13.78	52.681		
3,100.0	3,030.0	2,927.0	2,911.2	13.0	7.4	-170.00	106.6	-185.8	765.9	751.6	14.29	53.587		
3,200.0	3,126.6	3,018.7	3,001.5	13.6	7.8	-169.84	113.8	-199.5	805.8	791.0	14.81	54.425		
3,300.0	3,223.3	3,110.3	3,091.9	14.1	8.1	-169.70	121.0	-213.1	845.8	830.5	15.32	55.201		
3,400.0	3,320.0	3,202.0	3,182.2	14.7	8.4	-169.57	128.3	-226.8	885.7	869.9	15.84	55.922		
3,500.0	3,416.7	3,293.7	3,272.6	15.2	8.8	-169.45	135.5	-240.5	925.6	909.3	16.36	56.592		
3,600.0	3,513.3	3,385.3	3,362.9	15.8	9.1	-169.34	142.7	-254.1	965.6	948.7	16.88	57.218		
3,700.0	3,610.0	3,477.0	3,453.3	16.3	9.4	-169.24	149.9	-267.8	1,005.5	988.1	17.40	57.803		
3,800.0	3,706.7	3,568.6	3,543.6	16.9	9.8	-169.14	157.2	-281.5	1,045.5	1,027.6	17.92	58.351		
3,900.0	3,803.4	3,660.3	3,634.0	17.4	10.1	-169.06	164.4	-295.1	1,085.4	1,067.0	18.44	58.864		
4,000.0	3,900.0	3,752.0	3,724.3	18.0	10.4	-168.98	171.6	-308.8	1,125.4	1,106.4	18.96	59.348		
4,100.0	3,996.7	3,843.6	3,814.7	18.5	10.8	-168.90	178.9	-322.5	1,165.3	1,145.8	19.49	59.802		
4,200.0	4,093.4	3,935.3	3,905.0	19.1	11.1	-168.83	186.1	-336.1	1,205.3	1,185.3	20.01	60.231		
4,300.0	4,190.1	4,027.0	3,995.4	19.6	11.5	-168.77	193.3	-349.8	1,245.2	1,224.7	20.54	60.636		
4,400.0	4,286.7	4,168.4	4,135.2	20.2	11.9	-168.72	203.3	-368.7	1,283.8	1,262.7	21.14	60.739		
4,500.0	4,383.4	4,330.8	4,296.8	20.7	12.3	-168.82	210.9	-382.9	1,317.8	1,296.0	21.74	60.628		
4,586.9	4,467.4	4,476.6	4,442.4	21.2	12.5	-169.03	214.0	-388.8	1,343.1	1,320.9	22.24	60.390		
4,600.0	4,480.1	4,498.9	4,464.7	21.2	12.6	-169.08	214.1	-389.1	1,346.6	1,324.3	22.33	60.309		
4,700.0	4,577.3	4,611.5	4,577.3	21.6	12.7	-169.38	214.2	-389.3	1,369.7	1,346.9	22.87	59.898		
4,800.0	4,675.3	4,709.5	4,675.3	22.0	12.9	-169.61	214.2	-389.3	1,389.5	1,366.1	23.37	59.455		

CC - Min centre to center distance or convergent point, SF - min separation factor, ES - min ellipse separation

Company:	BAYSWATER EXPLORATION & PRODUCTION	Local Co-ordinate Reference:	Well Booth 27-26
Project:	SEC.26-T7N-R65W	TVD Reference:	WELL @ 4907.0ft (Original Well Elev)
Reference Site:	Booth 4 Pad Sec.26-T7N-R65W	MD Reference:	WELL @ 4907.0ft (Original Well Elev)
Site Error:	0.0ft	North Reference:	True
Reference Well:	Booth 27-26	Survey Calculation Method:	Minimum Curvature
Well Error:	0.0ft	Output errors are at	2.00 sigma
Reference Wellbore	Wellbore #1	Database:	Landmark
Reference Design:	Plan #1 (5-17-12)	Offset TVD Reference:	Offset Datum

Offset Design Booth 4 Pad Sec.26-T7N-R65W - Booth 28-26 - Wellbore #1 - Plan #1 (5-17-12)												Offset Site Error: 0.0 ft	
Survey Program: 0-MWD												Offset Well Error: 0.0 ft	
Reference		Offset		Semi Major Axis			Distance					Warning	
Measured Depth	Vertical Depth	Measured Depth	Vertical Depth	Reference	Offset	Highside Toolface	Offset Wellbore Centre	Between Centres	Between Ellipses	Minimum Separation	Separation Factor		
(ft)	(ft)	(ft)	(ft)	(ft)	(ft)	(°)	+N/-S (ft)	+E/-W (ft)	(ft)	(ft)	(ft)		
4,900.0	4,773.9	4,808.1	4,773.9	22.3	13.1	-169.79	214.2	-389.3	1,405.8	1,381.9	23.84	58.972	
5,000.0	4,873.0	4,907.2	4,873.0	22.5	13.3	-169.93	214.2	-389.3	1,418.7	1,394.5	24.27	58.451	
5,100.0	4,972.5	5,006.7	4,972.5	22.7	13.4	-170.03	214.2	-389.3	1,428.3	1,403.6	24.67	57.893	
5,200.0	5,072.3	5,106.5	5,072.3	22.9	13.6	-170.09	214.2	-389.3	1,434.4	1,409.3	25.03	57.299	
5,300.0	5,172.3	5,206.5	5,172.3	23.0	13.8	-170.12	214.2	-389.3	1,437.0	1,411.7	25.36	56.670	
5,327.7	5,200.0	5,234.2	5,200.0	23.1	13.8	-85.00	214.2	-389.3	1,437.2	1,411.7	25.44	56.485	
5,400.0	5,272.3	5,306.5	5,272.3	23.1	14.0	-85.00	214.2	-389.3	1,437.2	1,411.5	25.71	55.899	
5,500.0	5,372.3	5,406.5	5,372.3	23.2	14.2	-85.00	214.2	-389.3	1,437.2	1,411.1	26.08	55.097	
5,600.0	5,472.3	5,506.5	5,472.3	23.3	14.3	-85.00	214.2	-389.3	1,437.2	1,410.7	26.46	54.313	
5,700.0	5,572.3	5,606.5	5,572.3	23.5	14.5	-85.00	214.2	-389.3	1,437.2	1,410.3	26.84	53.547	
5,800.0	5,672.3	5,706.5	5,672.3	23.6	14.7	-85.00	214.2	-389.3	1,437.2	1,410.0	27.22	52.798	
5,900.0	5,772.3	5,806.5	5,772.3	23.7	14.9	-85.00	214.2	-389.3	1,437.2	1,409.6	27.60	52.066	
6,000.0	5,872.3	5,906.5	5,872.3	23.8	15.1	-85.00	214.2	-389.3	1,437.2	1,409.2	27.99	51.350	
6,100.0	5,972.3	6,006.5	5,972.3	23.9	15.3	-85.00	214.2	-389.3	1,437.2	1,408.8	28.37	50.651	
6,200.0	6,072.3	6,106.5	6,072.3	24.0	15.5	-85.00	214.2	-389.3	1,437.2	1,408.4	28.76	49.967	
6,300.0	6,172.3	6,206.5	6,172.3	24.2	15.7	-85.00	214.2	-389.3	1,437.2	1,408.0	29.15	49.299	
6,400.0	6,272.3	6,306.5	6,272.3	24.3	15.9	-85.00	214.2	-389.3	1,437.2	1,407.6	29.54	48.646	
6,500.0	6,372.3	6,406.5	6,372.3	24.4	16.0	-85.00	214.2	-389.3	1,437.2	1,407.2	29.94	48.007	
6,600.0	6,472.3	6,506.5	6,472.3	24.5	16.2	-85.00	214.2	-389.3	1,437.2	1,406.8	30.33	47.382	
6,700.0	6,572.3	6,606.5	6,572.3	24.7	16.4	-85.00	214.2	-389.3	1,437.2	1,406.4	30.73	46.772	
6,800.0	6,672.3	6,706.5	6,672.3	24.8	16.6	-85.00	214.2	-389.3	1,437.2	1,406.0	31.12	46.175	
6,900.0	6,772.3	6,806.5	6,772.3	24.9	16.8	-85.00	214.2	-389.3	1,437.2	1,405.7	31.52	45.590	
7,000.0	6,872.3	6,906.5	6,872.3	25.0	17.0	-85.00	214.2	-389.3	1,437.2	1,405.3	31.92	45.019	
7,100.0	6,972.3	7,006.5	6,972.3	25.2	17.2	-85.00	214.2	-389.3	1,437.2	1,404.8	32.33	44.460	
7,200.0	7,072.3	7,106.5	7,072.3	25.3	17.4	-85.00	214.2	-389.3	1,437.2	1,404.4	32.73	43.913	
7,300.0	7,172.3	7,206.5	7,172.3	25.4	17.6	-85.00	214.2	-389.3	1,437.2	1,404.0	33.13	43.378	
7,400.0	7,272.3	7,306.5	7,272.3	25.6	17.8	-85.00	214.2	-389.3	1,437.2	1,403.6	33.54	42.854	
7,482.7	7,355.0	7,389.2	7,355.0	25.7	18.0	-85.00	214.2	-389.3	1,437.2	1,403.3	33.87	42.430	

Company:	BAYSWATER EXPLORATION & PRODUCTION	Local Co-ordinate Reference:	Well Booth 27-26
Project:	SEC.26-T7N-R65W	TVD Reference:	WELL @ 4907.0ft (Original Well Elev)
Reference Site:	Booth 4 Pad Sec.26-T7N-R65W	MD Reference:	WELL @ 4907.0ft (Original Well Elev)
Site Error:	0.0ft	North Reference:	True
Reference Well:	Booth 27-26	Survey Calculation Method:	Minimum Curvature
Well Error:	0.0ft	Output errors are at	2.00 sigma
Reference Wellbore	Wellbore #1	Database:	Landmark
Reference Design:	Plan #1 (5-17-12)	Offset TVD Reference:	Offset Datum

Reference Depths are relative to WELL @ 4907.0ft (Original Well Elev) Coordinates are relative to: Booth 27-26
Offset Depths are relative to Offset Datum
Central Meridian is -105.500000 °
Coordinate System is US State Plane 1983, Colorado Northern Zone
Grid Convergence at Surface is: 0.56°



Company:	BAYSWATER EXPLORATION & PRODUCTION	Local Co-ordinate Reference:	Well Booth 27-26
Project:	SEC.26-T7N-R65W	TVD Reference:	WELL @ 4907.0ft (Original Well Elev)
Reference Site:	Booth 4 Pad Sec.26-T7N-R65W	MD Reference:	WELL @ 4907.0ft (Original Well Elev)
Site Error:	0.0ft	North Reference:	True
Reference Well:	Booth 27-26	Survey Calculation Method:	Minimum Curvature
Well Error:	0.0ft	Output errors are at	2.00 sigma
Reference Wellbore	Wellbore #1	Database:	Landmark
Reference Design:	Plan #1 (5-17-12)	Offset TVD Reference:	Offset Datum

Reference Depths are relative to WELL @ 4907.0ft (Original Well Elev) Coordinates are relative to: Booth 27-26
Offset Depths are relative to Offset Datum
Coordinate System is US State Plane 1983, Colorado Northern Zone
Central Meridian is -105.500000 °
Grid Convergence at Surface is: 0.56°

