

BILL BARRETT CORPORATION E-BILL
DO NOT MAIL-1099 18TH ST,STE 2300W
DENVER, Colorado

Siebring
Siebring 5-63-32-48H

H&P/278

Post Job Summary

Plug Service - Whipstock

Date Prepared: 6/25/12
Version: 1

Service Supervisor: WHEELER, JUSTIN

Submitted by: FRY, DOMINIK

HALLIBURTON

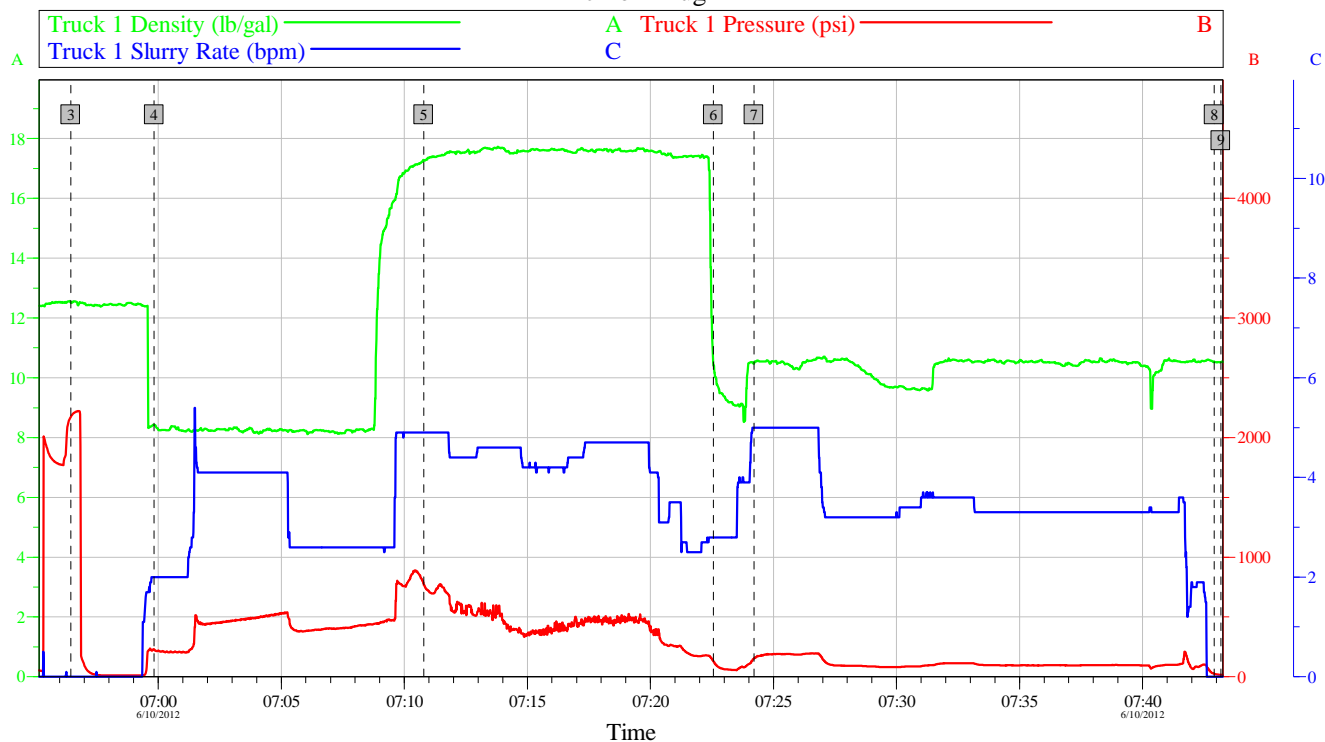
HALLIBURTON

Pumping Schedule

| Stage / Plug # | Fluid # | Fluid Type | Fluid Name | Surface Density lbm/gal | Avg Rate bbl/min | Surface Volume | Downhole Volume |
|----------------|---------|---------------|---------------|-------------------------|------------------|----------------|-----------------|
| 1 | 1 | Spacer | Water Spacer | 8.34 | 4.00 | 28.0 bbl | 28.0 bbl |
| 1 | 2 | Cement Slurry | PlugCem 17.5# | 17.50 | 4.00 | 320.0 sacks | 320.0 sacks |
| 1 | 3 | Spacer | Water Spacer | 8.33 | 4.00 | 5.0 bbl | 5.0 bbl |

Data Acquisition

Bill Barrett - Siebring - 5-63-32-48H
Kick-off Plug



| Global Event Log | | | | | | | | | | | | | | |
|------------------|------------------|----------|-------|--------------|---|-------------------------|----------|--------------|-------|-----|-------------------------|----------|-------|-------|
| Intersection | | TIP | TISR | Intersection | | TIP | TISR | Intersection | | TIP | TISR | | | |
| 3 | Test Lines | 06:56:27 | 2175 | 0.000 | 4 | Pump Fresh Water Spacer | 06:59:50 | 226.8 | 2.000 | 5 | Pump 17.5 lb/gal Cement | 07:10:48 | 772.3 | 4.900 |
| 6 | Pump Fresh Water | 07:22:33 | 129.1 | 2.800 | 7 | Pump Displacement | 07:24:12 | 150.0 | 5.000 | 8 | Shut-Down | 07:42:55 | 25.78 | 0.000 |
| 9 | End Job | 07:43:11 | 16.00 | 0.000 | | | | | | | | | | |

Customer: Bill Barrett
Well Description: Siebring 5-63-32-48H

Job Date: 10-Jun-2012
UWI:

Sales Order #: 9582179

OptiCem v6.4.9
10-Jun-12 09:02

Service Supervisor Reports

Job Log

| Date/Time | Chart # | Activity Code | Pump Rate | Cum Vol | Pump | | Pressure (psig) | | Comments |
|------------------|---------|--|-----------|---------|------|--|-----------------|--|--|
| 06/10/2012 03:00 | | Depart from Service Center or Other Site | | | | | | | |
| 06/10/2012 04:30 | | Arrive At Loc | | | | | | | |
| 06/10/2012 04:45 | | Safety Meeting - Pre Rig-Up | | | | | | | Water Provided By Rig, Tested Ok for Mixing Cement |
| 06/10/2012 06:40 | | Safety Meeting - Pre Job | | | | | | | |
| 06/10/2012 06:56 | | Test Lines | | | | | | | Pressure Test Lines to 2000 PSI |
| 06/10/2012 06:59 | | Pump Spacer | 2 | 28.5 | | | 225.0 | | Pump Fresh Water Spacer (28.5 bbls as Directed By Customer-Provided Job Procedure) |
| 06/10/2012 07:10 | | Pump Cement | 5 | 53.6 | | | 770.0 | | Mix and Pump 320 sks PlugCem Cement @ 17.5 lb/gal (Density Verified By Pressurized Scales) |
| 06/10/2012 07:22 | | Pump Spacer | 3 | 5 | | | 130.0 | | Pump Fresh Water Spacer (5 bbls as Directed By Customer-Provided Job Procedure) |
| 06/10/2012 07:24 | | Pump Displacement - Start | 5 | 0 | | | 150.0 | | Pump 10.5 lb/gal Mud Displacement |
| 06/10/2012 07:41 | | Pump Displacement - End | 3 | 75 | | | 100.0 | | |
| 06/10/2012 07:42 | | Shutdown | | | | | .0 | | Shut-Down, Pressure falls to Zero, No Flowback, or Suction on Pump Truck, Indicating a Balanced Plug |
| 06/10/2012 07:43 | | End Job | | | | | | | Good Returns Throughout Job |
| 06/10/2012 07:45 | | Other | | | | | | | Advised Customer Rep. of Best-Practice, of Waiting 24 HRS before Disturbing Cement Plug |
| 06/10/2012 07:50 | | Other | | | | | | | Rig Pulls Out of Hole @ approx. 6-7 Minutes Per Stand for 8 Stands |
| 06/10/2012 08:30 | | Safety Meeting - Pre Rig-Down | | | | | | | Wet and Dry Samples of Cement Left on Location |
| 06/10/2012 09:00 | | Safety Meeting - Departing Location | | | | | | | |

The Road to Excellence Starts with Safety

| | | | |
|--|---------------------------|--|-----------------------------------|
| Sold To #: 343492 | Ship To #: 2929290 | Quote #: | Sales Order #: 9582179 |
| Customer: BILL BARRETT CORPORATION E-BILL | | Customer Rep: Bowman, Tawn | |
| Well Name: Siebring | | Well #: 5-63-32-48H | API/UWI #: 05-123-35263-00 |
| Field: WATTENBERG | City (SAP): KERSEY | County/Parish: Weld | State: Colorado |
| Contractor: H&P | | Rig/Platform Name/Num: 278 | |
| Job Purpose: Plug Service - Whipstock | | | |
| Well Type: Development Well | | Job Type: Plug Service - Whipstock | |
| Sales Person: FLING, MATTHEW | | Srvc Supervisor: WHEELER, JUSTIN | MBU ID Emp #: 196470 |

Job Personnel

| HES Emp Name | Exp Hrs | Emp # | HES Emp Name | Exp Hrs | Emp # | HES Emp Name | Exp Hrs | Emp # |
|-------------------------|---------|--------|---------------------|---------|--------|---------------------------------|---------|--------|
| BELL, ROBERT Preston | 0.0 | 437060 | IPSON, TIMOTHY John | 0.0 | 485018 | SANSONI, NICHOLAS Sterling J | 0.0 | 502962 |
| WHEELER, JUSTIN W | 0.0 | 196470 | | | | | | |

Equipment

| HES Unit # | Distance-1 way | HES Unit # | Distance-1 way | HES Unit # | Distance-1 way | HES Unit # | Distance-1 way |
|------------|----------------|------------|----------------|------------|----------------|------------|----------------|
| 10866497C | 45 mile | 11542778 | 45 mile | 11562570C | 45 mile | 11605599 | 45 mile |

Job Hours

| Date | On Location Hours | Operating Hours | Date | On Location Hours | Operating Hours | Date | On Location Hours | Operating Hours |
|-------|----------------------|--------------------|--|----------------------|--------------------|------|----------------------|--------------------|
| | | | | | | | | |
| TOTAL | | | Total is the sum of each column separately | | | | | |

Job

Job Times

| Formation Name | | | | | | Date | Time | Time Zone |
|------------------------|----------|--|-------------------|----------|---------------|-----------------|-------|-----------|
| Formation Depth (MD) | Top | | Bottom | | Called Out | 10 - Jun - 2012 | 00:00 | MST |
| Form Type | | | BHST | | On Location | 10 - Jun - 2012 | 04:30 | MST |
| Job depth MD | 6412. ft | | Job Depth TVD | 6412. ft | Job Started | 10 - Jun - 2012 | 06:55 | MST |
| Water Depth | | | Wk Ht Above Floor | | Job Completed | 10 - Jun - 2012 | 07:43 | MST |
| Perforation Depth (MD) | From | | To | | Departed Loc | 10 - Jun - 2012 | 09:00 | MST |

Well Data

| Description | New / Used | Max pressure psig | Size in | ID in | Weight lbm/ft | Thread | Grade | Top MD ft | Bottom MD ft | Top TVD ft | Bottom TVD ft |
|--------------------------|---------------|-------------------------|------------|----------|------------------|--------|-------|--------------|--------------------|------------------|---------------------|
| Open Hole Section | | | | 8.75 | | | | 1500. | 6418. | 1500. | 6418. |
| 9 5/8" Surface Casing | Unknown | | 9.625 | 8.921 | 36. | | | . | 1494. | | |
| Drill Pipe | Unknown | | 4.5 | . | 16.6 | | | . | 5626. | . | 5626. |
| 2 7/8" Tubing | Used | | 2.875 | 2.441 | 6.5 | | | 5626. | 6412. | | |

Tools and Accessories

| Type | Size | Qty | Make | Depth | Type | Size | Qty | Make | Depth | Type | Size | Qty | Make |
|--------------|------|-----|------|-------|-------------|------|-----|------|-------|----------------|------|-----|------|
| Guide Shoe | | | | | Packer | | | | | Top Plug | | | |
| Float Shoe | | | | | Bridge Plug | | | | | Bottom Plug | | | |
| Float Collar | | | | | Retainer | | | | | SSR plug set | | | |
| Insert Float | | | | | | | | | | Plug Container | | | |
| Stage Tool | | | | | | | | | | Centralizers | | | |

Miscellaneous Materials

| | | | | | | | | | | | | | |
|--|---------------|------------------------------|-------|-----------------|-----------------------------------|-----------------|------------------------|--------------|------------------|--------------|------------------------|------|---|
| Gelling Agt | | Conc | | Surfactant | | Conc | | Acid Type | | Qty | | Conc | % |
| Treatment Fld | | Conc | | Inhibitor | | Conc | | Sand Type | | Size | | Qty | |
| Fluid Data | | | | | | | | | | | | | |
| Stage/Plug #: 1 | | | | | | | | | | | | | |
| Fluid # | Stage Type | Fluid Name | | | Qty | Qty uom | Mixing Density lbm/gal | Yield ft3/sk | Mix Fluid Gal/sk | Rate bbl/min | Total Mix Fluid Gal/sk | | |
| 1 | Water Spacer | | | | 28.00 | bbl | 8.34 | .0 | .0 | .0 | | | |
| 2 | PlugCem 17.5# | PLUGCEM (TM) SYSTEM (452969) | | | 320.0 | sacks | 17.5 | .94 | 3.33 | | 3.33 | | |
| | | 3.33 Gal | | | FRESH WATER | | | | | | | | |
| 3 | Water Spacer | | | | | bbl | 8.33 | .0 | .0 | .0 | | | |
| Calculated Values | | Pressures | | | Volumes | | | | | | | | |
| Displacement | | Shut In: Instant | | | Lost Returns | | Cement Slurry | | Pad | | | | |
| Top Of Cement | | 5 Min | | | Cement Returns | | Actual Displacement | | Treatment | | | | |
| Frac Gradient | | 15 Min | | | Spacers | | Load and Breakdown | | Total Job | | | | |
| Rates | | | | | | | | | | | | | |
| Circulating | | Mixing | | Displacement | | Avg. Job | | | | | | | |
| Cement Left In Pipe | | Amount | 46 ft | Reason | Shoe Joint | | | | | | | | |
| Frac Ring # 1 @ | ID | Frac ring # 2 @ | ID | Frac Ring # 3 @ | ID | Frac Ring # 4 @ | ID | | | | | | |
| The Information Stated Herein Is Correct | | | | | Customer Representative Signature | | | | | | | | |

