

*The Road to Excellence Starts with Safety*

Sold To #: 300721	Ship To #: 2918360	Quote #:	Sales Order #: 9404851
Customer: WPX ENERGY ROCKY MOUNTAIN LLC-EBUS	Customer Rep: Hartl, Al		
Well Name: RWF	Well #: 311-36	API/UWI #: 05-045-20755	
Field: Rulison	City (SAP): RIFLE	County/Parish: Garfield	State: Colorado
Lat: N 39.485 deg. OR N 39 deg. 29 min. 6.745 secs.	Long: W 107.84 deg. OR W -108 deg. 9 min. 36.572 secs.		
Contractor: NABORS 576	Rig/Platform Name/Num: NABORS 576		
Job Purpose: Cement Surface Casing			
Well Type: Development Well	Job Type: Cement Surface Casing		
Sales Person: MAYO, MARK	Srv Supervisor: HUGENTOBLE, LOGAN	MBU ID Emp #: 447333	

### Job Personnel

HES Emp Name	Exp Hrs	Emp #	HES Emp Name	Exp Hrs	Emp #	HES Emp Name	Exp Hrs	Emp #
BROWN, TRAVIS A	9	396848	HUGENTOBLE, LOGAN Mark	9	447333	SILVERTHORN, AARON Jacob	9	491305

### Equipment

HES Unit #	Distance-1 way	HES Unit #	Distance-1 way	HES Unit #	Distance-1 way	HES Unit #	Distance-1 way
10744648C	60 mile	10784080	60 mile	10804579	60 mile	10951246	60 mile
11808845	60 mile						

### Job Hours

Date	On Location Hours	Operating Hours	Date	On Location Hours	Operating Hours	Date	On Location Hours	Operating Hours
4/2/12	1	0	4/3/12	8	2			

**TOTAL** Total is the sum of each column separately

### Job

Formation Name	Formation Depth (MD)	Top	Bottom	Called Out	Date	Time	Time Zone
Form Type			BHST	On Location	02 - Apr - 2012	20:00	MST
Job depth MD	1175. ft		Job Depth TVD	Job Started	02 - Apr - 2012	23:00	MST
Water Depth			Wk Ht Above Floor	Job Completed	03 - Apr - 2012	05:30	MST
Perforation Depth (MD)	From		To	Job Completed	03 - Apr - 2012	06:29	MST
				Departed Loc	03 - Apr - 2012	08:00	MST

### Well Data

Description	New / Used	Max pressure psig	Size in	ID in	Weight lbm/ft	Thread	Grade	Top MD ft	Bottom MD ft	Top TVD ft	Bottom TVD ft
-------------	------------	-------------------	---------	-------	---------------	--------	-------	-----------	--------------	------------	---------------

### Tools and Accessories

Type	Size	Qty	Make	Depth	Type	Size	Qty	Make	Depth	Type	Size	Qty	Make
Guide Shoe					Packer					Top Plug	9.625	1	HES
Float Shoe					Bridge Plug					Bottom Plug			
Float Collar					Retainer					SSR plug set			
Insert Float										Plug Container	9.625	1	HES
Stage Tool										Centralizers			

### Miscellaneous Materials

Gelling Agt	Conc	Surfactant	Conc	Acid Type	Qty	Conc	%
Treatment Fld	Conc	Inhibitor	Conc	Sand Type	Size	Qty	

### Fluid Data

Stage/Plug #: 1	Fluid #	Stage Type	Fluid Name	Qty	Qty uom	Mixing Density lbm/gal	Yield ft3/sk	Mix Fluid Gal/sk	Rate bbl/min	Total Mix Fluid Gal/sk
-----------------	---------	------------	------------	-----	---------	------------------------	--------------	------------------	--------------	------------------------

Stage/Plug #: 1	Fluid #	Stage Type	Fluid Name	Qty	Qty uom	Mixing Density uom	Yield uom	Mix Fluid uom	Rate uom	Total Mix Fluid uom
-----------------	---------	------------	------------	-----	---------	--------------------	-----------	---------------	----------	---------------------

Stage/Plug #: 1									
Fluid #	Stage Type	Fluid Name	Qty	Qty uom	Mixing Density lbm/gal	Yield ft <sup>3</sup> /sk	Mix Fluid Gal/sk	Rate bbl/min	Total Mix Fluid Gal/sk
1	Fresh Water		20.00	bbl	8.33	.0	.0	6	
2	Lead Cement	VERSACEM (TM) SYSTEM (452010)	160.0	sacks	12.3	2.38	13.75	6	13.75
		13.75 Gal FRESH WATER							
3	Tail Cement	VERSACEM (TM) SYSTEM (452010)	160.0	sacks	12.8	2.11	11.75	6	11.75
		11.75 Gal FRESH WATER							
4	Displacement Fluid		87.00	bbl	8.34	.0	.0	10	
Calculated Values		Pressures		Volumes					
Displacement	87	Shut In: Instant		Lost Returns	0	Cement Slurry	128	Pad	
Top Of Cement	SURFACE	5 Min		Cement Returns	20	Actual Displacement	87	Treatment	
Frac Gradient		15 Min		Spacers	20	Load and Breakdown		Total Job	
Rates									
Circulating		Mixing	6	Displacement	10	Avg. Job	8		
Cement Left In Pipe	Amount	0 ft	Reason	Shoe Joint					
Frac Ring # 1 @	ID	Frac ring # 2 @	ID	Frac Ring # 3 @	ID	Frac Ring # 4 @	ID		
The Information Stated Herein Is Correct				Customer Representative Signature					

*The Road to Excellence Starts with Safety*

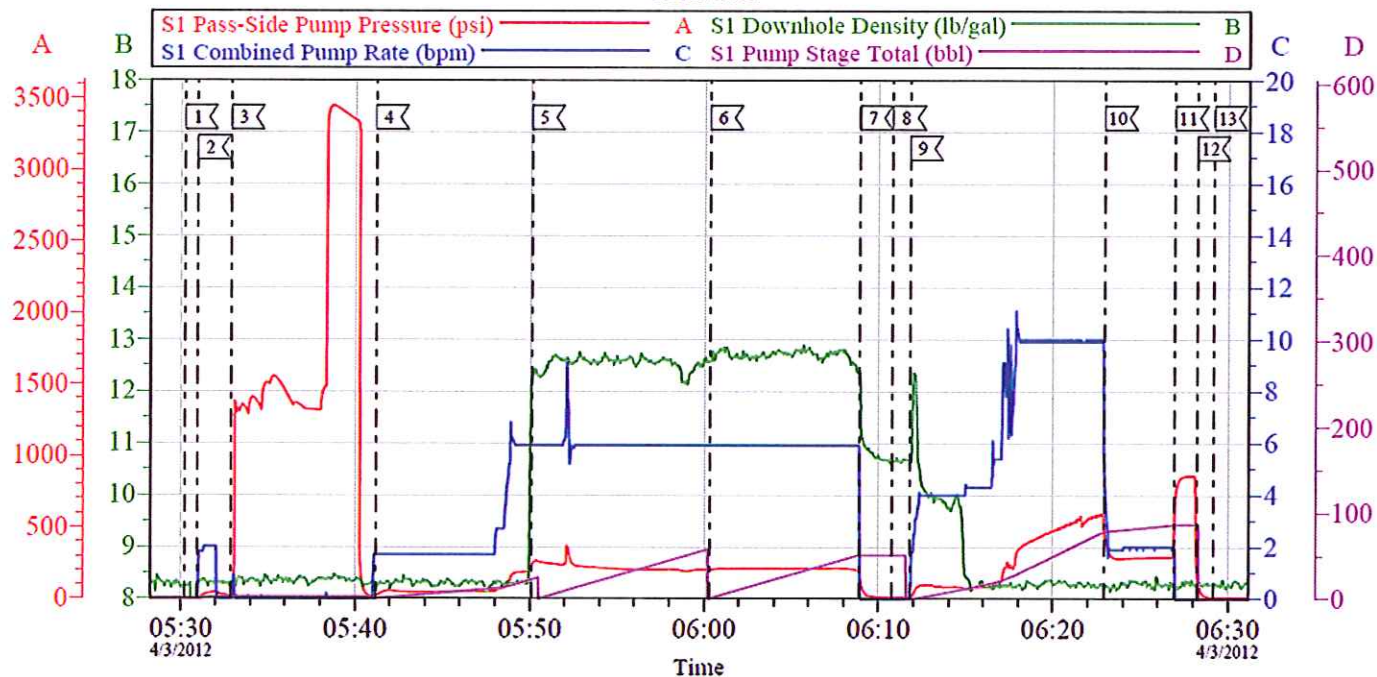
Sold To #: 300721	Ship To #: 2918360	Quote #:	Sales Order #: 9404851
Customer: WPX ENERGY ROCKY MOUNTAIN LLC-EBUS	Customer Rep: Hartl, Al		
Well Name: RWF	Well #: 311-36	API/UWI #: 05-045-20755	
Field: Rulison	City (SAP): RIFLE	County/Parish: Garfield	State: Colorado
Legal Description:			
Lat: N 39.485 deg. OR N 39 deg. 29 min. 6.745 secs.		Long: W 107.84 deg. OR W -108 deg. 9 min. 36.572 secs.	
Contractor: NABORS 576	Rig/Platform Name/Num: NABORS 576		
Job Purpose: Cement Surface Casing	Ticket Amount:		
Well Type: Development Well	Job Type: Cement Surface Casing		
Sales Person: MAYO, MARK	Srv Supervisor: HUGENTOBLE, LOGAN	MBU ID Emp #: 447333	

Activity Description	Date/Time	Cht #	Rate bbl/min	Volume bbl		Pressure psig		Comments
				Stage	Total	Tubing	Casing	
Assessment Of Location Safety Meeting	04/03/2012 03:25							ALL HES EMPLOYEES
Rig-Up Equipment	04/03/2012 03:30							1 HT-400 PUMP TRUCK, 1 660 BULK TRUCK, 1 F-450 P/U, 1 QUICK LATCH PLUG CONTAINER, 1 BAIL BASKET, 1 SWAGE
Pre-Job Safety Meeting	04/03/2012 05:15							ALL HES EMPLOYEES, RIG CREW, CO REP AND ANY 3RD PARTY VENDORS
Start Job	04/03/2012 05:30							TP 1157 FT, TD 1175 FT, FC 1113 FT, HOLE 13.5", MUD WT 10 PPG, RATE WILL BE 8-10-2, WILL BUMP 500 PSI OVER LAND PSI, RIG CIRCULATED HOLE FOR 1 HRS
Pump Water	04/03/2012 05:30		2	2			89.0	FILL LINES PRIOR TO PRESSURE TESTING LINES
Pressure Test	04/03/2012 05:32							NO LEAKS, KICK OUTS SET TO 3000 PSI FOR TEST.
Pump Spacer 1	04/03/2012 05:41		6	20			177.0	FRESH WATER
Activity Description	Date/Time	Cht #	Rate bbl/min	Volume bbl		Pressure psig		Comments
				Stage	Total	Tubing	Casing	

## Cementing Job Log

Pump Lead Cement	04/03/2012 05:50		6	68			202.0	160 SKS VERSACEM CMT TO BE MIXED AT 12.3 PPG, 2.38 YIELD, 13.75 GAL/SK, CMT TO BE WEIGHED VIA PRESSURE BALANCED MUD SCALES WET AND DRY SAMPLES SUBMITTED.
Pump Tail Cement	04/03/2012 06:00		6	60			215.0	160 SKS VERSACEM CMT TO BE MIXED AT 12.8 PPG, 2.11 YIELD, 11.75 GAL/SK, CMT TO BE WEIGHED VIA PRESSURE BALANCED MUD SCALES, WET AND DRY SAMPLES SUBMITTED,
Shutdown	04/03/2012 06:08							
Drop Plug	04/03/2012 06:10							PLUG LAUNCHED
Pump Displacement	04/03/2012 06:11		10	87			566.0	FRESH WATER, 20 BBLs CEMENT TO SURFACE
Slow Rate	04/03/2012 06:22		2				297.0	10 BBLs PRIOR TO CALCULATED DISPLACEMENT
Bump Plug	04/03/2012 06:26						805.0	PLUG LANDED
Check Floats	04/03/2012 06:28							FLOATS HOLDING
End Job	04/03/2012 06:29							THANK YOU FOR USING HES LOGAN HUGENTOBLE AND CREW
Post-Job Safety Meeting (Pre Rig-Down)	04/03/2012 06:35							ALL HES EMPLOYEES
Rig-Down Equipment	04/03/2012 06:45							
Pre-Convoy Safety Meeting	04/03/2012 07:55							ALL HES EMPLOYEES
Crew Leave Location	04/03/2012 08:00							LOCATION CLEAN
Call Out	04/03/2012 20:00							
Pre-Convoy Safety Meeting	04/03/2012 21:00							ALL HES EMPLOYEES
Arrive At Loc	04/03/2012 23:00							RIG STILL RUNNING CASING

### WPX- RWF 311-36 SURFACE



Local Event Log			
1 START JOB	05:30:11	2 PRIME LINES	05:30:55
3 PRESSURE TEST	05:32:52	4 PUMP H2O SPACER	05:41:09
5 PUMP LEAD CEMENT	05:50:04	6 PUMP TAIL CEMENT	06:00:18
7 SHUTDOWN	06:08:52	8 DROP PLUG	06:10:47
9 PUMP DISPLACEMENT	06:11:45	10 SLOW RATE	06:22:55
11 BUMP PLUG	06:26:57	12 CHECK FLOATS	06:28:13
13 END JOB	06:29:11		

Customer: WPX	Job Date: 03-Apr-2012	Sales Order #: 9404851
Well Description: 311-36	Job Type: SURFACE	ADC Used: YES
Company Rep: AL HARTL	Cement Supervisor: LOGAN HUGENTBLER	Elite #3: AARON SILVERTHORN

OptiCem v6.4.10  
03-Apr-12 07:07