

T10N, R58W, 6th P.M.



WHITTING OIL & GAS CORP.

2012 UELS Alum. Cap,  
0.3' High  
Lat: 40.860544°  
Long: 103.842372°

2012 UELS Alum. Cap,  
0.3' High  
Lat: 40.860597°  
Long: 103.832833°

S89°35'03"W - 2639.68' (Meas.)

2012 UELS Alum. Cap,  
0.3' High  
Lat: 40.860647°  
Long: 103.823592°

Well location, RAZOR #11-0241H (SURFACE LOCATION), located as shown in the SE 1/4 NE 1/4 of Section 11, T10N, R58W, 6th P.M., Weld County, Colorado.

BASIS OF ELEVATION

NOTE:  
THE PROPOSED BOTTOM HOLE FOR THIS WELL IS LOCATED IN LOT 1 OF SECTION 2, T10N, R58W, 6th P.M. AT 660' FNL, 660' FEL. IT BEARS N00°50'16"W 6872.58' FROM THE PROPOSED WELL HEAD.

N00°05'40"W - 2650.26' (Meas.)

2012 UELS Alum. Cap,  
0.3' High  
Lat: 40.853272°  
Long: 103.842356°

RAZOR #11-0241H  
Elev. Ungraded Ground = 4954'

N00°28'31"W - 2650.09' (Meas.)

2012 UELS Alum. Cap,  
0.3' High  
Lat: 40.853375°  
Long: 103.823214°

N00°05'47"W - 2650.22' (Meas.)

NOTE:  
SEE ADDENDUM TO LEGAL PLAT FOR EXISTING IMPROVEMENTS WITHIN 400' OF THE PROPOSED DISTURBANCE.

S89°34'57"W - 2657.19' (Meas.)

Stone  
Lat: 40.846000°  
Long: 103.842342°

2012 UELS Alum. Cap,  
0.4' High  
Lat: 40.846053°  
Long: 103.832739°

S89°34'53"W - 2657.25' (Meas.)

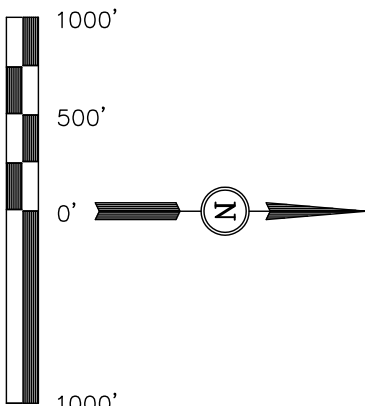
2010 UELS Alum. Cap,  
Flush with Ground  
Lat: 40.846106°  
Long: 103.823136°

N00°28'27"W - 2650.06' (Meas.)

BASIS OF BEARINGS IS A G.P.S. OBSERVATION.

BASIS OF BEARINGS

SPOT ELEVATION LOCATED AT THE NORTHEAST CORNER OF SECTION 15, T9N, R58W, 6th P.M. TAKEN FROM THE GATEHOOK SPRING, QUADRANGLE, COLORADO, WELD COUNTY, 7.5 MINUTE QUAD (TOPOGRAPHIC MAP) PUBLISHED BY THE UNITED STATES DEPARTMENT OF THE INTERIOR, GEOLOGICAL SURVEY. SAID ELEVATION IS MARKED AS BEING 4679 FEET.



CERTIFICATE

THIS IS TO CERTIFY THAT THE ABOVE PLAT WAS PREPARED FROM FIELD NOTES OF ACTUAL SURVEYS MADE BY ME OR UNDER MY SUPERVISION AND THAT THE SAME ARE TRUE AND CORRECT TO THE BEST OF MY KNOWLEDGE AND BELIEF.

REGISTERED LAND SURVEYOR  
REGISTRATION NO. 12492  
STATE OF COLORADO  
05-11-12

REVISED: 05-10-12 W.C.M.

UNTAN ENGINEERING & LAND SURVEYING

85 SOUTH 200 EAST - VERNAL, UTAH 84078

(435) 789-1017

LEGEND:

└ = 90° SYMBOL

● = PROPOSED WELL HEAD.

▲ = SECTION CORNERS LOCATED.

PDOP = 1.6

NAD 83 (SURFACE LOCATION)  
LATITUDE = 40°51'16.36" (40.854544)  
LONGITUDE = 103°49'31.55" (103.825431)

NAD 27 (SURFACE LOCATION)  
LATITUDE = 40°51'16.41" (40.854558)  
LONGITUDE = 103°49'29.75" (103.824931)

SCALE  
1" = 1000'

PARTY  
Z.B. A.G. W.C.M.

WEATHER  
COOL

DATE SURVEYED: 04-27-12

DATE DRAWN: 05-03-12

REFERENCES  
G.L.O. PLAT

FILE  
WHITTING OIL & GAS CORP.

T10N, R58W, 6th P.M.

WHITTING OIL & GAS CORP.

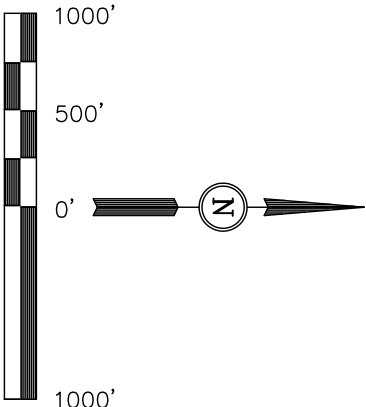
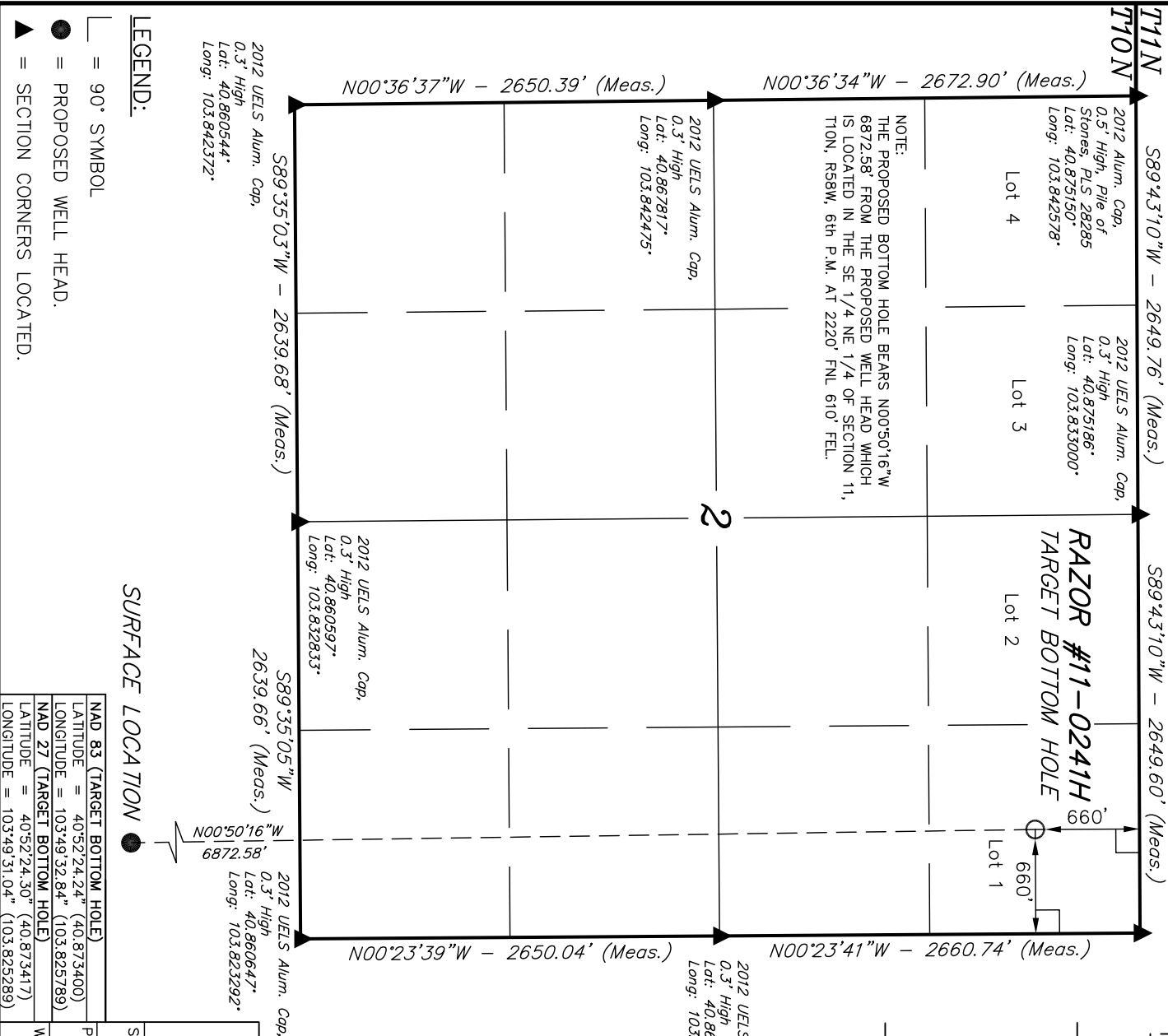
Well location, RAZOR #11-0241H (TARGET BOTTOM HOLE), located as shown in Lot 1 of Section 2, T10N, R58W, 6th P.M., Weld County, Colorado.

BASIS OF ELEVATION

SPOT ELEVATION LOCATED AT THE NORTHEAST CORNER OF SECTION 15, T9N, R58W, 6th P.M. TAKEN FROM THE GATEHOOK SPRING, QUADRANGLE, COLORADO, WELD COUNTY, 7.5 MINUTE QUAD (TOPOGRAPHIC MAP) PUBLISHED BY THE UNITED STATES DEPARTMENT OF THE INTERIOR, GEOLOGICAL SURVEY. SAID ELEVATION IS MARKED AS BEING 4679 FEET.

BASIS OF BEARINGS

BASIS OF BEARINGS IS A G.P.S. OBSERVATION.



CERTIFICATE

THIS IS TO CERTIFY THAT THE ABOVE PLAT WAS PREPARED FROM FIELD NOTES OF ACTUAL SURVEYS MADE BY ME OR UNDER MY SUPERVISION AND THAT THE SAME ARE TRUE AND CORRECT TO THE BEST OF MY KNOWLEDGE AND BELIEF.

REVISED: 05-10-12 W.C.M.

UTIAH ENGINEERING & LAND SURVEYING  
85 SOUTH 200 EAST - VERNAL, UTAH 84078  
(435) 789-1017

SCALE		DATE SURVEYED:	DATE DRAWN:
1" = 1000'		04-27-12	05-07-12
PARTY	REFERENCES		
Z.B. A.G. W.C.M.	G.L.O. PLAT		
WEATHER	FILE		
COOL	WHITTING OIL & GAS CORP.		

SURFACE LOCATION

LEGEND:

- 90° SYMBOL
- PROPOSED WELL HEAD.
- SECTION CORNERS LOCATED.