

The Road to Excellence Starts with Safety

Sold To #: 300721	Ship To #: 300721	Quote #:	Sales Order #: 9270786
Customer: WPX ENERGY ROCKY MOUNTAIN LLC-EBUS	Customer Rep: Oaks, Rick		
Well Name: RWF	Well #: 312-36	API/UWI #: 05-045-20763	
Field: RULISON	City (SAP): TULSA	County/Parish: Garfield	State: Colorado
Lat: N 39.485 deg. OR N 39 deg. 29 min. 6.652 secs.	Long: W 107.84 deg. OR W -108 deg. 9 min. 36.598 secs.		
Contractor: NABORS 576	Rig/Platform Name/Num: NABORS 576		
Job Purpose: Cement Surface Casing			
Well Type: Development Well	Job Type: Cement Surface Casing		
Sales Person: MAYO, MARK	Srvc Supervisor: NICKLE, RYON	MBU ID Emp #: 454759	

Job Personnel

HES Emp Name	Exp Hrs	Emp #	HES Emp Name	Exp Hrs	Emp #	HES Emp Name	Exp Hrs	Emp #
KEANE, JOHN Donovon	8.5	486519	NICKLE, RYON	8.5	454759	WADE, LOGAN D	8.5	488896
WALPOLE, DARREN Livingston	8.5	485294						

Equipment

HES Unit #	Distance-1 way	HES Unit #	Distance-1 way	HES Unit #	Distance-1 way	HES Unit #	Distance-1 way
10297346	60 mile	10951249	60 mile	11071559	60 mile	11542767	60 mile
11808835	60 mile						

Job Hours

Date	On Location Hours	Operating Hours	Date	On Location Hours	Operating Hours	Date	On Location Hours	Operating Hours
4/12/12	4	0	4/13/12	4.5	1.5			
TOTAL			Total is the sum of each column separately					

Job

Job Times

Formation Name	Formation Depth (MD)	Top	Bottom	Form Type	Job depth MD	Job Depth TVD	Water Depth	Perforation Depth (MD)	From	To	Called Out	Date	Time	Time Zone
	61		1146	BHST	1146. ft	1146. ft	3. ft					12 - Apr - 2012	15:30	MST
											On Location	12 - Apr - 2012	20:00	MST
											Job Started	13 - Apr - 2012	01:59	MST
											Job Completed	13 - Apr - 2012	03:00	MST
											Departed Loc	13 - Apr - 2012	04:30	MST

Well Data

Description	New / Used	Max pressure psig	Size in	ID in	Weight lbm/ft	Thread	Grade	Top MD ft	Bottom MD ft	Top TVD ft	Bottom TVD ft
-------------	------------	-------------------	---------	-------	---------------	--------	-------	-----------	--------------	------------	---------------

Tools and Accessories

Type	Size	Qty	Make	Depth	Type	Size	Qty	Make	Depth	Type	Size	Qty	Make
Guide Shoe					Packer					Top Plug	9.625	1	HES
Float Shoe					Bridge Plug					Bottom Plug			
Float Collar					Retainer					SSR plug set			
Insert Float										Plug Container	9.625	1	HES
Stage Tool										Centralizers			

Miscellaneous Materials

Gelling Agt	Conc	Surfactant	Conc	Acid Type	Qty	Conc	%
Treatment Fld	Conc	Inhibitor	Conc	Sand Type	Size		Qty

Fluid Data

Stage/Plug #: 1	Fluid #	Stage Type	Fluid Name	Qty	Qty uom	Mixing Density lbm/gal	Yield ft3/sk	Mix Fluid Gal/sk	Rate bbl/min	Total Mix Fluid Gal/sk
-----------------	---------	------------	------------	-----	---------	------------------------	--------------	------------------	--------------	------------------------

Stage/Plug #: 1	Fluid #	Stage Type	Fluid Name	Qty	Qty uom	Mixing Density lbm/gal	Yield ft3/sk	Mix Fluid Gal/sk	Rate bbl/min	Total Mix Fluid Gal/sk
-----------------	---------	------------	------------	-----	---------	------------------------	--------------	------------------	--------------	------------------------

Stage/Plug #: 1									
1	Fresh Water		20.00	bbl	8.33	.0	.0	4	
2	Lead Cement	VERSACEM (TM) SYSTEM (452010)	160.0	sacks	12.3	2.38	13.75	8	13.75
3	Tail Cement	VERSACEM (TM) SYSTEM (452010)	160.0	sacks	12.8	2.11	11.75	8	11.75
4	Displacement Fluid		85.00	bbl	8.34	.0	.0	10	
Calculated Values		Pressures		Volumes					
Displacement	85	Shut In: Instant		Lost Returns		Cement Slurry	128	Pad	
Top Of Cement		5 Min		Cement Returns		Actual Displacement	85	Treatment	
Frac Gradient		15 Min		Spacers	40	Load and Breakdown		Total Job	
Rates									
Circulating	RIG	Mixing	8	Displacement	10	Avg. Job	9		
Cement Left In Pipe	Amount	44.4 ft	Reason	Shoe Joint					
Frac Ring # 1 @	ID	Frac ring # 2 @	ID	Frac Ring # 3 @	ID	Frac Ring # 4 @	ID		
The Information Stated Herein Is Correct				Customer Representative Signature					

HALLIBURTON**Cementing Job Log***The Road to Excellence Starts with Safety*

The Road to Excellence Starts with Safety

Sold To #: 300721	Ship To #: 300721	Quote #:	Sales Order #: 9270786
Customer: WPX ENERGY ROCKY MOUNTAIN LLC-EBUS		Customer Rep: Oaks, Rick	
Well Name: RWF	Well #: 312-36	API/UWI #: 05-045-20763	
Field: RULISON	City (SAP): TULSA	County/Parish: Garfield	State: Colorado
Legal Description:			
Lat: N 39.485 deg. OR N 39 deg. 29 min. 6.652 secs.		Long: W 107.84 deg. OR W -108 deg. 9 min. 36.598 secs.	
Contractor: NABORS 576		Rig/Platform Name/Num: NABORS 576	
Job Purpose: Cement Surface Casing			Ticket Amount:
Well Type: Development Well		Job Type: Cement Surface Casing	
Sales Person: MAYO, MARK	Srvc Supervisor: NICKLE, RYON	MBU ID Emp #: 454759	

Activity Description	Date/Time	Cht #	Rate bbl/min	Volume bbl		Pressure psig		Comments
				Stage	Total	Tubing	Casing	
Call Out	04/12/2012 15:30							HES CEMENT CREW
Pre-Convoy Safety Meeting	04/12/2012 17:45							ALL HES CEMENT CREW
Crew Leave Yard	04/12/2012 18:00							
Arrive At Loc	04/12/2012 20:00							RIG PULLING DRILL PIPE
Assessment Of Location Safety Meeting	04/12/2012 20:05							ALL HES CEMENT CREW
Other	04/12/2012 20:10							SPOT EQUIPMENT; 1 CEMENTERS F 550, 1 ELITE PUMPING UNIT, 1 660 BULK TRANSPORT
Pre-Rig Up Safety Meeting	04/12/2012 20:20							ALL HES CEMENT CREW
Pre-Job Safety Meeting	04/13/2012 01:40							ALL HES CEMENT CREW, RIG CREW, COMPANY REP, AVAILABLE 3RD PARTY EE'S
Start Job	04/13/2012 01:59							TD- 1146' TP- 1101.73' SHOE- 44.4' CON - 61' W/ 18" ID LJ - 28' OH- 13.5" SURFACE CASING- 9.625" 32.3#/FT H-40 MUD- 9.1 PPG
Other	04/13/2012 01:59		2	2			39.0	FILL LINES, FRESH WATER
Activity Description	Date/Time	Cht #	Rate bbl/min	Volume bbl		Pressure psig		Comments
				Stage	Total	Tubing	Casing	

Sold To #: 300721

Ship To #: 300721

Quote #:

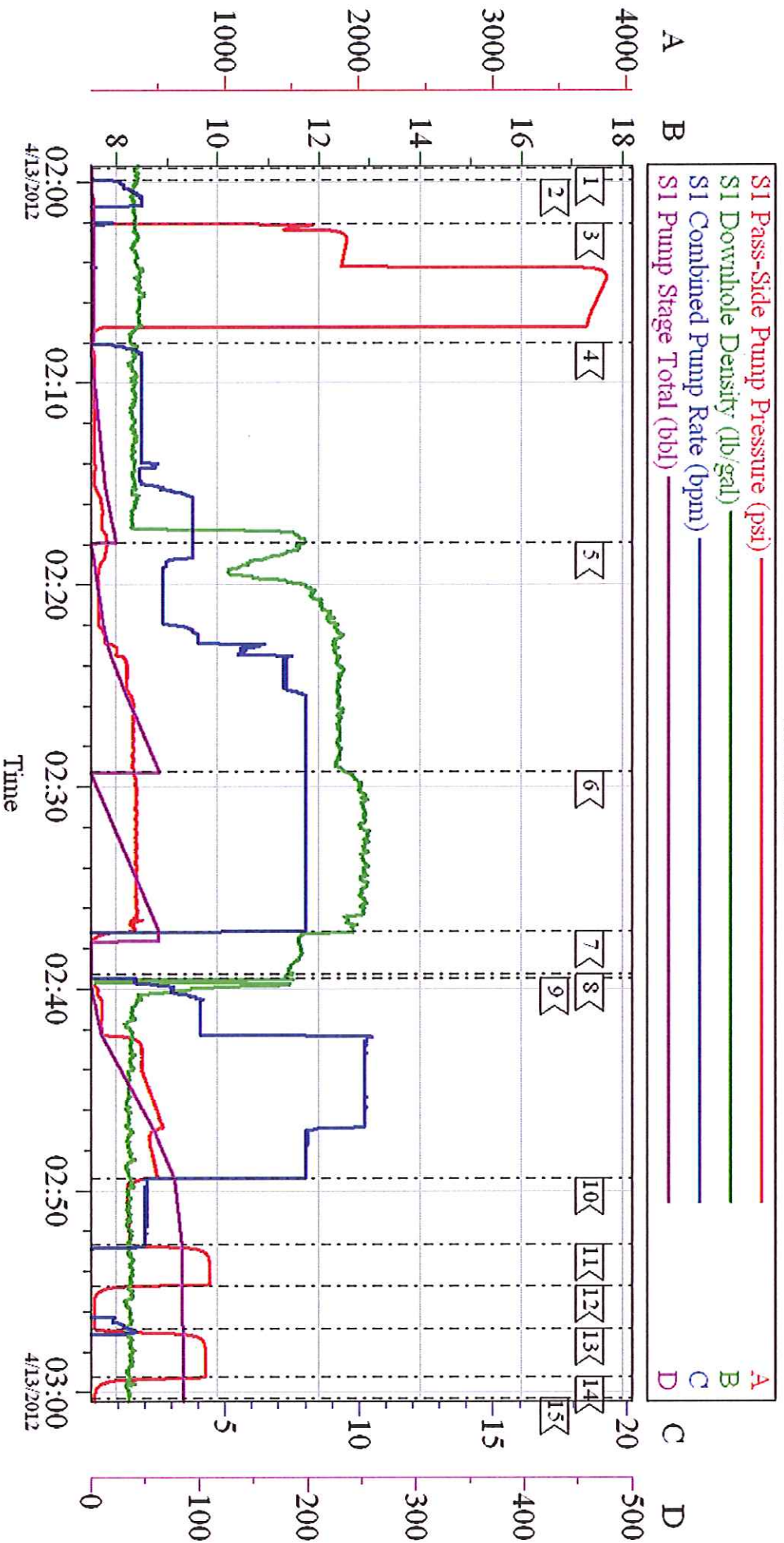
Sales Order #: 9270786

SUMMIT Version: 7.3.0021

Sunday, April 15, 2012 02:05:00

Pressure Test	04/13/2012 02:02							STALL OUT @ 1937 PSI, HELD FOR 30 SEC. PRESSURE UP TO 3880 PSI HELD FOR 2 MIN, PRESSURE DROP TO 3768 PSI
Pump Lead Cement	04/13/2012 02:17		8	67.8			323.0	160KS; 12.3 PPG, 2.38 FT3/SK, 13.75 GAL/SK
Pump Tail Cement	04/13/2012 02:29		8	60.1			330.0	160 SKS; 12.8 PPG, 2.11 FT3/SK, 11.75 GAL/SK
Shutdown	04/13/2012 02:37							WASH UP ON TOP OF PLUG PER CO REP
Drop Top Plug	04/13/2012 02:39							CO REP VERIFIED PLUG LAUNCHED
Pump Displacement	04/13/2012 02:39		10	75			458.0	FRESH WATER
Slow Rate	04/13/2012 02:49		2	10			361.0	
Bump Plug	04/13/2012 02:52						890.0	
Check Floats	04/13/2012 02:54							FLOATS HELD, RETURNED 1 BBLS H2O, PER CO REP BUMP PLUG 2ND TIME
Bump Plug	04/13/2012 02:56						886.0	FLOATS HELD, RETURNED 1 BBL H2O
Check Floats	04/13/2012 02:59							
End Job	04/13/2012 03:00							PIPE WAS NOT MOVED, GOOD RETURNS THROUGHOUT, 15BLS CEMENT TO SURFACE
Post-Job Safety Meeting (Pre Rig-Down)	04/13/2012 03:05							ALL HES CEMENT CREW
Pre-Convoy Safety Meeting	04/13/2012 04:15							ALL HES CEMENT CREW
Crew Leave Location	04/13/2012 04:30							THANK YOU FOR USING HALLIBURTON CEMENTING, RYON NICKLE AND CREW
Pump Spacer 1	04/13/2012 20:08		4	20			86.0	FRESH WATER

WPX - RWF 312-36 SURFACE



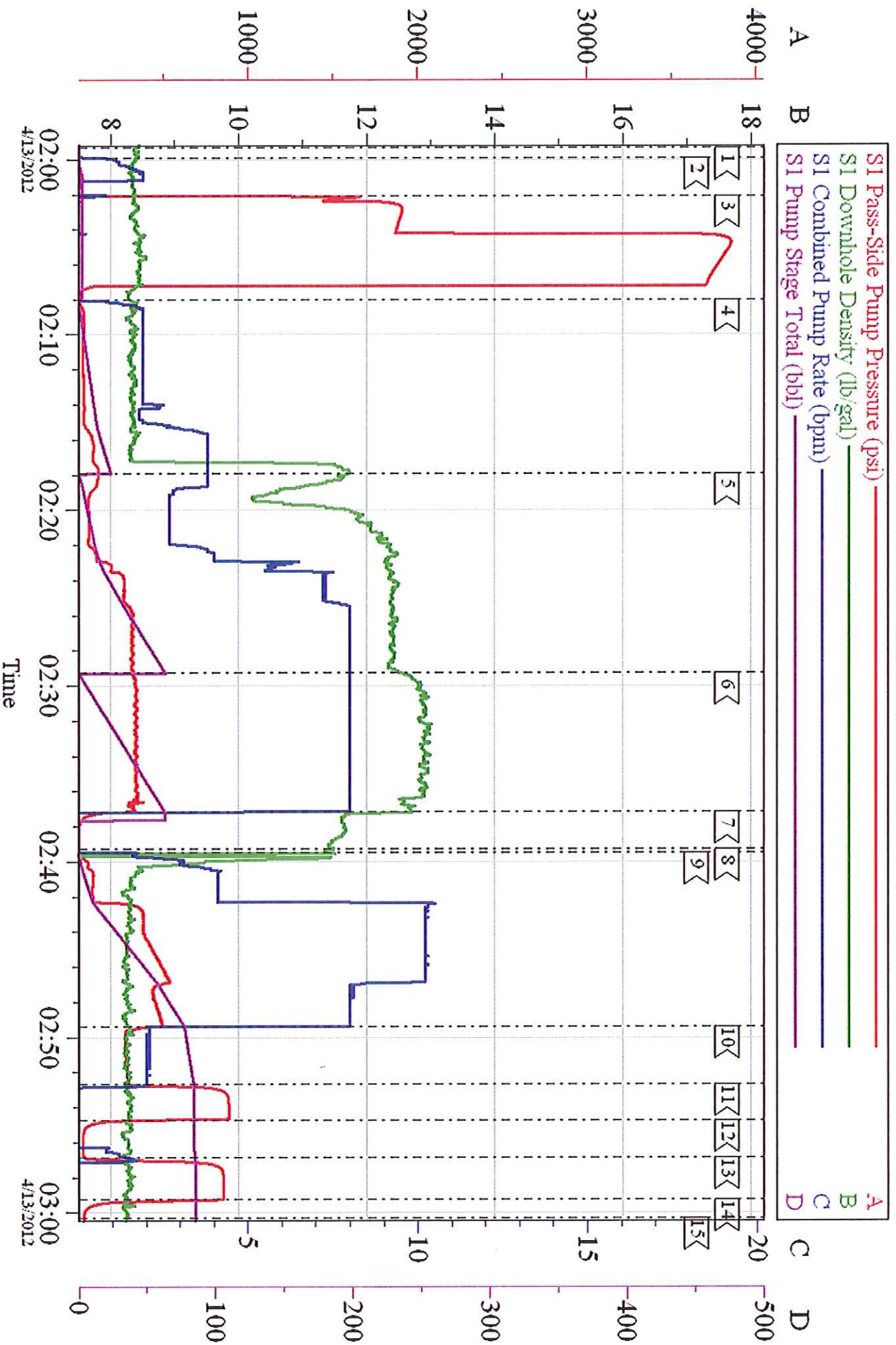
Customer: WPX ENERGY ROCKY MOUNTAIN LLC-EBUS
 Well Description: RWF 312-36
 Company Rep: RICK OAKS

Job Date: 13-Apr-2012
 Job Type: SURFACE
 Cement Supervisor: RYON NICKLE

Sales Order #: 9270786
 ADC Used: YES
 Elite # / Operator: EI / LOGAN WADE

WPX - RWF 312-36

SURFACE



Customer: WPX ENERGY ROCKY MOUNTAIN LLC-EBUS
 Well Description: RWF 312-36
 Company Rep: RICK OAKS

Job Date: 13-Apr-2012
 Job Type: SURFACE
 Cement Supervisor: RYON NICKLE

Sales Order #: 9270786
 ADC Used: YES
 Elite # / Operator: EI / LOGAN WADE