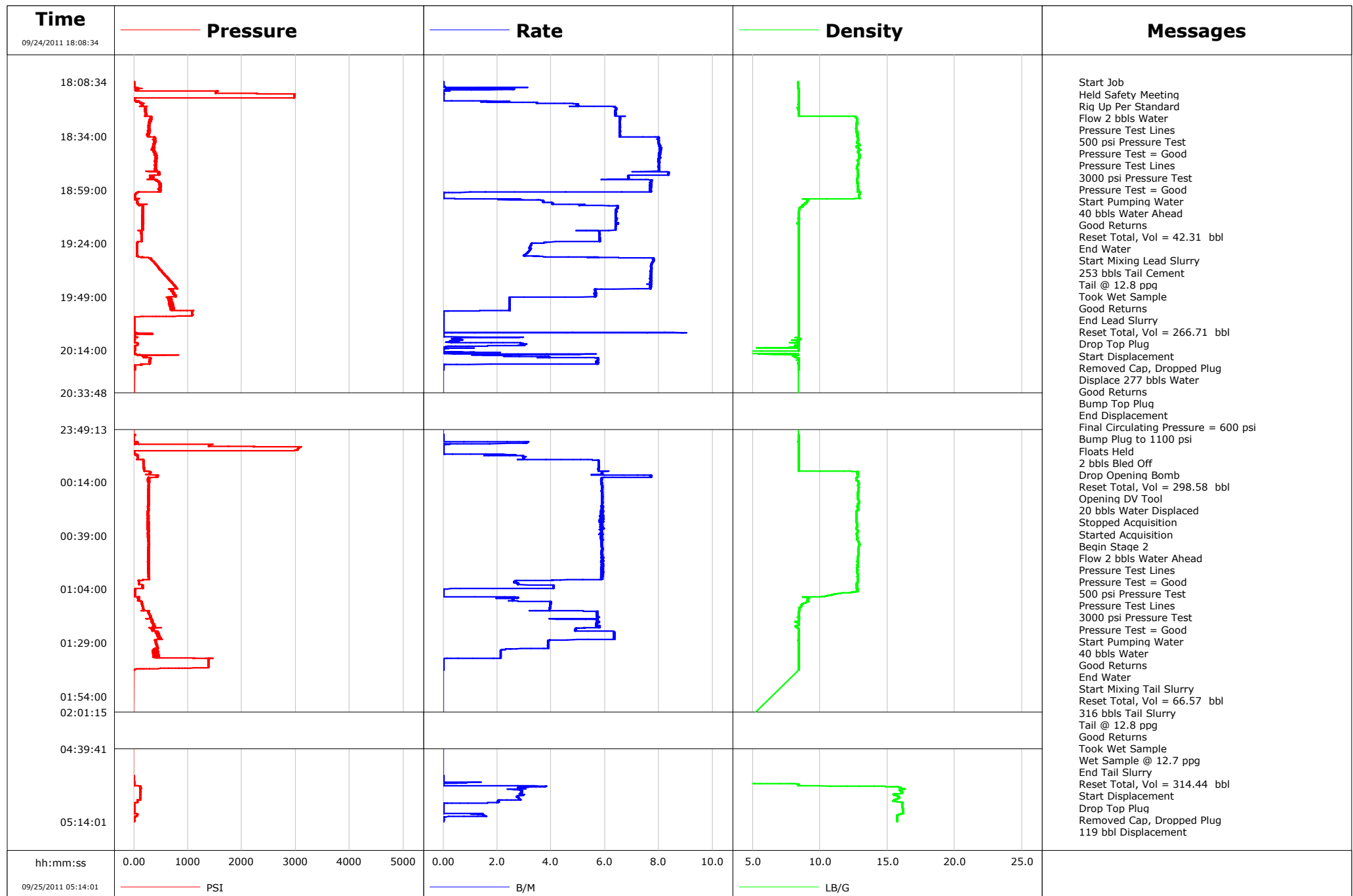


Well RGU 531-1-298
Field Ryan Gulch
Engineer Ryan Bowditch
Country United States

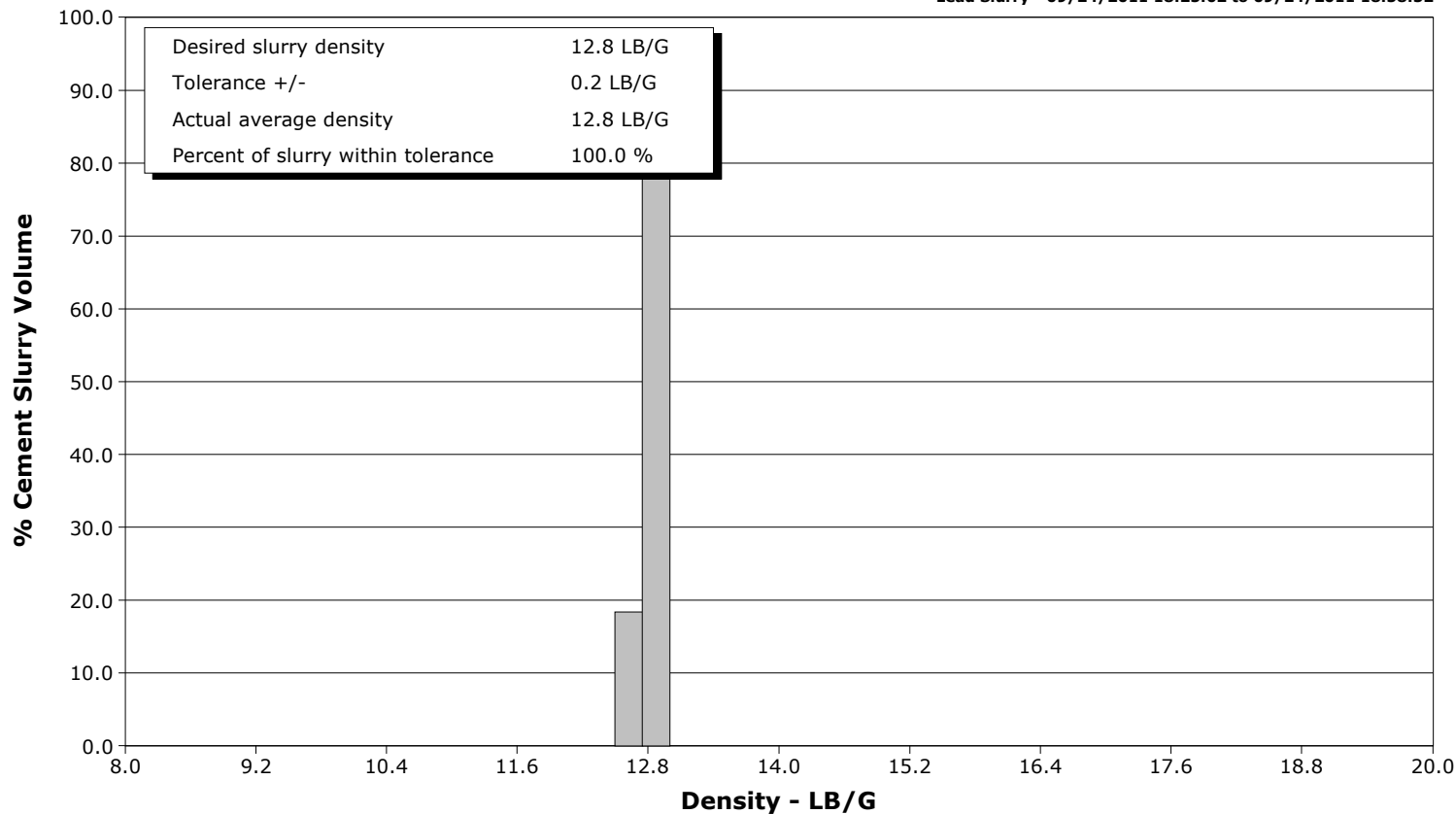
Client EnCana
SIR No. BUNM-00223
Job Type 9 5/8" 2-Stage Surface
Job Date 09-24-2011



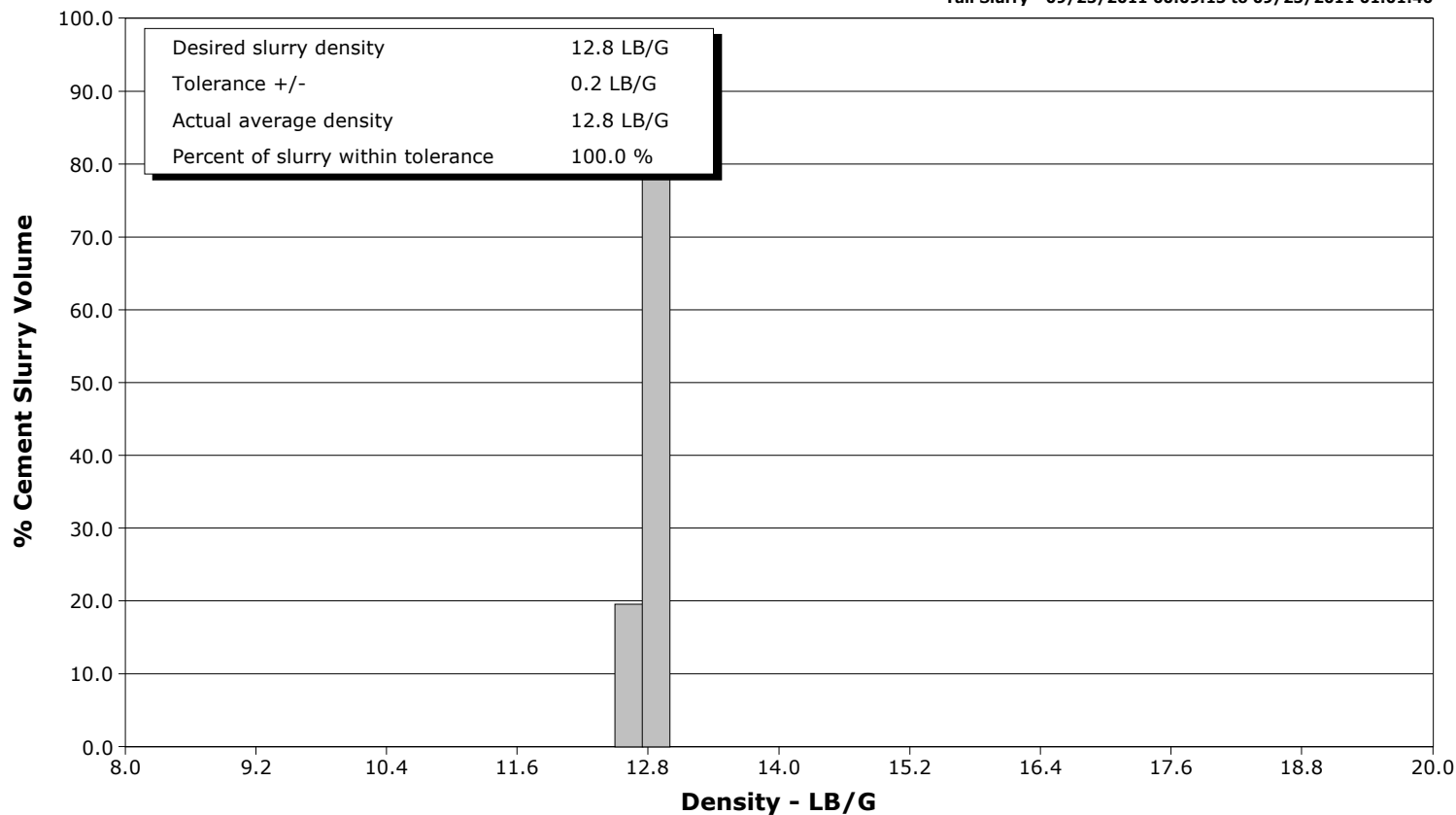
Well RGU 531-1-298
Field Ryan Gulch
Engineer Ryan Bowditch
Country United States

Client EnCana
SIR No. BUNM-00223
Job Type 9 5/8" 2-Stage Surface
Job Date 09-24-2011

Lead Slurry - 09/24/2011 18:25:02 to 09/24/2011 18:58:52



Tail Slurry - 09/25/2011 00:09:15 to 09/25/2011 01:01:40



					Customer EnCana			Job Number BUNM-00223	
Well RGU 531-1-298			Location (legal)			Schlumberger Location Grand Junction, CO		Job Start Sep/24/2011	
Field Ryan Gulch		Formation Name/Type Shale		Deviation 0 deg		Bit Size 13.5 in		Well MD 3606.0 ft	
County Rio Blanco		State/Province Colorado		BHP psi		BHST 119 degF		BHCT 87 degF	
Well Master 0631315365		API/UWI						Pore Press. Gradient lb/gal	
Rig Name Cyclone 29		Drilled For Gas		Service Via Land		Casing/Liner			
						Depth, ft		Size, in	
						Weight, lb/ft		Grade	
Offshore Zone		Well Class New		Well Type Development		80.0		20.0	
						3606.0		9.6	
						94.0		36.0	
						K55		8Rd	
Drilling Fluid Type		Max. Density lb/gal		Plastic Viscosity cP		Tubing/Drill Pipe			
						T/D		Depth, ft	
						Size, in		Weight, lb/ft	
						Grade		Thread	
Service Line Cementing		Job Type 9 5/8" 2-Stage Surface				0.0		0.0	
						0.0		0.0	
Max. Allowed Tub. Press 3000 psi		Max. Allowed Ann. Press 500 psi		WH Connection Single Cement head		Perforations/Open Hole			
						Top, ft		Bottom, ft	
						shot/ft		No. of Shots	
								Total Interval ft	
						ft		ft	
						ft		ft	
						Treat Down Casing		Displacement 276.0 bbl	
						Packer Type		Packer Depth ft	
						Tubing Vol. bbl		Casing Vol. 279.0 bbl	
						Annular Vol. 249.0 bbl		Openhole Vol. 502.0 bbl	
Casing/Tubing Secured <input checked="" type="checkbox"/>		1 Hole Vol. Circulated prior to Cement <input checked="" type="checkbox"/>				Casing Tools		Squeeze Job	
Lift Pressure 450 psi						Shoe Type Float		Squeeze Type	
Pipe Rotated <input type="checkbox"/>		Pipe Reciprocated <input type="checkbox"/>				Shoe Depth 3606.0 ft		Tool Type	
No. Centralizers		Top Plugs 1		Bottom Plugs		Stage Tool Type DV		Tool Depth ft	
Cement Head Type Single						Stage Tool Depth 1545.0 ft		Tail Pipe Size in	
Job Scheduled For Sep/24/2011		Arrived on Location Sep/24/2011		Leave Location Sep/24/2011		Collar Type Float		Tail Pipe Depth ft	
						Collar Depth ft		Sqz. Total Vol. bbl	
Date	Time 24-hr clock	Treating Pressure PSI	Flow Rate B/M	Density LB/G	Volume BBL	Solid Fraction NULL	Message		
09/24/2011	18:08:34	0	0.0	8.38	24.2	0	Started Acquisition		
09/24/2011	18:08:35	0	0.0	8.39	24.2	0	Held Safety Meeting		
09/24/2011	18:10:14	1	0.0	8.38	24.2	0			
09/24/2011	18:11:54	76	2.6	8.39	1.1	0			
09/24/2011	18:13:00	1548	0.0	8.41	2.2	0	Pressure Test Lines		
09/24/2011	18:13:01	1544	0.0	8.41	2.2	0	Pressure Test = Good		
09/24/2011	18:13:34	1516	0.0	8.41	2.2	0			
09/24/2011	18:15:14	2966	0.0	8.40	2.2	0			
09/24/2011	18:15:20	2967	0.0	8.40	2.2	0	Pressure Test Lines		
09/24/2011	18:15:21	2967	0.0	8.40	2.2	0	3000 psi Pressure Test		
09/24/2011	18:15:22	2967	0.0	8.40	2.2	0	Pressure Test = Good		
09/24/2011	18:16:54	3	0.0	8.41	2.2	0			
09/24/2011	18:18:34	120	3.5	8.41	4.8	0			
09/24/2011	18:18:39	149	3.5	8.41	5.1	0	Start Pumping Water		
09/24/2011	18:18:40	178	3.8	8.41	5.2	0	40 bbls Water Ahead		
09/24/2011	18:20:14	215	6.4	8.41	13.1	0			
09/24/2011	18:21:54	204	6.4	8.41	23.8	0			
09/24/2011	18:23:34	210	6.4	8.41	34.4	0			
09/24/2011	18:24:48	301	6.5	12.61	42.3	34	Reset Total, Vol = 42.31 bbl		
09/24/2011	18:24:49	321	6.5	12.61	42.4	34	End Water		
09/24/2011	18:25:02	325	6.5	12.63	43.8	35	Start Mixing Lead Slurry		

Well			Field		Job Start	Customer		Job Number
RGU 531-1-298			Ryan Gulch		Sep/24/2011	EnCana		BUNM-00223
Date	Time 24-hr clock	Treating Pressure PSI	Flow Rate B/M	Density LB/G	Volume BBL	Solid Fraction NULL	Message	
09/24/2011	18:25:14	314	6.5	12.64	45.1	36		
09/24/2011	18:26:54	293	6.5	12.76	56.1	37		
09/24/2011	18:28:34	276	6.5	12.74	67.0	35		
09/24/2011	18:30:14	276	6.5	12.67	77.9	35		
09/24/2011	18:31:54	274	6.5	12.78	88.8	34		
09/24/2011	18:33:34	263	6.5	12.78	99.7	34		
09/24/2011	18:35:14	385	8.0	12.80	111.8	34		
09/24/2011	18:36:54	373	8.0	12.76	125.1	36		
09/24/2011	18:37:41	384	8.0	12.89	131.4	36	Took Wet Sample	
09/24/2011	18:38:34	355	8.0	12.72	138.5	37		
09/24/2011	18:40:14	373	8.0	12.96	151.9	39		
09/24/2011	18:41:05	374	8.0	12.80	158.7	38	Good Returns	
09/24/2011	18:41:54	393	8.0	12.85	165.3	37		
09/24/2011	18:43:34	414	8.0	12.92	178.6	37		
09/24/2011	18:45:14	411	8.0	12.80	191.9	37		
09/24/2011	18:46:54	393	8.0	12.84	205.3	37		
09/24/2011	18:48:34	390	8.0	12.76	218.6	36		
09/24/2011	18:50:14	409	8.0	12.79	231.9	36		
09/24/2011	18:51:54	455	8.3	12.80	245.6	36		
09/24/2011	18:53:34	330	6.9	12.77	257.5	36		
09/24/2011	18:55:14	453	7.7	12.77	269.6	36		
09/24/2011	18:56:54	472	7.7	12.78	282.4	36		
09/24/2011	18:58:34	468	7.7	12.80	295.2	36		
09/24/2011	18:58:52	473	7.7	12.83	297.5	29	End Lead Slurry	
09/24/2011	19:00:14	68	0.6	12.97	307.4	0		
09/24/2011	19:01:54	23	0.0	12.89	307.4	0		
09/24/2011	19:03:34	22	2.9	9.09	308.3	56		
09/24/2011	19:03:50	46	3.5	9.05	309.0	56	Reset Total, Vol = 266.71 bbl	
09/24/2011	19:03:51	46	3.5	9.07	309.1	56	Drop Top Plug	
09/24/2011	19:03:52	47	3.5	9.08	309.1	56	Start Displacement	
09/24/2011	19:04:00	47	3.7	9.09	309.6	56	Removed Cap, Dropped Plug	
09/24/2011	19:05:14	58	4.0	8.90	314.3	53		
09/24/2011	19:05:57	233	4.1	8.79	317.2	26	Good Returns	
09/24/2011	19:06:54	171	6.5	8.69	322.5	21		
09/24/2011	19:08:34	158	6.4	8.44	333.3	1		
09/24/2011	19:10:14	160	6.4	8.41	343.9	7		
09/24/2011	19:11:54	167	6.4	8.41	354.6	8		
09/24/2011	19:13:34	165	6.4	8.41	365.3	5		
09/24/2011	19:15:14	156	6.4	8.41	375.9	1		
09/24/2011	19:16:54	148	6.4	8.41	386.6	10		
09/24/2011	19:18:34	128	5.8	8.41	396.9	0		
09/24/2011	19:20:14	132	5.8	8.41	406.5	0		
09/24/2011	19:21:54	140	5.8	8.42	416.2	0		
09/24/2011	19:23:34	67	3.8	8.41	425.4	0		
09/24/2011	19:25:14	47	3.2	8.41	431.1	0		
09/24/2011	19:26:54	49	3.2	8.41	436.4	0		
09/24/2011	19:28:34	49	3.1	8.41	441.7	0		
09/24/2011	19:30:14	70	3.4	8.41	446.9	0		
09/24/2011	19:31:54	328	7.8	8.41	458.2	0		
09/24/2011	19:33:34	390	7.7	8.41	471.1	0		
09/24/2011	19:35:14	446	7.7	8.41	484.0	0		
09/24/2011	19:36:54	506	7.7	8.41	496.8	0		
09/24/2011	19:38:34	566	7.7	8.41	509.7	0		
09/24/2011	19:40:14	624	7.7	8.41	522.5	0		

Well			Field		Job Start	Customer		Job Number
RGU 531-1-298			Ryan Gulch		Sep/24/2011	EnCana		BUNM-00223
Date	Time 24-hr clock	Treating Pressure PSI	Flow Rate B/M	Density LB/G	Volume BBL	Solid Fraction NULL	Message	
09/24/2011	19:43:34	741	7.7	8.41	548.1	0		
09/24/2011	19:45:14	797	7.7	8.41	560.9	0		
09/24/2011	19:46:54	729	5.7	8.41	570.7	0		
09/24/2011	19:48:34	750	5.7	8.41	580.1	0		
09/24/2011	19:50:14	675	2.5	8.41	586.1	0		
09/24/2011	19:51:54	661	2.5	8.41	590.2	0		
09/24/2011	19:53:34	670	2.5	8.41	594.3	0		
09/24/2011	19:55:14	734	2.5	8.41	598.4	0		
09/24/2011	19:56:25	1080	0.0	8.41	599.3	0	Bump Top Plug	
09/24/2011	19:56:26	1080	0.0	8.41	599.3	0	End Displacement	
09/24/2011	19:56:31	1079	0.0	8.41	599.3	0	Final Circulating Pressure = 600 psi	
09/24/2011	19:56:54	1080	0.0	8.41	599.3	0		
09/24/2011	19:58:30	4	0.0	8.41	599.3	0	Floats Held	
09/24/2011	19:58:34	5	0.0	8.41	599.3	0		
09/24/2011	20:00:14	6	0.0	8.41	599.3	0		
09/24/2011	20:01:54	6	0.0	8.41	599.3	0		
09/24/2011	20:03:34	6	0.0	8.41	599.3	0		
09/24/2011	20:05:14	6	0.0	8.41	599.3	0		
09/24/2011	20:06:54	5	0.0	8.41	601.0	0		
09/24/2011	20:08:34	8	0.5	8.44	602.0	25		
09/24/2011	20:09:02	8	0.5	8.54	602.3	25	Drop Opening Bomb	
09/24/2011	20:10:14	7	0.1	8.41	602.8	25		
09/24/2011	20:11:54	55	2.8	8.38	606.9	25		
09/24/2011	20:13:34	11	0.0	8.41	607.6	0		
09/24/2011	20:14:46	5	0.0	0.51	607.6	0	Reset Total, Vol = 298.58 bbl	
09/24/2011	20:15:14	7	0.8	1.72	608.1	0		
09/24/2011	20:16:15	404	2.2	8.36	609.8	0	Opening DV Tool	
09/24/2011	20:16:16	459	2.2	8.36	609.8	0	20 bbls Water Displaced	
09/24/2011	20:16:54	188	2.2	8.18	611.2	0		
09/24/2011	20:18:34	287	5.7	8.30	619.4	0		
09/24/2011	20:20:14	282	5.7	8.40	628.9	0		
09/24/2011	20:21:54	14	0.0	8.41	630.9	0		
09/24/2011	23:51:54	1	0.0	8.40	0.0	0		
09/24/2011	23:52:09	4	0.0	8.41	0.0	0	Begin Stage 2	
09/24/2011	23:53:34	-0	0.0	8.40	0.0	0		
09/24/2011	23:55:14	62	3.2	8.39	0.4	0		
09/24/2011	23:56:44	1404	0.0	8.41	2.7	0	Pressure Test Lines	
09/24/2011	23:56:45	1402	0.0	8.41	2.7	0	Pressure Test = Good	
09/24/2011	23:56:54	1396	0.0	8.41	2.7	0		
09/24/2011	23:58:30	3037	0.0	8.41	2.7	0	Pressure Test Lines	
09/24/2011	23:58:34	3035	0.0	8.41	2.7	0		
09/25/2011	00:00:14	7	0.0	8.41	2.7	0		
09/25/2011	00:01:05	56	2.6	8.41	2.9	0	Start Pumping Water	
09/25/2011	00:01:06	60	2.6	8.41	3.0	0	40 bbls Water	
09/25/2011	00:01:54	64	3.0	8.41	5.0	0		
09/25/2011	00:05:14	175	5.8	8.40	19.8	0		
09/25/2011	00:06:54	183	5.8	8.41	29.4	0		
09/25/2011	00:08:34	188	5.8	8.41	39.0	0		
09/25/2011	00:09:12	300	5.9	12.79	42.7	39	End Water	
09/25/2011	00:09:15	292	5.9	12.79	43.0	39	Start Mixing Tail Slurry	
09/25/2011	00:09:17	302	5.9	12.79	43.2	39	Reset Total, Vol = 66.57 bbl	
09/25/2011	00:09:18	304	5.9	12.79	43.3	39	316 bbls Tail Slurry	
09/25/2011	00:10:14	283	5.9	12.78	48.8	38		
09/25/2011	00:11:54	268	6.0	12.72	60.8	38		

Well RGU 531-1-298			Field Ryan Gulch		Job Start Sep/24/2011		Customer EnCana	Job Number BUNM-00223
Date	Time 24-hr clock	Treating Pressure PSI	Flow Rate B/M	Density LB/G	Volume BBL	Solid Fraction NULL	Message	
09/25/2011	00:15:14	275	5.9	12.85	80.4	34		
09/25/2011	00:16:54	262	5.9	12.85	90.2	34		
09/25/2011	00:18:34	262	5.9	12.81	100.0	35		
09/25/2011	00:20:14	269	5.9	12.81	109.8	35		
09/25/2011	00:21:54	265	5.9	12.81	119.6	34		
09/25/2011	00:23:34	274	5.9	12.89	129.5	36		
09/25/2011	00:25:14	269	5.9	12.76	139.3	36		
09/25/2011	00:26:54	270	5.9	12.85	149.1	37		
09/25/2011	00:28:34	262	5.9	12.68	158.9	36		
09/25/2011	00:30:14	259	5.9	12.70	168.7	35		
09/25/2011	00:31:54	266	5.8	12.71	178.5	35		
09/25/2011	00:33:34	249	5.9	12.75	188.2	36		
09/25/2011	00:35:14	270	5.9	12.73	198.0	35		
09/25/2011	00:35:17	278	5.8	12.73	198.3	35	Good Returns	
09/25/2011	00:35:44	270	5.9	12.72	201.0	35	Took Wet Sample	
09/25/2011	00:36:54	259	5.9	12.80	207.8	36		
09/25/2011	00:38:34	266	5.9	12.75	217.6	36		
09/25/2011	00:40:14	270	5.9	12.77	227.3	36		
09/25/2011	00:41:54	267	5.9	12.86	237.1	36		
09/25/2011	00:43:34	278	5.9	12.90	246.9	36		
09/25/2011	00:45:14	262	5.9	12.83	256.7	36		
09/25/2011	00:46:54	270	5.9	12.83	266.5	36		
09/25/2011	00:48:34	271	5.9	12.81	276.3	36		
09/25/2011	00:50:14	270	5.9	12.79	286.1	36		
09/25/2011	00:51:54	271	5.9	12.78	296.0	35		
09/25/2011	00:53:34	268	5.9	12.77	305.8	36		
09/25/2011	00:55:14	263	5.9	12.78	315.6	36		
09/25/2011	00:56:54	267	5.9	12.78	325.4	36		
09/25/2011	00:58:34	277	5.9	12.78	335.2	36		
09/25/2011	01:00:14	89	2.6	12.78	343.6	38		
09/25/2011	01:01:40	91	2.8	12.76	347.4	31	End Tail Slurry	
09/25/2011	01:01:54	90	2.8	12.69	348.1	36		
09/25/2011	01:03:34	160	4.1	12.71	354.7	39		
09/25/2011	01:05:14	18	0.0	12.63	355.5	0		
09/25/2011	01:06:54	19	0.0	10.76	355.5	0		
09/25/2011	01:08:29	86	2.6	9.06	357.7	43	Reset Total, Vol = 314.44 bbl	
09/25/2011	01:08:33	84	2.6	9.08	357.9	43	Start Displacement	
09/25/2011	01:08:34	83	2.6	9.09	357.9	43		
09/25/2011	01:08:35	82	2.6	9.09	358.0	43	Drop Top Plug	
09/25/2011	01:08:41	81	2.6	9.11	358.2	43	Removed Cap, Dropped Plug	
09/25/2011	01:08:43	82	2.6	9.10	358.3	43	Cement Returns to Surface	
09/25/2011	01:10:14	146	4.0	8.97	363.0	43		
09/25/2011	01:11:54	154	4.0	8.63	369.7	7		
09/25/2011	01:13:34	173	3.9	8.48	376.3	13		
09/25/2011	01:13:56	183	3.9	8.46	377.7	29	120 bbls Cement to Surface	
09/25/2011	01:15:14	266	5.7	8.42	384.6	25		
09/25/2011	01:16:54	304	5.7	8.44	394.1	15		
09/25/2011	01:18:34	342	5.7	8.41	403.2	6		
09/25/2011	01:20:14	348	5.7	8.41	412.7	0		
09/25/2011	01:21:54	392	5.8	8.28	422.3	11		
09/25/2011	01:23:34	336	4.9	8.40	430.6	0		
09/25/2011	01:25:14	437	6.3	8.41	441.1	0		
09/25/2011	01:26:54	456	6.3	8.41	451.6	0		
09/25/2011	01:28:34	408	3.9	8.41	460.0	0		

Well			Field		Job Start	Customer	Job Number
RGU 531-1-298			Ryan Gulch		Sep/24/2011	EnCana	BUNM-00223
Date	Time 24-hr clock	Treating Pressure PSI	Flow Rate B/M	Density LB/G	Volume BBL	Solid Fraction NULL	Message
09/25/2011	01:31:54	369	2.5	8.41	472.9	0	
09/25/2011	01:33:34	352	2.1	8.41	476.5	0	
09/25/2011	01:35:14	377	2.1	8.41	480.0	0	
09/25/2011	01:36:54	1377	0.0	8.41	482.5	0	
09/25/2011	01:38:34	1377	0.0	8.41	482.5	0	
09/25/2011	01:38:40	1378	0.0	8.41	482.5	0	Bump Top Plug
09/25/2011	01:38:41	1377	0.0	8.41	482.5	0	End Displacement
09/25/2011	01:38:46	1378	0.0	8.41	482.5	0	Final Circulating Pressure = 400 psi
09/25/2011	01:40:14	1380	0.0	8.41	482.5	0	
09/25/2011	01:41:29	3	0.0	8.41	482.5	0	Floats Held
09/25/2011	01:41:30	3	0.0	8.41	482.5	0	1 bbl Bled Back
09/25/2011	04:52:31	-0	0.0	0.40	0.0	0	Begin Top Out
09/25/2011	04:52:43	-0	0.0	0.40	0.0	0	Reset Total, Vol = 124.71 bbl
09/25/2011	04:53:34	0	0.0	0.40	0.0	0	
09/25/2011	04:55:14	5	0.0	0.40	0.0	0	
09/25/2011	04:56:54	5	0.0	8.41	0.3	0	
09/25/2011	04:58:34	121	3.0	16.13	4.4	54	
09/25/2011	05:00:14	118	2.9	16.09	9.2	53	
09/25/2011	05:01:54	115	2.8	15.73	14.0	42	
09/25/2011	05:03:34	113	2.8	15.61	18.6	46	
09/25/2011	05:05:14	15	0.9	16.11	22.3	0	
09/25/2011	05:06:54	5	0.0	16.11	22.4	0	
09/25/2011	05:08:34	4	0.0	16.14	22.4	0	
09/25/2011	05:10:14	9	0.4	16.16	22.4	3	
09/25/2011	05:11:54	10	0.0	15.73	24.4	0	
09/25/2011	05:13:33	4	0.0	15.74	24.4	0	24 bbls Pumped
09/25/2011	05:13:34	4	0.0	15.74	24.4	0	

Post Job Summary

Average Pump Rates, bbl/min					Volume of Fluid Injected, bbl						
Slurry 5.3	N2	Mud	Maximum Rate 8.0		Total Slurry 593.0	Mud 0.0	Spacer 40.0	N2			
Treating Pressure Summary, psi					Breakdown Fluid						
Maximum 3102	Final 1	Average 281	Bump Plug to 1000	Breakdown	Type	Volume bbl		Density lb/gal			
Avg. N2 Percent %	Designed Slurry Volume 569.0 bbl		Displacement 277.0 bbl	Mix Water Temp 65 degF	Cement Circulated to Surface? <input checked="" type="checkbox"/>		Volume 120.0 bbl				
					Washed Thru Perfs <input type="checkbox"/>		To ft				
Customer or Authorized Representative Joe Honeycutt			Schlumberger Supervisor Ryan Bowditch			Circulation Lost <input type="checkbox"/>	Job Completed <input type="checkbox"/>				
						-	-				