

The Road to Excellence Starts with Safety

Sold To #: 300721	Ship To #: 2898357	Quote #:	Sales Order #: 9153018
Customer: WILLIAMS PRODUCTION RMT INC - EBUS	Customer Rep: Hartl, Al		
Well Name: RWF	Well #: 31-36	API/UWI #: 05-045-20749	
Field: Rulison	City (SAP): RIFLE	County/Parish: Garfield	State: Colorado
Lat: N 39.486 deg. OR N 39 deg. 29 min. 8.099 secs.	Long: W 107.835 deg. OR W -108 deg. 9 min. 52.265 secs.		
Contractor: NABORS	Rig/Platform Name/Num: NABORS 576		
Job Purpose: Cement Surface Casing			
Well Type: Development Well	Job Type: Cement Surface Casing		
Sales Person: SCOTT, KYLE	Srv Supervisor: SMITH, CHRISTOPHER	MBU ID Emp #: 452619	

Job Personnel

HES Emp Name	Exp Hrs	Emp #	HES Emp Name	Exp Hrs	Emp #	HES Emp Name	Exp Hrs	Emp #
ARNOLD, EDWARD John	0.0	439784	EICKHOFF, ROBERT Edward	0.0	495311	MILLER, KEVIN Paul	24.0	443040
SALAZAR, PAUL Omar	0.0	445614	SMITH, CHRISTOPHER Scott	0.0	452619			

Equipment

HES Unit #	Distance-1 way	HES Unit #	Distance-1 way	HES Unit #	Distance-1 way	HES Unit #	Distance-1 way
10867322	60 mile	10998512	60 mile	11259882	60 mile	11560046	60 mile
11562538	60 mile	11583915	60 mile				

Job Hours

Date	On Location Hours	Operating Hours	Date	On Location Hours	Operating Hours	Date	On Location Hours	Operating Hours
TOTAL								

Total is the sum of each column separately

Job

Job Times

Formation Name	Top	Bottom	Called Out	Date	Time	Time Zone
Formation Depth (MD)			On Location	17 - Jan - 2012	18:00	MST
Form Type	BHST		Job Started	17 - Jan - 2012	22:00	MST
Job depth MD	1142. m	Job Depth TVD	Job Completed	18 - Jan - 2012	03:26	MST
Water Depth		Wk Ht Above Floor	Job Completed	18 - Jan - 2012	04:00	MST
Perforation Depth (MD)	From	To	Departed Loc	18 - Jan - 2012	04:21	MST

Well Data

Description	New / Used	Max pressure MPa	Size mm	ID mm	Weight kg/m	Thread	Grade	Top MD m	Bottom MD m	Top TVD m	Bottom TVD m
-------------	------------	------------------	---------	-------	-------------	--------	-------	----------	-------------	-----------	--------------

Sales/Rental/3rd Party (HES)

Description	Qty	Qty uom	Depth	Supplier
R/A DENSOMETER W/CHART RECORDER, /JOB, ZI	1	JOB		
PORT. DAS W/CEMWIN; ACQUIRE W/HES, ZI	1	JOB		
ADC (AUTO DENSITY CTRL) SYS, /JOB, ZI	1	JOB		
PLUG, CMTG, TOP, 9 5/8, HWE, 8.16 MIN/9.06 MA	1	EA		

Tools and Accessories

Type	Size	Qty	Make	Depth	Type	Size	Qty	Make	Depth	Type	Size	Qty	Make
Guide Shoe					Packer					Top Plug			
Float Shoe					Bridge Plug					Bottom Plug			
Float Collar					Retainer					SSR plug set			
Insert Float										Plug Container			
Stage Tool										Centralizers			

Miscellaneous Materials

Gelling Agt	Conc	Surfactant	Conc	Acid Type	Qty	Conc	%
Treatment Fld	Conc	Inhibitor	Conc	Sand Type	Size	Qty	

Fluid Data

Stage/Plug #: 1									
Fluid #	Stage Type	Fluid Name	Qty	Qty uom	Mixing Density kg/m3	Yield m3/sk	Mix Fluid m3/tonne	Rate m3/min	Total Mix Fluid m3/tonne
1	Fresh Water		20.00	bbl	8.33	.0	.0	.0	
2	VersaCem Lead	VERSACEM (TM) SYSTEM (452010)	160.0	sacks	12.3	2.38	13.75		13.75
	13.75 Gal	FRESH WATER							
3	VersaCem Tail	VERSACEM (TM) SYSTEM (452010)	160.0	sacks	12.8	2.11	11.75		11.75
	11.75 Gal	FRESH WATER							
4	Displacement Fluid		85.00	bbl	8.34	.0	.0	.0	
Calculated Values		Pressures		Volumes					
Displacement		Shut In: Instant		Lost Returns		Cement Slurry		Pad	
Top Of Cement		5 Min		Cement Returns		Actual Displacement		Treatment	
Frac Gradient		15 Min		Spacers		Load and Breakdown		Total Job	
Rates									
Circulating		Mixing		Displacement		Avg. Job			
Cement Left In Pipe		Amount	0 ft	Reason	Shoe Joint				
Frac Ring # 1 @	ID	Frac ring # 2 @	ID	Frac Ring # 3 @	ID	Frac Ring # 4 @	ID		
The Information Stated Herein Is Correct				Customer Representative Signature					

The Road to Excellence Starts with Safety

Sold To #: 300721		Ship To #: 2898357		Quote #:		Sales Order #: 9153018	
Customer: WILLIAMS PRODUCTION RMT INC - EBUS				Customer Rep: Hartl, Al			
Well Name: RWF			Well #: 31-36			API/UWI #: 05-045-20749	
Field: Rulison		City (SAP): RIFLE		County/Parish: Garfield			State: Colorado
Legal Description:							
Lat: N 39.486 deg. OR N 39 deg. 29 min. 8.099 secs.				Long: W 107.835 deg. OR W -108 deg. 9 min. 52.265 secs.			
Contractor: NABORS			Rig/Platform Name/Num: NABORS 576				
Job Purpose: Cement Surface Casing					Ticket Amount:		
Well Type: Development Well			Job Type: Cement Surface Casing				
Sales Person: SCOTT, KYLE			Srv Supervisor: SMITH, CHRISTOPHER			MBU ID Emp #: 452619	

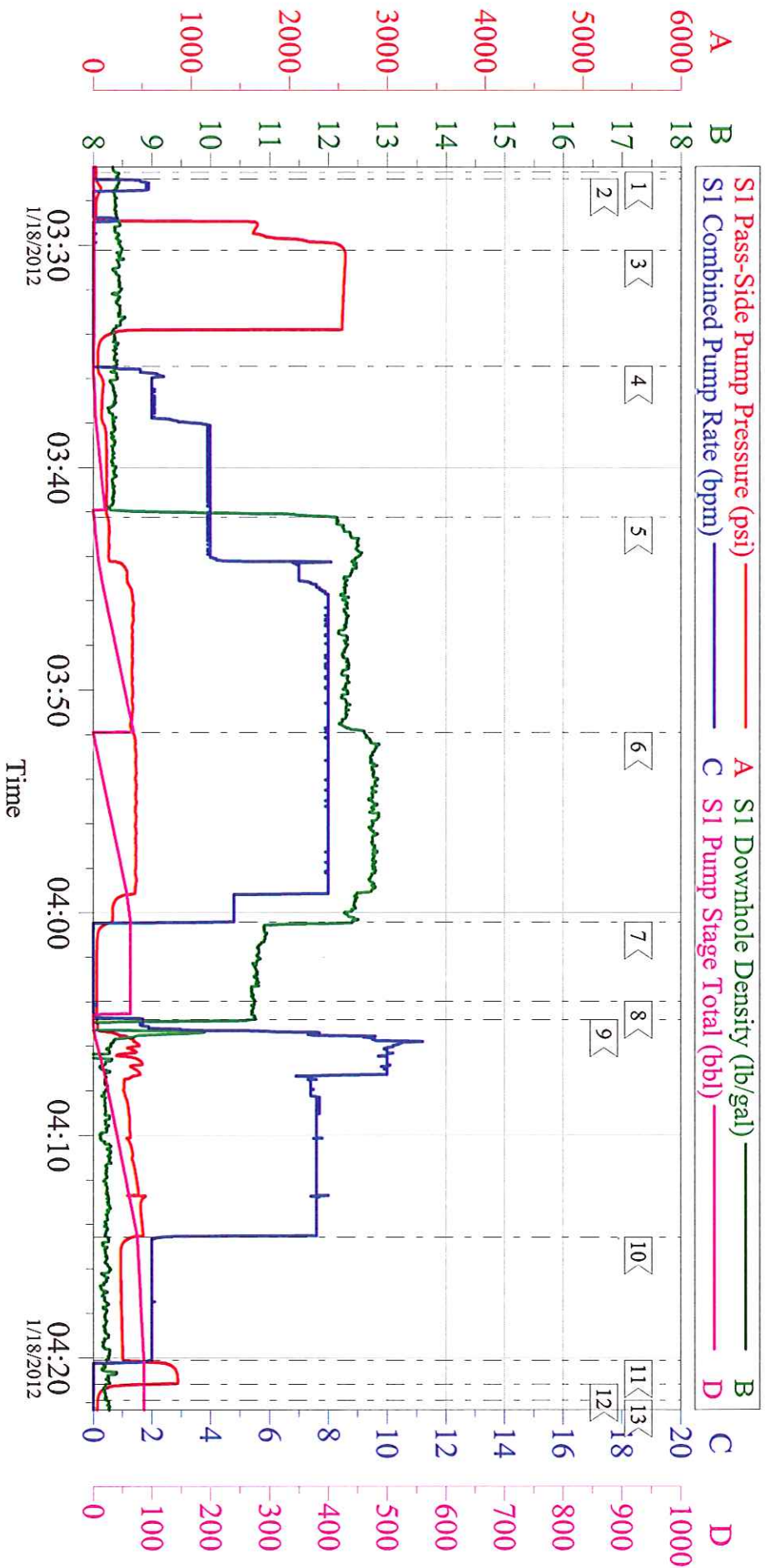
Activity Description	Date/Time	Cht #	Rate m3/min	Volume m3		Pressure MPa		Comments
				Stage	Total	Tubing	Casing	
Pre-Convoy Safety Meeting	01/17/2012 20:00							ALL HES PERSONEL
Crew Leave Yard	01/17/2012 20:15							
Arrive At Loc	01/17/2012 22:00							RIG WAITING ON CASERS.
Assessment Of Location Safety Meeting	01/17/2012 22:15							ALL HES PERSONEL
Rig-Up Equipment	01/17/2012 22:30							
Pre-Job Safety Meeting	01/18/2012 03:15							ALL HES PERSONEL AND RIG CREW
Start Job	01/18/2012 03:26							TD 1142', TP 1122', SJ 41', OH 13.5", CSG 9.625" 32.3# H40 , MUD 9.7PPG.
Other	01/18/2012 03:27		2	2			78.0	FILL LINES
Pressure Test	01/18/2012 03:30		0.5	0.5				ALL LINES HELD PRESSURE @ 2555 PSI
Pump Spacer 1	01/18/2012 03:35		4	20			140.0	FRESH WATER
Pump Lead Cement	01/18/2012 03:42		8	67.8			375.0	160 SKS, 12.3 PPG, 2.38 FT3/SK, 13.75 GAL/SK, SET UP TIME 2:38 @ 70 BC.
Pump Tail Cement	01/18/2012 03:51		8	60.1			440.0	160 SKS, 12.8 PPG, 2.11 FT3/ SK, 11.75 GAL/SK, SET UP TIME 1:51 @ 70 BC.
Shutdown	01/18/2012 04:00							
Drop Top Plug	01/18/2012 04:03							PLUG WENT

Cementing Job Log

Activity Description	Date/Time	Cht #	Rate m3/ min	Volume m3		Pressure MPa		Comments
				Stage	Total	Tubing	Casing	
Pump Displacement	01/18/2012 04:04		7.5	75.1			460.0	FRESH WATER
Slow Rate	01/18/2012 04:14		2	10			305.0	
Bump Plug	01/18/2012 04:18						875.0	PLUG BUMPED
Check Floats	01/18/2012 04:21							FLOATS HELD
End Job	01/18/2012 04:21							GOOD CIRCULATION THROUGHOUT JOB, 20 BBLs OF CEMENT TO SURFACE, PIPE WAS NOT MOVED DURING THE JOB.
Post-Job Safety Meeting (Pre Rig-Down)	01/18/2012 04:30							ALL HES PERSONEL
Rig-Down Completed	01/18/2012 05:15							
Depart Location Safety Meeting	01/18/2012 05:25							ALL HES PERSONEL
Crew Leave Location	01/18/2012 05:30							
Other	01/18/2012 05:31							THANK YOU FOR CHOOSING HALLIBURTON, CHRIS SMITH AND CREW

WILLIAMS - RWF 31-36

9.625" SURFACE

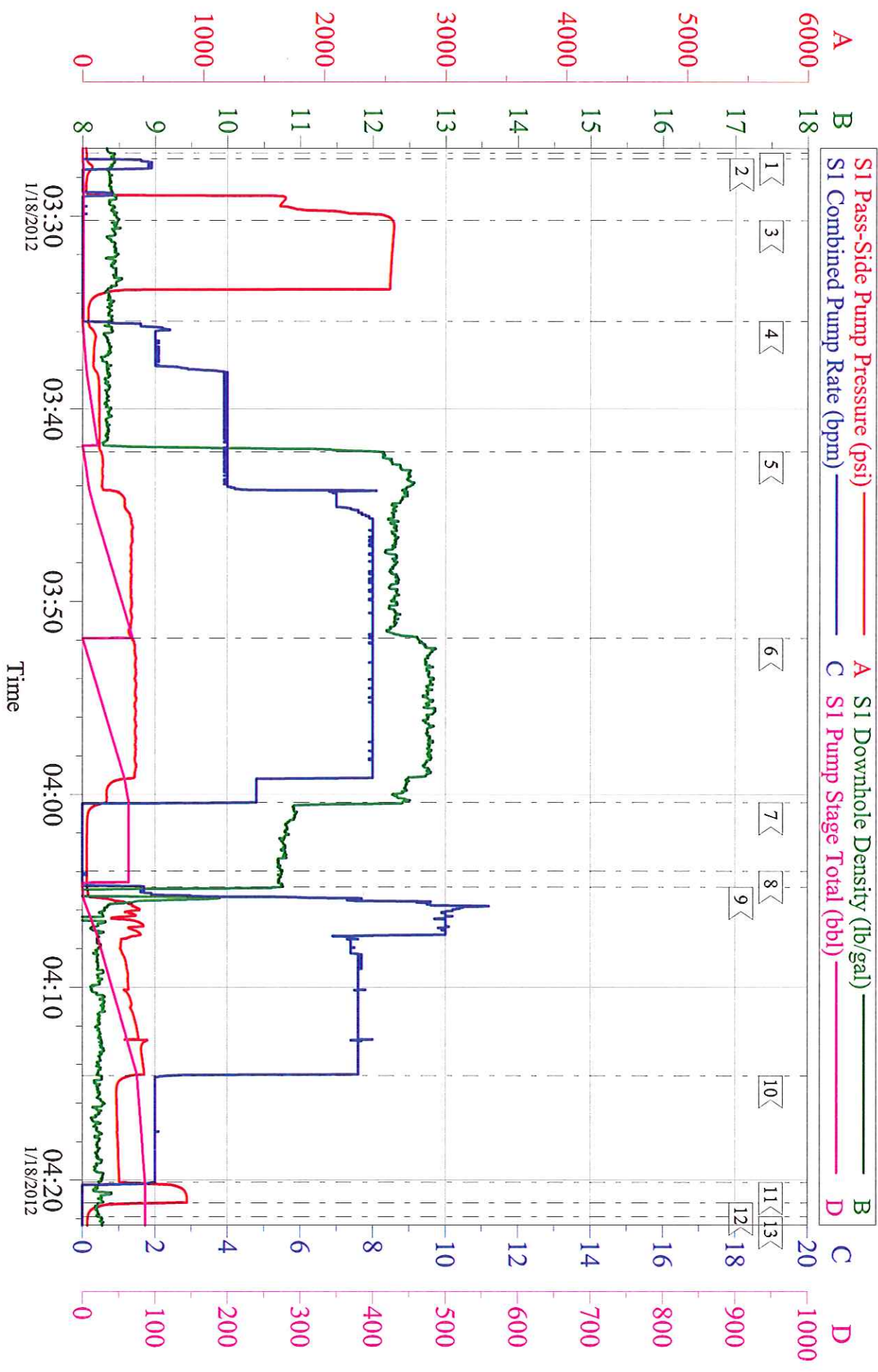


Customer: WILLIAMS PRODUCTION RMT INC - EBUS
 Well Description: RWF 31-36
 Company Rep: L. NICHOLAS

Job Date: 18-Jan-2012
 Job Type: SURFACE
 Cement Supervisor: C.SMITH

Sales Order #: 9153018
 ADC Used: YES
 Elite #: R.EICKHOFF

WILLIAMS - RWF 31-36 9.625" SURFACE



Customer: WILLIAMS PRODUCTION RMT INC - EBUS	Job Date: 18-Jan-2012	Sales Order #: 9153018
Well Description: RWF 31-36	Job Type: SURFACE	ADC Used: YES
Company Rep: L. NICHOLAS	Cement Supervisor: C.SMITH	Elite #5: R.EICKHOFF