

HALLIBURTON

WILLIAMS PRODUCTION RMT INC - EBUS

TR 42-32-597
Parachute
Garfield County , Colorado

Cement Surface Casing

12-Aug-2011

Job Site Documents

The Road to Excellence Starts with Safety

Sold To #: 300721	Ship To #: 2867042	Quote #:	Sales Order #: 8337545
Customer: WILLIAMS PRODUCTION RMT INC - EBUS	Customer Rep: Oaks, Rick		
Well Name: TR	Well #: 42-32-597	API/UWI #: 05-045-19490	
Field: Parachute	City (SAP): PARACHUTE	County/Parish: Garfield	State: Colorado
Lat: N 39.575 deg. OR N 39 deg. 34 min. 28.47 secs.	Long: W 108.294 deg. OR W -109 deg. 42 min. 23.191 secs.		
Contractor: H&P 278	Rig/Platform Name/Num: H&P 278		
Job Purpose: Cement Surface Casing			
Well Type: Development Well	Job Type: Cement Surface Casing		
Sales Person: SCOTT, KYLE	Srv Supervisor: LEIST, JAMES	MBU ID Emp #: 362787	

Job Personnel

HES Emp Name	Exp Hrs	Emp #	HES Emp Name	Exp Hrs	Emp #	HES Emp Name	Exp Hrs	Emp #
HAYES, JESSE Doug	6	403601	hermandez, aaron	6	489820	HONE, AARON D	6	381285
LEIST, JAMES R	6	362787	SMITH, CHRISTOPHER Scott	6	452619	weyermqn, jermey	6	477287

Equipment

HES Unit #	Distance-1 way	HES Unit #	Distance-1 way	HES Unit #	Distance-1 way	HES Unit #	Distance-1 way
10551730C	90 mile	10973571	90 mile	11259882	90 mile	11583916	90 mile
10897817-11307428	90 MILE	11338211-10025103	90 MILE				

Job Hours

Date	On Location Hours	Operating Hours	Date	On Location Hours	Operating Hours	Date	On Location Hours	Operating Hours
8-11-11	2	0	8-12-11	9				
TOTAL			Total is the sum of each column separately					

Job

Job Times

Formation Name	Formation Depth (MD)	Top	Bottom	Form Type	Job depth MD	Job Depth TVD	Water Depth	Perforation Depth (MD)	From	To	Called Out	Date	Time	Time Zone
				BHST	28760. ft	2876. ft		Wk Ht Above Floor		4. ft	On Location	11 - Aug - 2011	12:00	MST
											Job Started	12 - Aug - 2011	02:26	MST
											Job Completed	12 - Aug - 2011	08:53	MST
											Departed Loc	12 - Aug - 2011	11:00	MST

Well Data

Description	New / Used	Max pressure psig	Size in	ID in	Weight lbm/ft	Thread	Grade	Top MD ft	Bottom MD ft	Top TVD ft	Bottom TVD ft
-------------	------------	-------------------	---------	-------	---------------	--------	-------	-----------	--------------	------------	---------------

Sales/Rental/3rd Party (HES)

Description	Qty	Qty uom	Depth	Supplier
PLUG,CMTG,TOP,9 5/8,HWE,8.16 MIN/9.06 MA	1	EA		

Tools and Accessories

Type	Size	Qty	Make	Depth	Type	Size	Qty	Make	Depth	Type	Size	Qty	Make
Guide Shoe					Packer					Top Plug	9.625	1	
Float Shoe					Bridge Plug					Bottom Plug			
Float Collar					Retainer					SSR plug set			
Insert Float										Plug Container	9.625	1	
Stage Tool										Centralizers			

Miscellaneous Materials

Gelling Agt	Conc	Surfactant	Conc	Acid Type	Qty	Conc	%
Treatment Fld	Conc	Inhibitor	Conc	Sand Type	Size	Qty	

Fluid Data

Stage/Plug #: 1	Fluid #	Stage Type	Fluid Name	Qty	Qty uom	Mixing Density lbm/gal	Yield ft ³ /sk	Mix Fluid Gal/sk	Rate bbl/min	Total Mix Fluid Gal/sk
-----------------	---------	------------	------------	-----	---------	------------------------	---------------------------	------------------	--------------	------------------------

Stage/Plug #: 1									
Fluid #	Stage Type	Fluid Name	Qty	Qty uom	Mixing Density lbm/gal	Yield ft ³ /sk	Mix Fluid Gal/sk	Rate bbl/min	Total Mix Fluid Gal/sk
1	Fresh Water		10.00	bbl	8.34	.0	.0	.0	
2	SUPER FLUSH - XLC	SUPERFLUSH-XLC - SBM (549694)	50.00	bbl	11.	.0	.0	.0	
3	Fresh Water		10.00	bbl	8.33	.0	.0	.0	
4	Lead Cement	EXTENDACEM (TM) SYSTEM (452981)	1200.0	sacks	12.3	2.23	12.21		12.21
	0.25 lbm	POLY-E-FLAKE (101216940)							
	0.3 %	STEELSEAL, 50 LB BAG (101236842)							
	1.5 lbm	PHENO SEAL MEDIUM, 40 LB BAG (101307743)							
	1.5 lbm	WALL-NUT COARSE - 50 LB BAG (201097)							
	12.21 Gal	FRESH WATER							
5	Tail Cement	EXTENDACEM (TM) SYSTEM (452981)	250.0	sacks	12.6	2.07	11.04		11.04
	0.25 lbm	POLY-E-FLAKE (101216940)							
	0.3 %	STEELSEAL, 50 LB BAG (101236842)							
	1.5 lbm	PHENO SEAL MEDIUM, 40 LB BAG (101307743)							
	1.5 lbm	WALL-NUT COARSE - 50 LB BAG (201097)							
	11.04 Gal	FRESH WATER							
6	Displacement		215.00	bbl	8.34	.0	.0	.0	
Calculated Values		Pressures		Volumes					
Displacement	220	Shut In: Instant		Lost Returns	853.5	Cement Slurry	568.8	Pad	
Top Of Cement	?	5 Min		Cement Returns	0	Actual Displacement	220	Treatment	
Frac Gradient		15 Min		Spacers	70	Load and Breakdown		Total Job	853.5
Rates									
Circulating	NONE	Mixing	5	Displacement	4	Avg. Job	3		
Cement Left In Pipe	Amount	43.28 ft	Reason	Shoe Joint					
Frac Ring # 1 @	ID	Frac ring # 2 @	ID	Frac Ring # 3 @	ID	Frac Ring # 4 @	ID		
The Information Stated Herein Is Correct				Customer Representative Signature					

The Road to Excellence Starts with Safety

Sold To #: 300721	Ship To #: 2867042	Quote #:	Sales Order #: 8337545
Customer: WILLIAMS PRODUCTION RMT INC - EBUS	Customer Rep: Oaks, Rick		
Well Name: TR	Well #: 42-32-597	API/UWI #: 05-045-19490	
Field: Parachute	City (SAP): PARACHUTE	County/Parish: Garfield	State: Colorado
Legal Description:			
Lat: N 39.575 deg. OR N 39 deg. 34 min. 28.47 secs.		Long: W 108.294 deg. OR W -109 deg. 42 min. 23.191 secs.	
Contractor: H&P 278	Rig/Platform Name/Num: H&P 278		
Job Purpose: Cement Surface Casing		Ticket Amount:	
Well Type: Development Well	Job Type: Cement Surface Casing		
Sales Person: SCOTT, KYLE	Srv Supervisor: LEIST, JAMES	MBU ID Emp #: 362787	

Activity Description	Date/Time	Cht #	Rate bbl/ min	Volume bbl		Pressure psig		Comments
				Stage	Total	Tubing	Casing	
Call Out	08/11/2011 12:00							TP-2876, TD-2877, S.J.- 43.28, HOLE- 14 3/4, MUD#- 9.1
Pre-Convoy Safety Meeting	08/11/2011 15:00							WITH ALL HES PERSONNEL
Arrive At Loc	08/11/2011 20:00							CASING CREW RUNNING CASING, TRANSPORT ON LOCATION AT 2200, DONE WITH TRANSPORT @ 0600
Pre-Rig Up Safety Meeting	08/11/2011 21:00							WITH ALL ON HES PERSONNEL
Rig-Up Completed	08/11/2011 22:00							TWO H2O HOSES ONE TO UP RIGHT ONE TO DAY TANK, IRON TO STAND PIPE ON RIG, SUPERFLUSH TRUCK PASS. SIDE OF PUMP.
Pre-Job Safety Meeting	08/12/2011 02:00							WITH ALL ON LOCATION PERSONNEL
Start Job	08/12/2011 02:26							RIG DID NOT CIRULATE PRIOR TO JOB NO CIRULATION DURING JOB
Pressure Test	08/12/2011 02:28							2911 PSI
Pump Spacer	08/12/2011 02:34		4	10			70.0	FRESH WATER
Pump Spacer	08/12/2011 02:37		4	50			90.0	SUPERFLUSH XLC
Pump Spacer	08/12/2011 02:48		4	10			70.0	FRESH WATER
Activity Description	Date/Time	Cht	Rate bbl/ min	Volume bbl		Pressure psig		Comments

Sold To #: 300721

Ship To #: 2867042

Quote #:

Sales Order #:

8337545

SUMMIT Version: 7.2.27

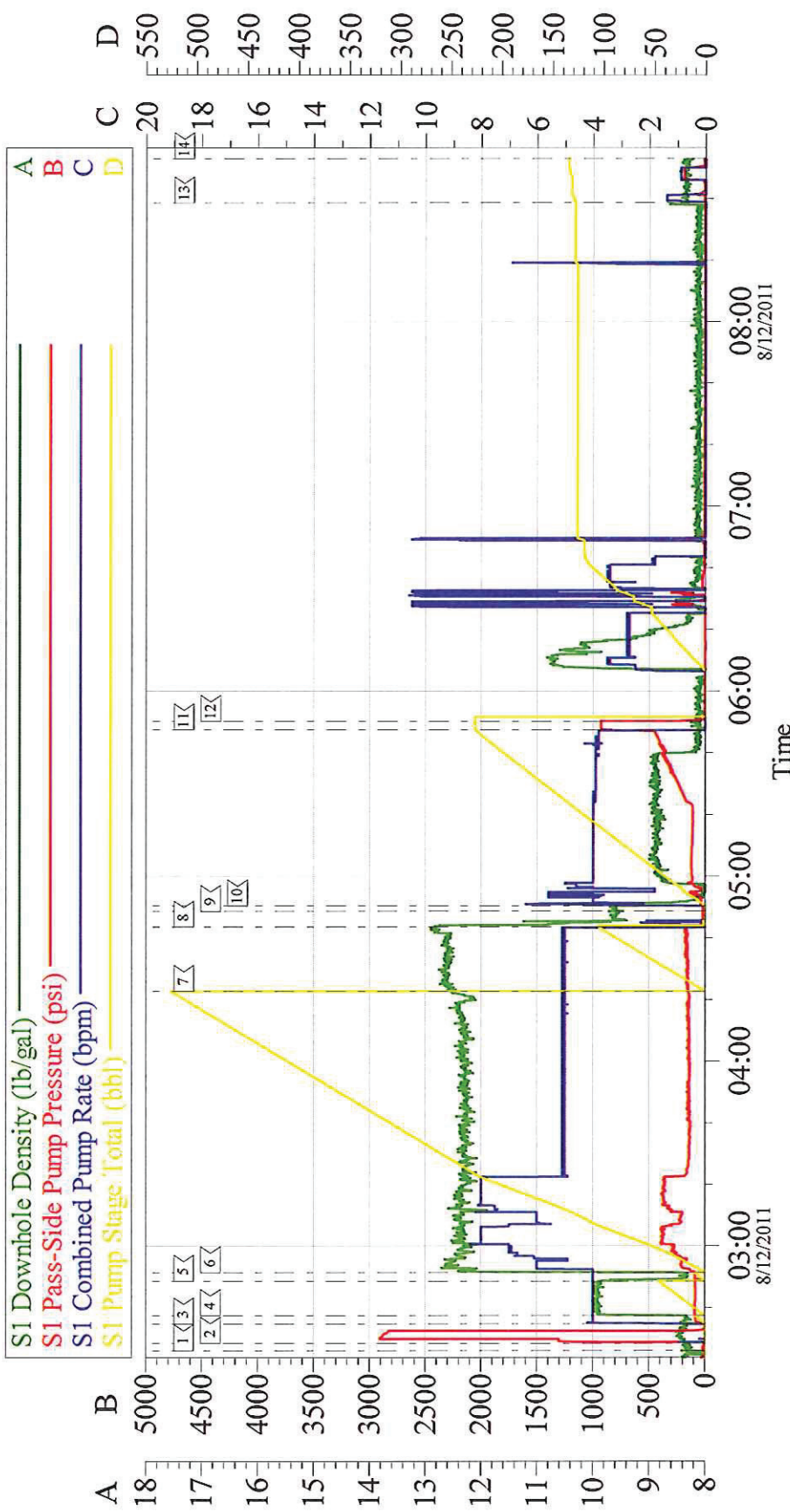
Saturday, August 13, 2011 11:06:00

Cementing Job Log

		#		Stage	Total	Tubing	Casing	
Pump Lead Cement	08/12/2011 02:51		8	480			360.0	1200 SKS, 12.3 PPG, 2.23FT3/SK, 12.21 GAL/SK
Pump Tail Cement	08/12/2011 04:22		5	93			160.0	250 SKS, 12.6 PPG, 2.07 FT3/SK, 11.04 GAL/SK
Shutdown	08/12/2011 04:43							
Drop Top Plug	08/12/2011 04:48							AWAY
Pump Displacement	08/12/2011 04:50		4	220			420.0	9.1 PPG MUD DISPLACEMENT
Bump Plug	08/12/2011 05:47		2	220			420.0	PLUG BUMPED
Check Floats	08/12/2011 05:50						930.0	FLOATS ARE HOLDING
Other	08/12/2011 08:38		0.4	10			210.0	PUMP PARISITE STRING WITH SUGAR WATER
End Job	08/12/2011 08:53							
Pre-Rig Down Safety Meeting	08/12/2011 09:00							WITH ALL HES PERSONNEL
Rig-Down Completed	08/12/2011 10:00							
Pre-Convoy Safety Meeting	08/12/2011 10:30							WITH ALL HES PERSONNEL
Comment	08/12/2011 10:30							THANKYOU FOR USING HALLIBURTON CEMENT, JAMES LEIST AND CREW

WILLIAMS PRODUCTION

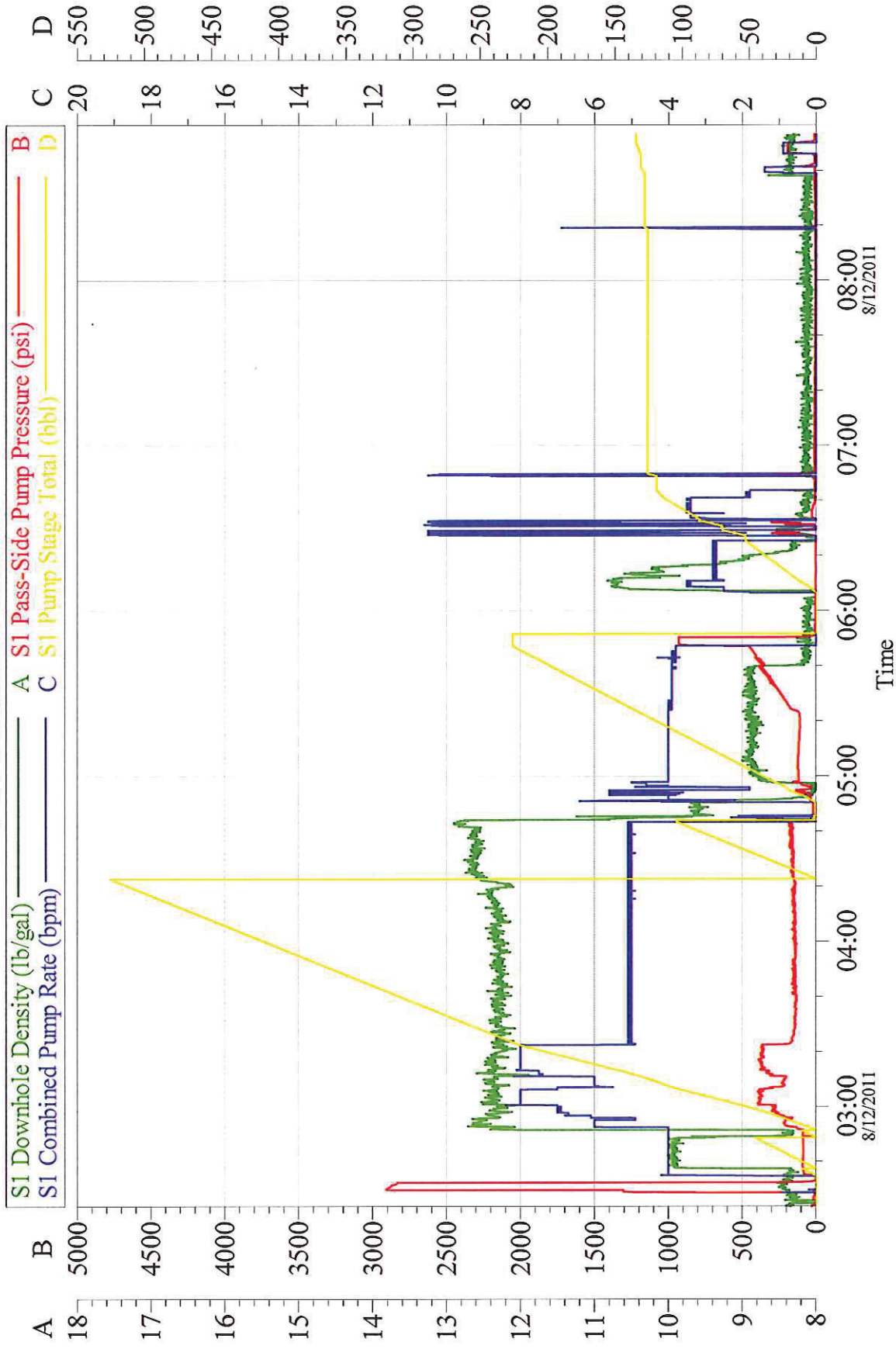
9 5/8 SURFACE CASING



Customer: WILLIAMS	Job Date: 12-Aug-2011	Sales Order #: 8337545
Well Description: TR-42-32-597	Job Type: SURFACE	ADC Used: YES
Company Rep: RICK OAKS	Cement Supervisor: JAMES LEIST	Elite #2: CHRIS SMITH

WILLIAMS PRODUCTION

9 5/8 SURFACE CASING



Customer: WILLIAMS	Job Date: 12-Aug-2011	Sales Order #: 8337545	OptiCem v6.4.9
Well Description: TR-42-32-597	Job Type: SURFACE	ADC Used: YES	12-Aug-11 08:56
Company Rep: RICK OAKS	Cement Supervisor: JAMES LEIST	Elite #2: CHRIS SMITH	