

HALLIBURTON

WILLIAMS PRODUCTION RMT INC - EBUS

TR 412-33-597
TRAIL RIDGE
Garfield County , Colorado

Cement Surface Casing
09-Aug-2011

Job Site Documents

The Road to Excellence Starts with Safety

Sold To #: 300721	Ship To #: 2870144	Quote #:	Sales Order #: 8371514
Customer: WILLIAMS PRODUCTION RMT INC - EBUS	Customer Rep: Geary, Scott		
Well Name: TR	Well #: 412-33-597	API/UWI #: 05-045-19488	
Field: TRAIL RIDGE	City (SAP): PARACHUTE	County/Parish: Garfield	State: Colorado
Lat: N 39.575 deg. OR N 39 deg. 34 min. 28.452 secs.	Long: W 108.294 deg. OR W -109 deg. 42 min. 23.285 secs.		
Contractor: H&P 278	Rig/Platform Name/Num: H&P 278		
Job Purpose: Cement Surface Casing			
Well Type: Development Well	Job Type: Cement Surface Casing		
Sales Person: KOHL, KYLE	Srv Supervisor: HUGENTOBLE, LOGAN	MBU ID Emp #: 447333	

Job Personnel

HES Emp Name	Exp Hrs	Emp #	HES Emp Name	Exp Hrs	Emp #	HES Emp Name	Exp Hrs	Emp #
COSTELDIA, BROCK James	20	476115	HAMMOND, DENNIS C	20	287025	HUGENTOBLE, LOGAN Mark	20	447333
SIMINEO, JEROD M	20	479954	THOMAS, STEPHEN Troy	20	490352			

Equipment

HES Unit #	Distance-1 way	HES Unit #	Distance-1 way	HES Unit #	Distance-1 way	HES Unit #	Distance-1 way
10886087	90 mile	10951247	90 mile	11164590	90 mile	11560046	90 mile
11562538	90 mile	11710582	90 mile				

Job Hours

Date	On Location Hours	Operating Hours	Date	On Location Hours	Operating Hours	Date	On Location Hours	Operating Hours
8/9/11	20	7						

TOTAL Total is the sum of each column separately

Job

Formation Name	Top	Bottom	Called Out	Date	Time	Time Zone
Formation Depth (MD)			On Location	08 - Aug - 2011	19:30	MST
Form Type	BHST	110 degF	Job Started	09 - Aug - 2011	04:00	MST
Job depth MD	2788. ft	Job Depth TVD	Job Completed	09 - Aug - 2011	13:17	MST
Water Depth		Wk Ht Above Floor	Job Completed	09 - Aug - 2011	20:12	MST
Perforation Depth (MD)	From	To	Departed Loc	09 - Aug - 2011	22:30	MST

Well Data

Description	New / Used	Max pressure psig	Size in	ID in	Weight lbm/ft	Thread	Grade	Top MD ft	Bottom MD ft	Top TVD ft	Bottom TVD ft
-------------	------------	-------------------	---------	-------	---------------	--------	-------	-----------	--------------	------------	---------------

Sales/Rental/3rd Party (HES)

Description	Qty	Qty uom	Depth	Supplier
PLUG,CMTG,TOP,9 5/8,HWE,8.16 MIN/9.06 MA	1	EA		

Tools and Accessories

Type	Size	Qty	Make	Depth	Type	Size	Qty	Make	Depth	Type	Size	Qty	Make
Guide Shoe					Packer					Top Plug	9.625	1	HES
Float Shoe					Bridge Plug					Bottom Plug			
Float Collar					Retainer					SSR plug set			
Insert Float										Plug Container	9.625	1	HES
Stage Tool										Centralizers			

Miscellaneous Materials

Gelling Agt	Conc	Surfactant	Conc	Acid Type	Qty	Conc	%
Treatment Fld	Conc	Inhibitor	Conc	Sand Type	Size	Qty	

Fluid Data

Stage/Plug #: 1	Fluid #	Stage Type	Fluid Name	Qty	Qty uom	Mixing Density lbm/gal	Yield ft3/sk	Mix Fluid Gal/sk	Rate bbl/min	Total Mix Fluid Gal/sk
-----------------	---------	------------	------------	-----	---------	------------------------	--------------	------------------	--------------	------------------------

1	Fresh Water		10.00	bbl	8.34	.0	.0	3.5	
2	SUPER FLUSH - XLC	SUPERFLUSH-XLC - SBM (549694)	50.00	bbl	11.	.0	.0	3.5	
3	Fresh Water		10.00	bbl	8.33	.0	.0	4	
4	ExtendaCem 303 + LCM	EXTENDACEM (TM) SYSTEM (452981)	1010.0	sacks	12.3	2.23	12.21	4	12.21
	12.21 Gal	FRESH WATER							
5	ExtendaCem 303 Tail	EXTENDACEM (TM) SYSTEM (452981)	250.0	sacks	12.6	2.07	11.04	3	11.04
	11.04 Gal	FRESH WATER							
6	Displacement		212.00	bbl	8.34	.0	.0	3	
Calculated Values		Pressures		Volumes					
Displacement	212	Shut In: Instant		Lost Returns		Cement Slurry	493	Pad	
Top Of Cement		5 Min		Cement Returns	0	Actual Displacement	212	Treatment	
Frac Gradient		15 Min		Spacers	70	Load and Breakdown		Total Job	
Rates									
Circulating		Mixing	3	Displacement	3	Avg. Job	3		
Cement Left In Pipe	Amount	0 ft	Reason	Shoe Joint					
Frac Ring # 1 @	ID	Frac ring # 2 @	ID	Frac Ring # 3 @	ID	Frac Ring # 4 @	ID		
The Information Stated Herein Is Correct				Customer Representative Signature					

The Road to Excellence Starts with Safety

Sold To #: 300721	Ship To #: 2870144	Quote #:	Sales Order #: 8371514
Customer: WILLIAMS PRODUCTION RMT INC - EBUS	Customer Rep: Geary, Scott		
Well Name: TR	Well #: 412-33-597	API/UWI #: 05-045-19488	
Field: TRAIL RIDGE	City (SAP): PARACHUTE	County/Parish: Garfield	State: Colorado
Legal Description:			
Lat: N 39.575 deg. OR N 39 deg. 34 min. 28.452 secs.		Long: W 108.294 deg. OR W -109 deg. 42 min. 23.285 secs.	
Contractor: H&P 278	Rig/Platform Name/Num: H&P 278		
Job Purpose: Cement Surface Casing	Ticket Amount:		
Well Type: Development Well	Job Type: Cement Surface Casing		
Sales Person: KOHL, KYLE	Srv Supervisor: HUGENTOBLE, LOGAN	MBU ID Emp #: 447333	

Activity Description	Date/Time	Cht #	Rate bbl/min	Volume bbl		Pressure psig		Comments
				Stage	Total	Tubing	Casing	
Call Out	08/08/2011 19:30							
Pre-Convoy Safety Meeting	08/08/2011 23:00							ALL HES EMPLOYEES
Arrive At Loc	08/09/2011 04:00							RIG STILL RUNNING CASING
Assessment Of Location Safety Meeting	08/09/2011 07:55							ALL HES EMPLOYEES
Rig-Up Equipment	08/09/2011 08:00							1 HT 400 PUMP TRUCK, 1 660 BULK TRUCK, 1 9.625 QUICK LATCH PLUG CONTAINER, 1 F450 P/U, 1 FIELD SILO, 1 COMPRESSOR TRAILER, 1 BAIL BASKET & SWAGE, 100' OF 4" SUCTION HOSE
Pre-Job Safety Meeting	08/09/2011 13:00							ALL HES EMPLOYEES, RIG CREW, CO REP.
Start Job	08/09/2011 13:17							TD 2786', TP 2788', FC 2743', HOLE 14.75", MUD WT 9.1 PPG, 800 BBLs OF H2O ON LOCATION, WATER SAMPLE SUBMITTED.
Pump Water	08/09/2011 13:20		2	2			18.0	FILL LINES
Pressure Test	08/09/2011 13:23							NO LEAKS
Pump Spacer 1	08/09/2011 13:34		3.5	10			51.0	FRESH WATER
Pump Spacer	08/09/2011 13:36		3.5	50			49.0	PUMP SUPERFLUSH SPACER

Cementing Job Log

Activity Description	Date/Time	Cht #	Rate bbl/min	Volume bbl		Pressure psig		Comments
				Stage	Total	Tubing	Casing	
Pump Water	08/09/2011 13:48		3	10			66.0	PUMP WATER
Pump Lead Cement	08/09/2011 13:57		4	401			141.0	1010 SKS EXTENDACEM CMT TO BE MIXED AT 12.3 PPG, 2.23 YIELD, 12.21 GAL/SK, CMT TO BE WEIGHED VIA PRESSURE BALANCED MUD SCALES. WET AND DRY SAMPLES SUBMITTED.
Pump Tail Cement	08/09/2011 16:00		3	92			92.0	250 SKS EXTENDACEM CCMT TO BE MIXED AT 12.6 PPG, 2.07 YIELD, 11.04 GAL/SK, CMT TO BE WEIGHED VIA PRESSURE BALANCED MUD SCALES. WET AND DRY SAMPLES SUBMITTED.
Shutdown	08/09/2011 16:33							FOR NO MORE THEN 5 MINUTES,
Drop Plug	08/09/2011 16:37							PLUG LAUNCH
Pump Displacement	08/09/2011 16:39		3	212			57.0	FRESH WATER, NO RETURNS THROUGH ENTIRE JOB NO CEMENT SURFACE
Slow Rate	08/09/2011 17:41		3				232.0	
Bump Plug	08/09/2011 17:51						857.0	PLUG LANDED HOLD FOR TWO MINUTES
Check Floats	08/09/2011 17:53							FLOATS HOLDING, NO ANNULAR FLOW
Pump Spacer	08/09/2011 20:01							PUMPED 10BBLs SUGAR WATER THROUGH PARASITE STRING
End Job	08/09/2011 20:12							THANK YOU FOR USING HES FROM LOGAN HUGENTOBLE AND CREW.
Post-Job Safety Meeting (Pre Rig-Down)	08/09/2011 20:15							ALL HES EMPLOYEES

Sold To #: 300721

Ship To #: 2870144

Quote #:

Sales Order #: 8371514

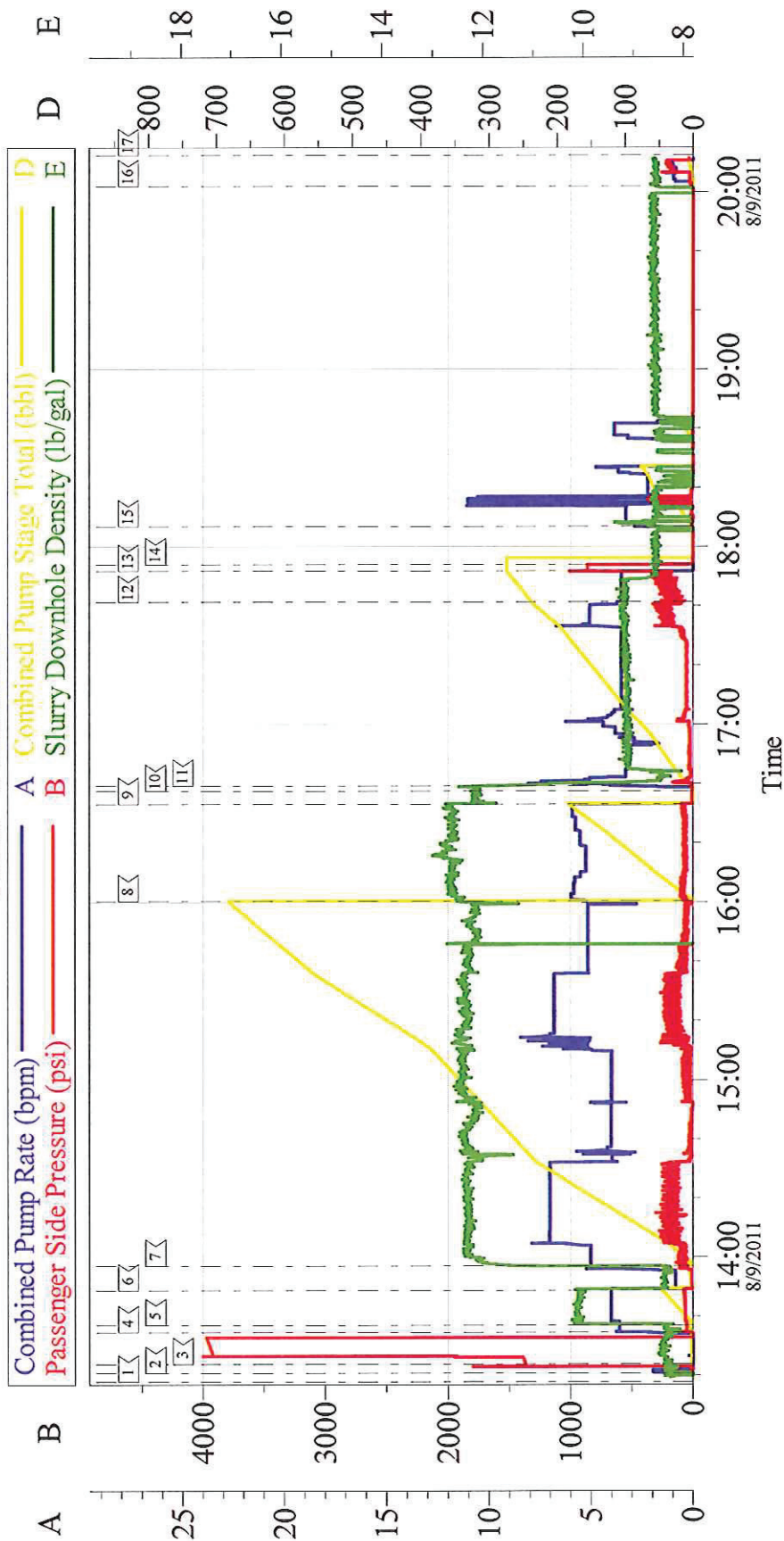
SUMMIT Version: 7.2.27

Saturday, August 13, 2011 11:02:00

Cementing Job Log

Activity Description	Date/Time	Cht #	Rate bbl/ min	Volume bbl		Pressure psig		Comments
				Stage	Total	Tubing	Casing	
Rig-Down Equipment	08/09/2011 20:20							SAFELY
Pre-Convoy Safety Meeting	08/09/2011 22:25							ALL HES EMPLOYEES
Crew Leave Location	08/09/2011 22:30							SITE WAS AS CLEAN AS WHEN WE ARRIVED

WILLIAMS

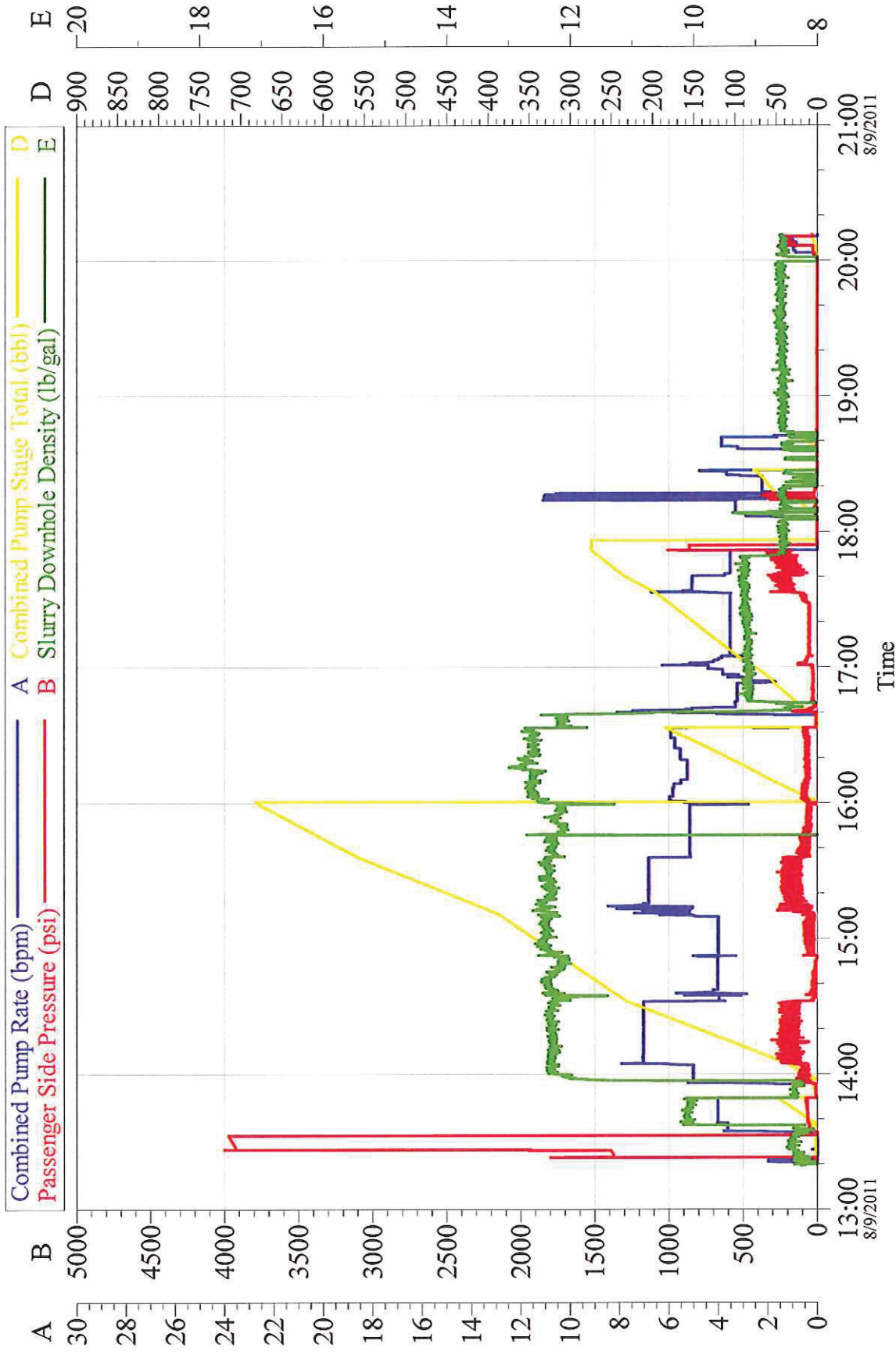


Local Event Log		
1	START JOB	13:17:50
2	PRIME LINES	13:20:46
3	PUMP H2O SPACER	13:23:49
4	PUMP H2O SPACER	13:34:35
5	PUMP SUPERFLUSH	13:36:58
6	PUMP H2O SPACER	13:48:45
7	PUMP LEAD CEMENT	13:57:01
8	PUMP TAIL CEMENT	16:00:18
9	SHUTDOWN	16:33:02
10	DROP PLUG	16:37:26
11	PUMP DISPLACEMENT	16:39:10
12	SLOW RATE	17:41:15
13	BUMP PLUG	17:51:44
14	CHECK FLOATS	17:53:56
15	WASH PUMP WHILE WAITING	18:06:48
16	PUMP SUGAR WATER PARASITE	20:01:58
17	END JOB	20:12:28

Customer:	Halliburton	Job Date:	09-Aug-2011	Sales Order #:	8371514
Well Description:	TR	Job Type:	SURFACE	ADC Used:	YES
Company Rep:	RICK OAKS	Cement Supervisor:	LOGAN HUGENTORFER	Elite # 5/ Operator:	BROCK CASTEL DIA

WILLIAMS

9.625" SURFACE



Customer: Halliburton	Job Date: 09-Aug-2011	Sales Order #: 8371514
Well Description: TR	Job Type: SURFACE	ADC Used: YES
Company Rep: RICK OAKS	Cement Supervisor: LOGAN HUGENTOBLE	Elite # 5/ Operator: BROCK CASTELDI/A