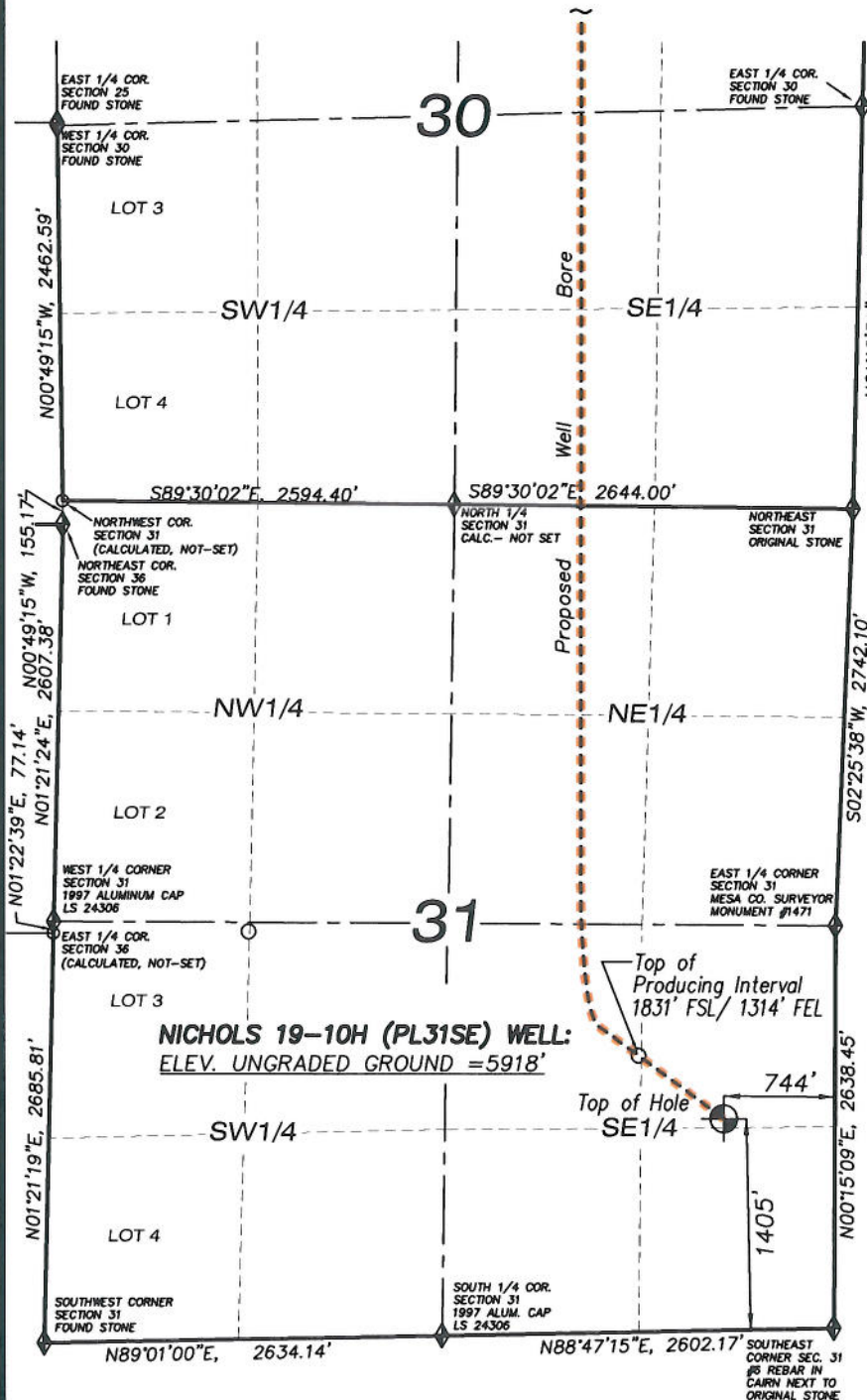


T9S, R95W, 6TH P.M.

SEE SHEET 1ee FOR CONTINUATION



LEGEND

- ◆ SECTION CORNER LOCATED
- ⊕ SURFACE LOCATION
- BOTTOM HOLE LOCATION
- RECORD LOCATION OF CORNER

CERTIFICATE OF SURVEYOR
I, TED TAGGART OF FRUITA, COLORADO HEREBY CERTIFY THAT THIS MAP WAS MADE FROM NOTES TAKEN DURING AN ACTUAL SURVEY MADE BY ME OR UNDER MY DIRECTION FOR ENCANA OIL & GAS (USA) INC. AND THAT THIS LOCATION HAS BEEN STAKED ON THE GROUND AS SHOWN HEREON.



NICHOLS 19-10H (PL31SE) WELL
(WELLHEAD LOCATION) NAD 83
LATITUDE = 39.228480° N
LONGITUDE = 108.028359° W
(BOTTOM HOLE LOCATION) NAD 83
LATITUDE = 39.260102° N
LONGITUDE = 108.031659° W

NOTES

1. WELL FOOTAGES ARE MEASURED AT RIGHT ANGLES TO SECTION LINES.
2. BASIS OF BEARING: GEODETIC- BASED ON GPS OBSERVATIONS.
3. ELEVATIONS BASED ON GPS OBSERVATIONS, NAVD 88 (GEOID 03), POST PROCESSED USING NGS OPUS.
4. SEE ADDENDUM TO LEGAL PLAT (SHEET 1g) FOR VISIBLE IMPROVEMENTS WITHIN 400 FEET OF THE PROPOSED OIL & GAS LOCATION.
5. CONTROL FOR SURVEY WAS ESTABLISHED USING DIFFERENTIALLY CORRECTED GPS FROM AN OPUS BASED CONTROL NETWORK. WELL LOCATION WAS ESTABLISHED USING NON-GPS CONVENTIONAL METHODS, THEREFORE NO PDOP READING WAS TAKEN.

MAP to ACCOMPANY

APPLICATION for PERMIT to DRILL
Encana Oil & Gas (USA) Inc.

Nichols 19-10H (PL31SE) Well

NE1/4 SE1/4, SECTION 31

T9S, R95W, 6th P.M.

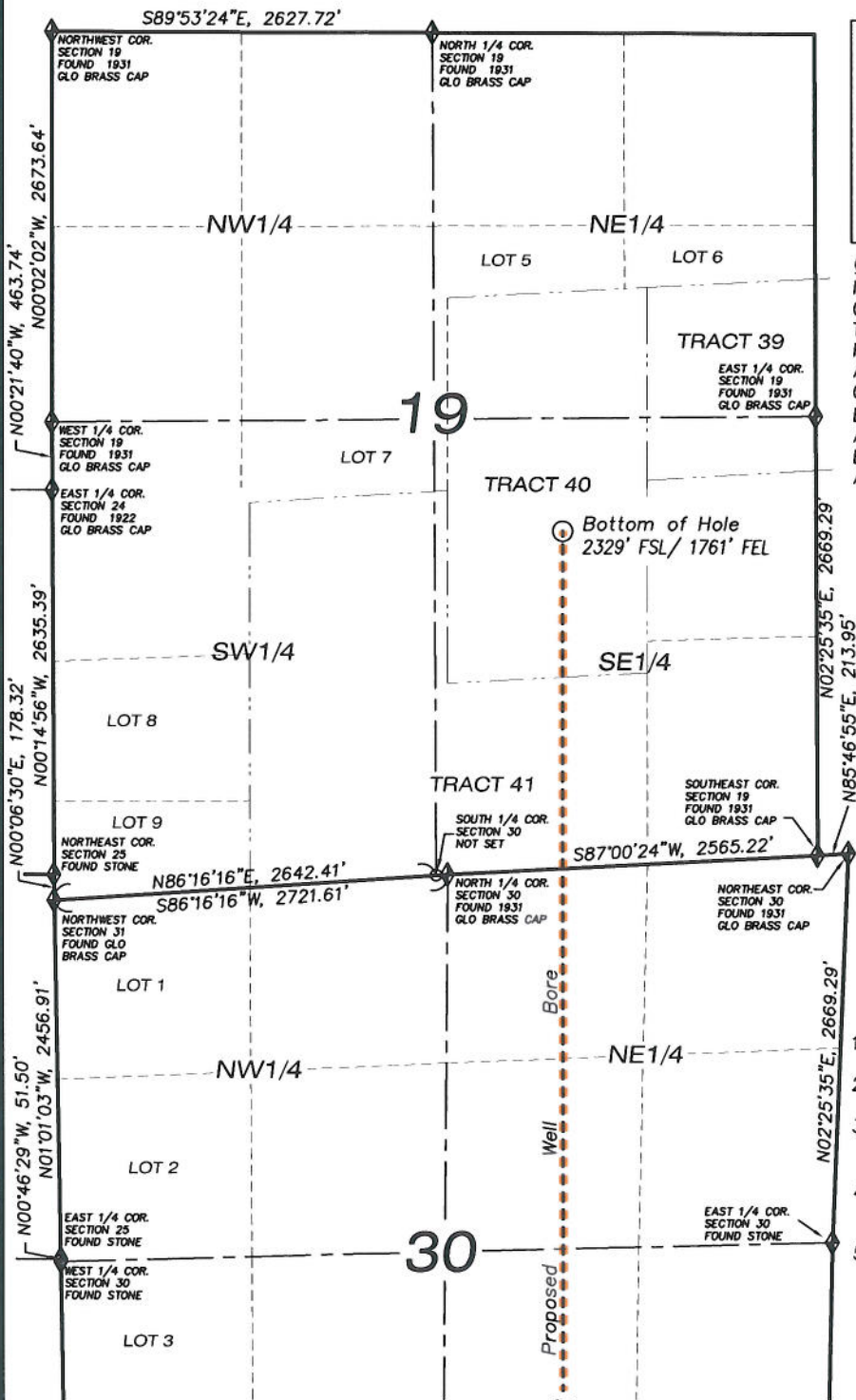
MESA COUNTY, COLORADO

| Location Plat | | Scale: 1" = 1200' | SHEET |
|----------------------|----------|--------------------------------|--------------------|
| Project No. | 07-04-45 | Date Surveyed: 9/05/07 | 1e OF 10 |
| Date Drawn: 10/04/11 | | Latest Revision Date: 11/17/11 | |



906 Main Street
Evanston, Wyoming 82930
Phone No. (307) 789-4545

T9S, R95W, 6TH P.M.



LEGEND

- ◆ SECTION CORNER LOCATED
- ⊕ SURFACE LOCATION
- BOTTOM HOLE LOCATION
- RECORD LOCATION OF CORNER

CERTIFICATE OF SURVEYOR
I, TED TAGGART OF FRUITA, COLORADO HEREBY CERTIFY THAT THIS MAP WAS MADE FROM NOTES TAKEN DURING AN ACTUAL SURVEY MADE BY ME OR UNDER MY DIRECTION FOR ENCANA OIL & GAS (USA) INC. AND THAT THIS LOCATION HAS BEEN STAKED ON THE GROUND AS SHOWN HEREON.



NICHOLS 19-10H (PL31SE) WELL
(WELLHEAD LOCATION) NAD 83
LATITUDE = 39.228480° N
LONGITUDE = 108.028359° W
(BOTTOM HOLE LOCATION) NAD 83
LATITUDE = 39.260102° N
LONGITUDE = 108.031659° W

NOTES

1. WELL FOOTAGES ARE MEASURED AT RIGHT ANGLES TO SECTION LINES.
2. BASIS OF BEARING: GEODETIC- BASED ON GPS OBSERVATIONS.
3. ELEVATIONS BASED ON GPS OBSERVATIONS, NAVD 88 (GEOID 03), POST PROCESSED USING NGS OPUS.
4. SEE ADDENDUM TO LEGAL PLAT (SHEET 1g) FOR VISIBLE IMPROVEMENTS WITHIN 400 FEET OF THE PROPOSED OIL & GAS LOCATION.
5. CONTROL FOR SURVEY WAS ESTABLISHED USING DIFFERENTIALLY CORRECTED GPS FROM AN OPUS BASED CONTROL NETWORK. WELL LOCATION WAS ESTABLISHED USING NON-GPS CONVENTIONAL METHODS, THEREFORE NO PDOP READING WAS TAKEN.

MAP to ACCOMPANY

APPLICATION for PERMIT to DRILL
Encana Oil & Gas (USA) Inc.
Nichols 19-10H (PL31SE) Well

NE1/4 SE1/4, SECTION 31
T9S, R95W, 6th P.M.
MESA COUNTY, COLORADO

-SEE SHEET 1e FOR CONTINUATION-



906 Main Street
Evanston, Wyoming 82930
Phone No. (307) 789-4545

| Location Plat | | Scale: 1" = 1200' | SHEET 1ee OF 10 |
|---------------|----------|--------------------------------|------------------------------|
| Project No. | 07-04-45 | Date Surveyed: 9/05/07 | |
| Date Drawn: | 10/04/11 | Latest Revision Date: 11/17/11 | |
| | | | |