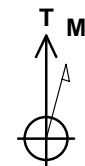
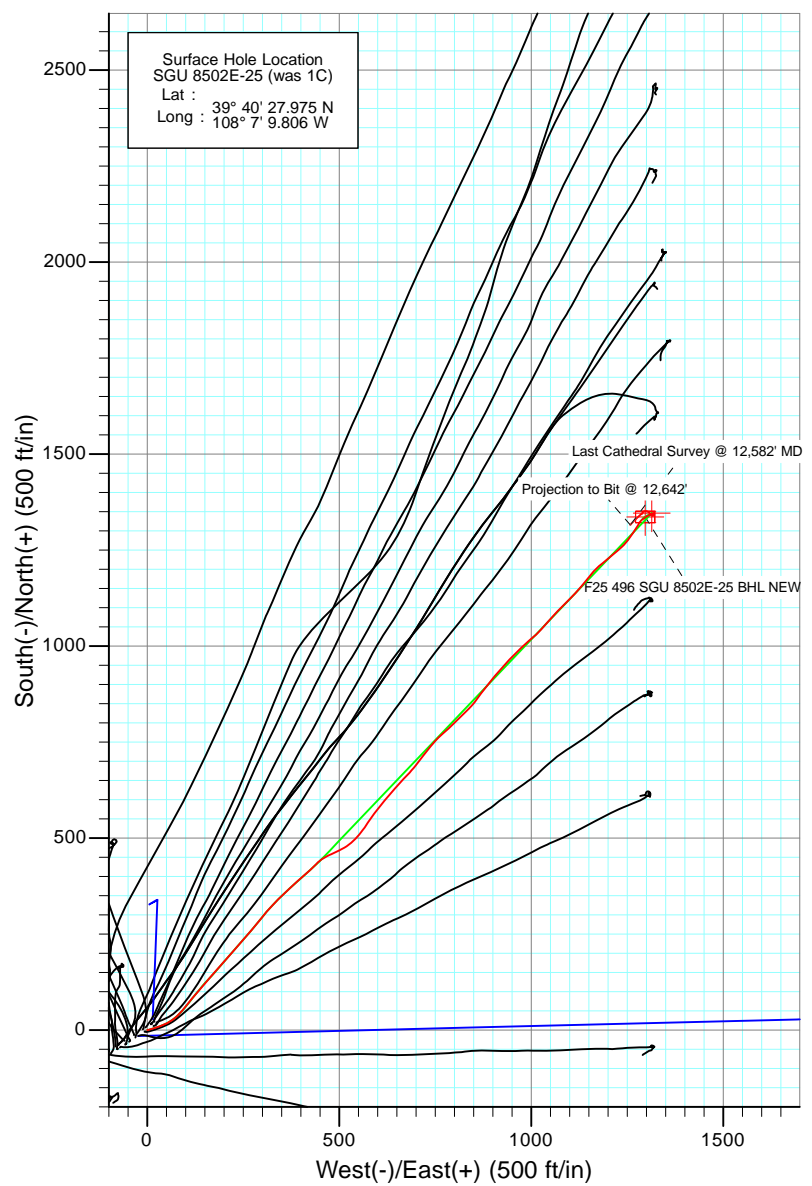
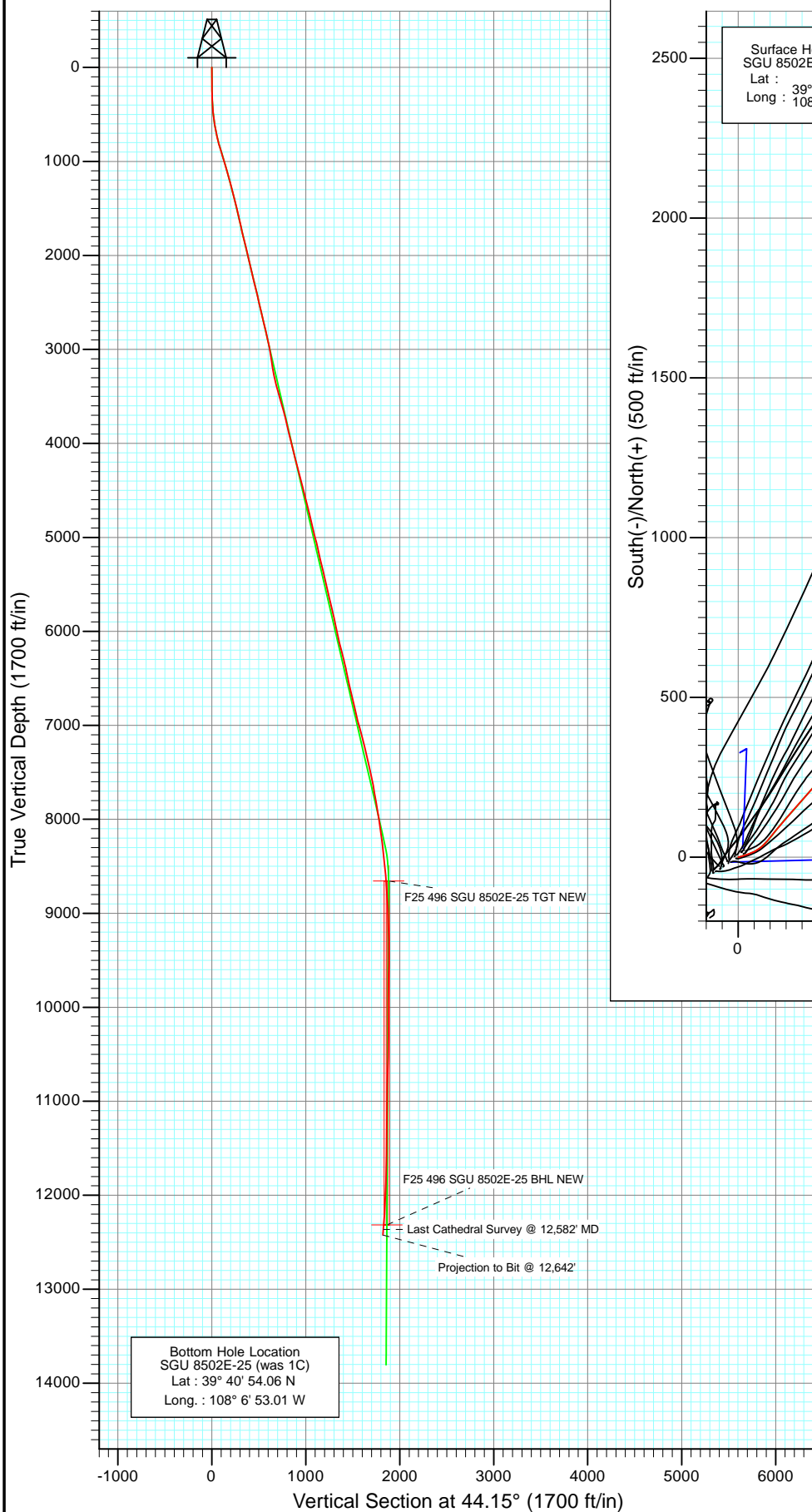




Project: Story Gulch
 Site: F25 496
 Well: SGU 8502E-25 (was 1C)
 Wellbore: DD
 Design: FINAL



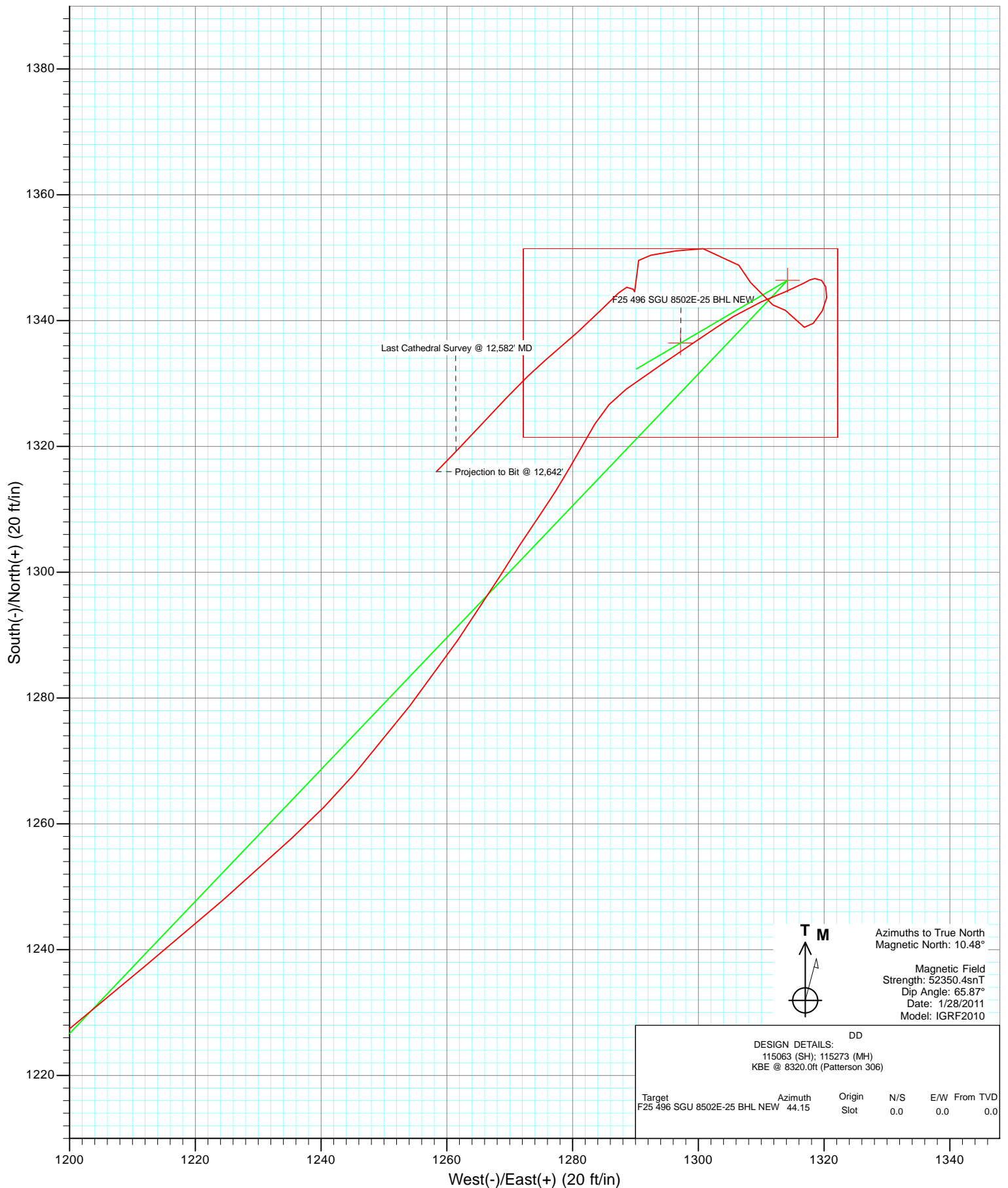
Azimuths to True North
 Magnetic North: 10.48°

Magnetic Field
 Strength: 52350.4snT
 Dip Angle: 65.87°
 Date: 1/28/2011
 Model: IGRF2010

DESIGN DETAILS: DD					
115063 (SH); 115273 (MH)					
KBE @ 8320.0ft (Patterson 306)					
Target	Azimuth	Origin	N/S	E/W	From TVD
F25 496 SGU 8502E-25 BHL NEW	44.15	Slot	0.0	0.0	0.0



Project: Story Gulch
Site: F25 496
Well: SGU 8502E-25 (was 1C)
Wellbore: DD
Design: FINAL



Cathedral Energy Services

Survey Report

Company:	EnCana Oil & Gas (USA) Inc	Local Co-ordinate Reference:	Well SGU 8502E-25 (was 1C)
Project:	Story Gulch	TVD Reference:	KBE @ 8320.0ft (Patterson 306)
Site:	F25 496	MD Reference:	KBE @ 8320.0ft (Patterson 306)
Well:	SGU 8502E-25 (was 1C)	North Reference:	True
Wellbore:	DD	Survey Calculation Method:	Minimum Curvature
Design:	DD	Database:	USA EDM 5000 Multi Users DB

Project	Story Gulch		
Map System:	US State Plane 1983	System Datum:	Mean Sea Level
Geo Datum:	North American Datum 1983		
Map Zone:	Colorado Central Zone		

Site		F25 496			
Site Position:		Northing:	1,681,091.06 ft	Latitude:	39° 40' 27.102 N
From:	Lat/Long	Easting:	2,262,632.54 ft	Longitude:	108° 7' 11.756 W
Position Uncertainty:	0.0 ft	Slot Radius:	13.200 in	Grid Convergence:	-1.65 °

Well	SGU 8502E-25 (was 1C)					
Well Position	+N/-S	0.0 ft	Northing:	1,681,174.90 ft	Latitude:	39° 40' 27.975 N
	+E/-W	0.0 ft	Easting:	2,262,787.46 ft	Longitude:	108° 7' 9.806 W
Position Uncertainty		0.0 ft	Wellhead Elevation:	ft	Ground Level:	8,298.0 ft

Wellbore	DD				
Magnetics	Model Name	Sample Date	Declination (°)	Dip Angle (°)	Field Strength (nT)
	IGRF2010	1/28/2011	10.48	65.87	52,350

Design	DD				
Audit Notes:					
Version:	1.0	Phase:	ACTUAL	Tie On Depth:	0.0
Vertical Section:	Depth From (TVD)	+N/-S	+E/-W	Direction	
	(ft)	(ft)	(ft)	(°)	
	0.0	0.0	0.0	44.15	

Survey Program	Date	7/14/2011			
From (ft)	To (ft)	Survey (Wellbore)	Tool Name	Description	
186.0	2,980.0	Survey #1 (DD)	MWD	Geolink MWD	
3,088.0	12,642.0	Survey #2 (DD)	MWD	Geolink MWD	

Survey										
Measured Depth (ft)	Inclination (°)	Azimuth (°)	Vertical Depth (ft)	+N/-S (ft)	+E/-W (ft)	Vertical Section (ft)	Dogleg Rate (°/100ft)	Build Rate (°/100ft)	Formations / Comments	
0.0	0.00	0.00	0.0	0.0	0.0	0.0	0.00	0.00		
186.0	0.40	71.40	186.0	0.2	0.6	0.6	0.22	0.22		
217.0	1.00	68.10	217.0	0.3	1.0	0.9	1.94	1.94		
248.0	1.20	83.40	248.0	0.5	1.5	1.4	1.14	0.65		
279.0	1.50	84.50	279.0	0.6	2.3	2.0	0.97	0.97		
309.0	2.00	72.00	309.0	0.8	3.2	2.7	2.09	1.67		
402.0	4.10	72.30	401.8	2.3	7.9	7.1	2.26	2.26		
494.0	6.80	76.30	493.4	4.6	16.3	14.6	2.96	2.93		
586.0	10.00	70.60	584.4	8.5	29.1	26.4	3.59	3.48		
679.0	12.20	65.90	675.7	15.2	45.7	42.7	2.56	2.37		
771.0	14.20	56.20	765.2	25.4	64.0	62.8	3.24	2.17		
866.0	16.40	44.10	856.9	41.6	83.0	87.6	4.07	2.32		

Cathedral Energy Services

Survey Report

Company:	EnCana Oil & Gas (USA) Inc	Local Co-ordinate Reference:	Well SGU 8502E-25 (was 1C)
Project:	Story Gulch	TVD Reference:	KBE @ 8320.0ft (Patterson 306)
Site:	F25 496	MD Reference:	KBE @ 8320.0ft (Patterson 306)
Well:	SGU 8502E-25 (was 1C)	North Reference:	True
Wellbore:	DD	Survey Calculation Method:	Minimum Curvature
Design:	DD	Database:	USA EDM 5000 Multi Users DB

Survey

Measured Depth (ft)	Inclination (°)	Azimuth (°)	Vertical Depth (ft)	+N/-S (ft)	+E/-W (ft)	Vertical Section (ft)	Dogleg Rate (°/100ft)	Build Rate (°/100ft)	Formations / Comments
961.0	16.90	39.70	947.9	61.8	101.1	114.8	1.43	0.53	
1,056.0	16.60	38.80	1,038.9	83.0	118.5	142.1	0.42	-0.32	
1,152.0	16.10	37.80	1,131.0	104.2	135.2	169.0	0.60	-0.52	
1,247.0	15.30	43.00	1,222.5	123.8	151.8	194.6	1.70	-0.84	
1,342.0	14.70	43.30	1,314.2	141.7	168.7	219.2	0.64	-0.63	
1,434.0	13.90	41.20	1,403.4	158.6	183.9	241.9	1.04	-0.87	
1,532.0	13.80	40.70	1,498.5	176.3	199.3	265.3	0.16	-0.10	
1,627.0	12.80	39.80	1,591.0	192.9	213.4	287.1	1.07	-1.05	
1,721.0	12.10	40.60	1,682.8	208.4	226.5	307.3	0.77	-0.74	
1,816.0	14.20	41.70	1,775.3	224.7	240.8	328.9	2.23	2.21	
1,912.0	13.60	42.10	1,868.5	241.9	256.2	352.0	0.63	-0.62	
2,007.0	13.40	39.60	1,960.8	258.6	270.7	374.1	0.65	-0.21	
2,102.0	12.70	38.80	2,053.4	275.2	284.2	395.5	0.76	-0.74	
2,197.0	13.40	39.70	2,145.9	291.9	297.8	416.8	0.77	0.74	
2,292.0	13.40	40.20	2,238.3	308.7	311.9	438.8	0.12	0.00	
2,387.0	13.70	43.80	2,330.7	325.3	326.8	461.0	0.94	0.32	
2,482.0	13.20	45.00	2,423.1	341.0	342.3	483.1	0.60	-0.53	
2,577.0	13.00	47.00	2,515.6	356.0	357.8	504.6	0.52	-0.21	
2,672.0	13.60	46.30	2,608.1	371.0	373.7	526.5	0.65	0.63	
2,768.0	13.80	47.80	2,701.3	386.5	390.3	549.2	0.42	0.21	
2,866.0	12.90	48.50	2,796.7	401.6	407.1	571.7	0.93	-0.92	
2,980.0	12.30	48.30	2,907.9	418.1	425.7	596.5	0.53	-0.53	
3,088.0	10.30	42.80	3,013.8	432.8	440.9	617.7	2.10	-1.85	
3,179.0	8.20	52.70	3,103.7	442.8	451.6	632.2	2.89	-2.31	
3,271.0	9.80	61.30	3,194.5	450.5	463.7	646.2	2.27	1.74	
3,362.0	12.70	65.60	3,283.8	458.3	479.6	662.9	3.32	3.19	
3,454.0	15.30	64.70	3,373.0	467.7	499.8	683.7	2.84	2.83	
3,545.0	15.70	55.00	3,460.7	479.9	520.7	707.0	2.88	0.44	
3,728.0	16.40	37.60	3,636.7	514.6	556.8	757.0	2.65	0.38	
3,820.0	13.90	34.60	3,725.5	534.0	571.0	780.8	2.85	-2.72	
3,911.0	14.10	33.30	3,813.8	552.2	583.3	802.5	0.41	0.22	
4,002.0	13.30	38.60	3,902.2	569.7	595.9	823.8	1.63	-0.88	
4,094.0	12.40	38.80	3,991.9	585.7	608.7	844.2	0.98	-0.98	
4,185.0	15.10	39.00	4,080.3	602.5	622.3	865.7	2.97	2.97	
4,277.0	15.00	40.90	4,169.1	620.8	637.6	889.5	0.55	-0.11	
4,368.0	13.80	42.00	4,257.3	637.8	652.6	912.2	1.35	-1.32	
4,460.0	14.70	43.00	4,346.4	654.5	667.9	934.8	1.01	0.98	
4,551.0	14.40	44.40	4,434.5	671.0	683.7	957.6	0.51	-0.33	
4,643.0	15.60	37.50	4,523.4	689.0	699.2	981.4	2.34	1.30	
4,734.0	13.80	36.50	4,611.4	707.4	713.1	1,004.3	2.00	-1.98	
4,825.0	14.20	38.90	4,699.7	724.8	726.6	1,026.2	0.77	0.44	
4,917.0	13.20	40.20	4,789.1	741.6	740.4	1,047.9	1.14	-1.09	
5,008.0	12.80	43.70	4,877.8	756.8	754.1	1,068.3	0.97	-0.44	
5,099.0	14.60	47.50	4,966.2	771.9	769.5	1,089.9	2.21	1.98	
5,191.0	13.40	49.90	5,055.4	786.6	786.2	1,112.0	1.45	-1.30	
5,282.0	13.80	43.70	5,143.9	801.2	801.8	1,133.4	1.66	0.44	
5,374.0	12.70	44.80	5,233.4	816.3	816.5	1,154.5	1.23	-1.20	
5,465.0	13.40	46.10	5,322.1	830.7	831.2	1,175.0	0.83	0.77	
5,557.0	13.20	41.80	5,411.6	846.0	845.8	1,196.2	1.10	-0.22	
5,647.0	13.30	36.10	5,499.2	862.0	858.8	1,216.7	1.46	0.11	
5,739.0	12.80	35.10	5,588.8	878.9	870.9	1,237.2	0.60	-0.54	
5,830.0	14.20	39.20	5,677.3	895.8	883.7	1,258.3	1.86	1.54	
5,921.0	13.50	40.60	5,765.7	912.5	897.7	1,280.0	0.85	-0.77	

Cathedral Energy Services

Survey Report

Company:	EnCana Oil & Gas (USA) Inc	Local Co-ordinate Reference:	Well SGU 8502E-25 (was 1C)
Project:	Story Gulch	TVD Reference:	KBE @ 8320.0ft (Patterson 306)
Site:	F25 496	MD Reference:	KBE @ 8320.0ft (Patterson 306)
Well:	SGU 8502E-25 (was 1C)	North Reference:	True
Wellbore:	DD	Survey Calculation Method:	Minimum Curvature
Design:	DD	Database:	USA EDM 5000 Multi Users DB

Survey									
Measured Depth (ft)	Inclination (°)	Azimuth (°)	Vertical Depth (ft)	+N/-S (ft)	+E/-W (ft)	Vertical Section (ft)	Dogleg Rate (°/100ft)	Build Rate (°/100ft)	Formations / Comments
6,013.0	12.10	41.60	5,855.4	927.9	911.1	1,300.4	1.54	-1.52	
6,104.0	11.20	37.60	5,944.5	942.0	922.8	1,318.7	1.33	-0.99	
6,196.0	12.00	44.10	6,034.7	955.9	934.9	1,337.1	1.66	0.87	
6,287.0	15.00	43.40	6,123.1	971.3	949.6	1,358.4	3.30	3.30	
6,379.0	13.70	45.80	6,212.3	987.5	965.6	1,381.2	1.55	-1.41	
6,471.0	14.30	48.00	6,301.5	1,002.7	981.8	1,403.4	0.87	0.65	
6,562.0	13.10	49.50	6,389.9	1,017.0	998.0	1,424.9	1.38	-1.32	
6,654.0	11.30	46.60	6,479.9	1,029.9	1,012.5	1,444.3	2.07	-1.96	
6,745.0	11.90	43.30	6,569.0	1,042.9	1,025.4	1,462.5	0.98	0.66	
6,837.0	13.20	41.70	6,658.8	1,057.6	1,038.9	1,482.5	1.46	1.41	
6,928.0	14.00	40.70	6,747.2	1,073.7	1,053.0	1,503.9	0.92	0.88	
7,020.0	13.30	43.50	6,836.6	1,089.8	1,067.6	1,525.6	1.05	-0.76	
7,111.0	13.50	46.30	6,925.2	1,104.8	1,082.4	1,546.7	0.75	0.22	
7,203.0	15.60	44.10	7,014.2	1,121.1	1,098.8	1,569.8	2.36	2.28	
7,294.0	15.00	43.20	7,102.0	1,138.4	1,115.4	1,593.8	0.71	-0.66	
7,386.0	14.00	40.30	7,191.1	1,155.6	1,130.7	1,616.8	1.34	-1.09	
7,477.0	13.60	39.00	7,279.4	1,172.3	1,144.6	1,638.4	0.56	-0.44	
7,568.0	13.00	38.40	7,368.0	1,188.7	1,157.7	1,659.3	0.68	-0.66	
7,659.0	12.50	48.00	7,456.8	1,203.3	1,171.4	1,679.3	2.39	-0.55	
7,750.0	11.50	50.70	7,545.8	1,215.6	1,185.7	1,698.1	1.26	-1.10	
7,842.0	10.80	50.00	7,636.0	1,227.0	1,199.4	1,715.8	0.77	-0.76	
7,933.0	10.20	50.90	7,725.5	1,237.5	1,212.2	1,732.3	0.68	-0.66	
8,025.0	9.80	48.50	7,816.1	1,247.8	1,224.4	1,748.2	0.63	-0.43	
8,116.0	8.90	47.60	7,905.9	1,257.7	1,235.4	1,762.9	1.00	-0.99	
8,207.0	9.10	40.90	7,995.8	1,267.9	1,245.3	1,777.1	1.17	0.22	
8,299.0	8.40	37.30	8,086.7	1,278.8	1,254.1	1,791.1	0.97	-0.76	
8,390.0	7.80	35.00	8,176.8	1,289.1	1,261.7	1,803.8	0.75	-0.66	
8,482.0	7.60	31.80	8,268.0	1,299.4	1,268.5	1,815.9	0.51	-0.22	
8,573.0	6.60	34.60	8,358.3	1,308.8	1,274.6	1,826.9	1.16	-1.10	
8,665.0	5.10	29.20	8,449.8	1,316.7	1,279.6	1,836.1	1.73	-1.63	
8,756.0	4.90	30.80	8,540.4	1,323.6	1,283.6	1,843.8	0.27	-0.22	
8,848.0	4.50	54.10	8,632.1	1,329.1	1,288.5	1,851.1	2.10	-0.43	
8,940.0	4.40	56.30	8,723.9	1,333.2	1,294.4	1,858.1	0.22	-0.11	
9,031.0	4.60	55.60	8,814.6	1,337.2	1,300.3	1,865.1	0.23	0.22	
9,122.0	3.40	58.20	8,905.4	1,340.6	1,305.6	1,871.3	1.33	-1.32	
9,214.0	2.90	66.40	8,997.2	1,343.0	1,310.0	1,876.1	0.73	-0.54	
9,305.0	2.20	69.70	9,088.1	1,344.5	1,313.8	1,879.8	0.79	-0.77	
9,397.0	1.80	58.80	9,180.1	1,345.9	1,316.7	1,882.8	0.60	-0.43	
9,488.0	0.80	85.00	9,271.0	1,346.7	1,318.5	1,884.7	1.25	-1.10	
9,580.0	0.70	129.40	9,363.0	1,346.4	1,319.6	1,885.2	0.62	-0.11	
9,671.0	0.90	160.60	9,454.0	1,345.4	1,320.3	1,885.0	0.52	0.22	
9,763.0	1.30	186.20	9,546.0	1,343.7	1,320.4	1,883.8	0.68	0.43	
9,854.0	1.50	208.60	9,637.0	1,341.6	1,319.7	1,881.8	0.64	0.22	
9,946.0	1.60	222.10	9,729.0	1,339.6	1,318.3	1,879.4	0.41	0.11	
10,038.0	0.80	299.80	9,820.9	1,338.9	1,316.9	1,878.0	1.77	-0.87	
10,129.0	1.40	318.80	9,911.9	1,340.1	1,315.6	1,877.9	0.76	0.66	
10,221.0	1.50	304.90	10,003.9	1,341.6	1,313.9	1,877.8	0.40	0.11	
10,312.0	1.30	280.50	10,094.9	1,342.5	1,311.9	1,877.0	0.68	-0.22	
10,495.0	2.20	334.50	10,277.8	1,346.0	1,308.3	1,877.1	0.97	0.49	
10,587.0	2.00	316.60	10,369.7	1,348.8	1,306.4	1,877.8	0.74	-0.22	
10,770.0	2.20	275.10	10,552.6	1,351.4	1,300.8	1,875.7	0.82	0.11	
10,862.0	3.20	258.80	10,644.5	1,351.1	1,296.5	1,872.5	1.36	1.09	
10,953.0	1.90	262.90	10,735.4	1,350.4	1,292.5	1,869.2	1.44	-1.43	

Cathedral Energy Services

Survey Report

Company:	EnCana Oil & Gas (USA) Inc	Local Co-ordinate Reference:	Well SGU 8502E-25 (was 1C)
Project:	Story Gulch	TVD Reference:	KBE @ 8320.0ft (Patterson 306)
Site:	F25 496	MD Reference:	KBE @ 8320.0ft (Patterson 306)
Well:	SGU 8502E-25 (was 1C)	North Reference:	True
Wellbore:	DD	Survey Calculation Method:	Minimum Curvature
Design:	DD	Database:	USA EDM 5000 Multi Users DB

Survey

Measured Depth (ft)	Inclination (°)	Azimuth (°)	Vertical Depth (ft)	+N/-S (ft)	+E/-W (ft)	Vertical Section (ft)	Dogleg Rate (°/100ft)	Build Rate (°/100ft)	Formations / Comments
11,045.0	1.00	215.90	10,827.4	1,349.6	1,290.5	1,867.2	1.54	-0.98	
11,136.0	1.80	171.40	10,918.4	1,347.5	1,290.3	1,865.6	1.42	0.88	
11,319.0	0.50	263.30	11,101.3	1,344.6	1,289.9	1,863.2	1.03	-0.71	
11,411.0	0.60	17.10	11,193.3	1,345.0	1,289.6	1,863.3	1.00	0.11	
11,594.0	0.90	245.60	11,376.3	1,345.3	1,288.6	1,862.9	0.75	0.16	
11,685.0	1.10	226.00	11,467.3	1,344.4	1,287.3	1,861.3	0.43	0.22	
11,868.0	1.30	224.80	11,650.3	1,341.7	1,284.6	1,857.5	0.11	0.11	
12,052.0	1.90	228.10	11,834.2	1,338.2	1,280.9	1,852.4	0.33	0.33	
12,235.0	2.30	229.80	12,017.1	1,333.8	1,275.8	1,845.7	0.22	0.22	
12,326.0	2.60	226.10	12,108.0	1,331.2	1,272.9	1,841.8	0.37	0.33	
12,418.0	3.60	223.40	12,199.9	1,327.7	1,269.4	1,836.8	1.10	1.09	
12,509.0	4.20	222.90	12,290.6	1,323.1	1,265.2	1,830.6	0.66	0.66	
12,582.0	4.30	224.10	12,363.5	1,319.2	1,261.5	1,825.2	0.18	0.14	Last Cathedral Survey @ 12,582' MD
12,642.0	4.30	224.10	12,423.3	1,316.0	1,258.3	1,820.7	0.00	0.00	Projection to Bit @ 12,642'

Targets

Target Name	Dip Angle (°)	Dip Dir. (°)	TVD (ft)	+N/-S (ft)	+E/-W (ft)	Northing (ft)	Easting (ft)	Latitude	Longitude
- hit/miss target									
- Shape									
F25 496 SGU 8502E-25	0.00	0.00	12,315.0	1,336.4	1,297.2	1,682,473.38	2,264,122.63	39° 40' 41.182 N	108° 6' 53.215 W
- actual wellpath misses target center by 36.2ft at 12530.9ft MD (12312.5 TVD, 1322.0 N, 1264.1 E)									
- Rectangle (sides W30.0 H50.0 D0.0)									
F25 496 SGU 8502E-25	0.00	0.00	8,655.0	1,346.4	1,314.2	1,682,482.85	2,264,139.93	39° 40' 41.281 N	108° 6' 52.998 W
- actual wellpath misses target center by 29.1ft at 8873.2ft MD (8657.3 TVD, 1330.2 N, 1290.1 E)									
- Point									

Design Annotations

Measured Depth (ft)	Vertical Depth (ft)	Local Coordinates	Comment
		+N/-S (ft)	+E/-W (ft)
12,582.0	12,363.5	1,319.2	1,261.5
12,642.0	12,423.3	1,316.0	1,258.3
			Last Cathedral Survey @ 12,582' MD
			Projection to Bit @ 12,642'

Checked By: _____ Approved By: _____ Date: _____