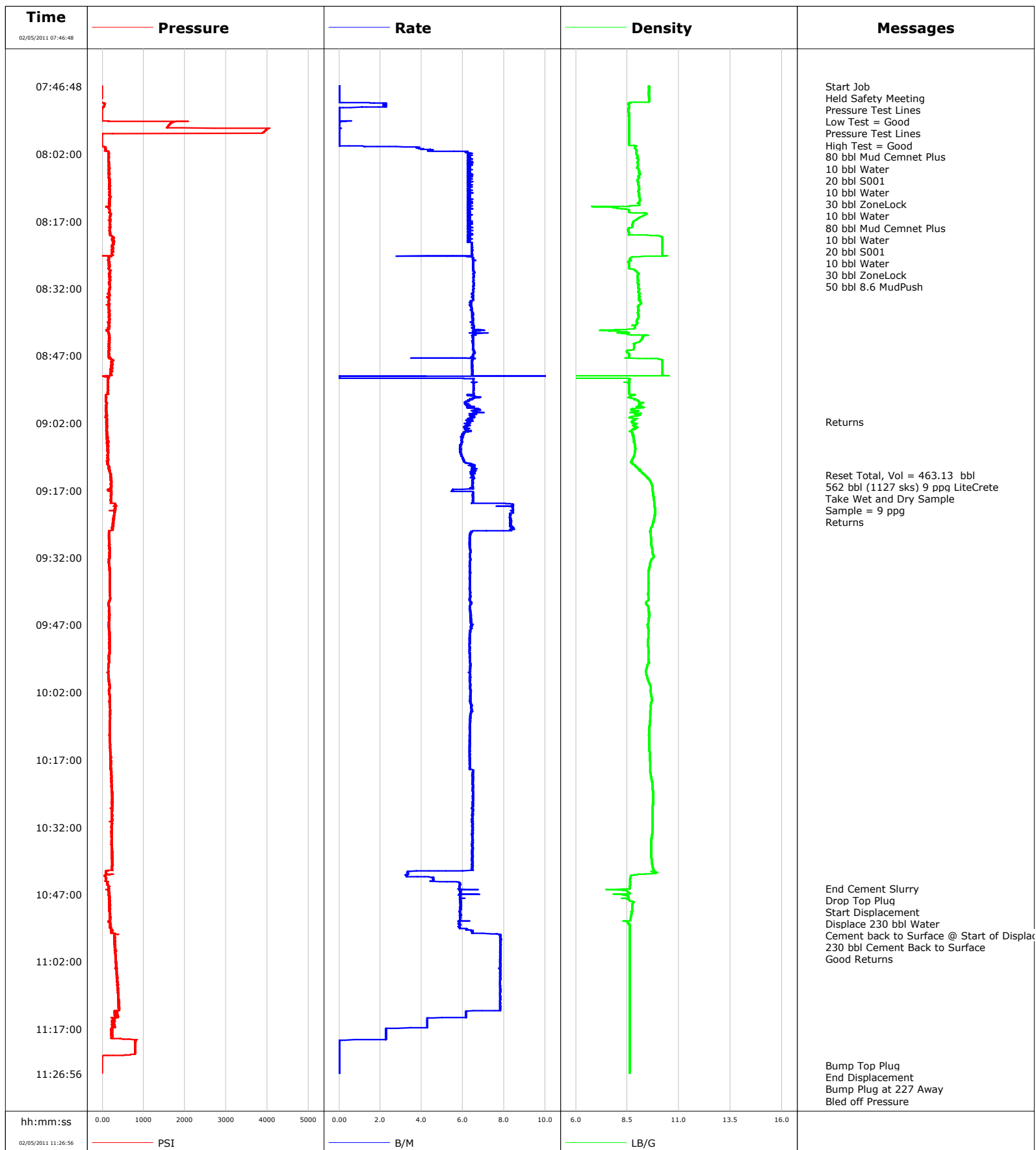


Well SGU 8502E-25 F25 496
Field N Parachute
Engineer Tom Leduc
Country United States

Client Encana
SIR No.
Job Type 9 5/8 Surface
Job Date 02-05-2011





Cementing Service Report

				Customer Encana		Job Number BJ90-00148			
Well SGU 8502E-25 F25 496 SGU 8502E-25 F25 496			Location (legal) N Parachute		Schlumberger Location Grand Junction		Job Start Feb/05/2011		
Field N Parachute		Formation Name/Type Shale		Deviation 0 deg	Bit Size 14.8 in	Well MD 3025.0 ft		Well TVD 3025.0 ft	
County Garfield		State/Province Colorado		BHP	BHST 115 degF	BHCT 95 degF	Pore Press. Gradient		
Well Master 0631238403		API/UWI							
Rig Name Patterson 306	Drilled For Gas	Service Via Land	Casing/Liner						
			Depth, ft	Size, in	Weight, lb/ft	Grade	Thread		
Offshore Zone	Well Class New	Well Type Development	3025.0	9.630	36.0	J55	8RD		
			0.0	0.000	0.0				
Drilling Fluid Type Bentonite		Max. Density 8.40 lb/gal	Plastic Viscosity 10.000 cP	Tubing/Drill Pipe					
				Depth,	Size,	Weight,	Grade	Thread	
Service Line Cementing	Job Type 9 5/8 Surface								
Max. Allowed Tub. Press 3000 psi	Max. Allowed Ann. Press 800 psi	WH Connection Single Cement head	Perforations/Open Hole						
Service Instructions 9 5/8 Surface			Top,	Bottom,			No. of Shots	Total Interval	
								Diameter	
			Treat Down Casing	Displacement 230.0 bbl		Packer Type		Packer Depth	
			Tubing Vol.	Casing Vol. 231.0 bbl		Annular Vol. 384.0 bbl		Openhole Vol. 635.0 bbl	
Casing/Tubing Secured <input checked="" type="checkbox"/>		1 Hole Vol. Circulated prior to Cement <input checked="" type="checkbox"/>		Casing Tools			Squeeze Job		
Lift Pressure 1497 psi			Shoe Type Float			Squeeze Type			
Pipe Rotated <input type="checkbox"/>		Pipe Reciprocated <input type="checkbox"/>		Shoe Depth 3022.0 ft			Tool Type		
No. Centralizers		Top Plugs	Bottom Plugs	Stage Tool Type			Tool Depth		
Cement Head Type Single				Stage Tool Depth			Tail Pipe Size		
Job Scheduled For Feb/05/2011 05:00		Arrived on Location Feb/05/2011 05:00	Leave Location Feb/05/2011 13:00	Collar Type Float			Tail Pipe Depth		
				Collar Depth 2976.0 ft			Sqz. Total Vol.		
Date	Time 24-hr clock	Treating Pressure PSI	Flow Rate B/M	Density LB/G	Volume BBL	Message			
02/05/2011	07:12:58					Pump 9 5/8 Surface @ 3025'			
02/05/2011	07:13:02					80 bbl Mud Cemnet Plus			
02/05/2011	07:13:03					10 bbl Water			
02/05/2011	07:13:03					20 bbl S001			
02/05/2011	07:13:03					10 bbl Water			
02/05/2011	07:13:03					30 bbl ZoneLock			
02/05/2011	07:13:03					10 bbl Water			
02/05/2011	07:13:03					80 bbl Mud Cemnet Plus			
02/05/2011	07:13:04					10 bbl Water			
02/05/2011	07:13:04					20 bbl S001			
02/05/2011	07:13:04					10 bbl Water			
02/05/2011	07:13:04					30 bbl ZoneLock			
02/05/2011	07:13:04					10 bbl Water			
02/05/2011	07:14:48					50 bbl 8.6 MudPush			
02/05/2011	07:14:48					562 bbl (1127 sks) 9 ppg LiteCrete			
02/05/2011	07:14:48					Displace 230 bbl Water			
02/05/2011	07:46:48	-17	0.0	9.55	0.0				
02/05/2011	07:46:49					Start Job			
02/05/2011	07:46:49	-17	0.0	9.55	0.0				
02/05/2011	07:46:50					Held Safety Meeting			
02/05/2011	07:46:50	-17	0.0	9.55	0.0				

Well			Field		Job Start		Customer		Job Number	
SGU 8502E-25 F25 496 SGU 8502E-25 F25 496			N Parachute		Feb/05/2011		Encana		BJ90-00148	
Date	Time 24-hr clock	Treating Pressure PSI	Flow Rate B/M	Density LB/G	Volume BBL	Message				
02/05/2011	07:46:51	-17	0.0	9.55	0.0					
02/05/2011	07:46:53					Low Test = Good				
02/05/2011	07:46:53	-17	0.0	9.55	0.0					
02/05/2011	07:46:54					Pressure Test Lines				
02/05/2011	07:46:54	-17	0.0	9.55	0.0					
02/05/2011	07:46:56					High Test = Good				
02/05/2011	07:46:56	-17	0.0	9.55	0.0					
02/05/2011	07:46:57					80 bbl Mud Cemnet Plus				
02/05/2011	07:46:57					10 bbl Water				
02/05/2011	07:46:57	-17	0.0	9.55	0.0					
02/05/2011	07:46:58					20 bbl S001				
02/05/2011	07:46:58					10 bbl Water				
02/05/2011	07:46:58					30 bbl ZoneLock				
02/05/2011	07:46:58					10 bbl Water				
02/05/2011	07:46:58					80 bbl Mud Cemnet Plus				
02/05/2011	07:46:58					10 bbl Water				
02/05/2011	07:46:58					20 bbl S001				
02/05/2011	07:46:58	-17	0.0	9.55	0.0					
02/05/2011	07:46:59					10 bbl Water				
02/05/2011	07:46:59	-17	0.0	9.55	0.0					
02/05/2011	07:47:58	-22	0.0	9.55	0.0					
02/05/2011	07:50:28	-19	0.0	9.35	0.0					
02/05/2011	07:52:58	-18	0.0	8.57	2.2					
02/05/2011	07:55:28	1624	0.0	8.58	2.2					
02/05/2011	07:57:58	-12	0.0	8.58	2.2					
02/05/2011	08:00:28	66	3.6	8.86	2.7					
02/05/2011	08:02:58	161	6.2	8.96	16.3					
02/05/2011	08:05:28	156	6.4	9.05	32.1					
02/05/2011	08:06:53					30 bbl ZoneLock				
02/05/2011	08:06:53					50 bbl 8.6 MudPush				
02/05/2011	08:06:53	161	6.2	9.03	41.0					
02/05/2011	08:07:58	172	6.2	8.98	47.9					
02/05/2011	08:10:28	180	6.2	9.02	63.7					
02/05/2011	08:12:58	151	6.4	9.00	79.5					
02/05/2011	08:15:28	202	6.4	9.41	95.2					
02/05/2011	08:17:58	174	6.4	8.75	111.0					
02/05/2011	08:20:28	267	6.4	10.16	126.8					
02/05/2011	08:22:58	249	6.5	10.21	142.7					
02/05/2011	08:25:28	163	6.5	8.60	158.7					
02/05/2011	08:27:58	202	6.5	8.86	174.9					
02/05/2011	08:30:28	172	6.5	9.02	191.2					
02/05/2011	08:32:58	152	6.5	9.08	207.5					
02/05/2011	08:35:28	140	6.4	9.13	223.7					
02/05/2011	08:37:58	193	6.5	9.02	239.7					
02/05/2011	08:40:28	165	6.5	8.88	255.9					
02/05/2011	08:42:58	168	6.5	9.25	272.4					
02/05/2011	08:45:28	165	6.5	8.83	288.6					
02/05/2011	08:47:58	233	6.5	10.18	304.7					
02/05/2011	08:50:28	229	6.5	10.21	320.9					
02/05/2011	08:52:58	141	6.5	8.62	334.6					
02/05/2011	08:55:28	140	6.5	8.58	350.9					
02/05/2011	08:57:58	93	6.3	9.04	366.8					
02/05/2011	09:00:28	108	6.5	8.79	383.0					
02/05/2011	09:01:42					Returns				

Well			Field		Job Start		Customer		Job Number	
SGU 8502E-25 F25 496 SGU 8502E-25 F25 496			N Parachute		Feb/05/2011		Encana		BJ90-00148	
Date	Time 24-hr clock	Treating Pressure PSI	Flow Rate B/M	Density LB/G	Volume BBL	Message				
02/05/2011	09:02:58	106	6.1	8.99	398.8					
02/05/2011	09:05:28	123	5.9	8.82	414.0					
02/05/2011	09:07:58	153	5.9	8.88	428.8					
02/05/2011	09:10:28	107	6.1	8.72	443.6					
02/05/2011	09:12:58	179	6.5	9.21	459.7					
02/05/2011	09:13:30					Reset Total, Vol = 463.13 bbl				
02/05/2011	09:13:30	204	6.4	9.33	463.1					
02/05/2011	09:13:33					562 bbl (1127 sks) 9 ppg LiteCrete				
02/05/2011	09:13:33					Take Wet and Dry Sample				
02/05/2011	09:13:33					Sample = 9 ppg				
02/05/2011	09:13:33	191	6.5	9.35	463.5					
02/05/2011	09:13:34					Returns				
02/05/2011	09:13:34	201	6.5	9.35	463.6					
02/05/2011	09:15:28	211	6.5	9.66	475.9					
02/05/2011	09:17:58	209	6.5	9.75	491.6					
02/05/2011	09:20:28	347	8.4	9.83	508.9					
02/05/2011	09:22:58	282	8.3	9.82	529.8					
02/05/2011	09:25:28	230	8.4	9.63	550.6					
02/05/2011	09:27:58	157	6.3	9.65	567.6					
02/05/2011	09:30:28	174	6.4	9.70	583.4					
02/05/2011	09:32:58	159	6.3	9.62	599.3					
02/05/2011	09:35:28	181	6.3	9.52	615.2					
02/05/2011	09:37:58	175	6.3	9.51	631.1					
02/05/2011	09:40:28	190	6.4	9.50	646.9					
02/05/2011	09:42:58	159	6.3	9.51	662.8					
02/05/2011	09:45:28	162	6.4	9.54	678.8					
02/05/2011	09:47:58	167	6.4	9.51	694.8					
02/05/2011	09:50:28	168	6.3	9.49	710.6					
02/05/2011	09:52:58	170	6.3	9.54	726.5					
02/05/2011	09:55:28	149	6.4	9.55	742.3					
02/05/2011	09:57:58	141	6.4	9.42	758.2					
02/05/2011	10:00:28	158	6.3	9.61	774.1					
02/05/2011	10:02:58	179	6.4	9.67	790.0					
02/05/2011	10:05:28	183	6.4	9.63	806.0					
02/05/2011	10:07:58	182	6.3	9.60	821.9					
02/05/2011	10:10:28	179	6.3	9.56	837.8					
02/05/2011	10:12:58	182	6.3	9.55	853.6					
02/05/2011	10:15:28	196	6.3	9.58	869.5					
02/05/2011	10:17:58	210	6.3	9.61	885.3					
02/05/2011	10:20:28	208	6.5	9.64	901.3					
02/05/2011	10:22:58	227	6.5	9.72	917.5					
02/05/2011	10:25:28	246	6.5	9.75	933.7					
02/05/2011	10:27:58	232	6.5	9.73	949.9					
02/05/2011	10:30:28	240	6.5	9.73	966.1					
02/05/2011	10:32:58	213	6.5	9.71	982.3					
02/05/2011	10:35:28	229	6.5	9.65	998.4					
02/05/2011	10:37:58	233	6.5	9.65	1014.6					
02/05/2011	10:40:28	239	6.5	9.71	1030.7					
02/05/2011	10:42:58	54	3.3	8.66	1043.2					
02/05/2011	10:45:28	150	5.8	8.62	1056.0					
02/05/2011	10:45:40					End Cement Slurry				
02/05/2011	10:45:40	150	5.8	8.62	1057.2					
02/05/2011	10:45:44					Drop Top Plug				
02/05/2011	10:45:44	161	5.8	8.62	1057.6					

Well			Field		Job Start		Customer		Job Number	
SGU 8502E-25 F25 496 SGU 8502E-25 F25 496			N Parachute		Feb/05/2011		Encana		BJ90-00148	
Date	Time 24-hr clock	Treating Pressure PSI	Flow Rate B/M	Density LB/G	Volume BBL	Message				
02/05/2011	10:45:46	170	5.8	8.62	1057.8					
02/05/2011	10:45:48					Displace 230 bbl Water				
02/05/2011	10:45:48	173	5.8	8.61	1058.0					
02/05/2011	10:45:49					Cement back to Surface @ Start of Displacement				
02/05/2011	10:45:49					230 bbl Cement Back to Surface				
02/05/2011	10:45:49					Good Returns				
02/05/2011	10:45:49	145	5.8	8.62	1058.1					
02/05/2011	10:47:58	176	6.0	8.40	1070.8					
02/05/2011	10:50:28	180	5.9	8.73	1085.5					
02/05/2011	10:52:58	165	6.3	8.29	1100.2					
02/05/2011	10:55:28	248	6.5	8.62	1115.2					
02/05/2011	10:57:58	303	7.8	8.61	1134.3					
02/05/2011	11:00:28	310	7.8	8.62	1153.9					
02/05/2011	11:02:58	338	7.8	8.62	1173.4					
02/05/2011	11:05:28	363	7.8	8.62	1192.9					
02/05/2011	11:07:58	380	7.8	8.61	1212.4					
02/05/2011	11:10:28	378	7.8	8.61	1231.9					
02/05/2011	11:12:58	322	7.6	8.61	1251.4					
02/05/2011	11:15:28	247	4.3	8.61	1265.1					
02/05/2011	11:17:58	208	2.3	8.61	1273.5					
02/05/2011	11:20:28	794	0.0	8.61	1276.9					
02/05/2011	11:22:58	97	0.0	8.61	1276.9					
02/05/2011	11:25:07					Bump Top Plug				
02/05/2011	11:25:07	-17	0.0	8.61	1276.9					
02/05/2011	11:25:08					End Displacement				
02/05/2011	11:25:08	-17	0.0	8.61	1276.9					
02/05/2011	11:25:28	-17	0.0	8.61	1276.9					
02/05/2011	11:26:52					Bump Plug at 227 Away				
02/05/2011	11:26:52					Bled off Pressure				
02/05/2011	11:26:52					1 bbl Back				
02/05/2011	11:26:52					Flotas Held				
02/05/2011	11:26:52	-16	0.0	8.61	1276.9					

Post Job Summary

Average Pump Rates, bbl/min					Volume of Fluid Injected, bbl				
Slurry	N2	Mud	Maximum Rate		Total Slurry	Mud	Spacer	N2	
6.4		0.0	25.0		1276.9	0.0	635.0		
Treating Pressure Summary, psi					Breakdown Fluid				
Maximum	Final	Average	Bump Plug to	Breakdown	Type	Volume	Density		
4053	-16	237	900		FreshWater	668.0 bbl	8.34 lb/gal		
Avg. N2 Percent		Designed Slurry Volume 562.0 bbl	Displacement 219.4 bbl	Mix Water Temp 75 degF	Cement Circulated to Surface?		Volume		
					<input checked="" type="checkbox"/>		To		
					Washed Thru Perfs				
					<input type="checkbox"/>				
Customer or Authorized Representative Mike Quintana			Schlumberger Supervisor Tom Leduc			Circulation Lost		Job Completed	
						<input type="checkbox"/>		<input checked="" type="checkbox"/>	
						-		-	