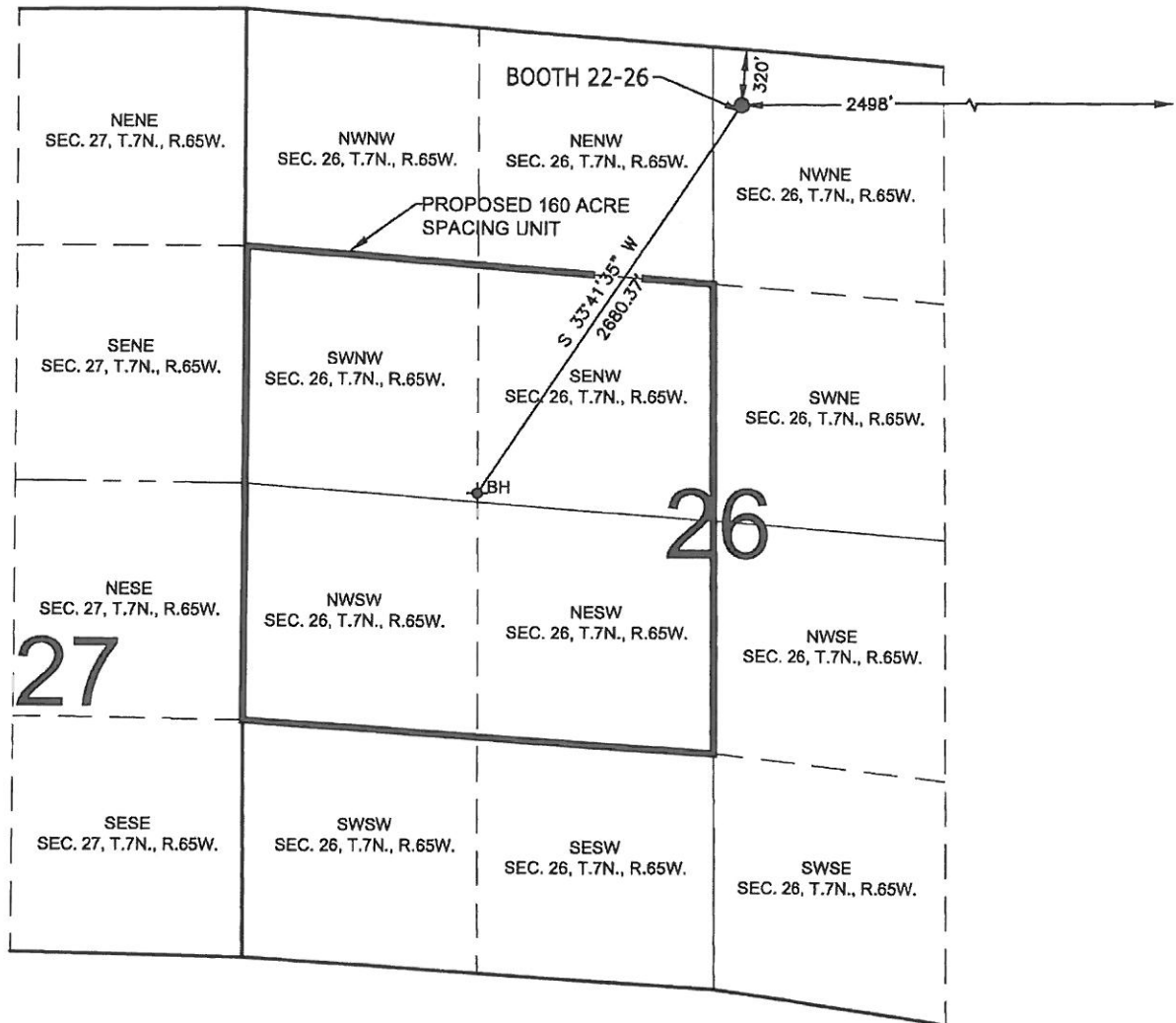


PROPOSED 318 Ae SPACING UNIT

SECTION 26, TOWNSHIP 7 NORTH, RANGE 65 WEST, 6TH P.M.



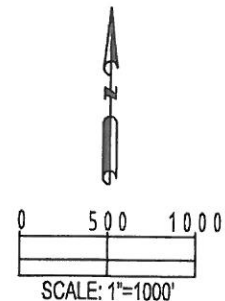
WELL BOOTH 22-26 TO BE LOCATED 320' FNL AND 2498' FEL, T7N, R65W, SEC. 26

SURFACE LOCATION
 LATITUDE= 40.552080°
 LONGITUDE= 104.629555°

BOTTOM HOLE LOCATION
 LATITUDE= 40.545998°
 LONGITUDE= 104.634983°

LEGEND

⊕ = EXISTING MONUMENT ⊕ = BOTTOM HOLE BH = BOTTOM HOLE
 ● = PROPOSED WELL ♦ = EXISTING WELL



| | | |
|---|--------------------------|---|
| PREPARED BY PFS Petroleum Field Services, LLC 1801 W. 13th Ave. Denver, CO 80204 | FIELD DATE: 03-20-12 | SURFACE LOCATION NW 1/4 NE 1/4, SEC. 26, T7N, R65W WELD COUNTY, COLORADO |
| | DRAWING DATE 07-26-12 | |
| | BY: CLM | CHECKED: RDW |