

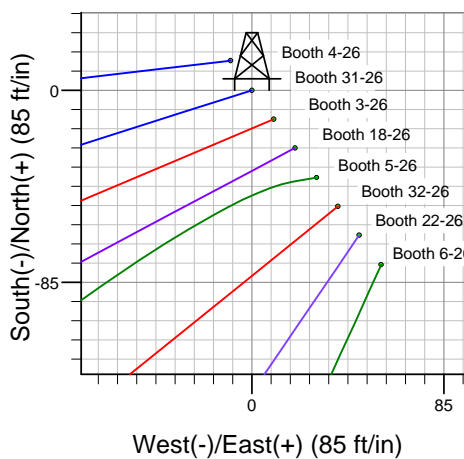
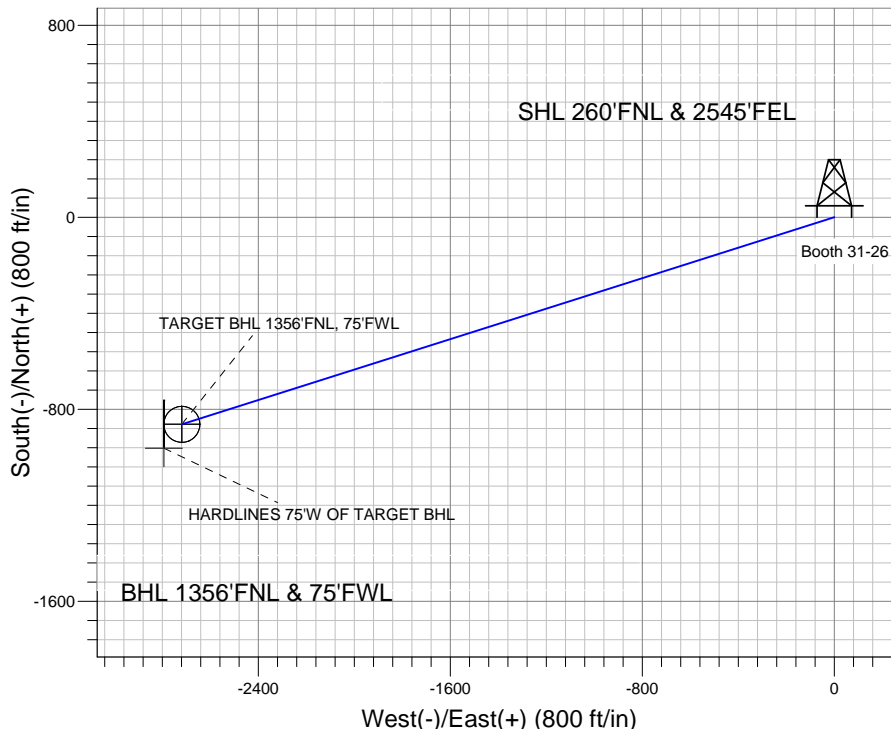
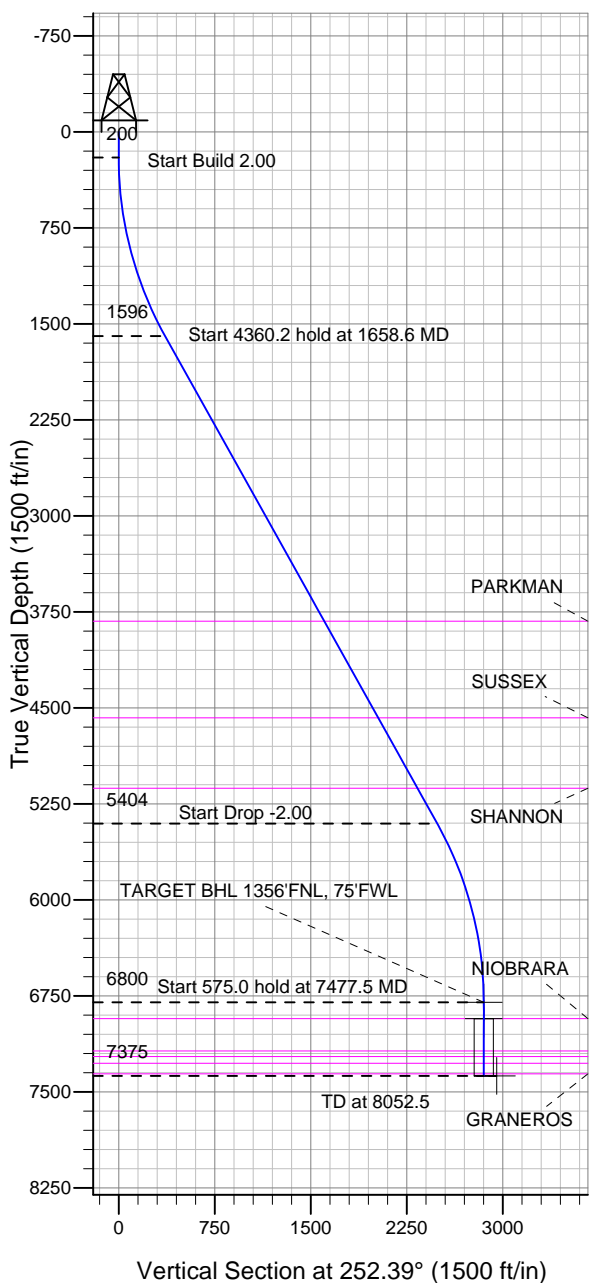
# ENSIGN

## Directional

### Well Name: Booth 31-26

Surface Location: Booth 8 Pad Sec.26-T7N-R65W  
 North American Datum 1983 US State Plane 1983 Colorado Northern Zone  
 Ground Elevation: 4893.0  
 +N/-S +E/-W Northing Easting Latitude Longitude Slot  
 0.0 0.0 1445214.47 3241832.07 40.552256 -104.629726  
 Original Well Elev WELL @ 4909.0ft (Original Well Elev)

## BAYSWATER EXPLORATION & PRODUCTION



Booth 8 Pad Sec.26-T7N-R65W  
 Booth 31-26  
 Plan #1 (5-22-12)  
 8:23, May 25 2012



Azimuths to True North  
 Magnetic North: 8.68°

Magnetic Field  
 Strength: 53125.3snT  
 Dip Angle: 67.16°  
 Date: 5/25/2012  
 Model: IGRF2010

### WELLBORE TARGET DETAILS (LAT/LONG)

Name	TVD	+N/-S	+E/-W	Latitude	Longitude	Shape
TARGET BHL 1356'FNL, 75'FWL	6800.0	-862.9	-2718.4	40.549887	-104.639508	Point
TARGET CIRCLE 1356'FNL & 75'FWL	6928.0	-862.9	-2718.4	40.549887	-104.639508	Circle (Radius: 75.0)
HARDLINES 75'W OF TARGET BHL	7375.0	-962.9	-2793.4	40.549613	-104.639778	Polygon

### SECTION DETAILS

Sec	MD	Inc	Azi	TVD	+N/-S	+E/-W	DLeg	TFace	VSec	Target
1	0.0	0.00	0.00	0.0	0.0	0.0	0.00	0.00	0.0	
2	200.0	0.00	0.00	200.0	0.0	0.0	0.00	0.00	0.0	
3	1658.6	29.17	252.39	1596.4	-109.9	-346.4	2.00	252.39	363.4	
4	6018.9	29.17	252.39	5403.6	-753.0	-2372.1	0.00	0.00	2488.7	
5	7477.5	0.00	0.00	6800.0	-862.9	-2718.4	2.00	180.00	2852.1	TARGET BHL 1356'FNL, 75'FWL
6	8052.5	0.00	0.00	7375.0	-862.9	-2718.4	0.00	0.00	2852.1	



## **Directional**

# **BAYSWATER EXPLORATION & PRODUCTION**

**SEC.26-T7N-R65W**

**Booth 8 Pad Sec.26-T7N-R65W**

**Booth 31-26**

**Wellbore #1**

**Plan: Plan #1 (5-22-12)**

## **Standard Planning Report**

**25 May, 2012**

Plan Sections										
Measured Depth (ft)	Inclination (°)	Azimuth (°)	Vertical Depth (ft)	+N/-S (ft)	+E/-W (ft)	Dogleg Rate (°/100ft)	Build Rate (°/100ft)	Turn Rate (°/100ft)	TFO (°)	Target
0.0	0.00	0.00	0.0	0.0	0.0	0.00	0.00	0.00	0.00	
200.0	0.00	0.00	200.0	0.0	0.0	0.00	0.00	0.00	0.00	
1,658.6	29.17	252.39	1,596.4	-109.9	-346.4	2.00	2.00	0.00	252.39	
6,018.9	29.17	252.39	5,403.6	-753.0	-2,372.1	0.00	0.00	0.00	0.00	
7,477.5	0.00	0.00	6,800.0	-862.9	-2,718.4	2.00	-2.00	0.00	180.00	TARGET BHL 1356
8,052.5	0.00	0.00	7,375.0	-862.9	-2,718.4	0.00	0.00	0.00	0.00	

<b>Database:</b>	Landmark	<b>Local Co-ordinate Reference:</b>	Well Booth 31-26
<b>Company:</b>	BAYSWATER EXPLORATION & PRODUCTION	<b>TVD Reference:</b>	WELL @ 4909.0ft (Original Well Elev)
<b>Project:</b>	SEC.26-T7N-R65W	<b>MD Reference:</b>	WELL @ 4909.0ft (Original Well Elev)
<b>Site:</b>	Booth 8 Pad Sec.26-T7N-R65W	<b>North Reference:</b>	True
<b>Well:</b>	Booth 31-26	<b>Survey Calculation Method:</b>	Minimum Curvature
<b>Wellbore:</b>	Wellbore #1		
<b>Design:</b>	Plan #1 (5-22-12)		

### Planned Survey

Measured Depth (ft)	Inclination (°)	Azimuth (°)	Vertical Depth (ft)	+N/-S (ft)	+E/-W (ft)	Vertical Section (ft)	Dogleg Rate (°/100ft)	Build Rate (°/100ft)	Turn Rate (°/100ft)
0.0	0.00	0.00	0.0	0.0	0.0	0.0	0.00	0.00	0.00
40.0	0.00	0.00	40.0	0.0	0.0	0.0	0.00	0.00	0.00
80.0	0.00	0.00	80.0	0.0	0.0	0.0	0.00	0.00	0.00
120.0	0.00	0.00	120.0	0.0	0.0	0.0	0.00	0.00	0.00
160.0	0.00	0.00	160.0	0.0	0.0	0.0	0.00	0.00	0.00
200.0	0.00	0.00	200.0	0.0	0.0	0.0	0.00	0.00	0.00
240.0	0.80	252.39	240.0	-0.1	-0.3	0.3	2.00	2.00	0.00
280.0	1.60	252.39	280.0	-0.3	-1.1	1.1	2.00	2.00	0.00
320.0	2.40	252.39	320.0	-0.8	-2.4	2.5	2.00	2.00	0.00
360.0	3.20	252.39	359.9	-1.4	-4.3	4.5	2.00	2.00	0.00
400.0	4.00	252.39	399.8	-2.1	-6.7	7.0	2.00	2.00	0.00
440.0	4.80	252.39	439.7	-3.0	-9.6	10.0	2.00	2.00	0.00
480.0	5.60	252.39	479.6	-4.1	-13.0	13.7	2.00	2.00	0.00
520.0	6.40	252.39	519.3	-5.4	-17.0	17.9	2.00	2.00	0.00
560.0	7.20	252.39	559.1	-6.8	-21.5	22.6	2.00	2.00	0.00
600.0	8.00	252.39	598.7	-8.4	-26.6	27.9	2.00	2.00	0.00
640.0	8.80	252.39	638.3	-10.2	-32.1	33.7	2.00	2.00	0.00
680.0	9.60	252.39	677.8	-12.1	-38.2	40.1	2.00	2.00	0.00
692.4	9.85	252.39	690.0	-12.8	-40.2	42.2	2.00	2.00	0.00
<b>8 5/8"</b>									
720.0	10.40	252.39	717.1	-14.2	-44.9	47.1	2.00	2.00	0.00
760.0	11.20	252.39	756.4	-16.5	-52.0	54.6	2.00	2.00	0.00
800.0	12.00	252.39	795.6	-18.9	-59.7	62.6	2.00	2.00	0.00
840.0	12.80	252.39	834.7	-21.5	-67.9	71.2	2.00	2.00	0.00
880.0	13.60	252.39	873.6	-24.3	-76.6	80.3	2.00	2.00	0.00
920.0	14.40	252.39	912.4	-27.2	-85.8	90.0	2.00	2.00	0.00
960.0	15.20	252.39	951.1	-30.3	-95.5	100.2	2.00	2.00	0.00
1,000.0	16.00	252.39	989.6	-33.6	-105.8	111.0	2.00	2.00	0.00
1,040.0	16.80	252.39	1,028.0	-37.0	-116.5	122.3	2.00	2.00	0.00
1,080.0	17.60	252.39	1,066.2	-40.6	-127.8	134.1	2.00	2.00	0.00
1,120.0	18.40	252.39	1,104.3	-44.3	-139.6	146.5	2.00	2.00	0.00
1,160.0	19.20	252.39	1,142.1	-48.2	-151.9	159.3	2.00	2.00	0.00
1,200.0	20.00	252.39	1,179.8	-52.3	-164.7	172.8	2.00	2.00	0.00
1,240.0	20.80	252.39	1,217.3	-56.5	-178.0	186.7	2.00	2.00	0.00
1,280.0	21.60	252.39	1,254.6	-60.9	-191.7	201.2	2.00	2.00	0.00
1,320.0	22.40	252.39	1,291.7	-65.4	-206.0	216.2	2.00	2.00	0.00
1,360.0	23.20	252.39	1,328.6	-70.1	-220.8	231.7	2.00	2.00	0.00
1,400.0	24.00	252.39	1,365.2	-74.9	-236.1	247.7	2.00	2.00	0.00
1,440.0	24.80	252.39	1,401.6	-79.9	-251.8	264.2	2.00	2.00	0.00
1,480.0	25.60	252.39	1,437.8	-85.1	-268.0	281.2	2.00	2.00	0.00
1,520.0	26.40	252.39	1,473.8	-90.4	-284.8	298.8	2.00	2.00	0.00
1,560.0	27.20	252.39	1,509.5	-95.8	-302.0	316.8	2.00	2.00	0.00
1,600.0	28.00	252.39	1,544.9	-101.5	-319.6	335.3	2.00	2.00	0.00
1,640.0	28.80	252.39	1,580.1	-107.2	-337.7	354.4	2.00	2.00	0.00
1,658.6	29.17	252.39	1,596.4	-109.9	-346.4	363.4	2.00	2.00	0.00
1,680.0	29.17	252.39	1,615.1	-113.1	-356.3	373.8	0.00	0.00	0.00
1,720.0	29.17	252.39	1,650.0	-119.0	-374.9	393.3	0.00	0.00	0.00
1,760.0	29.17	252.39	1,684.9	-124.9	-393.4	412.8	0.00	0.00	0.00
1,800.0	29.17	252.39	1,719.9	-130.8	-412.0	432.3	0.00	0.00	0.00
1,840.0	29.17	252.39	1,754.8	-136.7	-430.6	451.8	0.00	0.00	0.00
1,880.0	29.17	252.39	1,789.7	-142.6	-449.2	471.3	0.00	0.00	0.00
1,920.0	29.17	252.39	1,824.6	-148.5	-467.8	490.8	0.00	0.00	0.00
1,960.0	29.17	252.39	1,859.6	-154.4	-486.4	510.3	0.00	0.00	0.00

<b>Database:</b>	Landmark	<b>Local Co-ordinate Reference:</b>	Well Booth 31-26
<b>Company:</b>	BAYSWATER EXPLORATION & PRODUCTION	<b>TVD Reference:</b>	WELL @ 4909.0ft (Original Well Elev)
<b>Project:</b>	SEC.26-T7N-R65W	<b>MD Reference:</b>	WELL @ 4909.0ft (Original Well Elev)
<b>Site:</b>	Booth 8 Pad Sec.26-T7N-R65W	<b>North Reference:</b>	True
<b>Well:</b>	Booth 31-26	<b>Survey Calculation Method:</b>	Minimum Curvature
<b>Wellbore:</b>	Wellbore #1		
<b>Design:</b>	Plan #1 (5-22-12)		

Planned Survey									
Measured Depth (ft)	Inclination (°)	Azimuth (°)	Vertical Depth (ft)	+N/-S (ft)	+E/-W (ft)	Vertical Section (ft)	Dogleg Rate (°/100ft)	Build Rate (°/100ft)	Turn Rate (°/100ft)
2,000.0	29.17	252.39	1,894.5	-160.3	-505.0	529.8	0.00	0.00	0.00
2,040.0	29.17	252.39	1,929.4	-166.2	-523.5	549.3	0.00	0.00	0.00
2,080.0	29.17	252.39	1,964.3	-172.1	-542.1	568.8	0.00	0.00	0.00
2,120.0	29.17	252.39	1,999.3	-178.0	-560.7	588.3	0.00	0.00	0.00
2,160.0	29.17	252.39	2,034.2	-183.9	-579.3	607.8	0.00	0.00	0.00
2,200.0	29.17	252.39	2,069.1	-189.8	-597.9	627.3	0.00	0.00	0.00
2,240.0	29.17	252.39	2,104.0	-195.7	-616.5	646.8	0.00	0.00	0.00
2,280.0	29.17	252.39	2,139.0	-201.6	-635.0	666.3	0.00	0.00	0.00
2,320.0	29.17	252.39	2,173.9	-207.5	-653.6	685.8	0.00	0.00	0.00
2,360.0	29.17	252.39	2,208.8	-213.4	-672.2	705.3	0.00	0.00	0.00
2,400.0	29.17	252.39	2,243.8	-219.3	-690.8	724.8	0.00	0.00	0.00
2,440.0	29.17	252.39	2,278.7	-225.2	-709.4	744.3	0.00	0.00	0.00
2,480.0	29.17	252.39	2,313.6	-231.1	-728.0	763.8	0.00	0.00	0.00
2,520.0	29.17	252.39	2,348.5	-237.0	-746.5	783.2	0.00	0.00	0.00
2,560.0	29.17	252.39	2,383.5	-242.9	-765.1	802.7	0.00	0.00	0.00
2,600.0	29.17	252.39	2,418.4	-248.8	-783.7	822.2	0.00	0.00	0.00
2,640.0	29.17	252.39	2,453.3	-254.7	-802.3	841.7	0.00	0.00	0.00
2,680.0	29.17	252.39	2,488.2	-260.6	-820.9	861.2	0.00	0.00	0.00
2,720.0	29.17	252.39	2,523.2	-266.5	-839.5	880.7	0.00	0.00	0.00
2,760.0	29.17	252.39	2,558.1	-272.4	-858.0	900.2	0.00	0.00	0.00
2,800.0	29.17	252.39	2,593.0	-278.3	-876.6	919.7	0.00	0.00	0.00
2,840.0	29.17	252.39	2,627.9	-284.2	-895.2	939.2	0.00	0.00	0.00
2,880.0	29.17	252.39	2,662.9	-290.1	-913.8	958.7	0.00	0.00	0.00
2,920.0	29.17	252.39	2,697.8	-296.0	-932.4	978.2	0.00	0.00	0.00
2,960.0	29.17	252.39	2,732.7	-301.9	-951.0	997.7	0.00	0.00	0.00
3,000.0	29.17	252.39	2,767.6	-307.8	-969.5	1,017.2	0.00	0.00	0.00
3,040.0	29.17	252.39	2,802.6	-313.7	-988.1	1,036.7	0.00	0.00	0.00
3,080.0	29.17	252.39	2,837.5	-319.6	-1,006.7	1,056.2	0.00	0.00	0.00
3,120.0	29.17	252.39	2,872.4	-325.5	-1,025.3	1,075.7	0.00	0.00	0.00
3,160.0	29.17	252.39	2,907.3	-331.4	-1,043.9	1,095.2	0.00	0.00	0.00
3,200.0	29.17	252.39	2,942.3	-337.3	-1,062.5	1,114.7	0.00	0.00	0.00
3,240.0	29.17	252.39	2,977.2	-343.2	-1,081.0	1,134.2	0.00	0.00	0.00
3,280.0	29.17	252.39	3,012.1	-349.1	-1,099.6	1,153.7	0.00	0.00	0.00
3,320.0	29.17	252.39	3,047.1	-355.0	-1,118.2	1,173.2	0.00	0.00	0.00
3,360.0	29.17	252.39	3,082.0	-360.9	-1,136.8	1,192.7	0.00	0.00	0.00
3,400.0	29.17	252.39	3,116.9	-366.8	-1,155.4	1,212.2	0.00	0.00	0.00
3,440.0	29.17	252.39	3,151.8	-372.7	-1,174.0	1,231.7	0.00	0.00	0.00
3,480.0	29.17	252.39	3,186.8	-378.6	-1,192.6	1,251.2	0.00	0.00	0.00
3,520.0	29.17	252.39	3,221.7	-384.5	-1,211.1	1,270.7	0.00	0.00	0.00
3,560.0	29.17	252.39	3,256.6	-390.4	-1,229.7	1,290.2	0.00	0.00	0.00
3,600.0	29.17	252.39	3,291.5	-396.3	-1,248.3	1,309.7	0.00	0.00	0.00
3,640.0	29.17	252.39	3,326.5	-402.1	-1,266.9	1,329.2	0.00	0.00	0.00
3,680.0	29.17	252.39	3,361.4	-408.0	-1,285.5	1,348.7	0.00	0.00	0.00
3,720.0	29.17	252.39	3,396.3	-413.9	-1,304.1	1,368.2	0.00	0.00	0.00
3,760.0	29.17	252.39	3,431.2	-419.8	-1,322.6	1,387.7	0.00	0.00	0.00
3,800.0	29.17	252.39	3,466.2	-425.7	-1,341.2	1,407.2	0.00	0.00	0.00
3,840.0	29.17	252.39	3,501.1	-431.6	-1,359.8	1,426.7	0.00	0.00	0.00
3,880.0	29.17	252.39	3,536.0	-437.5	-1,378.4	1,446.2	0.00	0.00	0.00
3,920.0	29.17	252.39	3,570.9	-443.4	-1,397.0	1,465.7	0.00	0.00	0.00
3,960.0	29.17	252.39	3,605.9	-449.3	-1,415.6	1,485.2	0.00	0.00	0.00
4,000.0	29.17	252.39	3,640.8	-455.2	-1,434.1	1,504.7	0.00	0.00	0.00
4,040.0	29.17	252.39	3,675.7	-461.1	-1,452.7	1,524.2	0.00	0.00	0.00
4,080.0	29.17	252.39	3,710.7	-467.0	-1,471.3	1,543.7	0.00	0.00	0.00

<b>Database:</b>	Landmark	<b>Local Co-ordinate Reference:</b>	Well Booth 31-26
<b>Company:</b>	BAYSWATER EXPLORATION & PRODUCTION	<b>TVD Reference:</b>	WELL @ 4909.0ft (Original Well Elev)
<b>Project:</b>	SEC.26-T7N-R65W	<b>MD Reference:</b>	WELL @ 4909.0ft (Original Well Elev)
<b>Site:</b>	Booth 8 Pad Sec.26-T7N-R65W	<b>North Reference:</b>	True
<b>Well:</b>	Booth 31-26	<b>Survey Calculation Method:</b>	Minimum Curvature
<b>Wellbore:</b>	Wellbore #1		
<b>Design:</b>	Plan #1 (5-22-12)		

Planned Survey									
Measured Depth (ft)	Inclination (°)	Azimuth (°)	Vertical Depth (ft)	+N/-S (ft)	+E/-W (ft)	Vertical Section (ft)	Dogleg Rate (°/100ft)	Build Rate (°/100ft)	Turn Rate (°/100ft)
4,120.0	29.17	252.39	3,745.6	-472.9	-1,489.9	1,563.2	0.00	0.00	0.00
4,160.0	29.17	252.39	3,780.5	-478.8	-1,508.5	1,582.7	0.00	0.00	0.00
4,200.0	29.17	252.39	3,815.4	-484.7	-1,527.1	1,602.2	0.00	0.00	0.00
4,208.7	29.17	252.39	3,823.0	-486.0	-1,531.1	1,606.4	0.00	0.00	0.00
<b>PARKMAN</b>									
4,240.0	29.17	252.39	3,850.4	-490.6	-1,545.6	1,621.6	0.00	0.00	0.00
4,280.0	29.17	252.39	3,885.3	-496.5	-1,564.2	1,641.1	0.00	0.00	0.00
4,320.0	29.17	252.39	3,920.2	-502.4	-1,582.8	1,660.6	0.00	0.00	0.00
4,360.0	29.17	252.39	3,955.1	-508.3	-1,601.4	1,680.1	0.00	0.00	0.00
4,400.0	29.17	252.39	3,990.1	-514.2	-1,620.0	1,699.6	0.00	0.00	0.00
4,440.0	29.17	252.39	4,025.0	-520.1	-1,638.6	1,719.1	0.00	0.00	0.00
4,480.0	29.17	252.39	4,059.9	-526.0	-1,657.1	1,738.6	0.00	0.00	0.00
4,520.0	29.17	252.39	4,094.8	-531.9	-1,675.7	1,758.1	0.00	0.00	0.00
4,560.0	29.17	252.39	4,129.8	-537.8	-1,694.3	1,777.6	0.00	0.00	0.00
4,600.0	29.17	252.39	4,164.7	-543.7	-1,712.9	1,797.1	0.00	0.00	0.00
4,640.0	29.17	252.39	4,199.6	-549.6	-1,731.5	1,816.6	0.00	0.00	0.00
4,680.0	29.17	252.39	4,234.5	-555.5	-1,750.1	1,836.1	0.00	0.00	0.00
4,720.0	29.17	252.39	4,269.5	-561.4	-1,768.7	1,855.6	0.00	0.00	0.00
4,760.0	29.17	252.39	4,304.4	-567.3	-1,787.2	1,875.1	0.00	0.00	0.00
4,800.0	29.17	252.39	4,339.3	-573.2	-1,805.8	1,894.6	0.00	0.00	0.00
4,840.0	29.17	252.39	4,374.3	-579.1	-1,824.4	1,914.1	0.00	0.00	0.00
4,880.0	29.17	252.39	4,409.2	-585.0	-1,843.0	1,933.6	0.00	0.00	0.00
4,920.0	29.17	252.39	4,444.1	-590.9	-1,861.6	1,953.1	0.00	0.00	0.00
4,960.0	29.17	252.39	4,479.0	-596.8	-1,880.2	1,972.6	0.00	0.00	0.00
5,000.0	29.17	252.39	4,514.0	-602.7	-1,898.7	1,992.1	0.00	0.00	0.00
5,040.0	29.17	252.39	4,548.9	-608.6	-1,917.3	2,011.6	0.00	0.00	0.00
5,073.3	29.17	252.39	4,578.0	-613.5	-1,932.8	2,027.9	0.00	0.00	0.00
<b>SUSSEX</b>									
5,080.0	29.17	252.39	4,583.8	-614.5	-1,935.9	2,031.1	0.00	0.00	0.00
5,120.0	29.17	252.39	4,618.7	-620.4	-1,954.5	2,050.6	0.00	0.00	0.00
5,160.0	29.17	252.39	4,653.7	-626.3	-1,973.1	2,070.1	0.00	0.00	0.00
5,200.0	29.17	252.39	4,688.6	-632.2	-1,991.7	2,089.6	0.00	0.00	0.00
5,240.0	29.17	252.39	4,723.5	-638.1	-2,010.2	2,109.1	0.00	0.00	0.00
5,280.0	29.17	252.39	4,758.4	-644.0	-2,028.8	2,128.6	0.00	0.00	0.00
5,320.0	29.17	252.39	4,793.4	-649.9	-2,047.4	2,148.1	0.00	0.00	0.00
5,360.0	29.17	252.39	4,828.3	-655.8	-2,066.0	2,167.6	0.00	0.00	0.00
5,400.0	29.17	252.39	4,863.2	-661.7	-2,084.6	2,187.1	0.00	0.00	0.00
5,440.0	29.17	252.39	4,898.1	-667.6	-2,103.2	2,206.6	0.00	0.00	0.00
5,480.0	29.17	252.39	4,933.1	-673.5	-2,121.7	2,226.1	0.00	0.00	0.00
5,520.0	29.17	252.39	4,968.0	-679.4	-2,140.3	2,245.6	0.00	0.00	0.00
5,560.0	29.17	252.39	5,002.9	-685.3	-2,158.9	2,265.1	0.00	0.00	0.00
5,600.0	29.17	252.39	5,037.8	-691.2	-2,177.5	2,284.6	0.00	0.00	0.00
5,640.0	29.17	252.39	5,072.8	-697.1	-2,196.1	2,304.1	0.00	0.00	0.00
5,680.0	29.17	252.39	5,107.7	-703.0	-2,214.7	2,323.6	0.00	0.00	0.00
5,703.2	29.17	252.39	5,128.0	-706.4	-2,225.5	2,334.9	0.00	0.00	0.00
<b>SHANNON</b>									
5,720.0	29.17	252.39	5,142.6	-708.9	-2,233.2	2,343.1	0.00	0.00	0.00
5,760.0	29.17	252.39	5,177.6	-714.8	-2,251.8	2,362.6	0.00	0.00	0.00
5,800.0	29.17	252.39	5,212.5	-720.7	-2,270.4	2,382.1	0.00	0.00	0.00
5,840.0	29.17	252.39	5,247.4	-726.6	-2,289.0	2,401.6	0.00	0.00	0.00
5,880.0	29.17	252.39	5,282.3	-732.5	-2,307.6	2,421.1	0.00	0.00	0.00
5,920.0	29.17	252.39	5,317.3	-738.4	-2,326.2	2,440.6	0.00	0.00	0.00
5,960.0	29.17	252.39	5,352.2	-744.3	-2,344.8	2,460.0	0.00	0.00	0.00

<b>Database:</b>	Landmark	<b>Local Co-ordinate Reference:</b>	Well Booth 31-26
<b>Company:</b>	BAYSWATER EXPLORATION & PRODUCTION	<b>TVD Reference:</b>	WELL @ 4909.0ft (Original Well Elev)
<b>Project:</b>	SEC.26-T7N-R65W	<b>MD Reference:</b>	WELL @ 4909.0ft (Original Well Elev)
<b>Site:</b>	Booth 8 Pad Sec.26-T7N-R65W	<b>North Reference:</b>	True
<b>Well:</b>	Booth 31-26	<b>Survey Calculation Method:</b>	Minimum Curvature
<b>Wellbore:</b>	Wellbore #1		
<b>Design:</b>	Plan #1 (5-22-12)		

Planned Survey									
Measured Depth (ft)	Inclination (°)	Azimuth (°)	Vertical Depth (ft)	+N/-S (ft)	+E/-W (ft)	Vertical Section (ft)	Dogleg Rate (°/100ft)	Build Rate (°/100ft)	Turn Rate (°/100ft)
6,000.0	29.17	252.39	5,387.1	-750.2	-2,363.3	2,479.5	0.00	0.00	0.00
6,018.9	29.17	252.39	5,403.6	-753.0	-2,372.1	2,488.7	0.00	0.00	0.00
6,040.0	28.75	252.39	5,422.1	-756.1	-2,381.9	2,499.0	2.00	-2.00	0.00
6,080.0	27.95	252.39	5,457.3	-761.8	-2,400.0	2,518.0	2.00	-2.00	0.00
6,120.0	27.15	252.39	5,492.7	-767.4	-2,417.6	2,536.5	2.00	-2.00	0.00
6,160.0	26.35	252.39	5,528.5	-772.9	-2,434.8	2,554.5	2.00	-2.00	0.00
6,200.0	25.55	252.39	5,564.4	-778.2	-2,451.4	2,572.0	2.00	-2.00	0.00
6,240.0	24.75	252.39	5,600.6	-783.3	-2,467.6	2,589.0	2.00	-2.00	0.00
6,280.0	23.95	252.39	5,637.1	-788.3	-2,483.4	2,605.5	2.00	-2.00	0.00
6,320.0	23.15	252.39	5,673.7	-793.1	-2,498.6	2,621.4	2.00	-2.00	0.00
6,360.0	22.35	252.39	5,710.6	-797.8	-2,513.3	2,636.9	2.00	-2.00	0.00
6,400.0	21.55	252.39	5,747.7	-802.3	-2,527.6	2,651.9	2.00	-2.00	0.00
6,440.0	20.75	252.39	5,785.0	-806.7	-2,541.3	2,666.3	2.00	-2.00	0.00
6,480.0	19.95	252.39	5,822.5	-810.9	-2,554.6	2,680.2	2.00	-2.00	0.00
6,520.0	19.15	252.39	5,860.2	-815.0	-2,567.4	2,693.6	2.00	-2.00	0.00
6,560.0	18.35	252.39	5,898.1	-818.8	-2,579.6	2,706.5	2.00	-2.00	0.00
6,600.0	17.55	252.39	5,936.2	-822.6	-2,591.4	2,718.8	2.00	-2.00	0.00
6,640.0	16.75	252.39	5,974.4	-826.1	-2,602.6	2,730.6	2.00	-2.00	0.00
6,680.0	15.95	252.39	6,012.8	-829.6	-2,613.3	2,741.8	2.00	-2.00	0.00
6,720.0	15.15	252.39	6,051.3	-832.8	-2,623.6	2,752.6	2.00	-2.00	0.00
6,760.0	14.35	252.39	6,090.0	-835.9	-2,633.3	2,762.7	2.00	-2.00	0.00
6,800.0	13.55	252.39	6,128.8	-838.8	-2,642.5	2,772.4	2.00	-2.00	0.00
6,840.0	12.75	252.39	6,167.8	-841.5	-2,651.1	2,781.5	2.00	-2.00	0.00
6,880.0	11.95	252.39	6,206.8	-844.1	-2,659.3	2,790.0	2.00	-2.00	0.00
6,920.0	11.15	252.39	6,246.0	-846.6	-2,666.9	2,798.0	2.00	-2.00	0.00
6,960.0	10.35	252.39	6,285.3	-848.8	-2,674.0	2,805.5	2.00	-2.00	0.00
7,000.0	9.55	252.39	6,324.7	-850.9	-2,680.6	2,812.4	2.00	-2.00	0.00
7,040.0	8.75	252.39	6,364.2	-852.8	-2,686.7	2,818.8	2.00	-2.00	0.00
7,080.0	7.95	252.39	6,403.8	-854.6	-2,692.2	2,824.6	2.00	-2.00	0.00
7,120.0	7.15	252.39	6,443.4	-856.2	-2,697.2	2,829.8	2.00	-2.00	0.00
7,160.0	6.35	252.39	6,483.2	-857.6	-2,701.7	2,834.5	2.00	-2.00	0.00
7,200.0	5.55	252.39	6,522.9	-858.9	-2,705.7	2,838.7	2.00	-2.00	0.00
7,240.0	4.75	252.39	6,562.8	-859.9	-2,709.1	2,842.3	2.00	-2.00	0.00
7,280.0	3.95	252.39	6,602.7	-860.9	-2,712.0	2,845.3	2.00	-2.00	0.00
7,320.0	3.15	252.39	6,642.6	-861.6	-2,714.3	2,847.8	2.00	-2.00	0.00
7,360.0	2.35	252.39	6,682.5	-862.2	-2,716.2	2,849.7	2.00	-2.00	0.00
7,400.0	1.55	252.39	6,722.5	-862.6	-2,717.5	2,851.1	2.00	-2.00	0.00
7,440.0	0.75	252.39	6,762.5	-862.8	-2,718.2	2,851.9	2.00	-2.00	0.00
7,477.5	0.00	0.00	6,800.0	-862.9	-2,718.4	2,852.1	2.00	-2.00	0.00
<b>TARGET BHL 1356'FNL, 75'FWL</b>									
7,480.0	0.00	0.00	6,802.5	-862.9	-2,718.4	2,852.1	0.00	0.00	0.00
7,520.0	0.00	0.00	6,842.5	-862.9	-2,718.4	2,852.1	0.00	0.00	0.00
7,560.0	0.00	0.00	6,882.5	-862.9	-2,718.4	2,852.1	0.00	0.00	0.00
7,600.0	0.00	0.00	6,922.5	-862.9	-2,718.4	2,852.1	0.00	0.00	0.00
7,605.5	0.00	0.00	6,928.0	-862.9	-2,718.4	2,852.1	0.00	0.00	0.00
<b>NIOBRARA - TARGET CIRCLE 1356'FNL &amp; 75'FWL</b>									
7,640.0	0.00	0.00	6,962.5	-862.9	-2,718.4	2,852.1	0.00	0.00	0.00
7,680.0	0.00	0.00	7,002.5	-862.9	-2,718.4	2,852.1	0.00	0.00	0.00
7,720.0	0.00	0.00	7,042.5	-862.9	-2,718.4	2,852.1	0.00	0.00	0.00
7,760.0	0.00	0.00	7,082.5	-862.9	-2,718.4	2,852.1	0.00	0.00	0.00
7,800.0	0.00	0.00	7,122.5	-862.9	-2,718.4	2,852.1	0.00	0.00	0.00
7,840.0	0.00	0.00	7,162.5	-862.9	-2,718.4	2,852.1	0.00	0.00	0.00
7,857.5	0.00	0.00	7,180.0	-862.9	-2,718.4	2,852.1	0.00	0.00	0.00

Formations						
	Measured Depth (ft)	Vertical Depth (ft)	Name	Lithology	Dip (°)	Dip Direction (°)
	4,208.7	3,823.0	PARKMAN		0.00	
	5,073.3	4,578.0	SUSSEX		0.00	
	5,703.2	5,128.0	SHANNON		0.00	
	7,605.5	6,928.0	NIOBRARA		0.00	
	7,857.5	7,180.0	FORT HAYS		0.00	
	7,901.5	7,224.0	CODELL		0.00	
	7,953.5	7,276.0	GREENHORN		0.00	
	8,035.5	7,358.0	GRANEROS		0.00	





## **Directional**

# **BAYSWATER EXPLORATION & PRODUCTION**

**SEC.26-T7N-R65W**

**Booth 8 Pad Sec.26-T7N-R65W**

**Booth 31-26**

**Wellbore #1**

**Plan #1 (5-22-12)**

## **Anticollision Report**

**25 May, 2012**

<b>Company:</b>	BAYSWATER EXPLORATION & PRODUCTION	<b>Local Co-ordinate Reference:</b>	Well Booth 31-26
<b>Project:</b>	SEC.26-T7N-R65W	<b>TVD Reference:</b>	WELL @ 4909.0ft (Original Well Elev)
<b>Reference Site:</b>	Booth 8 Pad Sec.26-T7N-R65W	<b>MD Reference:</b>	WELL @ 4909.0ft (Original Well Elev)
<b>Site Error:</b>	0.0ft	<b>North Reference:</b>	True
<b>Reference Well:</b>	Booth 31-26	<b>Survey Calculation Method:</b>	Minimum Curvature
<b>Well Error:</b>	0.0ft	<b>Output errors are at</b>	2.00 sigma
<b>Reference Wellbore</b>	Wellbore #1	<b>Database:</b>	Landmark
<b>Reference Design:</b>	Plan #1 (5-22-12)	<b>Offset TVD Reference:</b>	Offset Datum

<b>Reference</b>	Plan #1 (5-22-12)		
<b>Filter type:</b>	NO GLOBAL FILTER: Using user defined selection & filtering criteria		
<b>Interpolation Method:</b>	Stations	<b>Error Model:</b>	ISCWSA
<b>Depth Range:</b>	Unlimited	<b>Scan Method:</b>	Closest Approach 3D
<b>Results Limited by:</b>	Maximum center-center distance of 10,000.0ft	<b>Error Surface:</b>	Elliptical Conic
<b>Warning Levels Evaluated at:</b>	2.00 Sigma		

<b>Survey Tool Program</b>	<b>Date</b> 5/25/2012			
<b>From (ft)</b>	<b>To (ft)</b>	<b>Survey (Wellbore)</b>	<b>Tool Name</b>	<b>Description</b>
0.0	8,052.5	Plan #1 (5-22-12) (Wellbore #1)	MWD	MWD - Standard

<b>Summary</b>						
<b>Site Name</b>	<b>Reference Measured Depth (ft)</b>	<b>Offset Measured Depth (ft)</b>	<b>Distance Between Centres (ft)</b>	<b>Between Ellipses (ft)</b>	<b>Separation Factor</b>	<b>Warning</b>
Offset Well - Wellbore - Design						
Booth 8 Pad Sec.26-T7N-R65W						
Booth 3-26 - Wellbore #1 - Plan #1 (5-22-12)	200.0	200.0	16.0	15.4	23.784	CC, ES
Booth 3-26 - Wellbore #1 - Plan #1 (5-22-12)	400.0	399.8	19.5	18.0	12.549	SF
Booth 4-26 - Wellbore #1 - Plan #1 (5-22-12)	100.0	100.0	16.2	15.9	71.931	CC, ES
Booth 4-26 - Wellbore #1 - Plan #1 (5-22-12)	2,200.0	2,181.0	133.1	105.9	4.884	SF

Offset Design		Booth 8 Pad Sec.26-T7N-R65W - Booth 3-26 - Wellbore #1 - Plan #1 (5-22-12)											Offset Site Error: 0.0 ft	
Survey Program: 0-MWVD													Offset Well Error: 0.0 ft	
Reference		Offset		Semi Major Axis			Distance							Warning
Measured Depth (ft)	Vertical Depth (ft)	Measured Depth (ft)	Vertical Depth (ft)	Reference (ft)	Offset (ft)	Highside Toolface (°)	Offset Wellbore Centre +N/-S (ft)	+E/-W (ft)	Between Centres (ft)	Between Ellipses (ft)	Minimum Separation (ft)	Separation Factor		
0.0	0.0	0.0	0.0	0.0	0.0	142.66	-12.8	9.7	16.0	16.0	0.00	N/A		
100.0	100.0	100.0	100.0	0.1	0.1	142.66	-12.8	9.7	16.0	15.8	0.22	71.351		
200.0	200.0	200.0	200.0	0.3	0.3	142.66	-12.8	9.7	16.0	15.4	0.67	23.784	CC, ES	
300.0	300.0	300.0	300.0	0.5	0.6	-115.35	-12.8	9.7	16.7	15.6	1.11	15.039		
400.0	399.8	399.8	399.8	0.8	0.8	-129.31	-12.8	9.7	19.5	18.0	1.56	12.549	SF	
500.0	499.5	499.5	499.5	1.0	1.0	-144.28	-12.8	9.7	25.9	23.9	2.02	12.852		
600.0	598.7	598.7	598.7	1.3	1.2	-155.40	-12.8	9.7	36.6	34.1	2.48	14.715		
700.0	697.5	697.5	697.5	1.6	1.5	-162.61	-12.8	9.7	51.2	48.3	2.95	17.372		
800.0	795.6	795.6	795.6	2.0	1.7	-167.22	-12.8	9.7	69.7	66.3	3.41	20.422		
900.0	893.1	893.1	893.1	2.5	1.9	-170.25	-12.8	9.7	91.8	87.9	3.88	23.670		
1,000.0	989.6	993.3	993.3	3.0	2.1	-172.21	-13.3	8.3	115.9	111.6	4.33	26.797		
1,100.0	1,085.3	1,094.7	1,094.6	3.6	2.3	-173.37	-15.3	3.6	140.2	135.5	4.76	29.443		
1,200.0	1,179.8	1,197.1	1,196.5	4.3	2.5	-174.06	-18.7	-4.4	164.5	159.3	5.22	31.549		
1,300.0	1,273.2	1,300.3	1,299.0	5.0	2.8	-174.46	-23.6	-16.0	188.8	183.1	5.69	33.201		
1,400.0	1,365.2	1,404.5	1,401.9	5.8	3.1	-174.67	-30.0	-31.1	213.0	206.9	6.18	34.465		
1,500.0	1,455.8	1,509.7	1,505.1	6.7	3.4	-174.74	-37.9	-49.8	237.1	230.4	6.70	35.399		
1,600.0	1,544.9	1,615.9	1,608.5	7.6	3.8	-174.71	-47.4	-72.2	261.1	253.8	7.24	36.080		
1,658.6	1,596.4	1,672.8	1,663.6	8.2	4.0	-174.68	-52.9	-85.2	275.6	268.0	7.56	36.454		
1,700.0	1,632.5	1,712.8	1,702.4	8.6	4.2	-174.69	-56.8	-94.3	286.3	278.4	7.82	36.614		
1,800.0	1,719.9	1,809.4	1,796.0	9.7	4.6	-174.71	-66.1	-116.4	312.0	303.6	8.45	36.931		
1,900.0	1,807.2	1,906.1	1,889.6	10.7	5.1	-174.72	-75.5	-138.5	337.8	328.7	9.09	37.158		
2,000.0	1,894.5	2,002.7	1,983.2	11.8	5.6	-174.73	-84.8	-160.5	363.6	353.8	9.74	37.321		

CC - Min centre to center distance or convergent point, SF - min separation factor, ES - min ellipse separation

<b>Company:</b>	BAYSWATER EXPLORATION & PRODUCTION	<b>Local Co-ordinate Reference:</b>	Well Booth 31-26
<b>Project:</b>	SEC.26-T7N-R65W	<b>TVD Reference:</b>	WELL @ 4909.0ft (Original Well Elev)
<b>Reference Site:</b>	Booth 8 Pad Sec.26-T7N-R65W	<b>MD Reference:</b>	WELL @ 4909.0ft (Original Well Elev)
<b>Site Error:</b>	0.0ft	<b>North Reference:</b>	True
<b>Reference Well:</b>	Booth 31-26	<b>Survey Calculation Method:</b>	Minimum Curvature
<b>Well Error:</b>	0.0ft	<b>Output errors are at</b>	2.00 sigma
<b>Reference Wellbore</b>	Wellbore #1	<b>Database:</b>	Landmark
<b>Reference Design:</b>	Plan #1 (5-22-12)	<b>Offset TVD Reference:</b>	Offset Datum

Offset Design Booth 8 Pad Sec.26-T7N-R65W - Booth 3-26 - Wellbore #1 - Plan #1 (5-22-12)													Offset Site Error:	0.0 ft
Survey Program: 0-MWD													Offset Well Error:	0.0 ft
Measured Depth (ft)	Vertical Depth (ft)	Measured Depth (ft)	Vertical Depth (ft)	Reference	Offset	Highside Toolface (°)	Offset Wellbore Centre +N/-S (ft)	Offset Wellbore Centre +E/-W (ft)	Between Centres (ft)	Between Ellipses (ft)	Minimum Separation (ft)	Separation Factor	Warning	
2,100.0	1,981.8	2,099.3	2,076.8	12.8	6.0	-174.74	-94.1	-182.6	389.4	379.0	10.40	37.439		
2,200.0	2,069.1	2,195.9	2,170.4	13.9	6.5	-174.75	-103.5	-204.6	415.1	404.1	11.06	37.524		
2,300.0	2,156.4	2,292.5	2,264.0	14.9	7.0	-174.76	-112.8	-226.7	440.9	429.2	11.73	37.584		
2,400.0	2,243.8	2,389.2	2,357.6	16.0	7.5	-174.76	-122.2	-248.8	466.7	454.3	12.40	37.626		
2,500.0	2,331.1	2,485.8	2,451.2	17.1	8.0	-174.77	-131.5	-270.8	492.4	479.4	13.08	37.654		
2,600.0	2,418.4	2,582.4	2,544.8	18.1	8.5	-174.77	-140.8	-292.9	518.2	504.5	13.76	37.672		
2,700.0	2,505.7	2,679.0	2,638.4	19.2	9.0	-174.78	-150.2	-314.9	544.0	529.6	14.44	37.681		
2,800.0	2,593.0	2,775.7	2,732.0	20.3	9.5	-174.78	-159.5	-337.0	569.8	554.6	15.12	37.684		
2,900.0	2,680.3	2,872.3	2,825.6	21.4	10.0	-174.79	-168.8	-359.1	595.5	579.7	15.80	37.683		
3,000.0	2,767.6	2,968.9	2,919.2	22.4	10.5	-174.79	-178.2	-381.1	621.3	604.8	16.49	37.678		
3,100.0	2,855.0	3,065.5	3,012.8	23.5	11.0	-174.79	-187.5	-403.2	647.1	629.9	17.18	37.670		
3,200.0	2,942.3	3,162.1	3,106.4	24.6	11.5	-174.80	-196.8	-425.2	672.9	655.0	17.87	37.659		
3,300.0	3,029.6	3,258.8	3,200.1	25.6	12.0	-174.80	-206.2	-447.3	698.6	680.1	18.56	37.648		
3,400.0	3,116.9	3,355.4	3,293.7	26.7	12.6	-174.80	-215.5	-469.3	724.4	705.2	19.25	37.635		
3,500.0	3,204.2	3,452.0	3,387.3	27.8	13.1	-174.80	-224.9	-491.4	750.2	730.2	19.94	37.621		
3,600.0	3,291.5	3,548.6	3,480.9	28.9	13.6	-174.81	-234.2	-513.5	776.0	755.3	20.63	37.606		
3,700.0	3,378.9	3,645.3	3,574.5	29.9	14.1	-174.81	-243.5	-535.5	801.7	780.4	21.33	37.592		
3,800.0	3,466.2	3,741.9	3,668.1	31.0	14.6	-174.81	-252.9	-557.6	827.5	805.5	22.02	37.576		
3,900.0	3,553.5	3,838.5	3,761.7	32.1	15.1	-174.81	-262.2	-579.6	853.3	830.6	22.72	37.561		
4,000.0	3,640.8	3,935.1	3,855.3	33.1	15.6	-174.81	-271.5	-601.7	879.0	855.6	23.41	37.546		
4,100.0	3,728.1	4,031.7	3,948.9	34.2	16.2	-174.82	-280.9	-623.8	904.8	880.7	24.11	37.530		
4,200.0	3,815.4	4,128.4	4,042.5	35.3	16.7	-174.82	-290.2	-645.8	930.6	905.8	24.81	37.515		
4,300.0	3,902.7	4,225.0	4,136.1	36.4	17.2	-174.82	-299.5	-667.9	956.4	930.9	25.50	37.500		
4,400.0	3,990.1	4,321.6	4,229.7	37.4	17.7	-174.82	-308.9	-689.9	982.1	955.9	26.20	37.485		
4,500.0	4,077.4	4,400.0	4,305.7	38.5	18.1	-174.82	-316.4	-707.8	1,008.1	981.3	26.84	37.556		
4,600.0	4,164.7	4,480.4	4,384.0	39.6	18.4	-174.84	-323.6	-724.7	1,035.9	1,008.4	27.45	37.736		
4,700.0	4,252.0	4,550.5	4,452.6	40.7	18.7	-174.87	-329.2	-737.8	1,066.0	1,038.0	28.02	38.037		
4,800.0	4,339.3	4,619.4	4,520.4	41.7	18.9	-174.92	-334.0	-749.2	1,098.4	1,069.8	28.59	38.420		
4,900.0	4,426.6	4,700.0	4,600.0	42.8	19.1	-174.99	-338.8	-760.6	1,133.1	1,103.9	29.16	38.852		
5,000.0	4,514.0	4,753.8	4,653.4	43.9	19.2	-175.05	-341.5	-767.1	1,169.8	1,140.1	29.68	39.413		
5,100.0	4,601.3	4,819.2	4,718.4	45.0	19.4	-175.13	-344.3	-773.7	1,208.6	1,178.4	30.21	40.008		
5,200.0	4,688.6	4,883.3	4,782.2	46.0	19.5	-175.22	-346.5	-778.8	1,249.6	1,218.8	30.73	40.664		
5,300.0	4,775.9	4,946.1	4,844.9	47.1	19.6	-175.31	-348.1	-782.6	1,292.5	1,261.2	31.24	41.375		
5,400.0	4,863.2	5,000.0	4,898.7	48.2	19.7	-175.39	-349.0	-784.8	1,337.3	1,305.6	31.73	42.145		
5,500.0	4,950.5	5,067.8	4,966.5	49.3	19.8	-175.51	-349.7	-786.3	1,384.0	1,351.8	32.24	42.932		
5,600.0	5,037.8	5,139.2	5,037.8	50.3	19.9	-175.63	-349.7	-786.5	1,432.3	1,399.6	32.74	43.743		
5,700.0	5,125.2	5,226.5	5,125.2	51.4	20.0	-175.77	-349.7	-786.5	1,481.0	1,447.7	33.27	44.513		
5,800.0	5,212.5	5,313.8	5,212.5	52.5	20.1	-175.91	-349.7	-786.5	1,529.6	1,495.8	33.80	45.260		
5,900.0	5,299.8	5,401.1	5,299.8	53.6	20.2	-176.03	-349.7	-786.5	1,578.3	1,544.0	34.33	45.981		
6,000.0	5,387.1	5,488.4	5,387.1	54.6	20.3	-176.15	-349.7	-786.5	1,626.9	1,592.1	34.86	46.675		
6,018.9	5,403.6	5,504.9	5,403.6	54.8	20.3	-176.17	-349.7	-786.5	1,636.1	1,601.2	34.96	46.803		
6,100.0	5,475.0	5,576.3	5,475.0	55.6	20.4	-176.32	-349.7	-786.5	1,674.6	1,639.1	35.47	47.207		
6,200.0	5,564.4	5,665.7	5,564.4	56.4	20.5	-176.48	-349.7	-786.5	1,719.2	1,683.2	36.05	47.684		
6,300.0	5,655.4	5,756.7	5,655.4	57.1	20.6	-176.61	-349.7	-786.5	1,760.7	1,724.1	36.59	48.118		
6,400.0	5,747.7	5,849.0	5,747.7	57.8	20.7	-176.73	-349.7	-786.5	1,799.0	1,761.9	37.08	48.514		
6,500.0	5,841.4	5,942.7	5,841.4	58.4	20.8	-176.84	-349.7	-786.5	1,834.0	1,796.5	37.52	48.878		
6,600.0	5,936.2	6,037.5	5,936.2	58.9	21.0	-176.93	-349.7	-786.5	1,865.8	1,827.9	37.91	49.211		
6,700.0	6,032.0	6,133.3	6,032.0	59.4	21.1	-177.00	-349.7	-786.5	1,894.3	1,856.0	38.25	49.517		
6,800.0	6,128.8	6,230.1	6,128.8	59.9	21.2	-177.07	-349.7	-786.5	1,919.4	1,880.8	38.54	49.799		
6,900.0	6,226.4	6,327.7	6,226.4	60.2	21.3	-177.12	-349.7	-786.5	1,941.1	1,902.3	38.78	50.059		
7,000.0	6,324.7	6,426.0	6,324.7	60.5	21.5	-177.17	-349.7	-786.5	1,959.3	1,920.4	38.95	50.298		

CC - Min centre to center distance or convergent point, SF - min separation factor, ES - min ellipse separation

<b>Company:</b>	BAYSWATER EXPLORATION & PRODUCTION	<b>Local Co-ordinate Reference:</b>	Well Booth 31-26
<b>Project:</b>	SEC.26-T7N-R65W	<b>TVD Reference:</b>	WELL @ 4909.0ft (Original Well Elev)
<b>Reference Site:</b>	Booth 8 Pad Sec.26-T7N-R65W	<b>MD Reference:</b>	WELL @ 4909.0ft (Original Well Elev)
<b>Site Error:</b>	0.0ft	<b>North Reference:</b>	True
<b>Reference Well:</b>	Booth 31-26	<b>Survey Calculation Method:</b>	Minimum Curvature
<b>Well Error:</b>	0.0ft	<b>Output errors are at</b>	2.00 sigma
<b>Reference Wellbore</b>	Wellbore #1	<b>Database:</b>	Landmark
<b>Reference Design:</b>	Plan #1 (5-22-12)	<b>Offset TVD Reference:</b>	Offset Datum

<b>Offset Design</b> Booth 8 Pad Sec.26-T7N-R65W - Booth 3-26 - Wellbore #1 - Plan #1 (5-22-12)													<b>Offset Site Error:</b>	0.0 ft
Survey Program: 0-MWD													<b>Offset Well Error:</b>	0.0 ft
Measured Depth (ft)	Vertical Depth (ft)	Measured Depth (ft)	Vertical Depth (ft)	Semi Major Axis		Highside Toolface (°)	Offset Wellbore Centre		Distance		Minimum Separation (ft)	Separation Factor	Warning	
Reference	Offset	Reference	Offset	(ft)	(ft)		+N/-S (ft)	+E/-W (ft)	Between Centres (ft)	Between Ellipses (ft)				
7,100.0	6,423.6	6,524.9	6,423.6	60.8	21.6	-177.21	-349.7	-786.5	1,974.2	1,935.1	39.08	50.518		
7,200.0	6,522.9	6,624.3	6,522.9	61.0	21.7	-177.23	-349.7	-786.5	1,985.6	1,946.4	39.15	50.720		
7,300.0	6,622.6	6,723.9	6,622.6	61.1	21.9	-177.25	-349.7	-786.5	1,993.5	1,954.3	39.16	50.904		
7,400.0	6,722.5	6,823.8	6,722.5	61.2	22.0	-177.26	-349.7	-786.5	1,998.0	1,958.8	39.12	51.071		
7,477.5	6,800.0	6,901.3	6,800.0	61.3	22.1	75.12	-349.7	-786.5	1,999.0	1,959.9	39.06	51.183		
7,500.0	6,822.5	6,923.8	6,822.5	61.3	22.2	75.12	-349.7	-786.5	1,999.0	1,959.9	39.13	51.092		
7,600.0	6,922.5	7,023.8	6,922.5	61.4	22.3	75.12	-349.7	-786.5	1,999.0	1,959.6	39.43	50.695		
7,700.0	7,022.5	7,123.8	7,022.5	61.4	22.4	75.12	-349.7	-786.5	1,999.0	1,959.3	39.74	50.301		
7,800.0	7,122.5	7,223.8	7,122.5	61.5	22.6	75.12	-349.7	-786.5	1,999.0	1,958.9	40.05	49.911		
7,900.0	7,222.5	7,323.8	7,222.5	61.5	22.7	75.12	-349.7	-786.5	1,999.0	1,958.6	40.37	49.523		
8,000.0	7,322.5	7,423.8	7,322.5	61.6	22.9	75.12	-349.7	-786.5	1,999.0	1,958.3	40.68	49.139		
8,028.0	7,350.5	7,451.8	7,350.5	61.6	22.9	75.12	-349.7	-786.5	1,999.0	1,958.2	40.77	49.032		
8,052.5	7,375.0	7,461.3	7,360.0	61.6	22.9	75.12	-349.7	-786.5	1,999.1	1,958.2	40.82	48.975		

<b>Company:</b>	BAYSWATER EXPLORATION & PRODUCTION	<b>Local Co-ordinate Reference:</b>	Well Booth 31-26
<b>Project:</b>	SEC.26-T7N-R65W	<b>TVD Reference:</b>	WELL @ 4909.0ft (Original Well Elev)
<b>Reference Site:</b>	Booth 8 Pad Sec.26-T7N-R65W	<b>MD Reference:</b>	WELL @ 4909.0ft (Original Well Elev)
<b>Site Error:</b>	0.0ft	<b>North Reference:</b>	True
<b>Reference Well:</b>	Booth 31-26	<b>Survey Calculation Method:</b>	Minimum Curvature
<b>Well Error:</b>	0.0ft	<b>Output errors are at</b>	2.00 sigma
<b>Reference Wellbore</b>	Wellbore #1	<b>Database:</b>	Landmark
<b>Reference Design:</b>	Plan #1 (5-22-12)	<b>Offset TVD Reference:</b>	Offset Datum

Offset Design Booth 8 Pad Sec.26-T7N-R65W - Booth 4-26 - Wellbore #1 - Plan #1 (5-22-12)													Offset Site Error:	0.0 ft
Survey Program: 0-MWD													Offset Well Error:	0.0 ft
Measured Depth (ft)	Vertical Depth (ft)	Measured Depth (ft)	Vertical Depth (ft)	Reference	Offset	Semi Major Axis (ft)	Highside Toolface (°)	Offset Wellbore Centre +N/-S (ft)	+E/-W (ft)	Between Centres (ft)	Between Ellipses (ft)	Minimum Separation (ft)	Separation Factor	Warning
0.0	0.0	0.0	0.0	0.0	0.0	-35.76		13.1	-9.4	16.2	16.2	0.00	N/A	
100.0	100.0	100.0	100.0	0.1	0.1	-35.76		13.1	-9.4	16.2	15.9	0.22	71.931 CC, ES	
200.0	200.0	199.7	199.7	0.3	0.3	-40.85		12.9	-11.2	17.1	16.4	0.67	25.601	
300.0	300.0	299.2	299.1	0.5	0.6	58.76		12.3	-16.3	19.5	18.4	1.10	17.662	
400.0	399.8	398.6	398.1	0.8	0.8	53.77		11.3	-24.9	22.7	21.1	1.57	14.505	
500.0	499.5	497.9	496.7	1.0	1.1	51.06		9.9	-36.9	26.5	24.4	2.07	12.811	
600.0	598.7	597.1	594.6	1.3	1.5	49.93		8.1	-52.2	30.8	28.1	2.62	11.737	
700.0	697.5	696.1	691.8	1.6	1.9	49.85		5.9	-70.8	35.5	32.2	3.24	10.951	
800.0	795.6	794.9	788.1	2.0	2.3	50.46		3.4	-92.8	40.6	36.7	3.94	10.309	
900.0	893.1	893.6	883.5	2.5	2.8	51.49		0.4	-117.9	46.2	41.4	4.74	9.746	
1,000.0	989.6	992.2	977.8	3.0	3.4	52.79		-2.9	-146.3	52.2	46.5	5.65	9.235	
1,100.0	1,085.3	1,090.6	1,071.0	3.6	4.1	54.24		-6.6	-177.9	58.7	52.0	6.69	8.765	
1,200.0	1,179.8	1,188.8	1,162.8	4.3	4.8	55.75		-10.7	-212.5	65.6	57.7	7.87	8.332	
1,300.0	1,273.2	1,286.9	1,253.2	5.0	5.6	57.28		-15.1	-250.2	73.1	63.9	9.20	7.939	
1,400.0	1,365.2	1,385.8	1,343.3	5.8	6.4	59.12		-19.9	-290.7	80.6	69.9	10.71	7.528	
1,500.0	1,455.8	1,485.5	1,434.0	6.7	7.3	62.50		-24.7	-331.9	86.8	74.3	12.48	6.954	
1,600.0	1,544.9	1,585.1	1,524.5	7.6	8.2	67.40		-29.5	-373.0	91.9	77.3	14.54	6.320	
1,658.6	1,596.4	1,643.3	1,577.5	8.2	8.7	70.93		-32.3	-397.0	94.6	78.7	15.86	5.966	
1,700.0	1,632.5	1,684.4	1,614.9	8.6	9.1	73.56		-34.3	-414.0	96.6	79.8	16.81	5.746	
1,800.0	1,719.9	1,783.7	1,705.2	9.7	10.0	79.47		-39.1	-455.0	102.3	83.2	19.08	5.361	
1,900.0	1,807.2	1,883.0	1,795.6	10.7	10.8	84.71		-43.9	-496.0	108.9	87.7	21.26	5.123	
2,000.0	1,894.5	1,982.3	1,885.9	11.8	11.7	89.32		-48.7	-537.0	116.4	93.0	23.35	4.984	
2,100.0	1,981.8	2,081.7	1,976.2	12.8	12.6	93.36		-53.6	-578.0	124.5	99.1	25.34	4.912	
2,200.0	2,069.1	2,181.0	2,066.5	13.9	13.5	96.89		-58.4	-619.0	133.1	105.9	27.26	4.884 SF	
2,300.0	2,156.4	2,280.3	2,156.9	14.9	14.4	99.98		-63.2	-660.0	142.2	113.1	29.10	4.888	
2,400.0	2,243.8	2,379.6	2,247.2	16.0	15.3	102.70		-68.0	-701.0	151.7	120.8	30.88	4.911	
2,500.0	2,331.1	2,478.9	2,337.5	17.1	16.2	105.09		-72.8	-742.0	161.4	128.8	32.62	4.949	
2,600.0	2,418.4	2,578.2	2,427.8	18.1	17.1	107.21		-77.6	-782.9	171.4	137.1	34.32	4.996	
2,700.0	2,505.7	2,677.5	2,518.2	19.2	18.0	109.09		-82.4	-823.9	181.7	145.7	35.99	5.048	
2,800.0	2,593.0	2,776.8	2,608.5	20.3	18.9	110.78		-87.2	-864.9	192.0	154.4	37.63	5.104	
2,900.0	2,680.3	2,876.1	2,698.8	21.4	19.8	112.29		-92.0	-905.9	202.6	163.3	39.25	5.162	
3,000.0	2,767.6	2,975.4	2,789.1	22.4	20.7	113.65		-96.8	-946.9	213.2	172.4	40.85	5.220	
3,100.0	2,855.0	3,074.7	2,879.5	23.5	21.6	114.88		-101.6	-987.9	224.0	181.6	42.44	5.278	
3,200.0	2,942.3	3,174.1	2,969.8	24.6	22.5	115.99		-106.4	-1,028.9	234.9	190.9	44.02	5.336	
3,300.0	3,029.6	3,273.4	3,060.1	25.6	23.4	117.01		-111.2	-1,069.9	245.8	200.2	45.59	5.392	
3,400.0	3,116.9	3,372.7	3,150.4	26.7	24.3	117.94		-116.0	-1,110.9	256.8	209.7	47.15	5.447	
3,500.0	3,204.2	3,472.0	3,240.8	27.8	25.2	118.79		-120.9	-1,151.9	267.9	219.2	48.70	5.501	
3,600.0	3,291.5	3,571.3	3,331.1	28.9	26.1	119.58		-125.7	-1,192.9	279.0	228.8	50.25	5.553	
3,700.0	3,378.9	3,670.6	3,421.4	29.9	27.0	120.31		-130.5	-1,233.9	290.2	238.4	51.79	5.603	
3,800.0	3,466.2	3,769.9	3,511.7	31.0	27.9	120.98		-135.3	-1,274.9	301.4	248.1	53.33	5.652	
3,900.0	3,553.5	3,869.2	3,602.1	32.1	28.8	121.60		-140.1	-1,315.9	312.7	257.8	54.86	5.699	
4,000.0	3,640.8	3,968.5	3,692.4	33.1	29.7	122.18		-144.9	-1,356.9	324.0	267.6	56.39	5.744	
4,100.0	3,728.1	4,067.8	3,782.7	34.2	30.6	122.73		-149.7	-1,397.9	335.3	277.4	57.92	5.788	
4,200.0	3,815.4	4,167.1	3,873.0	35.3	31.5	123.23		-154.5	-1,438.9	346.6	287.2	59.45	5.830	
4,300.0	3,902.7	4,266.4	3,963.4	36.4	32.4	123.71		-159.3	-1,479.8	358.0	297.0	60.98	5.871	
4,400.0	3,990.1	4,365.8	4,053.7	37.4	33.3	124.15		-164.1	-1,520.8	369.4	306.9	62.50	5.910	
4,500.0	4,077.4	4,465.1	4,144.0	38.5	34.2	124.57		-168.9	-1,561.8	380.8	316.8	64.02	5.948	
4,600.0	4,164.7	4,564.4	4,234.3	39.6	35.1	124.96		-173.7	-1,602.8	392.2	326.7	65.54	5.984	
4,700.0	4,252.0	4,663.7	4,324.7	40.7	36.0	125.33		-178.5	-1,643.8	403.7	336.6	67.06	6.020	
4,800.0	4,339.3	4,763.0	4,415.0	41.7	36.9	125.68		-183.4	-1,684.8	415.2	346.6	68.58	6.053	
4,900.0	4,426.6	4,862.3	4,505.3	42.8	37.8	126.02		-188.2	-1,725.8	426.7	356.6	70.10	6.086	

CC - Min centre to center distance or convergent point, SF - min separation factor, ES - min ellipse separation

<b>Company:</b>	BAYSWATER EXPLORATION & PRODUCTION	<b>Local Co-ordinate Reference:</b>	Well Booth 31-26
<b>Project:</b>	SEC.26-T7N-R65W	<b>TVD Reference:</b>	WELL @ 4909.0ft (Original Well Elev)
<b>Reference Site:</b>	Booth 8 Pad Sec.26-T7N-R65W	<b>MD Reference:</b>	WELL @ 4909.0ft (Original Well Elev)
<b>Site Error:</b>	0.0ft	<b>North Reference:</b>	True
<b>Reference Well:</b>	Booth 31-26	<b>Survey Calculation Method:</b>	Minimum Curvature
<b>Well Error:</b>	0.0ft	<b>Output errors are at</b>	2.00 sigma
<b>Reference Wellbore</b>	Wellbore #1	<b>Database:</b>	Landmark
<b>Reference Design:</b>	Plan #1 (5-22-12)	<b>Offset TVD Reference:</b>	Offset Datum

Offset Design Booth 8 Pad Sec.26-T7N-R65W - Booth 4-26 - Wellbore #1 - Plan #1 (5-22-12)													Offset Site Error:	0.0 ft
Survey Program: 0-MWD													Offset Well Error:	0.0 ft
Measured Depth (ft)	Vertical Depth (ft)	Measured Depth (ft)	Vertical Depth (ft)	Reference	Offset	Semi Major Axis	Highside Toolface (°)	Offset Wellbore Centre +N/-S (ft)	Offset Wellbore Centre +E/-W (ft)	Distance Between Centres (ft)	Distance Between Ellipses (ft)	Minimum Separation (ft)	Separation Factor	Warning
5,000.0	4,514.0	4,961.6	4,595.6	43.9	38.7	126.33	126.33	-193.0	-1,766.8	438.1	366.5	71.62	6.118	
5,100.0	4,601.3	5,060.9	4,686.0	45.0	39.6	126.63	126.63	-197.8	-1,807.8	449.7	376.5	73.14	6.148	
5,200.0	4,688.6	5,160.2	4,776.3	46.0	40.5	126.91	126.91	-202.6	-1,848.8	461.2	386.5	74.65	6.178	
5,300.0	4,775.9	5,255.1	4,862.8	47.1	41.3	127.24	127.24	-207.1	-1,887.4	473.0	397.0	76.00	6.224	
5,400.0	4,863.2	5,346.9	4,947.6	48.2	41.9	127.83	127.83	-211.2	-1,922.2	486.2	409.2	77.03	6.312	
5,500.0	4,950.5	5,437.9	5,032.8	49.3	42.4	128.68	128.68	-214.9	-1,954.1	501.1	423.3	77.81	6.440	
5,600.0	5,037.8	5,528.1	5,118.2	50.3	42.9	129.75	129.75	-218.3	-1,983.0	517.6	439.2	78.33	6.607	
5,700.0	5,125.2	5,617.2	5,203.3	51.4	43.4	131.01	131.01	-221.4	-2,008.9	535.9	457.3	78.62	6.816	
5,800.0	5,212.5	5,705.0	5,288.1	52.5	43.8	132.41	132.41	-224.1	-2,031.9	556.1	477.4	78.69	7.067	
5,900.0	5,299.8	5,791.5	5,372.2	53.6	44.1	133.93	133.93	-226.4	-2,052.0	578.4	499.8	78.56	7.362	
6,000.0	5,387.1	5,876.6	5,455.4	54.6	44.4	135.52	135.52	-228.4	-2,069.3	602.8	524.5	78.24	7.704	
6,018.9	5,403.6	5,892.4	5,471.0	54.8	44.5	135.83	135.83	-228.8	-2,072.3	607.6	529.5	78.17	7.773	
6,100.0	5,475.0	5,960.3	5,537.9	55.6	44.7	137.40	137.40	-230.2	-2,083.9	628.6	551.1	77.59	8.102	
6,200.0	5,564.4	6,043.5	5,620.2	56.4	44.9	139.19	139.19	-231.6	-2,096.1	654.3	577.5	76.80	8.520	
6,300.0	5,655.4	6,126.1	5,702.2	57.1	45.1	140.85	140.85	-232.7	-2,105.8	679.7	603.7	75.99	8.944	
6,400.0	5,747.7	6,208.2	5,783.9	57.8	45.2	142.39	142.39	-233.6	-2,113.1	704.7	629.5	75.17	9.375	
6,500.0	5,841.4	6,289.7	5,865.3	58.4	45.3	143.81	143.81	-234.2	-2,118.0	729.3	654.9	74.33	9.812	
6,600.0	5,936.2	6,370.7	5,946.2	58.9	45.4	145.15	145.15	-234.5	-2,120.7	753.3	679.9	73.46	10.255	
6,700.0	6,032.0	6,456.5	6,032.0	59.4	45.4	146.45	146.45	-234.5	-2,121.2	776.8	704.2	72.53	10.710	
6,800.0	6,128.8	6,553.3	6,128.8	59.9	45.5	147.67	147.67	-234.5	-2,121.2	798.0	726.4	71.59	11.147	
6,900.0	6,226.4	6,650.9	6,226.4	60.2	45.6	148.67	148.67	-234.5	-2,121.2	816.6	745.8	70.81	11.533	
7,000.0	6,324.7	6,749.2	6,324.7	60.5	45.6	149.49	149.49	-234.5	-2,121.2	832.4	762.2	70.16	11.865	
7,100.0	6,423.6	6,848.1	6,423.6	60.8	45.7	150.13	150.13	-234.5	-2,121.2	845.3	775.7	69.62	12.141	
7,200.0	6,522.9	6,947.4	6,522.9	61.0	45.8	150.61	150.61	-234.5	-2,121.2	855.2	786.0	69.20	12.359	
7,300.0	6,622.6	7,047.1	6,622.6	61.1	45.8	150.93	150.93	-234.5	-2,121.2	862.1	793.3	68.88	12.517	
7,400.0	6,722.5	7,147.0	6,722.5	61.2	45.9	151.11	151.11	-234.5	-2,121.2	866.0	797.4	68.66	12.614	
7,477.5	6,800.0	7,224.5	6,800.0	61.3	45.9	43.55	43.55	-234.5	-2,121.2	867.0	798.4	68.55	12.646	
7,500.0	6,822.5	7,247.0	6,822.5	61.3	46.0	43.55	43.55	-234.5	-2,121.2	867.0	798.4	68.59	12.639	
7,600.0	6,922.5	7,347.0	6,922.5	61.4	46.0	43.55	43.55	-234.5	-2,121.2	867.0	798.2	68.77	12.607	
7,700.0	7,022.5	7,447.0	7,022.5	61.4	46.1	43.55	43.55	-234.5	-2,121.2	867.0	798.0	68.94	12.575	
7,800.0	7,122.5	7,547.0	7,122.5	61.5	46.2	43.55	43.55	-234.5	-2,121.2	867.0	797.8	69.12	12.543	
7,900.0	7,222.5	7,647.0	7,222.5	61.5	46.3	43.55	43.55	-234.5	-2,121.2	867.0	797.7	69.30	12.510	
8,000.0	7,322.5	7,747.0	7,322.5	61.6	46.3	43.55	43.55	-234.5	-2,121.2	867.0	797.5	69.49	12.477	
8,052.5	7,375.0	7,799.5	7,375.0	61.6	46.4	43.55	43.55	-234.5	-2,121.2	867.0	797.4	69.58	12.459	

<b>Company:</b>	BAYSWATER EXPLORATION & PRODUCTION	<b>Local Co-ordinate Reference:</b>	Well Booth 31-26
<b>Project:</b>	SEC.26-T7N-R65W	<b>TVD Reference:</b>	WELL @ 4909.0ft (Original Well Elev)
<b>Reference Site:</b>	Booth 8 Pad Sec.26-T7N-R65W	<b>MD Reference:</b>	WELL @ 4909.0ft (Original Well Elev)
<b>Site Error:</b>	0.0ft	<b>North Reference:</b>	True
<b>Reference Well:</b>	Booth 31-26	<b>Survey Calculation Method:</b>	Minimum Curvature
<b>Well Error:</b>	0.0ft	<b>Output errors are at</b>	2.00 sigma
<b>Reference Wellbore</b>	Wellbore #1	<b>Database:</b>	Landmark
<b>Reference Design:</b>	Plan #1 (5-22-12)	<b>Offset TVD Reference:</b>	Offset Datum

Reference Depths are relative to WELL @ 4909.0ft (Original Well Elev) Coordinates are relative to: Booth 31-26  
Offset Depths are relative to Offset Datum  
Central Meridian is -105.500000 °  
Coordinate System is US State Plane 1983, Colorado Northern Zone  
Grid Convergence at Surface is: 0.56°



<b>Company:</b>	BAYSWATER EXPLORATION & PRODUCTION	<b>Local Co-ordinate Reference:</b>	Well Booth 31-26
<b>Project:</b>	SEC.26-T7N-R65W	<b>TVD Reference:</b>	WELL @ 4909.0ft (Original Well Elev)
<b>Reference Site:</b>	Booth 8 Pad Sec.26-T7N-R65W	<b>MD Reference:</b>	WELL @ 4909.0ft (Original Well Elev)
<b>Site Error:</b>	0.0ft	<b>North Reference:</b>	True
<b>Reference Well:</b>	Booth 31-26	<b>Survey Calculation Method:</b>	Minimum Curvature
<b>Well Error:</b>	0.0ft	<b>Output errors are at</b>	2.00 sigma
<b>Reference Wellbore</b>	Wellbore #1	<b>Database:</b>	Landmark
<b>Reference Design:</b>	Plan #1 (5-22-12)	<b>Offset TVD Reference:</b>	Offset Datum

Reference Depths are relative to WELL @ 4909.0ft (Original Well Elev) Coordinates are relative to: Booth 31-26  
Offset Depths are relative to Offset Datum  
Central Meridian is -105.500000 °  
Coordinate System is US State Plane 1983, Colorado Northern Zone  
Grid Convergence at Surface is: 0.56°

