

The Road to Excellence Starts with Safety

Sold To #: 300721		Ship To #: 2890013		Quote #:		Sales Order #: 9052891	
Customer: WILLIAMS PRODUCTION RMT INC - EBUS				Customer Rep: Klatt, Brian			
Well Name: RWF		Well #: 342-36		API/UWI #: 05-045-20747			
Field: Rulison		City (SAP): RIFLE		County/Parish: Garfield		State: Colorado	
Lat: N 39.485 deg. OR N 39 deg. 29 min. 7.523 secs.				Long: W 107.836 deg. OR W -108 deg. 9 min. 52.088 secs.			
Contractor: NABORS		Rig/Platform Name/Num: NABORS 576					
Job Purpose: Cement Surface Casing							
Well Type: Development Well				Job Type: Cement Surface Casing			
Sales Person: MAYO, MARK		Srcv Supervisor: STILLSON, ERIC		MBU ID Emp #: 393789			
Job Personnel							
HES Emp Name	Exp Hrs	Emp #	HES Emp Name	Exp Hrs	Emp #	HES Emp Name	Exp Hrs
HARDRICK, RAYMOND Frank	5	391324	MUHLESTEIN, RYAN Herrick	5	453609	STILLSON, ERIC W	5
WEAVER, CARLTON Russell	5	457698					
Equipment							
HES Unit #	Distance-1 way	HES Unit #	Distance-1 way	HES Unit #	Distance-1 way	HES Unit #	Distance-1 way
10025118	60 mile	10616651C	60 mile	10741259	60 mile	10951245	60 mile
10995025	60 mile						
Job Hours							
Date	On Location Hours	Operating Hours	Date	On Location Hours	Operating Hours	Date	On Location Hours
11-28-11	5	1					
TOTAL		Total is the sum of each column separately					
Job				Job Times			
Formation Name				Date	Time	Time Zone	
Formation Depth (MD)	Top	Bottom		Called Out	28 - Nov - 2011	01:00	MST
Form Type	BHST			On Location	28 - Nov - 2011	06:00	MST
Job depth MD	1170. ft		Job Depth TVD	1170. ft	Job Started	28 - Nov - 2011	09:06
Water Depth	Wk Ht Above Floor			4. ft	Job Completed	28 - Nov - 2011	10:00
Perforation Depth (MD)	From	To		Departed Loc	28 - Nov - 2011	11:30	MST
Well Data							
Description	New / Used	Max pressure psig	Size in	ID in	Weight lbm/ft	Thread	Grade
OPEN HOLE SECTION				13.5			
SURFACE CASING	Unknown		9.625	9.001	32.3		
Sales/Rental/3rd Party (HES)							
Description				Qty	Qty uom	Depth	Supplier
PLUG,CMTG,TOP,9 5/8,HWE,8.16 MIN/9.06 MA				1	EA		
Tools and Accessories							
Type	Size	Qty	Make	Depth	Type	Size	Qty
Guide Shoe					Packer		
Float Shoe					Bridge Plug		
Float Collar					Retainer		
Insert Float							
Stage Tool							
Miscellaneous Materials							
Gelling Agt		Conc		Surfactant		Conc	
Treatment Fld		Conc		Inhibitor		Conc	
				Acid Type		Qty	
				Sand Type		Size	
						Conc	%
						Qty	

Fluid Data									
Stage/Plug #: 1									
Fluid #	Stage Type	Fluid Name	Qty	Qty uom	Mixing Density lbm/gal	Yield ft ³ /sk	Mix Fluid Gal/sk	Rate bbl/min	Total Mix Fluid Gal/sk
1	Water Spacer		20.00	bbl	8.34	.0	.0	4	
2	Lead Cement	VERSACEM (TM) SYSTEM (452010)	160.0	sacks	12.3	2.38	13.75	8	13.75
		13.75 Gal FRESH WATER							
3	Tail Cement	VERSACEM (TM) SYSTEM (452010)	160.0	sacks	12.8	2.11	11.75	8	11.75
		11.75 Gal FRESH WATER							
4	Displacement Fluid		87.00	bbl	8.34	.0	.0	10.0	
Calculated Values		Pressures		Volumes					
Displacement	87.5	Shut In: Instant		Lost Returns	0	Cement Slurry	128	Pad	
Top Of Cement	SURFACE	5 Min		Cement Returns	18	Actual Displacement	87	Treatment	
Frac Gradient		15 Min		Spacers	20	Load and Breakdown		Total Job	
Rates									
Circulating		Mixing	8	Displacement	10	Avg. Job	8		
Cement Left In Pipe	Amount	43.5 ft	Reason	Shoe Joint					
Frac Ring # 1 @	ID	Frac ring # 2 @	ID	Frac Ring # 3 @	ID	Frac Ring # 4 @	ID		
The Information Stated Herein Is Correct				Customer Representative Signature					

The Road to Excellence Starts with Safety

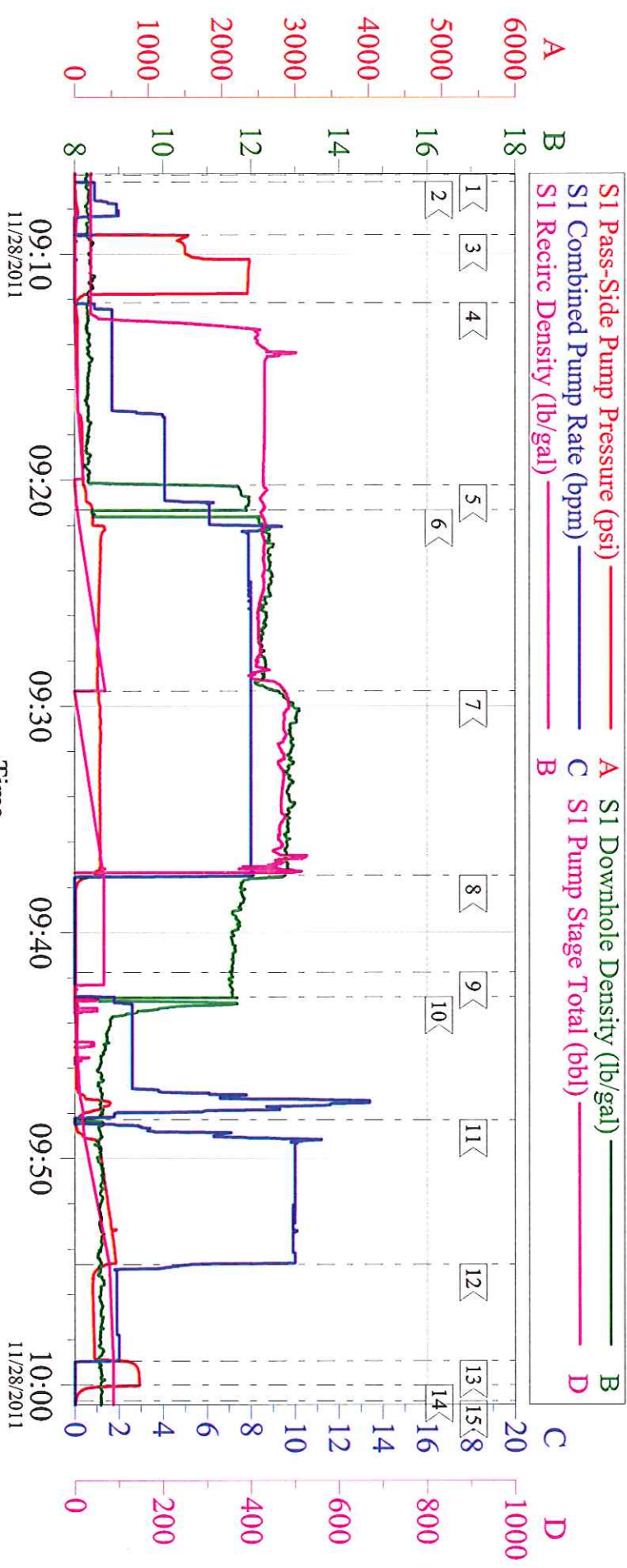
Sold To #: 300721	Ship To #: 2890013	Quote #:	Sales Order #: 9052891
Customer: WILLIAMS PRODUCTION RMT INC - EBUS	Customer Rep: Klatt, Brian		
Well Name: RWF	Well #: 342-36	API/UWI #: 05-045-20747	
Field: Rulison	City (SAP): RIFLE	County/Parish: Garfield	State: Colorado
Legal Description:			
Lat: N 39.485 deg. OR N 39 deg. 29 min. 7.523 secs.		Long: W 107.836 deg. OR W -108 deg. 9 min. 52.088 secs.	
Contractor: NABORS	Rig/Platform Name/Num: NABORS 576		
Job Purpose: Cement Surface Casing	Ticket Amount:		
Well Type: Development Well	Job Type: Cement Surface Casing		
Sales Person: MAYO, MARK	Srvc Supervisor: STILLSON, ERIC	MBU ID Emp #: 393789	

Activity Description	Date/Time	Cht #	Rate bbl/min	Volume bbl		Pressure psig		Comments
				Stage	Total	Tubing	Casing	
Call Out	11/28/2011 01:00							
Pre-Convoy Safety Meeting	11/28/2011 03:30							ENTIRE CREW, OBSERVE ALL SAFE DRIVING PROCEDURES
Arrive At Loc	11/28/2011 06:00							ARRIVED EARLY. RIG RUNNING CASING.
Assessment Of Location Safety Meeting	11/28/2011 06:30							REVIEWED EMERGENCY PLAN, ASSESSED WORK AREA AND SPOTTED EQUIPMENT.
Pre-Rig Up Safety Meeting	11/28/2011 06:55							ENTIRE CREW, WALKED THROUGH RIG UP LOOKING FOR HAZARDS.
Rig-Up Equipment	11/28/2011 07:00							1 PICK UP, 1 HT400 PUMP TRUCK, 1 660 BULK CEMENT TRUCK, 1 QUICK LATCH HEAD WITH PLUG,
Pre-Job Safety Meeting	11/28/2011 08:45							ENTIRE CREW, CO REP AND RIG CREW.
Start Job	11/28/2011 09:06							TD 1170 TP 1155 SJ 43.52 FC 1111.48 MW 11 PPG, 9 5/8 32.3# CASING IN 13 1/2 HOLE.
Pump Water	11/28/2011 09:06		2	2			45.0	FILL LINES BEFORE TESTING
Pressure Test	11/28/2011 09:09		0.5	0.1			2400.0	HELD PRESSURE FOR 2 MIN, PRESSURE HELD, NO LEAKS.

Activity Description	Date/Time	Cht #	Rate bbl/min	Volume bbl		Pressure psig		Comments
				Stage	Total	Tubing	Casing	
Pump Spacer 1	11/28/2011 09:12		4	20			115.0	FRESH WATER, PUMPED AT 2 BPM UNTIL CEMENT TUB UP TO WEIGHT AND WEIGHED WITH SCALES, SPED RATE TO 4 BPM AT 10 BBLs GONE.
Pump Lead Cement	11/28/2011 09:20		8	68			355.0	160 SKS VERSACEM, 12.3 PPG, 2.38 CUFT/SK, 13.75 GAL/SK. AT START OF LEAD DOWNHOLE WAS COMING UP SLOWLY SO WE AUTOCALED IT BUT OPERATOR AUTOCALED TO WATER BY MISTAKE.
Pump Tail Cement	11/28/2011 09:29		8	60			350.0	160 SKS VERSACEM, 12.8 PPG, 2.11 CUFT/SK, 11.75 GAL/SK.
Shutdown	11/28/2011 09:37							
Drop Top Plug	11/28/2011 09:41							VARIFIED PLUG LEFT CONTAINER.
Pump Displacement	11/28/2011 09:42		10	87.5			570.0	FRESH WATER, WHEN SPED TO 10 BPM HAD TO SLOW TO A CRAWL AT 19 BBLs GONE DUE WATER RATE, RESUMED 10 BPM, CEMENT TO SURFACE AT 69 BBLs GONE, 18 BBLs OF CEMENT TO SURFACE. USED 40 LBS SUGAR.
Slow Rate	11/28/2011 09:54		2	77			280.0	SLOWED RATE TO 2 BPM TO BUMP PLUG.
Bump Plug	11/28/2011 09:58		2	87			870.0	PLUG LANDED AT 280 PSI, BUMPED UP TO 870 PSI AND HELD FOR 2 MIN PER CO REP.

Activity Description	Date/Time	Cht #	Rate bbl/ min	Volume bbl		Pressure psig		Comments
				Stage	Total	Tubing	Casing	
Check Floats	11/28/2011 10:00							FLOATS HELD, WHEN RELEASED PRESSURE GOT 1/2 BBL OF WATER BACK TO TRUCK.
End Job	11/28/2011 10:01							GOOD RETURNS THROUGHOUT, DID NOT RECIPROCATATE PIPE.
Post-Job Safety Meeting (Pre Rig-Down)	11/28/2011 10:05							ENTIRE CREW
Rig-Down Equipment	11/28/2011 10:30							
Pre-Convoy Safety Meeting	11/28/2011 11:25							ENTIRE CREW, OBSERVE ALL SAFE DRIVING PROCEDURES
Crew Leave Location	11/28/2011 11:30							THANK YOU FOR USING HALLIBURTON, ERIC STILLSON AND CREW.

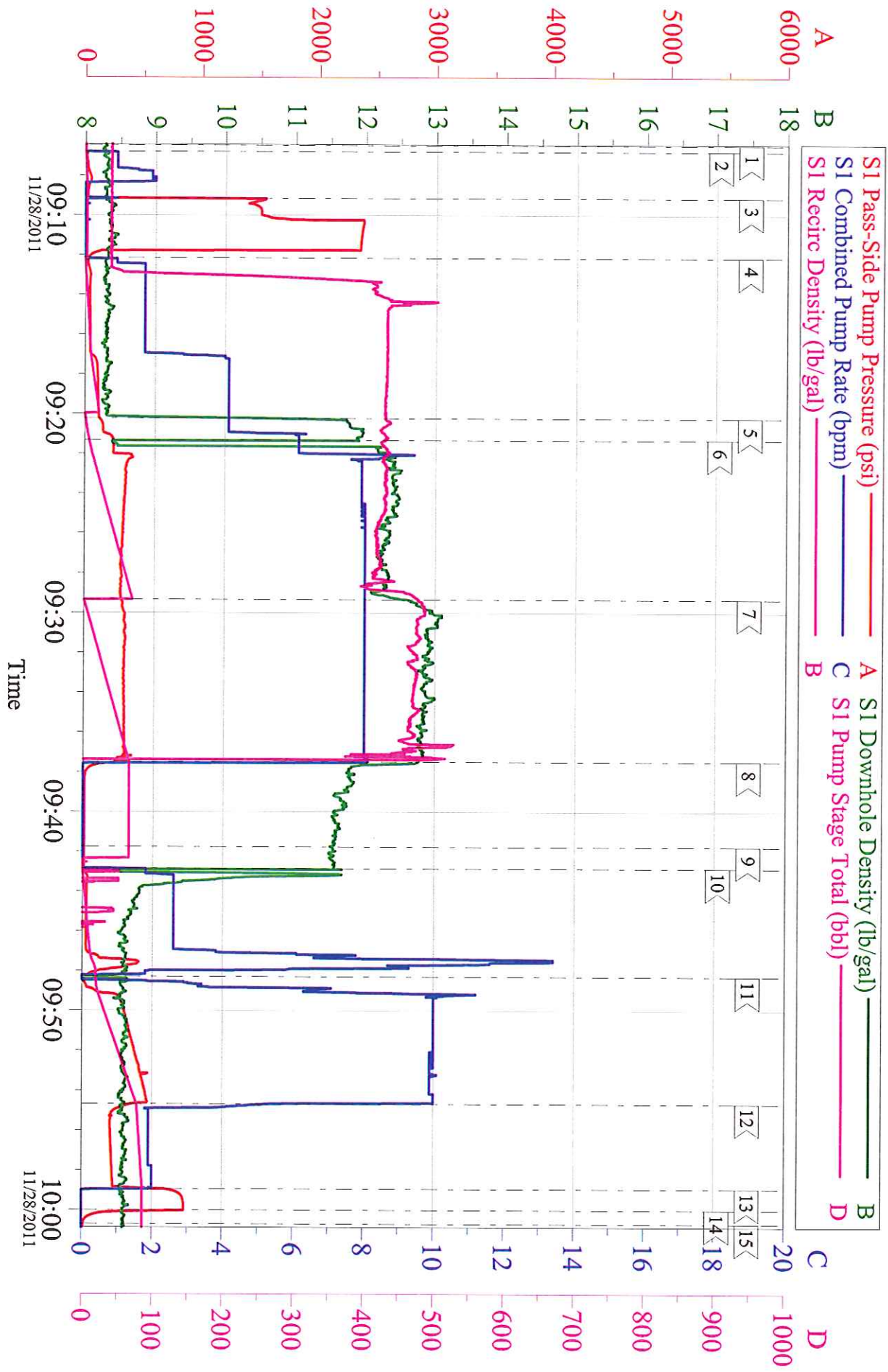
WILLIAMS - RWF 342-36 9 5/8 SURFACE



Local Event Log					
1	START JOB	09:06:29	2	FILL LINES	09:06:48
3	TEST LINES	09:09:08	4	PUMP WATER SPACER	09:12:09
5	PUMP LEAD CEMENT	09:20:13	6	AUTOLOCAL TO H2O BY MISTAKE	09:21:19
7	PUMP TAIL CEMENT	09:29:19	8	SHUTDOWN	09:37:29
9	DROP PLUG	09:41:46	10	PUMP DISPLACEMENT	09:42:52
11	LOST PRIME ON 4X4	09:48:18	12	SLOW RATE	09:54:40
13	BUMP PLUG	09:58:57	14	CHECK FLOATS	10:00:01
15	END JOB	10:00:43			

Customer: WILLIAMS	Job Date: 28-Nov-2011	Sales Order #: 9052891
Well Description: RWF 342-36	Job Type: SURFACE	ADC Used: YES
Company Rep: BRIAN KLATT	Cement Supervisor: ERIC STILLSON	Elite #: RUSTY WEAVER

WILLIAMS - RWF 342-36 9 5/8 SURFACE



Customer: WILLIAMS	Job Date: 28-Nov-2011	Sales Order #: 9052891
Well Description: RWF 342-36	Job Type: SURFACE	ADC Used: YES
Company Rep: BRIAN KLATT	Cement Supervisor: ERIC STILLSON	Elite #: RUSTY WEAVER