

ENSIGN

Directional

Well Name: Booth 2-26

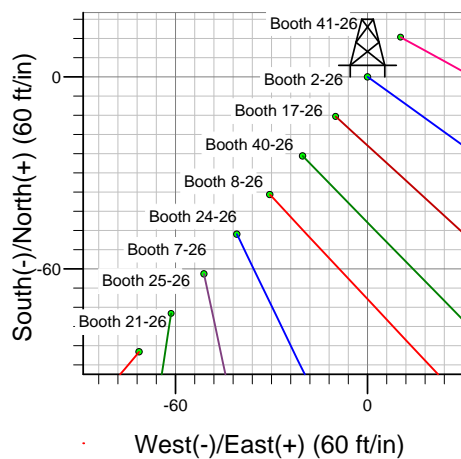
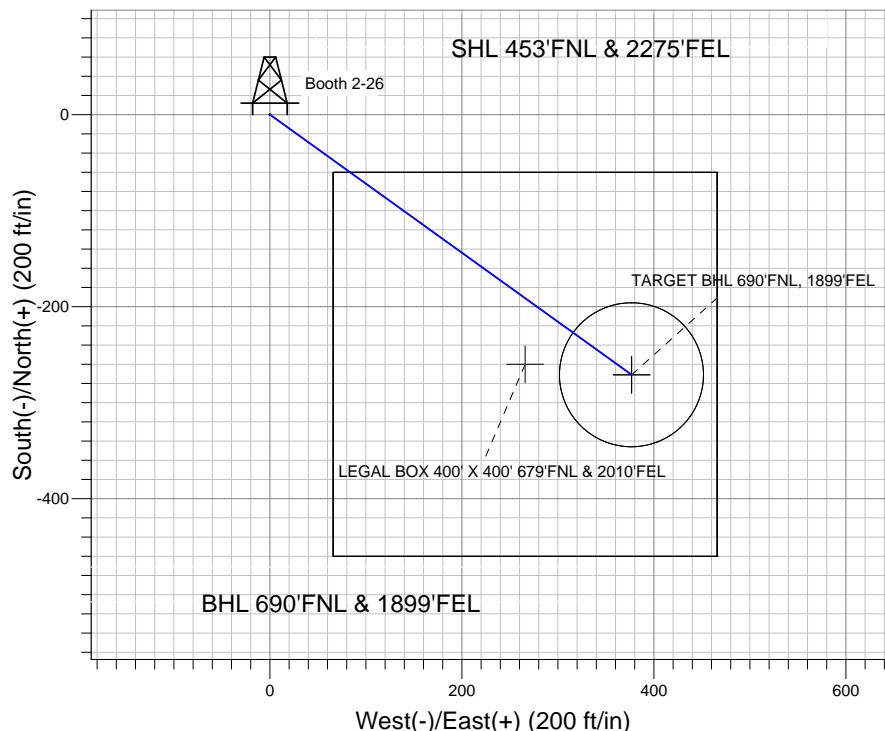
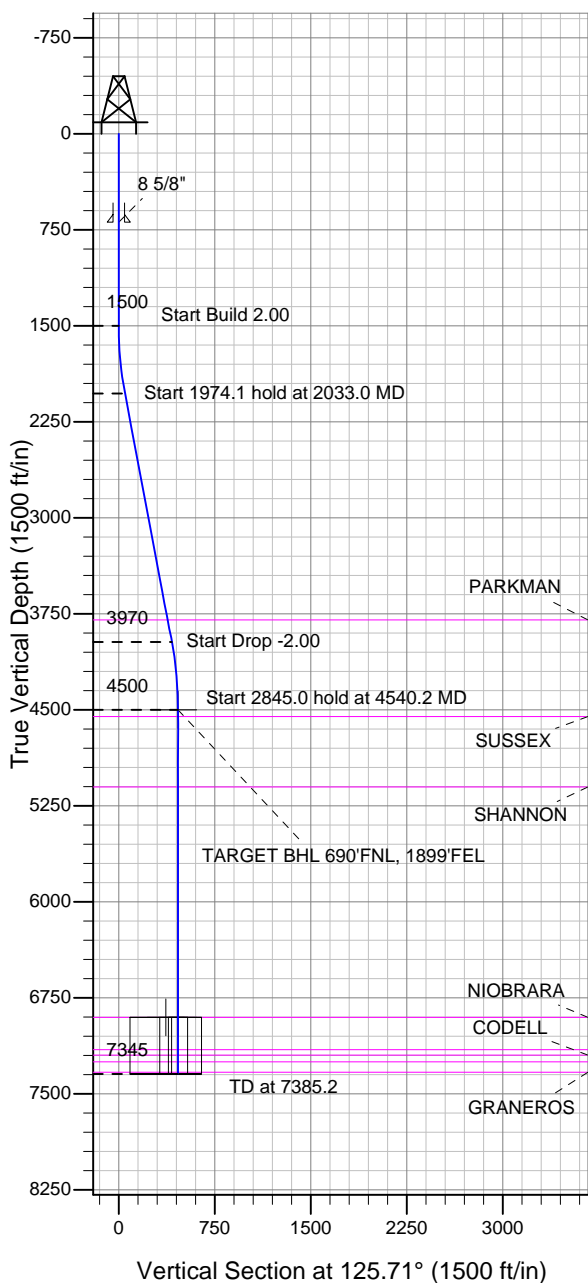
Surface Location: Booth 9 Pad Sec.26-T7N-R65W
 North American Datum 1983 US State Plane 1983 Colorado Northern Zone

Ground Elevation: 4892.0

+N/-S	+E/-W	Northing	Easting	Latitude	Longitude	Slot
0.0	0.0	1444999.64	3242105.13	40.551659	-104.628751	

Original Well Elev WELL @ 4908.0ft (Original Well Elev)

BAYSWATER EXPLORATION & PRODUCTION



Booth 9 Pad Sec.26-T7N-R65W
 Booth 2-26
 Plan #1 (6-12-12)
 11:54, June 12 2012



Azimuths to True North
 Magnetic North: 8.67°

Magnetic Field
 Strength: 53119.9nT
 Dip Angle: 67.16°
 Date: 6/12/2012
 Model: IGRF2010

WELLBORE TARGET DETAILS (LAT/LONG)

Name	TVD	+N/-S	+E/-W	Latitude	Longitude	Shape
TARGET BHL 690'FNL, 1899'FEL	4500.0	-270.9	376.8	40.550915	-104.627395	Point
LEGAL BOX 400' X 400' 679'FNL & 2010'FEL	6902.0	-259.9	265.8	40.550946	-104.627795	Rectangle (Sides: L400.0 W400.0)
TARGET CIRCLE 690'FNL & 1899'FEL	6902.0	-270.9	376.6	40.550915	-104.627396	Circle (Radius: 75.0)

SECTION DETAILS

Sec	MD	Inc	Azi	TVD	+N/-S	+E/-W	DLeg	TFace	VSec	Target
1	0.0	0.00	0.00	0.0	0.0	0.0	0.00	0.00	0.0	
2	1500.0	0.00	0.00	1500.0	0.0	0.0	0.00	0.00	0.0	
3	2033.0	10.66	125.71	2030.0	-28.9	40.1	2.00	125.71	49.4	
4	4007.2	10.66	125.71	3970.0	-242.0	336.7	0.00	0.00	414.7	
5	4540.2	0.00	0.00	4500.0	-270.9	376.8	2.00	180.00	464.1	TARGET BHL 690'FNL, 1899'FEL
6	7385.2	0.00	0.00	7345.0	-270.9	376.8	0.00	0.00	464.1	



Directional

BAYSWATER EXPLORATION & PRODUCTION

SEC.26-T7N-R65W

Booth 9 Pad Sec.26-T7N-R65W

Booth 2-26

Wellbore #1

Plan: Plan #1 (6-12-12)

Standard Planning Report

12 June, 2012

Database:	Landmark	Local Co-ordinate Reference:	Well Booth 2-26
Company:	BAYSWATER EXPLORATION & PRODUCTION	TVD Reference:	WELL @ 4908.0ft (Original Well Elev)
Project:	SEC.26-T7N-R65W	MD Reference:	WELL @ 4908.0ft (Original Well Elev)
Site:	Booth 9 Pad Sec.26-T7N-R65W	North Reference:	True
Well:	Booth 2-26	Survey Calculation Method:	Minimum Curvature
Wellbore:	Wellbore #1		
Design:	Plan #1 (6-12-12)		

Project	SEC.26-T7N-R65W, Weld County, CO		
Map System:	US State Plane 1983	System Datum:	Mean Sea Level
Geo Datum:	North American Datum 1983		Using Well Reference Point
Map Zone:	Colorado Northern Zone		Using geodetic scale factor

Booth 9 Pad Sec.26-T7N-R65W					
Site Position:		Northing:	1,444,912.98ft	Latitude:	40.551423
From:	Lat/Long	Easting:	3,242,034.56ft	Longitude:	-104.629008
Position Uncertainty:	0.0 ft	Slot Radius:	"	Grid Convergence:	0.56 °

Well	Booth 2-26					
Well Position	+N-S	86.0 ft	Northing:	1,444,999.64 ft	Latitude:	40.551659
	+E-W	71.4 ft	Easting:	3,242,105.13 ft	Longitude:	-104.628751
Position Uncertainty		0.0 ft	Wellhead Elevation:	ft	Ground Level:	4,892.0 ft

Wellbore	Wellbore #1				
Magnetics	Model Name	Sample Date	Declination (°)	Dip Angle (°)	Field Strength (nT)
	IGRF2010	6/12/2012	8.67	67.16	53,120

Design	Plan #1 (6-12-12)			
Audit Notes:				
Version:	Phase:	PROTOTYPE	Tie On Depth:	0.0
Vertical Section:	Depth From (TVD) (ft)	+N/-S (ft)	+E/-W (ft)	Direction (°)
	0.0	0.0	0.0	125.71

Plan Sections										
Measured Depth (ft)	Inclination (°)	Azimuth (°)	Vertical Depth (ft)	+N/-S (ft)	+E/-W (ft)	Dogleg Rate (°/100ft)	Build Rate (°/100ft)	Turn Rate (°/100ft)	TFO (°)	Target
0.0	0.00	0.00	0.0	0.0	0.0	0.00	0.00	0.00	0.00	
1,500.0	0.00	0.00	1,500.0	0.0	0.0	0.00	0.00	0.00	0.00	
2,033.0	10.66	125.71	2,030.0	-28.9	40.1	2.00	2.00	0.00	125.71	
4,007.2	10.66	125.71	3,970.0	-242.0	336.7	0.00	0.00	0.00	0.00	
4,540.2	0.00	0.00	4,500.0	-270.9	376.8	2.00	-2.00	0.00	180.00	TARGET BHL 690'I
7,385.2	0.00	0.00	7,345.0	-270.9	376.8	0.00	0.00	0.00	0.00	

Database:	Landmark	Local Co-ordinate Reference:	Well Booth 2-26
Company:	BAYSWATER EXPLORATION & PRODUCTION	TVD Reference:	WELL @ 4908.0ft (Original Well Elev)
Project:	SEC.26-T7N-R65W	MD Reference:	WELL @ 4908.0ft (Original Well Elev)
Site:	Booth 9 Pad Sec.26-T7N-R65W	North Reference:	True
Well:	Booth 2-26	Survey Calculation Method:	Minimum Curvature
Wellbore:	Wellbore #1		
Design:	Plan #1 (6-12-12)		

Planned Survey									
Measured Depth (ft)	Inclination (°)	Azimuth (°)	Vertical Depth (ft)	+N-S (ft)	+E-W (ft)	Vertical Section (ft)	Dogleg Rate (°/100ft)	Build Rate (°/100ft)	Turn Rate (°/100ft)
0.0	0.00	0.00	0.0	0.0	0.0	0.0	0.00	0.00	0.00
40.0	0.00	0.00	40.0	0.0	0.0	0.0	0.00	0.00	0.00
80.0	0.00	0.00	80.0	0.0	0.0	0.0	0.00	0.00	0.00
120.0	0.00	0.00	120.0	0.0	0.0	0.0	0.00	0.00	0.00
160.0	0.00	0.00	160.0	0.0	0.0	0.0	0.00	0.00	0.00
200.0	0.00	0.00	200.0	0.0	0.0	0.0	0.00	0.00	0.00
240.0	0.00	0.00	240.0	0.0	0.0	0.0	0.00	0.00	0.00
280.0	0.00	0.00	280.0	0.0	0.0	0.0	0.00	0.00	0.00
320.0	0.00	0.00	320.0	0.0	0.0	0.0	0.00	0.00	0.00
360.0	0.00	0.00	360.0	0.0	0.0	0.0	0.00	0.00	0.00
400.0	0.00	0.00	400.0	0.0	0.0	0.0	0.00	0.00	0.00
440.0	0.00	0.00	440.0	0.0	0.0	0.0	0.00	0.00	0.00
480.0	0.00	0.00	480.0	0.0	0.0	0.0	0.00	0.00	0.00
520.0	0.00	0.00	520.0	0.0	0.0	0.0	0.00	0.00	0.00
560.0	0.00	0.00	560.0	0.0	0.0	0.0	0.00	0.00	0.00
600.0	0.00	0.00	600.0	0.0	0.0	0.0	0.00	0.00	0.00
640.0	0.00	0.00	640.0	0.0	0.0	0.0	0.00	0.00	0.00
680.0	0.00	0.00	680.0	0.0	0.0	0.0	0.00	0.00	0.00
690.0	0.00	0.00	690.0	0.0	0.0	0.0	0.00	0.00	0.00
8 5/8"									
720.0	0.00	0.00	720.0	0.0	0.0	0.0	0.00	0.00	0.00
760.0	0.00	0.00	760.0	0.0	0.0	0.0	0.00	0.00	0.00
800.0	0.00	0.00	800.0	0.0	0.0	0.0	0.00	0.00	0.00
840.0	0.00	0.00	840.0	0.0	0.0	0.0	0.00	0.00	0.00
880.0	0.00	0.00	880.0	0.0	0.0	0.0	0.00	0.00	0.00
920.0	0.00	0.00	920.0	0.0	0.0	0.0	0.00	0.00	0.00
960.0	0.00	0.00	960.0	0.0	0.0	0.0	0.00	0.00	0.00
1,000.0	0.00	0.00	1,000.0	0.0	0.0	0.0	0.00	0.00	0.00
1,040.0	0.00	0.00	1,040.0	0.0	0.0	0.0	0.00	0.00	0.00
1,080.0	0.00	0.00	1,080.0	0.0	0.0	0.0	0.00	0.00	0.00
1,120.0	0.00	0.00	1,120.0	0.0	0.0	0.0	0.00	0.00	0.00
1,160.0	0.00	0.00	1,160.0	0.0	0.0	0.0	0.00	0.00	0.00
1,200.0	0.00	0.00	1,200.0	0.0	0.0	0.0	0.00	0.00	0.00
1,240.0	0.00	0.00	1,240.0	0.0	0.0	0.0	0.00	0.00	0.00
1,280.0	0.00	0.00	1,280.0	0.0	0.0	0.0	0.00	0.00	0.00
1,320.0	0.00	0.00	1,320.0	0.0	0.0	0.0	0.00	0.00	0.00
1,360.0	0.00	0.00	1,360.0	0.0	0.0	0.0	0.00	0.00	0.00
1,400.0	0.00	0.00	1,400.0	0.0	0.0	0.0	0.00	0.00	0.00
1,440.0	0.00	0.00	1,440.0	0.0	0.0	0.0	0.00	0.00	0.00
1,480.0	0.00	0.00	1,480.0	0.0	0.0	0.0	0.00	0.00	0.00
1,500.0	0.00	0.00	1,500.0	0.0	0.0	0.0	0.00	0.00	0.00
1,520.0	0.40	125.71	1,520.0	0.0	0.1	0.1	2.00	2.00	0.00
1,560.0	1.20	125.71	1,560.0	-0.4	0.5	0.6	2.00	2.00	0.00
1,600.0	2.00	125.71	1,600.0	-1.0	1.4	1.7	2.00	2.00	0.00
1,640.0	2.80	125.71	1,639.9	-2.0	2.8	3.4	2.00	2.00	0.00
1,680.0	3.60	125.71	1,679.9	-3.3	4.6	5.7	2.00	2.00	0.00
1,720.0	4.40	125.71	1,719.8	-4.9	6.9	8.4	2.00	2.00	0.00
1,760.0	5.20	125.71	1,759.6	-6.9	9.6	11.8	2.00	2.00	0.00
1,800.0	6.00	125.71	1,799.5	-9.2	12.7	15.7	2.00	2.00	0.00
1,840.0	6.80	125.71	1,839.2	-11.8	16.4	20.2	2.00	2.00	0.00
1,880.0	7.60	125.71	1,878.9	-14.7	20.4	25.2	2.00	2.00	0.00
1,920.0	8.40	125.71	1,918.5	-17.9	25.0	30.7	2.00	2.00	0.00
1,960.0	9.20	125.71	1,958.0	-21.5	29.9	36.9	2.00	2.00	0.00

Database:	Landmark	Local Co-ordinate Reference:	Well Booth 2-26
Company:	BAYSWATER EXPLORATION & PRODUCTION	TVD Reference:	WELL @ 4908.0ft (Original Well Elev)
Project:	SEC.26-T7N-R65W	MD Reference:	WELL @ 4908.0ft (Original Well Elev)
Site:	Booth 9 Pad Sec.26-T7N-R65W	North Reference:	True
Well:	Booth 2-26	Survey Calculation Method:	Minimum Curvature
Wellbore:	Wellbore #1		
Design:	Plan #1 (6-12-12)		

Planned Survey									
Measured Depth (ft)	Inclination (°)	Azimuth (°)	Vertical Depth (ft)	+N/-S (ft)	+E/-W (ft)	Vertical Section (ft)	Dogleg Rate (°/100ft)	Build Rate (°/100ft)	Turn Rate (°/100ft)
2,000.0	10.00	125.71	1,997.5	-25.4	35.3	43.5	2.00	2.00	0.00
2,033.0	10.66	125.71	2,030.0	-28.9	40.1	49.4	2.00	2.00	0.00
2,040.0	10.66	125.71	2,036.8	-29.6	41.2	50.7	0.00	0.00	0.00
2,080.0	10.66	125.71	2,076.1	-33.9	47.2	58.1	0.00	0.00	0.00
2,120.0	10.66	125.71	2,115.4	-38.3	53.2	65.5	0.00	0.00	0.00
2,160.0	10.66	125.71	2,154.7	-42.6	59.2	72.9	0.00	0.00	0.00
2,200.0	10.66	125.71	2,194.0	-46.9	65.2	80.3	0.00	0.00	0.00
2,240.0	10.66	125.71	2,233.4	-51.2	71.2	87.7	0.00	0.00	0.00
2,280.0	10.66	125.71	2,272.7	-55.5	77.2	95.1	0.00	0.00	0.00
2,320.0	10.66	125.71	2,312.0	-59.8	83.3	102.5	0.00	0.00	0.00
2,360.0	10.66	125.71	2,351.3	-64.2	89.3	109.9	0.00	0.00	0.00
2,400.0	10.66	125.71	2,390.6	-68.5	95.3	117.3	0.00	0.00	0.00
2,440.0	10.66	125.71	2,429.9	-72.8	101.3	124.7	0.00	0.00	0.00
2,480.0	10.66	125.71	2,469.2	-77.1	107.3	132.1	0.00	0.00	0.00
2,520.0	10.66	125.71	2,508.5	-81.4	113.3	139.5	0.00	0.00	0.00
2,560.0	10.66	125.71	2,547.8	-85.8	119.3	146.9	0.00	0.00	0.00
2,600.0	10.66	125.71	2,587.1	-90.1	125.3	154.3	0.00	0.00	0.00
2,640.0	10.66	125.71	2,626.5	-94.4	131.3	161.7	0.00	0.00	0.00
2,680.0	10.66	125.71	2,665.8	-98.7	137.3	169.1	0.00	0.00	0.00
2,720.0	10.66	125.71	2,705.1	-103.0	143.3	176.5	0.00	0.00	0.00
2,760.0	10.66	125.71	2,744.4	-107.4	149.3	183.9	0.00	0.00	0.00
2,800.0	10.66	125.71	2,783.7	-111.7	155.4	191.3	0.00	0.00	0.00
2,840.0	10.66	125.71	2,823.0	-116.0	161.4	198.7	0.00	0.00	0.00
2,880.0	10.66	125.71	2,862.3	-120.3	167.4	206.1	0.00	0.00	0.00
2,920.0	10.66	125.71	2,901.6	-124.6	173.4	213.5	0.00	0.00	0.00
2,960.0	10.66	125.71	2,940.9	-129.0	179.4	220.9	0.00	0.00	0.00
3,000.0	10.66	125.71	2,980.2	-133.3	185.4	228.3	0.00	0.00	0.00
3,040.0	10.66	125.71	3,019.5	-137.6	191.4	235.7	0.00	0.00	0.00
3,080.0	10.66	125.71	3,058.9	-141.9	197.4	243.1	0.00	0.00	0.00
3,120.0	10.66	125.71	3,098.2	-146.2	203.4	250.5	0.00	0.00	0.00
3,160.0	10.66	125.71	3,137.5	-150.6	209.4	257.9	0.00	0.00	0.00
3,200.0	10.66	125.71	3,176.8	-154.9	215.4	265.3	0.00	0.00	0.00
3,240.0	10.66	125.71	3,216.1	-159.2	221.4	272.7	0.00	0.00	0.00
3,280.0	10.66	125.71	3,255.4	-163.5	227.5	280.1	0.00	0.00	0.00
3,320.0	10.66	125.71	3,294.7	-167.8	233.5	287.5	0.00	0.00	0.00
3,360.0	10.66	125.71	3,334.0	-172.2	239.5	294.9	0.00	0.00	0.00
3,400.0	10.66	125.71	3,373.3	-176.5	245.5	302.3	0.00	0.00	0.00
3,440.0	10.66	125.71	3,412.6	-180.8	251.5	309.7	0.00	0.00	0.00
3,480.0	10.66	125.71	3,452.0	-185.1	257.5	317.1	0.00	0.00	0.00
3,520.0	10.66	125.71	3,491.3	-189.4	263.5	324.5	0.00	0.00	0.00
3,560.0	10.66	125.71	3,530.6	-193.7	269.5	331.9	0.00	0.00	0.00
3,600.0	10.66	125.71	3,569.9	-198.1	275.5	339.3	0.00	0.00	0.00
3,640.0	10.66	125.71	3,609.2	-202.4	281.5	346.7	0.00	0.00	0.00
3,680.0	10.66	125.71	3,648.5	-206.7	287.5	354.1	0.00	0.00	0.00
3,720.0	10.66	125.71	3,687.8	-211.0	293.5	361.5	0.00	0.00	0.00
3,760.0	10.66	125.71	3,727.1	-215.3	299.6	368.9	0.00	0.00	0.00
3,800.0	10.66	125.71	3,766.4	-219.7	305.6	376.3	0.00	0.00	0.00
3,831.1	10.66	125.71	3,797.0	-223.0	310.2	382.1	0.00	0.00	0.00
PARKMAN									
3,840.0	10.66	125.71	3,805.7	-224.0	311.6	383.7	0.00	0.00	0.00
3,880.0	10.66	125.71	3,845.1	-228.3	317.6	391.1	0.00	0.00	0.00
3,920.0	10.66	125.71	3,884.4	-232.6	323.6	398.5	0.00	0.00	0.00
3,960.0	10.66	125.71	3,923.7	-236.9	329.6	405.9	0.00	0.00	0.00

Database:	Landmark	Local Co-ordinate Reference:	Well Booth 2-26
Company:	BAYSWATER EXPLORATION & PRODUCTION	TVD Reference:	WELL @ 4908.0ft (Original Well Elev)
Project:	SEC.26-T7N-R65W	MD Reference:	WELL @ 4908.0ft (Original Well Elev)
Site:	Booth 9 Pad Sec.26-T7N-R65W	North Reference:	True
Well:	Booth 2-26	Survey Calculation Method:	Minimum Curvature
Wellbore:	Wellbore #1		
Design:	Plan #1 (6-12-12)		

Planned Survey									
Measured Depth (ft)	Inclination (°)	Azimuth (°)	Vertical Depth (ft)	+N/-S (ft)	+E/-W (ft)	Vertical Section (ft)	Dogleg Rate (°/100ft)	Build Rate (°/100ft)	Turn Rate (°/100ft)
4,000.0	10.66	125.71	3,963.0	-241.3	335.6	413.3	0.00	0.00	0.00
4,007.2	10.66	125.71	3,970.0	-242.0	336.7	414.7	0.00	0.00	0.00
4,040.0	10.00	125.71	4,002.3	-245.5	341.5	420.5	2.00	-2.00	0.00
4,080.0	9.20	125.71	4,041.8	-249.4	346.9	427.2	2.00	-2.00	0.00
4,120.0	8.40	125.71	4,081.3	-252.9	351.9	433.3	2.00	-2.00	0.00
4,160.0	7.60	125.71	4,120.9	-256.2	356.4	438.9	2.00	-2.00	0.00
4,200.0	6.80	125.71	4,160.6	-259.1	360.4	443.9	2.00	-2.00	0.00
4,240.0	6.00	125.71	4,200.3	-261.7	364.1	448.4	2.00	-2.00	0.00
4,280.0	5.20	125.71	4,240.1	-264.0	367.2	452.3	2.00	-2.00	0.00
4,320.0	4.40	125.71	4,280.0	-266.0	370.0	455.6	2.00	-2.00	0.00
4,360.0	3.60	125.71	4,319.9	-267.6	372.2	458.4	2.00	-2.00	0.00
4,400.0	2.80	125.71	4,359.8	-268.9	374.0	460.7	2.00	-2.00	0.00
4,440.0	2.00	125.71	4,399.8	-269.9	375.4	462.3	2.00	-2.00	0.00
4,480.0	1.20	125.71	4,439.8	-270.5	376.3	463.5	2.00	-2.00	0.00
4,520.0	0.40	125.71	4,479.8	-270.9	376.8	464.0	2.00	-2.00	0.00
4,540.2	0.00	0.00	4,500.0	-270.9	376.8	464.1	2.00	-2.00	-621.87
TARGET BHL 690'FNL, 1899'FEL									
4,560.0	0.00	0.00	4,519.8	-270.9	376.8	464.1	0.00	0.00	0.00
4,592.2	0.00	0.00	4,552.0	-270.9	376.8	464.1	0.00	0.00	0.00
SUSSEX									
4,600.0	0.00	0.00	4,559.8	-270.9	376.8	464.1	0.00	0.00	0.00
4,640.0	0.00	0.00	4,599.8	-270.9	376.8	464.1	0.00	0.00	0.00
4,680.0	0.00	0.00	4,639.8	-270.9	376.8	464.1	0.00	0.00	0.00
4,720.0	0.00	0.00	4,679.8	-270.9	376.8	464.1	0.00	0.00	0.00
4,760.0	0.00	0.00	4,719.8	-270.9	376.8	464.1	0.00	0.00	0.00
4,800.0	0.00	0.00	4,759.8	-270.9	376.8	464.1	0.00	0.00	0.00
4,840.0	0.00	0.00	4,799.8	-270.9	376.8	464.1	0.00	0.00	0.00
4,880.0	0.00	0.00	4,839.8	-270.9	376.8	464.1	0.00	0.00	0.00
4,920.0	0.00	0.00	4,879.8	-270.9	376.8	464.1	0.00	0.00	0.00
4,960.0	0.00	0.00	4,919.8	-270.9	376.8	464.1	0.00	0.00	0.00
5,000.0	0.00	0.00	4,959.8	-270.9	376.8	464.1	0.00	0.00	0.00
5,040.0	0.00	0.00	4,999.8	-270.9	376.8	464.1	0.00	0.00	0.00
5,080.0	0.00	0.00	5,039.8	-270.9	376.8	464.1	0.00	0.00	0.00
5,120.0	0.00	0.00	5,079.8	-270.9	376.8	464.1	0.00	0.00	0.00
5,142.2	0.00	0.00	5,102.0	-270.9	376.8	464.1	0.00	0.00	0.00
SHANNON									
5,160.0	0.00	0.00	5,119.8	-270.9	376.8	464.1	0.00	0.00	0.00
5,200.0	0.00	0.00	5,159.8	-270.9	376.8	464.1	0.00	0.00	0.00
5,240.0	0.00	0.00	5,199.8	-270.9	376.8	464.1	0.00	0.00	0.00
5,280.0	0.00	0.00	5,239.8	-270.9	376.8	464.1	0.00	0.00	0.00
5,320.0	0.00	0.00	5,279.8	-270.9	376.8	464.1	0.00	0.00	0.00
5,360.0	0.00	0.00	5,319.8	-270.9	376.8	464.1	0.00	0.00	0.00
5,400.0	0.00	0.00	5,359.8	-270.9	376.8	464.1	0.00	0.00	0.00
5,440.0	0.00	0.00	5,399.8	-270.9	376.8	464.1	0.00	0.00	0.00
5,480.0	0.00	0.00	5,439.8	-270.9	376.8	464.1	0.00	0.00	0.00
5,520.0	0.00	0.00	5,479.8	-270.9	376.8	464.1	0.00	0.00	0.00
5,560.0	0.00	0.00	5,519.8	-270.9	376.8	464.1	0.00	0.00	0.00
5,600.0	0.00	0.00	5,559.8	-270.9	376.8	464.1	0.00	0.00	0.00
5,640.0	0.00	0.00	5,599.8	-270.9	376.8	464.1	0.00	0.00	0.00
5,680.0	0.00	0.00	5,639.8	-270.9	376.8	464.1	0.00	0.00	0.00
5,720.0	0.00	0.00	5,679.8	-270.9	376.8	464.1	0.00	0.00	0.00
5,760.0	0.00	0.00	5,719.8	-270.9	376.8	464.1	0.00	0.00	0.00
5,800.0	0.00	0.00	5,759.8	-270.9	376.8	464.1	0.00	0.00	0.00

Database:	Landmark	Local Co-ordinate Reference:	Well Booth 2-26
Company:	BAYSWATER EXPLORATION & PRODUCTION	TVD Reference:	WELL @ 4908.0ft (Original Well Elev)
Project:	SEC.26-T7N-R65W	MD Reference:	WELL @ 4908.0ft (Original Well Elev)
Site:	Booth 9 Pad Sec.26-T7N-R65W	North Reference:	True
Well:	Booth 2-26	Survey Calculation Method:	Minimum Curvature
Wellbore:	Wellbore #1		
Design:	Plan #1 (6-12-12)		

Planned Survey									
Measured Depth (ft)	Inclination (°)	Azimuth (°)	Vertical Depth (ft)	+N/-S (ft)	+E/-W (ft)	Vertical Section (ft)	Dogleg Rate (°/100ft)	Build Rate (°/100ft)	Turn Rate (°/100ft)
5,840.0	0.00	0.00	5,799.8	-270.9	376.8	464.1	0.00	0.00	0.00
5,880.0	0.00	0.00	5,839.8	-270.9	376.8	464.1	0.00	0.00	0.00
5,920.0	0.00	0.00	5,879.8	-270.9	376.8	464.1	0.00	0.00	0.00
5,960.0	0.00	0.00	5,919.8	-270.9	376.8	464.1	0.00	0.00	0.00
6,000.0	0.00	0.00	5,959.8	-270.9	376.8	464.1	0.00	0.00	0.00
6,040.0	0.00	0.00	5,999.8	-270.9	376.8	464.1	0.00	0.00	0.00
6,080.0	0.00	0.00	6,039.8	-270.9	376.8	464.1	0.00	0.00	0.00
6,120.0	0.00	0.00	6,079.8	-270.9	376.8	464.1	0.00	0.00	0.00
6,160.0	0.00	0.00	6,119.8	-270.9	376.8	464.1	0.00	0.00	0.00
6,200.0	0.00	0.00	6,159.8	-270.9	376.8	464.1	0.00	0.00	0.00
6,240.0	0.00	0.00	6,199.8	-270.9	376.8	464.1	0.00	0.00	0.00
6,280.0	0.00	0.00	6,239.8	-270.9	376.8	464.1	0.00	0.00	0.00
6,320.0	0.00	0.00	6,279.8	-270.9	376.8	464.1	0.00	0.00	0.00
6,360.0	0.00	0.00	6,319.8	-270.9	376.8	464.1	0.00	0.00	0.00
6,400.0	0.00	0.00	6,359.8	-270.9	376.8	464.1	0.00	0.00	0.00
6,440.0	0.00	0.00	6,399.8	-270.9	376.8	464.1	0.00	0.00	0.00
6,480.0	0.00	0.00	6,439.8	-270.9	376.8	464.1	0.00	0.00	0.00
6,520.0	0.00	0.00	6,479.8	-270.9	376.8	464.1	0.00	0.00	0.00
6,560.0	0.00	0.00	6,519.8	-270.9	376.8	464.1	0.00	0.00	0.00
6,600.0	0.00	0.00	6,559.8	-270.9	376.8	464.1	0.00	0.00	0.00
6,640.0	0.00	0.00	6,599.8	-270.9	376.8	464.1	0.00	0.00	0.00
6,680.0	0.00	0.00	6,639.8	-270.9	376.8	464.1	0.00	0.00	0.00
6,720.0	0.00	0.00	6,679.8	-270.9	376.8	464.1	0.00	0.00	0.00
6,760.0	0.00	0.00	6,719.8	-270.9	376.8	464.1	0.00	0.00	0.00
6,800.0	0.00	0.00	6,759.8	-270.9	376.8	464.1	0.00	0.00	0.00
6,840.0	0.00	0.00	6,799.8	-270.9	376.8	464.1	0.00	0.00	0.00
6,880.0	0.00	0.00	6,839.8	-270.9	376.8	464.1	0.00	0.00	0.00
6,920.0	0.00	0.00	6,879.8	-270.9	376.8	464.1	0.00	0.00	0.00
6,942.2	0.00	0.00	6,902.0	-270.9	376.8	464.1	0.00	0.00	0.00
NIOBRARA - TARGET CIRCLE 690'FNL & 1899'FEL - LEGAL BOX 400' X 400' 679'FNL & 2010'FEL									
6,960.0	0.00	0.00	6,919.8	-270.9	376.8	464.1	0.00	0.00	0.00
7,000.0	0.00	0.00	6,959.8	-270.9	376.8	464.1	0.00	0.00	0.00
7,040.0	0.00	0.00	6,999.8	-270.9	376.8	464.1	0.00	0.00	0.00
7,080.0	0.00	0.00	7,039.8	-270.9	376.8	464.1	0.00	0.00	0.00
7,120.0	0.00	0.00	7,079.8	-270.9	376.8	464.1	0.00	0.00	0.00
7,160.0	0.00	0.00	7,119.8	-270.9	376.8	464.1	0.00	0.00	0.00
7,194.2	0.00	0.00	7,154.0	-270.9	376.8	464.1	0.00	0.00	0.00
FORT HAYS									
7,200.0	0.00	0.00	7,159.8	-270.9	376.8	464.1	0.00	0.00	0.00
7,238.2	0.00	0.00	7,198.0	-270.9	376.8	464.1	0.00	0.00	0.00
CODELL									
7,240.0	0.00	0.00	7,199.8	-270.9	376.8	464.1	0.00	0.00	0.00
7,280.0	0.00	0.00	7,239.8	-270.9	376.8	464.1	0.00	0.00	0.00
7,290.2	0.00	0.00	7,250.0	-270.9	376.8	464.1	0.00	0.00	0.00
GREENHORN									
7,320.0	0.00	0.00	7,279.8	-270.9	376.8	464.1	0.00	0.00	0.00
7,360.0	0.00	0.00	7,319.8	-270.9	376.8	464.1	0.00	0.00	0.00
7,372.2	0.00	0.00	7,332.0	-270.9	376.8	464.1	0.00	0.00	0.00
GRANEROS									
7,385.2	0.00	0.00	7,345.0	-270.9	376.8	464.1	0.00	0.00	0.00

Database:	Landmark	Local Co-ordinate Reference:	Well Booth 2-26
Company:	BAYSWATER EXPLORATION & PRODUCTION	TVD Reference:	WELL @ 4908.0ft (Original Well Elev)
Project:	SEC.26-T7N-R65W	MD Reference:	WELL @ 4908.0ft (Original Well Elev)
Site:	Booth 9 Pad Sec.26-T7N-R65W	North Reference:	True
Well:	Booth 2-26	Survey Calculation Method:	Minimum Curvature
Wellbore:	Wellbore #1		
Design:	Plan #1 (6-12-12)		

Casing Points

Measured Depth (ft)	Vertical Depth (ft)	Name	Casing Diameter (")	Hole Diameter (")
690.0	690.0	8 5/8"	8-5/8	12-1/4

Formations

Measured Depth (ft)	Vertical Depth (ft)	Name	Lithology	Dip (°)	Dip Direction (°)
3,831.1	3,797.0	PARKMAN		0.00	
4,592.2	4,552.0	SUSSEX		0.00	
5,142.2	5,102.0	SHANNON		0.00	
6,942.2	6,902.0	NIOBRARA		0.00	
7,194.2	7,154.0	FORT HAYS		0.00	
7,238.2	7,198.0	CODELL		0.00	
7,290.2	7,250.0	GREENHORN		0.00	
7,372.2	7,332.0	GRANEROS		0.00	



Directional

BAYSWATER EXPLORATION & PRODUCTION

SEC.26-T7N-R65W

Booth 9 Pad Sec.26-T7N-R65W

Booth 2-26

Wellbore #1

Plan #1 (6-12-12)

Anticollision Report

12 June, 2012

Company:	BAYSWATER EXPLORATION & PRODUCTION	Local Co-ordinate Reference:	Well Booth 2-26
Project:	SEC.26-T7N-R65W	TVD Reference:	WELL @ 4908.0ft (Original Well Elev)
Reference Site:	Booth 9 Pad Sec.26-T7N-R65W	MD Reference:	WELL @ 4908.0ft (Original Well Elev)
Site Error:	0.0ft	North Reference:	True
Reference Well:	Booth 2-26	Survey Calculation Method:	Minimum Curvature
Well Error:	0.0ft	Output errors are at	2.00 sigma
Reference Wellbore	Wellbore #1	Database:	Landmark
Reference Design:	Plan #1 (6-12-12)	Offset TVD Reference:	Offset Datum

Offset Design		Booth 9 Pad Sec.26-T7N-R65W - Booth 17-26 - Wellbore #1 - Plan #1 (5-21-12)											Offset Site Error:	0.0 ft
Survey Program: 0-MWD													Offset Well Error:	0.0 ft
Reference		Offset		Semi Major Axis		Highside Toolface (°)	Offset Wellbore Centre		Distance		Minimum Separation (ft)	Separation Factor	Warning	
Measured Depth (ft)	Vertical Depth (ft)	Measured Depth (ft)	Vertical Depth (ft)	Reference	Offset		+N/-S (ft)	+E/-W (ft)	Between Centres (ft)	Between Ellipses (ft)				
2,033.0	2,030.0	1,987.0	1,943.7	4.4	7.9	10.59	-239.3	238.4	301.7	292.7	9.04	33.365		
2,100.0	2,095.8	2,053.6	2,007.4	4.6	8.3	10.76	-252.2	252.5	308.9	299.5	9.38	32.929		
2,200.0	2,194.0	2,153.0	2,102.7	4.9	8.9	11.01	-271.4	273.6	319.6	309.7	9.89	32.314		
2,300.0	2,292.3	2,252.4	2,197.9	5.2	9.5	11.24	-290.6	294.6	330.3	319.9	10.41	31.739		
2,400.0	2,390.6	2,351.8	2,293.2	5.5	10.1	11.45	-309.8	315.7	341.0	330.1	10.93	31.202		
2,500.0	2,488.9	2,451.3	2,388.4	5.9	10.7	11.65	-329.1	336.7	351.8	340.3	11.46	30.699		
2,600.0	2,587.1	2,550.7	2,483.7	6.2	11.3	11.84	-348.3	357.8	362.5	350.5	11.99	30.229		
2,700.0	2,685.4	2,650.1	2,578.9	6.6	11.9	12.02	-367.5	378.8	373.2	360.7	12.53	29.790		
2,800.0	2,783.7	2,749.5	2,674.1	7.0	12.5	12.19	-386.7	399.9	384.0	370.9	13.07	29.378		
2,900.0	2,882.0	2,848.9	2,769.4	7.3	13.1	12.35	-406.0	420.9	394.7	381.1	13.61	28.991		
3,000.0	2,980.2	2,948.3	2,864.6	7.7	13.7	12.50	-425.2	442.0	405.5	391.3	14.16	28.629		
3,100.0	3,078.5	3,047.8	2,959.9	8.1	14.4	12.64	-444.4	463.0	416.2	401.5	14.71	28.288		
3,200.0	3,176.8	3,147.2	3,055.1	8.5	15.0	12.78	-463.6	484.1	427.0	411.7	15.27	27.967		
3,300.0	3,275.1	3,246.6	3,150.3	8.9	15.6	12.91	-482.9	505.1	437.7	421.9	15.82	27.665		
3,400.0	3,373.3	3,346.0	3,245.6	9.3	16.2	13.03	-502.1	526.2	448.5	432.1	16.38	27.380		
3,500.0	3,471.6	3,445.4	3,340.8	9.7	16.8	13.15	-521.3	547.2	459.2	442.3	16.94	27.110		
3,600.0	3,569.9	3,544.8	3,436.1	10.1	17.4	13.26	-540.5	568.2	470.0	452.5	17.50	26.855		
3,700.0	3,668.2	3,644.2	3,531.3	10.5	18.0	13.37	-559.7	589.3	480.7	462.7	18.06	26.614		
3,800.0	3,766.4	3,743.7	3,626.5	10.9	18.6	13.47	-579.0	610.3	491.5	472.9	18.63	26.385		
3,900.0	3,864.7	3,843.1	3,721.8	11.3	19.2	13.57	-598.2	631.4	502.2	483.1	19.19	26.168		
4,007.2	3,970.0	3,949.6	3,823.9	11.7	19.9	13.67	-618.8	654.0	513.8	494.0	19.80	25.947		
4,100.0	4,061.5	4,041.7	3,912.1	12.1	20.5	13.77	-636.6	673.5	525.2	504.9	20.30	25.872		
4,200.0	4,160.6	4,140.5	4,006.7	12.3	21.1	13.80	-655.7	694.4	540.8	520.0	20.79	26.011		
4,300.0	4,260.1	4,238.7	4,100.8	12.6	21.7	13.77	-674.7	715.2	559.7	538.5	21.24	26.349		
4,400.0	4,359.8	4,336.2	4,194.2	12.8	22.3	13.68	-693.5	735.8	581.9	560.3	21.65	26.876		
4,500.0	4,459.8	4,432.8	4,286.8	12.9	22.9	13.54	-712.2	756.3	607.4	585.4	22.02	27.584		
4,540.2	4,500.0	4,471.4	4,323.8	13.0	23.1	139.19	-719.7	764.4	618.6	596.5	22.16	27.918		
4,600.0	4,559.8	4,528.7	4,378.6	13.1	23.4	139.00	-730.8	776.6	635.7	613.2	22.43	28.344		
4,700.0	4,659.8	4,624.5	4,470.4	13.2	24.0	138.72	-749.3	796.8	664.2	641.3	22.88	29.026		
4,800.0	4,759.8	4,720.3	4,562.2	13.4	24.6	138.46	-767.8	817.1	692.7	669.4	23.34	29.678		
4,900.0	4,859.8	4,816.1	4,654.0	13.6	25.2	138.22	-786.4	837.4	721.2	697.4	23.80	30.301		
5,000.0	4,959.8	4,911.9	4,745.7	13.7	25.8	138.00	-804.9	857.7	749.8	725.5	24.27	30.898		
5,100.0	5,059.8	5,007.7	4,837.5	13.9	26.4	137.79	-823.4	878.0	778.3	753.6	24.73	31.469		
5,200.0	5,159.8	5,103.5	4,929.3	14.0	27.0	137.60	-841.9	898.3	806.9	781.7	25.20	32.017		
5,300.0	5,259.8	5,217.5	5,038.7	14.2	27.6	137.39	-863.5	921.9	835.0	809.3	25.71	32.481		
5,400.0	5,359.8	5,355.0	5,172.1	14.4	28.2	137.20	-886.0	946.5	859.2	832.9	26.23	32.758		
5,500.0	5,459.8	5,495.6	5,310.0	14.6	28.6	137.04	-904.5	966.8	878.6	851.9	26.74	32.863		
5,600.0	5,559.8	5,638.6	5,451.4	14.7	29.0	136.93	-918.6	982.2	893.2	866.0	27.22	32.810		
5,700.0	5,659.8	5,783.4	5,595.5	14.9	29.3	136.86	-928.1	992.6	902.8	875.2	27.69	32.603		
5,800.0	5,759.8	5,929.3	5,741.2	15.1	29.5	136.83	-932.6	997.5	907.4	879.3	28.14	32.252		
5,900.0	5,859.8	6,047.9	5,859.8	15.2	29.6	136.83	-933.0	998.0	907.8	879.3	28.53	31.824		
6,000.0	5,959.8	6,147.9	5,959.8	15.4	29.7	136.83	-933.0	998.0	907.8	879.0	28.88	31.430		
6,100.0	6,059.8	6,247.9	6,059.8	15.6	29.8	136.83	-933.0	998.0	907.8	878.6	29.24	31.044		
6,200.0	6,159.8	6,347.9	6,159.8	15.8	29.8	136.83	-933.0	998.0	907.8	878.2	29.61	30.664		
6,300.0	6,259.8	6,447.9	6,259.8	16.0	29.9	136.83	-933.0	998.0	907.8	877.9	29.97	30.291		
6,400.0	6,359.8	6,547.9	6,359.8	16.1	30.0	136.83	-933.0	998.0	907.8	877.5	30.34	29.926		
6,500.0	6,459.8	6,647.9	6,459.8	16.3	30.1	136.83	-933.0	998.0	907.8	877.1	30.71	29.567		
6,600.0	6,559.8	6,747.9	6,559.8	16.5	30.2	136.83	-933.0	998.0	907.8	876.8	31.08	29.214		
6,700.0	6,659.8	6,847.9	6,659.8	16.7	30.3	136.83	-933.0	998.0	907.8	876.4	31.45	28.868		
6,800.0	6,759.8	6,947.9	6,759.8	16.9	30.4	136.83	-933.0	998.0	907.8	876.0	31.82	28.529		
6,900.0	6,859.8	7,047.9	6,859.8	17.1	30.5	136.83	-933.0	998.0	907.8	875.6	32.20	28.196		

CC - Min centre to center distance or convergent point, SF - min separation factor, ES - min ellipse separation

Company:	BAYSWATER EXPLORATION & PRODUCTION	Local Co-ordinate Reference:	Well Booth 2-26
Project:	SEC.26-T7N-R65W	TVD Reference:	WELL @ 4908.0ft (Original Well Elev)
Reference Site:	Booth 9 Pad Sec.26-T7N-R65W	MD Reference:	WELL @ 4908.0ft (Original Well Elev)
Site Error:	0.0ft	North Reference:	True
Reference Well:	Booth 2-26	Survey Calculation Method:	Minimum Curvature
Well Error:	0.0ft	Output errors are at	2.00 sigma
Reference Wellbore	Wellbore #1	Database:	Landmark
Reference Design:	Plan #1 (6-12-12)	Offset TVD Reference:	Offset Datum

Offset Design Booth 9 Pad Sec.26-T7N-R65W - Booth 17-26 - Wellbore #1 - Plan #1 (5-21-12)												Offset Site Error:	0.0 ft
Survey Program: 0-MWD												Offset Well Error:	0.0 ft
Reference	Offset	Semi Major Axis		Distance									
Measured Depth (ft)	Vertical Depth (ft)	Measured Depth (ft)	Vertical Depth (ft)	Reference (ft)	Offset (ft)	Highside Toolface (°)	Offset Wellbore Centre +N/-S (ft)	Offset Wellbore Centre +E/-W (ft)	Between Centres (ft)	Between Ellipses (ft)	Minimum Separation (ft)	Separation Factor	Warning
7,000.0	6,959.8	7,147.9	6,959.8	17.3	30.6	136.83	-933.0	998.0	907.8	875.3	32.58	27.869	
7,100.0	7,059.8	7,247.9	7,059.8	17.4	30.7	136.83	-933.0	998.0	907.8	874.9	32.95	27.548	
7,200.0	7,159.8	7,347.9	7,159.8	17.6	30.8	136.83	-933.0	998.0	907.8	874.5	33.34	27.234	
7,300.0	7,259.8	7,447.9	7,259.8	17.8	30.9	136.83	-933.0	998.0	907.8	874.1	33.72	26.925	
7,350.7	7,310.5	7,498.6	7,310.5	17.9	30.9	136.83	-933.0	998.0	907.8	873.9	33.91	26.770	
7,385.2	7,345.0	7,518.1	7,330.0	18.0	31.0	136.83	-933.0	998.0	908.0	873.9	34.02	26.690	

Company:	BAYSWATER EXPLORATION & PRODUCTION	Local Co-ordinate Reference:	Well Booth 2-26
Project:	SEC.26-T7N-R65W	TVD Reference:	WELL @ 4908.0ft (Original Well Elev)
Reference Site:	Booth 9 Pad Sec.26-T7N-R65W	MD Reference:	WELL @ 4908.0ft (Original Well Elev)
Site Error:	0.0ft	North Reference:	True
Reference Well:	Booth 2-26	Survey Calculation Method:	Minimum Curvature
Well Error:	0.0ft	Output errors are at	2.00 sigma
Reference Wellbore	Wellbore #1	Database:	Landmark
Reference Design:	Plan #1 (6-12-12)	Offset TVD Reference:	Offset Datum

Offset Design Booth 9 Pad Sec.26-T7N-R65W - Booth 41-26 - Wellbore #1 - Plan #2 (6-12-12)													Offset Site Error:	0.0 ft
Survey Program: 0-MWD													Offset Well Error:	0.0 ft
Measured Depth (ft)	Vertical Depth (ft)	Measured Depth (ft)	Vertical Depth (ft)	Reference	Offset	Semi Major Axis	Highside Toolface (°)	Offset Wellbore Centre +N/-S (ft)	+E/-W (ft)	Between Centres (ft)	Between Ellipses (ft)	Minimum Separation (ft)	Separation Factor	Warning
0.0	0.0	0.0	0.0	0.0	0.0	39.70	39.70	12.4	10.3	16.1	16.1	0.00	N/A	
100.0	100.0	99.0	99.0	0.1	0.1	39.70	39.70	12.4	10.3	16.1	15.9	0.22	71.982	
200.0	200.0	199.0	199.0	0.3	0.3	39.70	39.70	12.4	10.3	16.1	15.4	0.67	23.954 CC	
300.0	300.0	298.9	298.8	0.6	0.5	45.52	45.52	11.6	11.8	16.5	15.4	1.11	14.919 ES	
400.0	400.0	398.5	398.3	0.8	0.8	60.91	60.91	9.1	16.3	18.7	17.1	1.55	12.063 SF	
500.0	500.0	497.6	497.1	1.0	1.0	78.30	78.30	4.9	23.8	24.4	22.4	2.00	12.191	
600.0	600.0	596.0	594.8	1.2	1.3	91.35	91.35	-0.8	34.2	34.5	32.0	2.47	13.960	
700.0	700.0	693.5	691.1	1.5	1.6	99.68	99.68	-8.1	47.4	48.7	45.8	2.97	16.411	
800.0	800.0	789.9	785.7	1.7	2.0	104.89	104.89	-16.8	63.3	66.8	63.3	3.51	19.050	
900.0	900.0	884.9	878.4	1.9	2.4	108.27	108.27	-27.0	81.6	88.4	84.3	4.08	21.651	
1,000.0	1,000.0	978.4	968.9	2.1	2.9	110.55	110.55	-38.4	102.3	113.4	108.7	4.70	24.122	
1,100.0	1,100.0	1,070.3	1,056.9	2.4	3.4	112.15	112.15	-50.9	125.2	141.5	136.2	5.35	26.430	
1,200.0	1,200.0	1,160.3	1,142.4	2.6	4.0	113.31	113.31	-64.6	149.9	172.8	166.7	6.05	28.572	
1,300.0	1,300.0	1,248.4	1,225.1	2.8	4.6	114.18	114.18	-79.2	176.4	207.0	200.2	6.77	30.556	
1,400.0	1,400.0	1,334.5	1,305.0	3.0	5.2	114.84	114.84	-94.6	204.4	244.1	236.6	7.53	32.399	
1,500.0	1,500.0	1,418.4	1,382.0	3.3	5.9	115.36	115.36	-110.8	233.8	283.9	275.6	8.32	34.120	
1,600.0	1,600.0	1,500.9	1,456.6	3.5	6.7	-9.83	-9.83	-127.8	264.5	324.9	317.6	7.26	44.774	
1,700.0	1,699.8	1,590.8	1,537.3	3.6	7.5	-9.46	-9.46	-147.0	299.4	364.5	356.7	7.74	47.101	
1,800.0	1,799.5	1,683.9	1,620.7	3.8	8.4	-9.24	-9.24	-167.0	335.6	400.9	392.7	8.23	48.695	
1,900.0	1,898.7	1,778.3	1,705.2	4.1	9.3	-9.12	-9.12	-187.2	372.3	434.2	425.4	8.75	49.643	
2,000.0	1,997.5	1,873.7	1,790.7	4.3	10.2	-9.10	-9.10	-207.6	409.4	464.1	454.9	9.27	50.050	
2,033.0	2,030.0	1,905.4	1,819.2	4.4	10.5	-9.10	-9.10	-214.4	421.7	473.3	463.9	9.45	50.083	
2,100.0	2,095.8	1,969.8	1,876.9	4.6	11.1	-9.18	-9.18	-228.2	446.7	491.5	481.7	9.82	50.048	
2,200.0	2,194.0	2,066.0	1,963.1	4.9	12.0	-9.29	-9.29	-248.8	484.1	518.8	508.4	10.38	49.967	
2,300.0	2,292.3	2,162.3	2,049.4	5.2	12.9	-9.38	-9.38	-269.4	521.5	546.0	535.0	10.95	49.860	
2,400.0	2,390.6	2,258.5	2,135.6	5.5	13.9	-9.47	-9.47	-290.1	558.9	573.2	561.7	11.53	49.734	
2,500.0	2,488.9	2,354.7	2,221.8	5.9	14.8	-9.55	-9.55	-310.7	596.3	600.4	588.3	12.11	49.597	
2,600.0	2,587.1	2,450.9	2,308.0	6.2	15.7	-9.62	-9.62	-331.3	633.7	627.7	615.0	12.69	49.453	
2,700.0	2,685.4	2,547.1	2,394.3	6.6	16.7	-9.68	-9.68	-351.9	671.1	654.9	641.6	13.28	49.305	
2,800.0	2,783.7	2,643.4	2,480.5	7.0	17.6	-9.74	-9.74	-372.5	708.5	682.1	668.2	13.88	49.155	
2,900.0	2,882.0	2,739.6	2,566.7	7.3	18.5	-9.80	-9.80	-393.1	745.9	709.3	694.9	14.47	49.006	
3,000.0	2,980.2	2,835.8	2,652.9	7.7	19.5	-9.85	-9.85	-413.7	783.2	736.6	721.5	15.08	48.859	
3,100.0	3,078.5	2,932.0	2,739.2	8.1	20.4	-9.90	-9.90	-434.4	820.6	763.8	748.1	15.68	48.715	
3,200.0	3,176.8	3,028.2	2,825.4	8.5	21.3	-9.94	-9.94	-455.0	858.0	791.0	774.8	16.29	48.574	
3,300.0	3,275.1	3,124.5	2,911.6	8.9	22.3	-9.98	-9.98	-475.6	895.4	818.3	801.4	16.89	48.437	
3,400.0	3,373.3	3,220.7	2,997.9	9.3	23.2	-10.02	-10.02	-496.2	932.8	845.5	828.0	17.50	48.303	
3,500.0	3,471.6	3,316.9	3,084.1	9.7	24.1	-10.06	-10.06	-516.8	970.2	872.7	854.6	18.12	48.174	
3,600.0	3,569.9	3,413.1	3,170.3	10.1	25.1	-10.09	-10.09	-537.4	1,007.6	900.0	881.2	18.73	48.049	
3,700.0	3,668.2	3,509.3	3,256.5	10.5	26.0	-10.13	-10.13	-558.0	1,045.0	927.2	907.9	19.35	47.929	
3,800.0	3,766.4	3,605.6	3,342.8	10.9	26.9	-10.16	-10.16	-578.6	1,082.4	954.4	934.5	19.96	47.812	
3,900.0	3,864.7	3,701.8	3,429.0	11.3	27.9	-10.19	-10.19	-599.3	1,119.8	981.7	961.1	20.58	47.700	
4,007.2	3,970.0	3,804.9	3,521.4	11.7	28.9	-10.22	-10.22	-621.4	1,159.8	1,010.9	989.6	21.24	47.583	
4,100.0	4,061.5	3,893.8	3,601.1	12.1	29.7	-10.32	-10.32	-640.4	1,194.4	1,037.6	1,015.8	21.73	47.738	
4,200.0	4,160.6	3,988.6	3,686.0	12.3	30.6	-10.42	-10.42	-660.7	1,231.2	1,069.5	1,047.3	22.21	48.157	
4,300.0	4,260.1	4,082.2	3,769.9	12.6	31.6	-10.50	-10.50	-680.8	1,267.6	1,104.6	1,082.0	22.64	48.795	
4,400.0	4,359.8	4,174.5	3,852.6	12.8	32.5	-10.56	-10.56	-700.5	1,303.5	1,143.0	1,119.9	23.02	49.645	
4,500.0	4,459.8	4,265.5	3,934.1	12.9	33.3	-10.61	-10.61	-720.0	1,338.8	1,184.5	1,161.1	23.36	50.701	
4,540.2	4,500.0	4,301.6	3,966.5	13.0	33.7	-115.08	-115.08	-727.8	1,352.9	1,202.0	1,178.5	23.49	51.180	
4,600.0	4,559.8	4,355.2	4,014.6	13.1	34.2	-115.17	-115.17	-739.2	1,373.7	1,228.5	1,204.7	23.78	51.660	
4,700.0	4,659.8	4,444.8	4,094.9	13.2	35.1	-115.29	-115.29	-758.4	1,408.5	1,272.8	1,248.5	24.28	52.430	
4,800.0	4,759.8	4,534.4	4,175.2	13.4	36.0	-115.41	-115.41	-777.6	1,443.3	1,317.1	1,292.4	24.77	53.165	

CC - Min centre to center distance or convergent point, SF - min separation factor, ES - min ellipse separation

Company:	BAYSWATER EXPLORATION & PRODUCTION	Local Co-ordinate Reference:	Well Booth 2-26
Project:	SEC.26-T7N-R65W	TVD Reference:	WELL @ 4908.0ft (Original Well Elev)
Reference Site:	Booth 9 Pad Sec.26-T7N-R65W	MD Reference:	WELL @ 4908.0ft (Original Well Elev)
Site Error:	0.0ft	North Reference:	True
Reference Well:	Booth 2-26	Survey Calculation Method:	Minimum Curvature
Well Error:	0.0ft	Output errors are at	2.00 sigma
Reference Wellbore	Wellbore #1	Database:	Landmark
Reference Design:	Plan #1 (6-12-12)	Offset TVD Reference:	Offset Datum

Offset Design Booth 9 Pad Sec.26-T7N-R65W - Booth 41-26 - Wellbore #1 - Plan #2 (6-12-12)													Offset Site Error:	0.0 ft
Survey Program: 0-MWD													Offset Well Error:	0.0 ft
Measured Depth (ft)	Vertical Depth (ft)	Measured Depth (ft)	Vertical Depth (ft)	Reference	Offset	Semi Major Axis Reference	Highside Toolface (°)	Offset Wellbore Centre +N/-S (ft)	+E/-W (ft)	Between Centres (ft)	Between Ellipses (ft)	Minimum Separation (ft)	Separation Factor	Warning
4,900.0	4,859.8	4,624.0	4,255.5	13.6	36.8	115.53	115.53	-796.8	1,478.2	1,361.4	1,336.2	25.27	53.867	
5,000.0	4,959.8	4,713.7	4,335.8	13.7	37.7	115.63	115.63	-816.0	1,513.0	1,405.8	1,380.0	25.78	54.538	
5,100.0	5,059.8	4,803.3	4,416.1	13.9	38.6	115.73	115.73	-835.2	1,547.8	1,450.1	1,423.8	26.28	55.179	
5,200.0	5,159.8	4,892.9	4,496.4	14.0	39.4	115.82	115.82	-854.4	1,582.6	1,494.4	1,467.6	26.78	55.793	
5,300.0	5,259.8	4,982.5	4,576.7	14.2	40.3	115.91	115.91	-873.6	1,617.5	1,538.7	1,511.4	27.29	56.380	
5,400.0	5,359.8	5,072.1	4,657.0	14.4	41.2	115.99	115.99	-892.8	1,652.3	1,583.0	1,555.2	27.80	56.944	
5,500.0	5,459.8	5,161.7	4,737.3	14.6	42.1	116.07	116.07	-912.0	1,687.1	1,627.4	1,599.1	28.31	57.484	
5,600.0	5,559.8	5,251.3	4,817.6	14.7	42.9	116.15	116.15	-931.2	1,721.9	1,671.7	1,642.9	28.82	58.003	
5,700.0	5,659.8	5,341.0	4,898.0	14.9	43.8	116.22	116.22	-950.4	1,756.8	1,716.0	1,686.7	29.33	58.501	
5,800.0	5,759.8	5,430.6	4,978.3	15.1	44.7	116.28	116.28	-969.6	1,791.6	1,760.4	1,730.5	29.85	58.980	
5,900.0	5,859.8	5,520.2	5,058.6	15.2	45.5	116.35	116.35	-988.8	1,826.4	1,804.7	1,774.4	30.36	59.441	
6,000.0	5,959.8	5,609.8	5,138.9	15.4	46.4	116.41	116.41	-1,008.0	1,861.2	1,849.1	1,818.2	30.88	59.884	
6,100.0	6,059.8	5,699.4	5,219.2	15.6	47.3	116.47	116.47	-1,027.2	1,896.1	1,893.4	1,862.0	31.39	60.311	
6,200.0	6,159.8	5,789.0	5,299.5	15.8	48.2	116.52	116.52	-1,046.4	1,930.9	1,937.8	1,905.8	31.91	60.722	
6,300.0	6,259.8	5,878.6	5,379.8	16.0	49.1	116.58	116.58	-1,065.6	1,965.7	1,980.3	1,947.5	32.43	61.133	
6,400.0	6,359.8	5,968.2	5,459.9	16.1	50.0	116.64	116.64	-1,084.8	2,000.5	2,013.8	1,979.9	32.95	61.544	
6,500.0	6,459.8	6,057.8	5,540.1	16.3	50.9	116.69	116.69	-1,104.0	2,035.3	2,049.1	2,016.6	33.47	61.955	
6,600.0	6,559.8	6,147.4	5,620.4	16.5	51.8	116.74	116.74	-1,123.2	2,070.1	2,083.9	2,049.1	33.99	62.366	
6,700.0	6,659.8	6,236.9	5,700.7	16.7	52.7	116.79	116.79	-1,142.4	2,104.9	2,118.7	2,083.9	34.51	62.777	
6,800.0	6,759.8	6,326.5	5,780.9	16.9	53.6	116.84	116.84	-1,161.6	2,139.7	2,153.5	2,118.7	35.03	63.188	
6,900.0	6,859.8	6,416.1	5,861.2	17.1	54.5	116.88	116.88	-1,180.8	2,174.5	2,188.3	2,153.5	35.55	63.599	
7,000.0	6,959.8	6,505.7	5,941.5	17.3	55.4	116.88	116.88	-1,199.9	2,209.3	2,223.1	2,188.3	36.07	64.010	
7,100.0	7,059.8	6,595.3	6,021.8	17.4	56.3	116.88	116.88	-1,219.1	2,244.1	2,257.9	2,223.1	36.59	64.421	
7,200.0	7,159.8	6,684.9	6,102.1	17.6	57.2	116.88	116.88	-1,238.2	2,278.9	2,292.7	2,257.9	37.11	64.832	
7,300.0	7,259.8	6,774.5	6,182.4	17.8	58.1	116.88	116.88	-1,257.4	2,313.7	2,327.5	2,292.7	37.63	65.243	
7,353.5	7,313.2	7,851.1	7,312.2	17.9	58.9	116.88	116.88	-1,276.6	2,348.5	2,362.3	2,327.5	38.15	65.654	
7,385.2	7,345.0	7,873.8	7,335.0	18.0	59.8	116.88	116.88	-1,295.8	2,383.3	2,397.1	2,362.3	38.67	66.065	

Company:	BAYSWATER EXPLORATION & PRODUCTION	Local Co-ordinate Reference:	Well Booth 2-26
Project:	SEC.26-T7N-R65W	TVD Reference:	WELL @ 4908.0ft (Original Well Elev)
Reference Site:	Booth 9 Pad Sec.26-T7N-R65W	MD Reference:	WELL @ 4908.0ft (Original Well Elev)
Site Error:	0.0ft	North Reference:	True
Reference Well:	Booth 2-26	Survey Calculation Method:	Minimum Curvature
Well Error:	0.0ft	Output errors are at	2.00 sigma
Reference Wellbore	Wellbore #1	Database:	Landmark
Reference Design:	Plan #1 (6-12-12)	Offset TVD Reference:	Offset Datum

Reference Depths are relative to WELL @ 4908.0ft (Original Well Elev) Coordinates are relative to: Booth 2-26
Offset Depths are relative to Offset Datum Coordinate System is US State Plane 1983, Colorado Northern Zone
Central Meridian is -105.500000 ° Grid Convergence at Surface is: 0.56°



Company:	BAYSWATER EXPLORATION & PRODUCTION	Local Co-ordinate Reference:	Well Booth 2-26
Project:	SEC.26-T7N-R65W	TVD Reference:	WELL @ 4908.0ft (Original Well Elev)
Reference Site:	Booth 9 Pad Sec.26-T7N-R65W	MD Reference:	WELL @ 4908.0ft (Original Well Elev)
Site Error:	0.0ft	North Reference:	True
Reference Well:	Booth 2-26	Survey Calculation Method:	Minimum Curvature
Well Error:	0.0ft	Output errors are at	2.00 sigma
Reference Wellbore	Wellbore #1	Database:	Landmark
Reference Design:	Plan #1 (6-12-12)	Offset TVD Reference:	Offset Datum

Reference Depths are relative to WELL @ 4908.0ft (Original Well Elev) Coordinates are relative to: Booth 2-26
Offset Depths are relative to Offset Datum Coordinate System is US State Plane 1983, Colorado Northern Zone
Central Meridian is -105.500000 ° Grid Convergence at Surface is: 0.56°

