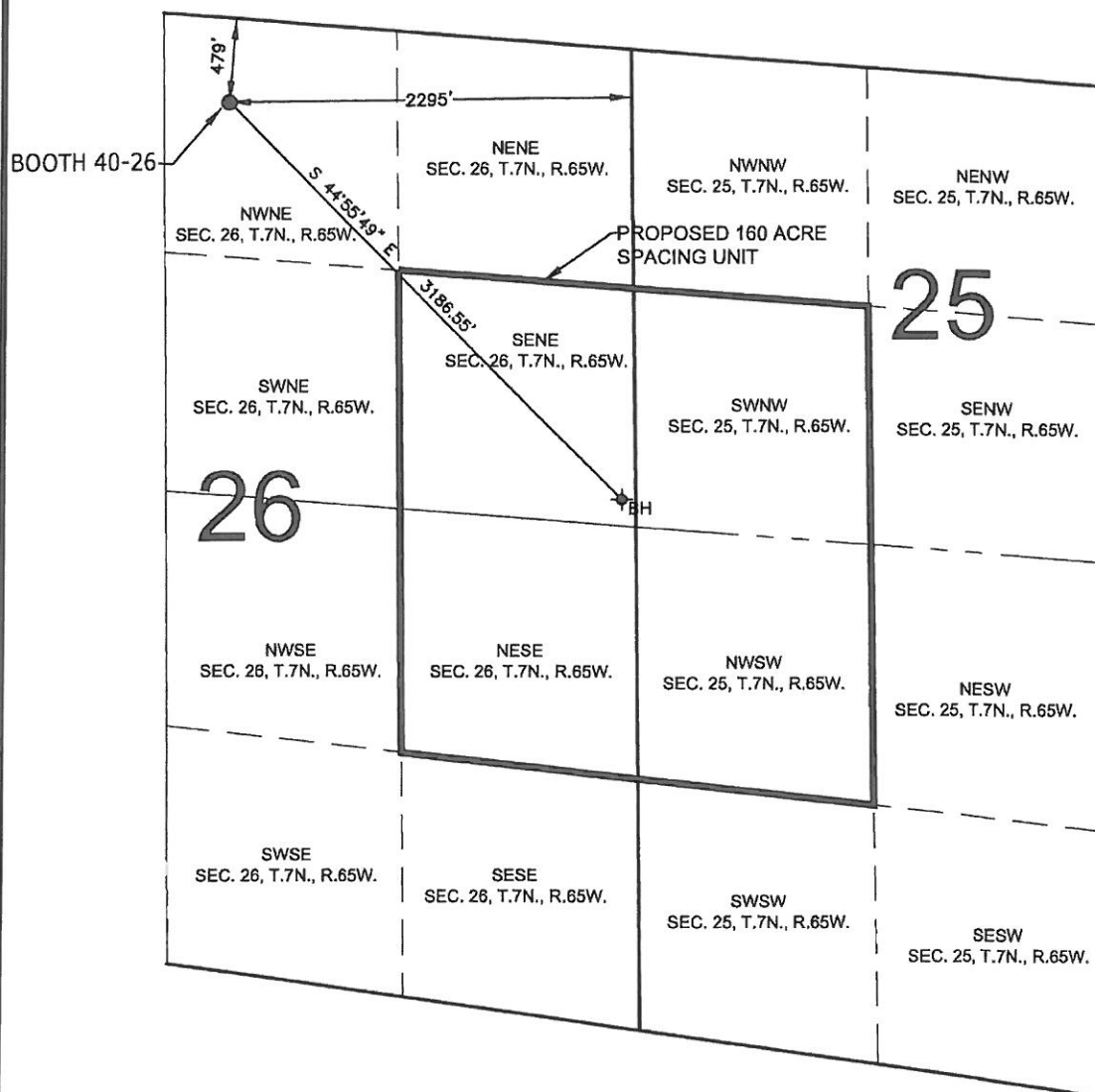


PROPOSED 318 Ae SPACING UNIT

SECTION 26, TOWNSHIP 7 NORTH, RANGE 65 WEST, 6TH P.M.



WELL BOOTH 40-26 TO BE LOCATED 479' FNL AND 2295' FEL, T7N, R65W, SEC. 26

SURFACE LOCATION

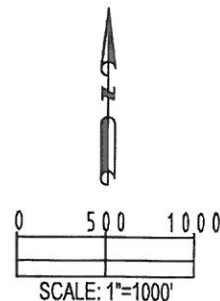
LATITUDE= 40.551591°
LONGITUDE= 104.628824°

BOTTOM HOLE LOCATION

LATITUDE= 40.545338°
LONGITUDE= 104.620807°

LEGEND

- = EXISTING MONUMENT
 = BOTTOM HOLE
 BH = BOTTOM HOLE
 = PROPOSED WELL
 = EXISTING WELL



PREPARED BY PFS Petroleum Field Services, LLC 1801 W. 13th Ave. Denver, CO 80204	FIELD DATE: 03-20-12	SURFACE LOCATION NW 1/4 NE 1/4, SEC. 26, T7N, R65W WELD COUNTY, COLORADO
	DRAWING DATE 07-26-12	
BY: CLM	CHECKED: RDW	