

Well Name: Booth 40-26

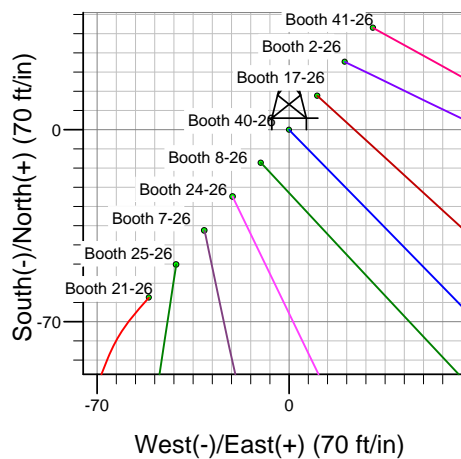
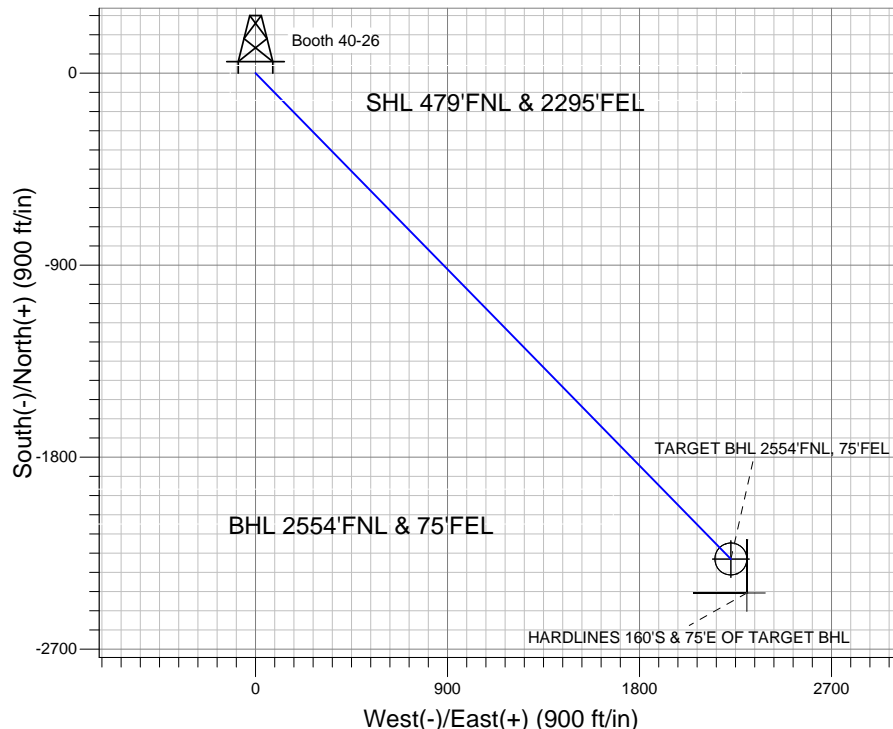
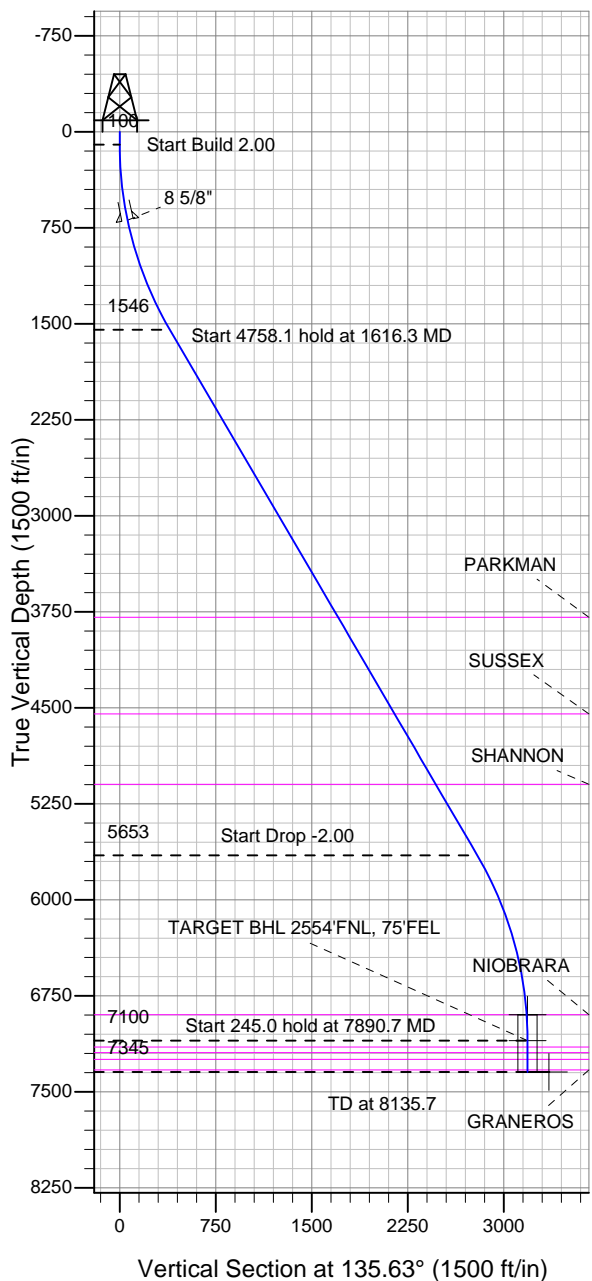
Surface Location: Booth 9 Pad Sec.26-T7N-R65W
 North American Datum 1983 US State Plane 1983 Colorado Northern Zone

Ground Elevation: 4893.0

+N/-S	+E/-W	Northing	Easting	Latitude	Longitude	Slot
0.0	0.0	1444974.67	3242085.09	40.551591	-104.628824	

Original Well Elev WELL @ 4909.0ft (Original Well Elev)

BAYSWATER EXPLORATION & PRODUCTION



Booth 9 Pad Sec.26-T7N-R65W
 Booth 40-26
 Plan #1 (5-21-12)
 10:24, May 31 2012



Azimuths to True North
 Magnetic North: 8.67°

Magnetic Field
 Strength: 53123.3snT
 Dip Angle: 67.16°
 Date: 5/31/2012
 Model: IGRF2010

WELLBORE TARGET DETAILS (LAT/LONG)

Name	TVD	+N/-S	+E/-W	Latitude	Longitude	Shape
TARGET CIRCLE 2554'FNL & 75'FEL	6898.0	-2278.0	2228.1	40.545338	-104.620807	Circle (Radius: 75.0)
TARGET BHL 2554'FNL, 75'FEL	7100.0	-2278.0	2228.1	40.545338	-104.620807	Point
HARDLINES 160'S & 75'E OF TARGET BHL	7345.0	-2438.0	2303.1	40.544899	-104.620537	Polygon

SECTION DETAILS

Sec	MD	Inc	Azi	TVD	+N/-S	+E/-W	DLeg	TFace	VSec	Target
1	0.0	0.00	0.00	0.0	0.0	0.0	0.00	0.00	0.0	
2	100.0	0.00	0.00	100.0	0.0	0.0	0.00	0.00	0.0	
3	1616.3	30.33	135.63	1546.5	-280.2	274.1	2.00	135.63	392.0	
4	6374.4	30.33	135.63	5653.5	-1997.7	1954.0	0.00	0.00	2794.5	
5	7890.7	0.00	0.00	7100.0	-2278.0	2228.1	2.00	180.00	3186.5	TARGET BHL 2554'FNL, 75'FEL
6	8135.7	0.00	0.00	7345.0	-2278.0	2228.1	0.00	0.00	3186.5	



Directional

BAYSWATER EXPLORATION & PRODUCTION

SEC.26-T7N-R65W

Booth 9 Pad Sec.26-T7N-R65W

Booth 40-26

Wellbore #1

Plan: Plan #1 (5-21-12)

Standard Planning Report

13 June, 2012

Database:	Landmark	Local Co-ordinate Reference:	Well Booth 40-26
Company:	BAYSWATER EXPLORATION & PRODUCTION	TVD Reference:	WELL @ 4909.0ft (Original Well Elev)
Project:	SEC.26-T7N-R65W	MD Reference:	WELL @ 4909.0ft (Original Well Elev)
Site:	Booth 9 Pad Sec.26-T7N-R65W	North Reference:	True
Well:	Booth 40-26	Survey Calculation Method:	Minimum Curvature
Wellbore:	Wellbore #1		
Design:	Plan #1 (5-21-12)		

Project	SEC.26-T7N-R65W, Weld County, CO		
Map System:	US State Plane 1983	System Datum:	Mean Sea Level
Geo Datum:	North American Datum 1983		Using Well Reference Point
Map Zone:	Colorado Northern Zone		Using geodetic scale factor

Site	Booth 9 Pad Sec.26-T7N-R65W		
Site Position:		Northing:	1,444,912.98 ft
From:	Lat/Long	Easting:	3,242,034.56 ft
Position Uncertainty:	0.0 ft	Slot Radius:	"
		Latitude:	40.551423
		Longitude:	-104.629008
		Grid Convergence:	0.56 °

Well	Booth 40-26		
Well Position	+N/-S	61.2 ft	Northing:
	+E/-W	51.1 ft	Easting:
Position Uncertainty		0.0 ft	Wellhead Elevation:
			ft
			Latitude:
			40.551591
			Longitude:
			-104.628824
			Ground Level:
			4,893.0 ft

Wellbore	Wellbore #1				
Magnetics	Model Name	Sample Date	Declination (°)	Dip Angle (°)	Field Strength (nT)
	IGRF2010	5/31/2012	8.68	67.16	53,123

Design	Plan #1 (5-21-12)			
Audit Notes:				
Version:	Phase:	PROTOTYPE	Tie On Depth:	0.0
Vertical Section:	Depth From (TVD) (ft)	+N/-S (ft)	+E/-W (ft)	Direction (°)
	0.0	0.0	0.0	135.63

Plan Sections										
Measured Depth (ft)	Inclination (°)	Azimuth (°)	Vertical Depth (ft)	+N/-S (ft)	+E/-W (ft)	Dogleg Rate (°/100ft)	Build Rate (°/100ft)	Turn Rate (°/100ft)	TFO (°)	Target
0.0	0.00	0.00	0.0	0.0	0.0	0.00	0.00	0.00	0.00	
100.0	0.00	0.00	100.0	0.0	0.0	0.00	0.00	0.00	0.00	
1,616.3	30.33	135.63	1,546.5	-280.2	274.1	2.00	2.00	0.00	135.63	
6,374.4	30.33	135.63	5,653.5	-1,997.7	1,954.0	0.00	0.00	0.00	0.00	
7,890.7	0.00	0.00	7,100.0	-2,278.0	2,228.1	2.00	-2.00	0.00	180.00	TARGET BHL 2554
8,135.7	0.00	0.00	7,345.0	-2,278.0	2,228.1	0.00	0.00	0.00	0.00	

Database:	Landmark	Local Co-ordinate Reference:	Well Booth 40-26
Company:	BAYSWATER EXPLORATION & PRODUCTION	TVD Reference:	WELL @ 4909.0ft (Original Well Elev)
Project:	SEC.26-T7N-R65W	MD Reference:	WELL @ 4909.0ft (Original Well Elev)
Site:	Booth 9 Pad Sec.26-T7N-R65W	North Reference:	True
Well:	Booth 40-26	Survey Calculation Method:	Minimum Curvature
Wellbore:	Wellbore #1		
Design:	Plan #1 (5-21-12)		

Planned Survey

Measured Depth (ft)	Inclination (°)	Azimuth (°)	Vertical Depth (ft)	+N/-S (ft)	+E/-W (ft)	Vertical Section (ft)	Dogleg Rate (°/100ft)	Build Rate (°/100ft)	Turn Rate (°/100ft)
0.0	0.00	0.00	0.0	0.0	0.0	0.0	0.00	0.00	0.00
40.0	0.00	0.00	40.0	0.0	0.0	0.0	0.00	0.00	0.00
80.0	0.00	0.00	80.0	0.0	0.0	0.0	0.00	0.00	0.00
100.0	0.00	0.00	100.0	0.0	0.0	0.0	0.00	0.00	0.00
120.0	0.40	135.63	120.0	0.0	0.0	0.1	2.00	2.00	0.00
160.0	1.20	135.63	160.0	-0.4	0.4	0.6	2.00	2.00	0.00
200.0	2.00	135.63	200.0	-1.2	1.2	1.7	2.00	2.00	0.00
240.0	2.80	135.63	239.9	-2.4	2.4	3.4	2.00	2.00	0.00
280.0	3.60	135.63	279.9	-4.0	4.0	5.7	2.00	2.00	0.00
320.0	4.40	135.63	319.8	-6.0	5.9	8.4	2.00	2.00	0.00
360.0	5.20	135.63	359.6	-8.4	8.2	11.8	2.00	2.00	0.00
400.0	6.00	135.63	399.5	-11.2	11.0	15.7	2.00	2.00	0.00
440.0	6.80	135.63	439.2	-14.4	14.1	20.2	2.00	2.00	0.00
480.0	7.60	135.63	478.9	-18.0	17.6	25.2	2.00	2.00	0.00
520.0	8.40	135.63	518.5	-22.0	21.5	30.7	2.00	2.00	0.00
560.0	9.20	135.63	558.0	-26.3	25.8	36.9	2.00	2.00	0.00
600.0	10.00	135.63	597.5	-31.1	30.4	43.5	2.00	2.00	0.00
640.0	10.80	135.63	636.8	-36.3	35.5	50.7	2.00	2.00	0.00
680.0	11.60	135.63	676.0	-41.8	40.9	58.5	2.00	2.00	0.00
694.3	11.89	135.63	690.0	-43.9	42.9	61.4	2.00	2.00	0.00
8 5/8"									
720.0	12.40	135.63	715.2	-47.8	46.7	66.8	2.00	2.00	0.00
760.0	13.20	135.63	754.2	-54.1	52.9	75.7	2.00	2.00	0.00
800.0	14.00	135.63	793.1	-60.8	59.5	85.1	2.00	2.00	0.00
840.0	14.80	135.63	831.8	-67.9	66.5	95.0	2.00	2.00	0.00
880.0	15.60	135.63	870.4	-75.4	73.8	105.5	2.00	2.00	0.00
920.0	16.40	135.63	908.8	-83.3	81.5	116.6	2.00	2.00	0.00
960.0	17.20	135.63	947.1	-91.6	89.6	128.1	2.00	2.00	0.00
1,000.0	18.00	135.63	985.3	-100.2	98.0	140.2	2.00	2.00	0.00
1,040.0	18.80	135.63	1,023.2	-109.3	106.9	152.8	2.00	2.00	0.00
1,080.0	19.60	135.63	1,061.0	-118.7	116.1	166.0	2.00	2.00	0.00
1,120.0	20.40	135.63	1,098.6	-128.4	125.6	179.7	2.00	2.00	0.00
1,160.0	21.20	135.63	1,136.0	-138.6	135.6	193.9	2.00	2.00	0.00
1,200.0	22.00	135.63	1,173.2	-149.1	145.9	208.6	2.00	2.00	0.00
1,240.0	22.80	135.63	1,210.2	-160.0	156.5	223.8	2.00	2.00	0.00
1,280.0	23.60	135.63	1,246.9	-171.3	167.5	239.6	2.00	2.00	0.00
1,320.0	24.40	135.63	1,283.5	-182.9	178.9	255.9	2.00	2.00	0.00
1,360.0	25.20	135.63	1,319.8	-194.9	190.6	272.6	2.00	2.00	0.00
1,400.0	26.00	135.63	1,355.8	-207.3	202.7	289.9	2.00	2.00	0.00
1,440.0	26.80	135.63	1,391.7	-220.0	215.2	307.7	2.00	2.00	0.00
1,480.0	27.60	135.63	1,427.2	-233.1	228.0	326.0	2.00	2.00	0.00
1,520.0	28.40	135.63	1,462.6	-246.5	241.1	344.8	2.00	2.00	0.00
1,560.0	29.20	135.63	1,497.6	-260.3	254.6	364.1	2.00	2.00	0.00
1,600.0	30.00	135.63	1,532.4	-274.4	268.4	383.8	2.00	2.00	0.00
1,616.3	30.33	135.63	1,546.5	-280.2	274.1	392.0	2.00	2.00	0.00
1,640.0	30.33	135.63	1,566.9	-288.8	282.5	404.0	0.00	0.00	0.00
1,680.0	30.33	135.63	1,601.5	-303.2	296.6	424.2	0.00	0.00	0.00
1,720.0	30.33	135.63	1,636.0	-317.7	310.7	444.4	0.00	0.00	0.00
1,760.0	30.33	135.63	1,670.5	-332.1	324.8	464.6	0.00	0.00	0.00
1,800.0	30.33	135.63	1,705.1	-346.5	339.0	484.8	0.00	0.00	0.00
1,840.0	30.33	135.63	1,739.6	-361.0	353.1	504.9	0.00	0.00	0.00
1,880.0	30.33	135.63	1,774.1	-375.4	367.2	525.1	0.00	0.00	0.00
1,920.0	30.33	135.63	1,808.6	-389.9	381.3	545.3	0.00	0.00	0.00

Database:	Landmark	Local Co-ordinate Reference:	Well Booth 40-26
Company:	BAYSWATER EXPLORATION & PRODUCTION	TVD Reference:	WELL @ 4909.0ft (Original Well Elev)
Project:	SEC.26-T7N-R65W	MD Reference:	WELL @ 4909.0ft (Original Well Elev)
Site:	Booth 9 Pad Sec.26-T7N-R65W	North Reference:	True
Well:	Booth 40-26	Survey Calculation Method:	Minimum Curvature
Wellbore:	Wellbore #1		
Design:	Plan #1 (5-21-12)		

Planned Survey									
Measured Depth (ft)	Inclination (°)	Azimuth (°)	Vertical Depth (ft)	+N/-S (ft)	+E/-W (ft)	Vertical Section (ft)	Dogleg Rate (°/100ft)	Build Rate (°/100ft)	Turn Rate (°/100ft)
1,960.0	30.33	135.63	1,843.2	-404.3	395.4	565.5	0.00	0.00	0.00
2,000.0	30.33	135.63	1,877.7	-418.7	409.6	585.7	0.00	0.00	0.00
2,040.0	30.33	135.63	1,912.2	-433.2	423.7	605.9	0.00	0.00	0.00
2,080.0	30.33	135.63	1,946.7	-447.6	437.8	626.1	0.00	0.00	0.00
2,120.0	30.33	135.63	1,981.3	-462.1	451.9	646.3	0.00	0.00	0.00
2,160.0	30.33	135.63	2,015.8	-476.5	466.1	666.5	0.00	0.00	0.00
2,200.0	30.33	135.63	2,050.3	-490.9	480.2	686.7	0.00	0.00	0.00
2,240.0	30.33	135.63	2,084.8	-505.4	494.3	706.9	0.00	0.00	0.00
2,280.0	30.33	135.63	2,119.4	-519.8	508.4	727.1	0.00	0.00	0.00
2,320.0	30.33	135.63	2,153.9	-534.2	522.5	747.3	0.00	0.00	0.00
2,360.0	30.33	135.63	2,188.4	-548.7	536.7	767.5	0.00	0.00	0.00
2,400.0	30.33	135.63	2,222.9	-563.1	550.8	787.7	0.00	0.00	0.00
2,440.0	30.33	135.63	2,257.5	-577.6	564.9	807.9	0.00	0.00	0.00
2,480.0	30.33	135.63	2,292.0	-592.0	579.0	828.1	0.00	0.00	0.00
2,520.0	30.33	135.63	2,326.5	-606.4	593.2	848.3	0.00	0.00	0.00
2,560.0	30.33	135.63	2,361.1	-620.9	607.3	868.5	0.00	0.00	0.00
2,600.0	30.33	135.63	2,395.6	-635.3	621.4	888.7	0.00	0.00	0.00
2,640.0	30.33	135.63	2,430.1	-649.8	635.5	908.9	0.00	0.00	0.00
2,680.0	30.33	135.63	2,464.6	-664.2	649.7	929.1	0.00	0.00	0.00
2,720.0	30.33	135.63	2,499.2	-678.6	663.8	949.3	0.00	0.00	0.00
2,760.0	30.33	135.63	2,533.7	-693.1	677.9	969.5	0.00	0.00	0.00
2,800.0	30.33	135.63	2,568.2	-707.5	692.0	989.7	0.00	0.00	0.00
2,840.0	30.33	135.63	2,602.7	-722.0	706.1	1,009.9	0.00	0.00	0.00
2,880.0	30.33	135.63	2,637.3	-736.4	720.3	1,030.1	0.00	0.00	0.00
2,920.0	30.33	135.63	2,671.8	-750.8	734.4	1,050.3	0.00	0.00	0.00
2,960.0	30.33	135.63	2,706.3	-765.3	748.5	1,070.5	0.00	0.00	0.00
3,000.0	30.33	135.63	2,740.8	-779.7	762.6	1,090.7	0.00	0.00	0.00
3,040.0	30.33	135.63	2,775.4	-794.1	776.8	1,110.9	0.00	0.00	0.00
3,080.0	30.33	135.63	2,809.9	-808.6	790.9	1,131.1	0.00	0.00	0.00
3,120.0	30.33	135.63	2,844.4	-823.0	805.0	1,151.3	0.00	0.00	0.00
3,160.0	30.33	135.63	2,879.0	-837.5	819.1	1,171.5	0.00	0.00	0.00
3,200.0	30.33	135.63	2,913.5	-851.9	833.2	1,191.6	0.00	0.00	0.00
3,240.0	30.33	135.63	2,948.0	-866.3	847.4	1,211.8	0.00	0.00	0.00
3,280.0	30.33	135.63	2,982.5	-880.8	861.5	1,232.0	0.00	0.00	0.00
3,320.0	30.33	135.63	3,017.1	-895.2	875.6	1,252.2	0.00	0.00	0.00
3,360.0	30.33	135.63	3,051.6	-909.7	889.7	1,272.4	0.00	0.00	0.00
3,400.0	30.33	135.63	3,086.1	-924.1	903.9	1,292.6	0.00	0.00	0.00
3,440.0	30.33	135.63	3,120.6	-938.5	918.0	1,312.8	0.00	0.00	0.00
3,480.0	30.33	135.63	3,155.2	-953.0	932.1	1,333.0	0.00	0.00	0.00
3,520.0	30.33	135.63	3,189.7	-967.4	946.2	1,353.2	0.00	0.00	0.00
3,560.0	30.33	135.63	3,224.2	-981.8	960.3	1,373.4	0.00	0.00	0.00
3,600.0	30.33	135.63	3,258.7	-996.3	974.5	1,393.6	0.00	0.00	0.00
3,640.0	30.33	135.63	3,293.3	-1,010.7	988.6	1,413.8	0.00	0.00	0.00
3,680.0	30.33	135.63	3,327.8	-1,025.2	1,002.7	1,434.0	0.00	0.00	0.00
3,720.0	30.33	135.63	3,362.3	-1,039.6	1,016.8	1,454.2	0.00	0.00	0.00
3,760.0	30.33	135.63	3,396.9	-1,054.0	1,031.0	1,474.4	0.00	0.00	0.00
3,800.0	30.33	135.63	3,431.4	-1,068.5	1,045.1	1,494.6	0.00	0.00	0.00
3,840.0	30.33	135.63	3,465.9	-1,082.9	1,059.2	1,514.8	0.00	0.00	0.00
3,880.0	30.33	135.63	3,500.4	-1,097.4	1,073.3	1,535.0	0.00	0.00	0.00
3,920.0	30.33	135.63	3,535.0	-1,111.8	1,087.4	1,555.2	0.00	0.00	0.00
3,960.0	30.33	135.63	3,569.5	-1,126.2	1,101.6	1,575.4	0.00	0.00	0.00
4,000.0	30.33	135.63	3,604.0	-1,140.7	1,115.7	1,595.6	0.00	0.00	0.00
4,040.0	30.33	135.63	3,638.5	-1,155.1	1,129.8	1,615.8	0.00	0.00	0.00

Database:	Landmark	Local Co-ordinate Reference:	Well Booth 40-26
Company:	BAYSWATER EXPLORATION & PRODUCTION	TVD Reference:	WELL @ 4909.0ft (Original Well Elev)
Project:	SEC.26-T7N-R65W	MD Reference:	WELL @ 4909.0ft (Original Well Elev)
Site:	Booth 9 Pad Sec.26-T7N-R65W	North Reference:	True
Well:	Booth 40-26	Survey Calculation Method:	Minimum Curvature
Wellbore:	Wellbore #1		
Design:	Plan #1 (5-21-12)		

Planned Survey

Measured Depth (ft)	Inclination (°)	Azimuth (°)	Vertical Depth (ft)	+N/-S (ft)	+E/-W (ft)	Vertical Section (ft)	Dogleg Rate (°/100ft)	Build Rate (°/100ft)	Turn Rate (°/100ft)
4,080.0	30.33	135.63	3,673.1	-1,169.5	1,143.9	1,636.0	0.00	0.00	0.00
4,120.0	30.33	135.63	3,707.6	-1,184.0	1,158.1	1,656.2	0.00	0.00	0.00
4,160.0	30.33	135.63	3,742.1	-1,198.4	1,172.2	1,676.4	0.00	0.00	0.00
4,200.0	30.33	135.63	3,776.6	-1,212.9	1,186.3	1,696.6	0.00	0.00	0.00
4,218.9	30.33	135.63	3,793.0	-1,219.7	1,193.0	1,706.1	0.00	0.00	0.00
PARKMAN									
4,240.0	30.33	135.63	3,811.2	-1,227.3	1,200.4	1,716.8	0.00	0.00	0.00
4,280.0	30.33	135.63	3,845.7	-1,241.7	1,214.5	1,737.0	0.00	0.00	0.00
4,320.0	30.33	135.63	3,880.2	-1,256.2	1,228.7	1,757.2	0.00	0.00	0.00
4,360.0	30.33	135.63	3,914.7	-1,270.6	1,242.8	1,777.4	0.00	0.00	0.00
4,400.0	30.33	135.63	3,949.3	-1,285.1	1,256.9	1,797.6	0.00	0.00	0.00
4,440.0	30.33	135.63	3,983.8	-1,299.5	1,271.0	1,817.8	0.00	0.00	0.00
4,480.0	30.33	135.63	4,018.3	-1,313.9	1,285.2	1,838.0	0.00	0.00	0.00
4,520.0	30.33	135.63	4,052.9	-1,328.4	1,299.3	1,858.1	0.00	0.00	0.00
4,560.0	30.33	135.63	4,087.4	-1,342.8	1,313.4	1,878.3	0.00	0.00	0.00
4,600.0	30.33	135.63	4,121.9	-1,357.3	1,327.5	1,898.5	0.00	0.00	0.00
4,640.0	30.33	135.63	4,156.4	-1,371.7	1,341.6	1,918.7	0.00	0.00	0.00
4,680.0	30.33	135.63	4,191.0	-1,386.1	1,355.8	1,938.9	0.00	0.00	0.00
4,720.0	30.33	135.63	4,225.5	-1,400.6	1,369.9	1,959.1	0.00	0.00	0.00
4,760.0	30.33	135.63	4,260.0	-1,415.0	1,384.0	1,979.3	0.00	0.00	0.00
4,800.0	30.33	135.63	4,294.5	-1,429.4	1,398.1	1,999.5	0.00	0.00	0.00
4,840.0	30.33	135.63	4,329.1	-1,443.9	1,412.3	2,019.7	0.00	0.00	0.00
4,880.0	30.33	135.63	4,363.6	-1,458.3	1,426.4	2,039.9	0.00	0.00	0.00
4,920.0	30.33	135.63	4,398.1	-1,472.8	1,440.5	2,060.1	0.00	0.00	0.00
4,960.0	30.33	135.63	4,432.6	-1,487.2	1,454.6	2,080.3	0.00	0.00	0.00
5,000.0	30.33	135.63	4,467.2	-1,501.6	1,468.8	2,100.5	0.00	0.00	0.00
5,040.0	30.33	135.63	4,501.7	-1,516.1	1,482.9	2,120.7	0.00	0.00	0.00
5,080.0	30.33	135.63	4,536.2	-1,530.5	1,497.0	2,140.9	0.00	0.00	0.00
5,093.6	30.33	135.63	4,548.0	-1,535.4	1,501.8	2,147.8	0.00	0.00	0.00
SUSSEX									
5,120.0	30.33	135.63	4,570.8	-1,545.0	1,511.1	2,161.1	0.00	0.00	0.00
5,160.0	30.33	135.63	4,605.3	-1,559.4	1,525.2	2,181.3	0.00	0.00	0.00
5,200.0	30.33	135.63	4,639.8	-1,573.8	1,539.4	2,201.5	0.00	0.00	0.00
5,240.0	30.33	135.63	4,674.3	-1,588.3	1,553.5	2,221.7	0.00	0.00	0.00
5,280.0	30.33	135.63	4,708.9	-1,602.7	1,567.6	2,241.9	0.00	0.00	0.00
5,320.0	30.33	135.63	4,743.4	-1,617.1	1,581.7	2,262.1	0.00	0.00	0.00
5,360.0	30.33	135.63	4,777.9	-1,631.6	1,595.9	2,282.3	0.00	0.00	0.00
5,400.0	30.33	135.63	4,812.4	-1,646.0	1,610.0	2,302.5	0.00	0.00	0.00
5,440.0	30.33	135.63	4,847.0	-1,660.5	1,624.1	2,322.7	0.00	0.00	0.00
5,480.0	30.33	135.63	4,881.5	-1,674.9	1,638.2	2,342.9	0.00	0.00	0.00
5,520.0	30.33	135.63	4,916.0	-1,689.3	1,652.3	2,363.1	0.00	0.00	0.00
5,560.0	30.33	135.63	4,950.5	-1,703.8	1,666.5	2,383.3	0.00	0.00	0.00
5,600.0	30.33	135.63	4,985.1	-1,718.2	1,680.6	2,403.5	0.00	0.00	0.00
5,640.0	30.33	135.63	5,019.6	-1,732.7	1,694.7	2,423.7	0.00	0.00	0.00
5,680.0	30.33	135.63	5,054.1	-1,747.1	1,708.8	2,443.9	0.00	0.00	0.00
5,720.0	30.33	135.63	5,088.7	-1,761.5	1,723.0	2,464.1	0.00	0.00	0.00
5,730.8	30.33	135.63	5,098.0	-1,765.4	1,726.8	2,469.5	0.00	0.00	0.00
SHANNON									
5,760.0	30.33	135.63	5,123.2	-1,776.0	1,737.1	2,484.3	0.00	0.00	0.00
5,800.0	30.33	135.63	5,157.7	-1,790.4	1,751.2	2,504.5	0.00	0.00	0.00
5,840.0	30.33	135.63	5,192.2	-1,804.8	1,765.3	2,524.6	0.00	0.00	0.00
5,880.0	30.33	135.63	5,226.8	-1,819.3	1,779.4	2,544.8	0.00	0.00	0.00
5,920.0	30.33	135.63	5,261.3	-1,833.7	1,793.6	2,565.0	0.00	0.00	0.00

Database:	Landmark	Local Co-ordinate Reference:	Well Booth 40-26
Company:	BAYSWATER EXPLORATION & PRODUCTION	TVD Reference:	WELL @ 4909.0ft (Original Well Elev)
Project:	SEC.26-T7N-R65W	MD Reference:	WELL @ 4909.0ft (Original Well Elev)
Site:	Booth 9 Pad Sec.26-T7N-R65W	North Reference:	True
Well:	Booth 40-26	Survey Calculation Method:	Minimum Curvature
Wellbore:	Wellbore #1		
Design:	Plan #1 (5-21-12)		

Planned Survey									
Measured Depth (ft)	Inclination (°)	Azimuth (°)	Vertical Depth (ft)	+N/-S (ft)	+E/-W (ft)	Vertical Section (ft)	Dogleg Rate (°/100ft)	Build Rate (°/100ft)	Turn Rate (°/100ft)
5,960.0	30.33	135.63	5,295.8	-1,848.2	1,807.7	2,585.2	0.00	0.00	0.00
6,000.0	30.33	135.63	5,330.3	-1,862.6	1,821.8	2,605.4	0.00	0.00	0.00
6,040.0	30.33	135.63	5,364.9	-1,877.0	1,835.9	2,625.6	0.00	0.00	0.00
6,080.0	30.33	135.63	5,399.4	-1,891.5	1,850.1	2,645.8	0.00	0.00	0.00
6,120.0	30.33	135.63	5,433.9	-1,905.9	1,864.2	2,666.0	0.00	0.00	0.00
6,160.0	30.33	135.63	5,468.4	-1,920.4	1,878.3	2,686.2	0.00	0.00	0.00
6,200.0	30.33	135.63	5,503.0	-1,934.8	1,892.4	2,706.4	0.00	0.00	0.00
6,240.0	30.33	135.63	5,537.5	-1,949.2	1,906.5	2,726.6	0.00	0.00	0.00
6,280.0	30.33	135.63	5,572.0	-1,963.7	1,920.7	2,746.8	0.00	0.00	0.00
6,320.0	30.33	135.63	5,606.5	-1,978.1	1,934.8	2,767.0	0.00	0.00	0.00
6,360.0	30.33	135.63	5,641.1	-1,992.6	1,948.9	2,787.2	0.00	0.00	0.00
6,374.4	30.33	135.63	5,653.5	-1,997.7	1,954.0	2,794.5	0.00	0.00	0.00
6,400.0	29.81	135.63	5,675.7	-2,006.9	1,963.0	2,807.3	2.00	-2.00	0.00
6,440.0	29.01	135.63	5,710.5	-2,021.0	1,976.7	2,827.0	2.00	-2.00	0.00
6,480.0	28.21	135.63	5,745.6	-2,034.7	1,990.1	2,846.1	2.00	-2.00	0.00
6,520.0	27.41	135.63	5,781.0	-2,048.0	2,003.1	2,864.8	2.00	-2.00	0.00
6,560.0	26.61	135.63	5,816.6	-2,061.0	2,015.9	2,882.9	2.00	-2.00	0.00
6,600.0	25.81	135.63	5,852.5	-2,073.6	2,028.2	2,900.6	2.00	-2.00	0.00
6,640.0	25.01	135.63	5,888.6	-2,085.9	2,040.2	2,917.8	2.00	-2.00	0.00
6,680.0	24.21	135.63	5,925.0	-2,097.8	2,051.9	2,934.4	2.00	-2.00	0.00
6,720.0	23.41	135.63	5,961.6	-2,109.3	2,063.2	2,950.6	2.00	-2.00	0.00
6,760.0	22.61	135.63	5,998.4	-2,120.5	2,074.1	2,966.2	2.00	-2.00	0.00
6,800.0	21.81	135.63	6,035.5	-2,131.3	2,084.7	2,981.3	2.00	-2.00	0.00
6,840.0	21.01	135.63	6,072.7	-2,141.8	2,094.9	2,996.0	2.00	-2.00	0.00
6,880.0	20.21	135.63	6,110.1	-2,151.8	2,104.7	3,010.0	2.00	-2.00	0.00
6,920.0	19.41	135.63	6,147.8	-2,161.5	2,114.2	3,023.6	2.00	-2.00	0.00
6,960.0	18.61	135.63	6,185.6	-2,170.9	2,123.3	3,036.6	2.00	-2.00	0.00
7,000.0	17.81	135.63	6,223.6	-2,179.8	2,132.1	3,049.1	2.00	-2.00	0.00
7,040.0	17.01	135.63	6,261.7	-2,188.4	2,140.4	3,061.1	2.00	-2.00	0.00
7,080.0	16.21	135.63	6,300.1	-2,196.5	2,148.4	3,072.5	2.00	-2.00	0.00
7,120.0	15.41	135.63	6,338.6	-2,204.3	2,156.0	3,083.4	2.00	-2.00	0.00
7,160.0	14.61	135.63	6,377.2	-2,211.7	2,163.3	3,093.8	2.00	-2.00	0.00
7,200.0	13.81	135.63	6,416.0	-2,218.8	2,170.2	3,103.6	2.00	-2.00	0.00
7,240.0	13.01	135.63	6,454.9	-2,225.4	2,176.6	3,112.9	2.00	-2.00	0.00
7,280.0	12.21	135.63	6,493.9	-2,231.6	2,182.8	3,121.6	2.00	-2.00	0.00
7,320.0	11.41	135.63	6,533.1	-2,237.5	2,188.5	3,129.8	2.00	-2.00	0.00
7,360.0	10.61	135.63	6,572.3	-2,242.9	2,193.8	3,137.5	2.00	-2.00	0.00
7,400.0	9.81	135.63	6,611.7	-2,248.0	2,198.8	3,144.6	2.00	-2.00	0.00
7,440.0	9.01	135.63	6,651.1	-2,252.7	2,203.4	3,151.1	2.00	-2.00	0.00
7,480.0	8.21	135.63	6,690.7	-2,257.0	2,207.6	3,157.1	2.00	-2.00	0.00
7,520.0	7.41	135.63	6,730.3	-2,260.9	2,211.4	3,162.5	2.00	-2.00	0.00
7,560.0	6.61	135.63	6,770.0	-2,264.4	2,214.8	3,167.4	2.00	-2.00	0.00
7,600.0	5.81	135.63	6,809.8	-2,267.5	2,217.8	3,171.7	2.00	-2.00	0.00
7,640.0	5.01	135.63	6,849.6	-2,270.2	2,220.4	3,175.5	2.00	-2.00	0.00
7,680.0	4.21	135.63	6,889.5	-2,272.5	2,222.7	3,178.7	2.00	-2.00	0.00
7,688.5	4.04	135.63	6,898.0	-2,272.9	2,223.1	3,179.4	2.00	-2.00	0.00
NIORARA									
7,689.0	4.03	135.63	6,898.5	-2,272.9	2,223.1	3,179.4	2.00	-2.00	0.00
TARGET CIRCLE 2554'FNL & 75'FEL									
7,720.0	3.41	135.63	6,929.4	-2,274.4	2,224.5	3,181.4	2.00	-2.00	0.00
7,760.0	2.61	135.63	6,969.3	-2,275.9	2,226.0	3,183.5	2.00	-2.00	0.00
7,800.0	1.81	135.63	7,009.3	-2,277.0	2,227.1	3,185.0	2.00	-2.00	0.00
7,840.0	1.01	135.63	7,049.3	-2,277.7	2,227.8	3,186.0	2.00	-2.00	0.00

Database:	Landmark	Local Co-ordinate Reference:	Well Booth 40-26
Company:	BAYSWATER EXPLORATION & PRODUCTION	TVD Reference:	WELL @ 4909.0ft (Original Well Elev)
Project:	SEC.26-T7N-R65W	MD Reference:	WELL @ 4909.0ft (Original Well Elev)
Site:	Booth 9 Pad Sec.26-T7N-R65W	North Reference:	True
Well:	Booth 40-26	Survey Calculation Method:	Minimum Curvature
Wellbore:	Wellbore #1		
Design:	Plan #1 (5-21-12)		

Planned Survey

Measured Depth (ft)	Inclination (°)	Azimuth (°)	Vertical Depth (ft)	+N/-S (ft)	+E/-W (ft)	Vertical Section (ft)	Dogleg Rate (°/100ft)	Build Rate (°/100ft)	Turn Rate (°/100ft)
7,880.0	0.21	135.63	7,089.3	-2,278.0	2,228.1	3,186.5	2.00	-2.00	0.00
7,890.7	0.00	0.00	7,100.0	-2,278.0	2,228.1	3,186.5	2.00	-2.00	0.00
TARGET BHL 2554'FNL, 75'FEL									
7,920.0	0.00	0.00	7,129.3	-2,278.0	2,228.1	3,186.5	0.00	0.00	0.00
7,940.7	0.00	0.00	7,150.0	-2,278.0	2,228.1	3,186.5	0.00	0.00	0.00
FORT HAYS									
7,960.0	0.00	0.00	7,169.3	-2,278.0	2,228.1	3,186.5	0.00	0.00	0.00
7,984.7	0.00	0.00	7,194.0	-2,278.0	2,228.1	3,186.5	0.00	0.00	0.00
CODELL									
8,000.0	0.00	0.00	7,209.3	-2,278.0	2,228.1	3,186.5	0.00	0.00	0.00
8,036.7	0.00	0.00	7,246.0	-2,278.0	2,228.1	3,186.5	0.00	0.00	0.00
GREENHORN									
8,040.0	0.00	0.00	7,249.3	-2,278.0	2,228.1	3,186.5	0.00	0.00	0.00
8,080.0	0.00	0.00	7,289.3	-2,278.0	2,228.1	3,186.5	0.00	0.00	0.00
8,118.7	0.00	0.00	7,328.0	-2,278.0	2,228.1	3,186.5	0.00	0.00	0.00
GRANEROS									
8,120.0	0.00	0.00	7,329.3	-2,278.0	2,228.1	3,186.5	0.00	0.00	0.00
8,135.7	0.00	0.00	7,345.0	-2,278.0	2,228.1	3,186.5	0.00	0.00	0.00
HARDLINES 160'S & 75'E OF TARGET BHL									

Casing Points

Measured Depth (ft)	Vertical Depth (ft)	Name	Casing Diameter (")	Hole Diameter (")
694.3	690.0	8 5/8"	8-5/8	12-1/4

Formations

Measured Depth (ft)	Vertical Depth (ft)	Name	Lithology	Dip (°)	Dip Direction (°)
4,218.9	3,793.0	PARKMAN		0.00	
5,093.6	4,548.0	SUSSEX		0.00	
5,730.8	5,098.0	SHANNON		0.00	
7,688.5	6,898.0	NIOBRARA		0.00	
7,940.7	7,150.0	FORT HAYS		0.00	
7,984.7	7,194.0	CODELL		0.00	
8,036.7	7,246.0	GREENHORN		0.00	
8,118.7	7,328.0	GRANEROS		0.00	



Directional

BAYSWATER EXPLORATION & PRODUCTION

SEC.26-T7N-R65W

Booth 9 Pad Sec.26-T7N-R65W

Booth 40-26

Wellbore #1

Plan #1 (5-21-12)

Anticollision Report

31 May, 2012

Company:	BAYSWATER EXPLORATION & PRODUCTION	Local Co-ordinate Reference:	Well Booth 40-26
Project:	SEC.26-T7N-R65W	TVD Reference:	WELL @ 4909.0ft (Original Well Elev)
Reference Site:	Booth 9 Pad Sec.26-T7N-R65W	MD Reference:	WELL @ 4909.0ft (Original Well Elev)
Site Error:	0.0ft	North Reference:	True
Reference Well:	Booth 40-26	Survey Calculation Method:	Minimum Curvature
Well Error:	0.0ft	Output errors are at	2.00 sigma
Reference Wellbore	Wellbore #1	Database:	Landmark
Reference Design:	Plan #1 (5-21-12)	Offset TVD Reference:	Offset Datum

Offset Design Booth 9 Pad Sec.26-T7N-R65W - Booth 17-26 - Wellbore #1 - Plan #1 (5-21-12)												Offset Site Error: 0.0 ft	
Survey Program: 0-MWD												Offset Well Error: 0.0 ft	
Reference		Offset		Semi Major Axis			Distance					Warning	
Measured Depth	Vertical Depth	Measured Depth	Vertical Depth	Reference	Offset	Highside Toolface	Offset Wellbore Centre		Between Centres	Between Ellipses	Minimum Separation		Separation Factor
(ft)	(ft)	(ft)	(ft)	(ft)	(ft)	(°)	+N/-S (ft)	+E/-W (ft)	(ft)	(ft)	(ft)		
2,000.0	1,877.7	1,994.3	1,950.6	12.8	7.9	-172.09	-215.9	260.3	262.5	251.8	10.70	24.542	
2,100.0	1,964.0	2,091.4	2,043.7	13.9	8.5	-172.43	-234.7	280.8	286.2	274.8	11.39	25.131	
2,200.0	2,050.3	2,188.6	2,136.8	14.9	9.1	-172.71	-253.5	301.4	309.8	297.7	12.08	25.646	
2,300.0	2,136.6	2,285.7	2,229.8	16.0	9.7	-172.95	-272.3	322.0	333.5	320.7	12.78	26.100	
2,400.0	2,222.9	2,382.9	2,322.9	17.1	10.3	-173.16	-291.1	342.5	357.2	343.7	13.48	26.503	
2,500.0	2,309.3	2,480.0	2,416.0	18.2	10.9	-173.34	-309.8	363.1	380.9	366.7	14.18	26.862	
2,600.0	2,395.6	2,577.2	2,509.0	19.3	11.5	-173.50	-328.6	383.7	404.6	389.7	14.88	27.185	
2,700.0	2,481.9	2,674.3	2,602.1	20.4	12.1	-173.64	-347.4	404.2	428.3	412.7	15.59	27.477	
2,800.0	2,568.2	2,771.5	2,695.2	21.5	12.7	-173.77	-366.2	424.8	452.0	435.7	16.29	27.741	
2,900.0	2,654.5	2,868.6	2,788.2	22.6	13.3	-173.89	-385.0	445.4	475.7	458.7	17.00	27.982	
3,000.0	2,740.8	2,965.7	2,881.3	23.7	13.9	-173.99	-403.8	465.9	499.4	481.7	17.71	28.202	
3,100.0	2,827.2	3,062.9	2,974.4	24.8	14.4	-174.09	-422.6	486.5	523.1	504.7	18.42	28.404	
3,200.0	2,913.5	3,160.0	3,067.4	25.9	15.0	-174.18	-441.3	507.1	546.8	527.6	19.12	28.590	
3,300.0	2,999.8	3,257.2	3,160.5	26.9	15.6	-174.26	-460.1	527.6	570.5	550.6	19.83	28.761	
3,400.0	3,086.1	3,354.3	3,253.6	28.0	16.2	-174.33	-478.9	548.2	594.2	573.6	20.55	28.920	
3,500.0	3,172.4	3,451.5	3,346.6	29.1	16.8	-174.40	-497.7	568.8	617.9	596.6	21.26	29.068	
3,600.0	3,258.7	3,548.6	3,439.7	30.2	17.4	-174.46	-516.5	589.3	641.6	619.6	21.97	29.205	
3,700.0	3,345.1	3,645.8	3,532.8	31.3	18.0	-174.52	-535.3	609.9	665.3	642.6	22.68	29.333	
3,800.0	3,431.4	3,742.9	3,625.8	32.4	18.6	-174.57	-554.1	630.5	689.0	665.6	23.39	29.453	
3,900.0	3,517.7	3,840.1	3,718.9	33.5	19.2	-174.62	-572.8	651.0	712.7	688.6	24.11	29.565	
4,000.0	3,604.0	3,937.2	3,812.0	34.6	19.8	-174.67	-591.6	671.6	736.4	711.6	24.82	29.671	
4,100.0	3,690.3	4,034.4	3,905.0	35.7	20.4	-174.72	-610.4	692.2	760.1	734.6	25.53	29.770	
4,200.0	3,776.6	4,131.5	3,998.1	36.8	21.0	-174.76	-629.2	712.7	783.8	757.6	26.25	29.863	
4,300.0	3,863.0	4,228.7	4,091.2	37.9	21.6	-174.80	-648.0	733.3	807.6	780.6	26.96	29.952	
4,400.0	3,949.3	4,325.8	4,184.2	39.0	22.2	-174.83	-666.8	753.9	831.3	803.6	27.68	30.035	
4,500.0	4,035.6	4,422.9	4,277.3	40.1	22.8	-174.87	-685.6	774.5	855.0	826.6	28.39	30.114	
4,600.0	4,121.9	4,520.1	4,370.4	41.2	23.4	-174.90	-704.3	795.0	878.7	849.6	29.11	30.189	
4,700.0	4,208.2	4,617.2	4,463.4	42.3	24.0	-174.93	-723.1	815.6	902.4	872.6	29.82	30.260	
4,800.0	4,294.5	4,714.4	4,556.5	43.4	24.6	-174.96	-741.9	836.2	926.1	895.6	30.54	30.327	
4,900.0	4,380.9	4,811.5	4,649.6	44.5	25.2	-174.99	-760.7	856.7	949.8	918.6	31.25	30.391	
5,000.0	4,467.2	4,908.7	4,742.7	45.6	25.8	-175.02	-779.5	877.3	973.5	941.6	31.97	30.452	
5,100.0	4,553.5	5,005.8	4,835.7	46.7	26.4	-175.04	-798.3	897.9	997.3	964.6	32.69	30.511	
5,200.0	4,639.8	5,103.0	4,928.8	47.8	27.0	-175.07	-817.0	918.4	1,021.0	987.6	33.40	30.566	
5,300.0	4,726.1	5,188.1	5,010.4	48.9	27.5	-175.09	-833.4	936.3	1,044.9	1,010.9	34.08	30.666	
5,400.0	4,812.4	5,258.8	5,078.6	50.0	27.8	-175.12	-846.0	950.1	1,070.9	1,036.3	34.68	30.881	
5,500.0	4,898.8	5,328.6	5,146.3	51.1	28.1	-175.16	-857.3	962.4	1,099.3	1,064.0	35.27	31.168	
5,600.0	4,985.1	5,400.0	5,216.1	52.2	28.3	-175.21	-867.7	973.8	1,129.9	1,094.1	35.86	31.513	
5,700.0	5,071.4	5,464.9	5,279.7	53.2	28.5	-175.27	-876.1	983.1	1,162.8	1,126.4	36.41	31.932	
5,800.0	5,157.7	5,531.4	5,345.2	54.3	28.7	-175.34	-883.7	991.4	1,197.9	1,160.9	36.97	32.401	
5,900.0	5,244.0	5,600.0	5,413.1	55.4	28.9	-175.41	-890.5	998.9	1,235.1	1,197.5	37.52	32.917	
6,000.0	5,330.3	5,660.8	5,473.4	56.5	29.0	-175.48	-895.6	1,004.5	1,274.3	1,236.3	38.05	33.495	
6,100.0	5,416.7	5,723.6	5,535.9	57.6	29.2	-175.57	-900.0	1,009.2	1,315.6	1,277.0	38.57	34.111	
6,200.0	5,503.0	5,800.0	5,612.1	58.7	29.3	-175.67	-904.1	1,013.7	1,358.9	1,319.8	39.10	34.753	
6,300.0	5,589.3	5,845.6	5,657.6	59.8	29.4	-175.73	-905.8	1,015.6	1,404.0	1,364.4	39.59	35.466	
6,374.4	5,653.5	5,900.0	5,711.9	60.6	29.4	-175.82	-907.3	1,017.2	1,438.8	1,398.8	39.97	35.996	
6,400.0	5,675.7	5,900.0	5,711.9	60.9	29.4	-175.83	-907.3	1,017.2	1,450.8	1,410.7	40.11	36.171	
6,500.0	5,763.3	5,963.2	5,775.2	61.7	29.5	-176.00	-908.1	1,018.2	1,497.3	1,456.6	40.69	36.801	
6,600.0	5,852.5	6,039.6	5,851.5	62.5	29.6	-176.17	-908.2	1,018.2	1,542.1	1,500.9	41.22	37.416	
6,700.0	5,943.3	6,130.3	5,942.3	63.2	29.7	-176.33	-908.2	1,018.2	1,584.0	1,542.3	41.70	37.985	
6,800.0	6,035.5	6,222.5	6,034.5	63.9	29.7	-176.47	-908.2	1,018.2	1,622.7	1,580.6	42.13	38.514	
6,900.0	6,128.9	6,316.0	6,127.9	64.5	29.8	-176.59	-908.2	1,018.2	1,658.2	1,615.7	42.51	39.008	

CC - Min centre to center distance or convergent point, SF - min separation factor, ES - min ellipse separation

Company:	BAYSWATER EXPLORATION & PRODUCTION	Local Co-ordinate Reference:	Well Booth 40-26
Project:	SEC.26-T7N-R65W	TVD Reference:	WELL @ 4909.0ft (Original Well Elev)
Reference Site:	Booth 9 Pad Sec.26-T7N-R65W	MD Reference:	WELL @ 4909.0ft (Original Well Elev)
Site Error:	0.0ft	North Reference:	True
Reference Well:	Booth 40-26	Survey Calculation Method:	Minimum Curvature
Well Error:	0.0ft	Output errors are at	2.00 sigma
Reference Wellbore	Wellbore #1	Database:	Landmark
Reference Design:	Plan #1 (5-21-12)	Offset TVD Reference:	Offset Datum

Offset Design Booth 9 Pad Sec.26-T7N-R65W - Booth 17-26 - Wellbore #1 - Plan #1 (5-21-12)												Offset Site Error:	0.0 ft
Survey Program: 0-MWD												Offset Well Error:	0.0 ft
Measured Depth (ft)	Vertical Depth (ft)	Measured Depth (ft)	Vertical Depth (ft)	Reference	Offset	Highside Toolface (°)	Offset Wellbore Centre +N/-S (ft)	+E/-W (ft)	Between Centres (ft)	Between Ellipses (ft)	Minimum Separation (ft)	Separation Factor	Warning
7,000.0	6,223.6	6,410.6	6,222.6	65.0	29.9	-176.69	-908.2	1,018.2	1,690.4	1,647.6	42.83	39.468	
7,100.0	6,319.3	6,506.4	6,318.3	65.5	30.0	-176.78	-908.2	1,018.2	1,719.3	1,676.2	43.09	39.898	
7,200.0	6,416.0	6,603.0	6,415.0	65.9	30.1	-176.86	-908.2	1,018.2	1,744.8	1,701.5	43.30	40.300	
7,300.0	6,513.5	6,700.5	6,512.5	66.3	30.2	-176.92	-908.2	1,018.2	1,767.0	1,723.5	43.44	40.676	
7,400.0	6,611.7	6,798.8	6,610.7	66.6	30.2	-176.97	-908.2	1,018.2	1,785.7	1,742.2	43.52	41.028	
7,500.0	6,710.5	6,897.6	6,709.5	66.9	30.3	-177.02	-908.2	1,018.2	1,801.0	1,757.5	43.55	41.357	
7,600.0	6,809.8	6,996.9	6,808.8	67.1	30.4	-177.05	-908.2	1,018.2	1,812.8	1,769.3	43.51	41.663	
7,700.0	6,909.4	7,096.5	6,908.4	67.2	30.5	-177.07	-908.2	1,018.2	1,821.2	1,777.8	43.42	41.948	
7,800.0	7,009.3	7,196.4	7,008.3	67.3	30.6	-177.08	-908.2	1,018.2	1,826.1	1,782.9	43.26	42.213	
7,890.7	7,100.0	7,287.1	7,099.0	67.4	30.7	-41.45	-908.2	1,018.2	1,827.6	1,784.5	43.07	42.428	
7,900.0	7,109.3	7,296.4	7,108.3	67.4	30.7	-41.45	-908.2	1,018.2	1,827.6	1,784.5	43.10	42.402	
8,000.0	7,209.3	7,396.4	7,208.3	67.4	30.8	-41.45	-908.2	1,018.2	1,827.6	1,784.2	43.37	42.135	
8,100.0	7,309.3	7,496.4	7,308.3	67.5	30.9	-41.45	-908.2	1,018.2	1,827.6	1,783.9	43.65	41.868	
8,116.1	7,325.4	7,512.5	7,324.4	67.5	30.9	-41.45	-908.2	1,018.2	1,827.6	1,783.9	43.70	41.825	
8,135.7	7,345.0	7,518.1	7,330.0	67.5	31.0	-41.45	-908.2	1,018.2	1,827.6	1,783.9	43.73	41.797	

Company:	BAYSWATER EXPLORATION & PRODUCTION	Local Co-ordinate Reference:	Well Booth 40-26
Project:	SEC.26-T7N-R65W	TVD Reference:	WELL @ 4909.0ft (Original Well Elev)
Reference Site:	Booth 9 Pad Sec.26-T7N-R65W	MD Reference:	WELL @ 4909.0ft (Original Well Elev)
Site Error:	0.0ft	North Reference:	True
Reference Well:	Booth 40-26	Survey Calculation Method:	Minimum Curvature
Well Error:	0.0ft	Output errors are at	2.00 sigma
Reference Wellbore	Wellbore #1	Database:	Landmark
Reference Design:	Plan #1 (5-21-12)	Offset TVD Reference:	Offset Datum

Offset Design Booth 9 Pad Sec.26-T7N-R65W - Booth 8-26 - Wellbore #1 - Plan #1 (5-21-12)													Offset Site Error:	0.0 ft
Survey Program: 0-MWD													Offset Well Error:	0.0 ft
Measured Depth (ft)	Vertical Depth (ft)	Measured Depth (ft)	Vertical Depth (ft)	Reference (ft)	Offset (ft)	Highside Toolface (°)	Offset Wellbore Centre +N/-S (ft)	Offset Wellbore Centre +E/-W (ft)	Between Centres (ft)	Between Ellipses (ft)	Minimum Separation (ft)	Separation Factor	Warning	
0.0	0.0	0.0	0.0	0.0	0.0	-139.46	-12.0	-10.3	15.8	15.8	0.00	N/A		
100.0	100.0	100.0	100.0	0.1	0.1	-139.46	-12.0	-10.3	15.8	15.6	0.22	70.383		
189.7	189.7	189.7	189.7	0.3	0.3	90.00	-12.0	-10.3	15.8	15.1	0.61	25.647 CC		
200.0	200.0	200.0	200.0	0.3	0.3	91.24	-12.0	-10.3	15.8	15.1	0.66	23.919 ES		
300.0	299.8	299.8	299.8	0.6	0.6	109.43	-12.0	-10.3	16.7	15.6	1.11	15.030		
400.0	399.5	399.9	399.9	0.8	0.8	128.40	-13.3	-9.1	20.2	18.6	1.57	12.857		
500.0	498.7	500.2	500.0	1.1	1.0	140.75	-17.1	-5.5	25.2	23.2	2.02	12.445		
600.0	597.5	600.8	600.2	1.5	1.2	148.61	-23.6	0.5	31.0	28.5	2.50	12.411		
700.0	695.6	701.6	700.2	1.9	1.5	153.80	-32.6	8.9	37.2	34.2	2.99	12.447		
800.0	793.1	802.6	800.0	2.3	1.8	157.37	-44.2	19.7	43.7	40.2	3.51	12.461		
900.0	889.6	903.9	899.4	2.9	2.2	159.91	-58.4	33.0	50.2	46.2	4.04	12.427		
1,000.0	985.3	1,005.4	998.3	3.5	2.7	161.76	-75.2	48.7	56.9	52.3	4.61	12.342		
1,100.0	1,079.8	1,107.2	1,096.6	4.1	3.2	163.14	-94.6	66.8	63.5	58.3	5.20	12.209		
1,200.0	1,173.2	1,209.3	1,194.1	4.9	3.8	164.18	-116.6	87.4	70.1	64.3	5.82	12.036		
1,300.0	1,265.2	1,311.6	1,290.7	5.7	4.4	164.97	-141.2	110.3	76.7	70.2	6.49	11.823		
1,400.0	1,355.8	1,414.1	1,386.2	6.5	5.2	165.56	-168.4	135.7	83.2	76.1	7.18	11.599		
1,500.0	1,444.9	1,516.9	1,480.6	7.5	6.0	166.01	-198.1	163.5	89.7	81.8	7.91	11.343		
1,600.0	1,532.4	1,617.9	1,572.2	8.5	6.8	166.41	-229.3	192.6	96.7	88.0	8.66	11.162		
1,616.3	1,546.5	1,634.2	1,586.9	8.7	7.0	166.51	-234.4	197.4	98.1	89.3	8.78	11.169		
1,700.0	1,618.7	1,717.5	1,662.3	9.5	7.7	167.02	-260.3	221.6	105.6	96.1	9.45	11.169		
1,800.0	1,705.1	1,817.1	1,752.4	10.6	8.6	167.55	-291.3	250.5	114.6	104.3	10.26	11.166		
1,900.0	1,791.4	1,916.7	1,842.6	11.7	9.5	168.00	-322.3	279.4	123.5	112.5	11.07	11.161		
2,000.0	1,877.7	2,016.3	1,932.7	12.8	10.4	168.39	-353.2	308.4	132.5	120.6	11.88	11.155		
2,100.0	1,964.0	2,115.9	2,022.8	13.9	11.2	168.73	-384.2	337.3	141.5	128.8	12.69	11.148		
2,200.0	2,050.3	2,215.5	2,112.9	14.9	12.1	169.03	-415.2	366.2	150.5	137.0	13.51	11.140		
2,300.0	2,136.6	2,315.1	2,203.1	16.0	13.0	169.29	-446.2	395.2	159.5	145.1	14.32	11.132		
2,400.0	2,222.9	2,414.7	2,293.2	17.1	13.9	169.53	-477.2	424.1	168.4	153.3	15.14	11.125		
2,500.0	2,309.3	2,514.3	2,383.3	18.2	14.8	169.74	-508.2	453.0	177.4	161.5	15.96	11.117		
2,600.0	2,395.6	2,613.9	2,473.4	19.3	15.7	169.94	-539.1	482.0	186.4	169.6	16.78	11.110		
2,700.0	2,481.9	2,713.5	2,563.5	20.4	16.6	170.11	-570.1	510.9	195.4	177.8	17.60	11.103		
2,800.0	2,568.2	2,813.1	2,653.7	21.5	17.5	170.27	-601.1	539.8	204.4	186.0	18.42	11.096		
2,900.0	2,654.5	2,912.7	2,743.8	22.6	18.4	170.42	-632.1	568.7	213.4	194.2	19.24	11.090		
3,000.0	2,740.8	3,012.2	2,833.9	23.7	19.3	170.55	-663.1	597.7	222.4	202.4	20.07	11.084		
3,100.0	2,827.2	3,111.8	2,924.0	24.8	20.2	170.68	-694.0	626.6	231.4	210.5	20.89	11.078		
3,200.0	2,913.5	3,211.4	3,014.1	25.9	21.1	170.79	-725.0	655.5	240.4	218.7	21.71	11.072		
3,300.0	2,999.8	3,311.0	3,104.3	26.9	22.0	170.90	-756.0	684.5	249.4	226.9	22.54	11.067		
3,400.0	3,086.1	3,410.6	3,194.4	28.0	22.9	171.00	-787.0	713.4	258.4	235.1	23.36	11.061		
3,500.0	3,172.4	3,510.2	3,284.5	29.1	23.8	171.09	-818.0	742.3	267.4	243.3	24.19	11.056		
3,600.0	3,258.7	3,609.8	3,374.6	30.2	24.7	171.17	-849.0	771.3	276.5	251.4	25.01	11.052		
3,700.0	3,345.1	3,709.4	3,464.7	31.3	25.6	171.25	-879.9	800.2	285.5	259.6	25.84	11.047		
3,800.0	3,431.4	3,809.0	3,554.9	32.4	26.5	171.33	-910.9	829.1	294.5	267.8	26.67	11.043		
3,900.0	3,517.7	3,908.6	3,645.0	33.5	27.4	171.40	-941.9	858.1	303.5	276.0	27.49	11.039		
4,000.0	3,604.0	4,008.2	3,735.1	34.6	28.3	171.47	-972.9	887.0	312.5	284.2	28.32	11.035		
4,100.0	3,690.3	4,107.8	3,825.2	35.7	29.2	171.53	-1,003.9	915.9	321.5	292.3	29.14	11.031		
4,200.0	3,776.6	4,207.4	3,915.4	36.8	30.1	171.59	-1,034.8	944.9	330.5	300.5	29.97	11.027		
4,300.0	3,863.0	4,307.0	4,005.5	37.9	31.1	171.65	-1,065.8	973.8	339.5	308.7	30.80	11.023		
4,400.0	3,949.3	4,406.5	4,095.6	39.0	32.0	171.70	-1,096.8	1,002.7	348.5	316.9	31.63	11.020		
4,500.0	4,035.6	4,506.1	4,185.7	40.1	32.9	171.75	-1,127.8	1,031.7	357.5	325.1	32.45	11.017		
4,600.0	4,121.9	4,605.7	4,275.8	41.2	33.8	171.80	-1,158.8	1,060.6	366.5	333.3	33.28	11.014		
4,700.0	4,208.2	4,705.3	4,366.0	42.3	34.7	171.85	-1,189.8	1,089.5	375.5	341.4	34.11	11.011		
4,800.0	4,294.5	4,804.9	4,456.1	43.4	35.6	171.89	-1,220.7	1,118.4	384.6	349.6	34.94	11.008		

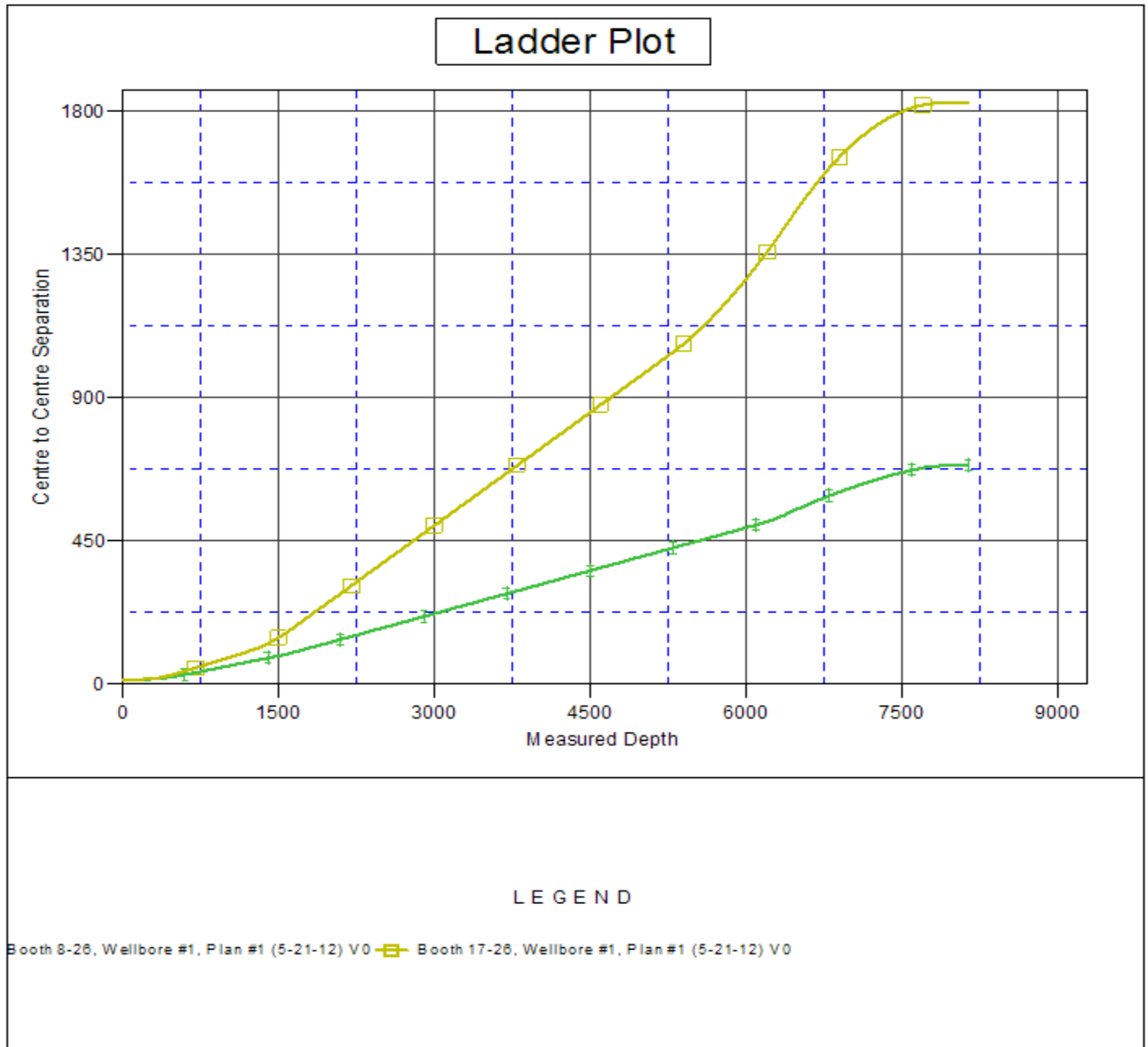
CC - Min centre to center distance or convergent point, SF - min separation factor, ES - min ellipse separation

Company:	BAYSWATER EXPLORATION & PRODUCTION	Local Co-ordinate Reference:	Well Booth 40-26
Project:	SEC.26-T7N-R65W	TVD Reference:	WELL @ 4909.0ft (Original Well Elev)
Reference Site:	Booth 9 Pad Sec.26-T7N-R65W	MD Reference:	WELL @ 4909.0ft (Original Well Elev)
Site Error:	0.0ft	North Reference:	True
Reference Well:	Booth 40-26	Survey Calculation Method:	Minimum Curvature
Well Error:	0.0ft	Output errors are at	2.00 sigma
Reference Wellbore	Wellbore #1	Database:	Landmark
Reference Design:	Plan #1 (5-21-12)	Offset TVD Reference:	Offset Datum

Offset Design Booth 9 Pad Sec.26-T7N-R65W - Booth 8-26 - Wellbore #1 - Plan #1 (5-21-12)												Offset Site Error:	0.0 ft
Survey Program: 0-MWD												Offset Well Error:	0.0 ft
Reference		Offset		Semi Major Axis			Distance						Warning
Measured Depth	Vertical Depth	Measured Depth	Vertical Depth	Reference	Offset	Highside Toolface	Offset Wellbore Centre +N/-S	Offset Wellbore Centre +E/-W	Between Centres	Between Ellipses	Minimum Separation	Separation Factor	
(ft)	(ft)	(ft)	(ft)	(ft)	(ft)	(°)	(ft)	(ft)	(ft)	(ft)	(ft)		
4,900.0	4,380.9	4,904.5	4,546.2	44.5	36.5	171.93	-1,251.7	1,147.4	393.6	357.8	35.76	11.005	
5,000.0	4,467.2	5,004.1	4,636.3	45.6	37.4	171.97	-1,282.7	1,176.3	402.6	366.0	36.59	11.002	
5,100.0	4,553.5	5,103.7	4,726.4	46.7	38.3	172.01	-1,313.7	1,205.2	411.6	374.2	37.42	10.999	
5,200.0	4,639.8	5,203.3	4,816.6	47.8	39.2	172.05	-1,344.7	1,234.2	420.6	382.4	38.25	10.997	
5,300.0	4,726.1	5,302.9	4,906.7	48.9	40.1	172.09	-1,375.6	1,263.1	429.6	390.5	39.08	10.994	
5,400.0	4,812.4	5,402.5	4,996.8	50.0	41.0	172.12	-1,406.6	1,292.0	438.6	398.7	39.90	10.992	
5,500.0	4,898.8	5,502.1	5,086.9	51.1	41.9	172.15	-1,437.6	1,321.0	447.6	406.9	40.73	10.990	
5,600.0	4,985.1	5,601.7	5,177.1	52.2	42.8	172.18	-1,468.6	1,349.9	456.6	415.1	41.56	10.988	
5,700.0	5,071.4	5,701.3	5,267.2	53.2	43.7	172.21	-1,499.6	1,378.8	465.7	423.3	42.39	10.985	
5,800.0	5,157.7	5,800.8	5,357.3	54.3	44.6	172.24	-1,530.6	1,407.8	474.7	431.5	43.22	10.983	
5,900.0	5,244.0	5,900.4	5,447.4	55.4	45.5	172.27	-1,561.5	1,436.7	483.7	439.6	44.05	10.981	
6,000.0	5,330.3	6,000.0	5,537.5	56.5	46.4	172.30	-1,592.5	1,465.6	492.7	447.8	44.87	10.979	
6,100.0	5,416.7	6,099.6	5,627.7	57.6	47.3	172.32	-1,623.5	1,494.6	501.7	456.0	45.70	10.977 SF	
6,200.0	5,503.0	6,193.1	5,712.3	58.7	48.1	172.35	-1,652.4	1,521.6	511.0	464.5	46.50	10.989	
6,300.0	5,589.3	6,277.4	5,789.5	59.8	48.7	172.41	-1,677.1	1,544.6	522.6	475.4	47.20	11.073	
6,374.4	5,653.5	6,339.6	5,847.2	60.6	49.1	172.48	-1,694.3	1,560.7	533.2	485.5	47.69	11.179	
6,400.0	5,675.7	6,361.0	5,867.1	60.9	49.2	172.51	-1,700.0	1,566.0	537.0	489.2	47.88	11.217	
6,500.0	5,763.3	6,444.3	5,945.2	61.7	49.7	172.65	-1,721.1	1,585.7	551.8	503.3	48.53	11.371	
6,600.0	5,852.5	6,527.2	6,023.8	62.5	50.1	172.78	-1,740.5	1,603.8	566.0	516.9	49.11	11.527	
6,700.0	5,943.3	6,609.9	6,102.9	63.2	50.5	172.90	-1,758.2	1,620.3	579.7	530.1	49.60	11.686	
6,800.0	6,035.5	6,700.0	6,189.8	63.9	50.9	173.02	-1,775.5	1,636.5	592.7	542.7	50.04	11.846	
6,900.0	6,128.9	6,774.6	6,262.3	64.5	51.2	173.12	-1,788.3	1,648.5	605.1	554.7	50.36	12.016	
7,000.0	6,223.6	6,856.6	6,342.4	65.0	51.5	173.22	-1,800.8	1,660.1	616.8	566.2	50.61	12.188	
7,100.0	6,319.3	6,938.4	6,422.9	65.5	51.7	173.31	-1,811.6	1,670.2	628.0	577.2	50.78	12.366	
7,200.0	6,416.0	7,019.9	6,503.5	65.9	52.0	173.40	-1,820.7	1,678.7	638.5	587.6	50.87	12.551	
7,300.0	6,513.5	7,100.0	6,582.9	66.3	52.1	173.48	-1,828.0	1,685.5	648.3	597.5	50.88	12.743	
7,400.0	6,611.7	7,182.6	6,665.1	66.6	52.3	173.56	-1,833.8	1,690.9	657.5	606.7	50.80	12.944	
7,500.0	6,710.5	7,263.6	6,746.0	66.9	52.4	173.64	-1,837.8	1,694.7	666.1	615.4	50.64	13.154	
7,600.0	6,809.8	7,344.6	6,826.8	67.1	52.5	173.71	-1,840.2	1,696.9	674.0	623.6	50.39	13.374	
7,700.0	6,909.4	7,427.2	6,909.4	67.2	52.5	173.78	-1,840.8	1,697.5	681.2	631.1	50.07	13.603	
7,800.0	7,009.3	7,527.0	7,009.3	67.3	52.6	173.83	-1,840.8	1,697.5	686.0	636.3	49.71	13.800	
7,890.7	7,100.0	7,617.7	7,100.0	67.4	52.6	-50.52	-1,840.8	1,697.5	687.5	638.1	49.35	13.931	
7,900.0	7,109.3	7,627.0	7,109.3	67.4	52.6	-50.52	-1,840.8	1,697.5	687.5	638.1	49.37	13.925	
8,000.0	7,209.3	7,727.0	7,209.3	67.4	52.7	-50.52	-1,840.8	1,697.5	687.5	637.9	49.59	13.864	
8,100.0	7,309.3	7,827.0	7,309.3	67.5	52.8	-50.52	-1,840.8	1,697.5	687.5	637.7	49.81	13.803	
8,121.9	7,331.2	7,848.9	7,331.2	67.5	52.8	-50.52	-1,840.8	1,697.5	687.5	637.6	49.85	13.790	
8,135.7	7,345.0	7,857.7	7,340.0	67.5	52.8	-50.52	-1,840.8	1,697.5	687.5	637.6	49.88	13.783	

Company:	BAYSWATER EXPLORATION & PRODUCTION	Local Co-ordinate Reference:	Well Booth 40-26
Project:	SEC.26-T7N-R65W	TVD Reference:	WELL @ 4909.0ft (Original Well Elev)
Reference Site:	Booth 9 Pad Sec.26-T7N-R65W	MD Reference:	WELL @ 4909.0ft (Original Well Elev)
Site Error:	0.0ft	North Reference:	True
Reference Well:	Booth 40-26	Survey Calculation Method:	Minimum Curvature
Well Error:	0.0ft	Output errors are at	2.00 sigma
Reference Wellbore	Wellbore #1	Database:	Landmark
Reference Design:	Plan #1 (5-21-12)	Offset TVD Reference:	Offset Datum

Reference Depths are relative to WELL @ 4909.0ft (Original Well Elev) Coordinates are relative to: Booth 40-26
Offset Depths are relative to Offset Datum Coordinate System is US State Plane 1983, Colorado Northern Zone
Central Meridian is -105.500000 ° Grid Convergence at Surface is: 0.56°



Company:	BAYSWATER EXPLORATION & PRODUCTION	Local Co-ordinate Reference:	Well Booth 40-26
Project:	SEC.26-T7N-R65W	TVD Reference:	WELL @ 4909.0ft (Original Well Elev)
Reference Site:	Booth 9 Pad Sec.26-T7N-R65W	MD Reference:	WELL @ 4909.0ft (Original Well Elev)
Site Error:	0.0ft	North Reference:	True
Reference Well:	Booth 40-26	Survey Calculation Method:	Minimum Curvature
Well Error:	0.0ft	Output errors are at	2.00 sigma
Reference Wellbore	Wellbore #1	Database:	Landmark
Reference Design:	Plan #1 (5-21-12)	Offset TVD Reference:	Offset Datum

Reference Depths are relative to WELL @ 4909.0ft (Original Well Elev) Coordinates are relative to: Booth 40-26
Offset Depths are relative to Offset Datum Coordinate System is US State Plane 1983, Colorado Northern Zone
Central Meridian is -105.500000 ° Grid Convergence at Surface is: 0.56°

