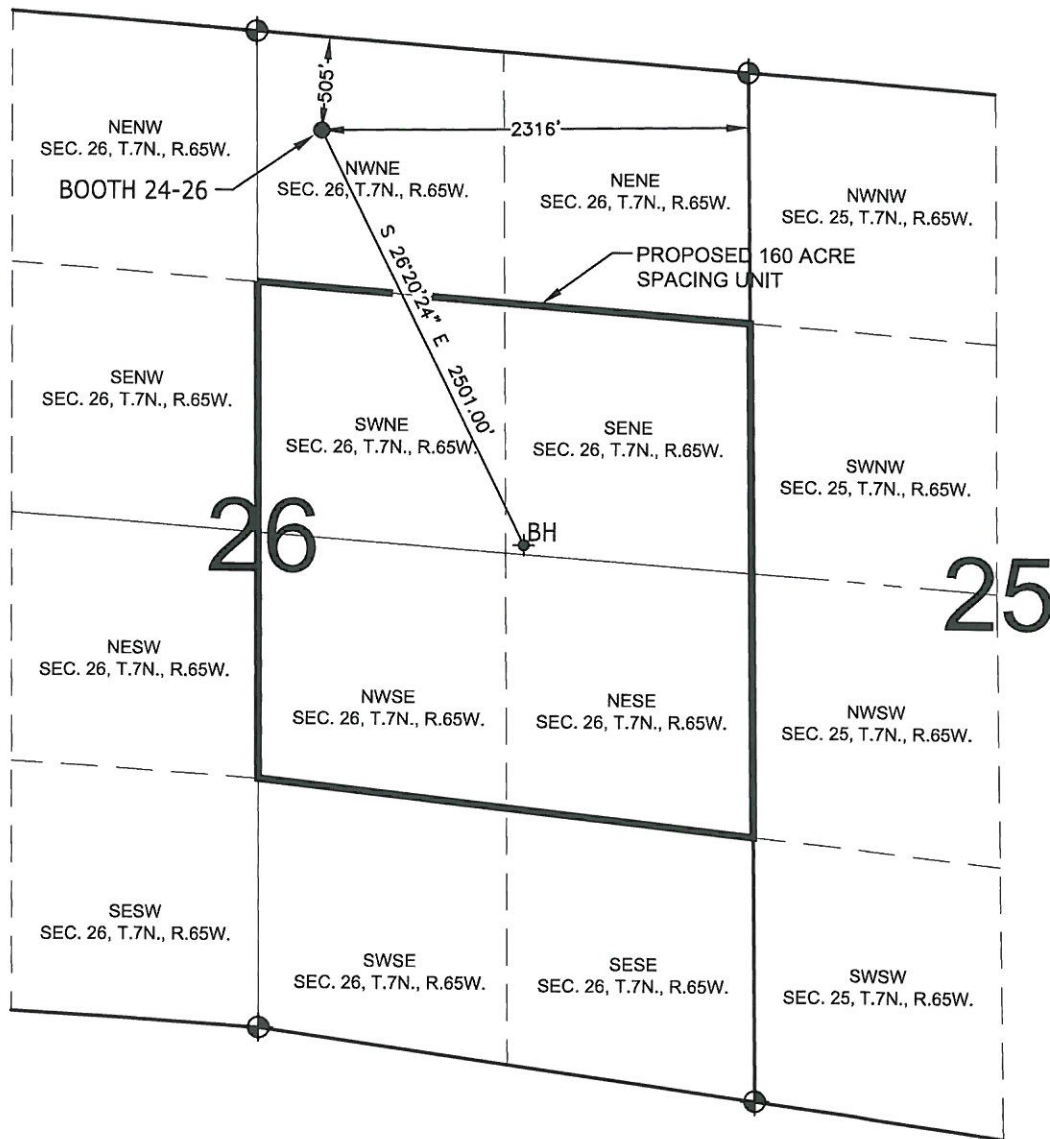


PROPOSED 318 Ae SPACING UNIT

SECTION 26, TOWNSHIP 7 NORTH, RANGE 65 WEST, 6TH P.M.



WELL BOOTH 24-26 TO BE LOCATED 505' FNL AND 2316' FEL, T7N, R65W, SEC. 26

SURFACE LOCATION

LATITUDE= 40.551524°

LONGITUDE= 104.628898°

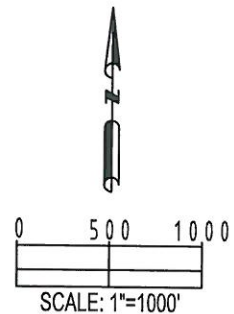
BOTTOM HOLE LOCATION

LATITUDE= 40.545342°

LONGITUDE= 104.624984°

LEGEND

- = EXISTING MONUMENT
 = BOTTOM HOLE
 BH = BOTTOM HOLE
 = PROPOSED WELL
 = EXISTING WELL



PREPARED BY:



FIELD DATE:

03-20-12

DRAWING DATE:

08-01-12

BY:

CLM

CHECKED:

RDW

SURFACE LOCATION:

NW 1/4 NE 1/4,

SEC. 26, T7N, R65W

WELD COUNTY, COLORADO