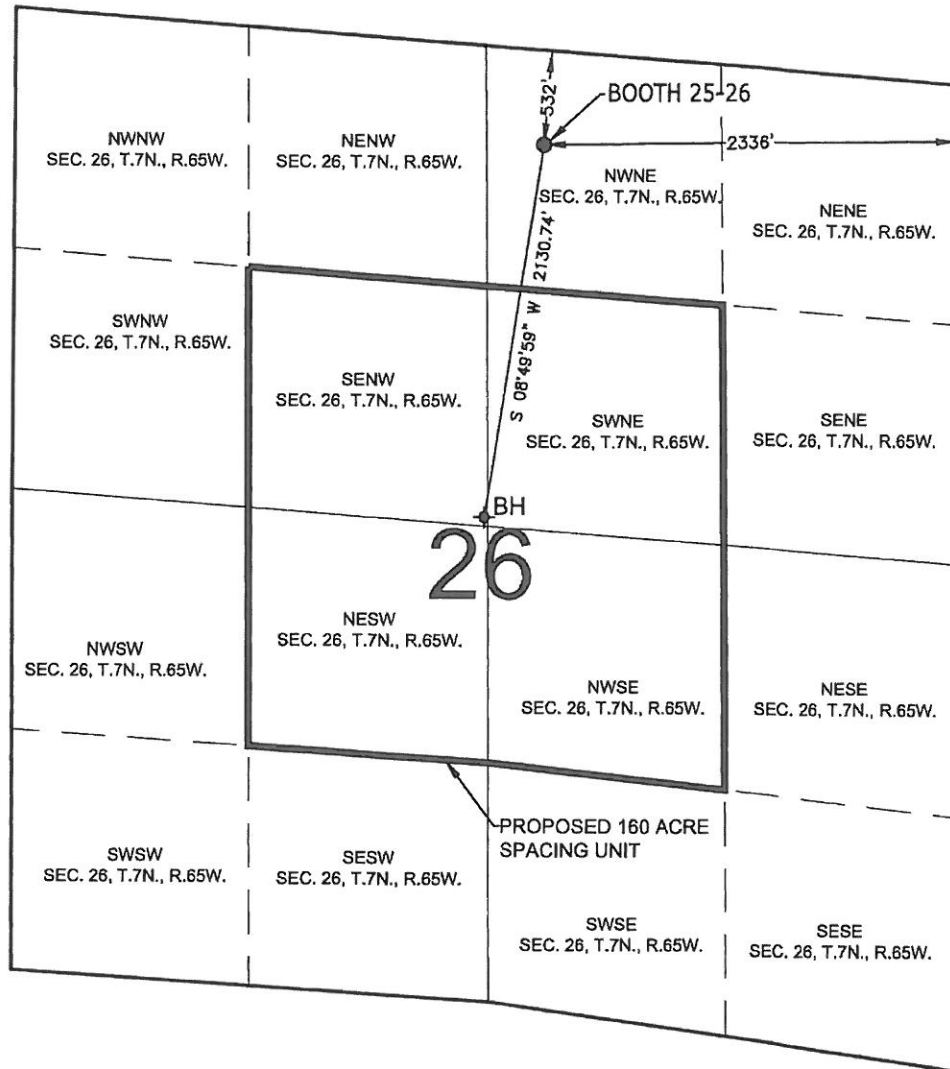


PROPOSED 318 Ae SPACING UNIT

SECTION 26, TOWNSHIP 7 NORTH, RANGE 65 WEST, 6TH P.M.



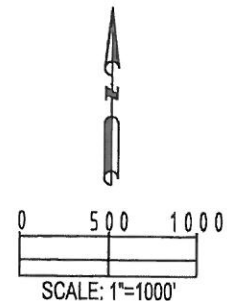
WELL BOOTH 25-26 TO BE LOCATED 532' FNL AND 2336' FEL, T7N, R65W, SEC. 26


SURFACE LOCATION
 LATITUDE= 40.551456°
 LONGITUDE= 104.628972°

BOTTOM HOLE LOCATION
 LATITUDE= 40.545686°
 LONGITUDE= 104.630223°

LEGEND

⊕ = EXISTING MONUMENT ⊕ = BOTTOM HOLE BH = BOTTOM HOLE
 ● = PROPOSED WELL ♦ = EXISTING WELL



<div>PREPARED BY</div> <div>PFS Petroleum Field Services, LLC 1801 W. 13th Ave. Denver, CO 80204</div>	FIELD DATE: 03-20-12		SURFACE LOCATION: NW 1/4 NE 1/4, SEC. 26, T7N, R65W WELD COUNTY, COLORADO
	DRAWING DATE: 07-26-12		
	BY: CLM	CHECKED: RDW	