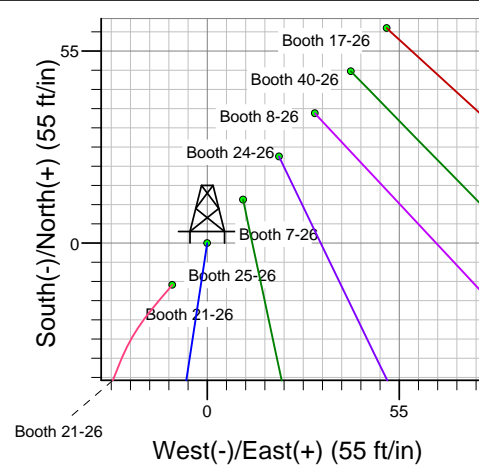
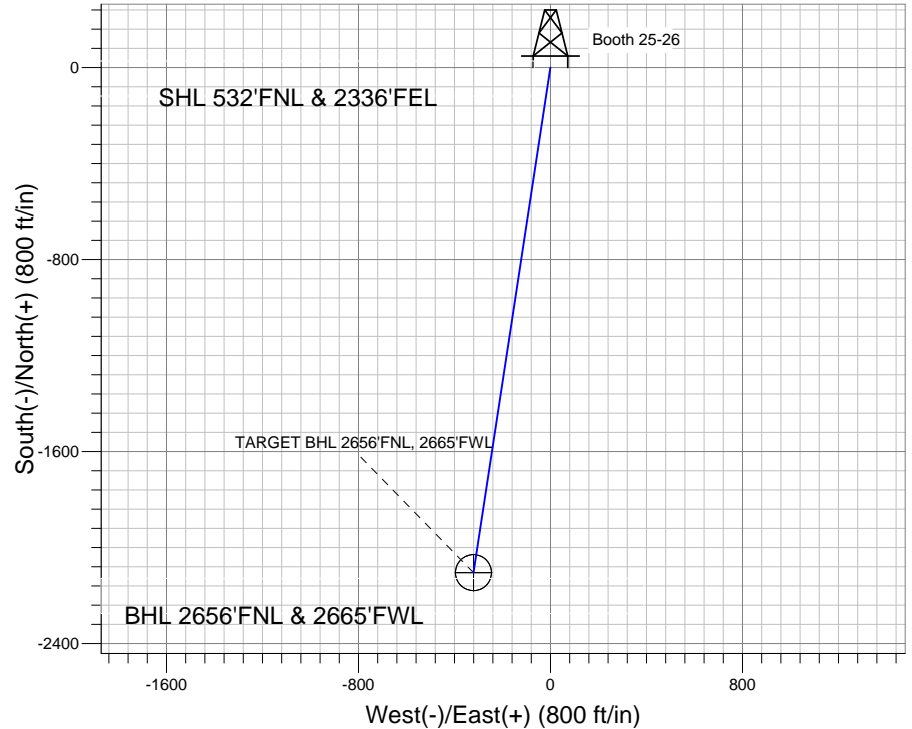
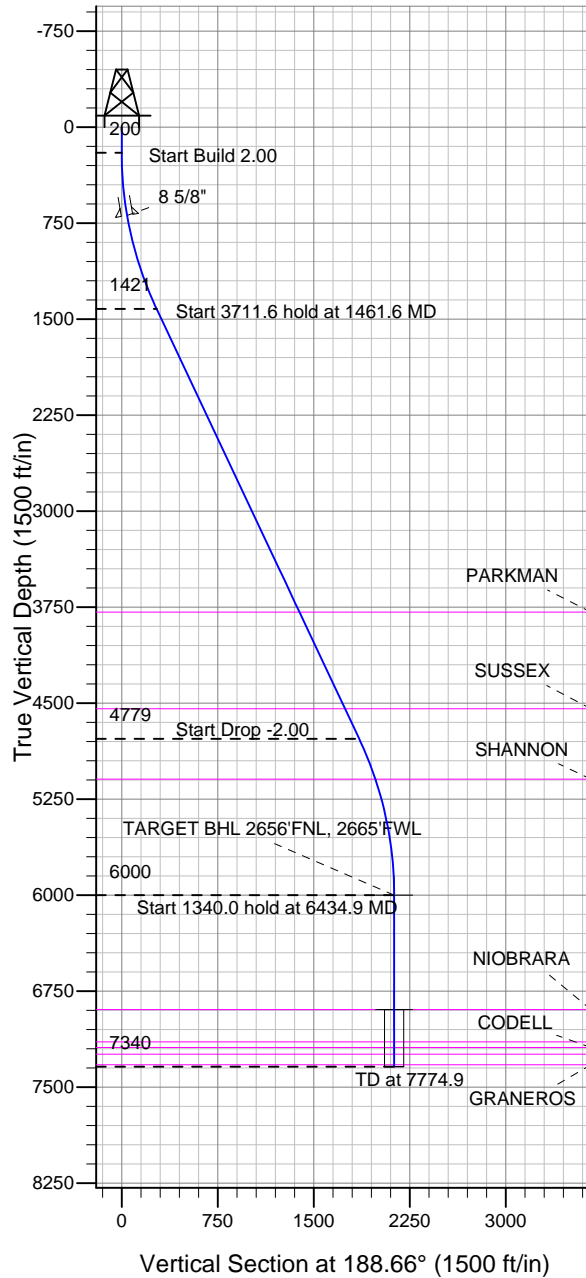


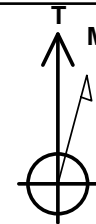
Well Name: Booth 25-26

Surface Location: Booth 9 Pad Sec.26-T7N-R65W
 North American Datum 1983 US State Plane 1983 Colorado Northern Zone
 Ground Elevation: 4894.0
 +N/-S +E/-W Northing Easting Latitude Longitude Slot
 0.0 0.0 1444925.09 3242044.45 40.551456 -104.628972
 Original Well Elev WELL @ 4910.0ft (Original Well Elev)

BAYSWATER EXPLORATION & PRODUCTION



Booth 9 Pad Sec.26-T7N-R65W
 Booth 25-26
 Plan #1 (5-21-12)
 14:58, May 30 2012



Azimuths to True North
 Magnetic North: 8.68°

Magnetic Field
 Strength: 53123.5snT
 Dip Angle: 67.16°
 Date: 5/30/2012
 Model: IGRF2010

WELLBORE TARGET DETAILS (LAT/LONG)

Name	TVD	+N/-S	+E/-W	Latitude	Longitude	Shape
TARGET BHL 2656'FNL, 2665'FWL	6000.0	-2104.7	-320.7	40.545679	-104.630126	Point
TARGET CIRCLE 2656'FNL & 2665'FWL	6894.0	-2104.7	-320.7	40.545679	-104.630126	Circle (Radius: 75.0)

SECTION DETAILS

Sec	MD	Inc	Azi	TVD	+N/-S	+E/-W	DLeg	TFace	VSec	Target
1	0.0	0.00	0.00	0.0	0.0	0.0	0.00	0.00	0.0	
2	200.0	0.00	0.00	200.0	0.0	0.0	0.00	0.00	0.0	
3	1461.6	25.23	188.66	1421.3	-270.2	-41.2	2.00	188.66	273.4	
4	5173.3	25.23	188.66	4778.7	-1834.4	-279.5	0.00	0.00	1855.6	
5	6434.9	0.00	0.00	6000.0	-2104.7	-320.7	2.00	180.00	2129.0	TARGET BHL 2656'FNL, 2665'FWL
6	7774.9	0.00	0.00	7340.0	-2104.7	-320.7	0.00	0.00	2129.0	



Directional

BAYSWATER EXPLORATION & PRODUCTION

SEC.26-T7N-R65W

Booth 9 Pad Sec.26-T7N-R65W

Booth 25-26

Wellbore #1

Plan: Plan #1 (5-21-12)

Standard Planning Report

30 May, 2012

Plan Sections										
Measured Depth (ft)	Inclination (°)	Azimuth (°)	Vertical Depth (ft)	+N/-S (ft)	+E/-W (ft)	Dogleg Rate (°/100ft)	Build Rate (°/100ft)	Turn Rate (°/100ft)	TFO (°)	Target
0.0	0.00	0.00	0.0	0.0	0.0	0.00	0.00	0.00	0.00	
200.0	0.00	0.00	200.0	0.0	0.0	0.00	0.00	0.00	0.00	
1,461.6	25.23	188.66	1,421.3	-270.2	-41.2	2.00	2.00	0.00	188.66	
5,173.3	25.23	188.66	4,778.7	-1,834.4	-279.5	0.00	0.00	0.00	0.00	
6,434.9	0.00	0.00	6,000.0	-2,104.7	-320.7	2.00	-2.00	0.00	180.00	TARGET BHL 2656
7,774.9	0.00	0.00	7,340.0	-2,104.7	-320.7	0.00	0.00	0.00	0.00	

Database:	Landmark	Local Co-ordinate Reference:	Well Booth 25-26
Company:	BAYSWATER EXPLORATION & PRODUCTION	TVD Reference:	WELL @ 4910.0ft (Original Well Elev)
Project:	SEC.26-T7N-R65W	MD Reference:	WELL @ 4910.0ft (Original Well Elev)
Site:	Booth 9 Pad Sec.26-T7N-R65W	North Reference:	True
Well:	Booth 25-26	Survey Calculation Method:	Minimum Curvature
Wellbore:	Wellbore #1		
Design:	Plan #1 (5-21-12)		

Planned Survey									
Measured Depth (ft)	Inclination (°)	Azimuth (°)	Vertical Depth (ft)	+N/-S (ft)	+E/-W (ft)	Vertical Section (ft)	Dogleg Rate (°/100ft)	Build Rate (°/100ft)	Turn Rate (°/100ft)
0.0	0.00	0.00	0.0	0.0	0.0	0.0	0.00	0.00	0.00
40.0	0.00	0.00	40.0	0.0	0.0	0.0	0.00	0.00	0.00
80.0	0.00	0.00	80.0	0.0	0.0	0.0	0.00	0.00	0.00
120.0	0.00	0.00	120.0	0.0	0.0	0.0	0.00	0.00	0.00
160.0	0.00	0.00	160.0	0.0	0.0	0.0	0.00	0.00	0.00
200.0	0.00	0.00	200.0	0.0	0.0	0.0	0.00	0.00	0.00
240.0	0.80	188.66	240.0	-0.3	0.0	0.3	2.00	2.00	0.00
280.0	1.60	188.66	280.0	-1.1	-0.2	1.1	2.00	2.00	0.00
320.0	2.40	188.66	320.0	-2.5	-0.4	2.5	2.00	2.00	0.00
360.0	3.20	188.66	359.9	-4.4	-0.7	4.5	2.00	2.00	0.00
400.0	4.00	188.66	399.8	-6.9	-1.1	7.0	2.00	2.00	0.00
440.0	4.80	188.66	439.7	-9.9	-1.5	10.0	2.00	2.00	0.00
480.0	5.60	188.66	479.6	-13.5	-2.1	13.7	2.00	2.00	0.00
520.0	6.40	188.66	519.3	-17.6	-2.7	17.9	2.00	2.00	0.00
560.0	7.20	188.66	559.1	-22.3	-3.4	22.6	2.00	2.00	0.00
600.0	8.00	188.66	598.7	-27.6	-4.2	27.9	2.00	2.00	0.00
640.0	8.80	188.66	638.3	-33.3	-5.1	33.7	2.00	2.00	0.00
680.0	9.60	188.66	677.8	-39.7	-6.0	40.1	2.00	2.00	0.00
692.4	9.85	188.66	690.0	-41.7	-6.4	42.2	2.00	2.00	0.00
8 5/8"									
720.0	10.40	188.66	717.1	-46.5	-7.1	47.1	2.00	2.00	0.00
760.0	11.20	188.66	756.4	-53.9	-8.2	54.6	2.00	2.00	0.00
800.0	12.00	188.66	795.6	-61.9	-9.4	62.6	2.00	2.00	0.00
840.0	12.80	188.66	834.7	-70.4	-10.7	71.2	2.00	2.00	0.00
880.0	13.60	188.66	873.6	-79.4	-12.1	80.3	2.00	2.00	0.00
920.0	14.40	188.66	912.4	-89.0	-13.6	90.0	2.00	2.00	0.00
960.0	15.20	188.66	951.1	-99.1	-15.1	100.2	2.00	2.00	0.00
1,000.0	16.00	188.66	989.6	-109.7	-16.7	111.0	2.00	2.00	0.00
1,040.0	16.80	188.66	1,028.0	-120.9	-18.4	122.3	2.00	2.00	0.00
1,080.0	17.60	188.66	1,066.2	-132.6	-20.2	134.1	2.00	2.00	0.00
1,120.0	18.40	188.66	1,104.3	-144.8	-22.1	146.5	2.00	2.00	0.00
1,160.0	19.20	188.66	1,142.1	-157.5	-24.0	159.3	2.00	2.00	0.00
1,200.0	20.00	188.66	1,179.8	-170.8	-26.0	172.8	2.00	2.00	0.00
1,240.0	20.80	188.66	1,217.3	-184.6	-28.1	186.7	2.00	2.00	0.00
1,280.0	21.60	188.66	1,254.6	-198.9	-30.3	201.2	2.00	2.00	0.00
1,320.0	22.40	188.66	1,291.7	-213.7	-32.6	216.2	2.00	2.00	0.00
1,360.0	23.20	188.66	1,328.6	-229.0	-34.9	231.7	2.00	2.00	0.00
1,400.0	24.00	188.66	1,365.2	-244.8	-37.3	247.7	2.00	2.00	0.00
1,440.0	24.80	188.66	1,401.6	-261.2	-39.8	264.2	2.00	2.00	0.00
1,461.6	25.23	188.66	1,421.3	-270.2	-41.2	273.4	2.00	2.00	0.00
1,480.0	25.23	188.66	1,437.9	-278.0	-42.4	281.2	0.00	0.00	0.00
1,520.0	25.23	188.66	1,474.0	-294.8	-44.9	298.2	0.00	0.00	0.00
1,560.0	25.23	188.66	1,510.2	-311.7	-47.5	315.3	0.00	0.00	0.00
1,600.0	25.23	188.66	1,546.4	-328.5	-50.1	332.3	0.00	0.00	0.00
1,640.0	25.23	188.66	1,582.6	-345.4	-52.6	349.4	0.00	0.00	0.00
1,680.0	25.23	188.66	1,618.8	-362.3	-55.2	366.4	0.00	0.00	0.00
1,720.0	25.23	188.66	1,655.0	-379.1	-57.8	383.5	0.00	0.00	0.00
1,760.0	25.23	188.66	1,691.1	-396.0	-60.3	400.5	0.00	0.00	0.00
1,800.0	25.23	188.66	1,727.3	-412.8	-62.9	417.6	0.00	0.00	0.00
1,840.0	25.23	188.66	1,763.5	-429.7	-65.5	434.6	0.00	0.00	0.00
1,880.0	25.23	188.66	1,799.7	-446.5	-68.0	451.7	0.00	0.00	0.00
1,920.0	25.23	188.66	1,835.9	-463.4	-70.6	468.7	0.00	0.00	0.00
1,960.0	25.23	188.66	1,872.1	-480.3	-73.2	485.8	0.00	0.00	0.00

Database:	Landmark	Local Co-ordinate Reference:	Well Booth 25-26
Company:	BAYSWATER EXPLORATION & PRODUCTION	TVD Reference:	WELL @ 4910.0ft (Original Well Elev)
Project:	SEC.26-T7N-R65W	MD Reference:	WELL @ 4910.0ft (Original Well Elev)
Site:	Booth 9 Pad Sec.26-T7N-R65W	North Reference:	True
Well:	Booth 25-26	Survey Calculation Method:	Minimum Curvature
Wellbore:	Wellbore #1		
Design:	Plan #1 (5-21-12)		

Planned Survey									
Measured Depth (ft)	Inclination (°)	Azimuth (°)	Vertical Depth (ft)	+N/-S (ft)	+E/-W (ft)	Vertical Section (ft)	Dogleg Rate (°/100ft)	Build Rate (°/100ft)	Turn Rate (°/100ft)
2,000.0	25.23	188.66	1,908.2	-497.1	-75.8	502.9	0.00	0.00	0.00
2,040.0	25.23	188.66	1,944.4	-514.0	-78.3	519.9	0.00	0.00	0.00
2,080.0	25.23	188.66	1,980.6	-530.8	-80.9	537.0	0.00	0.00	0.00
2,120.0	25.23	188.66	2,016.8	-547.7	-83.5	554.0	0.00	0.00	0.00
2,160.0	25.23	188.66	2,053.0	-564.5	-86.0	571.1	0.00	0.00	0.00
2,200.0	25.23	188.66	2,089.2	-581.4	-88.6	588.1	0.00	0.00	0.00
2,240.0	25.23	188.66	2,125.3	-598.3	-91.2	605.2	0.00	0.00	0.00
2,280.0	25.23	188.66	2,161.5	-615.1	-93.7	622.2	0.00	0.00	0.00
2,320.0	25.23	188.66	2,197.7	-632.0	-96.3	639.3	0.00	0.00	0.00
2,360.0	25.23	188.66	2,233.9	-648.8	-98.9	656.3	0.00	0.00	0.00
2,400.0	25.23	188.66	2,270.1	-665.7	-101.4	673.4	0.00	0.00	0.00
2,440.0	25.23	188.66	2,306.3	-682.5	-104.0	690.4	0.00	0.00	0.00
2,480.0	25.23	188.66	2,342.4	-699.4	-106.6	707.5	0.00	0.00	0.00
2,520.0	25.23	188.66	2,378.6	-716.3	-109.1	724.5	0.00	0.00	0.00
2,560.0	25.23	188.66	2,414.8	-733.1	-111.7	741.6	0.00	0.00	0.00
2,600.0	25.23	188.66	2,451.0	-750.0	-114.3	758.6	0.00	0.00	0.00
2,640.0	25.23	188.66	2,487.2	-766.8	-116.9	775.7	0.00	0.00	0.00
2,680.0	25.23	188.66	2,523.4	-783.7	-119.4	792.7	0.00	0.00	0.00
2,720.0	25.23	188.66	2,559.5	-800.5	-122.0	809.8	0.00	0.00	0.00
2,760.0	25.23	188.66	2,595.7	-817.4	-124.6	826.8	0.00	0.00	0.00
2,800.0	25.23	188.66	2,631.9	-834.3	-127.1	843.9	0.00	0.00	0.00
2,840.0	25.23	188.66	2,668.1	-851.1	-129.7	860.9	0.00	0.00	0.00
2,880.0	25.23	188.66	2,704.3	-868.0	-132.3	878.0	0.00	0.00	0.00
2,920.0	25.23	188.66	2,740.5	-884.8	-134.8	895.0	0.00	0.00	0.00
2,960.0	25.23	188.66	2,776.6	-901.7	-137.4	912.1	0.00	0.00	0.00
3,000.0	25.23	188.66	2,812.8	-918.5	-140.0	929.1	0.00	0.00	0.00
3,040.0	25.23	188.66	2,849.0	-935.4	-142.5	946.2	0.00	0.00	0.00
3,080.0	25.23	188.66	2,885.2	-952.3	-145.1	963.3	0.00	0.00	0.00
3,120.0	25.23	188.66	2,921.4	-969.1	-147.7	980.3	0.00	0.00	0.00
3,160.0	25.23	188.66	2,957.6	-986.0	-150.2	997.4	0.00	0.00	0.00
3,200.0	25.23	188.66	2,993.7	-1,002.8	-152.8	1,014.4	0.00	0.00	0.00
3,240.0	25.23	188.66	3,029.9	-1,019.7	-155.4	1,031.5	0.00	0.00	0.00
3,280.0	25.23	188.66	3,066.1	-1,036.5	-158.0	1,048.5	0.00	0.00	0.00
3,320.0	25.23	188.66	3,102.3	-1,053.4	-160.5	1,065.6	0.00	0.00	0.00
3,360.0	25.23	188.66	3,138.5	-1,070.3	-163.1	1,082.6	0.00	0.00	0.00
3,400.0	25.23	188.66	3,174.7	-1,087.1	-165.7	1,099.7	0.00	0.00	0.00
3,440.0	25.23	188.66	3,210.8	-1,104.0	-168.2	1,116.7	0.00	0.00	0.00
3,480.0	25.23	188.66	3,247.0	-1,120.8	-170.8	1,133.8	0.00	0.00	0.00
3,520.0	25.23	188.66	3,283.2	-1,137.7	-173.4	1,150.8	0.00	0.00	0.00
3,560.0	25.23	188.66	3,319.4	-1,154.5	-175.9	1,167.9	0.00	0.00	0.00
3,600.0	25.23	188.66	3,355.6	-1,171.4	-178.5	1,184.9	0.00	0.00	0.00
3,640.0	25.23	188.66	3,391.8	-1,188.3	-181.1	1,202.0	0.00	0.00	0.00
3,680.0	25.23	188.66	3,427.9	-1,205.1	-183.6	1,219.0	0.00	0.00	0.00
3,720.0	25.23	188.66	3,464.1	-1,222.0	-186.2	1,236.1	0.00	0.00	0.00
3,760.0	25.23	188.66	3,500.3	-1,238.8	-188.8	1,253.1	0.00	0.00	0.00
3,800.0	25.23	188.66	3,536.5	-1,255.7	-191.3	1,270.2	0.00	0.00	0.00
3,840.0	25.23	188.66	3,572.7	-1,272.6	-193.9	1,287.2	0.00	0.00	0.00
3,880.0	25.23	188.66	3,608.9	-1,289.4	-196.5	1,304.3	0.00	0.00	0.00
3,920.0	25.23	188.66	3,645.0	-1,306.3	-199.1	1,321.3	0.00	0.00	0.00
3,960.0	25.23	188.66	3,681.2	-1,323.1	-201.6	1,338.4	0.00	0.00	0.00
4,000.0	25.23	188.66	3,717.4	-1,340.0	-204.2	1,355.4	0.00	0.00	0.00
4,040.0	25.23	188.66	3,753.6	-1,356.8	-206.8	1,372.5	0.00	0.00	0.00
4,079.1	25.23	188.66	3,789.0	-1,373.3	-209.3	1,389.2	0.00	0.00	0.00

Database:	Landmark	Local Co-ordinate Reference:	Well Booth 25-26
Company:	BAYSWATER EXPLORATION & PRODUCTION	TVD Reference:	WELL @ 4910.0ft (Original Well Elev)
Project:	SEC.26-T7N-R65W	MD Reference:	WELL @ 4910.0ft (Original Well Elev)
Site:	Booth 9 Pad Sec.26-T7N-R65W	North Reference:	True
Well:	Booth 25-26	Survey Calculation Method:	Minimum Curvature
Wellbore:	Wellbore #1		
Design:	Plan #1 (5-21-12)		

Planned Survey

Measured Depth (ft)	Inclination (°)	Azimuth (°)	Vertical Depth (ft)	+N/-S (ft)	+E/-W (ft)	Vertical Section (ft)	Dogleg Rate (°/100ft)	Build Rate (°/100ft)	Turn Rate (°/100ft)
PARKMAN									
4,080.0	25.23	188.66	3,789.8	-1,373.7	-209.3	1,389.6	0.00	0.00	0.00
4,120.0	25.23	188.66	3,826.0	-1,390.6	-211.9	1,406.6	0.00	0.00	0.00
4,160.0	25.23	188.66	3,862.1	-1,407.4	-214.5	1,423.7	0.00	0.00	0.00
4,200.0	25.23	188.66	3,898.3	-1,424.3	-217.0	1,440.7	0.00	0.00	0.00
4,240.0	25.23	188.66	3,934.5	-1,441.1	-219.6	1,457.8	0.00	0.00	0.00
4,280.0	25.23	188.66	3,970.7	-1,458.0	-222.2	1,474.8	0.00	0.00	0.00
4,320.0	25.23	188.66	4,006.9	-1,474.8	-224.7	1,491.9	0.00	0.00	0.00
4,360.0	25.23	188.66	4,043.1	-1,491.7	-227.3	1,508.9	0.00	0.00	0.00
4,400.0	25.23	188.66	4,079.2	-1,508.6	-229.9	1,526.0	0.00	0.00	0.00
4,440.0	25.23	188.66	4,115.4	-1,525.4	-232.4	1,543.0	0.00	0.00	0.00
4,480.0	25.23	188.66	4,151.6	-1,542.3	-235.0	1,560.1	0.00	0.00	0.00
4,520.0	25.23	188.66	4,187.8	-1,559.1	-237.6	1,577.1	0.00	0.00	0.00
4,560.0	25.23	188.66	4,224.0	-1,576.0	-240.2	1,594.2	0.00	0.00	0.00
4,600.0	25.23	188.66	4,260.2	-1,592.8	-242.7	1,611.2	0.00	0.00	0.00
4,640.0	25.23	188.66	4,296.3	-1,609.7	-245.3	1,628.3	0.00	0.00	0.00
4,680.0	25.23	188.66	4,332.5	-1,626.6	-247.9	1,645.3	0.00	0.00	0.00
4,720.0	25.23	188.66	4,368.7	-1,643.4	-250.4	1,662.4	0.00	0.00	0.00
4,760.0	25.23	188.66	4,404.9	-1,660.3	-253.0	1,679.4	0.00	0.00	0.00
4,800.0	25.23	188.66	4,441.1	-1,677.1	-255.6	1,696.5	0.00	0.00	0.00
4,840.0	25.23	188.66	4,477.3	-1,694.0	-258.1	1,713.5	0.00	0.00	0.00
4,880.0	25.23	188.66	4,513.4	-1,710.8	-260.7	1,730.6	0.00	0.00	0.00
4,913.8	25.23	188.66	4,544.0	-1,725.1	-262.9	1,745.0	0.00	0.00	0.00
SUSSEX									
4,920.0	25.23	188.66	4,549.6	-1,727.7	-263.3	1,747.6	0.00	0.00	0.00
4,960.0	25.23	188.66	4,585.8	-1,744.6	-265.8	1,764.7	0.00	0.00	0.00
5,000.0	25.23	188.66	4,622.0	-1,761.4	-268.4	1,781.7	0.00	0.00	0.00
5,040.0	25.23	188.66	4,658.2	-1,778.3	-271.0	1,798.8	0.00	0.00	0.00
5,080.0	25.23	188.66	4,694.4	-1,795.1	-273.6	1,815.9	0.00	0.00	0.00
5,120.0	25.23	188.66	4,730.5	-1,812.0	-276.1	1,832.9	0.00	0.00	0.00
5,160.0	25.23	188.66	4,766.7	-1,828.8	-278.7	1,850.0	0.00	0.00	0.00
5,173.3	25.23	188.66	4,778.7	-1,834.4	-279.5	1,855.6	0.00	0.00	0.00
5,200.0	24.70	188.66	4,803.0	-1,845.6	-281.2	1,866.9	2.00	-2.00	0.00
5,240.0	23.90	188.66	4,839.4	-1,861.9	-283.7	1,883.4	2.00	-2.00	0.00
5,280.0	23.10	188.66	4,876.1	-1,877.6	-286.1	1,899.3	2.00	-2.00	0.00
5,320.0	22.30	188.66	4,913.0	-1,892.9	-288.4	1,914.7	2.00	-2.00	0.00
5,360.0	21.50	188.66	4,950.1	-1,907.6	-290.7	1,929.7	2.00	-2.00	0.00
5,400.0	20.70	188.66	4,987.4	-1,921.9	-292.9	1,944.1	2.00	-2.00	0.00
5,440.0	19.90	188.66	5,024.9	-1,935.6	-295.0	1,957.9	2.00	-2.00	0.00
5,480.0	19.10	188.66	5,062.7	-1,948.8	-297.0	1,971.3	2.00	-2.00	0.00
5,513.1	18.44	188.66	5,094.0	-1,959.3	-298.6	1,981.9	2.00	-2.00	0.00
SHANNON									
5,520.0	18.30	188.66	5,100.5	-1,961.5	-298.9	1,984.1	2.00	-2.00	0.00
5,560.0	17.50	188.66	5,138.6	-1,973.6	-300.7	1,996.4	2.00	-2.00	0.00
5,600.0	16.70	188.66	5,176.8	-1,985.2	-302.5	2,008.2	2.00	-2.00	0.00
5,640.0	15.90	188.66	5,215.2	-1,996.3	-304.2	2,019.4	2.00	-2.00	0.00
5,680.0	15.10	188.66	5,253.8	-2,006.9	-305.8	2,030.1	2.00	-2.00	0.00
5,720.0	14.30	188.66	5,292.5	-2,016.9	-307.4	2,040.2	2.00	-2.00	0.00
5,760.0	13.50	188.66	5,331.3	-2,026.4	-308.8	2,049.8	2.00	-2.00	0.00
5,800.0	12.70	188.66	5,370.3	-2,035.4	-310.2	2,058.9	2.00	-2.00	0.00
5,840.0	11.90	188.66	5,409.3	-2,043.8	-311.4	2,067.4	2.00	-2.00	0.00
5,880.0	11.10	188.66	5,448.5	-2,051.7	-312.6	2,075.4	2.00	-2.00	0.00
5,920.0	10.30	188.66	5,487.8	-2,059.0	-313.8	2,082.8	2.00	-2.00	0.00

Database:	Landmark	Local Co-ordinate Reference:	Well Booth 25-26
Company:	BAYSWATER EXPLORATION & PRODUCTION	TVD Reference:	WELL @ 4910.0ft (Original Well Elev)
Project:	SEC.26-T7N-R65W	MD Reference:	WELL @ 4910.0ft (Original Well Elev)
Site:	Booth 9 Pad Sec.26-T7N-R65W	North Reference:	True
Well:	Booth 25-26	Survey Calculation Method:	Minimum Curvature
Wellbore:	Wellbore #1		
Design:	Plan #1 (5-21-12)		

Planned Survey									
Measured Depth (ft)	Inclination (°)	Azimuth (°)	Vertical Depth (ft)	+N/-S (ft)	+E/-W (ft)	Vertical Section (ft)	Dogleg Rate (°/100ft)	Build Rate (°/100ft)	Turn Rate (°/100ft)
5,960.0	9.50	188.66	5,527.2	-2,065.8	-314.8	2,089.7	2.00	-2.00	0.00
6,000.0	8.70	188.66	5,566.7	-2,072.1	-315.8	2,096.0	2.00	-2.00	0.00
6,040.0	7.90	188.66	5,606.3	-2,077.8	-316.6	2,101.8	2.00	-2.00	0.00
6,080.0	7.10	188.66	5,646.0	-2,083.0	-317.4	2,107.0	2.00	-2.00	0.00
6,120.0	6.30	188.66	5,685.7	-2,087.6	-318.1	2,111.7	2.00	-2.00	0.00
6,160.0	5.50	188.66	5,725.5	-2,091.6	-318.7	2,115.8	2.00	-2.00	0.00
6,200.0	4.70	188.66	5,765.3	-2,095.2	-319.3	2,119.3	2.00	-2.00	0.00
6,240.0	3.90	188.66	5,805.2	-2,098.1	-319.7	2,122.3	2.00	-2.00	0.00
6,280.0	3.10	188.66	5,845.1	-2,100.5	-320.1	2,124.8	2.00	-2.00	0.00
6,320.0	2.30	188.66	5,885.1	-2,102.4	-320.4	2,126.7	2.00	-2.00	0.00
6,360.0	1.50	188.66	5,925.1	-2,103.7	-320.6	2,128.0	2.00	-2.00	0.00
6,400.0	0.70	188.66	5,965.1	-2,104.5	-320.7	2,128.8	2.00	-2.00	0.00
6,434.9	0.00	0.00	6,000.0	-2,104.7	-320.7	2,129.0	2.00	-2.00	490.46
TARGET BHL 2656'FNL, 2665'FWL									
6,440.0	0.00	0.00	6,005.1	-2,104.7	-320.7	2,129.0	0.00	0.00	0.00
6,480.0	0.00	0.00	6,045.1	-2,104.7	-320.7	2,129.0	0.00	0.00	0.00
6,520.0	0.00	0.00	6,085.1	-2,104.7	-320.7	2,129.0	0.00	0.00	0.00
6,560.0	0.00	0.00	6,125.1	-2,104.7	-320.7	2,129.0	0.00	0.00	0.00
6,600.0	0.00	0.00	6,165.1	-2,104.7	-320.7	2,129.0	0.00	0.00	0.00
6,640.0	0.00	0.00	6,205.1	-2,104.7	-320.7	2,129.0	0.00	0.00	0.00
6,680.0	0.00	0.00	6,245.1	-2,104.7	-320.7	2,129.0	0.00	0.00	0.00
6,720.0	0.00	0.00	6,285.1	-2,104.7	-320.7	2,129.0	0.00	0.00	0.00
6,760.0	0.00	0.00	6,325.1	-2,104.7	-320.7	2,129.0	0.00	0.00	0.00
6,800.0	0.00	0.00	6,365.1	-2,104.7	-320.7	2,129.0	0.00	0.00	0.00
6,840.0	0.00	0.00	6,405.1	-2,104.7	-320.7	2,129.0	0.00	0.00	0.00
6,880.0	0.00	0.00	6,445.1	-2,104.7	-320.7	2,129.0	0.00	0.00	0.00
6,920.0	0.00	0.00	6,485.1	-2,104.7	-320.7	2,129.0	0.00	0.00	0.00
6,960.0	0.00	0.00	6,525.1	-2,104.7	-320.7	2,129.0	0.00	0.00	0.00
7,000.0	0.00	0.00	6,565.1	-2,104.7	-320.7	2,129.0	0.00	0.00	0.00
7,040.0	0.00	0.00	6,605.1	-2,104.7	-320.7	2,129.0	0.00	0.00	0.00
7,080.0	0.00	0.00	6,645.1	-2,104.7	-320.7	2,129.0	0.00	0.00	0.00
7,120.0	0.00	0.00	6,685.1	-2,104.7	-320.7	2,129.0	0.00	0.00	0.00
7,160.0	0.00	0.00	6,725.1	-2,104.7	-320.7	2,129.0	0.00	0.00	0.00
7,200.0	0.00	0.00	6,765.1	-2,104.7	-320.7	2,129.0	0.00	0.00	0.00
7,240.0	0.00	0.00	6,805.1	-2,104.7	-320.7	2,129.0	0.00	0.00	0.00
7,280.0	0.00	0.00	6,845.1	-2,104.7	-320.7	2,129.0	0.00	0.00	0.00
7,320.0	0.00	0.00	6,885.1	-2,104.7	-320.7	2,129.0	0.00	0.00	0.00
7,328.9	0.00	0.00	6,894.0	-2,104.7	-320.7	2,129.0	0.00	0.00	0.00
NIOBRARA - TARGET CIRCLE 2656'FNL & 2665'FWL									
7,360.0	0.00	0.00	6,925.1	-2,104.7	-320.7	2,129.0	0.00	0.00	0.00
7,400.0	0.00	0.00	6,965.1	-2,104.7	-320.7	2,129.0	0.00	0.00	0.00
7,440.0	0.00	0.00	7,005.1	-2,104.7	-320.7	2,129.0	0.00	0.00	0.00
7,480.0	0.00	0.00	7,045.1	-2,104.7	-320.7	2,129.0	0.00	0.00	0.00
7,520.0	0.00	0.00	7,085.1	-2,104.7	-320.7	2,129.0	0.00	0.00	0.00
7,560.0	0.00	0.00	7,125.1	-2,104.7	-320.7	2,129.0	0.00	0.00	0.00
7,580.9	0.00	0.00	7,146.0	-2,104.7	-320.7	2,129.0	0.00	0.00	0.00
FORT HAYS									
7,600.0	0.00	0.00	7,165.1	-2,104.7	-320.7	2,129.0	0.00	0.00	0.00
7,624.9	0.00	0.00	7,190.0	-2,104.7	-320.7	2,129.0	0.00	0.00	0.00
CODELL									
7,640.0	0.00	0.00	7,205.1	-2,104.7	-320.7	2,129.0	0.00	0.00	0.00
7,676.9	0.00	0.00	7,242.0	-2,104.7	-320.7	2,129.0	0.00	0.00	0.00

Database:	Landmark	Local Co-ordinate Reference:	Well Booth 25-26
Company:	BAYSWATER EXPLORATION & PRODUCTION	TVD Reference:	WELL @ 4910.0ft (Original Well Elev)
Project:	SEC.26-T7N-R65W	MD Reference:	WELL @ 4910.0ft (Original Well Elev)
Site:	Booth 9 Pad Sec.26-T7N-R65W	North Reference:	True
Well:	Booth 25-26	Survey Calculation Method:	Minimum Curvature
Wellbore:	Wellbore #1		
Design:	Plan #1 (5-21-12)		

Planned Survey

Measured Depth (ft)	Inclination (°)	Azimuth (°)	Vertical Depth (ft)	+N/-S (ft)	+E/-W (ft)	Vertical Section (ft)	Dogleg Rate (°/100ft)	Build Rate (°/100ft)	Turn Rate (°/100ft)
GREENHORN									
7,680.0	0.00	0.00	7,245.1	-2,104.7	-320.7	2,129.0	0.00	0.00	0.00
7,720.0	0.00	0.00	7,285.1	-2,104.7	-320.7	2,129.0	0.00	0.00	0.00
7,758.9	0.00	0.00	7,324.0	-2,104.7	-320.7	2,129.0	0.00	0.00	0.00
GRANEROS									
7,760.0	0.00	0.00	7,325.1	-2,104.7	-320.7	2,129.0	0.00	0.00	0.00
7,774.9	0.00	0.00	7,340.0	-2,104.7	-320.7	2,129.0	0.00	0.00	0.00

Casing Points

Measured Depth (ft)	Vertical Depth (ft)	Name	Casing Diameter (")	Hole Diameter (")
692.4	690.0	8 5/8"	8-5/8	12-1/4

Formations

Measured Depth (ft)	Vertical Depth (ft)	Name	Lithology	Dip (°)	Dip Direction (°)
4,079.1	3,789.0	PARKMAN		0.00	
4,913.8	4,544.0	SUSSEX		0.00	
5,513.1	5,094.0	SHANNON		0.00	
7,328.9	6,894.0	NIOBRARA		0.00	
7,580.9	7,146.0	FORT HAYS		0.00	
7,624.9	7,190.0	CODELL		0.00	
7,676.9	7,242.0	GREENHORN		0.00	
7,758.9	7,324.0	GRANEROS		0.00	



Directional

BAYSWATER EXPLORATION & PRODUCTION

SEC.26-T7N-R65W

Booth 9 Pad Sec.26-T7N-R65W

Booth 25-26

Wellbore #1

Plan #1 (5-21-12)

Anticollision Report

30 May, 2012

Company:	BAYSWATER EXPLORATION & PRODUCTION	Local Co-ordinate Reference:	Well Booth 25-26
Project:	SEC.26-T7N-R65W	TVD Reference:	WELL @ 4910.0ft (Original Well Elev)
Reference Site:	Booth 9 Pad Sec.26-T7N-R65W	MD Reference:	WELL @ 4910.0ft (Original Well Elev)
Site Error:	0.0ft	North Reference:	True
Reference Well:	Booth 25-26	Survey Calculation Method:	Minimum Curvature
Well Error:	0.0ft	Output errors are at	2.00 sigma
Reference Wellbore	Wellbore #1	Database:	Landmark
Reference Design:	Plan #1 (5-21-12)	Offset TVD Reference:	Offset Datum

Reference	Plan #1 (5-21-12)		
Filter type:	NO GLOBAL FILTER: Using user defined selection & filtering criteria		
Interpolation Method:	Stations	Error Model:	ISCWSA
Depth Range:	Unlimited	Scan Method:	Closest Approach 3D
Results Limited by:	Maximum center-center distance of 10,000.0ft	Error Surface:	Elliptical Conic
Warning Levels Evaluated at:	2.00 Sigma		

Survey Tool Program	Date 5/30/2012			
From (ft)	To (ft)	Survey (Wellbore)	Tool Name	Description
0.0	7,774.9	Plan #1 (5-21-12) (Wellbore #1)	MWD	MWD - Standard

Summary						
Site Name	Reference Measured Depth (ft)	Offset Measured Depth (ft)	Distance Between Centres (ft)	Distance Between Ellipses (ft)	Separation Factor	Warning
Offset Well - Wellbore - Design						
Booth 9 Pad Sec.26-T7N-R65W						
Booth 21-26 - Wellbore #1 - Plan #1 (5-21-12)	100.0	100.0	15.6	15.4	69.586	CC, ES
Booth 21-26 - Wellbore #1 - Plan #1 (5-21-12)	1,200.0	1,194.0	34.5	26.7	4.443	SF
Booth 7-26 - Wellbore #1 - Plan #1 (5-21-12)	200.0	200.0	16.1	15.4	23.874	CC, ES
Booth 7-26 - Wellbore #1 - Plan #1 (5-21-12)	1,300.0	1,304.4	92.4	84.2	11.207	SF

Offset Design Booth 9 Pad Sec.26-T7N-R65W - Booth 21-26 - Wellbore #1 - Plan #1 (5-21-12)													Offset Site Error: 0.0ft
Survey Program: 0-MWD													Offset Well Error: 0.0ft
Reference Measured Depth (ft)	Vertical Depth (ft)	Offset Measured Depth (ft)	Vertical Depth (ft)	Semi Major Axis Reference (ft)	Offset (ft)	Highside Toolface (°)	Offset Wellbore Centre +N/-S (ft)	+E/-W (ft)	Distance Between Centres (ft)	Distance Between Ellipses (ft)	Minimum Separation (ft)	Separation Factor	Warning
0.0	0.0	0.0	0.0	0.0	0.0	-140.24	-12.0	-10.0	15.6	15.6	0.00	N/A	
100.0	100.0	100.0	100.0	0.1	0.1	-140.24	-12.0	-10.0	15.6	15.4	0.22	69.586	CC, ES
200.0	200.0	199.4	199.4	0.3	0.3	-140.21	-13.3	-11.1	17.4	16.7	0.66	26.315	
300.0	300.0	298.7	298.5	0.5	0.5	33.57	-17.3	-14.4	21.1	20.0	1.08	19.566	
400.0	399.8	397.9	397.4	0.8	0.8	38.62	-24.0	-19.7	25.4	23.9	1.51	16.842	
500.0	499.5	497.3	496.1	1.0	1.1	41.70	-34.0	-24.9	29.3	27.3	1.96	14.934	
600.0	598.7	596.6	594.4	1.3	1.4	43.11	-47.4	-29.7	32.6	30.1	2.47	13.192	
700.0	697.5	696.1	692.4	1.6	1.8	43.45	-64.1	-34.2	35.2	32.1	3.04	11.579	
800.0	795.6	796.1	790.6	2.0	2.2	45.95	-82.2	-38.6	35.9	32.2	3.69	9.725	
900.0	893.1	896.0	888.7	2.4	2.6	52.70	-100.2	-43.0	34.5	30.0	4.51	7.650	
1,000.0	989.6	995.7	986.7	2.9	3.0	65.32	-118.2	-47.4	32.0	26.4	5.58	5.725	
1,086.8	1,072.7	1,082.0	1,071.5	3.4	3.3	82.48	-133.8	-51.2	30.7	24.0	6.70	4.583	
1,100.0	1,085.3	1,095.0	1,084.3	3.5	3.4	85.56	-136.2	-51.8	30.7	23.9	6.86	4.482	
1,200.0	1,179.8	1,194.0	1,181.6	4.1	3.8	110.25	-154.0	-56.1	34.5	26.7	7.76	4.443	SF
1,300.0	1,273.2	1,292.3	1,278.2	4.8	4.2	130.95	-171.8	-60.4	45.3	37.3	8.01	5.651	
1,400.0	1,365.2	1,390.0	1,374.2	5.6	4.6	144.62	-189.5	-64.7	62.4	54.3	8.10	7.709	
1,461.6	1,421.3	1,449.8	1,433.0	6.1	4.9	150.36	-200.3	-67.3	75.6	67.4	8.20	9.221	
1,500.0	1,456.0	1,486.9	1,469.4	6.4	5.0	153.22	-207.0	-69.0	84.5	76.2	8.30	10.179	
1,600.0	1,546.4	1,583.7	1,564.5	7.2	5.4	158.44	-224.4	-73.2	108.2	99.5	8.65	12.500	
1,700.0	1,636.9	1,680.5	1,659.6	8.0	5.9	161.78	-241.9	-77.5	132.4	123.3	9.10	14.546	
1,800.0	1,727.3	1,777.3	1,754.7	8.8	6.3	164.08	-259.4	-81.7	157.0	147.4	9.61	16.338	
1,900.0	1,817.8	1,874.0	1,849.8	9.7	6.7	165.76	-276.9	-86.0	181.7	171.6	10.14	17.911	

CC - Min centre to center distance or convergent point, SF - min separation factor, ES - min ellipse separation

Company:	BAYSWATER EXPLORATION & PRODUCTION	Local Co-ordinate Reference:	Well Booth 25-26
Project:	SEC.26-T7N-R65W	TVD Reference:	WELL @ 4910.0ft (Original Well Elev)
Reference Site:	Booth 9 Pad Sec.26-T7N-R65W	MD Reference:	WELL @ 4910.0ft (Original Well Elev)
Site Error:	0.0ft	North Reference:	True
Reference Well:	Booth 25-26	Survey Calculation Method:	Minimum Curvature
Well Error:	0.0ft	Output errors are at	2.00 sigma
Reference Wellbore	Wellbore #1	Database:	Landmark
Reference Design:	Plan #1 (5-21-12)	Offset TVD Reference:	Offset Datum

Offset Design Booth 9 Pad Sec.26-T7N-R65W - Booth 21-26 - Wellbore #1 - Plan #1 (5-21-12)												Offset Site Error:	0.0 ft
Survey Program: 0-MWD												Offset Well Error:	0.0 ft
Measured Depth (ft)	Vertical Depth (ft)	Measured Depth (ft)	Vertical Depth (ft)	Reference	Offset	Highside Toolface (°)	Offset Wellbore Centre +N/-S (ft)	+E/-W (ft)	Between Centres (ft)	Between Ellipses (ft)	Minimum Separation (ft)	Separation Factor	Warning
2,000.0	1,908.2	1,970.8	1,944.9	10.5	7.1	167.04	-294.4	-90.2	206.5	195.8	10.70	19.298	
2,100.0	1,998.7	2,067.6	2,040.0	11.3	7.5	168.04	-311.8	-94.5	231.5	220.2	11.28	20.528	
2,200.0	2,089.2	2,164.4	2,135.0	12.1	7.9	168.85	-329.3	-98.7	256.4	244.6	11.86	21.625	
2,300.0	2,179.6	2,261.1	2,230.1	13.0	8.3	169.52	-346.8	-103.0	281.4	269.0	12.45	22.608	
2,400.0	2,270.1	2,357.9	2,325.2	13.8	8.7	170.07	-364.3	-107.2	306.5	293.4	13.04	23.493	
2,500.0	2,360.5	2,454.7	2,420.3	14.7	9.1	170.55	-381.8	-111.5	331.5	317.9	13.65	24.295	
2,600.0	2,451.0	2,551.5	2,515.4	15.5	9.5	170.95	-399.2	-115.7	356.6	342.3	14.25	25.023	
2,700.0	2,541.5	2,648.2	2,610.5	16.3	9.9	171.31	-416.7	-120.0	381.7	366.8	14.86	25.688	
2,800.0	2,631.9	2,745.0	2,705.6	17.2	10.3	171.62	-434.2	-124.2	406.8	391.3	15.47	26.298	
2,900.0	2,722.4	2,841.8	2,800.7	18.0	10.7	171.89	-451.7	-128.5	431.9	415.8	16.08	26.858	
3,000.0	2,812.8	2,938.6	2,895.8	18.8	11.2	172.13	-469.2	-132.7	457.0	440.3	16.70	27.375	
3,100.0	2,903.3	3,035.4	2,990.8	19.7	11.6	172.35	-486.6	-137.0	482.2	464.8	17.31	27.853	
3,200.0	2,993.7	3,132.1	3,085.9	20.5	12.0	172.55	-504.1	-141.3	507.3	489.4	17.93	28.297	
3,300.0	3,084.2	3,228.9	3,181.0	21.4	12.4	172.72	-521.6	-145.5	532.4	513.9	18.55	28.709	
3,400.0	3,174.7	3,325.7	3,276.1	22.2	12.8	172.89	-539.1	-149.8	557.6	538.4	19.16	29.094	
3,500.0	3,265.1	3,422.5	3,371.2	23.0	13.2	173.03	-556.6	-154.0	582.7	562.9	19.78	29.454	
3,600.0	3,355.6	3,519.2	3,466.3	23.9	13.6	173.17	-574.0	-158.3	607.9	587.5	20.41	29.790	
3,700.0	3,446.0	3,616.0	3,561.4	24.7	14.0	173.29	-591.5	-162.5	633.0	612.0	21.03	30.106	
3,800.0	3,536.5	3,712.8	3,656.5	25.5	14.4	173.41	-609.0	-166.8	658.2	636.5	21.65	30.403	
3,900.0	3,626.9	3,809.6	3,751.6	26.4	14.8	173.52	-626.5	-171.0	683.3	661.1	22.27	30.683	
4,000.0	3,717.4	3,906.3	3,846.6	27.2	15.2	173.62	-644.0	-175.3	708.5	685.6	22.89	30.947	
4,100.0	3,807.9	4,003.1	3,941.7	28.1	15.7	173.71	-661.4	-179.5	733.7	710.2	23.52	31.197	
4,200.0	3,898.3	4,099.9	4,036.8	28.9	16.1	173.79	-678.9	-183.8	758.8	734.7	24.14	31.433	
4,300.0	3,988.8	4,196.7	4,131.9	29.7	16.5	173.87	-696.4	-188.0	784.0	759.2	24.77	31.656	
4,400.0	4,079.2	4,293.4	4,227.0	30.6	16.9	173.95	-713.9	-192.3	809.2	783.8	25.39	31.869	
4,500.0	4,169.7	4,390.2	4,322.1	31.4	17.3	174.02	-731.4	-196.5	834.3	808.3	26.02	32.071	
4,600.0	4,260.2	4,487.0	4,417.2	32.3	17.7	174.09	-748.8	-200.8	859.5	832.9	26.64	32.262	
4,700.0	4,350.6	4,573.1	4,501.9	33.1	18.0	174.15	-764.2	-204.5	884.9	857.7	27.23	32.499	
4,800.0	4,441.1	4,646.6	4,574.4	33.9	18.2	174.22	-775.7	-207.3	912.5	884.7	27.76	32.873	
4,900.0	4,531.5	4,719.0	4,646.1	34.8	18.4	174.30	-785.3	-209.6	942.4	914.2	28.27	33.337	
5,000.0	4,622.0	4,800.0	4,726.6	35.6	18.6	174.42	-793.9	-211.7	974.8	946.0	28.79	33.863	
5,100.0	4,712.4	4,860.1	4,786.5	36.5	18.7	174.51	-798.9	-212.9	1,009.3	980.1	29.26	34.495	
5,173.3	4,778.7	4,900.0	4,826.3	37.1	18.8	174.58	-801.5	-213.6	1,036.2	1,006.6	29.60	35.007	
5,200.0	4,803.0	4,928.8	4,855.1	37.3	18.8	174.65	-803.0	-214.0	1,046.0	1,016.3	29.76	35.146	
5,300.0	4,894.5	5,000.0	4,926.2	37.8	18.9	174.85	-805.7	-214.6	1,082.5	1,052.3	30.28	35.754	
5,400.0	4,987.4	5,073.8	5,000.0	38.4	19.0	175.04	-806.6	-214.8	1,118.1	1,087.3	30.76	36.350	
5,500.0	5,081.6	5,155.4	5,081.6	38.8	19.1	175.22	-806.6	-214.8	1,151.6	1,120.4	31.19	36.922	
5,600.0	5,176.8	5,250.7	5,176.8	39.3	19.2	175.40	-806.6	-214.8	1,181.9	1,150.3	31.59	37.415	
5,700.0	5,273.1	5,346.9	5,273.1	39.7	19.3	175.54	-806.6	-214.8	1,208.9	1,176.9	31.95	37.841	
5,800.0	5,370.3	5,444.1	5,370.3	40.1	19.4	175.67	-806.6	-214.8	1,232.5	1,200.2	32.26	38.206	
5,900.0	5,468.2	5,542.0	5,468.2	40.4	19.5	175.77	-806.6	-214.8	1,252.7	1,220.2	32.53	38.512	
6,000.0	5,566.7	5,640.6	5,566.7	40.7	19.6	175.85	-806.6	-214.8	1,269.5	1,236.8	32.75	38.763	
6,100.0	5,665.8	5,739.6	5,665.8	40.9	19.7	175.91	-806.6	-214.8	1,282.9	1,249.9	32.93	38.962	
6,200.0	5,765.3	5,839.1	5,765.3	41.1	19.8	175.96	-806.6	-214.8	1,292.8	1,259.7	33.05	39.111	
6,300.0	5,865.1	5,938.9	5,865.1	41.2	19.9	175.99	-806.6	-214.8	1,299.2	1,266.1	33.14	39.209	
6,400.0	5,965.1	6,038.9	5,965.1	41.3	20.0	176.00	-806.6	-214.8	1,302.2	1,269.0	33.17	39.259	
6,434.9	6,000.0	6,073.8	6,000.0	41.4	20.1	4.66	-806.6	-214.8	1,302.4	1,269.2	33.17	39.261	
6,500.0	6,065.1	6,138.9	6,065.1	41.4	20.1	4.66	-806.6	-214.8	1,302.4	1,269.0	33.37	39.032	
6,600.0	6,165.1	6,238.9	6,165.1	41.4	20.3	4.66	-806.6	-214.8	1,302.4	1,268.7	33.66	38.693	
6,700.0	6,265.1	6,338.9	6,265.1	41.5	20.4	4.66	-806.6	-214.8	1,302.4	1,268.4	33.96	38.356	
6,800.0	6,365.1	6,438.9	6,365.1	41.6	20.5	4.66	-806.6	-214.8	1,302.4	1,268.1	34.25	38.021	

CC - Min centre to center distance or convergent point, SF - min separation factor, ES - min ellipse separation

Company:	BAYSWATER EXPLORATION & PRODUCTION	Local Co-ordinate Reference:	Well Booth 25-26
Project:	SEC.26-T7N-R65W	TVD Reference:	WELL @ 4910.0ft (Original Well Elev)
Reference Site:	Booth 9 Pad Sec.26-T7N-R65W	MD Reference:	WELL @ 4910.0ft (Original Well Elev)
Site Error:	0.0ft	North Reference:	True
Reference Well:	Booth 25-26	Survey Calculation Method:	Minimum Curvature
Well Error:	0.0ft	Output errors are at	2.00 sigma
Reference Wellbore	Wellbore #1	Database:	Landmark
Reference Design:	Plan #1 (5-21-12)	Offset TVD Reference:	Offset Datum

Offset Design Booth 9 Pad Sec.26-T7N-R65W - Booth 21-26 - Wellbore #1 - Plan #1 (5-21-12)												Offset Site Error:	0.0 ft
Survey Program: 0-MWD												Offset Well Error:	0.0 ft
Measured Depth (ft)	Vertical Depth (ft)	Measured Depth (ft)	Vertical Depth (ft)	Semi Major Axis		Highside Toolface (°)	Offset Wellbore Centre		Distance		Minimum Separation (ft)	Separation Factor	Warning
Reference	Offset	Reference	Offset	Reference	Offset		+N/-S (ft)	+E/-W (ft)	Between Centres (ft)	Between Ellipses (ft)			
6,900.0	6,465.1	6,538.9	6,465.1	41.6	20.6	4.66	-806.6	-214.8	1,302.4	1,267.8	34.56	37.689	
7,000.0	6,565.1	6,638.9	6,565.1	41.7	20.7	4.66	-806.6	-214.8	1,302.4	1,267.5	34.86	37.360	
7,100.0	6,665.1	6,738.9	6,665.1	41.7	20.9	4.66	-806.6	-214.8	1,302.4	1,267.2	35.17	37.033	
7,200.0	6,765.1	6,838.9	6,765.1	41.8	21.0	4.66	-806.6	-214.8	1,302.4	1,266.9	35.48	36.708	
7,300.0	6,865.1	6,938.9	6,865.1	41.9	21.1	4.66	-806.6	-214.8	1,302.4	1,266.6	35.79	36.387	
7,400.0	6,965.1	7,038.9	6,965.1	41.9	21.3	4.66	-806.6	-214.8	1,302.4	1,266.3	36.11	36.068	
7,500.0	7,065.1	7,138.9	7,065.1	42.0	21.4	4.66	-806.6	-214.8	1,302.4	1,266.0	36.43	35.752	
7,600.0	7,165.1	7,238.9	7,165.1	42.0	21.5	4.66	-806.6	-214.8	1,302.4	1,265.6	36.75	35.439	
7,700.0	7,265.1	7,338.9	7,265.1	42.1	21.7	4.66	-806.6	-214.8	1,302.4	1,265.3	37.07	35.129	
7,774.9	7,340.0	7,413.8	7,340.0	42.2	21.8	4.66	-806.6	-214.8	1,302.4	1,265.1	37.32	34.899	

Company:	BAYSWATER EXPLORATION & PRODUCTION	Local Co-ordinate Reference:	Well Booth 25-26
Project:	SEC.26-T7N-R65W	TVD Reference:	WELL @ 4910.0ft (Original Well Elev)
Reference Site:	Booth 9 Pad Sec.26-T7N-R65W	MD Reference:	WELL @ 4910.0ft (Original Well Elev)
Site Error:	0.0ft	North Reference:	True
Reference Well:	Booth 25-26	Survey Calculation Method:	Minimum Curvature
Well Error:	0.0ft	Output errors are at	2.00 sigma
Reference Wellbore	Wellbore #1	Database:	Landmark
Reference Design:	Plan #1 (5-21-12)	Offset TVD Reference:	Offset Datum

Offset Design Booth 9 Pad Sec.26-T7N-R65W - Booth 7-26 - Wellbore #1 - Plan #1 (5-21-12)													Offset Site Error:	0.0 ft
Survey Program: 0-MWD													Offset Well Error:	0.0 ft
Measured Depth (ft)	Vertical Depth (ft)	Measured Depth (ft)	Vertical Depth (ft)	Reference	Offset	Semi Major Axis	Highside Toolface (°)	Offset Wellbore Centre +N/-S (ft)	Offset Wellbore Centre +E/-W (ft)	Between Centres (ft)	Between Ellipses (ft)	Minimum Separation (ft)	Separation Factor	Warning
0.0	0.0	0.0	0.0	0.0	0.0	39.70		12.4	10.3	16.1	16.1	0.00	N/A	
100.0	100.0	100.0	100.0	0.1	0.1	39.70		12.4	10.3	16.1	15.9	0.22	71.623	
200.0	200.0	200.0	200.0	0.3	0.3	39.70		12.4	10.3	16.1	15.4	0.67	23.874 CC, ES	
300.0	300.0	300.0	300.0	0.5	0.6	-151.88		12.4	10.3	17.6	16.5	1.11	15.927	
400.0	399.8	400.4	400.4	0.8	0.8	-154.99		10.7	10.6	21.1	19.6	1.51	13.961	
500.0	499.5	500.9	500.7	1.0	1.0	-154.79		5.5	11.7	25.3	23.4	1.93	13.150	
600.0	598.7	601.4	600.8	1.3	1.2	-152.68		-3.1	13.6	30.3	27.9	2.39	12.706	
700.0	697.5	702.0	700.6	1.6	1.5	-149.57		-15.2	16.1	36.1	33.2	2.90	12.440	
800.0	795.6	802.6	800.0	2.0	1.8	-146.06		-30.6	19.4	42.8	39.3	3.50	12.235	
900.0	893.1	903.1	898.7	2.4	2.2	-142.48		-49.5	23.5	50.5	46.3	4.19	12.034	
1,000.0	989.6	1,003.7	996.6	2.9	2.6	-139.03		-71.7	28.2	59.2	54.2	5.01	11.819	
1,100.0	1,085.3	1,104.2	1,093.6	3.5	3.1	-135.82		-97.3	33.6	69.1	63.1	5.96	11.596	
1,200.0	1,179.8	1,204.6	1,189.6	4.1	3.7	-132.88		-126.1	39.8	80.1	73.1	7.04	11.377	
1,300.0	1,273.2	1,304.4	1,284.0	4.8	4.3	-130.41		-157.8	46.5	92.4	84.2	8.24	11.207 SF	
1,400.0	1,365.2	1,403.3	1,377.5	5.6	4.9	-129.63		-189.7	53.3	106.8	97.3	9.46	11.291	
1,461.6	1,421.3	1,464.2	1,434.9	6.1	5.3	-129.87		-209.3	57.5	116.8	106.6	10.19	11.454	
1,500.0	1,456.0	1,502.0	1,470.6	6.4	5.6	-130.23		-221.4	60.1	123.2	112.6	10.65	11.569	
1,600.0	1,546.4	1,600.5	1,563.6	7.2	6.2	-131.02		-253.2	66.8	140.1	128.3	11.85	11.823	
1,700.0	1,636.9	1,699.1	1,656.7	8.0	6.9	-131.64		-285.0	73.6	157.0	144.0	13.06	12.025	
1,800.0	1,727.3	1,797.6	1,749.7	8.8	7.5	-132.14		-316.7	80.3	173.9	159.7	14.27	12.190	
1,900.0	1,817.8	1,896.2	1,842.8	9.7	8.2	-132.54		-348.5	87.1	190.9	175.4	15.49	12.326	
2,000.0	1,908.2	1,994.7	1,935.8	10.5	8.8	-132.89		-380.2	93.9	207.8	191.1	16.71	12.440	
2,100.0	1,998.7	2,093.2	2,028.9	11.3	9.5	-133.18		-412.0	100.6	224.8	206.8	17.93	12.538	
2,200.0	2,089.2	2,191.8	2,121.9	12.1	10.1	-133.43		-443.7	107.4	241.7	222.6	19.15	12.622	
2,300.0	2,179.6	2,290.3	2,214.9	13.0	10.8	-133.65		-475.5	114.1	258.7	238.3	20.38	12.695	
2,400.0	2,270.1	2,388.9	2,308.0	13.8	11.5	-133.84		-507.3	120.9	275.6	254.0	21.60	12.759	
2,500.0	2,360.5	2,487.4	2,401.0	14.7	12.1	-134.01		-539.0	127.7	292.6	269.8	22.83	12.816	
2,600.0	2,451.0	2,586.0	2,494.1	15.5	12.8	-134.16		-570.8	134.4	309.6	285.5	24.06	12.867	
2,700.0	2,541.5	2,684.5	2,587.1	16.3	13.4	-134.29		-602.5	141.2	326.5	301.2	25.29	12.912	
2,800.0	2,631.9	2,783.1	2,680.2	17.2	14.1	-134.41		-634.3	147.9	343.5	317.0	26.52	12.953	
2,900.0	2,722.4	2,881.6	2,773.2	18.0	14.8	-134.52		-666.0	154.7	360.4	332.7	27.75	12.990	
3,000.0	2,812.8	2,980.2	2,866.3	18.8	15.4	-134.62		-697.8	161.5	377.4	348.4	28.98	13.023	
3,100.0	2,903.3	3,078.7	2,959.3	19.7	16.1	-134.71		-729.6	168.2	394.4	364.2	30.21	13.054	
3,200.0	2,993.7	3,177.3	3,052.4	20.5	16.7	-134.80		-761.3	175.0	411.4	379.9	31.44	13.082	
3,300.0	3,084.2	3,275.8	3,145.4	21.4	17.4	-134.87		-793.1	181.7	428.3	395.7	32.68	13.108	
3,400.0	3,174.7	3,374.4	3,238.4	22.2	18.1	-134.94		-824.8	188.5	445.3	411.4	33.91	13.132	
3,500.0	3,265.1	3,472.9	3,331.5	23.0	18.7	-135.01		-856.6	195.3	462.3	427.1	35.14	13.154	
3,600.0	3,355.6	3,571.5	3,424.5	23.9	19.4	-135.07		-888.4	202.0	479.2	442.9	36.38	13.175	
3,700.0	3,446.0	3,670.0	3,517.6	24.7	20.1	-135.13		-920.1	208.8	496.2	458.6	37.61	13.194	
3,800.0	3,536.5	3,768.6	3,610.6	25.5	20.7	-135.18		-951.9	215.5	513.2	474.3	38.84	13.211	
3,900.0	3,626.9	3,867.1	3,703.7	26.4	21.4	-135.23		-983.6	222.3	530.2	490.1	40.08	13.228	
4,000.0	3,717.4	3,965.7	3,796.7	27.2	22.1	-135.28		-1,015.4	229.1	547.1	505.8	41.31	13.244	
4,100.0	3,807.9	4,064.2	3,889.8	28.1	22.7	-135.32		-1,047.1	235.8	564.1	521.6	42.55	13.258	
4,200.0	3,898.3	4,162.8	3,982.8	28.9	23.4	-135.36		-1,078.9	242.6	581.1	537.3	43.78	13.272	
4,300.0	3,988.8	4,261.3	4,075.9	29.7	24.1	-135.40		-1,110.7	249.3	598.1	553.0	45.02	13.285	
4,400.0	4,079.2	4,359.8	4,168.9	30.6	24.7	-135.44		-1,142.4	256.1	615.0	568.8	46.25	13.298	
4,500.0	4,169.7	4,458.4	4,261.9	31.4	25.4	-135.48		-1,174.2	262.9	632.0	584.5	47.49	13.309	
4,600.0	4,260.2	4,556.9	4,355.0	32.3	26.1	-135.51		-1,205.9	269.6	649.0	600.3	48.72	13.320	
4,700.0	4,350.6	4,655.5	4,448.0	33.1	26.7	-135.54		-1,237.7	276.4	666.0	616.0	49.96	13.331	
4,800.0	4,441.1	4,754.0	4,541.1	33.9	27.4	-135.57		-1,269.4	283.1	682.9	631.8	51.19	13.341	
4,900.0	4,531.5	4,852.6	4,634.1	34.8	28.0	-135.60		-1,301.2	289.9	699.9	647.5	52.43	13.350	

CC - Min centre to center distance or convergent point, SF - min separation factor, ES - min ellipse separation

Company:	BAYSWATER EXPLORATION & PRODUCTION	Local Co-ordinate Reference:	Well Booth 25-26
Project:	SEC.26-T7N-R65W	TVD Reference:	WELL @ 4910.0ft (Original Well Elev)
Reference Site:	Booth 9 Pad Sec.26-T7N-R65W	MD Reference:	WELL @ 4910.0ft (Original Well Elev)
Site Error:	0.0ft	North Reference:	True
Reference Well:	Booth 25-26	Survey Calculation Method:	Minimum Curvature
Well Error:	0.0ft	Output errors are at	2.00 sigma
Reference Wellbore	Wellbore #1	Database:	Landmark
Reference Design:	Plan #1 (5-21-12)	Offset TVD Reference:	Offset Datum

Offset Design Booth 9 Pad Sec.26-T7N-R65W - Booth 7-26 - Wellbore #1 - Plan #1 (5-21-12)												Offset Site Error: 0.0 ft	
Survey Program: 0-MWD												Offset Well Error: 0.0 ft	
Reference		Offset		Semi Major Axis			Distance						Warning
Measured Depth	Vertical Depth	Measured Depth	Vertical Depth	Reference	Offset	Highside Toolface	Offset Wellbore Centre +N/-S	Offset Wellbore Centre +E/-W	Between Centres	Between Ellipses	Minimum Separation	Separation Factor	
(ft)	(ft)	(ft)	(ft)	(ft)	(ft)	(°)	(ft)	(ft)	(ft)	(ft)	(ft)		
5,000.0	4,622.0	4,951.1	4,727.2	35.6	28.7	-135.63	-1,333.0	296.7	716.9	663.2	53.66	13.359	
5,100.0	4,712.4	5,049.7	4,820.2	36.5	29.4	-135.65	-1,364.7	303.4	733.9	679.0	54.90	13.368	
5,173.3	4,778.7	5,118.3	4,885.1	37.1	29.8	-135.68	-1,386.7	308.1	746.4	690.7	55.73	13.393	
5,200.0	4,803.0	5,141.9	4,907.5	37.3	29.9	-135.77	-1,394.0	309.6	751.0	695.1	55.97	13.419	
5,300.0	4,894.5	5,230.1	4,991.6	37.8	30.3	-136.10	-1,419.6	315.1	767.6	710.9	56.72	13.533	
5,400.0	4,987.4	5,318.1	5,076.5	38.4	30.6	-136.43	-1,442.6	320.0	783.1	725.7	57.41	13.641	
5,500.0	5,081.6	5,406.1	5,161.9	38.8	31.0	-136.76	-1,463.0	324.4	797.4	739.4	58.02	13.745	
5,600.0	5,176.8	5,494.0	5,247.9	39.3	31.3	-137.09	-1,480.9	328.2	810.7	752.1	58.55	13.846	
5,700.0	5,273.1	5,581.8	5,334.3	39.7	31.5	-137.42	-1,496.2	331.4	822.7	763.7	59.00	13.945	
5,800.0	5,370.3	5,669.5	5,421.1	40.1	31.7	-137.74	-1,508.8	334.1	833.6	774.3	59.36	14.043	
5,900.0	5,468.2	5,757.1	5,508.1	40.4	31.9	-138.07	-1,518.8	336.2	843.4	783.8	59.64	14.141	
6,000.0	5,566.7	5,844.6	5,595.2	40.7	32.1	-138.40	-1,526.3	337.8	852.0	792.2	59.84	14.239	
6,100.0	5,665.8	5,932.0	5,682.5	40.9	32.2	-138.73	-1,531.1	338.8	859.4	799.5	59.94	14.338	
6,200.0	5,765.3	6,019.3	5,769.7	41.1	32.3	-139.06	-1,533.3	339.3	865.7	805.7	59.96	14.437	
6,300.0	5,865.1	6,114.7	5,865.1	41.2	32.4	-139.37	-1,533.4	339.3	870.5	810.6	59.92	14.527	
6,400.0	5,965.1	6,214.6	5,965.1	41.3	32.4	-139.53	-1,533.4	339.3	872.8	812.9	59.91	14.567	
6,434.9	6,000.0	6,249.6	6,000.0	41.4	32.5	49.12	-1,533.4	339.3	872.9	813.0	59.93	14.567	
6,500.0	6,065.1	6,314.6	6,065.1	41.4	32.5	49.12	-1,533.4	339.3	872.9	812.9	60.03	14.541	
6,600.0	6,165.1	6,414.6	6,165.1	41.4	32.6	49.12	-1,533.4	339.3	872.9	812.7	60.18	14.504	
6,700.0	6,265.1	6,514.6	6,265.1	41.5	32.6	49.12	-1,533.4	339.3	872.9	812.6	60.34	14.467	
6,800.0	6,365.1	6,614.6	6,365.1	41.6	32.7	49.12	-1,533.4	339.3	872.9	812.4	60.50	14.429	
6,900.0	6,465.1	6,714.6	6,465.1	41.6	32.8	49.12	-1,533.4	339.3	872.9	812.3	60.66	14.390	
7,000.0	6,565.1	6,814.6	6,565.1	41.7	32.9	49.12	-1,533.4	339.3	872.9	812.1	60.83	14.351	
7,100.0	6,665.1	6,914.6	6,665.1	41.7	32.9	49.12	-1,533.4	339.3	872.9	811.9	60.99	14.312	
7,200.0	6,765.1	7,014.6	6,765.1	41.8	33.0	49.12	-1,533.4	339.3	872.9	811.8	61.16	14.272	
7,300.0	6,865.1	7,114.6	6,865.1	41.9	33.1	49.12	-1,533.4	339.3	872.9	811.6	61.34	14.232	
7,400.0	6,965.1	7,214.6	6,965.1	41.9	33.2	49.12	-1,533.4	339.3	872.9	811.4	61.51	14.191	
7,500.0	7,065.1	7,314.6	7,065.1	42.0	33.3	49.12	-1,533.4	339.3	872.9	811.2	61.69	14.150	
7,600.0	7,165.1	7,414.6	7,165.1	42.0	33.4	49.12	-1,533.4	339.3	872.9	811.1	61.87	14.108	
7,700.0	7,265.1	7,514.6	7,265.1	42.1	33.4	49.12	-1,533.4	339.3	872.9	810.9	62.06	14.066	
7,748.2	7,313.2	7,562.8	7,313.2	42.1	33.5	49.12	-1,533.4	339.3	872.9	810.8	62.15	14.046	
7,774.9	7,340.0	7,584.6	7,335.0	42.2	33.5	49.12	-1,533.4	339.3	872.9	810.7	62.19	14.036	

Company:	BAYSWATER EXPLORATION & PRODUCTION	Local Co-ordinate Reference:	Well Booth 25-26
Project:	SEC.26-T7N-R65W	TVD Reference:	WELL @ 4910.0ft (Original Well Elev)
Reference Site:	Booth 9 Pad Sec.26-T7N-R65W	MD Reference:	WELL @ 4910.0ft (Original Well Elev)
Site Error:	0.0ft	North Reference:	True
Reference Well:	Booth 25-26	Survey Calculation Method:	Minimum Curvature
Well Error:	0.0ft	Output errors are at	2.00 sigma
Reference Wellbore	Wellbore #1	Database:	Landmark
Reference Design:	Plan #1 (5-21-12)	Offset TVD Reference:	Offset Datum

Reference Depths are relative to WELL @ 4910.0ft (Original Well Elev) Coordinates are relative to: Booth 25-26
Offset Depths are relative to Offset Datum Coordinate System is US State Plane 1983, Colorado Northern Zone
Central Meridian is -105.500000 ° Grid Convergence at Surface is: 0.56°



Company:	BAYSWATER EXPLORATION & PRODUCTION	Local Co-ordinate Reference:	Well Booth 25-26
Project:	SEC.26-T7N-R65W	TVD Reference:	WELL @ 4910.0ft (Original Well Elev)
Reference Site:	Booth 9 Pad Sec.26-T7N-R65W	MD Reference:	WELL @ 4910.0ft (Original Well Elev)
Site Error:	0.0ft	North Reference:	True
Reference Well:	Booth 25-26	Survey Calculation Method:	Minimum Curvature
Well Error:	0.0ft	Output errors are at	2.00 sigma
Reference Wellbore	Wellbore #1	Database:	Landmark
Reference Design:	Plan #1 (5-21-12)	Offset TVD Reference:	Offset Datum

Reference Depths are relative to WELL @ 4910.0ft (Original Well Elev) Coordinates are relative to: Booth 25-26
 Offset Depths are relative to Offset Datum Coordinate System is US State Plane 1983, Colorado Northern Zone
 Central Meridian is -105.500000 ° Grid Convergence at Surface is: 0.56°

